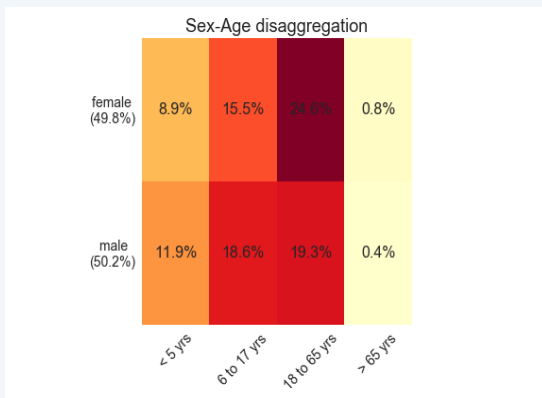


OVERVIEW

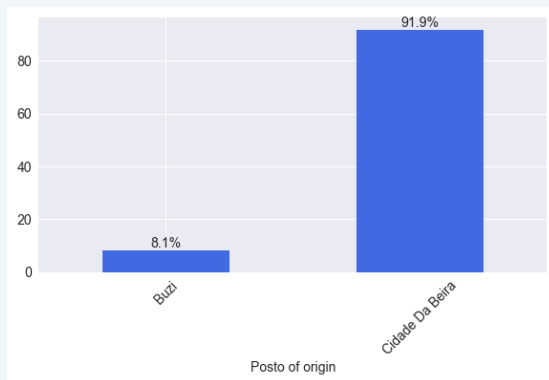
From 14 to 15 April 2019, IOM’s Displacement Tracking Matrix (DTM) teams conducted a rapid intention survey in 18 displacement sites located in Beira district, in coordination with the Mozambique’s National Institute for Disaster Management (INGC). A total of 543 head of households were interviewed during this exercise. The information provided in this report is based on population estimates calculated from this sample.*

INTERNALLY DISPLACED PERSONS (IDP) PROFILE

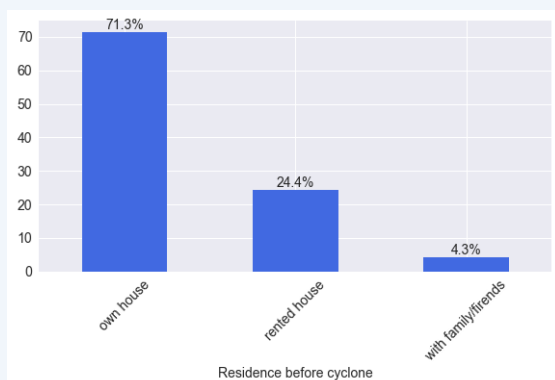
The assessed population is composed of 49,8% woman and 50,2% men.



The majority of the households assessed (91,9%) are from the city of Beira followed by Buzi district (8,1%).

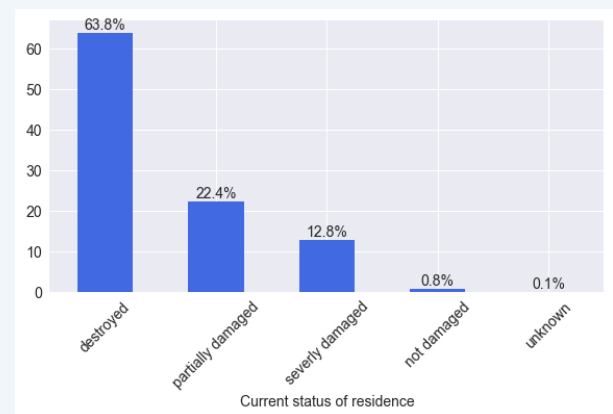


Most of the IDP households were living in their own house before being displaced (71,3%), some were living in rented houses (24,4%), while a few were residing with family and friends (4,3%).

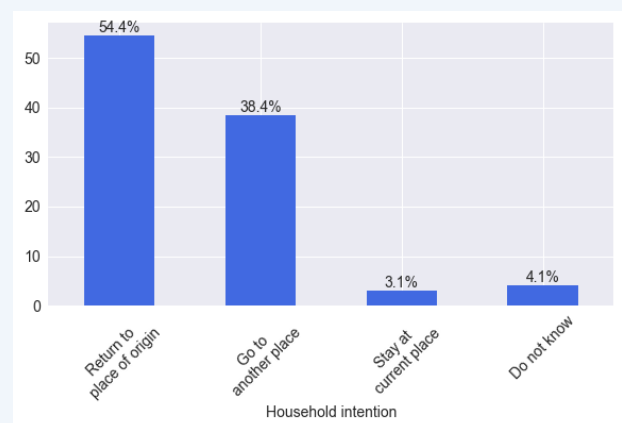


STATUS OF THE HOUSE AND INTENTION

The majority of the households have their houses destroyed (63,8%), while 12,8% of them have houses that are severely damaged. 22,4% of the IDP households have partially damaged houses.



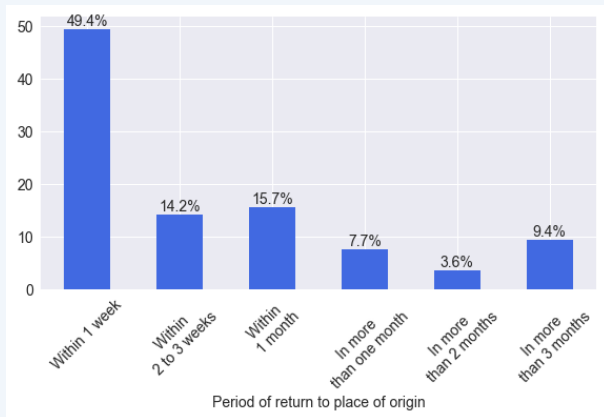
Regarding their intention of return, 54,4% of the households want to go back to their place of origin while 38,4% intend to go to a different place than their place of origin. 3,1% of the household want to stay in the displacement sites.



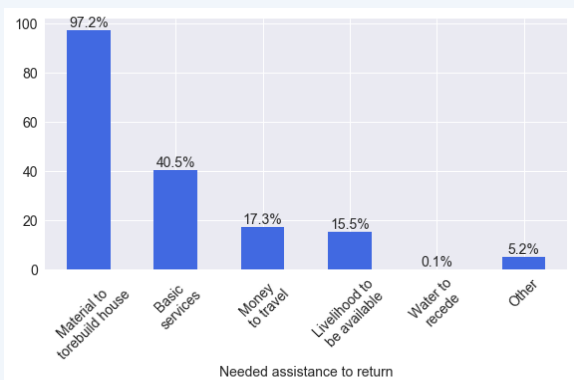
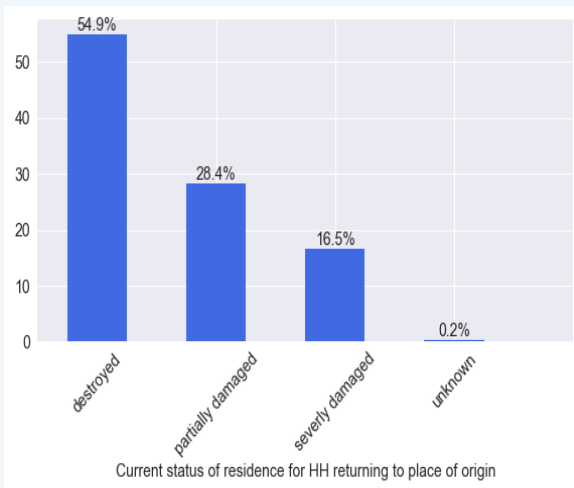
The sample for this study was calculated based on the total number of households identified in the sites that were assessed with a 95% confidence level and 10 % margin of error. For more information on the methodology, please consult [here](#)

IDP HOUSEHOLDS WHO INTEND TO RETURN TO THEIR PLACE OF ORIGIN

Among the households who want to go back to their places of origin, 49,4% intend to return within a week, while 14,2% intend to return within 2 or 3 weeks. 15,7% of the households said that they intend to go back to their place of origin within one month.

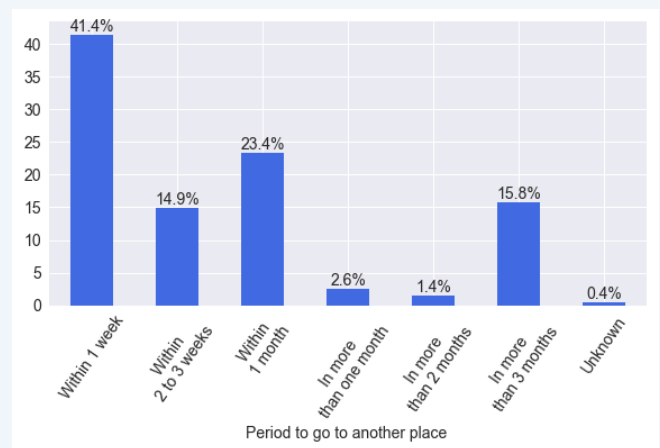


The majority of the households who intend to return to their place of origin declared that their houses were destroyed (54,9%) while 28,4% of the households said that their houses were partially damaged.

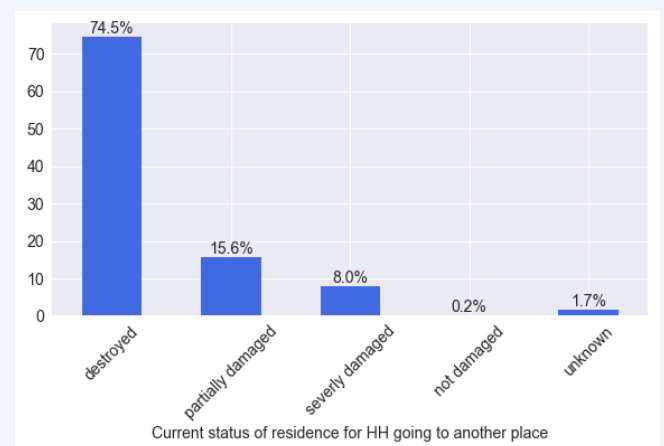


IDP HOUSEHOLDS WHO WANT TO RETURN TO ANOTHER PLACE THAN THEIR PLACES OF ORIGIN

When asked about their date of return, 41,4% of the IDP household who said that they will go to a different place than their place of origin declared that they will leave within a week. 23,4% said they will leave within a month while 14,9% declared that they will leave before two to three weeks.



The majority of households who want to go to another place than their place of origin said that their houses were destroyed (74,5%) while 15,6% said that they were partially damaged.



For more information, please visit :
<http://displacement.iom.int/mozambique>

ANALYSIS PER SITE

In Antiga Emissora Radio, China HD, EPC Muavi 1, EPC Muavi 2, EPC Vaz, ES Azem, Picoco and Sao Pedro Claver sites, more than 70% of the IDP households were living in their own house. In China HD and EPC Muavi 1, more than 90% of the IDP households were owner of their houses. In E Ind 25 de Junho and EOC Amilcar Cabral, more than 70% of the IDP household were living in rented houses.

Site	own house	rented house	with family/friends
Antiga Emissora Radio	85.3%	8.8%	5.9%
China HD	90.0%	10.0%	
E 24 de Julho	64.7%	23.5%	11.8%
E Ind 25 de Junho		90.9%	9.1%
EOC Amilcar Cabral	15.4%	76.9%	7.7%
EPC 25 de junho	65.5%	31.0%	3.4%
EPC Muavi 1	91.5%	8.5%	
EPC Muavi 2	73.3%	13.3%	13.3%
EPC Palmeira	47.6%	42.9%	9.5%
EPC Vaz	72.2%	11.1%	16.7%
ES Azem	75.0%	25.0%	
ES Samora Machel	64.3%	33.3%	2.4%
IFAPA 1	66.2%	26.2%	7.7%
IFP Inhamizua	29.4%	52.9%	17.6%
Igreja Adventista	42.9%	57.1%	
Picoco	77.9%	20.9%	1.2%
Sao Pedro Claver	82.9%	17.1%	
Terra Prometida	65.4%	30.8%	3.8%

In Antiga Emissora Radio, E Ind 25 de Junho, EPC Muavi 2, ES Samora Machel, IFAPA, IFP Inhamizua, Igreja adventista, Sao Pedro Claver and Terra Prometida sites, more than 70% of the IDP households have their houses destroyed. In Antiga Emissora Radio, E Ind 25 de Junho, EPC Muavi 2, IFAPA, IFP Inhamizua and Terra Prometida sites, more than 80% of the IDPs have their houses destroyed.

Site	destroyed	partially damaged	severely damaged	no damaged	unknown
Antiga Emissora Radio	82.4%	14.7%	2.9%		
China HD		100.0%			
E 24 de Julho	23.5%	35.3%	41.2%		
E Ind 25 de Junho	61.8%		18.2%		
EPF Amilcar Cabral	69.2%	7.7%	23.1%		
EPC 25 de junho	44.8%	24.1%	27.6%		3.4%
EPC Muavi 1	54.2%	32.2%	13.6%		
EPC Muavi 2	93.3%	6.7%			
EPC Palmeira	38.1%	19.0%	33.3%		9.5%
EPC Vaz	27.8%	55.6%	16.7%		
ES Azem	50.0%		50.0%		
ES Samora Machel	73.8%	9.5%	16.7%		
IFAPA 1	80.0%	9.2%	7.7%		3.1%
IFP Inhamizua	82.4%	17.6%			
Igreja Adventista	71.4%		28.6%		
Picoco	59.3%	27.9%	12.8%		
Sao Pedro Claver	74.3%	2.9%	20.0%		2.9%
Terra Prometida	96.2%	3.8%			

In China ID and Es Azem sites, more than 90% of the population want to return to their place of origin. In Antiga Emissora Radio, E 24 de Julho, EPC 25 de Junho, EPC Muavi 1, EPC Palmeira, EPC Vaz, ES Azem, IFP Inhamizua and Sao Pedro Claver sites more than 70% of the IDP households want to return to their place of origin. In E Ind 25 de Junho, ES Samora Machel and IFAPA 1, more than 80% of the households want to go to another place.

Site	Return to place of origin	Go to another place	Stay at current place	Do not know
Antiga Emissora Radio	76.5%	23.5%		
China HD	94.8%			5.2%
E 24 de Julho	76.5%	14.7%		8.8%
E Ind 25 de Junho	18.2%	81.8%		
EPF Amilcar Cabral	30.8%	69.2%		
EPC 25 de junho	73.3%	13.8%	6.9%	
EPC Muavi 1	93.2%	5.1%	1.7%	
EPC Muavi 2	26.7%	73.3%		
EPC Palmeira	95.2%	4.8%		
EPC Vaz	72.2%	27.8%		
ES Azem	87.5%			12.5%
ES Samora Machel		90.5%	2.4%	7.1%
IFAPA 1	10.8%	80.0%	4.6%	4.6%
IFP Inhamizua	82.4%		11.8%	5.9%
Igreja Adventista	64.3%			35.7%
Picoco	65.1%	32.6%		2.3%
Sao Pedro Claver	82.9%	11.4%	5.7%	
Terra Prometida			57.7%	42.3%

In EPC Palmeira, EPC Vaz, ES Azem, IFAPA 1, more than 90% of the IDP households want to return to their place of origin within a week. In E 24 de Julho, EPC 25 de Junho and EPC Muavi 2, more than 70% of the IDP household

Site	Within 1 week	Between 2 and 3 weeks	Within 1 month	More than 1 month	More than 2 month	More than 3 month
Antiga Emissora Radio	15.4%	53.8%	23.1%		3.8%	3.8%
China HD		15.0%		85.0%		
E 24 de Julho	73.1%		15.4%	3.8%	7.7%	
E Ind 25 de Junho				50.0%	50.0%	
EPF Amilcar Cabral	50.0%	50.0%				
EPC 25 de junho	76.3%	13.0%	4.3%	4.3%		
EPC Muavi 1	54.5%		10.9%	5.5%	3.6%	25.5%
EPC Muavi 2	75.0%	25.0%				
EPC Palmeira	95.0%					4.4%
EPC Vaz	95.5%					4.5%
ES Azem	87.5%					12.5%
IFAPA 1	94.4%					5.6%
IFP Inhamizua			14.3%	28.6%	14.3%	42.9%
Igreja Adventista		11.1%			44.4%	44.4%
Picoco	51.8%	21.4%	21.4%	1.8%	1.8%	1.8%
Sao Pedro Claver	27.6%	6.9%	20.7%	17.2%		27.6%

For more information, please visit : <http://displacement.iom.int/mozambique>

