

OVERVIEW OF DISPLACEMENT

RRA Round 6 - Gedeo and West Guji Zones



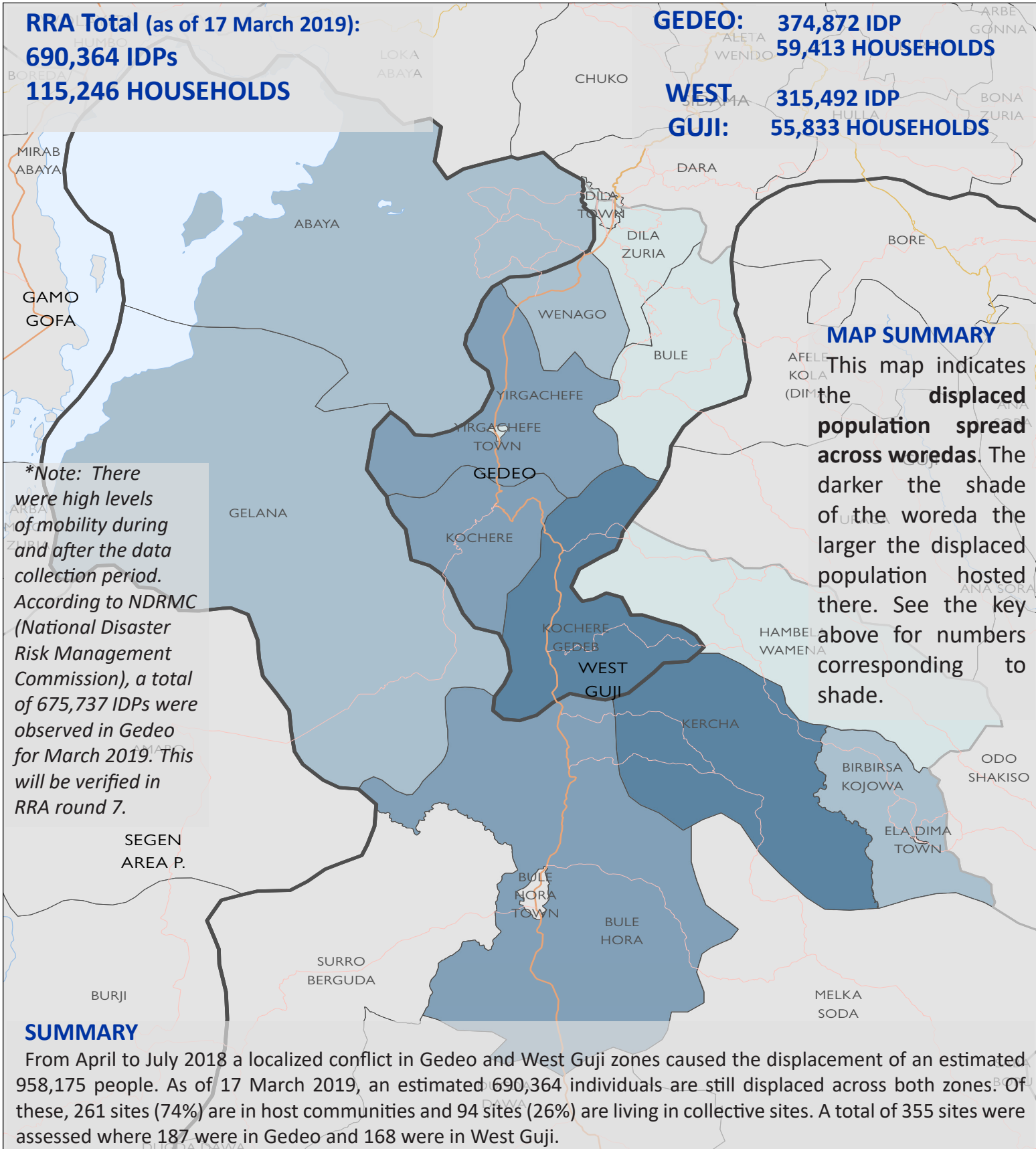
Map Production Date : 29 Mar 2019
displacement.iom.int/ethiopia | dtmethiopia@iom.int

Source Data : ESRI, IOM, UNJLC

Disclaimer : This map is for illustration purposes only. Names and boundaries on this map do not imply official endorsement or acceptance by IOM.

RRA Total (as of 17 March 2019):
690,364 IDPs
115,246 HOUSEHOLDS

GEDEO: 374,872 IDP
59,413 HOUSEHOLDS
WEST GUJI: 315,492 IDP
55,833 HOUSEHOLDS



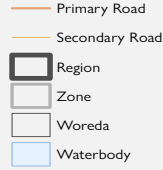
MAP SUMMARY

This map indicates the displaced population spread across woredas. The darker the shade of the woreda the larger the displaced population hosted there. See the key above for numbers corresponding to shade.

**Note: There were high levels of mobility during and after the data collection period. According to NDRMC (National Disaster Risk Management Commission), a total of 675,737 IDPs were observed in Gedeo for March 2019. This will be verified in RRA round 7.*

SUMMARY

From April to July 2018 a localized conflict in Gedeo and West Guji zones caused the displacement of an estimated 958,175 people. As of 17 March 2019, an estimated 690,364 individuals are still displaced across both zones. Of these, 261 sites (74%) are in host communities and 94 sites (26%) are living in collective sites. A total of 355 sites were assessed where 187 were in Gedeo and 168 were in West Guji.



OVERVIEW OF DISPLACEMENT NEEDS RRA Round 6 - Gedeeo and West Guji Zones

1:550,000 1 cm = 6 km

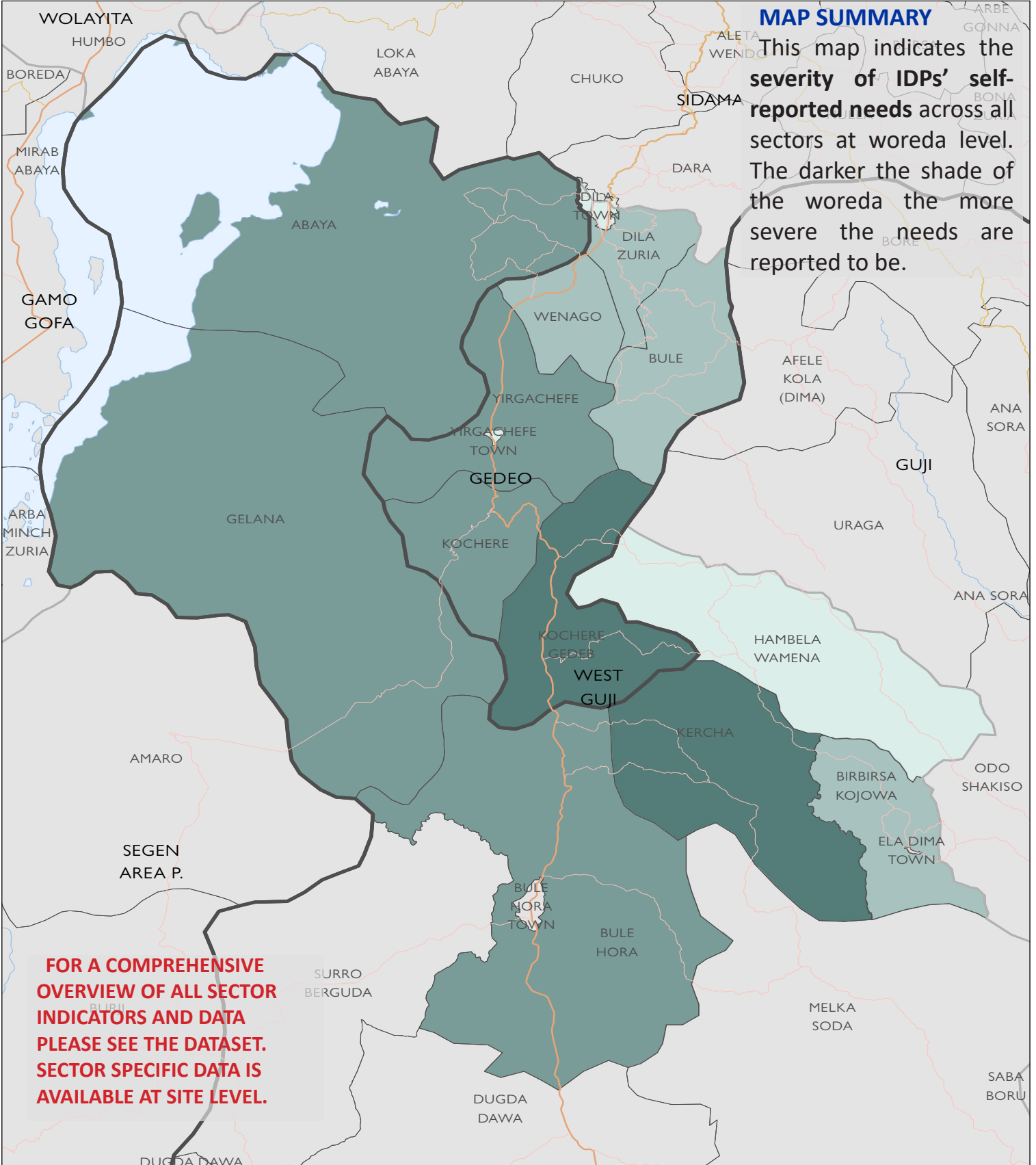


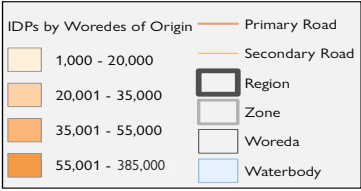
Map Production Date : 29 Mar 2019

displacement.iom.int/ethiopia | dtmethiopia@iom.int

Source Data : ESRI, IOM, UNJLC

Disclaimer : This map is for illustration purposes only. Names and boundaries on this map do not imply official endorsement or acceptance by IOM.





PLACE OF ORIGIN OF IDPS

RRA Round 6 - Gedeo and West Guji Zones

1:770,000 1 cm = 8 km

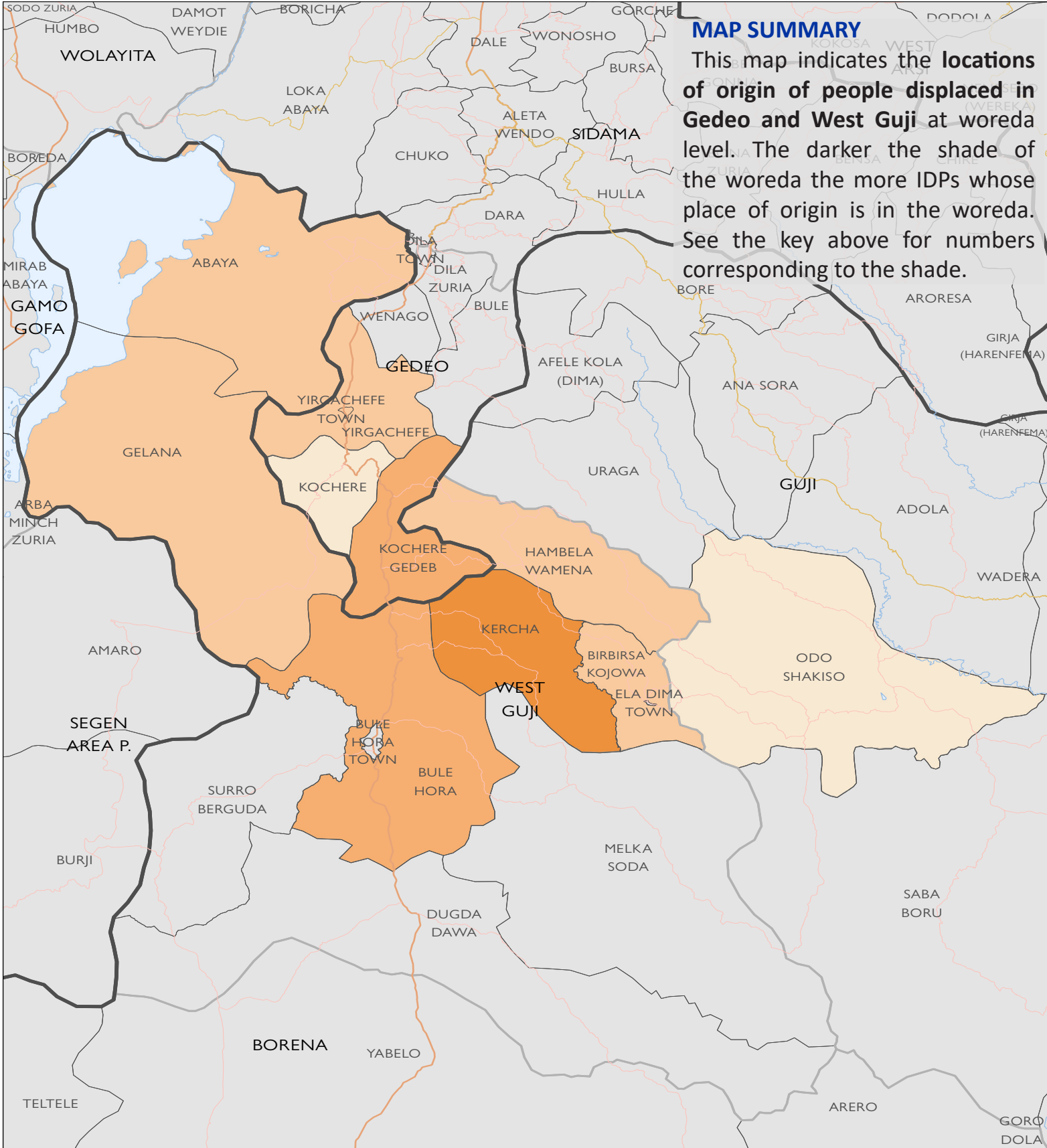


Source Data : ESRI, IOM, UNJLC

Disclaimer : This map is for illustration purposes only. Names and boundaries on this map do not imply official endorsement or acceptance by IOM.



Map Production Date : 29 Mar 2019
displacement.iom.int/ethiopia | dtmethiopia@iom.int



MAP SUMMARY

This map indicates the **locations of origin of people displaced in Gedeo and West Guji** at woreda level. The darker the shade of the woreda the more IDPs whose place of origin is in the woreda. See the key above for numbers corresponding to the shade.

Displacement Overview: Gedeo and West Guji Needs Overview

DTM Rapid Response Assessment (RRA) round 6 which was conducted from 11 to 17 March 2019 captured data on internally displaced people (IDPs) in 355 sites spread across 15 woredas in Gedeo and West Guji zones. As the map on page one indicates, Gedeb, Kerca and Bule Hora are the woredas currently hosting the largest numbers of IDPs.

Gedeb is host to 163,731 displaced people. Of these, 76,386 (47%) are in collective sites and 87,345 (53%) are living in host communities. Since RRA round 5 (conducted in February 2019), there has been a significant increase of 54,875 IDPs. This increase is largely owed to an inflow of an additional 54,752 IDPs distributed across an additional 10 collective sites since the previous round.

Kerca is host to 98,370 displaced people. Of these 22,706 (23%) are in collective sites and 75,664 (77%) are in host communities. Since RRA round 5, there has been a slight increase of 1,077 IDPs in Kerca from 97,293 IDPs in the previous round (February 2019). This was due to a decrease of 3,582 IDPs in collective sites but an increase of 4,659 IDPs in host communities.

Bule Hora is host to 70,663 displaced people. Of these 7,929 (11%) are in collective sites and 62,734 (89%) are in host communities. Since RRA round 5 (February 2019), there has been a decrease of 5,751 IDPs in Bule Hora, most likely caused by an outflow of IDPs from this woreda. While there has been a reduction in the number of IDPs in Bule Hora, there was an increase of one collective site and five host community sites.

DTM RRA round 6 captured data on the self-reported needs of IDPs at site level. This data was aggregated at woreda level to produce the map on page 2 which displays the severity of self-reported needs at woreda

level. While IDPs in most woredas reported significant needs in terms of WASH, shelter, NFIs, food, nutrition, health, education and protection, Gedeb, Kercha and Kochere were reported to be woredas where the needs of IDPs were most severe. DTM enumerators also observed significant levels of assessment fatigue largely caused by unmet needs. Assessment fatigue manifested in IDPs expressing frustration and hostility at the frequent needs assessments conducted while they perceived low levels of response.

Methodology

The Rapid Response Assessment is conducted at site level on a monthly basis. The tool is designed to capture timely data on displacement to inform emergency responses and involves site and host community visits conducted by DTM enumerators who are supervised by DTM field project assistants. In Gedeo and West Guji, the assessment is conducted over the course of seven days. Site visits are often conducted in coordination with local and regional authorities who facilitate access to sites and host communities. The involvement of local and regional authorities also helps to facilitate the endorsement of DTM data by ensuring transparent and observed data collection at site level.

Data is collected from key informants and through focus group discussions. DTM key informants include a wide range of individuals such as teachers, local health workers, IDP community leaders and many more. Key informants are selected based on their sphere of knowledge, access to the site and displaced community and credibility. Focus group discussions are conducted with members of the IDP community who represent different demographic fields. Household samples and a demographic calculator are used to collect information on age and sex breakdowns.

Annex I: Displacement Tracking Matrix (DTM) Gedeo/West Guji RRA Round 6 Summary Table of Displacement (as of 17 March 2019)

The total number of IDPs tracked under Rapid Response Assessment round 6 is 690,364 IDPs across 355 sites. However, for sites that were uncovered during round 6, data was extracted from round 3, 4 and 5 instead. This was done for a total of 8 sites as represented in the table below.

Round	Region	Zone	Woreda	Collective Site			Host Community			Total Households	Total Individuals	Total Sites	
				Households	Individuals	Number of Sites	Households	Individuals	Number of Sites				
RRA R6 (March 2019)	Oromia	West Guji	Abaya	239	2,019	7	7,280	36,805	18	7,519	38,824	25	
	Oromia	West Guji	Birbirs Kojowa	69	469	2	6,691	31,060	8	6,760	31,529	10	
	Oromia	West Guji	Bule Hora	1,391	7,929	10	8,860	62,734	26	10,251	70,663	36	
	Oromia	West Guji	Hambela Wamena	396	3,520	5	2,211	11,044	7	2,607	14,564	12	
	Oromia	West Guji	Kercha	2,593	15,506	20	12,684	68,135	28	15,277	83,641	48	
	Oromia	West Guji	Galana	102	517	5	8,209	43,857	14	8,311	44,374	19	
	Oromia	West Guji	Kercha Town	2,411	16,868	11	-	-	-	2,411	16,868	11	
			West Guji Total	7,201	46,828	60	45,935	253,635	101	53,136	300,463	161	
			Oromia Total	7,201	46,828	60	45,935	253,635	101	53,136	300,463	161	
		SNNPR	Gedeo	Bule	-	-	-	3,876	22,107	31	3,876	22,107	31
		SNNPR	Gedeo	Dila Zuria	140	1,040	2	2,416	16,983	19	2,556	18,023	21
		SNNPR	Gedeo	Gedeb	12,238	76,386	21	12,018	75,082	16	24,256	151,468	37
		SNNPR	Gedeo	Kochere	-	-	-	8,073	55,513	24	8,073	55,513	24
		SNNPR	Gedeo	Wenago	-	-	-	6,153	37,500	21	6,153	37,500	21
		SNNPR	Gedeo	Yirga Chafe Town	-	-	-	886	5,201	2	886	5,201	2
		SNNPR	Gedeo	Yirgachefe	1,640	10,770	8	8,224	49,453	34	9,864	60,223	42
		SNNPR	Gedeo	Dilla Town	709	4,743	1	1,228	7,831	5	1,937	12,574	6
			Gedeo Total	14,727	92,939	32	42,874	269,670	152	57,601	362,609	184	
			SNNPR Total	14,727	92,939	32	42,874	269,670	152	57,601	362,609	184	
	RRA R5 * (February 2019)	Oromia	West Guji	Kercha	6	50	1	-	-	-	6	50	1
		West Guji Total	6	50	1	-	-	-	6	50	1		
		Oromia Total	6	50	1	-	-	-	6	50	1		
		SNNPR	Gedeo	Gedeb	-	-	-	1,046	7,417	2	1,046	7,417	2
			Gedeo Total	-	-	-	1,046	7,417	2	1,046	7,417	2	
		SNNPR Total	-	-	-	1,046	7,417	2	1,046	7,417	2		
RRA R4 * (November 2018)	Oromia	West Guji	Birbirs Kojowa	-	-	-	53	250	2	53	250	2	
	Oromia	West Guji	Kercha	800	7,200	1	1,214	3,161	2	2,014	10,361	3	
		West Guji Total	800	7,200	1	1,267	3,411	4	2,067	10,611	5		
		Oromia Total	800	7,200	1	1,267	3,411	4	2,067	10,611	5		
RRA R3 * (September 2018)	Oromia	West Guji	Kercha	-	-	-	624	4,368	1	624	4,368	1	
		West Guji Total	-	-	-	624	4,368	1	624	4,368	1		
		Oromia Total	-	-	-	624	4,368	1	624	4,368	1		
		SNNPR	Gedeo	Gedeb	-	-	-	766	4,846	1	766	4,846	1
			Gedeo Total	-	-	-	766	4,846	1	766	4,846	1	
		SNNPR Total	-	-	-	766	4,846	1	766	4,846	1		
Grand Total				22,734	147,017	94	92,512	543,347	261	115,246	690,364	355	

* Information for RRA Round 6 uncovered sites were extracted from previous rounds.

For further information, data, analysis and questions, please feel free to contact the DTM Ethiopia Team at dtmethiopia@iom.int or visit the DTM Ethiopia website: displacement.iom.int/ethiopia

Following the end of data collection for RRA round 6, DTM and SMS (Site Management Support) teams on the ground continued to monitor the rapidly changing population dynamics of collective sites in Gedeo and West Guji from 29 March to 4 April 2019 and observed the following mobility patterns.

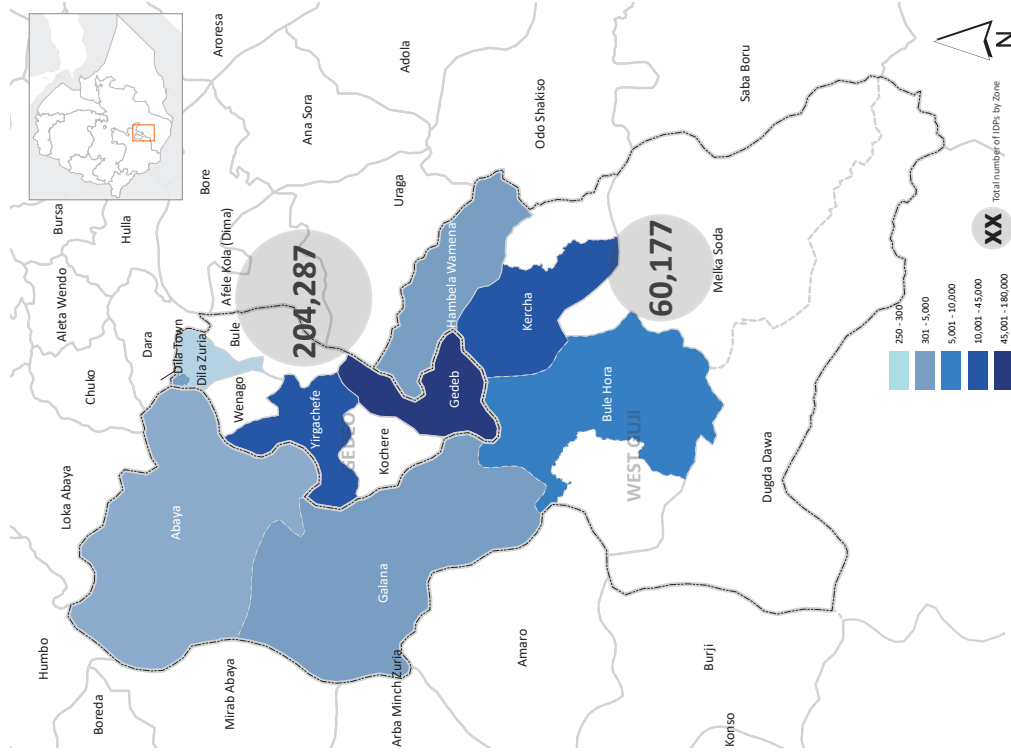
WEEKLY MOBILITY TRACKING - ETHIOPIA, WEST GUJI AND GEDEO

Publication: 9 April 2019

TOTAL ESTIMATES

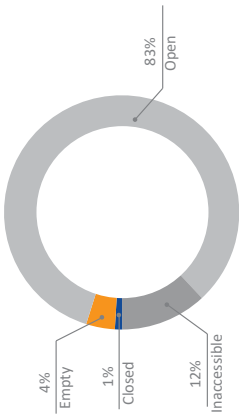


DISPLACEMENT ILLUSTRATION



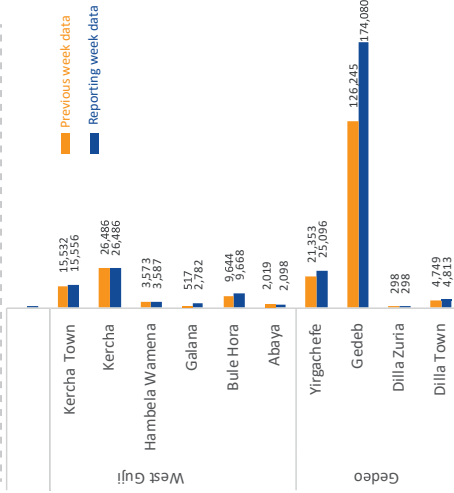
Disclaimer: The boundaries and names shown and used on this dashboard do not imply official endorsement by IOM

STATUS OF THE SITES



* 9% of the sites assessed were not accessible due to security reasons

DISTRIBUTION OF IDPS BY WOREDA



* The graph shows comparison between reporting week and data collected in the previous week.

METHODOLOGY

Data is collected on a daily basis through key informants who include IDP community leaders, local health workers and government officials.

This information will be updated on a weekly basis in order to provide regular information to the humanitarian community.

NOT FOR FURTHER CIRCULATION OR PUBLICATION, FOR OPERATIONAL AND PLANNING PURPOSES ONLY.

Feedback: sokang@iom.int
https://www.iom.int/ethiopia

OVERVIEW

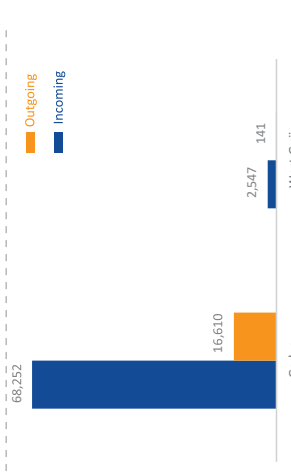
The information presented in this report was collected from 29 March to 4 April by the IOM team in all accessible collective sites in Gedeo and West Guji. A total of 101 sites were assessed on a daily basis during this period. It was observed that there was a substantial increase of 64,071 IDPs to 269,464 IDPs this week compared to the previous week where IOM recorded 205,393 IDPs.

In collaboration with IDP committees in sites, IOM teams identified in and out flows within sites. The number of people on the move this week was 87,550 IDPs. Of the moving population, 81% of IDPs were moving into the sites, whereas 19% of IDPs were going out of the sites.

TYPE OF MOVEMENT



TYPE OF MOVEMENT BY ZONES



Co-funded by the European Union