

Report Production Date: 30 November 2024 | Data collected from 27 November 12 pm to 28 November 2024 12 pm

### Overview

The International Organization for Migration monitors the movement of internally displaced individuals (IDPs). As of 28 November 2024, data indicates that 578,641 internally displaced persons (IDPs) have begun returning to their communities. Given the complexity and fluidity of population movements in the country, these observed returns cannot be considered permanent and should be viewed as a snapshot in time, as many people remain on the move.

IOM data was collected remotely through its network of key informants, including government officials, mukhtars, community representatives, and neighbourhood focal points. Population figures for collective sites have been provided by the Lebanese Red Cross and the Disaster Risk Management Unit, with the technical support of the United Nations Development Programme.

### IDP return movements by district

**578,641**  
IDPs have begun returning to their communities

**280**  
Cadasters reporting the return of IDPs

**15**  
Districts reporting the departure of IDPs

### IDPs in collective sites

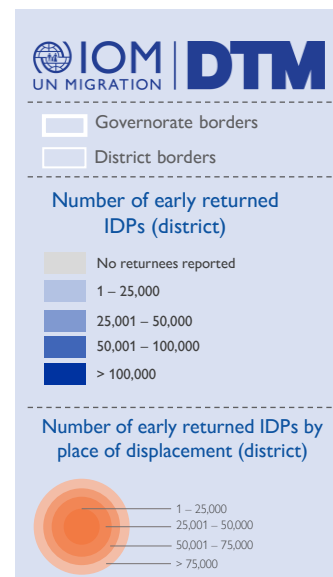
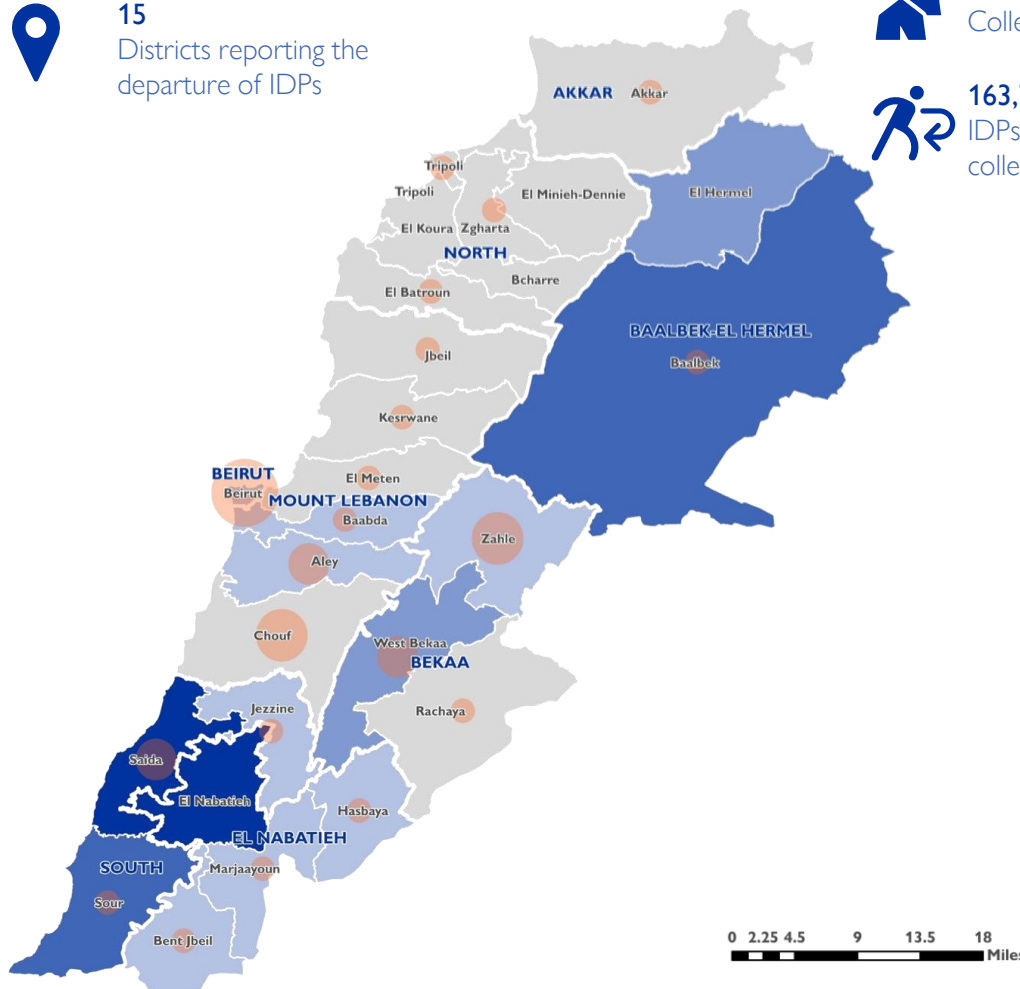
"Source: DRM/LRC"

**396**  
Collective sites open

**22,214**  
IDPs in collective sites

**613**  
Collective sites closed

**163,795**  
IDPs have left the collective sites



This map is for illustration purposes only. Names and boundaries on this map do not imply official endorsement or acceptance by IOM.