

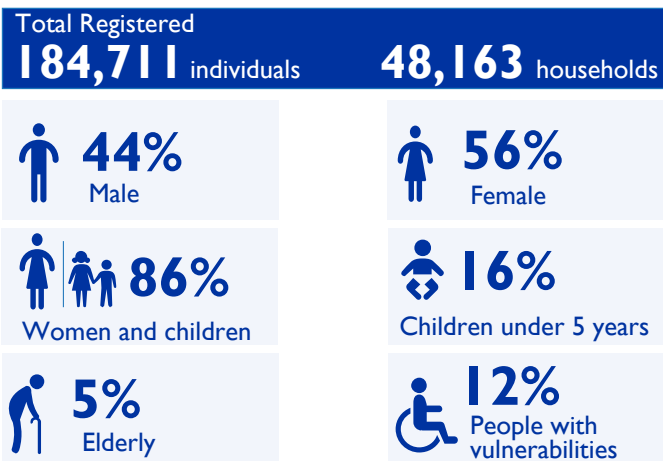
**OVERVIEW**

The biometric registration provides an in-depth data on internally displaced persons (IDPs) which help analyze their specific needs and vulnerabilities. International Organization for Migration's Displacement Tracking Matrix (DTM) developed Biometric Registration and Verification Application (BRaVe) system which captures the biometric data, for information on the individuals, households, vulnerabilities, and displacement-related triggers for programming and response over time.

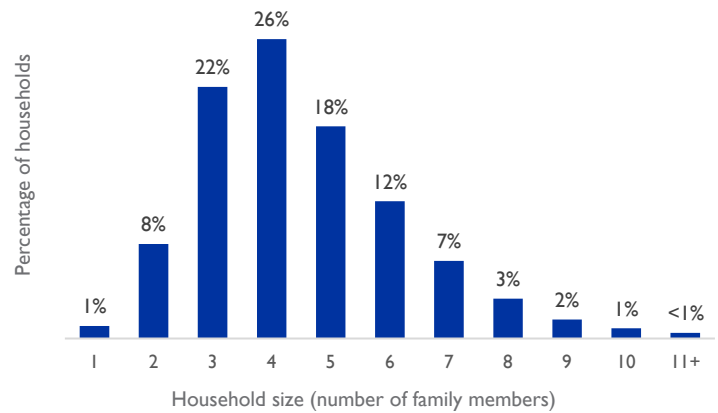
As part of the commitment to provide verified figures of IDPs in Benue State in line with the government's plans, the DTM, in partnership with UNHCR, Benue State Emergency Management Agency (BSEMA), Nigeria Red Cross Society (NRCS), National Commission for Refugees, Migrants and Internally Displaced Persons (NCFRMI), National Bureau of Statistics (NBS), National Emergency Management Agency (NEMA), Community Links and Human Empowerment Initiative and the Foundation for Justice Development and Peace (FJDP), launched the biometric registration in Benue State on 22 August 2023 following a three-day training.

As of June 2024 (DTM north-central and north-west mobility tracking report round 14), there were 500,182 IDPs in Benue State as a result of the farmers-herders conflict, which has been ongoing for decades. The biometric registration is to support the state Government and humanitarian actors in designing appropriate solutions using a protection centred approach by (1) registering all displaced persons in the selected LGAs in Benue State, (2) referring persons with disabilities, persons with specific needs and health concerns to the appropriate agencies, and (3) verifying numbers of displaced persons in the selected LGAs of Benue State.

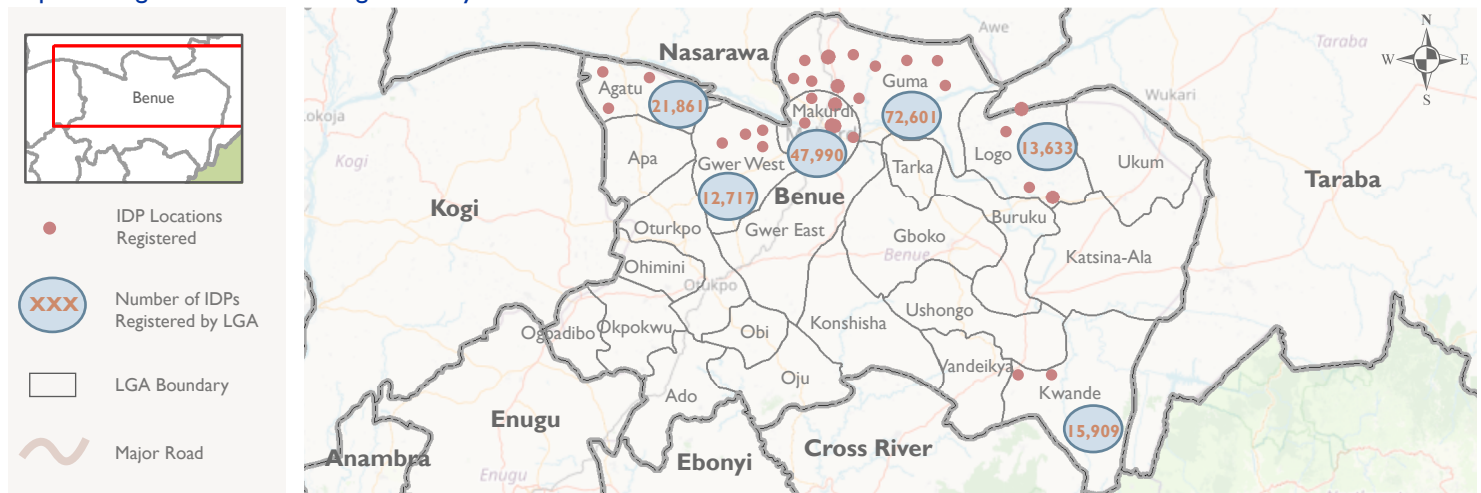
Six LGAs were mapped as locations with IDPs in Benue State based on DTM Round 11 (March 2023). So far, 65 locations have been covered, 34 locations in Makurdi, 18 in Guma, four (4) in Gwer West, four (4) in Logo, three (3) in Agatu and two (2) locations in Kwande. The registration has shown that Guma LGA host the highest number of IDPs, with 72,601 individuals (20,239 households), followed by Makurdi with 47,990 individuals (12,314 households), Agatu with 21,861 individuals (5,641 households). Kwande had 15,909 individuals (3,225 households), while Logo had 13,633 individuals (3,311 households). Gwer west had the least registered IDPs had 12,717 individuals registered from 3,433 households. During the registration, 22,868 individuals were identified with number of vulnerabilities and specific needs (including but not limited to serious medical illnesses) and were referred to UNHCR/FJDP for further support. All registered IDPs have received a biometric card with a unique number for easy identification. The registration is an ongoing process as this report is the fifth one in this series.



**Fig 1. Household size distribution**



**Map showing number of IDPs registered by LGA**



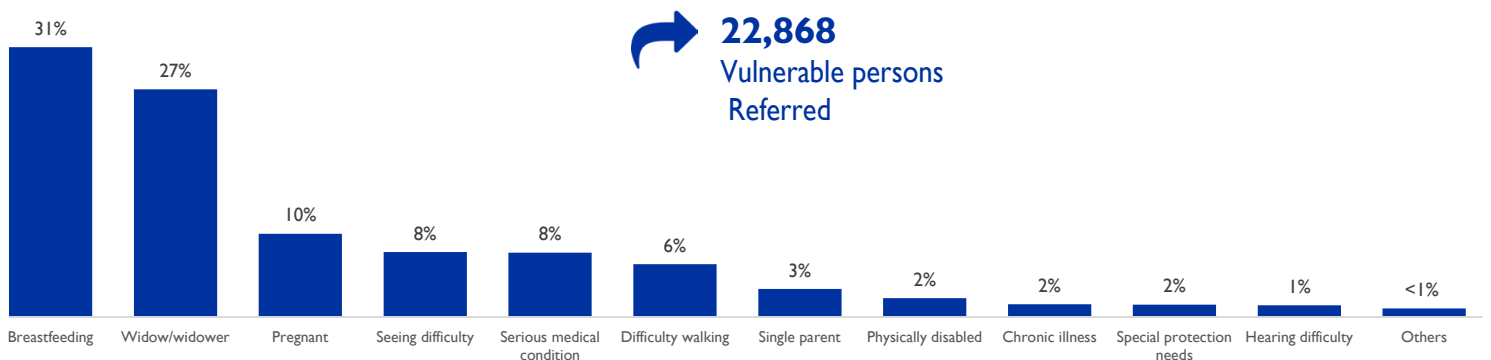
Base Map Source: © Open Street Map (and) contributors, CC-BY-SA. DTM biometric registration.

The maps in this report are for illustration purposes only. The depiction and use of boundaries, geographic names, related data shown on maps and included in this report are not warranted to be error free nor do they imply judgement on the legal status of any territory, or any endorsement or acceptance of such boundaries by IOM.

Table I. IDP Population by age and gender

Location Details					Total				Male				Female			
LGA	Ward	SSID	Place of registration	Location type	Male	Female	HH	IND	0-4y	5-17y	18-59y	60+y	0-4y	5-17y	18-59y	60+y
Agatu	Egba	BN_H049	Aila_Hc	Camp	3,101	3,612	1,815	6,713	487	1,261	1,210	143	537	1,090	1,831	154
	Obagaji	BN_H141	Obagaji_Hc	Camp	3,567	4,573	2,153	8,140	555	1,702	1,174	136	595	1,632	2,158	188
	Usha	BN_S037	Usha_Hc	Camp	3,290	3,718	1,673	7,008	545	1,526	1,115	104	531	1,274	1,779	134
Guma	Abinsi	BN_H713	Abinsi_Hc_Idp	Host Community	815	1,047	409	1,862	172	371	237	35	181	396	433	37
	Kaambe	BN_H108	Agasha_Hc_Idp	Host Community	2,615	3,095	1,121	5,710	501	1,296	730	88	468	1,266	1,200	161
		BN_H500	Azom_Hc_Idp	Host Community	283	372	126	655	69	134	66	14	78	135	141	18
	Mbabai	BN_S068	Uikpam_Idp_Hc	Host Community	1,363	1,586	861	2,949	282	572	461	48	270	471	766	79
		BN_S072	Uikpam_Idp_Camp	Camp	1,568	1,774	834	3,342	268	794	450	56	252	661	731	130
	Mbadwem	BN_S023	Gbajimba_Camp 1	Camp	331	376	200	707	71	176	71	13	66	136	138	36
		BN_H253	Daudu_Hc	Host Community	3,705	4,916	2,443	8,621	823	1,750	1,013	119	800	1,653	2,187	276
	Mbawa	BN_S025	Daudu_1_Idp_Camp	Camp	1,409	1,730	899	3,139	236	728	398	47	227	586	777	140
		BN_S253	Daudu_Camp_2	Camp	3,580	5,090	2,369	8,670	648	2,203	645	84	677	1,981	2,050	382
		BN_H237	Igban_Hc_Idp	Host Community	31	28	16	59	3	16	12	0	6	8	13	1
		BN_H238	Yelewata_Hc_Idp	Host Community	1,332	1,501	668	2,833	263	609	399	61	253	540	615	93
		BN_HC1905	Ukholo_Hc	Camp	350	384	224	734	84	125	120	21	74	114	179	17
	Nyiev	BN_S064	Orteses Camp	Camp	5,356	8,184	4,218	13,540	1,172	2,976	1,056	152	1,158	2,777	3,653	596
			Orteses_Host_Community	Host Community	1,288	1,857	960	3,145	287	623	332	46	235	645	849	128
Nzorov	BN_S023	Gbajimba_Camp 1	Camp	255	377	241	632	60	111	76	8	81	76	190	30	
		Gbajimba_Hc_Idp	Host Community	6,013	7,909	4,003	13,922	1,503	2,765	1,573	172	1,410	2,423	3,722	354	
	BN_S065	Gbajimba_Camp 2	Camp	388	659	385	1,047	101	211	71	5	97	208	285	69	
Uvir	BN_H220	Iye_Hc_Idp	Host Community	500	534	262	1,034	95	231	156	18	84	172	252	26	
Gwer West	Ikyaghev	BN_S022	Naka_Idp_Camp	Camp	856	1,132	504	1,988	146	533	143	34	121	500	369	142
			Naka_Idp_Hc	Camp	1,904	2,446	1,126	4,350	282	1,080	429	113	287	967	967	225
	Mbachothon	BN_S067	Agagebe_Idp_Camp	Camp	1,292	1,667	806	2,959	264	629	321	78	239	556	742	130
			Agagebe_Idp_Hc	Camp	1,532	1,888	997	3,420	296	698	456	82	263	648	859	118
Kwande	Mbailyor	BN_H014	Nyihemba	Host Community	2,387	2,543	1,068	4,930	332	1,124	819	112	295	1,019	1,121	108
	Yaav	BN_H014	Jato-Aka	Host Community	5,290	5,689	2,157	10,979	699	2,596	1,645	350	632	2,342	2,456	259
Logo	Mbagber	BN_S009	Anyiin Hc	Host Community	2,008	2,247	973	4,255	247	1,086	570	105	231	983	919	114
			Nkst Pri. Sch. Anyiin_Camp	Camp	2,048	2,303	1,094	4,351	290	1,022	621	115	262	894	1,013	134
	Mbayam	BN_S014	Lgea Pri. Sch Ugba	Camp	628	871	366	1,499	85	427	103	13	77	398	305	91
Makurdi	Agan	BN_H088	Abagena_Hc	Camp	286	374	187	660	73	135	70	8	63	125	170	16
		BN_H223	Agan Toll Gate_Hc	Camp	2,482	3,044	1,305	5,526	484	1,234	695	69	514	1,182	1,210	138
		BN_H224	Tse-Chagu_Hc_Idp	Host Community	74	97	39	171	13	36	23	2	17	39	36	5
		BN_H701	Anini_Hc_Idp	Host Community	163	207	91	370	39	96	22	6	44	77	77	9
		BN_H706	Imande Aku_Hc_Idp	Host Community	123	157	65	280	32	59	28	4	26	58	63	10
		BN_H709	Akundu-Tyough_Hc_Idp	Host Community	116	170	68	286	24	58	29	5	21	72	68	9
		BN_H710	Antash_Hc_Idp	Host Community	119	201	83	320	30	60	27	2	44	70	71	16
		BN_HC100	Tse Atungu_Hc	Camp	356	431	172	787	70	190	91	5	82	167	165	17
		BN_S021	Abagena Camp	Camp	1,253	1,772	993	3,025	264	630	321	38	262	573	830	107
	Ankpa/Wadata	BN_	Iniongun/Agboughul_Hc	Camp	1,010	1,143	417	2,153	203	504	271	32	182	486	409	66
		BN_H	Wadata_Hc	Camp	419	498	178	917	70	204	129	16	62	222	192	22
	Bar	BN_H705	Kighir_Hc_Idp	Host Community	76	87	33	163	16	35	25	0	14	35	34	4
		BN_H712	New City_Hc_Idp	Host Community	96	142	52	238	16	50	26	4	27	56	50	9
		BN_HC023	Tionsha_Hc_Idp	Camp	1,169	1,357	537	2,526	250	554	313	52	220	559	526	52
	Fildi	BH_H168	Gaadi_Hc_Idp	Host Community	53	60	27	113	18	24	10	1	9	24	26	1
BN_H189		Tule_Hc	Camp	192	253	97	445	49	93	44	6	37	99	109	8	
BN_H702		Apir_Hc_Idp	Host Community	274	371	143	645	46	146	69	13	58	140	154	19	
BN_H703		Yaikyo_Hc_Idp	Host Community	78	110	41	188	14	43	19	2	16	55	37	2	
BN_SH006		Tyo-Mu_Hc	Camp	246	280	125	526	50	112	77	7	44	101	127	8	
Modern Market	BN_	Adaka_Camp	Camp	112	121	43	233	22	54	31	5	23	45	49	4	
	BN_H180	Adaka_Hc	Camp	948	1,064	425	2,012	149	440	323	36	177	433	422	32	
	BN_H707	Kaamem_Hc_Idp	Host Community	259	314	117	573	49	114	87	9	33	136	126	19	
	BN_H708	Gbonko_Hc_Idp	Host Community	63	83	30	146	13	26	24	0	16	30	33	4	
	BN_H711	Ijaha_Hc_Idp	Host Community	168	201	71	369	32	95	36	5	33	86	73	9	
	BN_SH003	Bam Bam_Idp_Hc	Camp	779	887	346	1,666	156	407	192	24	142	365	336	44	
North Bank I	BN_H010	Yagba_Hc_Idp	Host Community	300	422	195	722	62	156	62	20	63	183	151	25	
	BN_H600	Ward 1 Hc_Idp	Host Community	2,285	3,049	1,264	5,334	482	1,230	494	79	510	1,229	1,174	136	
North Bank II	BN_H020	Nepa Quarters_Hc	Host Community	788	1,184	581	1,972	203	369	198	18	227	362	553	42	
	BN_H072	Baka_Hc_Idps	Camp	510	847	426	1,357	90	294	112	14	111	308	387	41	
	BN_H073	Asase_Hc_Idps	Host Community	1,012	1,429	561	2,441	196	587	206	23	193	625	563	48	
		Ichwa_Hc	Host Community	604	901	459	1,505	162	266	167	9	138	282	441	40	
	BN_S020	Nepa Quarters Camp	Camp	728	1,075	491	1,803	132	377	203	16	152	391	484	48	
	BN_S072	Baka Camp	Camp	1,784	2,751	1,418	4,535	382	1,007	366	29	338	960	1,244	209	
	BN_S073	Ichwa_Camp	Camp	1,555	2,428	1,234	3,983	341	828	342	44	302	861	1,039	226	
<b>Grand Total</b>					<b>81,105</b>	<b>103,606</b>	<b>48,163</b>	<b>184,711</b>	<b>15,333</b>	<b>40,764</b>	<b>21,997</b>	<b>3,011</b>	<b>14,907</b>	<b>37,845</b>	<b>44,944</b>	<b>5,910</b>

Fig 2. Percentage of vulnerability



**DISCLAIMER:** The figures presented in this report only show progress for the biometrically registered IDPs in selected LGAs in Benue State as of 31 August 2024. The registration is ongoing, and data will keep changing until the end of the exercise.

## REGISTRATION OF CHILDREN UNDER 10 YEARS OF AGE

**10,269**  
Children registered

**9**  
Camps covered

In a remarkable collaborative effort, the International Organization for Migration (IOM) DTM and the National Population Commission (NPC) in Benue State have achieved a significant milestone. This partnership has trained 30 NPC staff (18 male and 12 female) to undertake the vital task of registering children under 10 years old in internally displaced persons (IDP) camps within Guma and Makurdi LGAs, north-central Nigeria.

The need for this initiative was long overdue, as many children in these IDP camps lacked formal identification, putting them at risk of statelessness. The introduction of birth certificate registration within the camps represents a transformative step toward securing the identities and rights of these children.

This successful registration signifies a major milestone in protecting the identities of children in IDP camps. It highlights the vital role of collaborative efforts in meeting the needs of vulnerable populations, ensuring every child is recognized and granted their fundamental rights. The registration took place across nine camps in Guma and Makurdi LGAs, with Ortese camp recording the highest number of registered children (1,823). Daudu 2 camp followed with 1,804 registered children. Baka camp had 1,382 registered children, followed by Dauda 1 camp with 1,229, Ichwa camp with 1,227, Uikpam camp with 1,019, Gbajimba camp 2 with 955 children, NEPA quarters camp with 583 children and Gbajimba camp 1 with 247 registered children.

Fig 3. Demographic breakdown of registered children

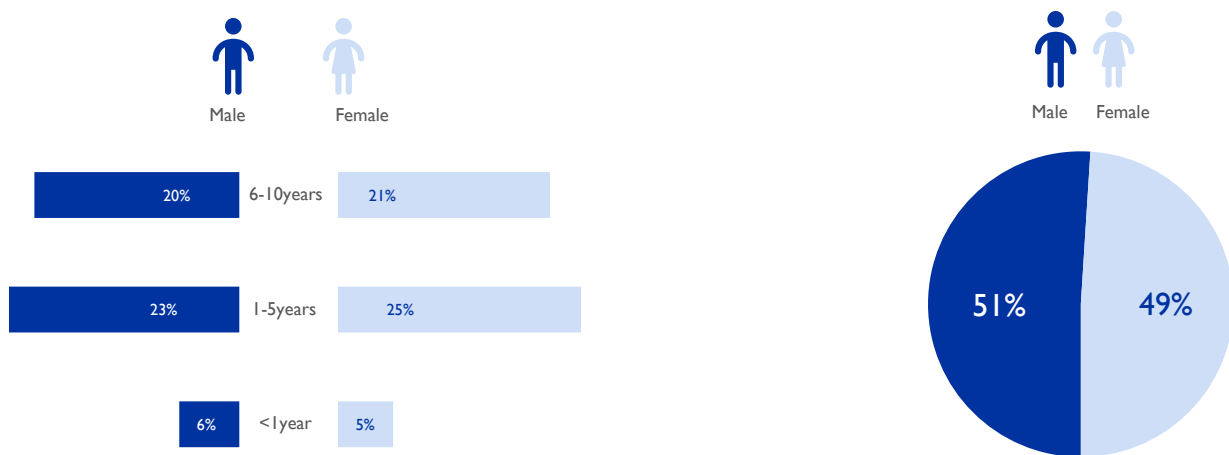


Table 2. Registered children by age and gender

Location Details			<1 year		1-5 years		6-10 years		Total
LGA	Ward	Name of Camp	Male	Female	Male	Female	Male	Female	
Guma	Mbabai	Uikpam camp	68	68	248	221	226	188	1,019
	Mbawa	Daudu 1	67	95	276	275	265	251	1,229
		Daudu 2	81	106	481	410	376	350	1,804
	Nyiev	Ortese camp	124	109	462	441	357	330	1,823
	Nzorov	Gbajimba camp 1	15	10	50	47	74	51	247
		Gbajimba camp 2	38	25	249	230	200	213	955
Makurdi	Agan	Baka	52	55	330	294	326	325	1,382
		Ichwa	52	62	328	300	232	253	1,227
		NEPA Quarters	25	23	152	137	121	125	583
<b>Grand Total</b>			<b>522</b>	<b>553</b>	<b>2,576</b>	<b>2,355</b>	<b>2,177</b>	<b>2,086</b>	<b>10,269</b>

**DISCLAIMER:** The figures presented in table 2 only show progress for the registration of internally displaced children under the age of 10 in selected LGAs in Benue State as of 31 August 2024. The registration is ongoing, and data will keep changing until the end of the exercise.