

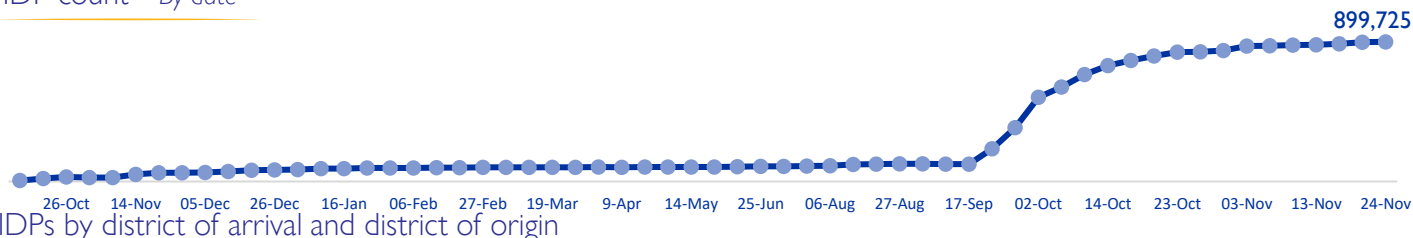
MOBILITY SNAPSHOT – Round 65

Report Production Date: 25 November 2024 | Data collected up till 4 pm on 24 November 2024

Overview

The International Organization for Migration (IOM) conducts daily monitoring of population movements to support preparedness and response efforts. This work is carried out in partnership with the Disaster Risk Management Unit, technically supported by the United Nations Development Programme, to triangulate and verify data from IOM's mobility tracking exercise and the Lebanese Red Cross household registration exercise.

IDP count – By date

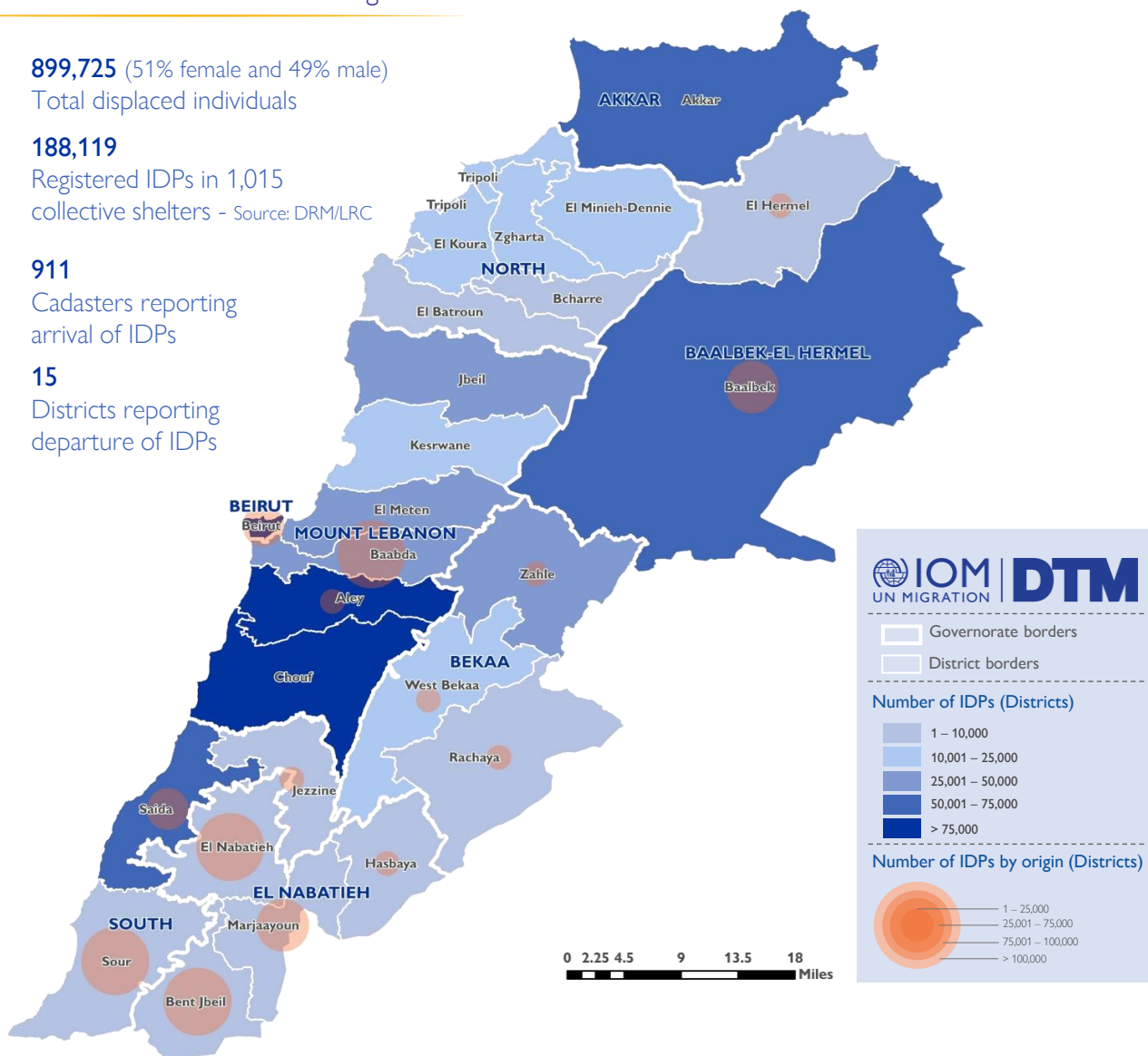


899,725 (51% female and 49% male)
Total displaced individuals

188,119
Registered IDPs in 1,015 collective shelters - Source: DRM/LRC

911
Cadasters reporting arrival of IDPs

15
Districts reporting departure of IDPs



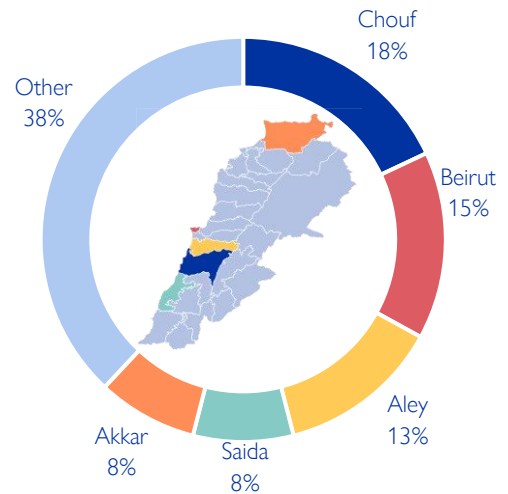
This map is for illustration purposes only. Names and boundaries on this map do not imply official endorsement or acceptance by IOM.

*DRM/LRC conducts household level registration for IDPs to inform direct assistance. This complements IOM's mobility tracking which captures an estimate of the total IDP population to inform national preparedness and response planning, as well as resource mobilisation.

Displacement within Lebanon – By district of arrival

Governorate	District	# of Cadasters	IDPs
Mount Lebanon	Chouf	84	157,490
Beirut	Beirut	12	137,857
Mount Lebanon	Aley	61	115,797
South	Saida	25	74,585
Akkar	Akkar	135	67,491
Baalbek-El Hermel	Baalbek	23	54,253
Mount Lebanon	El Meten	76	48,841
Mount Lebanon	Jbeil	68	43,122
Bekaa	Zahle	39	33,015
Mount Lebanon	Baabda	48	29,016
Mount Lebanon	Kesrwane	54	23,011
North	El Minieh-Dennie	43	20,716
Bekaa	West Bekaa	26	18,185
North	Tripoli	13	15,582
North	Zgharta	31	13,857
North	El Koura	40	12,896
South	Sour	1	8,811
South	Jezzine	31	8,255
North	El Batroun	50	6,917
Bekaa	Rachaya	19	4,161
El Nabatieh	Hasbaya	11	2,897
North	Bcharre	10	1,483
El Nabatieh	Bent Jbeil	1	613
Baalbek-El Hermel	El Hermel	1	450
El Nabatieh	El Nabatieh	7	242
El Nabatieh	Marjaayoun	2	182
Total		911	899,725

Chart 1: IDPs distribution by district of arrival

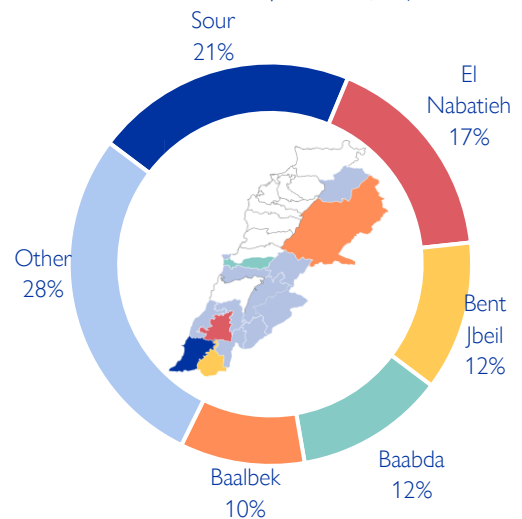


As of 24 November, Lebanon has recorded 899,725 internally displaced persons (IDPs), showing around 0.4% increase since 20 November. IDPs have sought safety in 918 cadasters throughout Lebanon. Displacement has been observed in all 26 districts across all eight governorates. 62% of the IDPs are in five districts out of the total 26 districts hosting IDPs—specifically, Chouf, Beirut, Aley, Saida, and Akkar.

Displacement within Lebanon – By district of departure

Governorate	District	IDPs
South	Sour	189,064
El Nabatieh	El Nabatieh	155,059
El Nabatieh	Bent Jbeil	110,115
Mount Lebanon	Baabda	110,072
Baalbek-El Hermel	Baalbek	89,750
El Nabatieh	Marjaayoun	89,359
South	Saida	65,073
Beirut	Beirut	33,092
Baalbek-El Hermel	El Hermel	22,328
Bekaa	West Bekaa	15,384
El Nabatieh	Hasbaya	13,186
Mount Lebanon	Aley	2,935
Bekaa	Zahle	2,335
Bekaa	Rachaya	1,012
South	Jezzine	961
Total		899,725

Chart 2: IDPs distribution by district of departure



The majority of IDPs (72%) originate from five districts, specifically, 21% are from Sour, 17% are from El Nabatieh, 12% are from Bent Jbeil, 12% are from Baabda, and 10% are from Baalbek. The remaining 28% originate from 10 different districts.

New displacement within Lebanon – By district of arrival

Governorate	District	# of Cadasters	IDPs
Mount Lebanon	Chouf	3	1,110
Mount Lebanon	El Meten	6	526
Akkar	Akkar	8	329
South	Saida	6	252
Mount Lebanon	Kesrwane	2	218
Bekaa	West Bekaa	2	155
North	Bcharre	1	150
South	Sour	1	150
El Nabatieh	Hasbaya	8	134
North	Tripoli	2	127
Mount Lebanon	Aley	5	115
North	El Koura	1	100
South	Jezzine	7	90
Bekaa	Rachaya	1	75
Mount Lebanon	Jbeil	4	32
Mount Lebanon	Baabda	2	12
Total		59	3,575

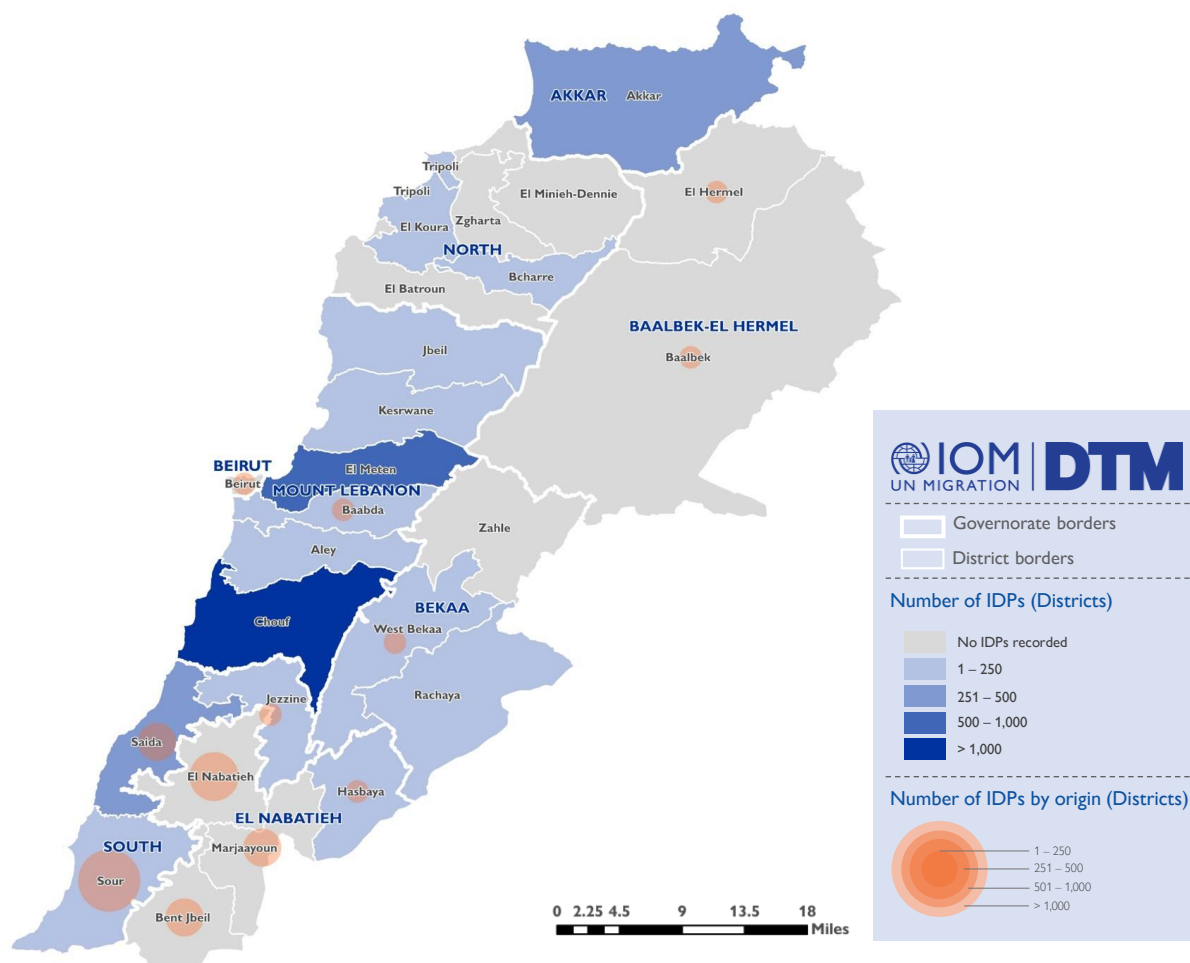
Since 20 November, there have been 3,575 new displacements. These individuals might be experiencing displacement for the first time or undergoing secondary movement.

The majority of newly displaced individuals come from Sour (30%), El Nabatieh (21%), Saida (14%), Bent Jbeil (9%), and Marjaayoun (8%) districts. The remaining 17% relocated from Baabda, Baalbek, Beirut, Hasbaya, West Bekaa, El Hermel, and Jezzine districts.

Over the past week, the top five destinations (districts) for newly displaced individuals were Chouf (31%), El Meten (15%), Akkar (9%), Saida (7%), and Kesrwane (6%).

The increase in total number of IDPs may not always align with the number of new arrivals within a specific period. This difference often occurs when Key Informants (KIs) report cumulative totals that include previously uncounted IDPs.

Newly arrived IDPs by district of arrival and district of origin



This map is for illustration purposes only. Names and boundaries on this map do not imply official endorsement or acceptance by IOM.

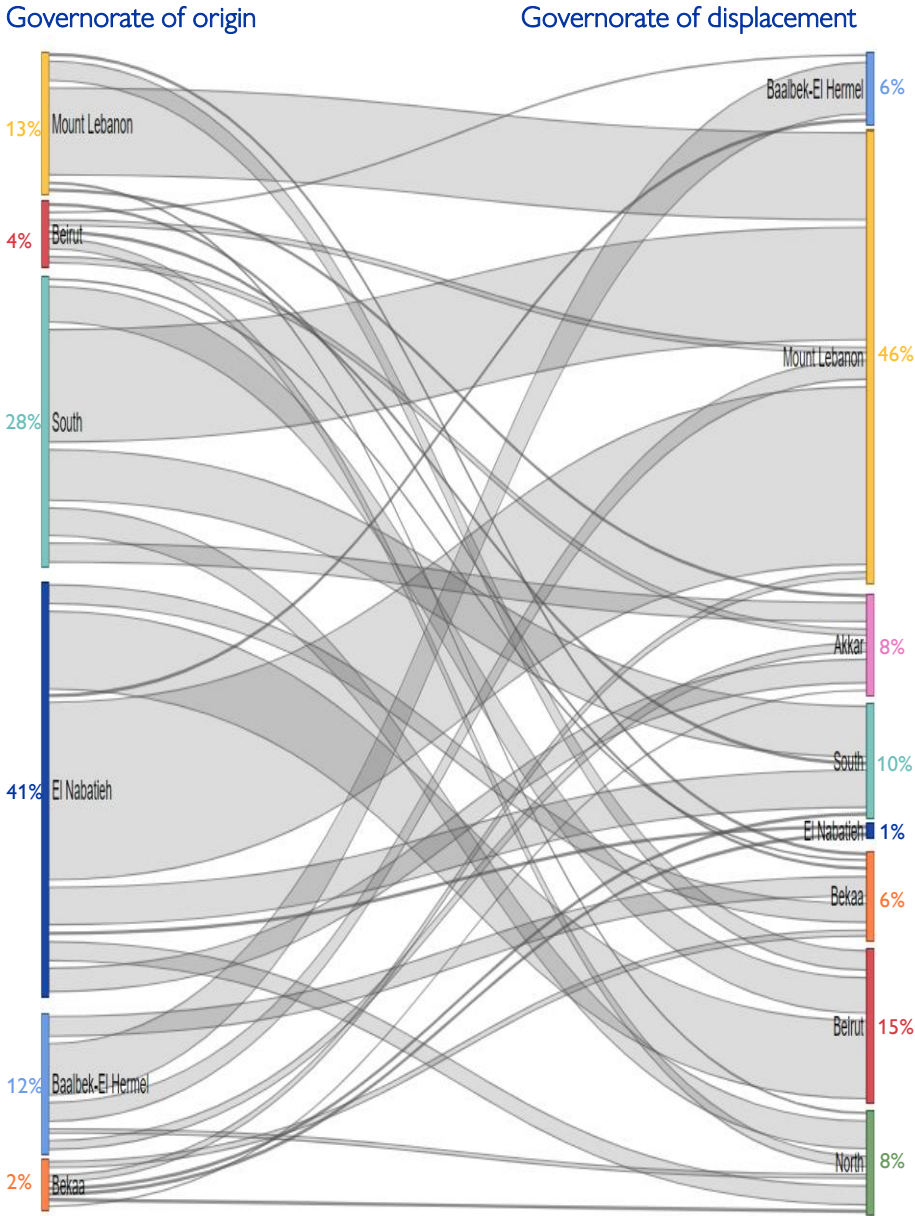
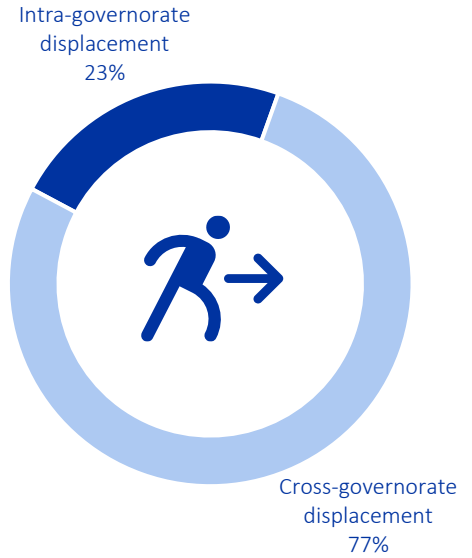
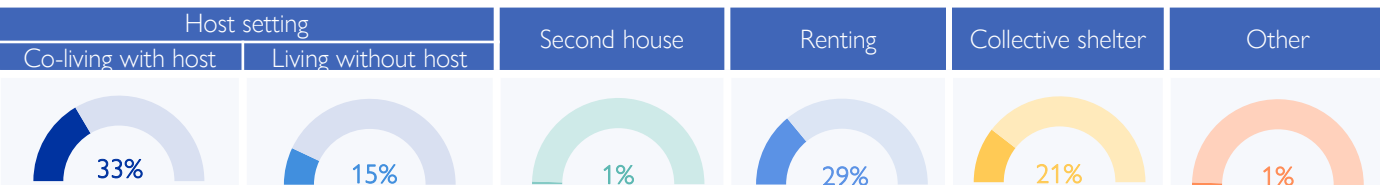


Chart 3: Displacement trends



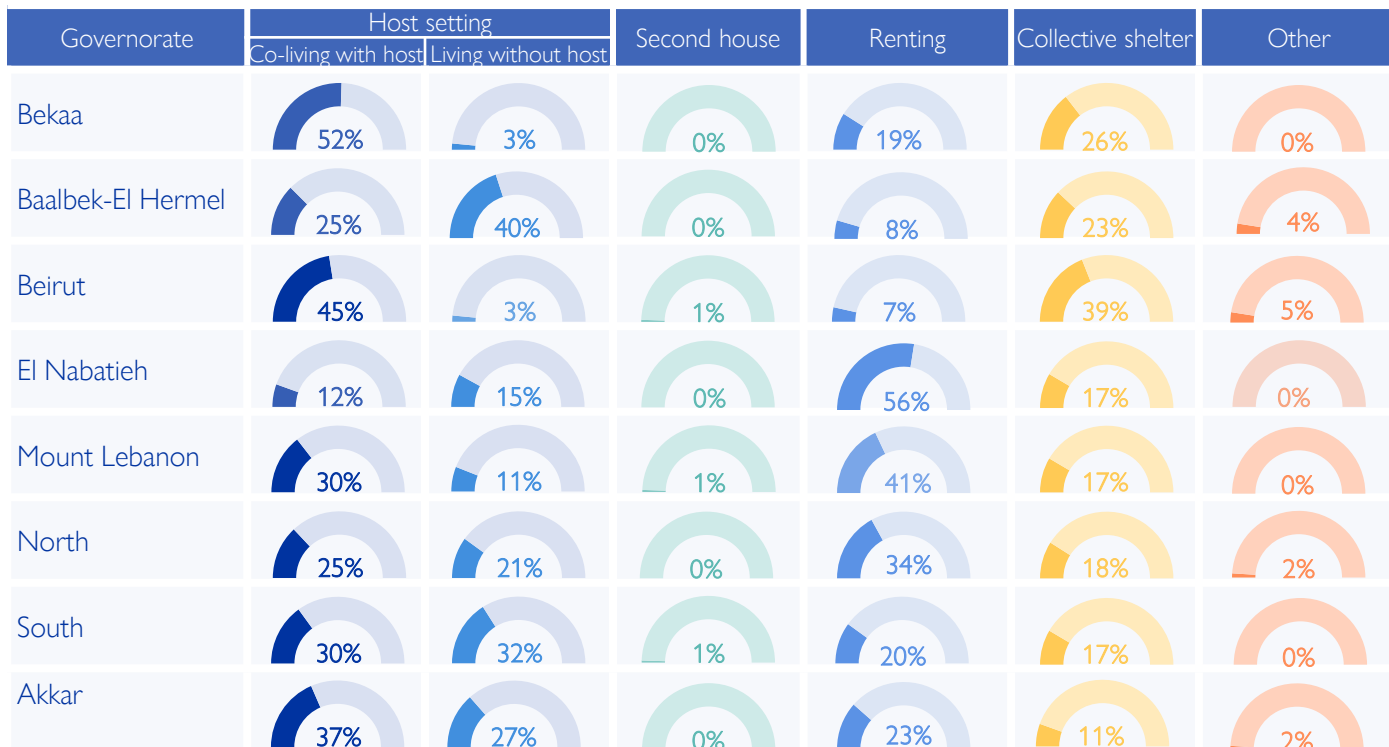
Overall, 77% of the displacement has occurred outside the boundaries of the IDPs' governorate of origin. While 41% (367,719) of the IDPs originate from El Nabatieh, of this population 99% fled to locations outside the boundaries of the governorate. Similarly, in the South governorate, where 28% (255,098) of IDPs originated, 80% of these IDPs chose to move outside the boundaries of the governorate. However, in Mount Lebanon governorate, where 12% (113,007) of IDPs originated, 78% of these IDPs chose to move internally within the boundaries of the governorate.

IDPs distribution by shelter type – By Governorate



Around 48% of IDPs are currently living in host settings, around 21% are housed in 1,015 collective shelters, while 29% have opted for rental housing. Another 1% have relocated to their secondary residences. Meanwhile, 1% are categorized under “other”, this includes unfinished buildings, tents, parks, on the streets, or self-settled sites.

Of the 48% in host settings, 299,030 are co-living with non-internally displaced families, while 135,349 reside separately. Notably, 64% of the 434,379 individuals in host settings are living in overcrowded conditions according to the perception of IOM DTM key informants.



Displacement demographics

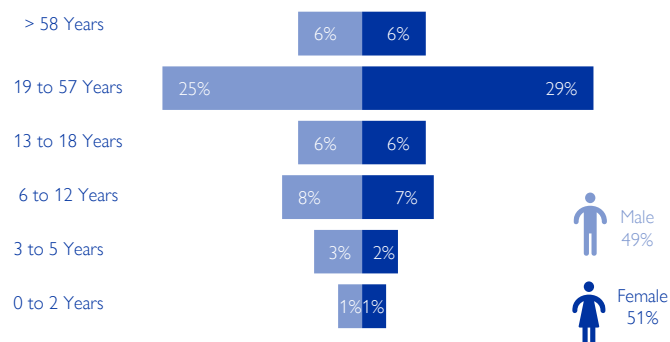


Chart 4: Displacement demographics

Individuals under 18 years old comprise 34% of IDPs, while female adults account for 35% and male adults make up 31%.

Note: These figures represent sample data of 2 households per location provided by key informants and do not reflect the entire IDP population in each area.

Methodology

The objective of the Mobility Snapshot is to support the humanitarian community in preparedness and response planning. Multi-layered data is routinely captured through Rounds using a suite of methodological tools designed to track and monitor displacement. These tools are in line with the [DTM Global Methodological Framework](#).

Data is collected nationwide through a combination of face-to-face and remote data collection methods, utilizing a network of over 50 enumerators and 1,500 key informants. These key informants consist of government officials, mukhtars, community representatives, and neighborhood focal points.

The following citation is required when using any data and information included in this information product: "International Organization for Migration (IOM), November 2024. DTM Mobility Snapshot, Round 65 IOM, Lebanon". For more information on terms and conditions of DTM reports and information products, please refer to <https://dtm.iom.int/terms-and-conditions>.