

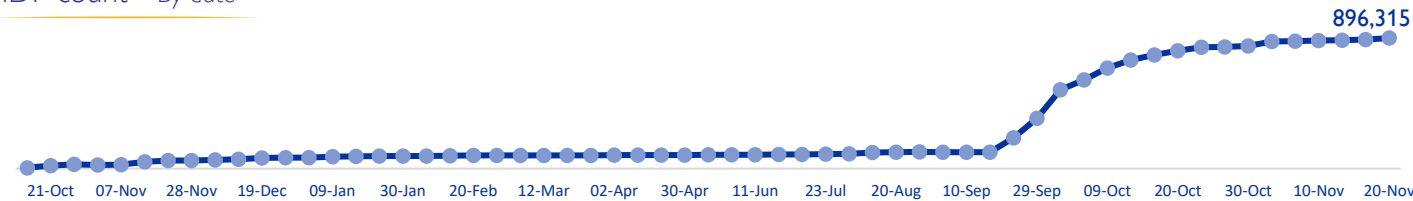
# MOBILITY SNAPSHOT – Round 64

Report Production Date: 21 November 2024 | Data collected up till 4 pm on 20 November 2024

## Overview

The International Organization for Migration (IOM) conducts daily monitoring of population movements to support preparedness and response efforts. This work is carried out in partnership with the Disaster Risk Management Unit, technically supported by the United Nations Development Programme, to triangulate and verify data from IOM’s mobility tracking exercise and the Lebanese Red Cross household registration exercise.

## IDP count – By date



## IDPs by district of arrival and district of origin



**896,315** (51% female and 49% male)  
Total displaced individuals



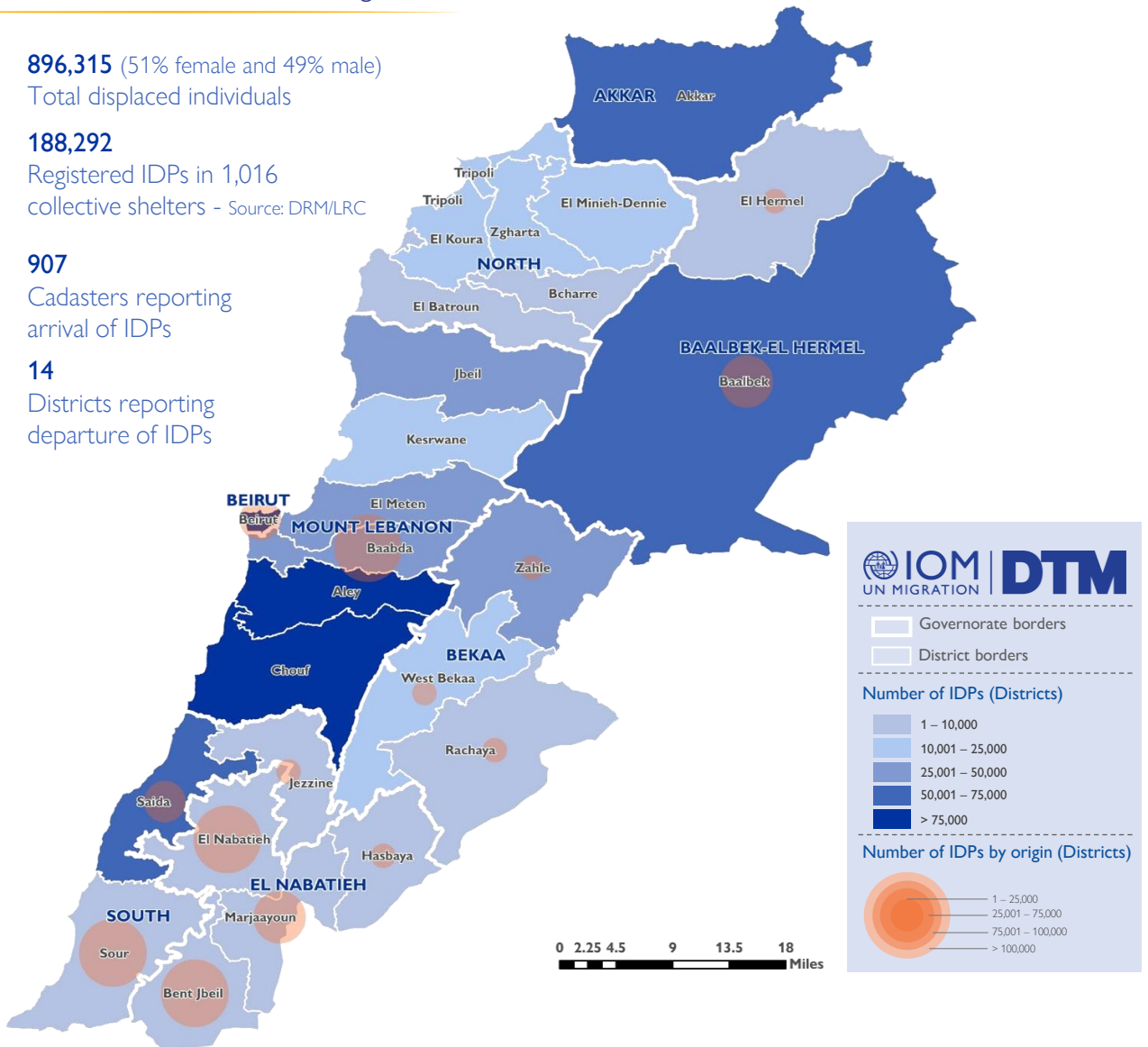
**188,292**  
Registered IDPs in 1,016  
collective shelters - Source: DRM/LRC



**907**  
Cadasters reporting  
arrival of IDPs



**14**  
Districts reporting  
departure of IDPs



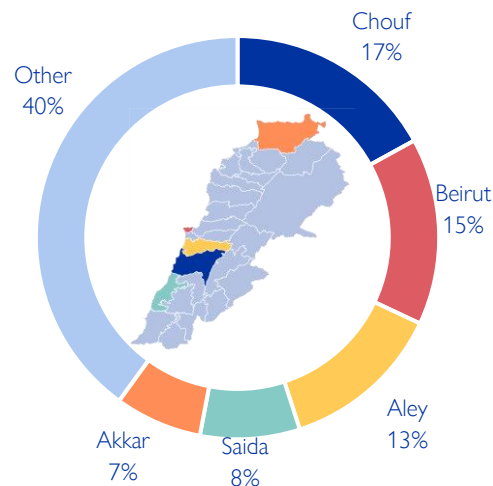
This map is for illustration purposes only. Names and boundaries on this map do not imply official endorsement or acceptance by IOM.

\*DRM/LRC conducts household level registration for IDPs to inform direct assistance. This complements IOMs mobility tracking which captures an estimate of the total IDP population to inform national preparedness and response planning, as well as resource mobilisation.

## Displacement within Lebanon – By district of arrival

Governorate	District	# of Cadasters	IDPs
Mount Lebanon	Chouf	84	155,942
Beirut	Beirut	12	138,211
Mount Lebanon	Aley	61	115,783
South	Saida	25	74,379
Akkar	Akkar	134	65,955
Baalbek-El Hermel	Baalbek	23	54,663
Mount Lebanon	El Meten	76	48,440
Mount Lebanon	Jbeil	67	43,296
Bekaa	Zahle	39	32,984
Mount Lebanon	Baabda	47	28,836
Mount Lebanon	Kesrwane	54	22,847
North	El Minieh-Dennie	43	21,871
Bekaa	West Bekaa	26	18,029
North	Tripoli	13	15,467
North	Zgharta	30	13,569
North	El Koura	40	12,736
South	Sour	1	8,661
South	Jezzine	31	8,018
North	El Batroun	50	6,892
Bekaa	Rachaya	19	4,090
El Nabatieh	Hasbaya	11	2,808
North	Bcharre	10	1,337
El Nabatieh	Bent Jbeil	1	613
Baalbek-El Hermel	El Hermel	1	450
El Nabatieh	El Nabatieh	7	256
El Nabatieh	Marjaayoun	2	182
<b>Total</b>		<b>907</b>	<b>896,315</b>

Chart 1: IDPs distribution by district of arrival

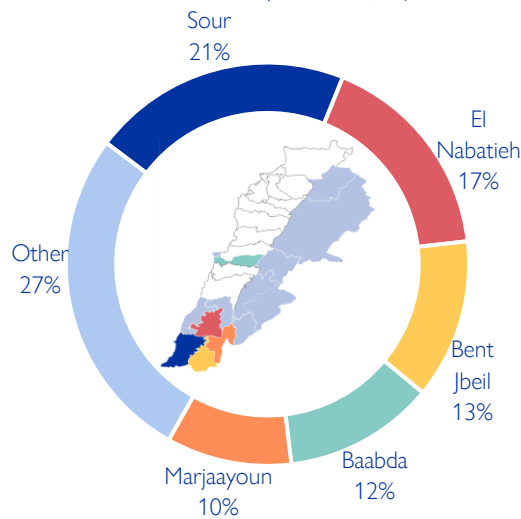


As of 20 November, Lebanon has recorded 896,315 internally displaced persons (IDPs), showing around 1% increase since 17 November. IDPs have sought safety in 907 cadasters throughout Lebanon. Displacement has been observed in all 26 districts across all eight governorates. 60% of the IDPs are in five districts out of the total 26 districts hosting IDPs—specifically, Chouf, Beirut, Aley, Saida, and Akkar.

## Displacement within Lebanon – By district of departure

Governorate	District	IDPs
South	Sour	186,669
El Nabatieh	El Nabatieh	153,051
El Nabatieh	Bent Jbeil	114,898
Mount Lebanon	Baabda	108,449
El Nabatieh	Marjaayoun	90,050
Baalbek-El Hermel	Baalbek	87,630
South	Saida	64,774
Beirut	Beirut	34,364
Baalbek-El Hermel	El Hermel	22,208
Bekaa	West Bekaa	17,310
El Nabatieh	Hasbaya	12,448
Bekaa	Zahle	2,272
Bekaa	Rachaya	1,200
South	Jezzine	992
<b>Total</b>		<b>896,315</b>

Chart 2: IDPs distribution by district of departure



The majority of IDPs (73%) originate from five districts, specifically, 21% are from Sour, 17% are from El Nabatieh, 13% are from Bent Jbeil, 12% are from Baabda, and 10% are from Marjaayoun. The remaining 27% originate from 9 different districts.

## New displacement within Lebanon – By district of arrival

Governorate	District	# of Cadasters	IDPs
Baalbek-El Hermel	Baalbek	3	2,910
Mount Lebanon	Chouf	7	2,045
Bekaa	Zahle	5	1,265
South	Saida	9	607
Mount Lebanon	El Meten	8	445
Beirut	Beirut	3	403
Mount Lebanon	Kesrwane	3	341
Akkar	Akkar	9	273
Mount Lebanon	Aley	2	220
Mount Lebanon	Jbeil	4	215
South	Sour	1	200
South	Jezzine	7	138
Bekaa	West Bekaa	2	130
North	El Koura	4	90
Mount Lebanon	Baabda	4	90
El Nabatieh	Hasbaya	2	70
North	El Batroun	3	65
North	Tripoli	2	15
<b>Total</b>		<b>78</b>	<b>9,522</b>

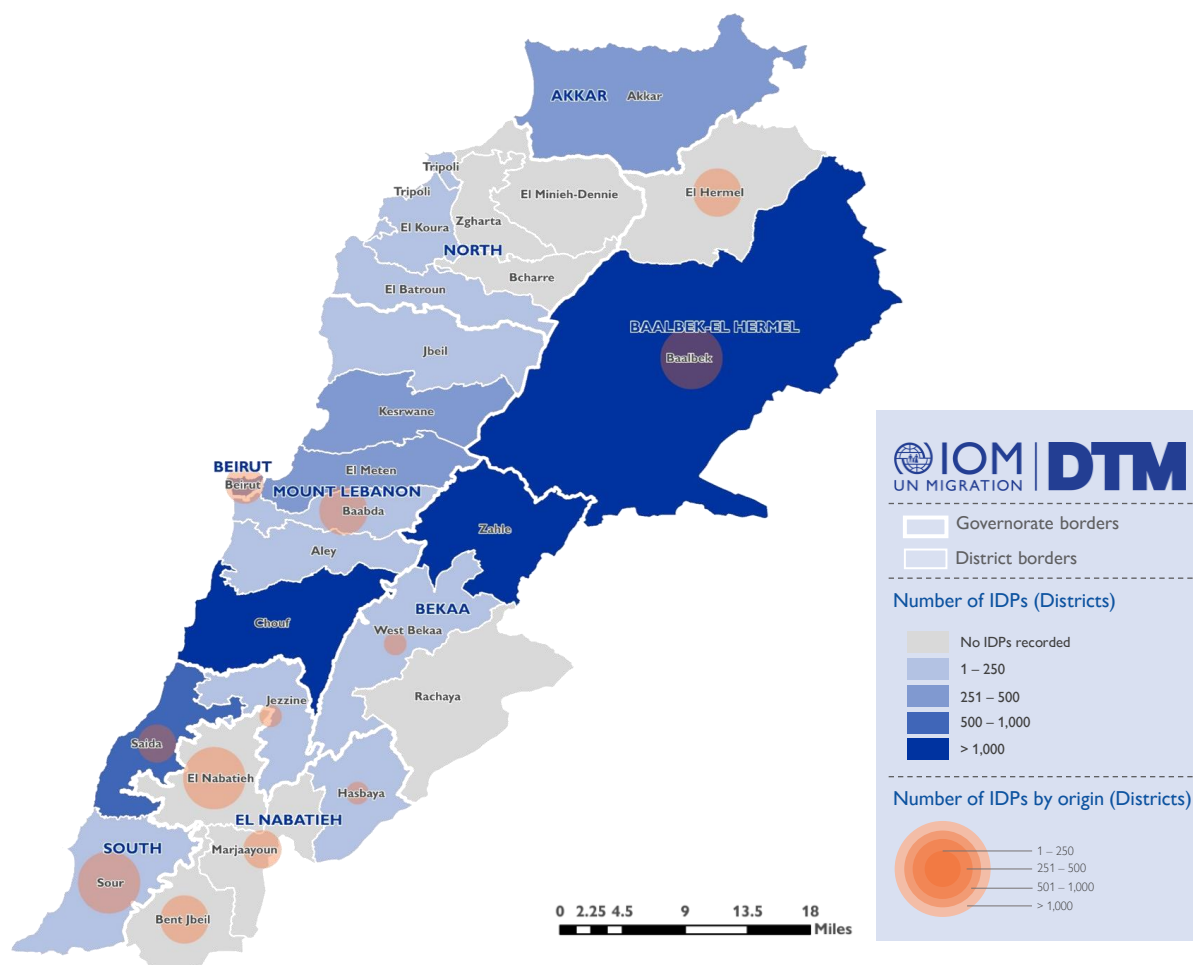
Since 17 November, there have been 9,522 new displacements. These individuals might be experiencing displacement for the first time or undergoing secondary movement.

The majority of newly displaced individuals come from Baalbek (33%), El Nabatieh (17%), Sour (13%), Baabda (9%), and El Hermel (7%) districts. The remaining 21% relocated from Bent Jbeil, Marjaayoun, Saida, Beirut, West Bekaa, Hasbaya, and Jezzine districts.

Over the past week, the top five destinations (districts) for newly displaced individuals were Baalbek (31%), Chouf (21%), Zahle (13%), Saida (6%), and El Meten (5%).

The increase in total number of IDPs may not always align with the number of new arrivals within a specific period. This difference often occurs when Key Informants (KIs) report cumulative totals that include previously uncounted IDPs.

## Newly arrived IDPs by district of arrival and district of origin



This map is for illustration purposes only. Names and boundaries on this map do not imply official endorsement or acceptance by IOM.

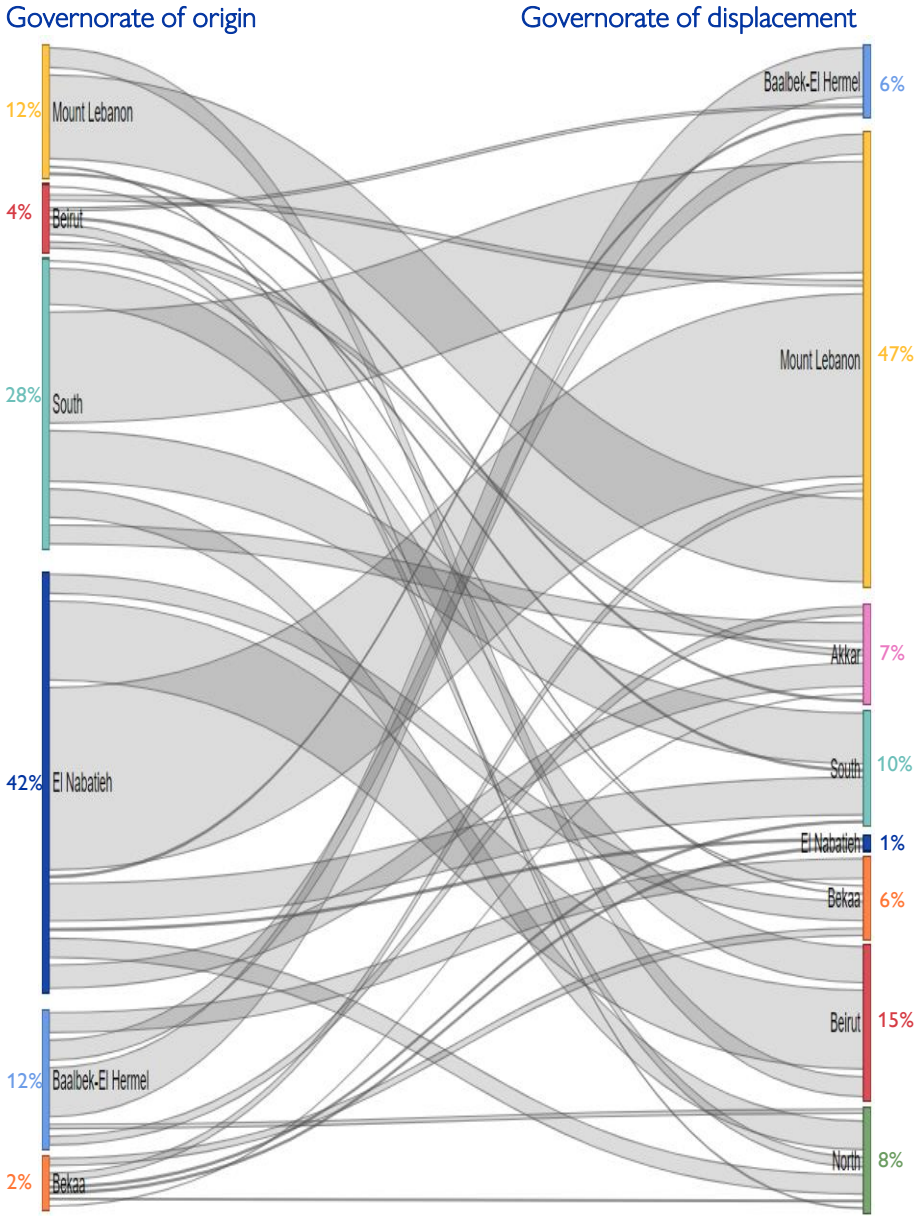
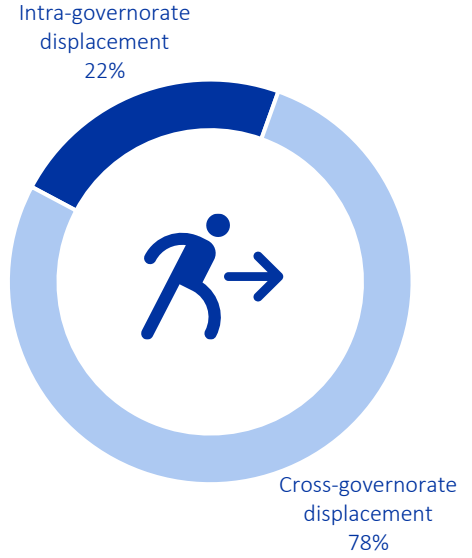
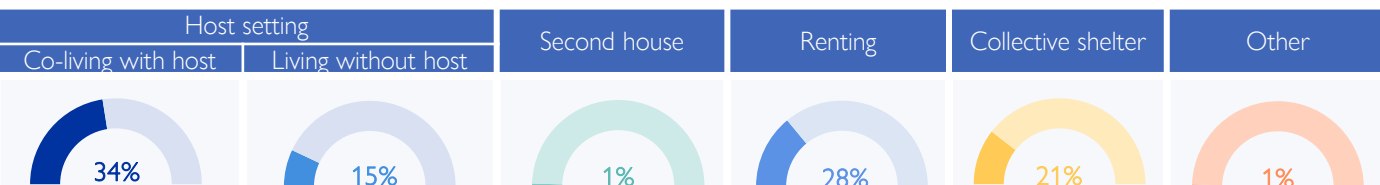


Chart 3: Displacement trends



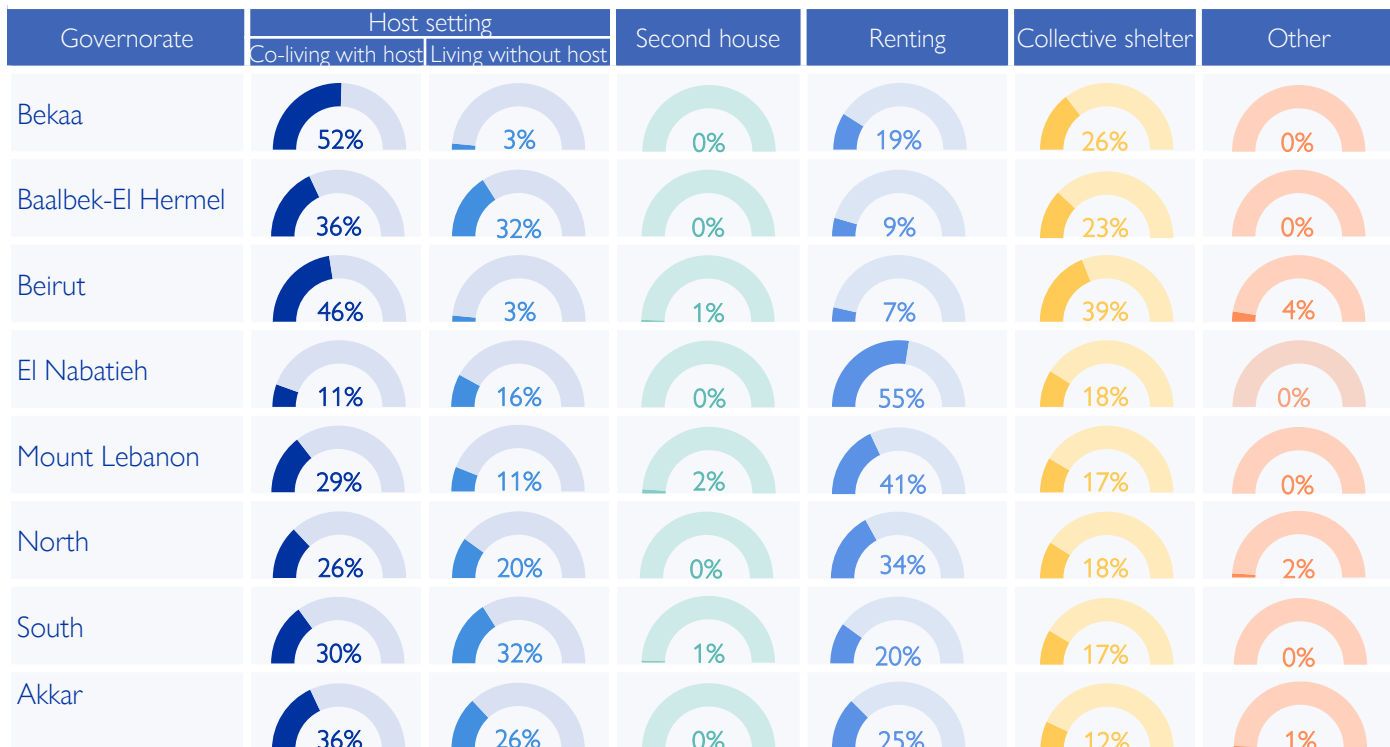
Overall, 78% of the displacement has occurred outside the boundaries of the IDPs' governorate of origin. While 42% (370,447) of the IDPs originate from El Nabatieh, of this population 99% fled to locations outside the boundaries of the governorate. Similarly, in the South governorate, where 28% (252,435) of IDPs originated, 80% of these IDPs chose to move outside the boundaries of the governorate. However, in Mount Lebanon governorate, where 12% (108,449) of IDPs originated, 78% of these IDPs chose to move internally within the boundaries of the governorate.

## IDPs distribution by shelter type – By Governorate



Around 49% of IDPs are currently living in host settings, around 21% are housed in 1,016 collective shelters, while 28% have opted for rental housing. Another 1% have relocated to their secondary residences. Meanwhile, 1% are categorized under “other”, this includes unfinished buildings, tents, parks, on the streets, or self-settled sites.

Of the 49% in host settings, 300,783 are co-living with non-internally displaced families, while 131,836 reside separately. Notably, 64% of the 432,619 individuals in host settings are living in overcrowded conditions according to the perception of IOM DTM key informants.



## Displacement demographics

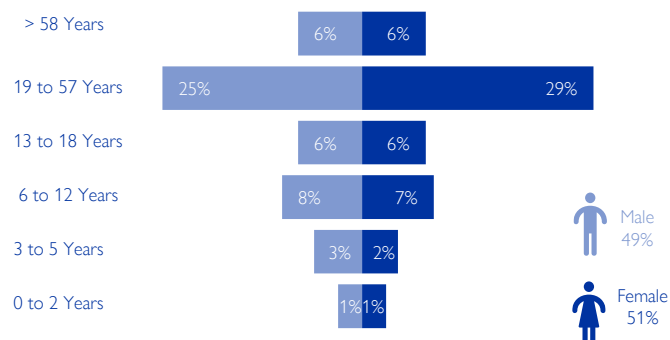


Chart 4: Displacement demographics

Individuals under 18 years old comprise 34% of IDPs, while female adults account for 35% and male adults make up 31%.

Note: These figures represent sample data of 2 households per location provided by key informants and do not reflect the entire IDP population in each area.

## Methodology

The objective of the Mobility Snapshot is to support the humanitarian community in preparedness and response planning. Multi-layered data is routinely captured through Rounds using a suite of methodological tools designed to track and monitor displacement. These tools are in line with the [DTM Global Methodological Framework](#).

Data is collected nationwide through a combination of face-to-face and remote data collection methods, utilizing a network of over 50 enumerators and 1,500 key informants. These key informants consist of government officials, mukhtars, community representatives, and neighborhood focal points.