

# DISPLACEMENT TRACKING MATRIX — NIGERIA EMERGENCY TRACKING TOOL (ETT)

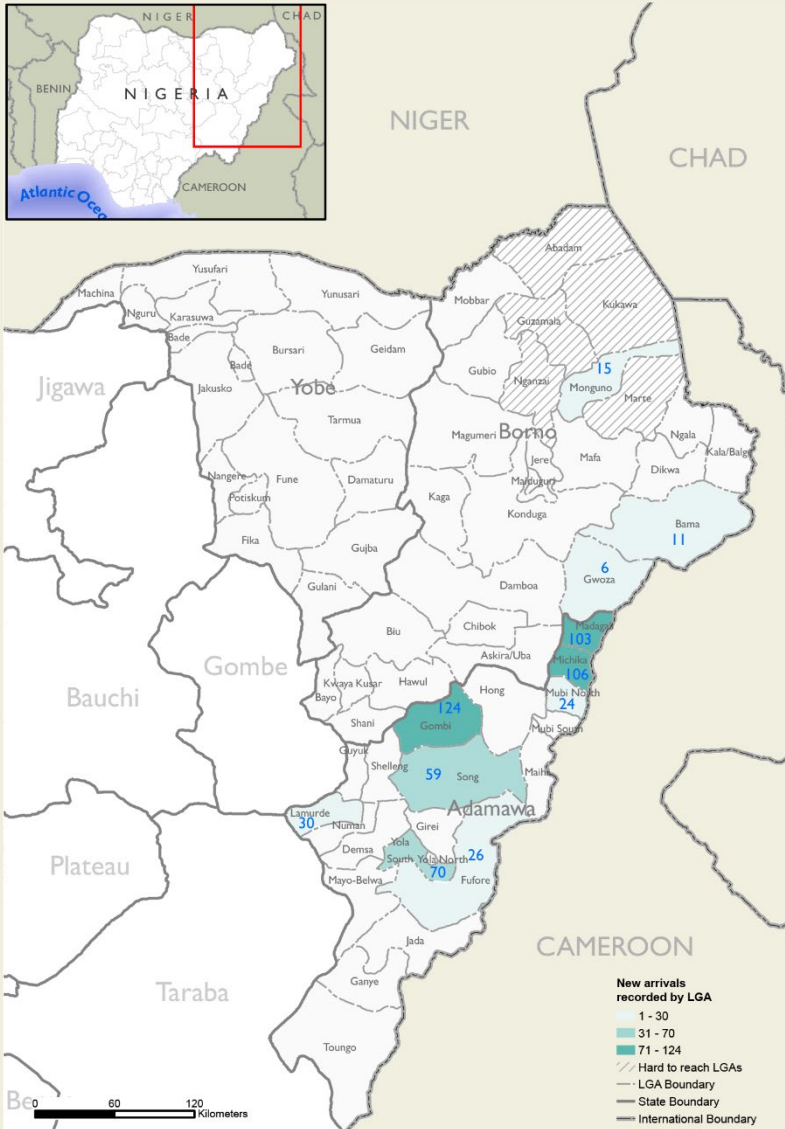
SUMMARY OF MOVEMENTS IN BORNO AND ADAMAWA STATES, 4 – 10 November 2024

DASHBOARD: 405

DATA COLLECTION: Week 45, 2024

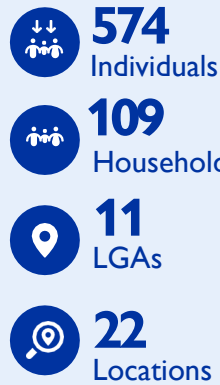
DATE OF PUBLICATION: 15 November 2024

## OVERVIEW OF DISPLACEMENTS

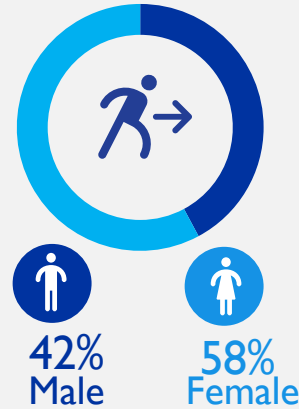


This map is for illustration purposes only. Names and boundaries on this map do not imply official endorsement or acceptance by IOM.

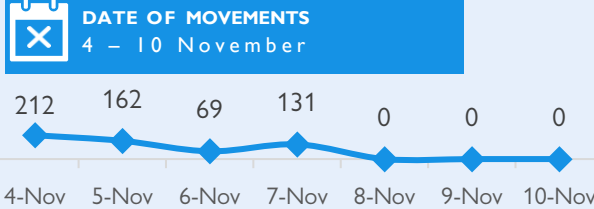
### KEY FIGURES



### GENDER BREAKDOWN



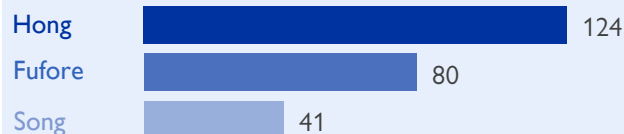
### DISPLACEMENT EVOLUTION



### TOP REPORTED NEEDS\*



### TOP AREAS OF ORIGIN



\*Multiple-choice response

### METHODOLOGY

The DTM Emergency Tracking Tool (ETT) is deployed to track and collect information on large and sudden population movements, provide frequent updates on the scale of displacement and quantify the affected population when needed. As a sub-component of the mobility tracking methodology in Nigeria, ETT utilizes direct observations and a broad network of key informants to capture the best estimates of the affected population per location, enabling targeted humanitarian response planning.

### LIMITATIONS

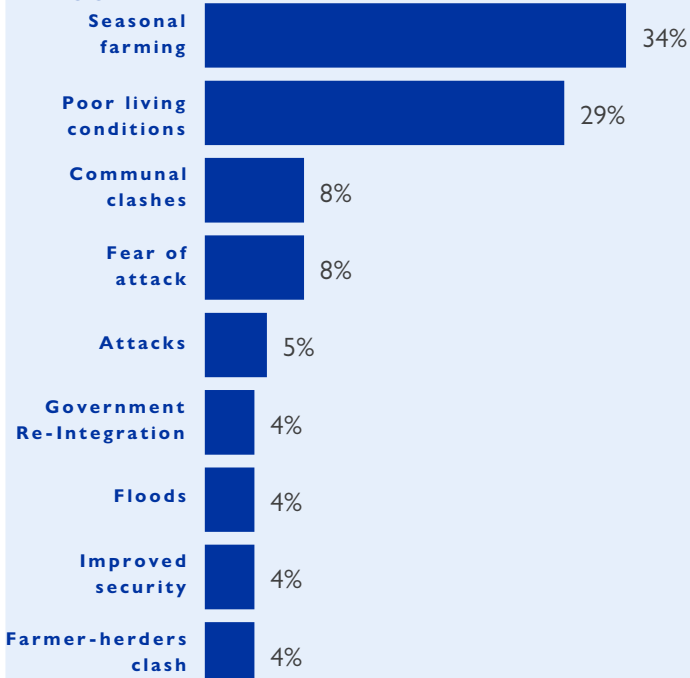
The ETT figures reported are not cumulative of all the affected persons thus far but rather provide a snapshot of the current displacement situation on the date indicated. The data and information reported on this dashboard are related solely to the movements caused by the triggers on page two between 4 – 10 November 2024.

### ALERT SUMMARY

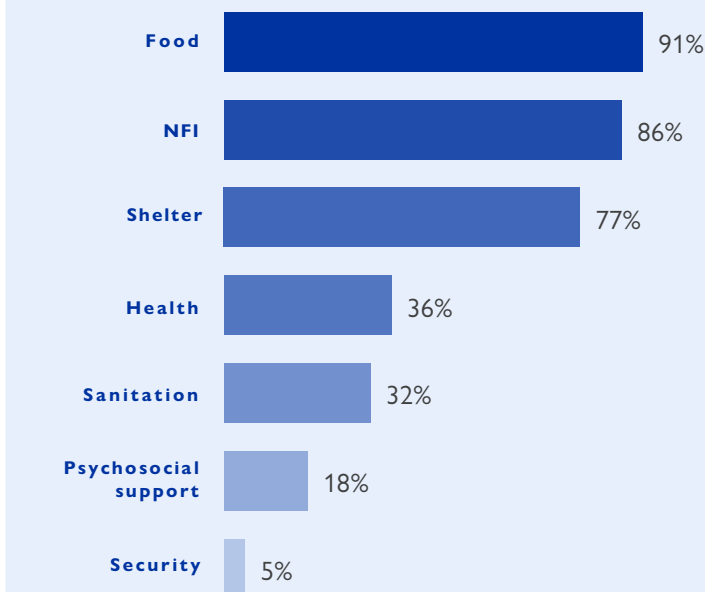
Between 4 and 10 November 2024, a total of 574 new arrivals were recorded at locations in Adamawa and Borno states. The new arrivals were recorded at locations in Bama, Gwoza and Monguno local government areas (LGAs) of the most conflict-affected Borno State, in Fufore, Gombi, Lamurde, Madagali, Michika, Mubi North, Song and Yola South LGA of Adamawa State.

ETT assessments identified the following movement triggers: seasonal farming (199 individuals or 34%), poor living conditions (167 individuals or 29%), communal clash (46 individuals or 8%), fear of attack (45 individuals or 8%), attack (29 individuals or 5%), government re-integration (24 individuals or 4%), flood (22 individuals or 4%), improved security (21 individuals or 4%) and farmers-herders clash (21 individuals or 4%).

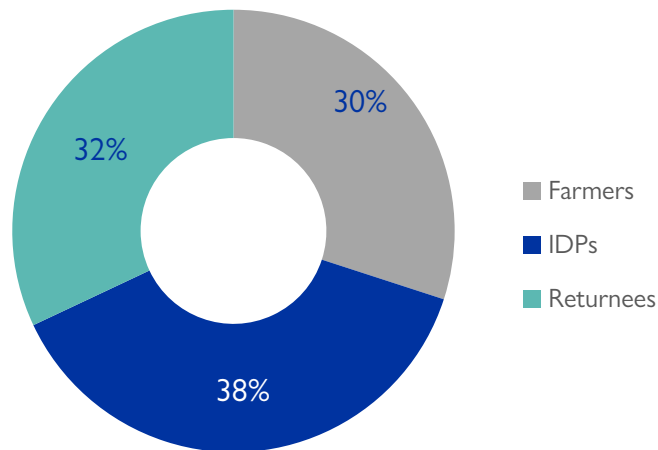
### PERCENTAGE OF INDIVIDUALS BY MOVEMENT TRIGGER



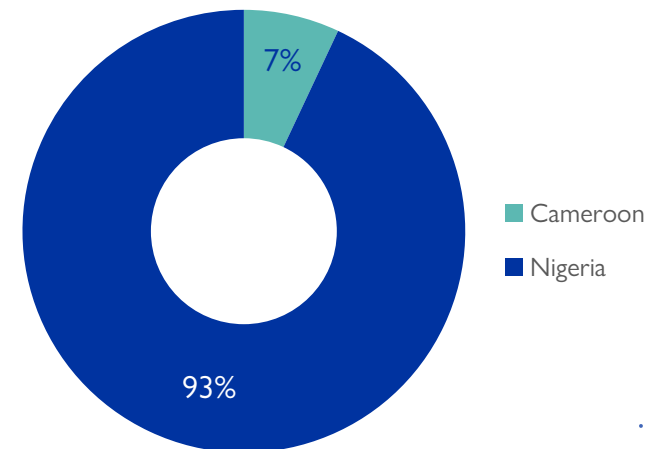
### NEEDS EVOLUTION\*



### ARRIVING POPULATION



### COUNTRY OF DEPARTURE OF THE POPULATION



### NEW ARRIVALS SCREENING BY NUTRITION PARTNERS



**59 MUAC**

Children (6 – 59 months)  
Screened for malnutrition.  
Category of screened children.

Green: 48

Yellow: 6

Red: 5



### MALNUTRITION SCREENING SUMMARY OF THE NEW ARRIVALS (CHILDREN 6 – 59 MONTHS)

Between 4 and 10 November 2024, an exhaustive nutrition screening using Mid-Upper Arm Circumference (MUAC) and oedema for acute malnutrition was conducted by sector partners for 59 children aged 6-59 months. Of the 59 children screened, the MUAC reading indicated that five were recorded in the red category, six in the yellow category and 48 in the green category. No case of oedema was reported in the five LGAs assessed.

Among the 59 children screened, 39 arrived from neighbouring countries (39 in Mobbar LGA); of all the 39 children measured; 34 were in green, five were in yellow and none in red category. All children found with acute malnutrition have been admitted to the treatment programme.

LGA	MUAC Categories						Total
	Green (≥12.5cm)		Yellow (11.5cm – 12.5cm)		Red (<11.5cm)		
	Inaccessible	Accessible	Inaccessible	Accessible	Inaccessible	Accessible	
Bama	3	0	0	0	0	0	3
Gwoza	2	0	1	0	3	0	6
Michika	0	1	0	0	0	2	3
Mobbar	0	34	0	5	0	0	39
Monguno	5	3	0	0	0	0	8
<b>Total</b>	<b>10</b>	<b>38</b>	<b>1</b>	<b>5</b>	<b>3</b>	<b>2</b>	<b>59</b>

Please note, the data presented above are not surveillance results and should be interpreted with caution.

■ Nourished

■ Moderate Acute Malnutrition (MAM)

■ Severe Acute Malnutrition (SAM)

\*Multiple-choice response

**DISPLACEMENT BREAKDOWN – all movements.**

Arrival location			Movement location			Number of individuals
State	LGA	Ward	State	LGA	Ward	
Adamawa	Fufore	Beti	Adamawa	Yola South	Adarawo	26
	Gombi	Gombi North	Adamawa	Hong	Garaha	40
		Gombi South				84
	Lamurde	Lafiya	Gombe	Billiri	Billiri North	30
	Madagali	Duhu/Shuwa	Adamawa	Song	Zumo	21
		Madagali	Cameroon	Mokolo	Mogode	32
		Pallam	Borno	Chibok	Shikarkir	18
		Shelmi/Sukur/Vapura		Ngala	Old Gamboru 'A'	32
	Michika	Michika I	Adamawa	Song	Song Waje	20
		Minkisi/ Wuro Ngiki	Borno	Askira/Uba	Husara/Tampul	18
		Sina/Kamale/Kwande	Adamawa	Girei	Modire/Vinikilang	28
		Sukumu/Tillijo		Madagali	Gulak	40
	Mubi North	Lokuwa	Taraba	Jalingo	Abbare Yelwa	24
	Song	Song Gari	Adamawa	Fufore	Farang	59
	Yola South	Bole Yolde Pate	Adamawa	Fufore	Gurin	21
			Taraba	Gashaka	Mayo Selbe	14
Namtari		Adamawa	Yola South	Namtari	13	
Ngurore			Guyuk	Purokayo	22	
Borno	Bama	Borno	Bama	Mbuliya/Goniri/Siraja	11	
	Gwoza	Borno	Gwoza	Johode/Chikide/Kughum	6	
	Monguno	Monguno	Borno	Kukawa	Kukawa	6
			Cameroon	Fotokol	Fotokol	9