



DISPLACEMENT TRACKING MATRIX (DTM) TIGRAY REGION, ETHIOPIA
Summary of Key Findings
ROUND 15: January/February 2019
DATE OF PUBLICATION: 26 March 2019



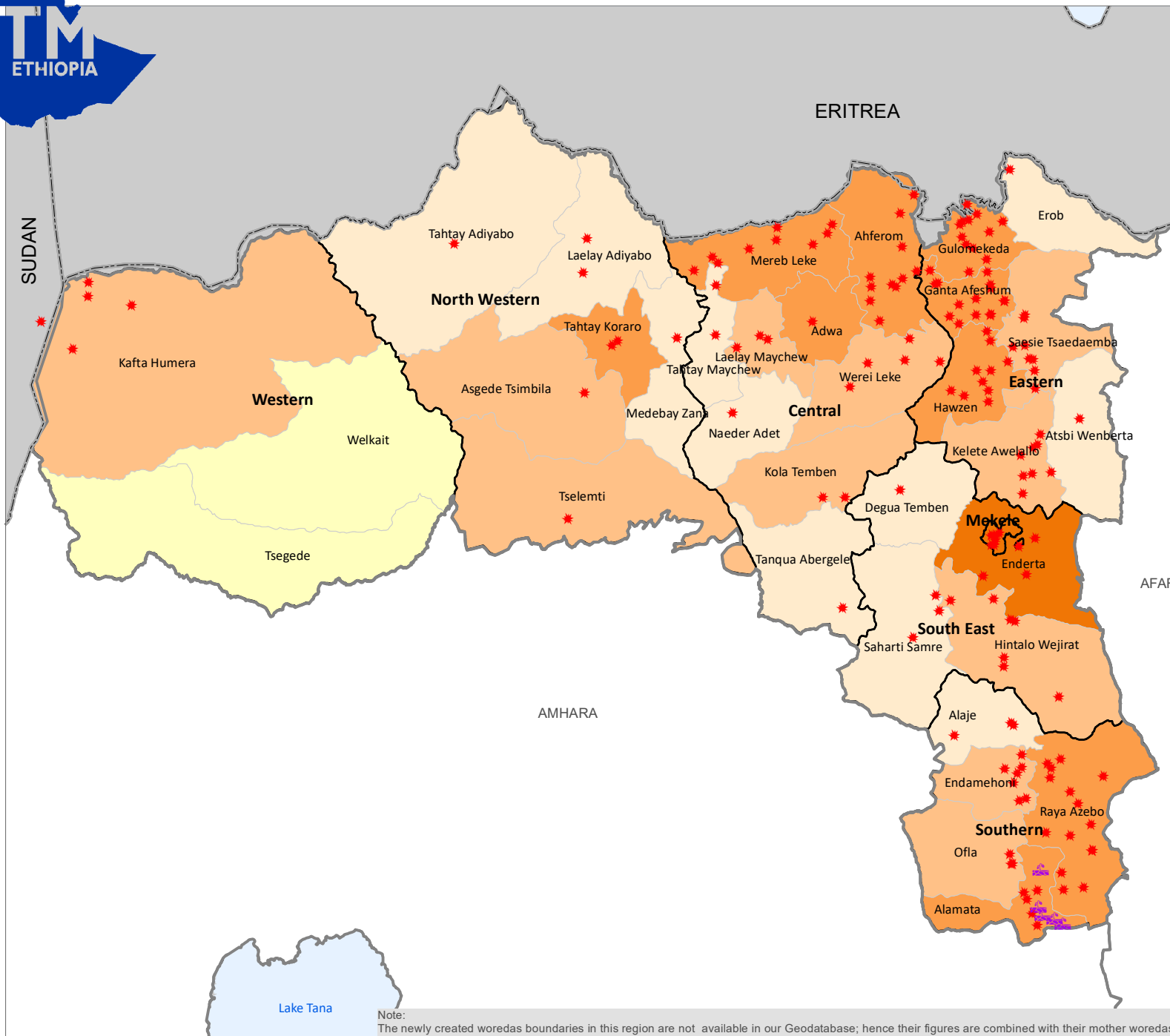
DISPLACEMENT TRACKING MATRIX (DTM) TIGRAY REGION, ETHIOPIA ROUND 15: JANUARY/FEBRUARY 2019



DTM

THE UN MIGRATION AGENCY

OVERVIEW OF DISPLACEMENT TIGRAY REGION DTM Round 15 FROM JANUARY 1 - 31, 2019

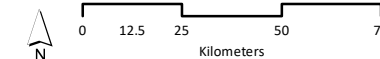


Sites by causes of displacement

- ★ Conflict
- ★ Climate induced

IDPs in assessed woredas

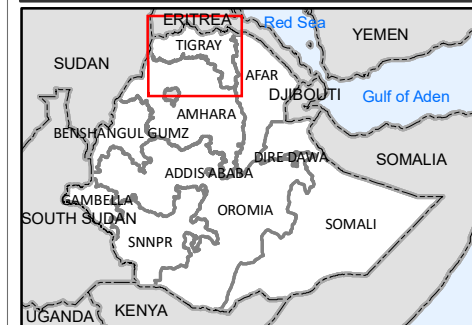
- | | |
|---|---|
| 121 - 500 | International Boundary |
| 501 - 2,500 | Regional Boundary |
| 2,501 - 10,000 | Zonal Boundary |
| 10,001 - 26,409 | Woreda Boundary |
| No IDPs | |



Sources : IOM Map production date : 21 Feb 2019

This map is for illustration purposes only. Names and boundaries on this map do not imply official endorsement or acceptance by IOM. Map Data Source: Boundary shapefile - CSA 2008

www.displacement.iom.int/ethiopia
dtmethiopia@iom.int



Note: The newly created woredas boundaries in this region are not available in our Geodatabase; hence their figures are combined with their mother woredas.



DISPLACEMENT TRACKING MATRIX (DTM) TIGRAY REGION, ETHIOPIA

ROUND 15: JANUARY - FEBRUARY 2019

TIGRAY REGION - KEY FINDINGS

LOCATION AND CAUSE OF DISPLACEMENT: 82,968 displaced individuals comprising 38,293 households in 162 displacement sites were identified in Tigray region. These figures represent an increase of 10,855 individuals (+15.05%), an increase of 4,845 households (+14.49%) and an increase of 13 sites (+8.72%) since round 14 (November/December 2018). None of the sites opened in 2019, while 85% of sites opened before 2018, and 15% of sites opened in 2018. Conflict was the primary cause of displacement for an estimated 98% of the displaced population.

DEMOGRAPHICS: 43% of the displaced were female and 57% were male. 37% were younger than 18 years old while 2% were over 60 years old.

SHELTER: 162 sites reported that over 25% of households were living in shelters that were below regional and cultural standards.

WASH: None of the sites meet SPHERE standards of access to over 15 liters of water per person per day. 70 displacement sites (43%) reported having no latrines.

FOOD, NUTRITION AND LIVELIHOODS: 8 sites (5%), representing 1,210 individuals reported no access to food. 96% of sites reported that IDPs did not have access to income generating activities.

HEALTH: Malaria was the primary health concern in this round of data collection with 50 sites reporting this health concern.

EDUCATION: In 59% of sites, 50% or less of the children on site are attending formal primary school. Formal primary school education is available at 99% sites. Alternative basic education (ABE) is available at none of the sites.

COMMUNICATION: 59% of sites reported that authorities were IDPs' primary source of information followed by local leaders at 21% of sites.

Figure 1 illustrates trends in stock totals of displacement in the region over time compared to recent displacement. Figure 2 shows IDP numbers disaggregated by cause of displacement over time.

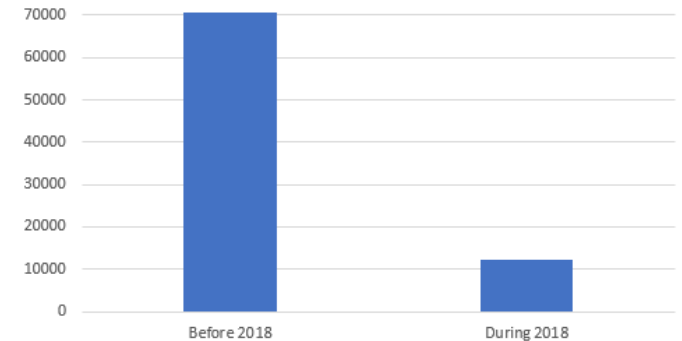


Figure 1: Trends in stock totals of displacement and new displacements before and during 2018

*All data, including graphs and maps presented in this report comprise data collected between 1 to 31 January 2019.

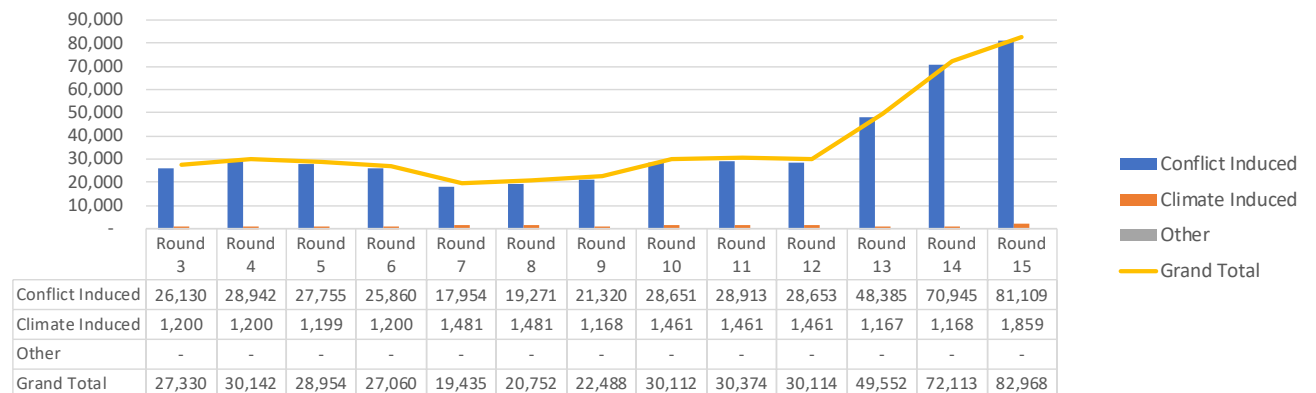


Figure 2: IDPs by cause of displacement by round



DISPLACEMENT TRACKING MATRIX (DTM) TIGRAY REGION, ETHIOPIA ROUND 15: JANUARY - FEBRUARY 2019

MOBILITY TRENDS AND CAUSE OF DISPLACEMENT

Conflict has consistently been reported as the primary cause of displacement in the region (as indicated by figure 4). A total of 81,109 IDPs were displaced before 2018 and during 2018 due to conflict. In addition to this, 2% of IDPs reported being displaced previously. Furthermore, IDPs from 3 sites were leaving the current place of displacement. Of these, IDPs from 1 site were going to the nearest village and IDPs from 2 sites intend to return to their place of origin.

Regarding the duration of sites, none of the sites identified were opened in 2019 while 15% of sites opened between January and December 2018 and 85% of the sites opened before 2018.

The majority of IDPs identified in the region were displaced to locations near their areas of origin. 11% of IDPs in the region are internally displaced from the region, within the region. Of the IDPs displaced within the region, 11% were displaced within their zone of origin.

Figure 3 shows the number of IDPs displaced by zone and cause of displacement. Figure 4 shows the distribution of IDPs by driver of displacement and time of displacement.

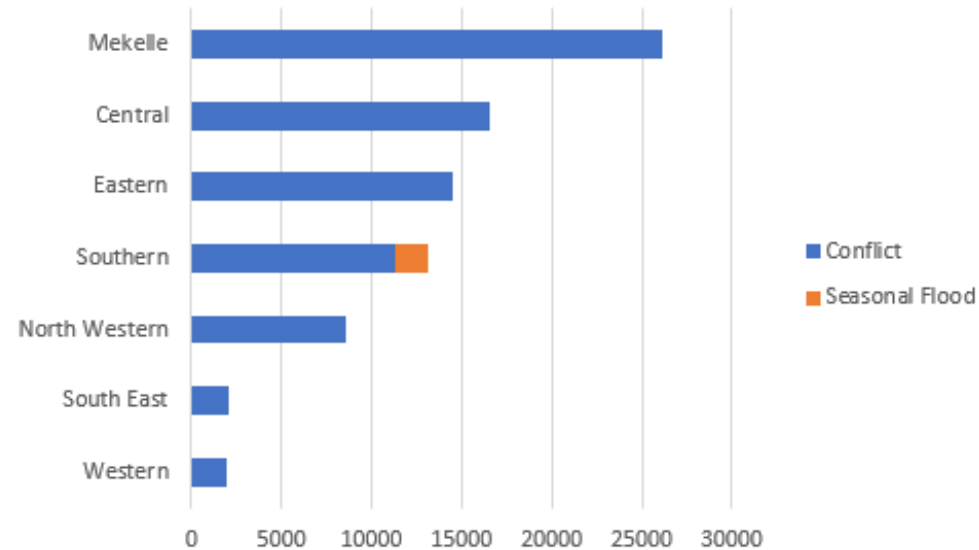


Figure 3: IDPs displaced by zone and cause of displacement

Duration	Conflict Induced	Climate Induced	Grand Total
Before 2018	68,812	1,859	70,671
During 2018	12,297	-	12,297
Grand Total	81,109	1,859	82,968

Figure 4: Distribution of IDPs by cause of displacement and time of displacement



DISPLACEMENT TRACKING MATRIX (DTM) TIGRAY REGION, ETHIOPIA ROUND 15: JANUARY - FEBRUARY 2019

DURABLE SOLUTIONS, VULNERABILITIES AND DEMOGRAPHICS

In 98% of sites, IDPs foresaw a resolution to their displacement, while IDPs at 2% of sites did not. At the remaining sites, key informants either did not know (0%), or were not asked the question in a previous round.

At 96.3% of sites, IDPs prefer reintegration as a durable solution to their displacement while at none of the sites did they prefer return. 3.7% of sites reported that IDPs prefer relocation.

Figure 5 shows the percentage of sites reporting various obstacles to returns, while figure 6 shows support IDPs need to return or reintegrate.

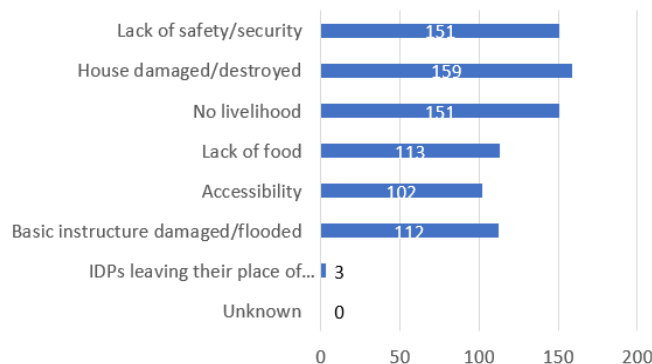


Figure 5: Number of sites reporting obstacles to return

The demographic breakdown is shown in figure 7. Individuals with specific vulnerabilities were also reported at displacement sites and are represented in figure 8.

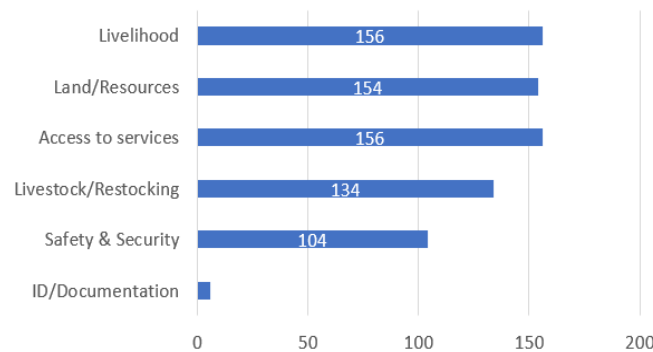


Figure 6: Number of sites by support needed to return or reintegrate

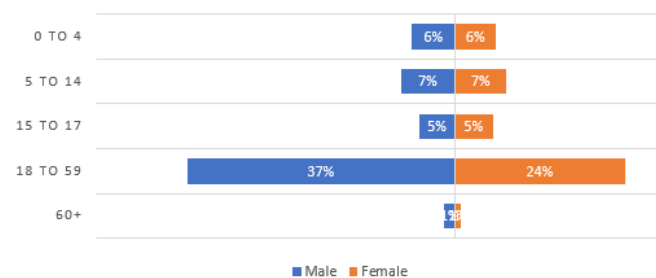


Figure 7: Demographic breakdown

Vulnerable Population	Number of IDPs
Number of breastfeeding mothers	9,379
Elderly-headed households	5,809
Elderly persons without care givers	4,808
Number of members of ethnic minorities	0
Number of members of religious minorities	0
Orphaned children	2,579
Persons with chronic diseases/serious medical conditions	769
Number of persons with disabilities over 18	804
Number of persons with disabilities under 18	503
Number of pregnant girls under 18	945
Number of pregnant women over 18	6,184
Separated children	1,449
Single female-headed households	4,282
Single male-headed households	4,592
Unaccompanied Children	670
Single-child headed Households	464
Grand Total	43,237

Figure 8: Vulnerable populations



DISPLACEMENT TRACKING MATRIX (DTM) TIGRAY REGION, ETHIOPIA

ROUND 15: JANUARY - FEBRUARY 2019

Round 14 - 15 Comparison Table

INCREASE	NEW
DECREASE	UNCOVERED/CLOSED
NO CHANGE	

Zone	Woreda	Displacement Reason	Round 15			% change in estimated # of HHs	Round 14		
			HHs	Individuals	Sites		HHs	Individuals	Sites
Central	Abiyiadi	Conflict	505	1,004	1	+13.48%	445	834	1
Central	Adwa	Conflict	2,260	3,272	1	+19.96%	1,884	3,018	1
Central	Ahferom	Conflict	1,232	4,824	11	+17.78%	1,046	4,505	6
Central	Axum	Conflict	1,021	2,251	1	+9.20%	935	2,165	1
Central	Kola Temben	Conflict	107	210	1	+59.70%	67	139	1
Central	Lalay Maychew	Conflict	54	118	2	+1.89%	53	108	2
Central	Mereb Leke	Conflict	819	3,061	10	+4.87%	781	2,854	9
Central	Naeder Adet	Conflict	87	292	1	+27.94%	68	98	1
Central	Tahtay Maychew	Conflict	252	312	1	+11.01%	227	287	1
Central	Tanqua Abergele	Conflict	91	136	1	+62.50%	56	81	1
Central	Werei Leke	Conflict	688	1,037	5	+81.05%	380	551	5
Central Total			7,116	16,517	35	+19.76%	5,942	14,640	29
Eastern	Adigrat Town	Conflict	1,464	2,251	1	+10.49%	1,325	2,092	1
Eastern	Atsbi Wenberta	Conflict	154	302	1	+40.00%	110	182	1
Eastern	Erob	Conflict	30	138	1	-18.92%	37	138	1
Eastern	Ganta Afeshum	Conflict	1,276	1,894	14	+16.64%	1,094	1,603	14



DISPLACEMENT TRACKING MATRIX (DTM) TIGRAY REGION, ETHIOPIA
ROUND 15: JANUARY - FEBRUARY 2019

Round 14 - 15 Comparison Table

INCREASE	NEW
DECREASE	UNCOVERED/CLOSED
NO CHANGE	

Zone	Woreda	Displacement Reason	Round 15			% change in estimated # of HHs	Round 14		
			HHs	Individuals	Sites		HHs	Individuals	Sites
Eastern	Gulomekeda	Conflict	1,289	2,965	12	+35.97%	948	2,138	12
Eastern	Hawzen	Conflict	1,878	3,220	10	+0.91%	1,861	3,188	10
Eastern	Kelete Awelallo	Conflict	450	788	7	+19.68%	376	583	7
Eastern	Saesie Tsaedaemba	Conflict	1,040	1,317	8	+23.37%	843	1,052	8
Eastern	Wukro Town	Conflict	928	1,665	1	+11.27%	834	1,501	1
Eastern Total			8,509	14,540	55	+14.55%	7,428	12,477	55
Mekelle	Adihaki Sub City	Conflict	1,404	3,155	1	+16.23%	1,208	2,769	1
Mekelle	Ayder Sub City	Conflict	1,372	2,381	1	+6.60%	1,287	2,214	1
Mekelle	Hadnet Sub City	Conflict	2,234	5,617	1	+8.29%	2,063	4,727	1
Mekelle	Hawelti Sub City	Conflict	2,316	5,325	1	+13.64%	2,038	6,336	1
Mekelle	Kedamay Weyane Sub City	Conflict	1,048	2,187	1	-22.08%	1,345	2,260	1
Mekelle	Quiha Subcity	Conflict	510	1,257	1	-32.18%	752	1,400	1
Mekelle	Semen Sub City	Conflict	2,242	6,213	1	+6.91%	2,097	5,586	1
Mekelle Total			11,126	26,135	7	+3.11%	10,790	25,292	7



DISPLACEMENT TRACKING MATRIX (DTM) TIGRAY REGION, ETHIOPIA
ROUND 15: JANUARY - FEBRUARY 2019

Round 14 - 15 Comparison Table

INCREASE	NEW
DECREASE	UNCOVERED/CLOSED
NO CHANGE	

Zone	Woreda	Displacement Reason	Round 15			% change in estimated # of HHs	Round 14		
			HHs	Individuals	Sites		HHs	Individuals	Sites
North Western	Asgede Tsimbila	Conflict	213	553	1	+17.03%	182	403	1
North Western	Lalay Adiyabo	Conflict	260	414	2	-5.11%	274	427	2
North Western	Medebay Zana	Conflict	107	146	1	+27.38%	84	109	1
North Western	Sheraro Town	Conflict	207	335	1	+71.07%	121	231	1
North Western	Shire Endaselasie	Conflict	2,862	5,877	1	+75.15%	1,634	3,667	1
North Western	Tahtay Koraro	Conflict	28	62	1	+3.70%	27	61	1
North Western	Tselemti	Conflict	700	1,147	1	+15.89%	604	971	1
North Western Total			4,377	8,534	8	+49.59%	2,926	5,869	8
South East	Degua Temben	Conflict	77	121	1	+18.46%	65	111	1
South East	Enderta	Conflict	84	274	3	+42.37%	59	207	2
South East	Hintalo Wejirat	Conflict	795	1,511	7	+24.22%	640	1,222	4
South East	Saharti Samre	Conflict	108	199	3	+16.13%	93	177	3
South East Total			1,064	2,105	14	+24.15%	857	1,717	10



DISPLACEMENT TRACKING MATRIX (DTM) TIGRAY REGION, ETHIOPIA
ROUND 15: JANUARY - FEBRUARY 2019

Round 14 - 15 Comparison Table

INCREASE	NEW
DECREASE	UNCOVERED/CLOSED
NO CHANGE	

Zone	Woreda	Displacement Reason	Round 15			% change in estimated # of HHs	Round 14		
			HHs	Individuals	Sites		HHs	Individuals	Sites
Southern	Alamata	Conflict	548	1,385	1	-12.74%	628	1,252	1
Southern	Endamehoni	Conflict	187	571	6	+47.24%	127	462	5
Southern	Imba Alaje	Conflict	182	305	3	+46.77%	124	186	2
Southern	Korem Town	Conflict	409	780	1	+18.21%	346	661	1
Southern	Maychew	Conflict	457	780	1	+42.81%	320	655	1
Southern	Ofla	Conflict	104	142	2	+76.27%	59	136	1
Southern	Raya Alamata	Climate Induced	514	1,859	5	+57.19%	327	1,168	5
Southern	Raya Alamata	Conflict	479	1,577	4	+11.66%	429	1,425	4
Southern	Raya Azebo	Conflict	2,045	5,780	15	-11.47%	2,310	4,980	15
Southern Total			4,925	13,179	38	+5.46%	4,670	10,925	35
Western	Kafta Humera	Conflict	451	831	4	+24.24%	363	501	4
Western	Setit Humera	Conflict	725	1,127	1	+53.60%	472	692	1
Western Total			1,176	1,958	5	+40.84%	835	1,193	5
Climate Induced Sum			514	1,859	5	+57.19%	327	1,168	5
Conflict Induced Sum			37,779	81,109	157	+14.06%	33,121	70,945	144
Grand Total			38,293	82,968	162	+14.49%	33,448	72,113	149



DISPLACEMENT TRACKING MATRIX (DTM) TIGRAY REGION, ETHIOPIA ROUND 15: JANUARY - FEBRUARY 2019

ABOUT DTM

DTM GLOBAL

The Displacement Tracking Matrix (DTM) is a system to track and monitor displacement and population mobility. It is designed to regularly and systematically capture, process and disseminate information to provide a better understanding of the movements and evolving needs of displaced populations, whether on site or en route. More information is available at www.globaldtm.info.

DTM IN ETHIOPIA

In Ethiopia, data is collected at zone, woreda and site level. Since September 2016, fifteen rounds of assessments have been completed. The DTM programme is implemented in close collaboration with the National Disaster Risk Management Commission, regional, zonal and woreda counterparts and DTMs implementing partner, the Danish Refugee Council (DRC).

METHODOLOGY

IOM's DTM team composed of enumerators from IOM and DRC were deployed across the country to collect the data. The process involved the following steps:

Zone level: Interviews with key informants from

the Disaster Prevention and Preparedness Office (DPPO), community representatives, and the education and health offices collect information including (among others) estimated caseload of displaced population, identification of woredas within the zone that host displaced populations, reason for displacement, time of arrival of IDPs and location of origin.

Woreda level: Information is collected from key woreda informants and includes (among others) estimated length of stay, number of displaced households and individuals at woreda level, displaced population by type of temporary settlements and approximate locations of identifiable displacement sites. The information is used to plan site assessments.

Site assessments: In-depth IDP site assessments capture detailed information through key informant interviews, direct observation and focus group discussions with male, female, elderly, children and IDP representatives. Data on available services by sector, accessibility constraints, exact type, location and name of the site, place of origin of IDPs, estimated size and type of the site and most common type of shelter are captured. Age and gender disaggregation for the site is extrapolated using a demographic calculator

tool based on the age range and sex of the household members of 20 randomly selected households from the site.

For more information please visit our website, www.displacement.iom.int, or contact us at dtmethiopia@iom.int



Humanitarian Aid
and Civil Protection





International Organization for Migration (IOM)
The UN Migration Agency

ANNEX I : INTERNAL DISPLACEMENTS IN TIGRAY REGION AS OF FEBRUARY 2019

Zone	Woreda	Sex	Age Groups					Total	HHs	Site Open Date	Cause	Duration
			Infants (0-4 y)	Children (5-14 y)	Youth (15-17 y)	Adults (18-59 y)	Elderly (60 +y)					
Central	Abiyadi	Female	32	53	29	273	4	391	505	06-Sep-16	Conflict	Before 2018
Central	Abiyadi	Male	51	62	45	446	9	613				
Central	Adwa	Female	77	101	39	1268	17	1502	2260	16-Aug-16	Conflict	Before 2018
Central	Adwa	Male	53	69	44	1569	35	1770				
Central	Ahferom	Female	412	561	402	545	234	2154	611	06-Apr-15	Conflict	Before 2018
Central	Ahferom	Male	329	359	288	387	186	1549				
Central	Ahferom	Female	3	4	1	9	0	17	21	16-Apr-15	Conflict	Before 2018
Central	Ahferom	Male	2	3	2	15	1	23				
Central	Ahferom	Female	6	19	3	34	0	62	69	16-Aug-16	Conflict	Before 2018
Central	Ahferom	Male	7	21	4	50	5	87				
Central	Ahferom	Female	38	40	17	195	6	296	376	24-Aug-16	Conflict	Before 2018
Central	Ahferom	Male	49	29	21	251	6	356				
Central	Ahferom	Female	1	5	4	16	1	27	40	28-Aug-18	Conflict	During 2018
Central	Ahferom	Male	1	8	3	27	2	41				
Central	Ahferom	Female	11	3	3	17	0	34	26	14-Nov-18	Conflict	During 2018
Central	Ahferom	Male	7	5	5	21	1	39				
Central	Ahferom	Female	6	5	1	12	0	24	43	15-Nov-18	Conflict	During 2018
Central	Ahferom	Male	2	4	2	31	0	39				
Central	Ahferom	Female	2	2	0	10	1	15	21	16-Nov-18	Conflict	During 2018
Central	Ahferom	Male	1	1	1	17	1	21				
Central	Ahferom	Female	2	1	3	9	1	16	25	26-Nov-18	Conflict	During 2018
Central	Ahferom	Male	2	2	2	17	1	24				
Central	Axum	Female	174	209	44	484	6	917	1021	20-Aug-16	Conflict	Before 2018
Central	Axum	Male	188	228	49	859	10	1334				
Central	Kola Temben	Female	12	8	14	48	2	84	107	26-Aug-16	Conflict	Before 2018
Central	Kola Temben	Male	13	7	15	89	2	126				
Central	Laelay Maychew	Female	18	5	5	23	1	52	54	27-Nov-18	Conflict	During 2018
Central	Laelay Maychew	Male	10	9	5	39	3	66				
Central	Mereb Leke	Female	143	276	222	567	47	1255	587	23-Apr-15	Conflict	Before 2018
Central	Mereb Leke	Male	155	318	213	599	77	1362				
Central	Mereb Leke	Female	18	21	16	109	2	166	212	24-Aug-16	Conflict	Before 2018
Central	Mereb Leke	Male	31	22	13	173	5	244				
Central	Mereb Leke	Female	1	2	0	11	0	14	20	12-Dec-18	Conflict	During 2018
Central	Mereb Leke	Male	0	1	3	15	1	20				
Central	Naeder Adet	Female	20	35	33	69	1	158	87	20-Aug-16	Conflict	Before 2018
Central	Naeder Adet	Male	15	15	22	81	1	134				
Central	Tahtay Maychew	Female	7	10	5	93	0	115	252	20-Aug-16	Conflict	Before 2018
Central	Tahtay Maychew	Male	7	13	6	170	1	197				



International Organization for Migration (IOM)
The UN Migration Agency

ANNEX I : INTERNAL DISPLACEMENTS IN TIGRAY REGION AS OF FEBRUARY 2019

Zone	Woreda	Sex	Age Groups					Total	HHs	Site Open Date	Cause	Duration
			Infants (0-4 y)	Children (5-14 y)	Youth (15-17 y)	Adults (18-59 y)	Elderly (60 +y)					
Central	Tanqua Abergele	Female	7	6	8	36	1	58	91	25-Aug-16	Conflict	Before 2018
Central	Tanqua Abergele	Male	11	8	6	52	1	78				
Central	Werei Leke	Female	37	56	60	249	7	409	688	24-Aug-16	Conflict	Before 2018
Central	Werei Leke	Male	58	71	48	444	7	628				
Central Total			2,019	2,677	1,706	9,429	686	16,517	7,116			
Eastern	Adigrat Town	Female	82	117	95	579	8	881	1464	17-Jul-16	Conflict	Before 2018
Eastern	Adigrat Town	Male	95	109	91	1065	10	1370				
Eastern	Atsbi Wenberta	Female	18	11	12	79	4	124	154	20-Jul-16	Conflict	Before 2018
Eastern	Atsbi Wenberta	Male	26	22	9	114	7	178				
Eastern	Erob	Female	3	18	8	47	3	79	30	21-Sep-17	Conflict	Before 2018
Eastern	Erob	Male	1	17	9	28	4	59				
Eastern	Ganta Afeshum	Female	41	55	50	254	3	403	813	23-Aug-16	Conflict	Before 2018
Eastern	Ganta Afeshum	Male	48	85	67	600	9	809				
Eastern	Ganta Afeshum	Female	4	5	4	50	0	63	178	25-Feb-18	Conflict	During 2018
Eastern	Ganta Afeshum	Male	3	12	6	141	1	163				
Eastern	Ganta Afeshum	Female	4	5	4	26	1	40	57	03-Nov-18	Conflict	During 2018
Eastern	Ganta Afeshum	Male	8	6	6	45	2	67				
Eastern	Ganta Afeshum	Female	23	12	7	81	2	125	228	17-Nov-18	Conflict	During 2018
Eastern	Ganta Afeshum	Male	27	18	18	158	3	224				
Eastern	Gulomekeda	Female	36	73	52	96	33	290	126	15-Feb-15	Conflict	Before 2018
Eastern	Gulomekeda	Male	22	64	48	82	38	254				
Eastern	Gulomekeda	Female	118	105	28	481	5	737	876	15-Sep-18	Conflict	During 2018
Eastern	Gulomekeda	Male	139	120	34	832	12	1137				
Eastern	Gulomekeda	Female	15	13	10	84	0	122	164	25-Sep-18	Conflict	During 2018
Eastern	Gulomekeda	Male	11	14	9	149	1	184				
Eastern	Gulomekeda	Female	18	12	1	62	1	94	123	25-Oct-18	Conflict	During 2018
Eastern	Gulomekeda	Male	19	15	3	109	1	147				
Eastern	Hawzen	Female	106	79	59	816	3	1063	1460	28-Aug-16	Conflict	Before 2018
Eastern	Hawzen	Male	78	63	66	1361	9	1577				
Eastern	Hawzen	Female	3	3	2	16	0	24	106	25-Feb-18	Conflict	During 2018
Eastern	Hawzen	Male	6	4	1	89	0	100				
Eastern	Hawzen	Female	1	1	1	6	0	9	20	20-Sep-18	Conflict	During 2018
Eastern	Hawzen	Male	2	5	0	15	0	22				
Eastern	Hawzen	Female	9	6	4	79	0	98	292	25-Sep-18	Conflict	During 2018
Eastern	Hawzen	Male	17	22	9	279	0	327				
Eastern	Kelete Awelallo	Female	10	24	6	62	4	106	119	20-Jul-16	Conflict	Before 2018
Eastern	Kelete Awelallo	Male	16	42	10	78	5	151				
Eastern	Kelete Awelallo	Female	23	29	14	151	10	227	331	27-Sep-18	Conflict	During 2018
Eastern	Kelete Awelallo	Male	23	38	12	220	11	304				
Eastern	Saesie Tsaedaemba	Female	20	12	3	97	4	136	451	06-Sep-16	Conflict	Before 2018
Eastern	Saesie Tsaedaemba	Male	16	22	3	359	7	407				



International Organization for Migration (IOM)
The UN Migration Agency

ANNEX I : INTERNAL DISPLACEMENTS IN TIGRAY REGION AS OF FEBRUARY 2019

Zone	Woreda	Sex	Age Groups					Total	HHs	Site Open Date	Cause	Duration
			Infants (0-4 y)	Children (5-14 y)	Youth (15-17 y)	Adults (18-59 y)	Elderly (60 +y)					
Eastern	Saesie Tsaedaemba	Female	15	28	13	172	3	231	565	26-Sep-18	Conflict	During 2018
Eastern	Saesie Tsaedaemba	Male	24	23	7	452	8	514				
Eastern	Saesie Tsaedaemba	Female	0	0	0	7	0	7	24	10-Nov-18	Conflict	During 2018
Eastern	Saesie Tsaedaemba	Male	1	2	0	15	4	22				
Eastern	Wukro Town	Female	100	128	27	394	13	662	928	20-Jul-16	Conflict	Before 2018
Eastern	Wukro Town	Male	102	152	21	714	14	1003				
Eastern Total			1,333	1,591	829	10,544	243	14,540	8,509			
Mekelle	Adihaki Sub City	Female	182	384	191	699	14	1470	1404	27-Aug-16	Conflict	Before 2018
Mekelle	Adihaki Sub City	Male	163	415	226	853	28	1685				
Mekelle	Ayder Sub City	Female	192	109	59	672	12	1044	1372	02-Sep-16	Conflict	Before 2018
Mekelle	Ayder Sub City	Male	207	97	44	967	22	1337				
Mekelle	Hadnet Sub City	Female	492	321	196	1431	13	2453	2234	03-Aug-16	Conflict	Before 2018
Mekelle	Hadnet Sub City	Male	512	285	183	2146	38	3164				
Mekelle	Hawelti Sub City	Female	215	235	377	1389	27	2243	2316	07-Jul-16	Conflict	Before 2018
Mekelle	Hawelti Sub City	Male	192	244	335	2266	45	3082				
Mekelle	Kedamay Weyane Sub City	Female	206	235	137	381	16	975	1048	29-Aug-16	Conflict	Before 2018
Mekelle	Kedamay Weyane Sub City	Male	184	217	141	648	22	1212				
Mekelle	Quiha Subcity	Female	60	82	56	343	6	547	510	05-Sep-16	Conflict	Before 2018
Mekelle	Quiha Subcity	Male	75	74	39	513	9	710				
Mekelle	Semen Sub City	Female	254	420	468	1529	21	2692	2242	02-Aug-16	Conflict	Before 2018
Mekelle	Semen Sub City	Male	274	373	340	2496	38	3521				
Mekelle Total			3,208	3,491	2,792	16,333	311	26,135	11,126			
North Western	Asgede Tsimbila	Female	44	30	68	111	4	257	213	18-Aug-16	Conflict	Before 2018
North Western	Asgede Tsimbila	Male	35	47	69	137	8	296				
North Western	Laelay Adiyabo	Female	18	22	8	91	1	140	201	07-Aug-16	Conflict	Before 2018
North Western	Laelay Adiyabo	Male	24	27	11	111	3	176				
North Western	Laelay Adiyabo	Female	2	3	9	22	0	36	59	08-Sep-18	Conflict	During 2018
North Western	Laelay Adiyabo	Male	1	3	6	50	2	62				
North Western	Medebay Zana	Female	5	6	4	28	2	45	107	08-Aug-16	Conflict	Before 2018
North Western	Medebay Zana	Male	4	5	3	85	4	101				
North Western	Sheraro Town	Female	12	26	18	95	1	152	207	08-Aug-16	Conflict	Before 2018
North Western	Sheraro Town	Male	19	24	21	116	3	183				
North Western	Shire Endaselasie	Female	348	504	305	1292	13	2462	2862	03-Aug-16	Conflict	Before 2018
North Western	Shire Endaselasie	Male	185	423	213	2565	29	3415				
North Western	Tahtay Koraro	Female	2	3	9	16	0	30	28	11-Sep-16	Conflict	Before 2018
North Western	Tahtay Koraro	Male	1	3	6	20	2	32				
North Western	Tselemti	Female	58	34	41	340	11	484	700	14-Aug-16	Conflict	Before 2018
North Western	Tselemti	Male	67	45	54	477	20	663				
North Western Total			825	1,205	845	5,556	103	8,534	4,377			
South East	Degua Temben	Female	4	10	16	18	0	48	77	15-Aug-16	Conflict	Before 2018
South East	Degua Temben	Male	12	15	14	28	4	73				
South East	Enderta	Female	4	9	2	23	1	39	28	15-Mar-18	Conflict	During 2018
South East	Enderta	Male	3	6	3	45	2	59				



International Organization for Migration (IOM)
The UN Migration Agency

ANNEX I : INTERNAL DISPLACEMENTS IN TIGRAY REGION AS OF FEBRUARY 2019

Zone	Woreda	Sex	Age Groups					Total	HHs	Site Open Date	Cause	Duration
			Infants (0-4 y)	Children (5-14 y)	Youth (15-17 y)	Adults (18-59 y)	Elderly (60 +y)					
South East	Enderta	Female	7	11	2	32	1	53	32	20-Mar-18	Conflict	During 2018
South East	Enderta	Male	4	8	3	41	1	57				
South East	Enderta	Female	4	6	6	11	1	28	24	10-Nov-18	Conflict	During 2018
South East	Enderta	Male	5	6	8	16	3	38				
South East	Hintalo Wejirat	Female	28	70	9	191	6	304	397	08-Aug-16	Conflict	Before 2018
South East	Hintalo Wejirat	Male	65	75	15	262	18	435				
South East	Hintalo Wejirat	Female	4	6	2	25	0	37	44	19-Mar-18	Conflict	During 2018
South East	Hintalo Wejirat	Male	3	13	5	36	3	60				
South East	Hintalo Wejirat	Female	4	10	7	21	3	45	59	18-Sep-18	Conflict	During 2018
South East	Hintalo Wejirat	Male	7	18	11	41	4	81				
South East	Hintalo Wejirat	Female	17	36	7	80	4	144	180	22-Oct-18	Conflict	During 2018
South East	Hintalo Wejirat	Male	19	35	14	107	13	188				
South East	Hintalo Wejirat	Female	4	2	3	17	2	28	34	15-Dec-18	Conflict	During 2018
South East	Hintalo Wejirat	Male	8	1	2	24	4	39				
South East	Hintalo Wejirat	Female	2	4	3	20	2	31	42	18-Dec-18	Conflict	During 2018
South East	Hintalo Wejirat	Male	4	3	6	36	2	51				
South East	Hintalo Wejirat	Female	2	6	6	13	1	28	39	22-Dec-18	Conflict	During 2018
South East	Hintalo Wejirat	Male	4	9	3	21	3	40				
South East	Saharti Samre	Female	1	4	4	15	0	24	29	25-Oct-17	Conflict	Before 2018
South East	Saharti Samre	Male	0	2	7	31	0	40				
South East	Saharti Samre	Female	0	1	3	9	0	13	25	28-Oct-17	Conflict	Before 2018
South East	Saharti Samre	Male	1	2	4	19	0	26				
South East	Saharti Samre	Female	5	9	3	24	1	42	54	22-Oct-18	Conflict	During 2018
South East	Saharti Samre	Male	7	9	1	34	3	54				
South East Total			228	386	169	1,240	82	2,105	1,064			
Southern	Alamata	Female	60	305	34	197	24	620	548	17-Aug-16	Conflict	Before 2018
Southern	Alamata	Male	67	317	58	295	28	765				
Southern	Endamehoni	Female	5	9	10	24	1	49	32	19-Feb-18	Conflict	During 2018
Southern	Endamehoni	Male	6	6	5	27	4	48				
Southern	Endamehoni	Female	5	9	6	22	1	43	34	20-Mar-18	Conflict	During 2018
Southern	Endamehoni	Male	4	13	5	48	2	72				
Southern	Endamehoni	Female	2	3	4	19	3	31	30	15-Apr-18	Conflict	During 2018
Southern	Endamehoni	Male	5	5	3	29	3	45				
Southern	Endamehoni	Female	5	6	2	26	1	40	33	10-Jul-18	Conflict	During 2018
Southern	Endamehoni	Male	9	12	5	28	8	62				
Southern	Endamehoni	Female	5	5	9	12	3	34	34	03-Sep-18	Conflict	During 2018
Southern	Endamehoni	Male	4	8	8	28	3	51				
Southern	Endamehoni	Female	4	7	9	24	2	46	24	14-Dec-18	Conflict	During 2018
Southern	Endamehoni	Male	5	6	7	27	5	50				
Southern	Imba Alaje	Female	7	15	10	50	4	86	131	03-Sep-18	Conflict	During 2018
Southern	Imba Alaje	Male	13	20	4	80	7	124				



International Organization for Migration (IOM)
The UN Migration Agency

ANNEX I : INTERNAL DISPLACEMENTS IN TIGRAY REGION AS OF FEBRUARY 2019

Zone	Woreda	Sex	Age Groups					Total	HHs	Site Open Date	Cause	Duration
			Infants (0-4 y)	Children (5-14 y)	Youth (15-17 y)	Adults (18-59 y)	Elderly (60 +y)					
Southern	Imba Alaje	Female	3	6	6	23	1	39				
Southern	Imba Alaje	Male	7	8	3	35	3	56	51	20-Dec-18	Conflict	During 2018
Southern	Korem Town	Female	18	33	56	174	2	283				
Southern	Korem Town	Male	49	59	45	339	5	497	409	30-Aug-16	Conflict	Before 2018
Southern	Maychew	Female	29	24	69	211	7	340				
Southern	Maychew	Male	43	68	61	257	11	440	457	16-Jul-16	Conflict	Before 2018
Southern	Ofla	Female	5	3	4	21	0	33				
Southern	Ofla	Male	9	5	2	33	2	51	67	05-Sep-18	Conflict	During 2018
Southern	Ofla	Female	1	2	2	12	2	19				
Southern	Ofla	Male	3	4	2	26	4	39	37	18-Dec-18	Conflict	During 2018
Southern	Raya Alamata	Female	54	34	17	27	6	138				
Southern	Raya Alamata	Male	58	31	22	29	8	148	82	20-May-16	Seasonal Flood	Before 2018
Southern	Raya Alamata	Female	80	42	20	27	6	175				
Southern	Raya Alamata	Male	75	40	23	34	7	179	105	23-Jul-16	Seasonal Flood	Before 2018
Southern	Raya Alamata	Female	93	55	34	48	14	244				
Southern	Raya Alamata	Male	98	66	35	60	19	278	173	15-Aug-17	Seasonal Flood	Before 2018
Southern	Raya Alamata	Female	125	88	76	65	9	363				
Southern	Raya Alamata	Male	113	80	51	78	12	334	154	16-Aug-17	Seasonal Flood	Before 2018
Southern	Raya Alamata	Female	13	36	13	92	5	159				
Southern	Raya Alamata	Male	28	58	20	112	16	234	96	16-Oct-17	Conflict	Before 2018
Southern	Raya Alamata	Female	32	85	24	202	12	355				
Southern	Raya Alamata	Male	53	87	38	246	22	446	261	17-Oct-17	Conflict	Before 2018
Southern	Raya Alamata	Female	6	13	4	22	3	48				
Southern	Raya Alamata	Male	9	38	7	38	5	97	47	22-Jan-18	Conflict	During 2018
Southern	Raya Alamata	Female	6	40	8	35	7	96				
Southern	Raya Alamata	Male	18	43	10	59	12	142	75	10-Mar-18	Conflict	During 2018
Southern	Raya Azebo	Female	72	71	189	398	6	736				
Southern	Raya Azebo	Male	77	92	173	451	15	808	546	24-Aug-16	Conflict	Before 2018
Southern	Raya Azebo	Female	14	22	27	81	3	147				
Southern	Raya Azebo	Male	28	32	34	121	6	221	117	16-Feb-18	Conflict	During 2018
Southern	Raya Azebo	Female	49	48	117	217	8	439				
Southern	Raya Azebo	Male	59	79	108	325	13	584	388	13-Mar-18	Conflict	During 2018
Southern	Raya Azebo	Female	19	37	36	108	7	207				
Southern	Raya Azebo	Male	28	45	44	151	12	280	166	16-Mar-18	Conflict	During 2018
Southern	Raya Azebo	Female	6	12	9	32	2	61				
Southern	Raya Azebo	Male	9	19	11	53	5	97	48	03-Sep-18	Conflict	During 2018
Southern	Raya Azebo	Female	10	23	21	69	4	127				
Southern	Raya Azebo	Male	16	22	18	87	9	152	86	05-Sep-18	Conflict	During 2018
Southern	Raya Azebo	Female	9	15	7	25	0	56				
Southern	Raya Azebo	Male	9	8	9	36	1	63	44	06-Sep-18	Conflict	During 2018
Southern	Raya Azebo	Female	54	38	54	178	5	329				
Southern	Raya Azebo	Male	62	89	61	265	14	491	309	07-Sep-18	Conflict	During 2018
Southern	Raya Azebo	Female	41	49	94	213	7	404				
Southern	Raya Azebo	Male	57	120	74	308	19	578	341	08-Sep-18	Conflict	During 2018
Southern Total			1,853	2,615	1,917	6,359	435	13,179	4,925			



International Organization for Migration (IOM)
The UN Migration Agency

ANNEX I : INTERNAL DISPLACEMENTS IN TIGRAY REGION AS OF FEBRUARY 2019

Zone	Woreda	Sex	Age Groups					Total	HHs	Site Open Date	Cause	Duration
			Infants (0-4 y)	Children (5-14 y)	Youth (15-17 y)	Adults (18-59 y)	Elderly (60 +y)					
Western	Kafta Humera	Female	9	9	6	30	0	54	58	03-Aug-16	Conflict	Before 2018
Western	Kafta Humera	Male	8	11	7	36	2	64				
Western	Kafta Humera	Female	46	39	41	97	4	227	284	08-Aug-16	Conflict	Before 2018
Western	Kafta Humera	Male	32	24	29	164	6	255				
Western	Kafta Humera	Female	6	14	12	19	2	53	56	19-Aug-16	Conflict	Before 2018
Western	Kafta Humera	Male	8	12	14	26	3	63				
Western	Kafta Humera	Female	13	14	3	25	2	57	53	25-Aug-16	Conflict	Before 2018
Western	Kafta Humera	Male	7	10	8	28	5	58				
Western	Setit Humera	Female	64	73	61	218	7	423	725	20-Jul-16	Conflict	Before 2018
Western	Setit Humera	Male	57	67	51	517	12	704				
Western Total			250	273	232	1,160	43	1,958	1,176			
Grand Total			9,716	12,238	8,490	50,621	1,903	82,968	38,293			

Disclaimer: Age and gender disaggregation for the site is extrapolated using a demographic calculator tool based on the age range and sex of the household members of 20 randomly selected households from the site.

Displacement Tracking Matrix (DTM) conducted in collaboration with Danish Refugee Council (DRC)



Humanitarian Aid
and Civil Protection



Schweizerische Eidgenossenschaft
Confédération suisse
Confederazione Svizzera
Confederaziun svizra
Swiss Agency for Development
and Cooperation SDC

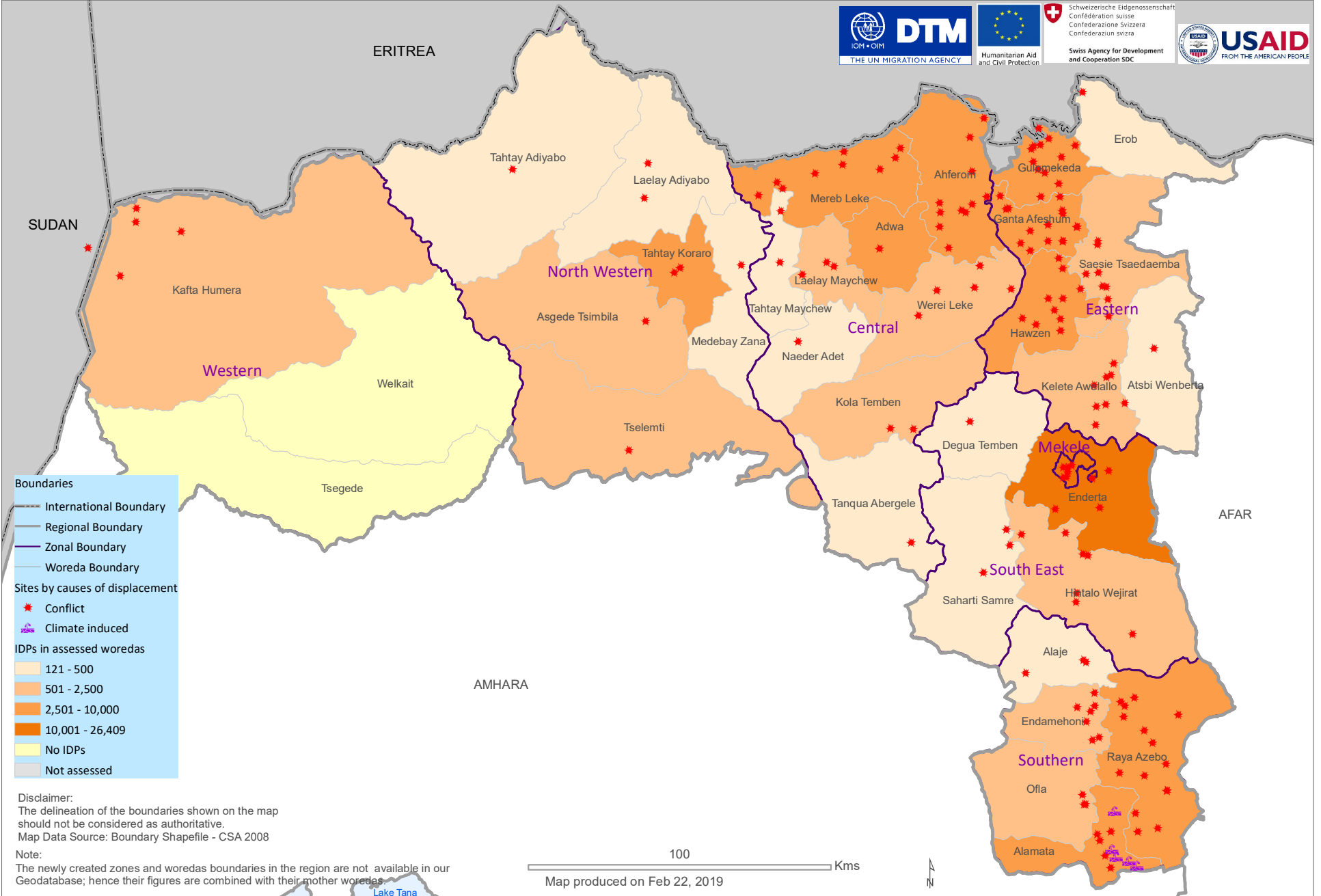


USAID
FROM THE AMERICAN PEOPLE

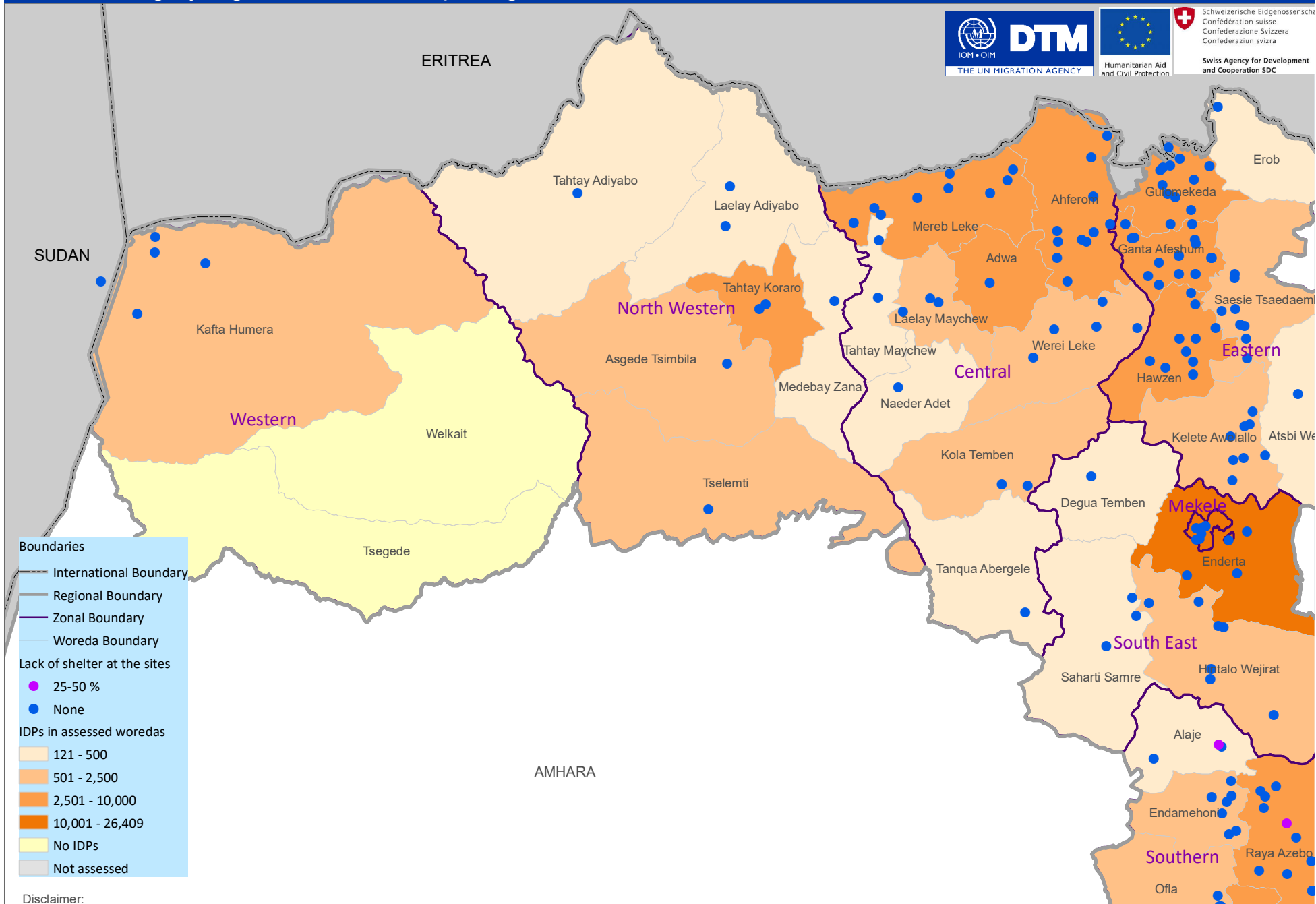
DTM made possible thanks to the European Civil Protection and Humanitarian Aid Operations (ECHO), the Ethiopian Humanitarian Fund (EHF), the Office of United States Foreign Disaster Assistance (OFDA) and the Swiss agency for Development and Cooperation (SDC).

The opinions expressed in this report are those of the authors and do not necessarily reflect the views of the Office of United States Foreign Disaster Assistance.

Annex II - Tigray region displacement causes and IDPs in assessed woredas DTM round fifteen (01/01 - 31/01, 2019)

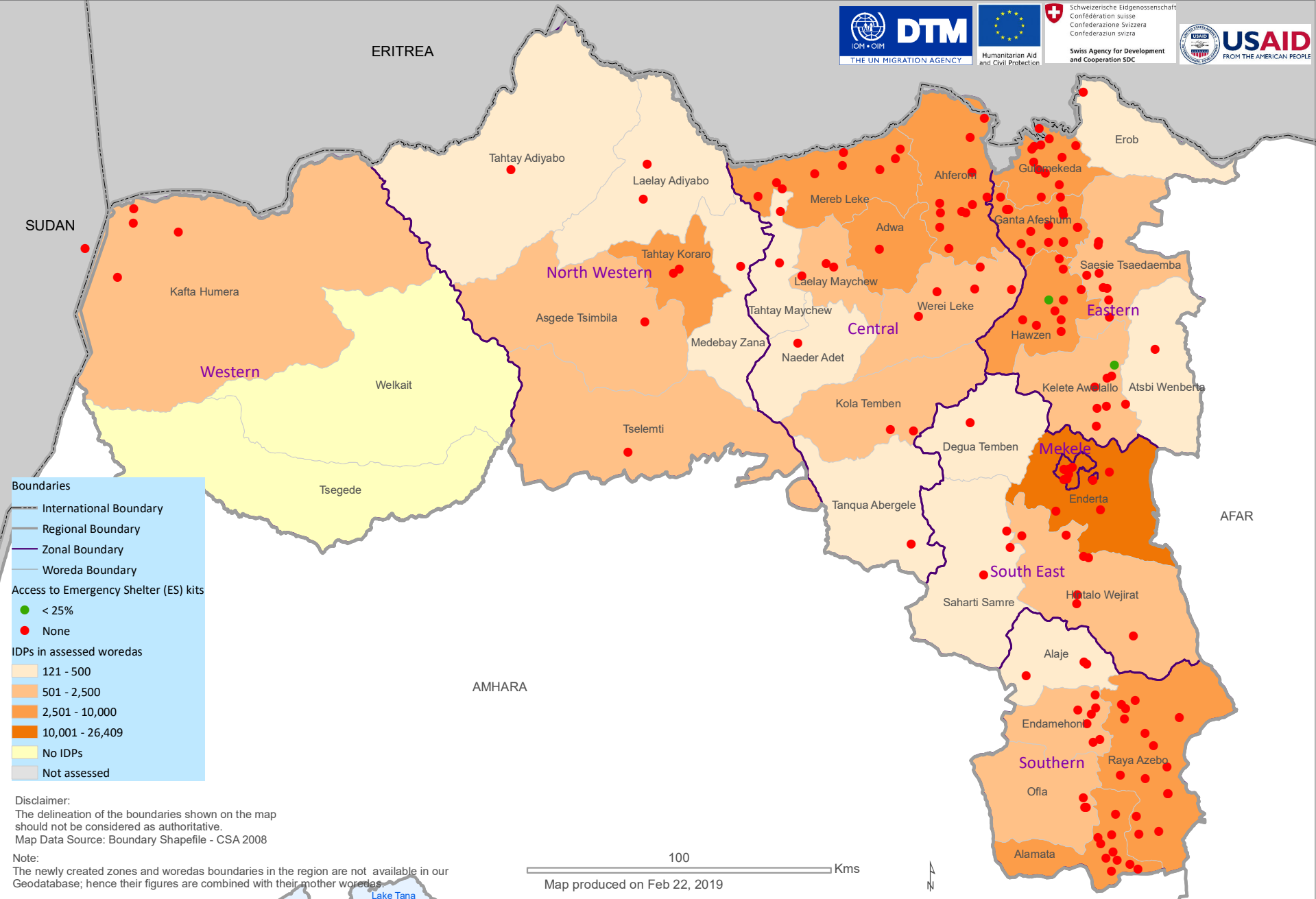


Annex III - Tigray region households reporting lack of shelter at the sites and IDPs in assessed woredas DTM round fifteen



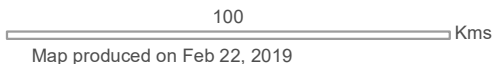
Disclaimer:

Annex IV - Tigray region households reporting access to ES kits and IDPs in assessed woredas DTM round fifteen (01/01 - 31/01, 2019)

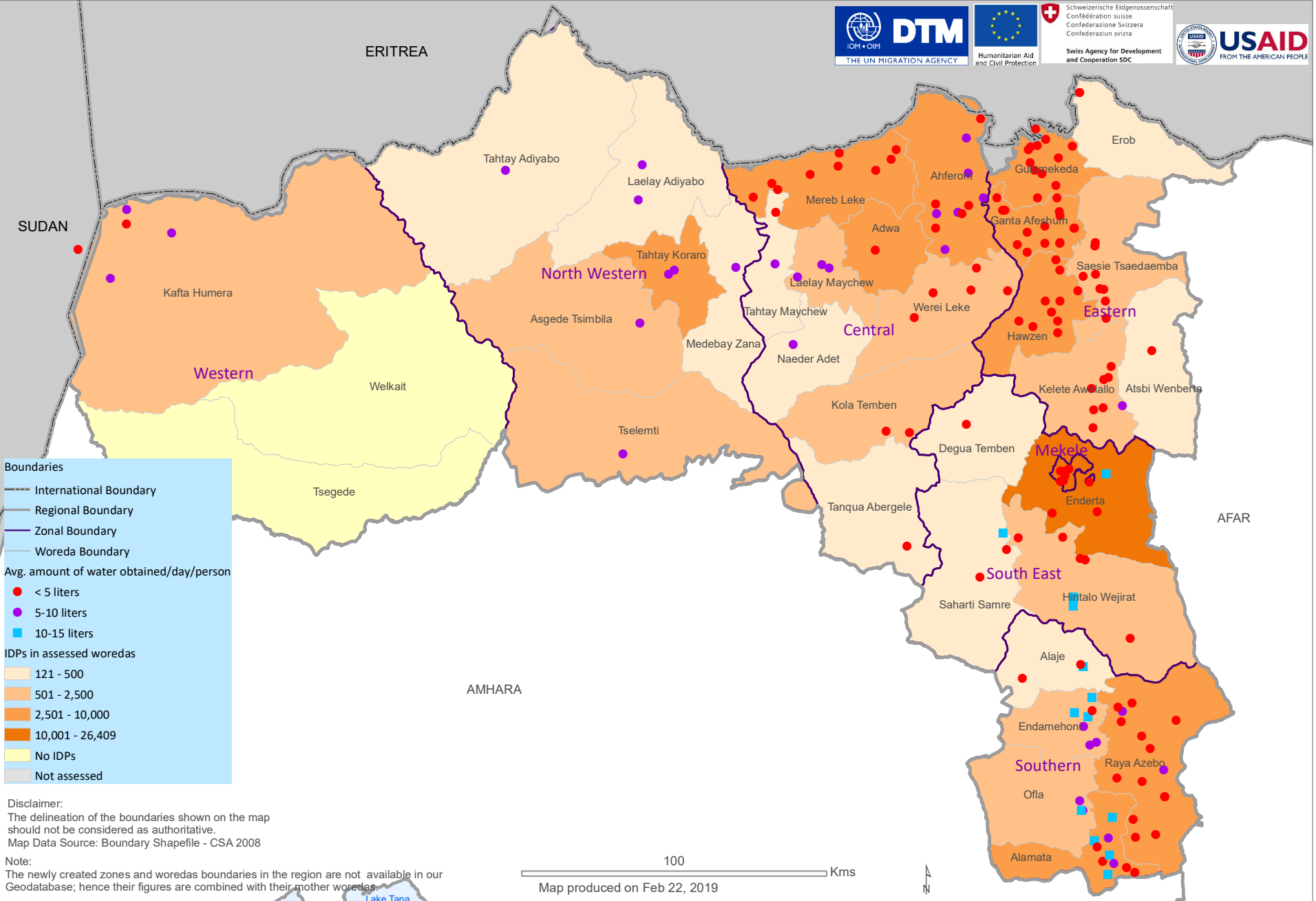


Disclaimer:
The delineation of the boundaries shown on the map should not be considered as authoritative.
Map Data Source: Boundary Shapefile - CSA 2008

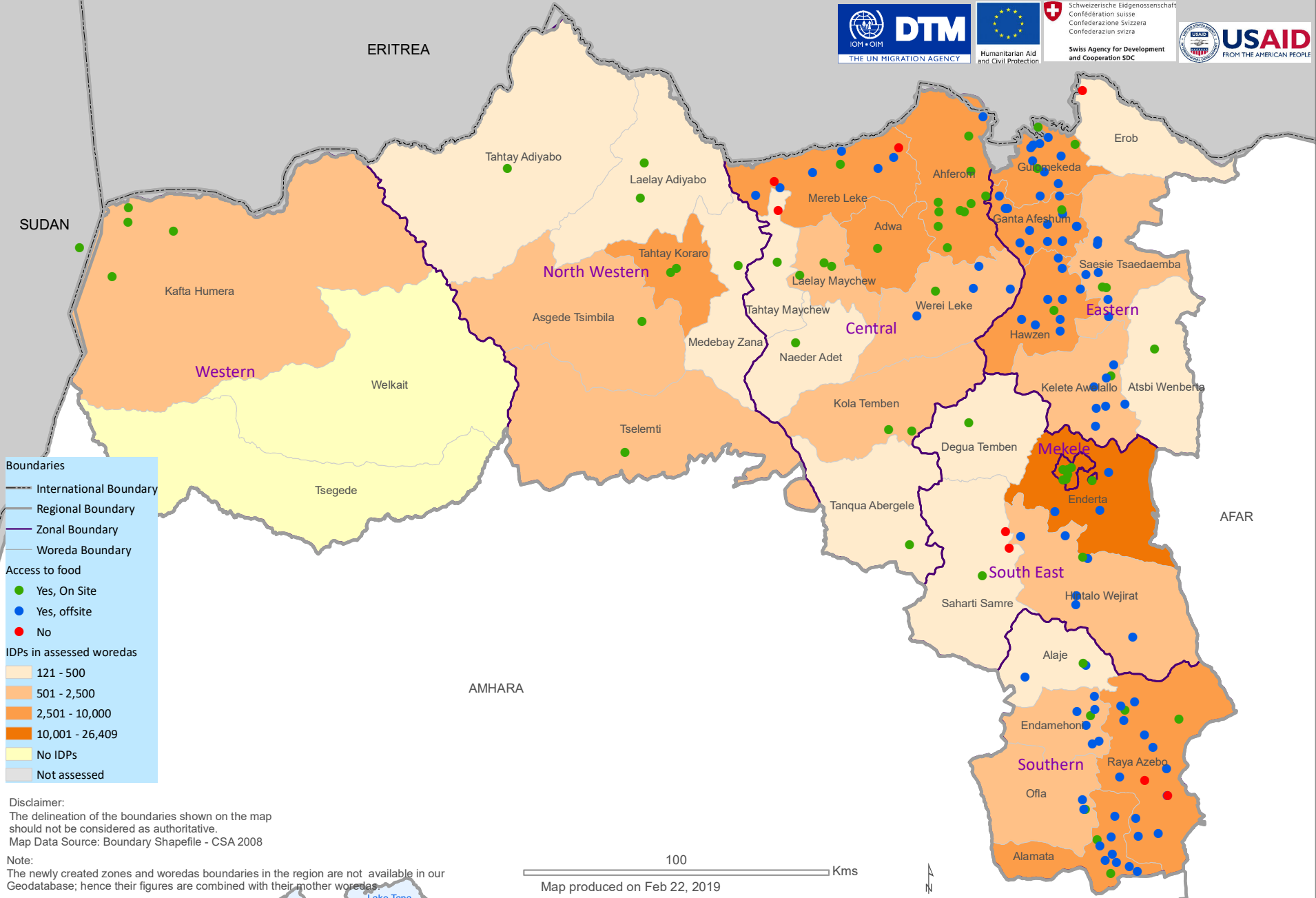
Note:
The newly created zones and woredas boundaries in the region are not available in our Geodatabase; hence their figures are combined with their mother woredas.



Annex V - Tigray region sites reporting access to water and IDPs in assessed woredas DTM round fifteen (01/01 - 31/01, 2019)



Annex VI - Tigray region sites reporting access to food and IDPs in assessed woredas DTM round fifteen (01/01 - 31/01, 2019)

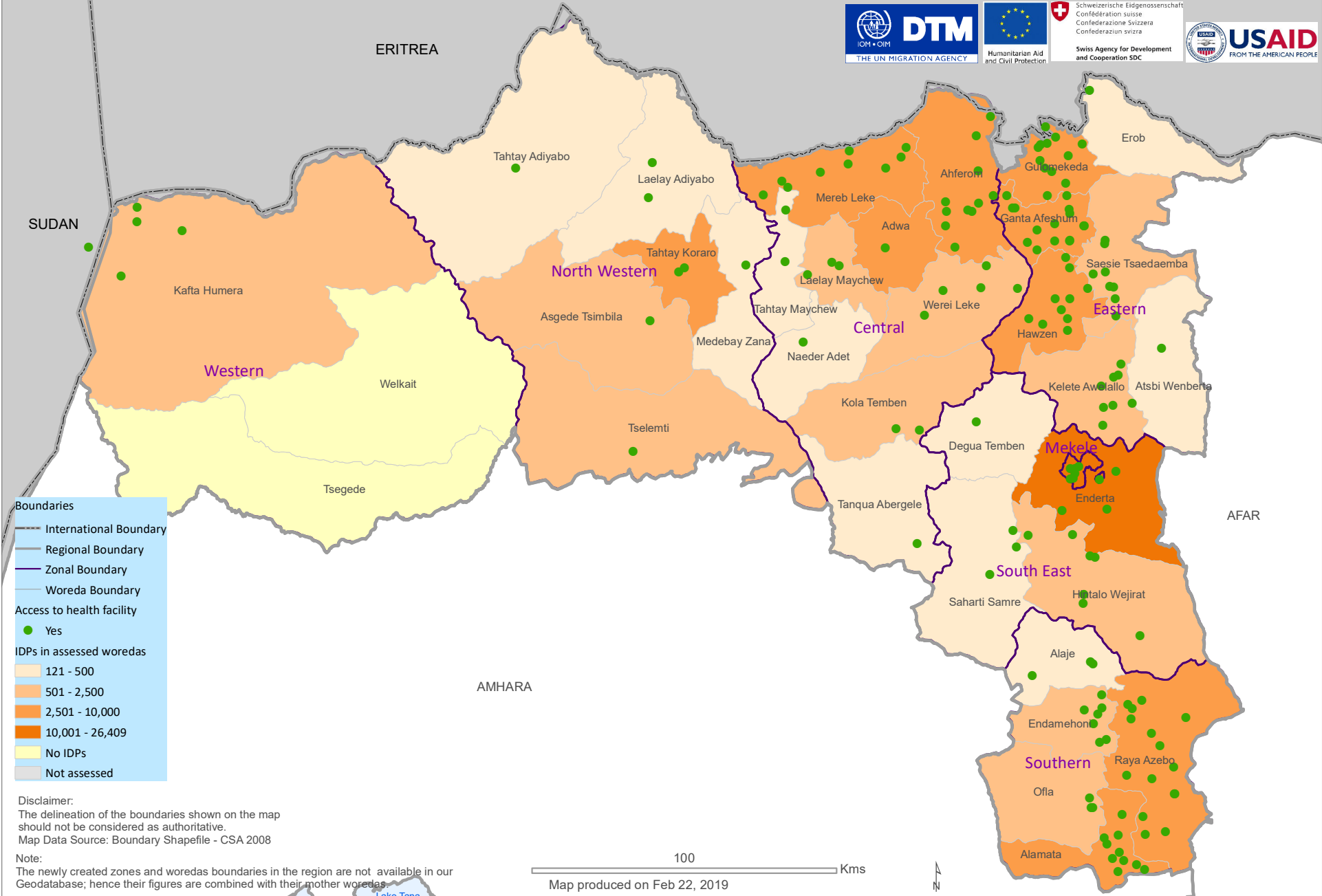


Disclaimer:
The delineation of the boundaries shown on the map should not be considered as authoritative.
Map Data Source: Boundary Shapefile - CSA 2008

Note:
The newly created zones and woredas boundaries in the region are not available in our Geodatabase; hence their figures are combined with their mother woredas.

100 Kms
Map produced on Feb 22, 2019

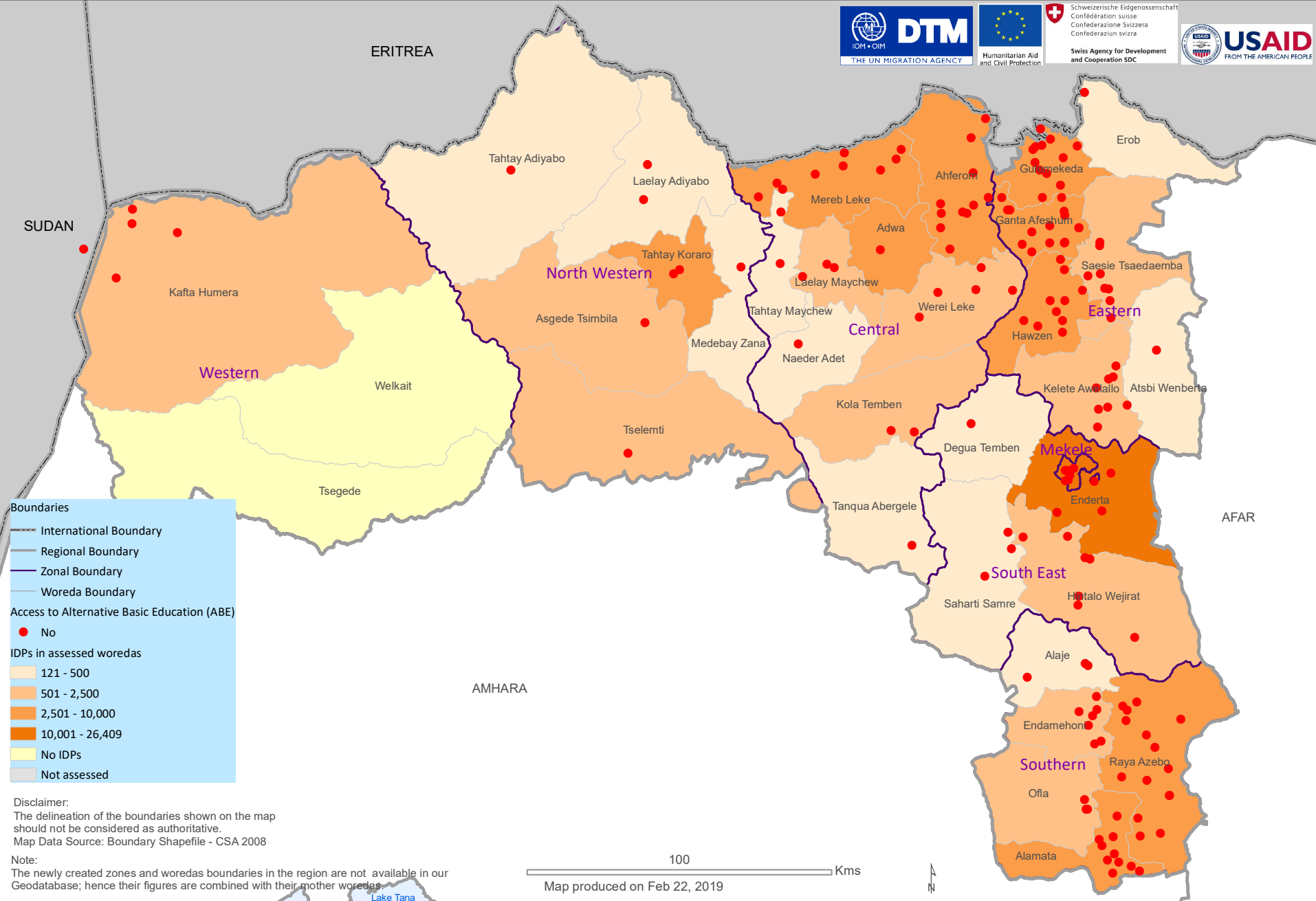
Annex VII - Tigray region sites reporting access to health facility and IDPs in assessed woredas DTM round fifteen (01/01 - 31/01, 2019)



Disclaimer:
The delineation of the boundaries shown on the map should not be considered as authoritative.
Map Data Source: Boundary Shapefile - CSA 2008

Note:
The newly created zones and woredas boundaries in the region are not available in our Geodatabase; hence their figures are combined with their mother woredas.

Annex VIII - Tigray region sites reporting access to ABE and IDPs in assessed woredas DTM round fifteen (01/01 - 31/01, 2019)



Disclaimer:
The delineation of the boundaries shown on the map should not be considered as authoritative.
Map Data Source: Boundary Shapefile - CSA 2008

Note:
The newly created zones and woredas boundaries in the region are not available in our Geodatabase; hence their figures are combined with their mother woredas.

Annex IX - Tigray region sites reporting access to Formal PES and IDPs in assessed woredas DTM round fifteen (01/01 - 31/01, 2019)

