



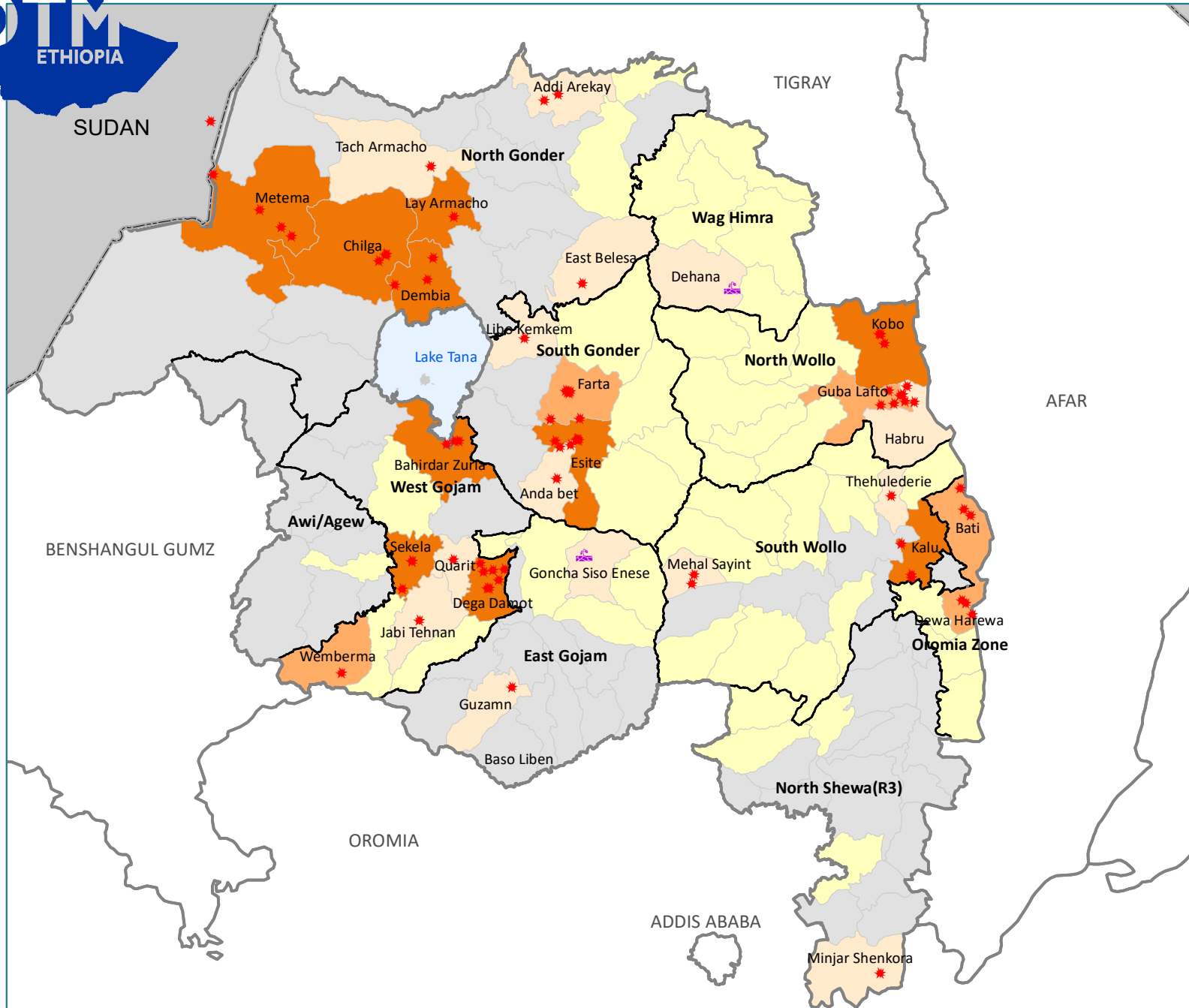
**DISPLACEMENT TRACKING MATRIX (DTM) AMHARA REGION, ETHIOPIA**  
*Summary of Key Findings*  
**ROUND 15: January/February 2019**  
**DATE OF PUBLICATION: 26 March 2019**



# DISPLACEMENT TRACKING MATRIX (DTM) AMHARA REGION, ETHIOPIA ROUND 15: JANUARY/FEBRUARY 2019



## OVERVIEW OF DISPLACEMENT AMHARA REGION DTM Round 15 FROM JANUARY 1 - 31, 2018



**Sites by causes of displacement**

- ★ Conflict
- ★ Climate induced

**IDPs in assessed woredas**

- 46 - 500
- 501 - 1,000
- 1,001 - 4,064
- No IDPs
- Not assessed

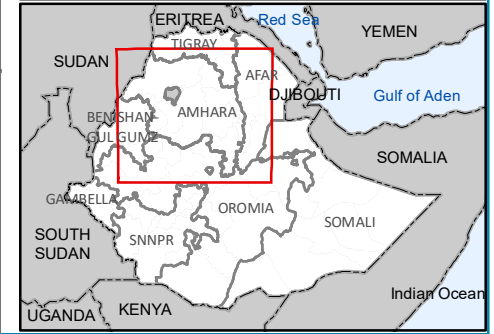
**Boundaries**

- International Boundary
- Regional Boundary
- Zonal Boundary
- Woreda Boundary

Scale: 0, 20, 40, 80, 120 Kilometers

Sources : IOM Map production date : 21 Feb 2019  
 This map is for illustration purposes only.  
 Names and boundaries on this map do not imply official endorsement or acceptance by IOM.  
 Map Data Source: Boundary shapefile - CSA 2008

[www.displacement.iom.int/ethiopia](http://www.displacement.iom.int/ethiopia)  
[dtmethiopia@iom.int](mailto:dtmethiopia@iom.int)



Note:  
 The newly created zones and woredas boundaries in this region are not available in our Geodatabase; hence their boundaries and figures are combined with their mother zones and woredas.



# DISPLACEMENT TRACKING MATRIX (DTM) AMHARA REGION, ETHIOPIA

## ROUND 15: JANUARY - FEBRUARY 2019

### AMHARA REGION - KEY FINDINGS

**LOCATION AND CAUSE OF DISPLACEMENT:** 23,676 displaced individuals comprising 7,158 households in 74 displacement sites were identified in Amhara region\*\*. These figures represent an increase of 10,157 individuals (+75.13%), an increase of 3,049 households (+74.20%), and an increase of 15 sites (+25.42%) since round 14 (November/December 2018). No site has opened since the start of 2019, but 43% sites opened before 2018 and 57% opened in 2018. Conflict was the primary cause of displacement for an estimated 99% of the displaced population.

**DEMOGRAPHICS:** 49% of displaced individuals were female and 51% were male. 45% were younger than 18 years old while 2% were over 60 years old.

**SHELTER:** 72 sites reported that over 25% of households were living in shelters that were below regional and cultural standards.

**WASH:** None of the sites meet SPHERE standards of access to over 15 liters of water per person per day. 36 displacement sites (49%) reported having no latrines.

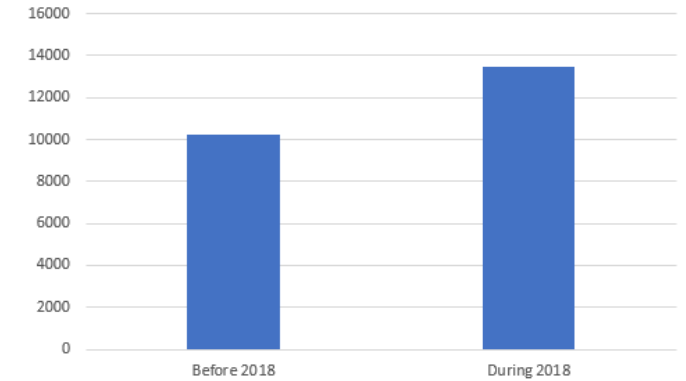
**FOOD, NUTRITION AND LIVELIHOODS:** 31 sites (42%), representing 7208 individuals, reported no access to food. 91% of sites reported that IDPs did not have access to income generating activities.

**HEALTH:** Malaria was the primary health concern in this round of data collection with 29 sites reporting this health concern.

**EDUCATION:** In 19% of sites, 50% or less of the children on site are attending formal primary school. Formal primary school education is available at 76% sites. Alternative basic education (ABE) is not available at any site.

**COMMUNICATION:** 35% of sites reported that local leaders were IDPs' primary source of information followed by families/friends at 34% of sites.

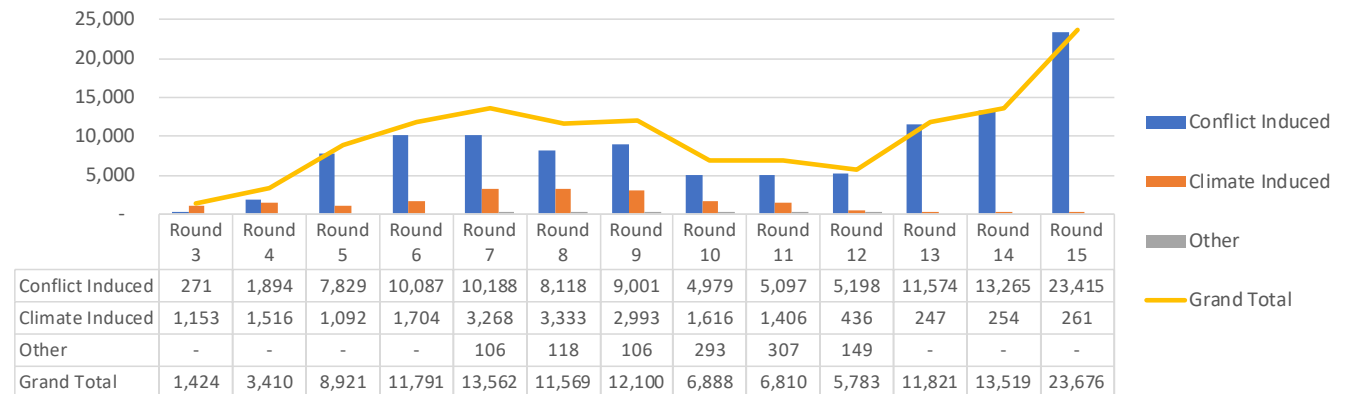
Figure 1 illustrates trends in stock totals of displacement in the region over time compared to recent displacement. Figure 2 shows IDP numbers disaggregated by cause over time.



**Figure 1: Trends in stock totals of displacement and new displacements before and during 2018**

\*All data, including graphs and maps presented in this report comprise data collected between 1 to 31 January 2019.

\*\*These figures do not include IDPs in sites inaccessible due to security reasons. However, DTM's tool for tracking spontaneous new displacements recorded 45,607 displaced individuals that were inaccessible during the time that data was collected for this round.



**Figure 2: IDPs by cause of displacement by round**

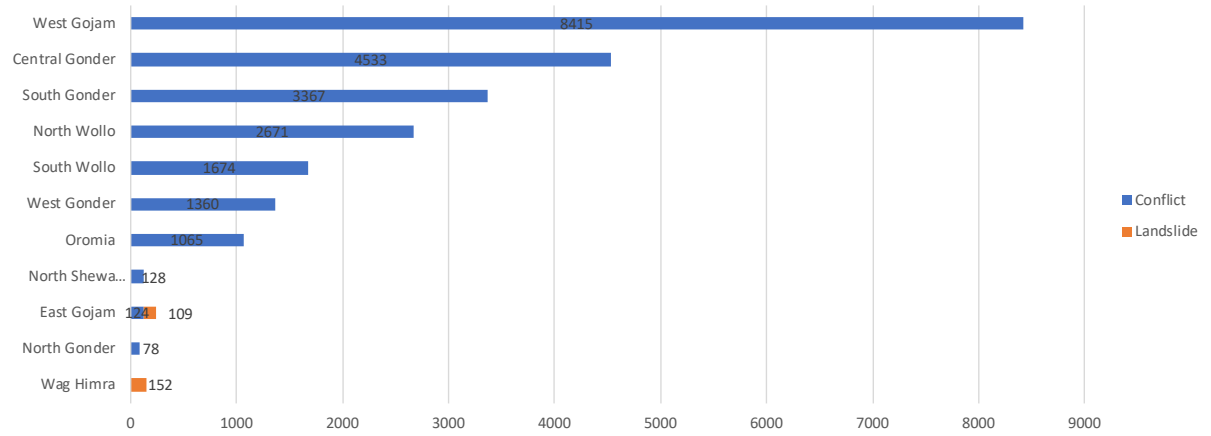
**MOBILITY TRENDS AND CAUSE OF DISPLACEMENT**

Conflict has consistently been reported as the primary cause of displacement in the region (as indicated by figure 4). IDPs displaced before and during 2018 were mainly displaced by conflict. In addition to this, 36% of IDPs reported being displaced previously. This indicates a significant level of mobility amongst the displaced population. Furthermore, IDPs from 27 sites were leaving the current place of displacement. Of these, IDPs from 5 sites were going to the nearest village and IDPs from 1 site intend to return to their place of origin.

Regarding the duration of sites, none of the sites identified opened in 2019 while 57% opened between January and December 2018 and 43% of sites opened before 2018.

The majority of IDPs identified in the region were displaced to locations near their areas of origin. 33% of IDPs in the region are internally displaced from the region, within the region. Of the IDPs displaced within the region, 20% were displaced within their zone of origin.

Figure 3 shows the number of IDPs displaced by zone and cause of displacement. Figure 4 shows the distribution of IDPs by driver of displacement and time of displacement.



**Figure 3: IDPs displaced by zone and cause of displacement**

Duration	Conflict Induced	Climate Induced	Grand Total
Before 2018	10,076	152	10,228
During 2018	13,339	109	13,448
Grand Total	23,415	261	23,676

**Figure 4: Distribution of IDPs by cause of displacement and time of displacement**



# DISPLACEMENT TRACKING MATRIX (DTM) AMHARA REGION, ETHIOPIA

## ROUND 15: JANUARY - FEBRUARY 2019

### DURABLE SOLUTIONS, VULNERABILITIES AND DEMOGRAPHICS

At 53% of sites IDPs foresaw a resolution to their displacement, while IDPs at 47% of sites did not.

At 46% of sites, IDPs prefer reintegration as a durable solution to their displacement while at 20.3% sites they prefer return. 33.8% of sites reported that IDPs prefer relocation.

Figure 5 shows the number of sites reporting various obstacles to returns, while figure 6 shows support IDPs need to return or reintegrate.

The demographic breakdown is shown in figure 7. Individuals with specific vulnerabilities were also reported at displacement sites and are represented in figure 8.

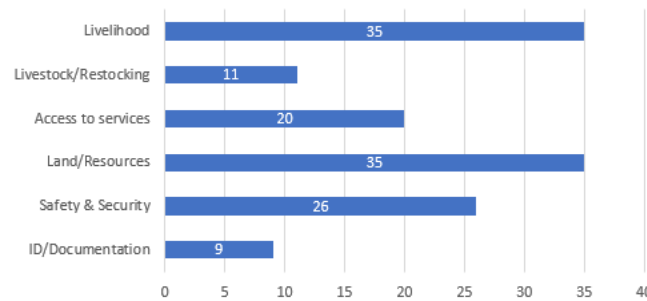


Figure 6: Number of sites by support needed to return or reintegrate

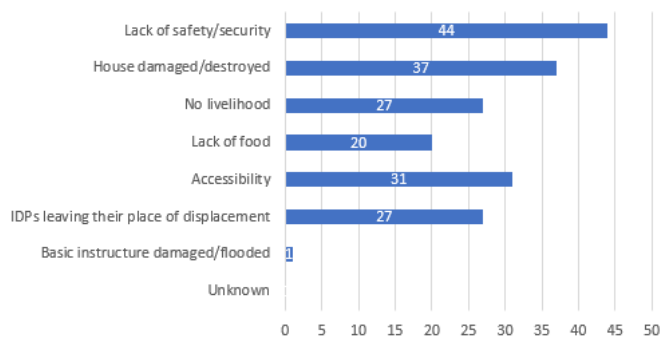


Figure 5: Number of sites reporting obstacles to return

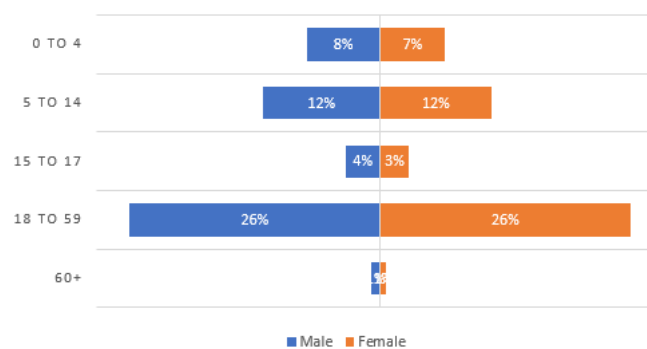


Figure 7: Demographic breakdown

Vulnerable Population	Number of IDPs
Number of breastfeeding mothers	2,772
Elderly-headed households	179
Elderly persons without care givers	141
Number of members of ethnic minorities	0
Number of members of religious minorities	30
Orphaned children	92
Persons with chronic diseases/serious medical conditions	94
Number of persons with disabilities over 18	109
Number of persons with disabilities under 18	53
Number of pregnant girls under 18	60
Number of pregnant women over 18	1,227
Separated children	92
Single female-headed households	1,112
Single male-headed households	422
Unaccompanied Children	59
Single-child headed Households	44
<b>Grand Total</b>	<b>6,486</b>

Figure 8: Vulnerable populations



# DISPLACEMENT TRACKING MATRIX (DTM) AMHARA REGION, ETHIOPIA

## ROUND 15: JANUARY - FEBRUARY 2019

INCREASE	NEW
DECREASE	UNCOVERED/CLOSED
NO CHANGE	

### Round 14 - 15 Comparison Table

Zone	Woreda	Displacement Reason	Round 15			% change in estimated # of HHs	Round 14		
			HHs	Individuals	Sites		HHs	Individuals	Sites
Central Gonder	Aykel City Administarion	Conflict	216	866	2	0.0%	216	866	2
Central Gonder	Chilga	Conflict	31	154	1	0.0%	31	154	1
Central Gonder	East Belesa	Conflict	61	265	1	0.0%	-	-	-
Central Gonder	East Dembia	Conflict	182	1,014	2	0.0%	-	-	-
Central Gonder	Lay Armacheho	Conflict	464	1,856	1	0.0%	-	-	-
Central Gonder	Tach Armacheho	Conflict	169	169	1	0.0%	-	-	-
Central Gonder	West Dembia	Conflict	37	209	1	0.0%	-	-	-
<b>Central Gonder Total</b>			<b>1,160</b>	<b>4,533</b>	<b>9</b>	<b>+369.64%</b>	<b>247</b>	<b>1,020</b>	<b>3</b>
East Gojam	Debre Markos	Conflict	28	124	1	0.0%	-	-	-
East Gojam	Goncha Siso Enese	Climate	24	109	1	+9.09%	22	102	1
<b>East Gojam Total</b>			<b>52</b>	<b>233</b>	<b>2</b>	<b>+136.36%</b>	<b>22</b>	<b>102</b>	<b>1</b>
North Gonder	Addi Arekay	Conflict	78	78	2	0.0%	-	-	-
<b>North Gonder Total</b>			<b>78</b>	<b>78</b>	<b>2</b>	<b>0.0%</b>	<b>-</b>	<b>-</b>	<b>-</b>
North Shewa (R3)	Minjar Shenkora	Conflict	40	128	1	0.0%	40	128	1
<b>North Shewa (R3) Total</b>			<b>40</b>	<b>128</b>	<b>1</b>	<b>0.0%</b>	<b>40</b>	<b>128</b>	<b>1</b>
North Wollo	Guba Lafto	Conflict	189	508	6	-1.05%	191	482	6
North Wollo	Habru	Conflict	104	196	2	0.0%	104	196	2
North Wollo	Kobo	Conflict	741	1,967	3	+4.22%	711	1,937	3
<b>North Wollo Total</b>			<b>1,034</b>	<b>2,671</b>	<b>11</b>	<b>+2.78%</b>	<b>1,006</b>	<b>2,615</b>	<b>11</b>
Oromia	Bati	Conflict	106	543	3	0.0%	106	543	3
Oromia	Dewa Harewa	Conflict	101	522	3	0.0%	101	522	3
<b>Oromia Total</b>			<b>207</b>	<b>1,065</b>	<b>6</b>	<b>0.0%</b>	<b>207</b>	<b>1,065</b>	<b>6</b>



## DISPLACEMENT TRACKING MATRIX (DTM) AMHARA REGION, ETHIOPIA

### ROUND 15: JANUARY - FEBRUARY 2019

INCREASE	NEW
DECREASE	UNCOVERED/CLOSED
NO CHANGE	

Zone	Woreda	Displacement Reason	Round 15			% change in estimated # of HHs	Round 14		
			HHs	Individuals	Sites		HHs	Individuals	Sites
South Gonder	Anda Bet	Conflict	75	211	1	0.0%	75	209	1
South Gonder	Debre Tabor City Administration	Conflict	298	795	5	+39.25%	214	686	5
South Gonder	Esite	Conflict	714	2,192	7	0.0%	714	2,324	7
South Gonder	Farta	Conflict	45	123	1	0.0%	45	123	1
South Gonder	Libo Kemkem	Conflict	27	46	1	+8.00%	25	42	1
<b>South Gonder Total</b>			<b>1,159</b>	<b>3,367</b>	<b>15</b>	<b>+8.01%</b>	<b>1,073</b>	<b>3,384</b>	<b>15</b>
South Wollo	Kalu	Conflict	306	1,279	3	+128.36%	134	570	3
South Wollo	Mehal Sayint	Conflict	164	267	2	+173.33%	60	206	2
South Wollo	Thehulederie	Conflict	40	128	1	0.0%	40	118	1
<b>South Wollo Total</b>			<b>510</b>	<b>1,674</b>	<b>6</b>	<b>+117.95%</b>	<b>234</b>	<b>894</b>	<b>6</b>
Wag Himra	Dehana	Climate	25	152	1	0.0%	25	152	1
<b>Wag Himra Total</b>			<b>25</b>	<b>152</b>	<b>1</b>	<b>0.0%</b>	<b>25</b>	<b>152</b>	<b>1</b>
West Gojam	Bahirdar Zuria	Conflict	1,436	4,064	3	+149.31%	576	1,617	2
West Gojam	Dega Damot	Conflict	509	1,917	7	+179.67%	182	601	6
West Gojam	Jabi Tehnan	Conflict	99	313	1	0.0%	-	-	-
West Gojam	Quarit	Conflict	39	120	1	0.0%	-	-	-
West Gojam	Sekela	Conflict	313	1,136	3	+123.57%	140	581	2
West Gojam	Wemberma	Conflict	140	865	1	0.0%	-	-	-
<b>West Gojam Total</b>			<b>2,536</b>	<b>8,415</b>	<b>16</b>	<b>+182.41%</b>	<b>898</b>	<b>2,799</b>	<b>10</b>
West Gonder	Metema	Conflict	295	1,087	4	0.0%	295	1,087	4
West Gonder	Metema Yohanes City Administarion	Conflict	62	273	1	0.0%	62	273	1
<b>West Gonder Total</b>			<b>357</b>	<b>1,360</b>	<b>5</b>	<b>0.0%</b>	<b>357</b>	<b>1,360</b>	<b>5</b>



# DISPLACEMENT TRACKING MATRIX (DTM) AMHARA REGION, ETHIOPIA

## ROUND 15: JANUARY - FEBRUARY 2019

INCREASE	NEW
DECREASE	UNCOVERED/CLOSED
NO CHANGE	

Zone	Woreda	Displacement Reason	Round 15			% change in estimated # of HHs	Round 14		
			HHs	Individuals	Sites		HHs	Individuals	Sites
Climate Induced Sum			49	261	2	+4.26%	47	254	2
Conflict Induced Sum			7,109	23,415	72	+75.01%	4,062	13,265	57
<b>Grand Total</b>			<b>7,158</b>	<b>23,676</b>	<b>74</b>	<b>+74.20%</b>	<b>4,109</b>	<b>13,519</b>	<b>59</b>





## DISPLACEMENT TRACKING MATRIX (DTM) AMHARA REGION, ETHIOPIA ROUND 15: JANUARY - FEBRUARY 2019

### ABOUT DTM

#### DTM GLOBAL

The Displacement Tracking Matrix (DTM) is a system to track and monitor displacement and population mobility. It is designed to regularly and systematically capture, process and disseminate information to provide a better understanding of the movements and evolving needs of displaced populations, whether on site or en route. More information is available at [www.globaldtm.info](http://www.globaldtm.info).

#### DTM IN ETHIOPIA

In Ethiopia, data is collected at zone, woreda and site level. Since September 2016, fifteen rounds of assessments have been completed. The DTM programme is implemented in close collaboration with the National Disaster Risk Management Commission, regional, zonal and woreda counterparts and DTMs implementing partner, the Danish Refugee Council (DRC).

#### METHODOLOGY

IOM's DTM team composed of enumerators from IOM and DRC were deployed across the country to collect the data. The process involved the following steps:

Zone level: Interviews with key informants from

the Disaster Prevention and Preparedness Office (DPPO), community representatives, and the education and health offices collect information including (among others) estimated caseload of displaced population, identification of woredas within the zone that host displaced populations, reason for displacement, time of arrival of IDPs and location of origin.

Woreda level: Information is collected from key woreda informants and includes (among others) estimated length of stay, number of displaced households and individuals at woreda level, displaced population by type of temporary settlements and approximate locations of identifiable displacement sites. The information is used to plan site assessments.

Site assessments: In-depth IDP site assessments capture detailed information through key informant interviews, direct observation and focus group discussions with male, female, elderly, children and IDP representatives. Data on available services by sector, accessibility constraints, exact type, location and name of the site, place of origin of IDPs, estimated size and type of the site and most common type of shelter are captured. Age and gender disaggregation for the site is extrapolated using a demographic calculator

tool based on the age range and sex of the household members of 20 randomly selected households from the site.

*For more information please visit our website, [www.displacement.iom.int](http://www.displacement.iom.int), or contact us at [dtmethiopia@iom.int](mailto:dtmethiopia@iom.int)*



Humanitarian Aid  
and Civil Protection





International Organization for Migration (IOM)  
The UN Migration Agency

**ANNEX I : INTERNAL DISPLACEMENTS IN AMHARA REGION AS OF FEBRUARY 2019**

Zone	Woreda	Sex	Age Groups					Total	HHs	Site Open Date	Cause	Duration
			Infants (0-4 y)	Children (5-14 y)	Youth (15-17 y)	Adults (18-59 y)	Elderly (60 +y)					
Central Gonder	Aykel City Administrarion	Female	68	89	39	232	17	445	216	11-Dec-15	Conflict	Before 2018
Central Gonder	Aykel City Administrarion	Male	55	99	64	199	4	421				
Central Gonder	Chilga	Female	6	15	7	49	1	78	31	15-Dec-15	Conflict	Before 2018
Central Gonder	Chilga	Male	7	16	10	42	1	76				
Central Gonder	East Belesa	Female	9	52	15	67	0	143	61	12-Nov-18	Conflict	During 2018
Central Gonder	East Belesa	Male	12	40	12	58	0	122				
Central Gonder	East Dembia	Female	40	144	4	243	15	446	182	03-Dec-18	Conflict	During 2018
Central Gonder	East Dembia	Male	47	125	98	290	8	568				
Central Gonder	Lay Armacheho	Female	70	371	46	418	0	905	464	29-Nov-18	Conflict	During 2018
Central Gonder	Lay Armacheho	Male	139	418	46	348	0	951				
Central Gonder	Tach Armacheho	Female	0	0	0	2	0	2	169	21-Nov-18	Conflict	During 2018
Central Gonder	Tach Armacheho	Male	0	0	0	167	0	167				
Central Gonder	West Dembia	Female	9	39	11	46	2	107	37	05-Dec-18	Conflict	During 2018
Central Gonder	West Dembia	Male	11	24	13	54	0	102				
<b>Central Gonder Total</b>			<b>473</b>	<b>1,432</b>	<b>365</b>	<b>2,215</b>	<b>48</b>	<b>4,533</b>	<b>1,160</b>			
East Gojam	Debre Markos	Female	13	15	2	29	0	59	28	29-Sep-18	Conflict	During 2018
East Gojam	Debre Markos	Male	9	20	5	31	0	65				
East Gojam	Goncha Siso Enese	Female	6	14	7	26	3	56	24	27-Aug-18	Landslide	During 2018
East Gojam	Goncha Siso Enese	Male	3	18	5	26	1	53				
<b>East Gojam Total</b>			<b>31</b>	<b>67</b>	<b>19</b>	<b>112</b>	<b>4</b>	<b>233</b>	<b>52</b>			
North Gonder	Addi Arekay	Female	0	0	0	0	0	0	39	07-Nov-18	Conflict	During 2018
North Gonder	Addi Arekay	Male	0	0	0	39	0	39				
North Gonder	Addi Arekay	Female	0	0	0	0	0	0	39	07-Dec-18	Conflict	During 2018
North Gonder	Addi Arekay	Male	0	0	0	39	0	39				
<b>North Gonder Total</b>			<b>-</b>	<b>-</b>	<b>-</b>	<b>78</b>	<b>-</b>	<b>78</b>	<b>78</b>			
North Shewa (R3)	Minjar Shenkora	Female	8	20	0	40	0	68	40	23-Jul-18	Conflict	During 2018
North Shewa (R3)	Minjar Shenkora	Male	8	14	8	30	0	60				
<b>North Shewa (R3) Total</b>			<b>16</b>	<b>34</b>	<b>8</b>	<b>70</b>	<b>-</b>	<b>128</b>	<b>40</b>			
North Wollo	Guba Lafto	Female	4	17	3	34	6	64	51	10-Nov-17	Conflict	Before 2018
North Wollo	Guba Lafto	Male	6	9	4	33	2	54				
North Wollo	Guba Lafto	Female	3	1	1	17	5	27	28	19-Nov-17	Conflict	Before 2018
North Wollo	Guba Lafto	Male	0	4	0	15	3	22				
North Wollo	Guba Lafto	Female	7	15	6	36	3	67	44	21-Nov-17	Conflict	Before 2018
North Wollo	Guba Lafto	Male	6	18	7	34	9	74				
North Wollo	Guba Lafto	Female	1	4	3	13	1	22	23	05-Dec-17	Conflict	Before 2018
North Wollo	Guba Lafto	Male	0	2	4	18	3	27				
North Wollo	Guba Lafto	Female	4	6	3	14	1	28	22	28-Dec-17	Conflict	Before 2018
North Wollo	Guba Lafto	Male	3	8	4	16	2	33				
North Wollo	Guba Lafto	Female	2	11	9	24	1	47	21	08-Feb-18	Conflict	During 2018
North Wollo	Guba Lafto	Male	6	13	6	18	0	43				
North Wollo	Habru	Female	3	15	14	58	6	96	104	30-Oct-17	Conflict	Before 2018
North Wollo	Habru	Male	4	13	10	67	6	100				
North Wollo	Kobo	Female	117	235	94	385	15	846	427	03-Sep-18	Conflict	During 2018
North Wollo	Kobo	Male	129	121	106	425	26	807				
North Wollo	Kobo	Female	0	0	0	114	0	114	114	01-Nov-18	Conflict	During 2018
North Wollo	Kobo	Male	0	0	0	0	0	0				
North Wollo	Kobo	Female	0	0	0	0	0	0	200	04-Nov-18	Conflict	During 2018
North Wollo	Kobo	Male	0	0	0	200	0	200				
<b>North Wollo Total</b>			<b>295</b>	<b>492</b>	<b>274</b>	<b>1,521</b>	<b>89</b>	<b>2,671</b>	<b>1,034</b>			



International Organization for Migration (IOM)  
The UN Migration Agency

**ANNEX I : INTERNAL DISPLACEMENTS IN AMHARA REGION AS OF FEBRUARY 2019**

Zone	Woreda	Sex	Age Groups					Total	HHs	Site Open Date	Cause	Duration
			Infants (0-4 y)	Children (5-14 y)	Youth (15-17 y)	Adults (18-59 y)	Elderly (60 +y)					
Oromia	Bati	Female	31	15	10	51	8	115				
Oromia	Bati	Male	23	26	13	56	10	128	51	22-Apr-17	Conflict	Before 2018
Oromia	Bati	Female	39	39	6	54	6	144				
Oromia	Bati	Male	25	54	15	54	8	156	55	12-Dec-17	Conflict	Before 2018
Oromia	Dewa Harewa	Female	16	13	8	27	5	69				
Oromia	Dewa Harewa	Male	14	19	7	26	3	69	25	15-Jan-01	Conflict	Before 2018
Oromia	Dewa Harewa	Female	18	27	9	40	5	99				
Oromia	Dewa Harewa	Male	23	20	9	32	11	95	36	15-Jan-04	Conflict	Before 2018
Oromia	Dewa Harewa	Female	14	22	8	40	6	90				
Oromia	Dewa Harewa	Male	18	24	10	36	12	100	40	01-Jan-09	Conflict	Before 2018
<b>Oromia Total</b>			<b>221</b>	<b>259</b>	<b>95</b>	<b>416</b>	<b>74</b>	<b>1,065</b>	<b>207</b>			
South Gonder	Anda Bet	Female	7	9	13	76	0	105				
South Gonder	Anda Bet	Male	9	11	14	72	0	106	75	18-Dec-17	Conflict	Before 2018
South Gonder	Debre Tabor City Administration	Female	6	6	2	29	0	43				
South Gonder	Debre Tabor City Administration	Male	6	12	4	39	0	61	41	05-Oct-17	Conflict	Before 2018
South Gonder	Debre Tabor City Administration	Female	14	10	5	71	0	100				
South Gonder	Debre Tabor City Administration	Male	10	33	5	62	0	110	95	11-Nov-17	Conflict	Before 2018
South Gonder	Debre Tabor City Administration	Female	5	9	2	26	0	42				
South Gonder	Debre Tabor City Administration	Male	9	14	2	33	0	58	35	14-Dec-17	Conflict	Before 2018
South Gonder	Debre Tabor City Administration	Female	34	45	10	104	0	193				
South Gonder	Debre Tabor City Administration	Male	15	23	7	143	0	188	127	23-Dec-17	Conflict	Before 2018
South Gonder	Esite	Female	6	14	6	48	0	74				
South Gonder	Esite	Male	14	14	14	57	0	99	57	20-Mar-13	Conflict	Before 2018
South Gonder	Esite	Female	29	48	19	201	0	297				
South Gonder	Esite	Male	48	48	19	162	19	296	191	10-Apr-13	Conflict	Before 2018
South Gonder	Esite	Female	34	45	6	101	0	186				
South Gonder	Esite	Male	39	28	6	84	0	157	112	10-May-13	Conflict	Before 2018
South Gonder	Esite	Female	8	24	8	175	0	215				
South Gonder	Esite	Male	48	48	32	159	0	287	159	07-Jun-13	Conflict	Before 2018
South Gonder	Esite	Female	8	13	0	42	0	63				
South Gonder	Esite	Male	16	13	0	39	0	68	52	10-Apr-15	Conflict	Before 2018
South Gonder	Esite	Female	23	16	7	52	0	98				
South Gonder	Esite	Male	10	13	3	52	0	78	65	11-Aug-15	Conflict	Before 2018
South Gonder	Esite	Female	16	35	4	74	0	129				
South Gonder	Esite	Male	16	23	8	98	0	145	78	16-Jan-16	Conflict	Before 2018
South Gonder	Farta	Female	7	16	0	38	0	61				
South Gonder	Farta	Male	9	10	1	42	0	62	45	12-Sep-17	Conflict	Before 2018
South Gonder	Libo Kemkem	Female	2	6	1	8	0	17				
South Gonder	Libo Kemkem	Male	5	4	0	20	0	29	27	07-Jul-17	Conflict	Before 2018
<b>South Gonder Total</b>			<b>453</b>	<b>590</b>	<b>198</b>	<b>2,107</b>	<b>19</b>	<b>3,367</b>	<b>1,159</b>			



International Organization for Migration (IOM)  
The UN Migration Agency

**ANNEX I : INTERNAL DISPLACEMENTS IN AMHARA REGION AS OF FEBRUARY 2019**

Zone	Woreda	Sex	Age Groups					Total	HHs	Site Open Date	Cause	Duration
			Infants (0-4 y)	Children (5-14 y)	Youth (15-17 y)	Adults (18-59 y)	Elderly (60 +y)					
South Wollo	Kalu	Female	103	103	43	248	12	509	241	15-Aug-17	Conflict	Before 2018
South Wollo	Kalu	Male	84	115	42	205	24	470				
South Wollo	Kalu	Female	23	33	20	81	10	167	65	07-Sep-18	Conflict	During 2018
South Wollo	Kalu	Male	13	26	16	68	10	133				
South Wollo	Mehal Sayint	Female	7	14	4	38	2	65	125	15-Aug-16	Conflict	Before 2018
South Wollo	Mehal Sayint	Male	8	13	6	31	2	60				
South Wollo	Mehal Sayint	Female	12	16	6	37	4	75	39	01-Sep-16	Conflict	Before 2018
South Wollo	Mehal Sayint	Male	14	18	6	27	2	67				
South Wollo	Thehulederie	Female	14	8	6	38	2	68	40	15-Sep-18	Conflict	During 2018
South Wollo	Thehulederie	Male	12	16	4	28	0	60				
<b>South Wollo Total</b>			<b>290</b>	<b>362</b>	<b>153</b>	<b>801</b>	<b>68</b>	<b>1,674</b>	<b>510</b>			
Wag Himra	Dehana	Female	10	12	9	34	7	72	25	13-Jul-17	Landslide	Before 2018
Wag Himra	Dehana	Male	14	15	11	37	3	80				
<b>Wag Himra Total</b>			<b>24</b>	<b>27</b>	<b>20</b>	<b>71</b>	<b>10</b>	<b>152</b>	<b>25</b>			
West Gojam	Bahirdar Zuria	Female	219	219	0	486	0	924	486	17-Apr-18	Conflict	During 2018
West Gojam	Bahirdar Zuria	Male	146	122	0	219	0	487				
West Gojam	Bahirdar Zuria	Female	1	0	0	7	0	8	30	28-Jul-18	Conflict	During 2018
West Gojam	Bahirdar Zuria	Male	0	0	0	23	0	23				
West Gojam	Bahirdar Zuria	Female	138	230	0	690	0	1058	920	23-Nov-18	Conflict	During 2018
West Gojam	Bahirdar Zuria	Male	230	506	0	828	0	1564				
West Gojam	Dega Damot	Female	7	9	3	18	0	37	26	23-Oct-17	Conflict	Before 2018
West Gojam	Dega Damot	Male	6	6	2	23	0	37				
West Gojam	Dega Damot	Female	47	86	39	157	0	329	157	08-Nov-17	Conflict	Before 2018
West Gojam	Dega Damot	Male	94	110	16	63	0	283				
West Gojam	Dega Damot	Female	8	9	1	28	0	46	28	20-Nov-17	Conflict	Before 2018
West Gojam	Dega Damot	Male	9	14	4	17	0	44				
West Gojam	Dega Damot	Female	19	10	10	48	0	87	48	24-Nov-17	Conflict	Before 2018
West Gojam	Dega Damot	Male	5	31	0	50	0	86				
West Gojam	Dega Damot	Female	64	137	37	192	0	430	183	03-Dec-17	Conflict	Before 2018
West Gojam	Dega Damot	Male	73	73	55	165	0	366				
West Gojam	Dega Damot	Female	13	13	0	59	0	85	67	24-Dec-17	Conflict	Before 2018
West Gojam	Dega Damot	Male	12	17	3	55	0	87				
West Gojam	Jabi Tehnan	Female	30	35	5	94	0	164	99	06-Nov-18	Conflict	During 2018
West Gojam	Jabi Tehnan	Male	20	25	0	104	0	149				
West Gojam	Quarit	Female	8	21	4	39	0	72	39	20-Nov-18	Conflict	During 2018
West Gojam	Quarit	Male	8	14	1	25	0	48				
West Gojam	Sekela	Female	18	29	8	90	0	145	100	28-Sep-09	Conflict	Before 2018
West Gojam	Sekela	Male	22	32	12	112	0	178				
West Gojam	Sekela	Female	17	29	8	66	0	120	47	15-Apr-18	Conflict	During 2018
West Gojam	Sekela	Male	23	53	8	51	0	135				
West Gojam	Sekela	Female	32	82	12	129	0	255	166	15-Nov-18	Conflict	During 2018
West Gojam	Sekela	Male	45	101	20	137	0	303				
West Gojam	Wemberma	Female	69	49	28	230	4	380	140	09-Nov-18	Conflict	During 2018
West Gojam	Wemberma	Male	76	73	33	258	45	485				
<b>West Gojam Total</b>			<b>1,459</b>	<b>2,135</b>	<b>309</b>	<b>4,463</b>	<b>49</b>	<b>8,415</b>	<b>2,536</b>			



International Organization for Migration (IOM)  
The UN Migration Agency

**ANNEX I : INTERNAL DISPLACEMENTS IN AMHARA REGION AS OF FEBRUARY 2019**

Zone	Woreda	Sex	Age Groups					Total	HHs	Site Open Date	Cause	Duration
			Infants (0-4 y)	Children (5-14 y)	Youth (15-17 y)	Adults (18-59 y)	Elderly (60 +y)					
West Gonder	Metema	Female	8	13	5	21	1	48	21	16-Dec-15	Conflict	Before 2018
West Gonder	Metema	Male	4	14	2	28	0	48				
West Gonder	Metema	Female	15	36	61	107	5	224	102	17-Dec-15	Conflict	Before 2018
West Gonder	Metema	Male	36	41	15	97	15	204				
West Gonder	Metema	Female	46	83	15	146	0	290	172	04-Nov-18	Conflict	During 2018
West Gonder	Metema	Male	69	46	26	132	0	273				
West Gonder	Metema Yohanes City Administarion	Female	3	31	9	65	0	108	62	05-Nov-18	Conflict	During 2018
West Gonder	Metema Yohanes City Administarion	Male	19	56	16	71	3	165				
<b>West Gonder Total</b>			<b>200</b>	<b>320</b>	<b>149</b>	<b>667</b>	<b>24</b>	<b>1,360</b>	<b>357</b>			
<b>Grand Total</b>			<b>3,462</b>	<b>5,718</b>	<b>1,590</b>	<b>12,521</b>	<b>385</b>	<b>23,676</b>	<b>7,158</b>			

**Disclaimer:** Age and gender disaggregation for the site is extrapolated using a demographic calculator tool based on the age range and sex of the household members of 20 randomly selected households from the site.

**Displacement Tracking Matrix (DTM) conducted in collaboration with Danish Refugee Council (DRC)**



Humanitarian Aid  
and Civil Protection



Schweizerische Eidgenossenschaft  
Confédération suisse  
Confederazione Svizzera  
Confederaziun svizra  
Swiss Agency for Development  
and Cooperation SDC



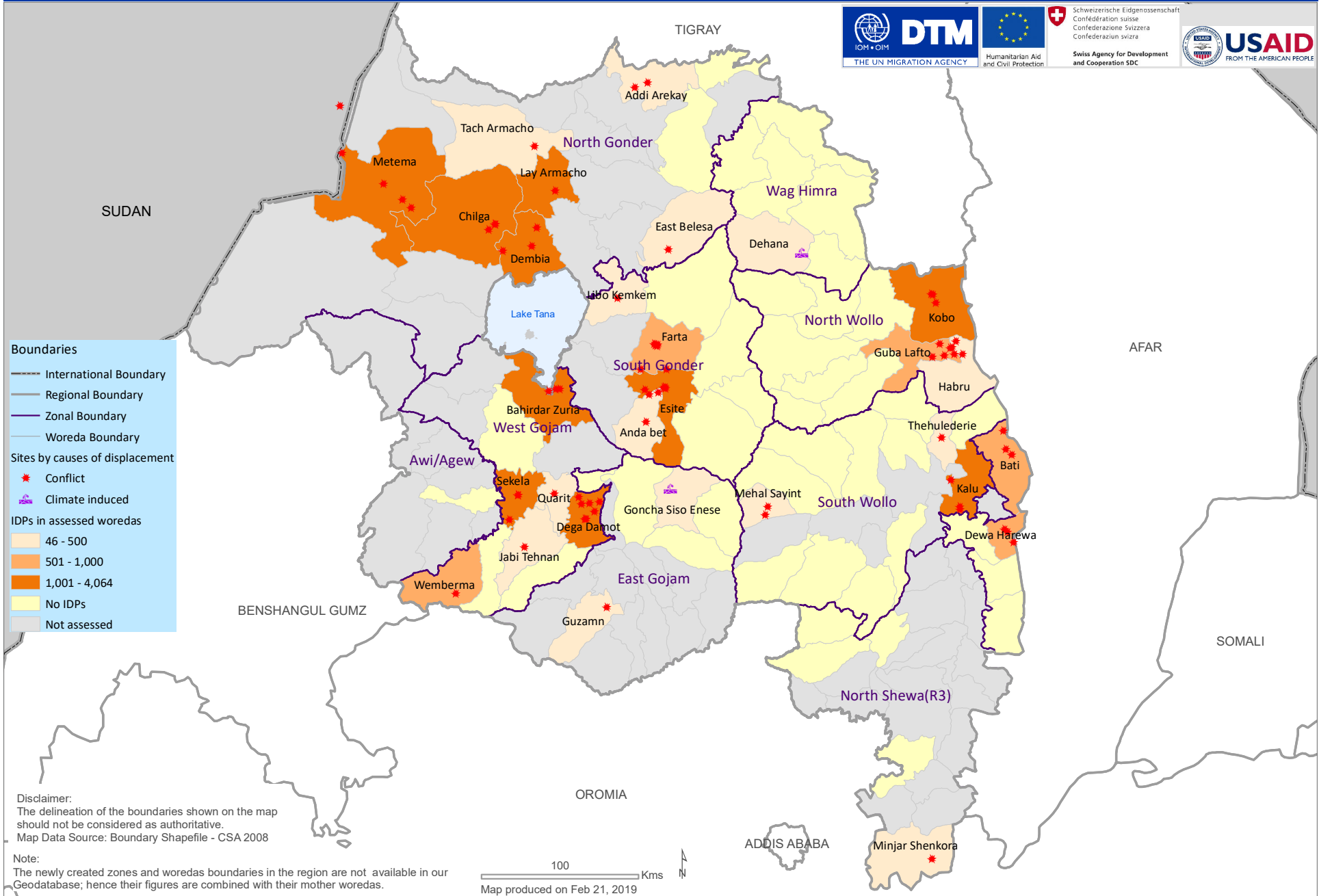
USAID  
FROM THE AMERICAN PEOPLE

DTM made possible thanks to the European Civil Protection and Humanitarian Aid Operations (ECHO), the Ethiopian Humanitarian Fund (EHF), the Office of United States Foreign Disaster Assistance (OFDA) and the Swiss agency for Development and Cooperation (SDC).

*The opinions expressed in this report are those of the authors and do not necessarily reflect the views of the Office of United States Foreign Disaster Assistance.*

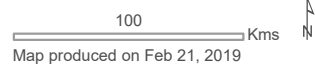
# Annex II - Amhara region displacement causes and IDPs in assessed woredas

DTM round fifteen (01/01 - 31/01, 2019)

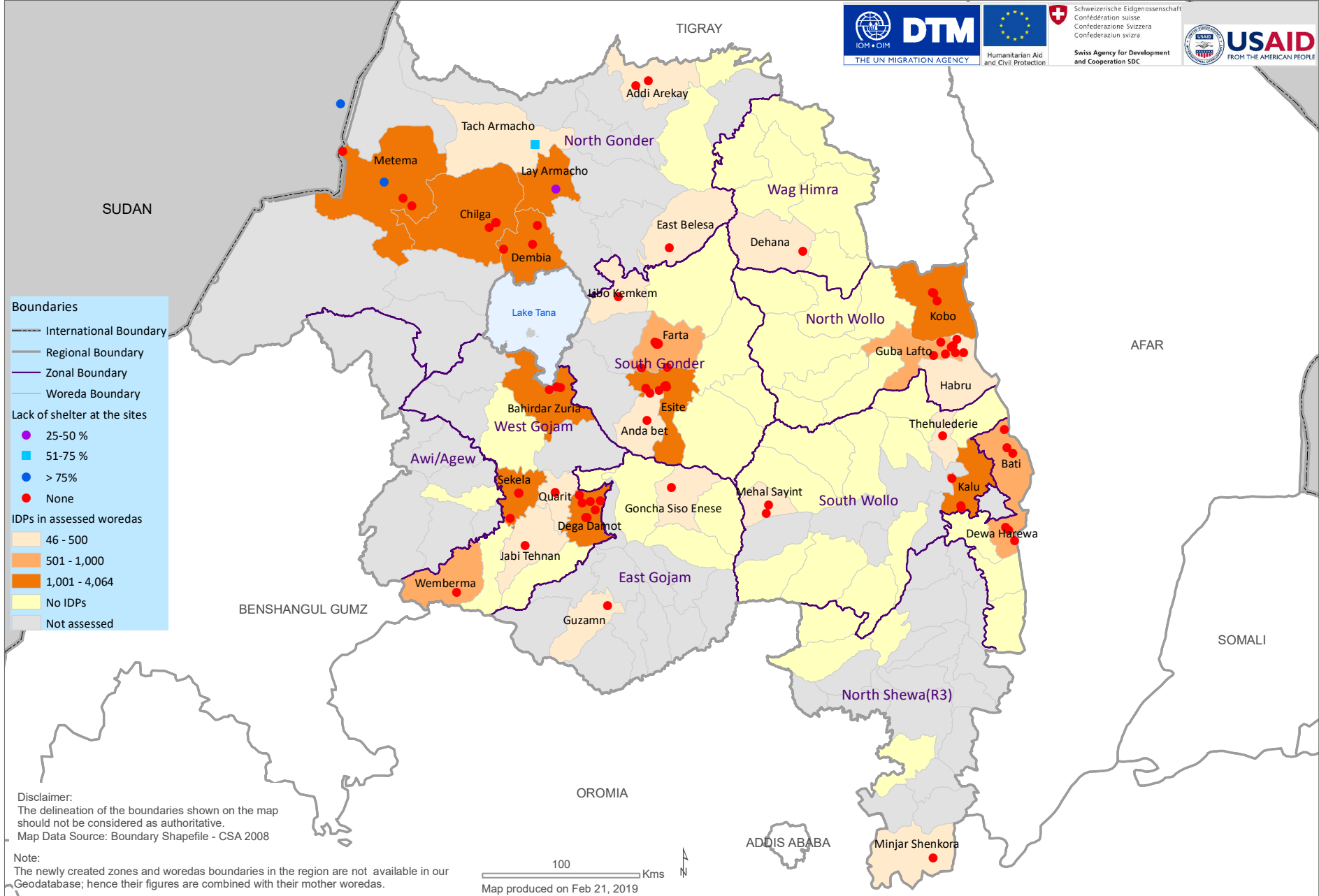


Disclaimer:  
The delineation of the boundaries shown on the map should not be considered as authoritative.  
Map Data Source: Boundary Shapefile - CSA 2008

Note:  
The newly created zones and woredas boundaries in the region are not available in our Geodatabase; hence their figures are combined with their mother woredas.

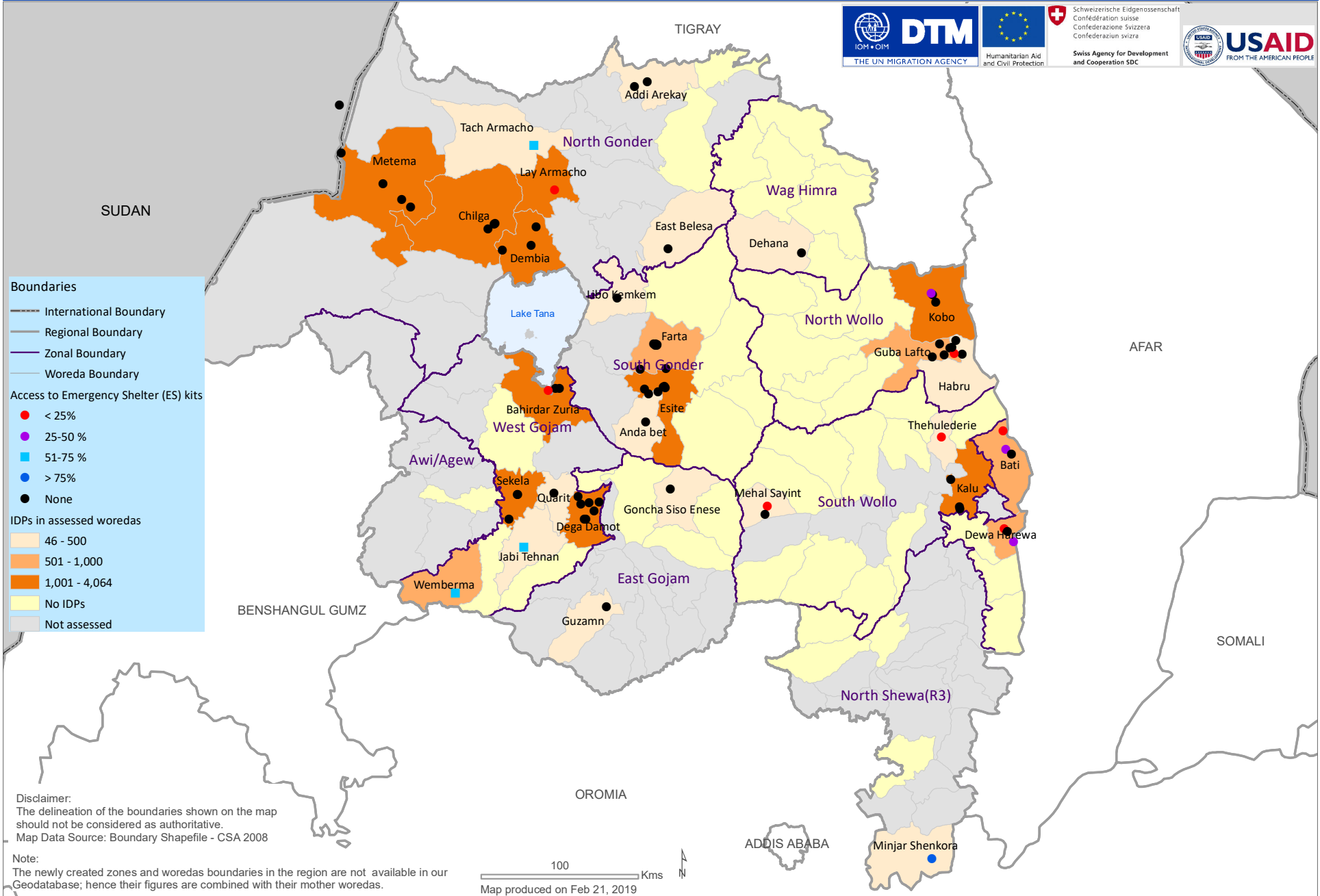


Annex III - Amhara region households reporting lack of shelter at the sites and IDPs in assessed woredas DTM round fifteen (01/01 - 31/01, 2019)



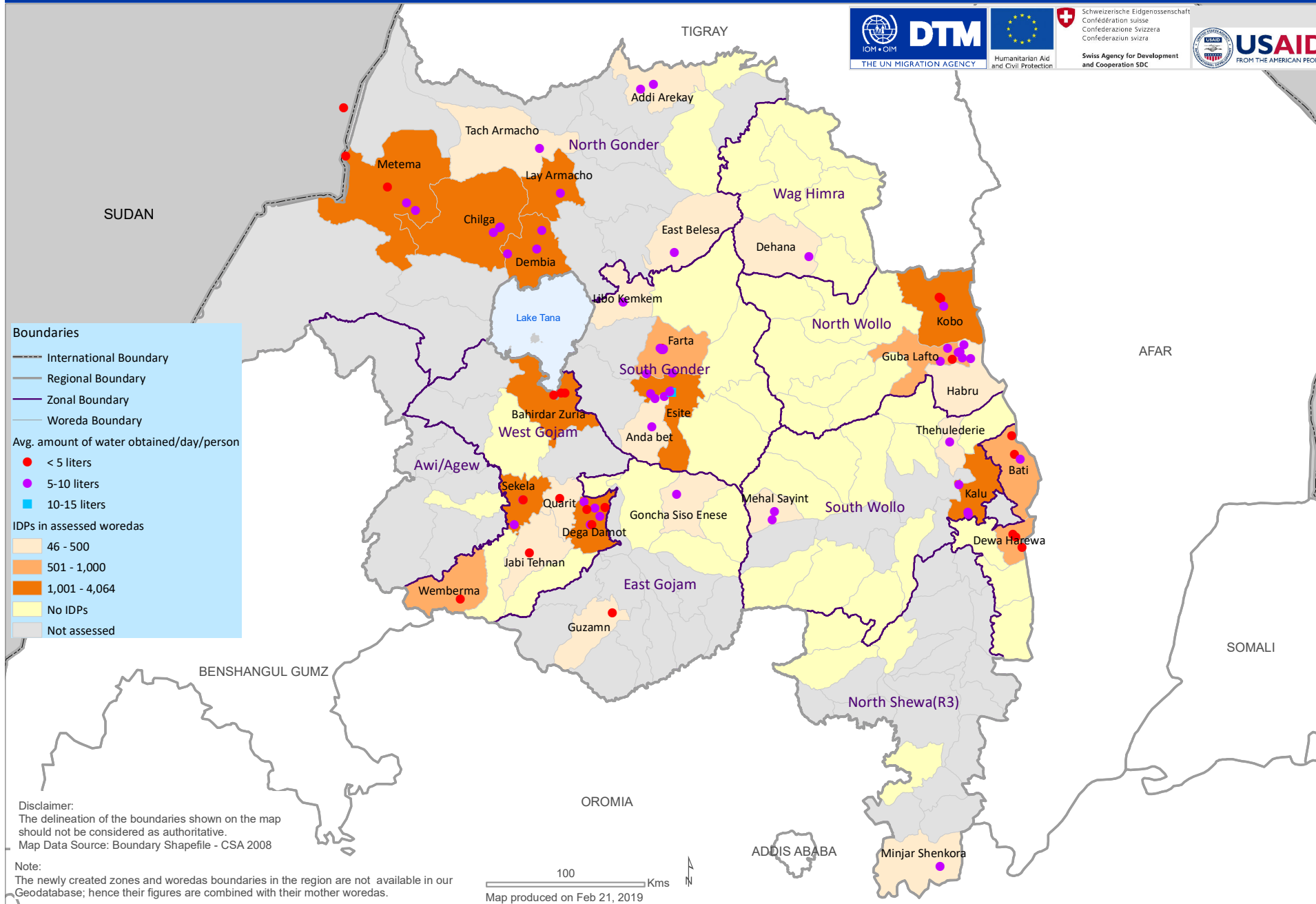
# Annex IV - Amhara region households access to ES Kits and IDPs in assessed woredas

DTM round fifteen (01/01 - 31/01, 2019)

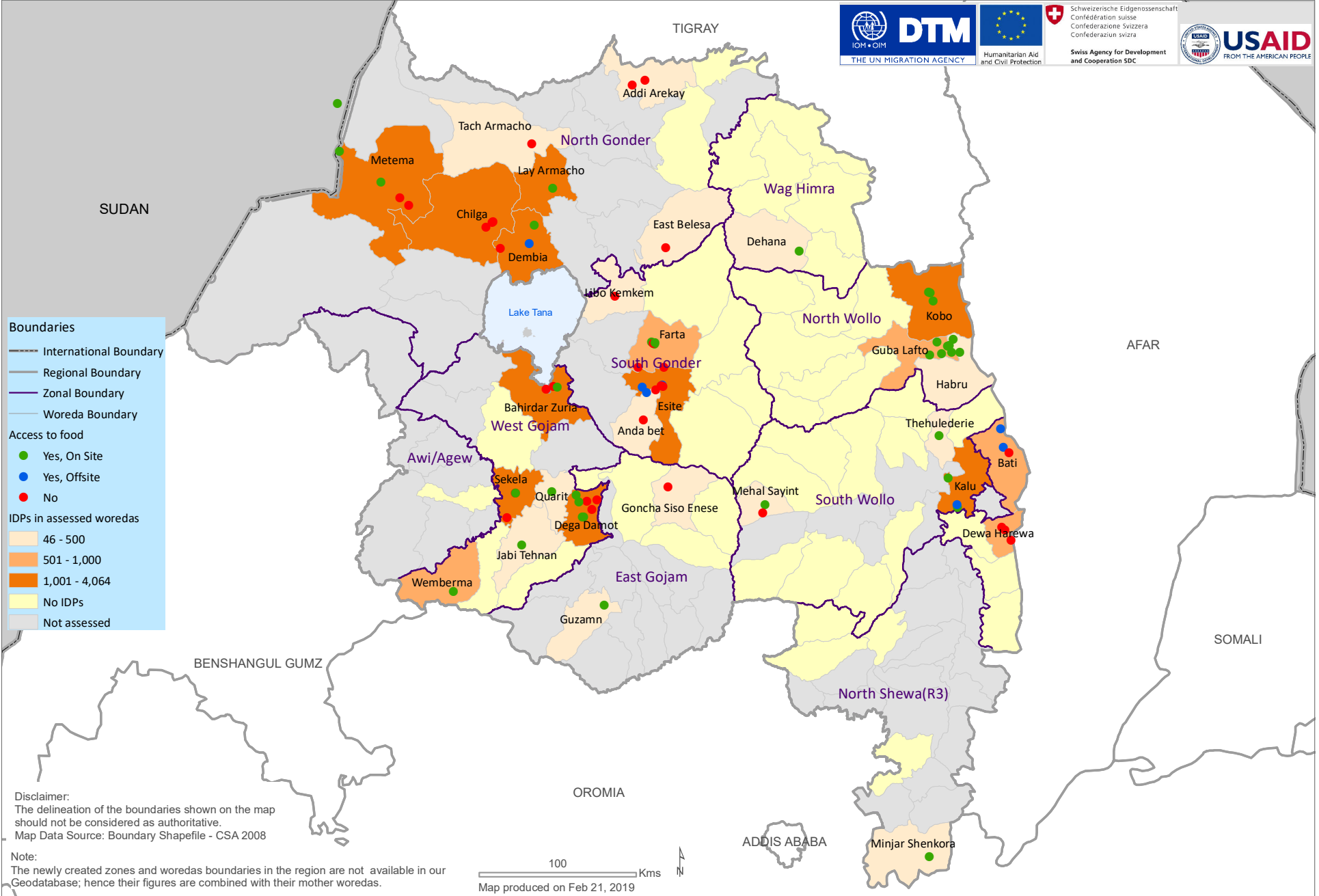




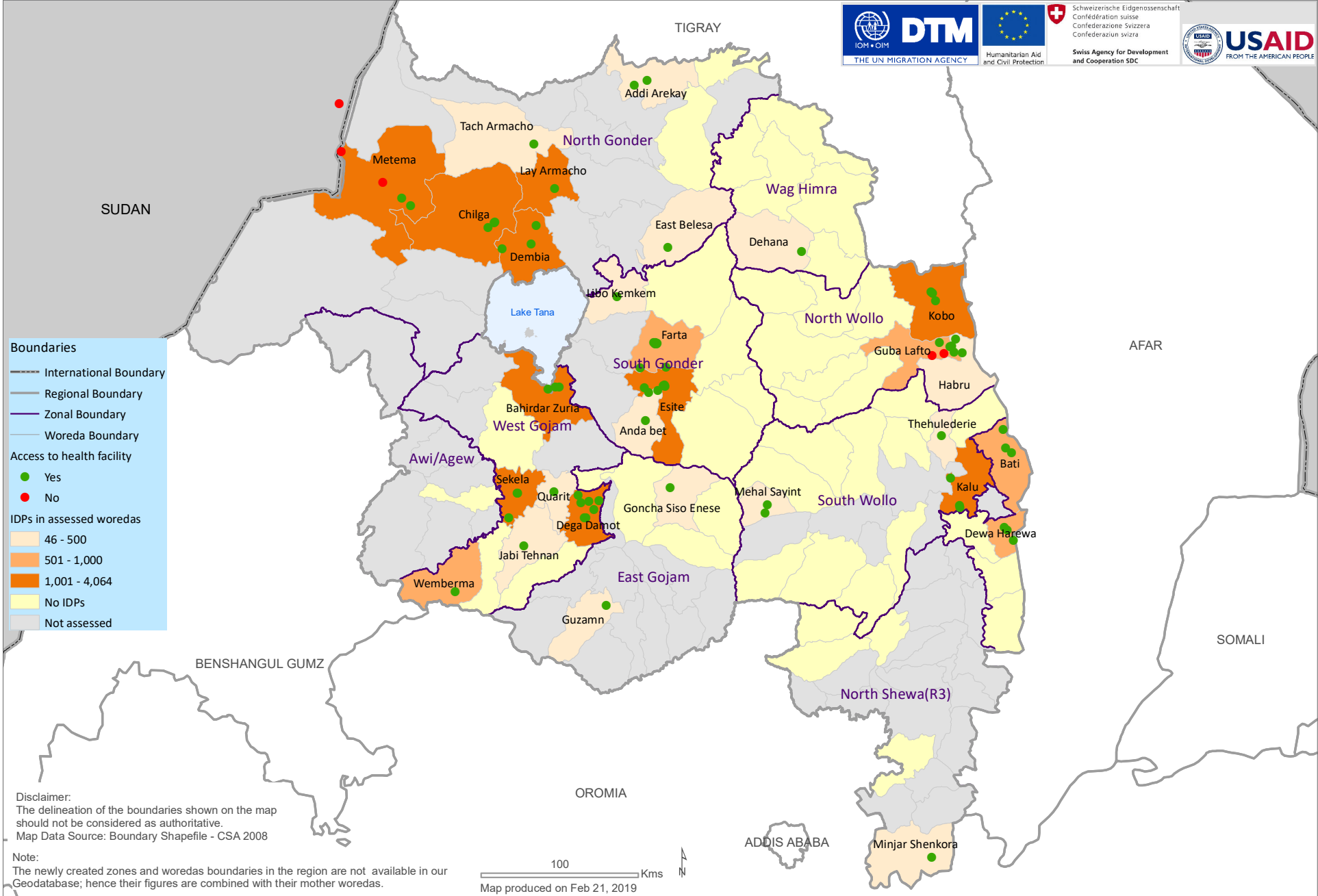
# Annex V - Amhara region sites reporting access to water and IDPs in assessed woredas DTM round fifteen (01/01 - 31/01, 2019)



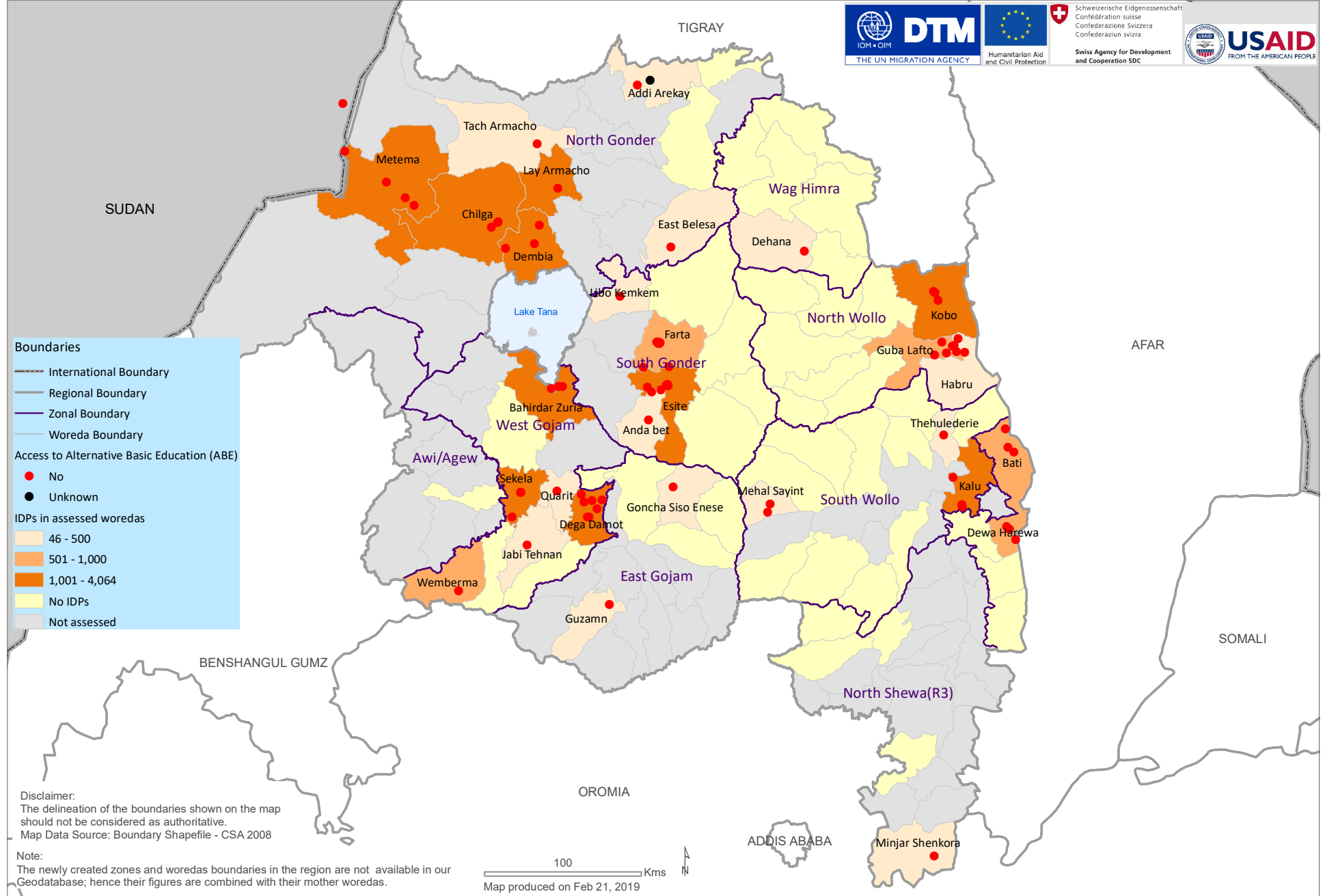
# Annex VI - Amhara region sites reporting access to food and IDPs in assessed woredas DTM round fifteen (01/01 - 31/01, 2019)



Annex VII - Amhara region sites reporting access to health facility and IDPs in assessed woredas DTM round fifteen (01/01 - 31/01, 2019)



# Annex VIII - Amhara region sites reporting access to ABE and IDPs in assessed woredas DTM round fifteen (01/01 - 31/01, 2019)



# Annex IX - Amhara region sites reporting access to Formal PES and IDPs in assessed woredas DTM round fifteen (01/01 - 31/01, 2019)



**Boundaries**

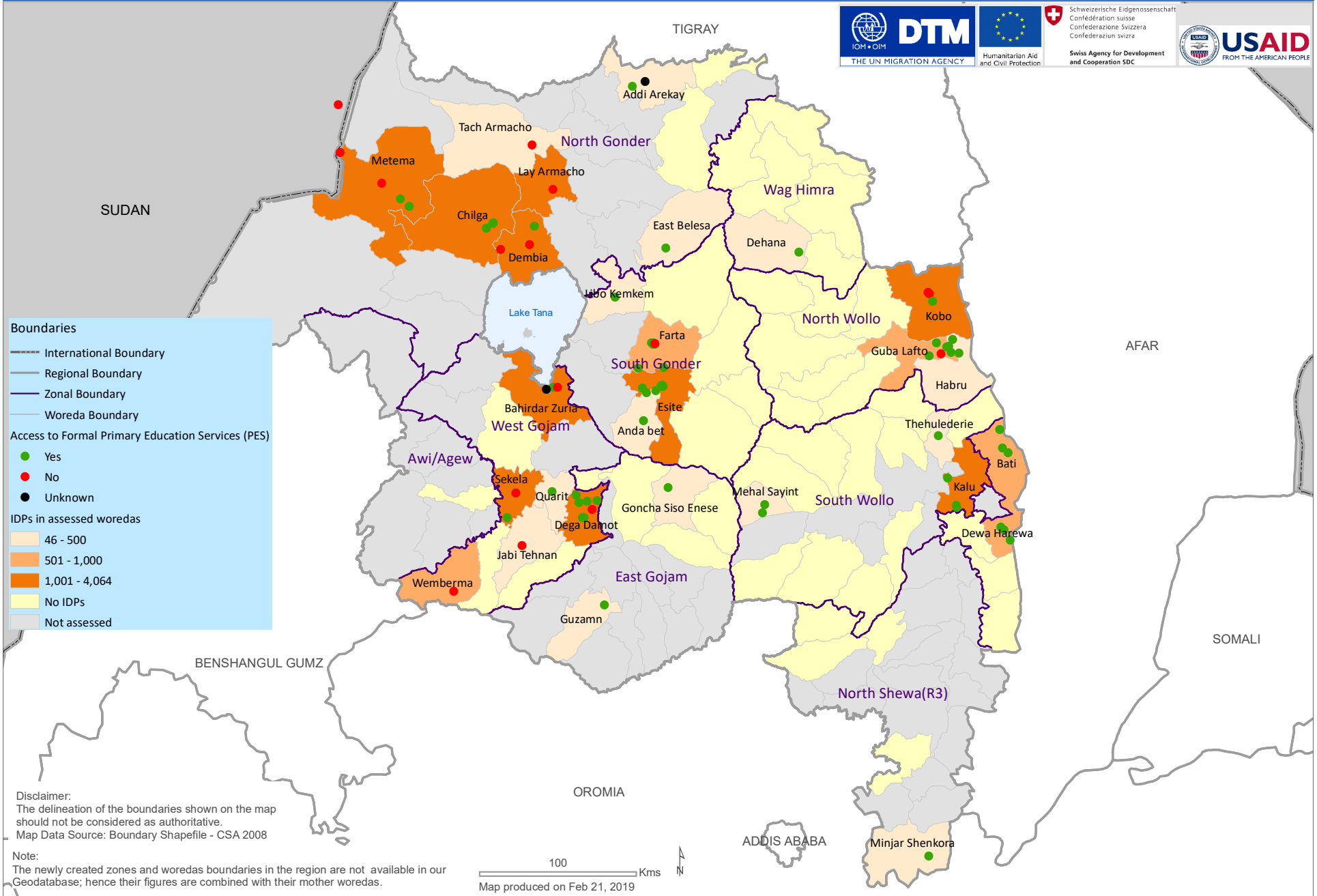
- International Boundary
- Regional Boundary
- Zonal Boundary
- Woreda Boundary

**Access to Formal Primary Education Services (PES)**

- Yes (Green dot)
- No (Red dot)
- Unknown (Black dot)

**IDPs in assessed woredas**

- 46 - 500 (Light orange)
- 501 - 1,000 (Medium orange)
- 1,001 - 4,064 (Dark orange)
- No IDPs (Yellow)
- Not assessed (Grey)



**Disclaimer:**  
The delineation of the boundaries shown on the map should not be considered as authoritative.  
Map Data Source: Boundary Shapefile - CSA 2008

**Note:**  
The newly created zones and woredas boundaries in the region are not available in our Geodatabase; hence their figures are combined with their mother woredas.

