

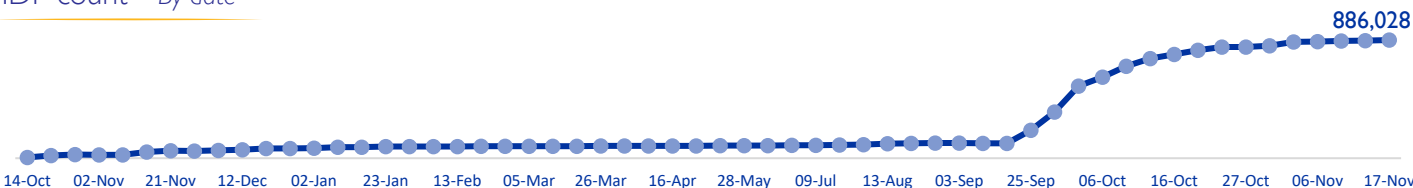
MOBILITY SNAPSHOT – Round 63

Report Production Date: 18 November 2024 | Data collected up till 4 pm on 17 November 2024

Overview

The International Organization for Migration (IOM) conducts daily monitoring of population movements to support preparedness and response efforts. This work is carried out in partnership with the Disaster Risk Management Unit, technically supported by the United Nations Development Programme, to triangulate and verify data from IOM's mobility tracking exercise and the Lebanese Red Cross household registration exercise.

IDP count – By date



IDPs by district of arrival and district of origin



886,028 (51% female and 49% male)
Total displaced individuals



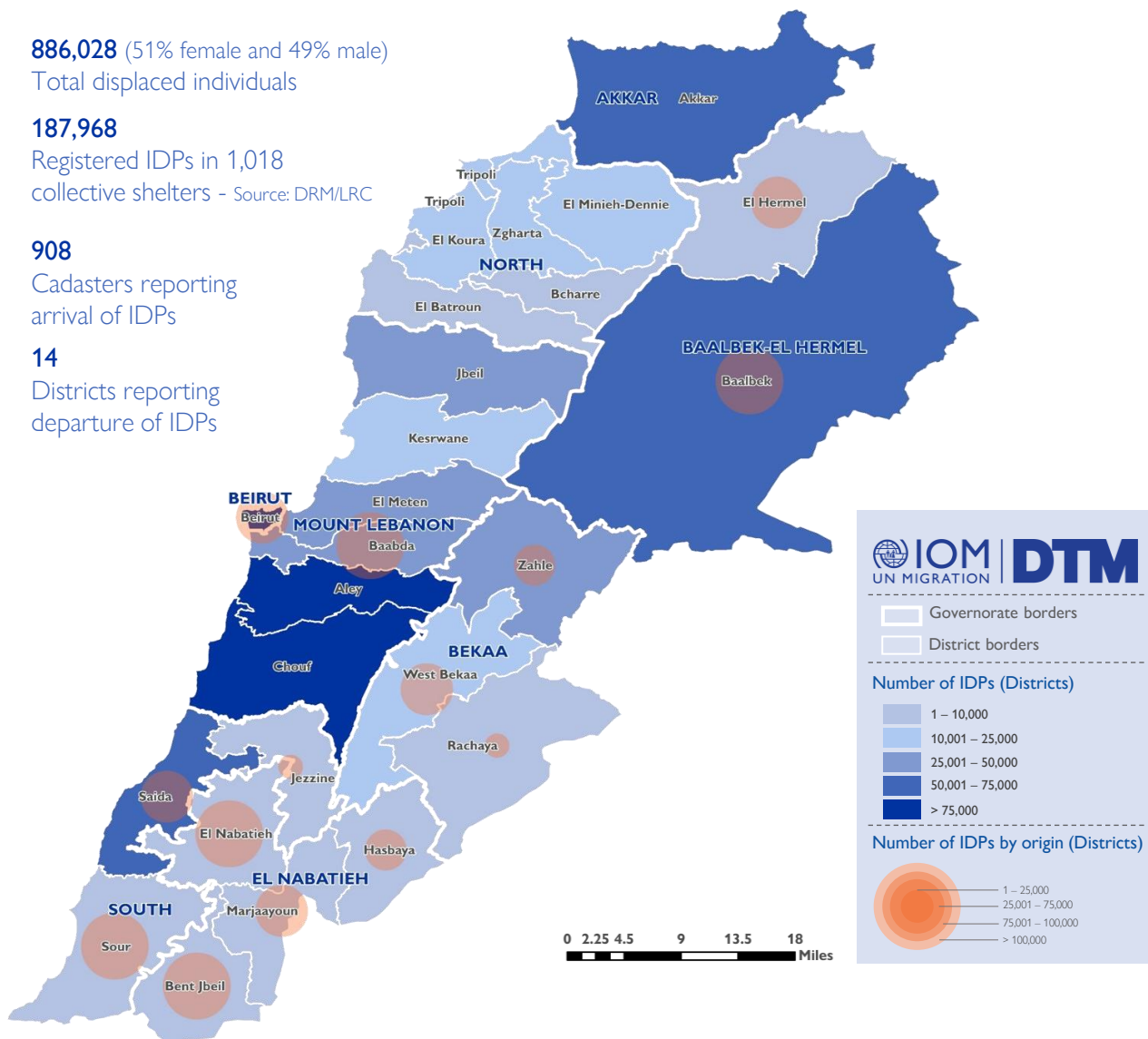
187,968
Registered IDPs in 1,018
collective shelters - Source: DRM/LRC



908
Cadasters reporting
arrival of IDPs



14
Districts reporting
departure of IDPs



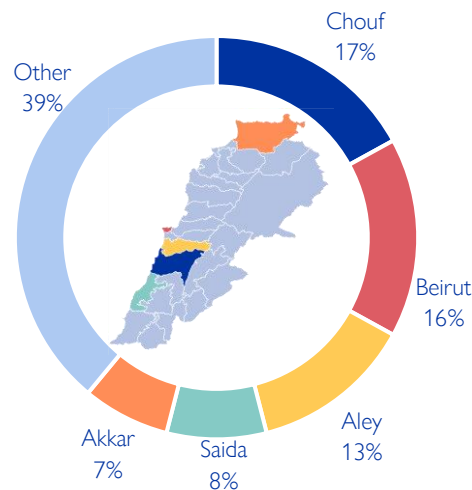
This map is for illustration purposes only. Names and boundaries on this map do not imply official endorsement or acceptance by IOM.

*DRM/LRC conducts household level registration for IDPs to inform direct assistance. This complements IOM's mobility tracking which captures an estimate of the total IDP population to inform national preparedness and response planning, as well as resource mobilisation.

Displacement within Lebanon – By district of arrival

Governorate	District	# of Cadasters	IDPs
Mount Lebanon	Chouf	84	154,329
Beirut	Beirut	12	137,630
Mount Lebanon	Aley	61	115,775
South	Saida	23	73,978
Akkar	Akkar	134	64,303
Baalbek-El Hermel	Baalbek	24	51,733
Mount Lebanon	El Meten	77	48,693
Mount Lebanon	Jbeil	66	43,379
Bekaa	Zahle	39	31,823
Mount Lebanon	Baabda	47	28,901
Mount Lebanon	Kesrwane	54	22,495
North	El Minieh-Dennie	44	20,019
Bekaa	West Bekaa	26	18,000
North	Tripoli	13	15,551
North	Zgharta	31	13,802
North	El Koura	40	12,657
South	Sour	1	8,441
South	Jezzine	31	7,865
North	El Batroun	50	6,939
Bekaa	Rachaya	19	4,090
El Nabatieh	Hasbaya	11	2,792
North	Bcharre	10	1,332
El Nabatieh	Bent Jbeil	1	613
Baalbek-El Hermel	El Hermel	1	450
El Nabatieh	El Nabatieh	7	256
El Nabatieh	Marjaayoun	2	182
Total		908	886,028

Chart 1: IDPs distribution by district of arrival

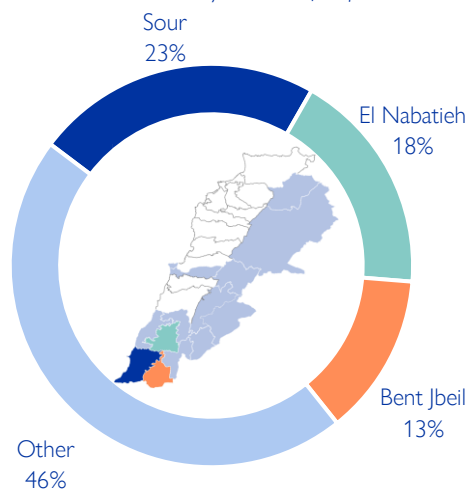


As of 17 November, Lebanon has recorded 886,028 internally displaced persons (IDPs), showing around 0.5% increase since 13 November. IDPs have sought safety in 908 cadasters throughout Lebanon. Displacement has been observed in all 26 districts across all eight governorates. 61% of the IDPs are in five districts out of the total 26 districts hosting IDPs—specifically, Chouf, Beirut, Aley, Saida, and Akkar.

Displacement within Lebanon – By district of departure

Governorate	District	IDPs
South	Sour	200,023
El Nabatieh	El Nabatieh	157,827
El Nabatieh	Bent Jbeil	114,608
Mount Lebanon	Baabda	112,392
Baalbek-El Hermel	Baalbek	81,350
El Nabatieh	Marjaayoun	72,570
South	Saida	62,835
Beirut	Beirut	31,869
Baalbek-El Hermel	El Hermel	23,678
Bekaa	West Bekaa	13,906
El Nabatieh	Hasbaya	9,795
Bekaa	Zahle	2,796
Bekaa	Rachaya	1,209
South	Jezzine	1,170
Total		886,028

Chart 2: IDPs distribution by district of departure



The majority of IDPs (54%) originate from three districts. These three districts span along the Southern border of Lebanon. Specifically, 23% are from Sour, 18% are from El Nabatieh, and 13% are from Bent Jbeil. The remaining 46% originate from 11 different districts.

New displacement within Lebanon – By district of arrival

Governorate	District	# of Cadasters	IDPs
Mount Lebanon	Chouf	7	2,018
Mount Lebanon	Aley	4	947
South	Jezzine	12	912
Mount Lebanon	Jbeil	7	712
Bekaa	Zahle	2	354
South	Saida	6	315
Mount Lebanon	El Meten	4	273
Akkar	Akkar	15	271
Mount Lebanon	Kesrwane	3	259
South	Sour	1	150
Bekaa	West Bekaa	2	106
Beirut	Beirut	1	80
North	El Minieh-Dennie	1	70
Mount Lebanon	Baabda	5	61
Baalbek-El Hermel	Baalbek	1	54
North	El Koura	4	44
Bekaa	Rachaya	1	38
North	El Batroun	3	30
North	Tripoli	2	28
El Nabatieh	Hasbaya	1	5
Total		82	6,727

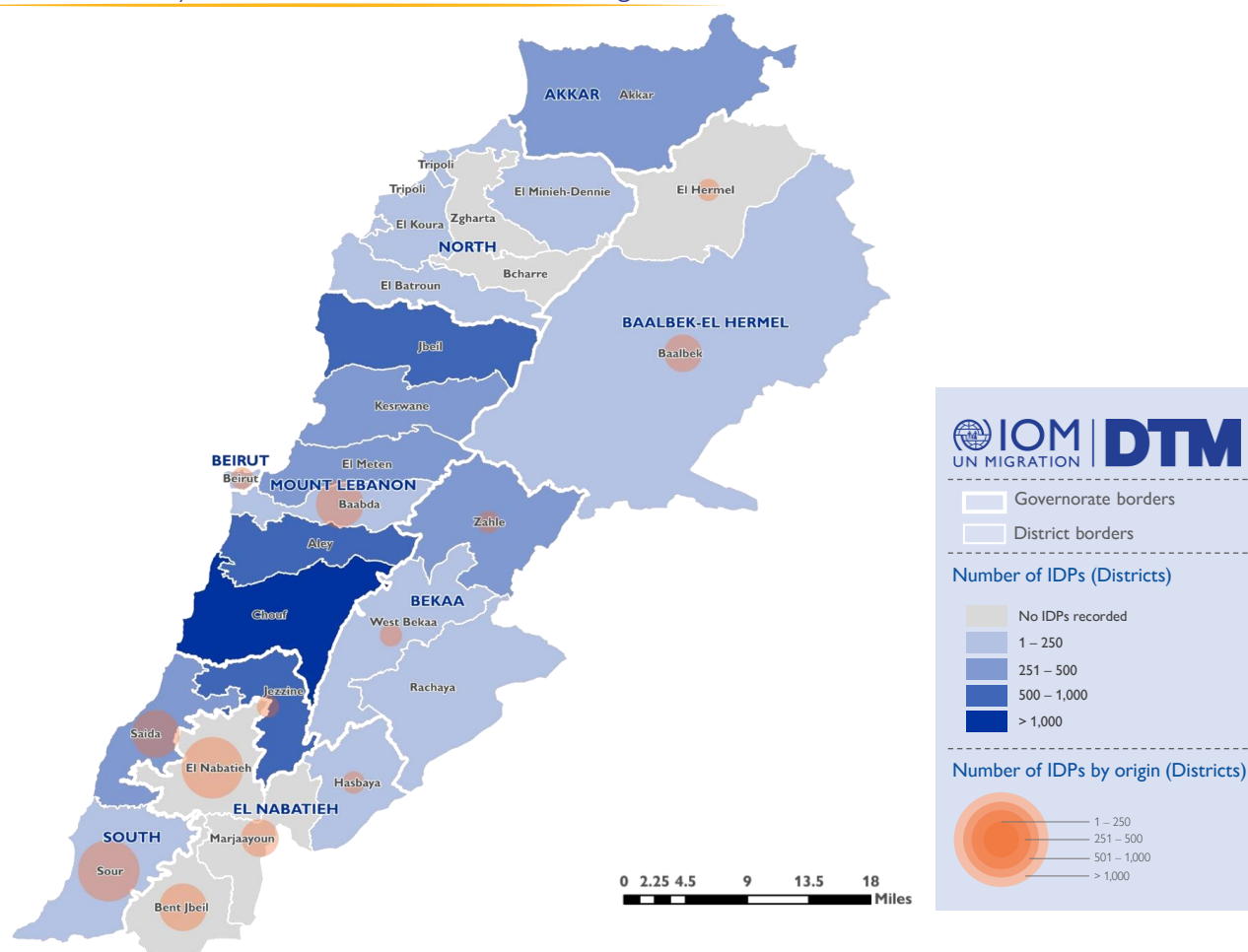
Since 13 November, there have been 6,727 new displacements. These individuals might be experiencing displacement for the first time or undergoing secondary movement.

The majority of newly displaced individuals come from Sour (30%), El Nabatieh (25%), Saida (10%), Baabda (10%), and Bent Jbeil (8%) districts. The remaining 17% relocated from Baalbek, Marjaayoun, El Hermel, Beirut, Zahle, West Bekaa, Hasbaya, and Jezzine districts.

Over the past week, the top five destinations (districts) for newly displaced individuals were Chouf (30%), Aley (14%), Jezzine (14%), Jbeil (11%), and Zahle (5%).

The increase in total number of IDPs may not always align with the number of new arrivals within a specific period. This difference often occurs when Key Informants (KIs) report cumulative totals that include previously uncounted IDPs.

Newly arrived IDPs by district of arrival and district of origin



This map is for illustration purposes only. Names and boundaries on this map do not imply official endorsement or acceptance by IOM.

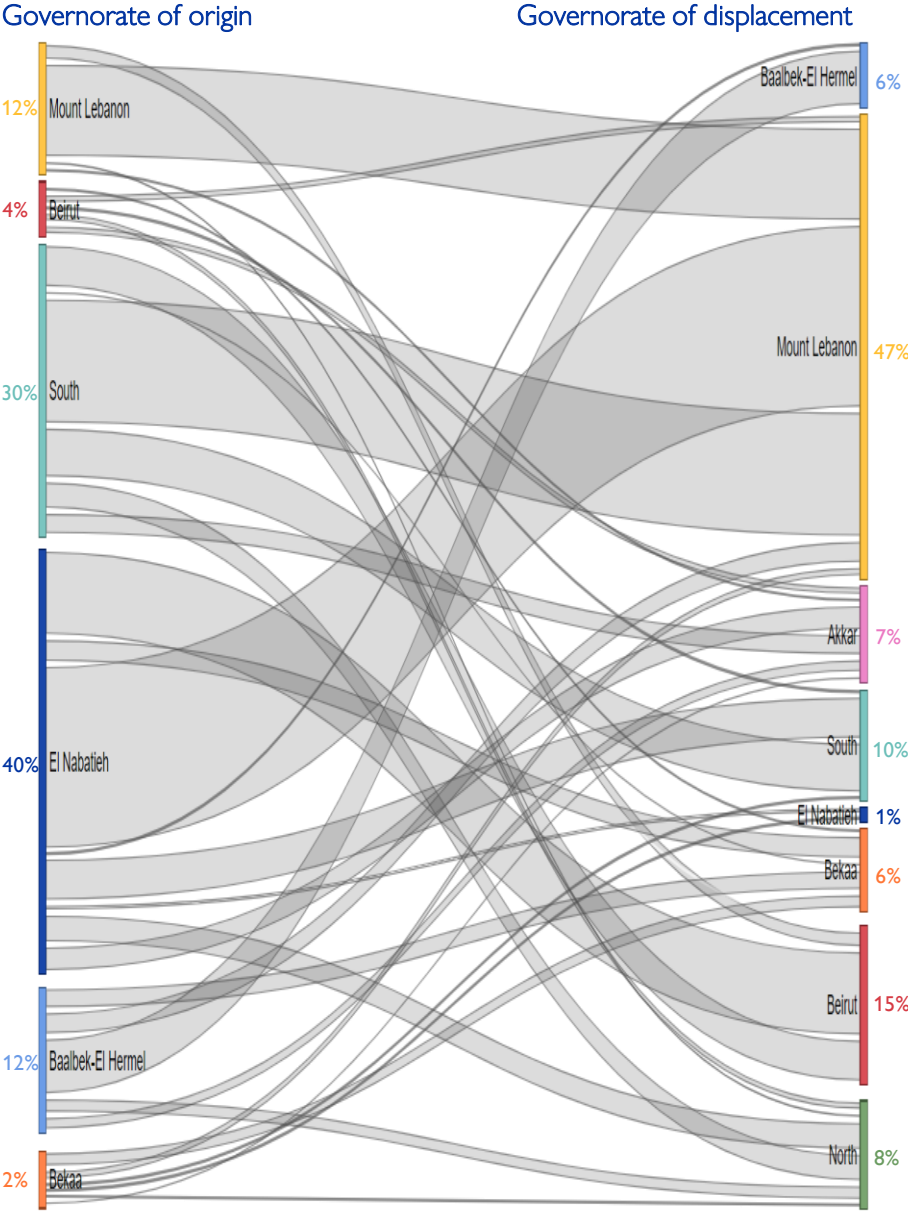
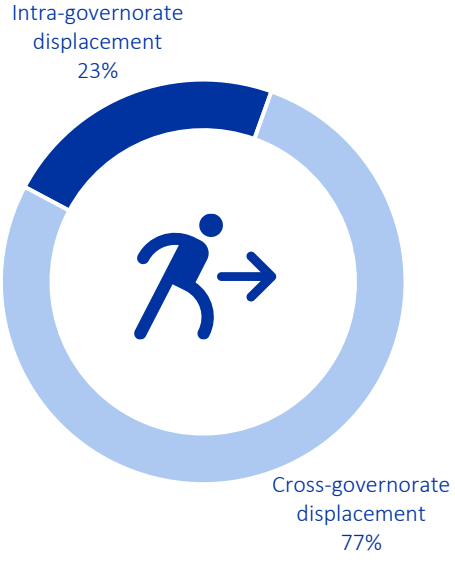
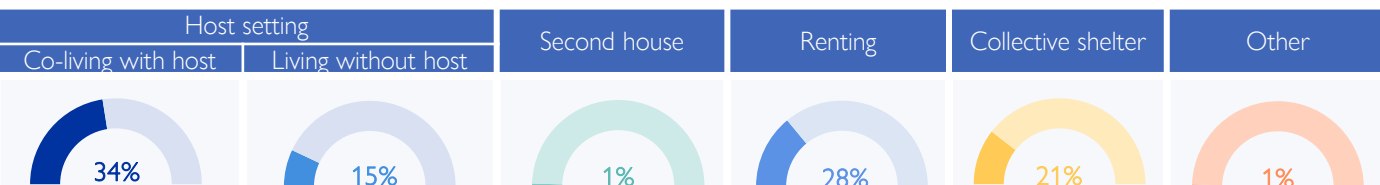


Chart 3: Displacement trends



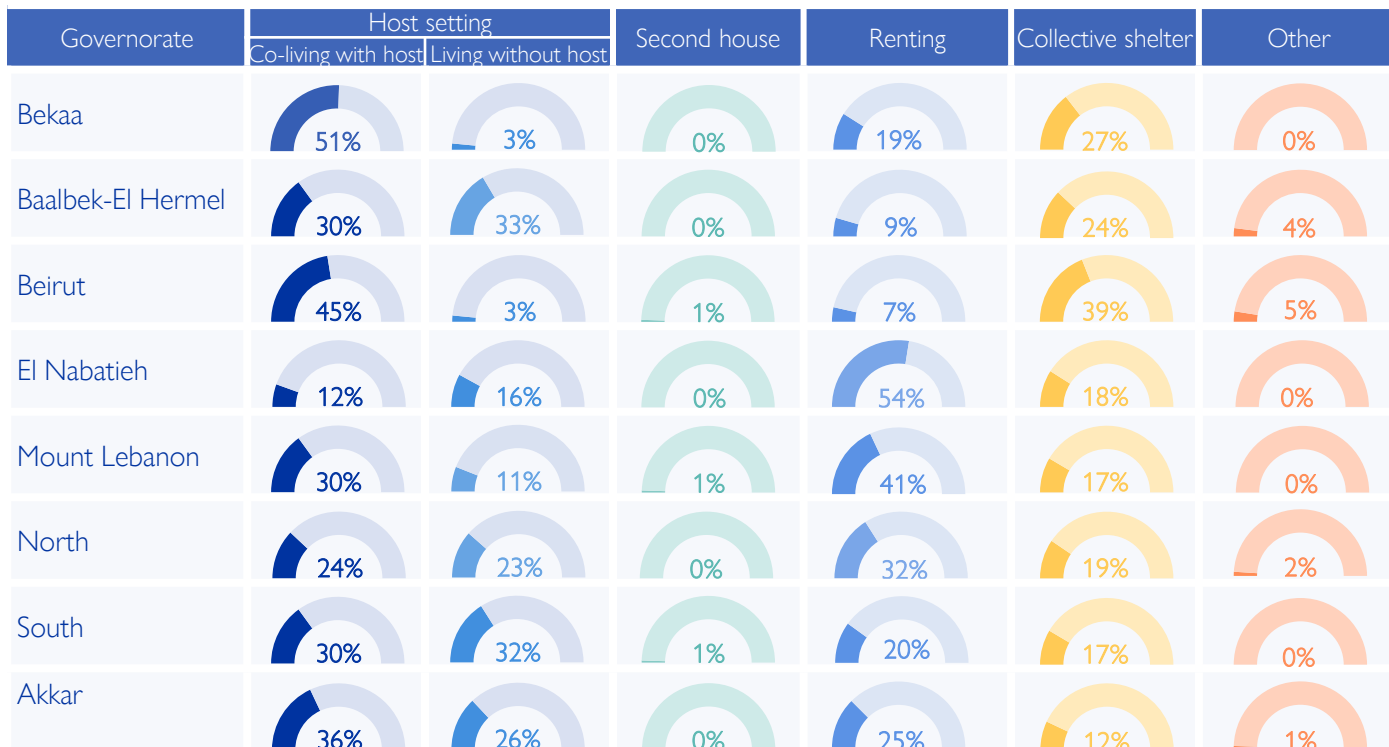
Overall, 77% of the displacement has occurred outside the boundaries of the IDPs' governorate of origin. While 40% (354,800) of the IDPs originate from El Nabatieh, of this population 99% fled to locations outside the boundaries of the governorate. Similarly, in the South governorate, where 30% (264,028) of IDPs originated, 78% of these IDPs chose to move outside the boundaries of the governorate. However, in Mount Lebanon governorate, where 12% (112,392) of IDPs originated, 76% of these IDPs chose to move internally within the boundaries of the governorate.

IDPs distribution by shelter type – By Governorate



Around 49% of IDPs are currently living in host settings, around 21% are housed in 1,018 collective shelters, while 28% have opted for rental housing. Another 1% have relocated to their secondary residences. Meanwhile, 1% are categorized under “other”, this includes unfinished buildings, tents, parks, on the streets, or self-settled sites.

Of the 49% in host settings, 296,946 are co-living with non-internally displaced families, while 131,668 reside separately. Notably, 64% of the 428,614 individuals in host settings are living in overcrowded conditions according to the perception of IOM DTM key informants.



Displacement demographics

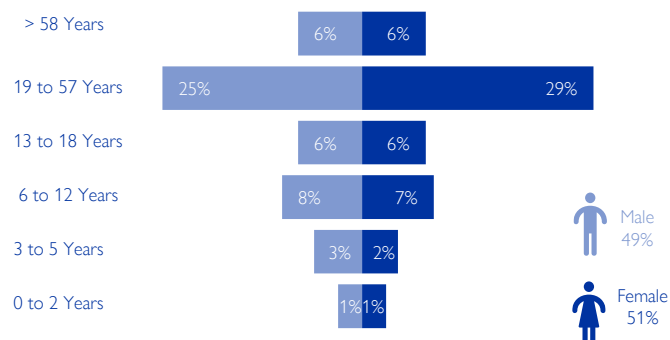


Chart 4: Displacement demographics

Individuals under 18 years old comprise 34% of IDPs, while female adults account for 35% and male adults make up 31%.

Note: These figures represent sample data of 2 households per location provided by key informants and do not reflect the entire IDP population in each area.

Methodology

The objective of the Mobility Snapshot is to support the humanitarian community in preparedness and response planning. Multi-layered data is routinely captured through Rounds using a suite of methodological tools designed to track and monitor displacement. These tools are in line with the [DTM Global Methodological Framework](#).

Data is collected nationwide through a combination of face-to-face and remote data collection methods, utilizing a network of over 50 enumerators and 1,500 key informants. These key informants consist of government officials, mukhtars, community representatives, and neighborhood focal points.

The following citation is required when using any data and information included in this information product: "International Organization for Migration (IOM), November 2024. DTM Mobility Snapshot, Round 63 IOM, Lebanon". For more information on terms and conditions of DTM reports and information products, please refer to <https://dtm.iom.int/terms-and-conditions>.