

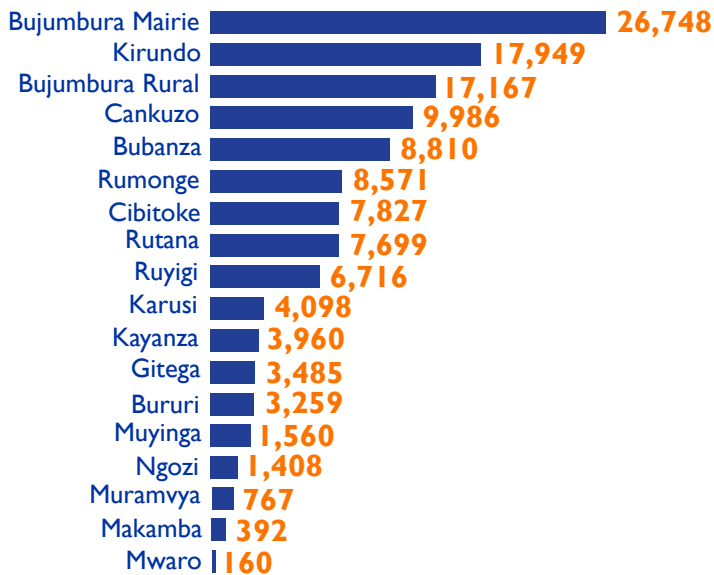


Publication: March 2019

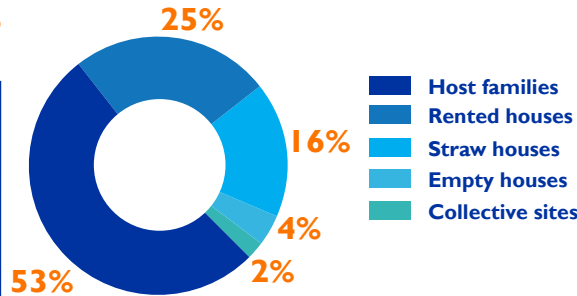
**130,562 IDPs\***  
**28,927 Displaced Households**

\*Internally Displaced Persons

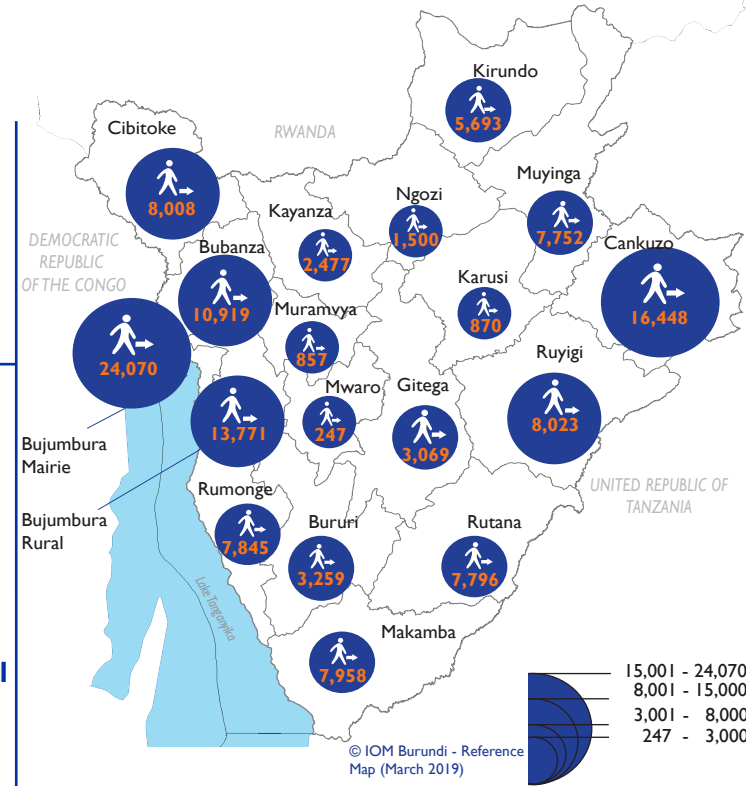
**PROVINCES OF ORIGIN**



**ACCOMMODATION TYPES**



**PRESENCE OF IDPs BY PROVINCE**

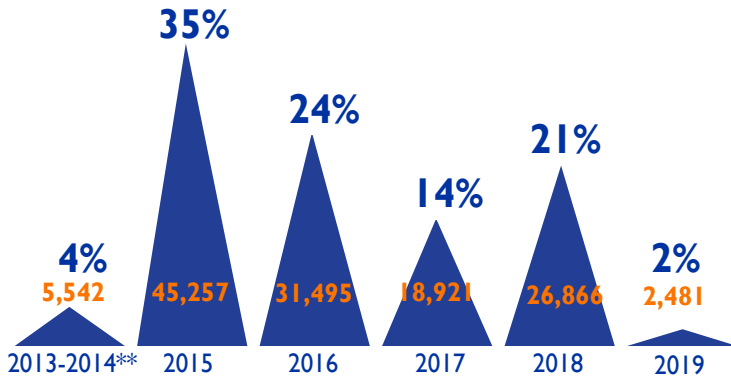


**DISPLACEMENT REASONS\***



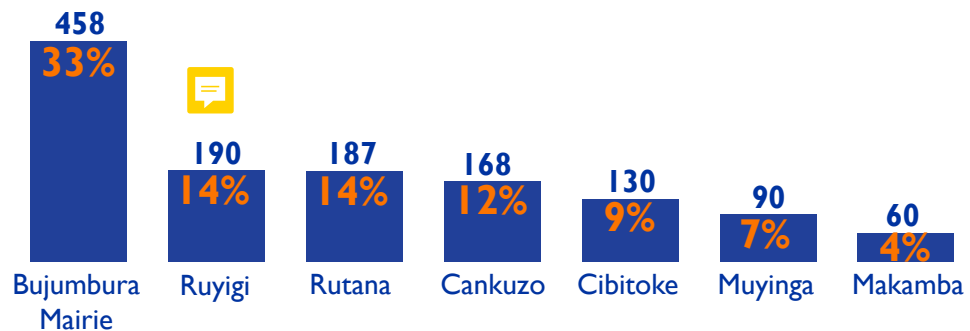
\*These percentages refer to data for IDPs displaced since 2015

**PERIODS OF DISPLACEMENT\***



\* Currently displaced IDPs  
\*\* Number of IDPs for 2013-2014 are taken from December 2018 data

**NATURAL DISASTERS DISPLACEMENTS BY PROVINCE\***



\*January 2019 displacement in provinces where at least 60 persons were displaced



**INTERNATIONAL ORGANIZATION FOR MIGRATION**

DTMBurundi@iom.int - www.displacement.iom.int/burundi

For any information extracted from this document, whether quoted, paraphrased or used in any way, the source must be mentioned as follows:

"Source: International Organization for Migration [February 2019], Displacement Tracking Matrix (DTM)".

