

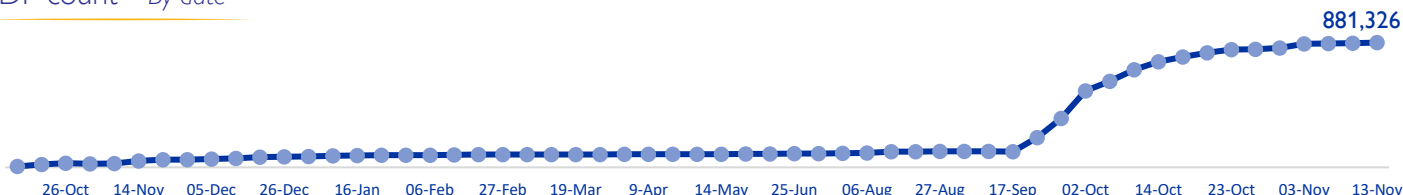
MOBILITY SNAPSHOT – Round 62

Report Production Date: 14 November 2024 | Data collected up till 4 pm on 13 November 2024

Overview

The International Organization for Migration (IOM) conducts daily monitoring of population movements to support preparedness and response efforts. This work is carried out in partnership with the Disaster Risk Management Unit, technically supported by the United Nations Development Programme, to triangulate and verify data from IOM’s mobility tracking exercise and the Lebanese Red Cross household registration exercise.

IDP count – By date



IDPs by district of arrival and district of origin



881,326 (52% female and 48% male)
Total displaced individuals



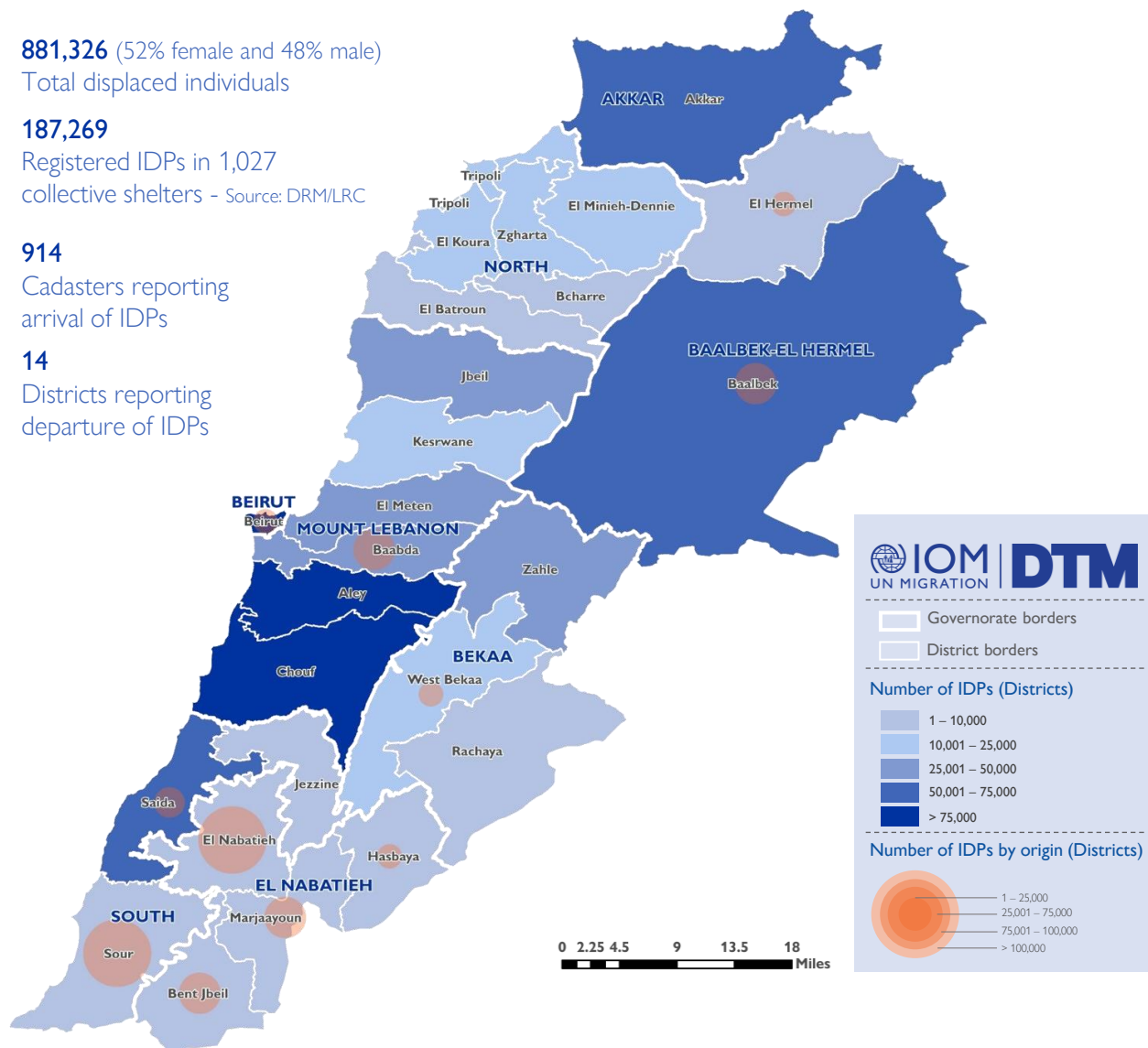
187,269
Registered IDPs in 1,027
collective shelters - Source: DRM/LRC



914
Cadasters reporting
arrival of IDPs



14
Districts reporting
departure of IDPs



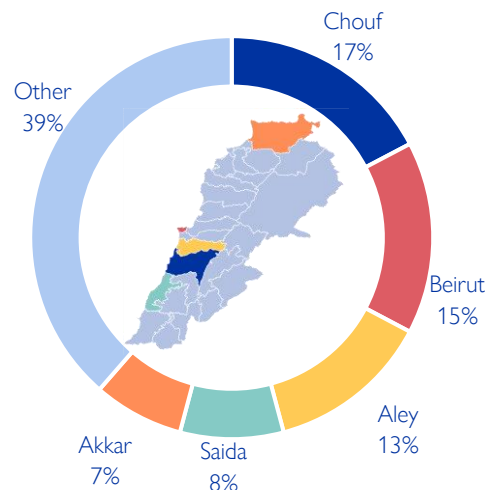
This map is for illustration purposes only. Names and boundaries on this map do not imply official endorsement or acceptance by IOM.

*DRM/LRC conducts household level registration for IDPs to inform direct assistance. This complements IOMs mobility tracking which captures an estimate of the total IDP population to inform national preparedness and response planning, as well as resource mobilisation.

Displacement within Lebanon – By district of arrival

Governorate	District	# of Cadasters	IDPs
Mount Lebanon	Chouf	84	152,387
Beirut	Beirut	12	136,078
Mount Lebanon	Aley	61	115,568
South	Saida	23	73,152
Akkar	Akkar	134	64,030
Baalbek-El Hermel	Baalbek	24	51,691
Mount Lebanon	El Meten	77	49,302
Mount Lebanon	Jbeil	66	42,997
Bekaa	Zahle	39	31,633
Mount Lebanon	Baabda	47	28,612
Mount Lebanon	Kesrwane	54	22,198
North	El Minieh-Dennie	45	20,395
Bekaa	West Bekaa	25	17,566
North	Tripoli	13	15,653
North	Zgharta	34	14,542
North	El Koura	40	12,851
South	Sour	1	8,216
South	Jezzine	32	7,773
North	El Batroun	51	6,913
Bekaa	Rachaya	19	4,067
El Nabatieh	Hasbaya	11	2,787
North	Bcharre	11	1,409
El Nabatieh	Bent Jbeil	1	613
Baalbek-El Hermel	El Hermel	1	450
El Nabatieh	El Nabatieh	7	256
El Nabatieh	Marjaayoun	2	187
Total		914	881,326

Chart 1: IDPs distribution by district of arrival

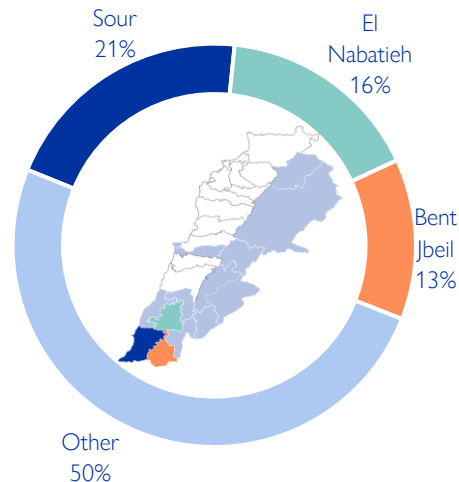


As of 13 November, Lebanon has recorded 881,326 internally displaced persons (IDPs), showing around 0.3% increase since 10 November. IDPs have sought safety in 914 cadasters throughout Lebanon. Displacement has been observed in all 26 districts across all eight governorates. 61% of the IDPs are in five districts out of the total 26 districts hosting IDPs—specifically, Chouf, Beirut, Aley, Saida, and Akkar.

Displacement within Lebanon – By district of departure

Governorate	District	IDPs
South	Sour	180,739
El Nabatieh	El Nabatieh	144,933
El Nabatieh	Bent Jbeil	113,604
Mount Lebanon	Baabda	108,203
El Nabatieh	Marjaayoun	89,242
Baalbek-El Hermel	Baalbek	88,150
South	Saida	67,415
Beirut	Beirut	29,744
Baalbek-El Hermel	El Hermel	24,415
Bekaa	West Bekaa	16,386
El Nabatieh	Hasbaya	12,925
Bekaa	Zahle	3,232
South	Jezzine	1,271
Bekaa	Rachaya	1,067
Total		881,326

Chart 2: IDPs distribution by district of departure



The majority of IDPs (50%) originate from three districts. These three districts span along the Southern border of Lebanon. Specifically, 21% are from Sour, 16% are from El Nabatieh, and 13% are from Bent Jbeil. The remaining 50% originate from 11 different districts.

New displacement within Lebanon – By district of arrival

Governorate	District	# of Cadasters	IDPs
Akkar	Akkar	17	2,160
Beirut	Beirut	1	1,900
Mount Lebanon	Jbeil	5	1,450
Bekaa	Zahle	2	550
Mount Lebanon	El Meten	11	538
Mount Lebanon	Aley	7	479
Baalbek-El Hermel	Baalbek	3	415
South	Saida	4	360
Mount Lebanon	Chouf	7	234
North	El Koura	4	225
North	El Minieh-Dennie	3	178
Mount Lebanon	Kesrwane	4	129
North	Tripoli	2	120
Mount Lebanon	Baabda	4	102
South	Sour	1	50
South	Jezzine	3	33
El Nabatieh	Hasbaya	3	26
North	El Batroun	2	15
Bekaa	West Bekaa	1	14
El Nabatieh	El Nabatieh	2	12
North	Zgharta	1	8
Total		87	8,998

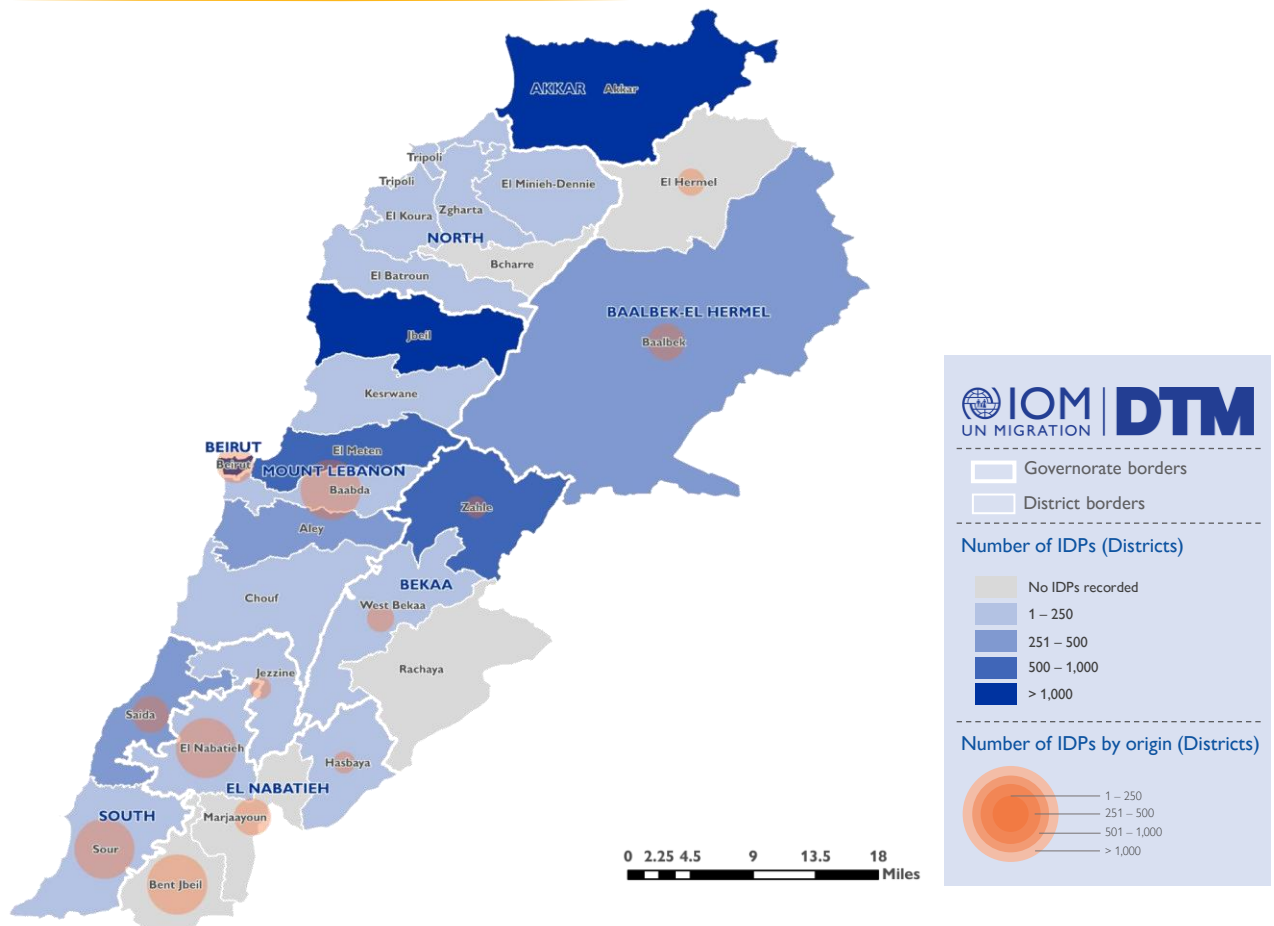
Since 10 November, there have been 8,998 new displacements. These individuals might be experiencing displacement for the first time or undergoing secondary movement.

The majority of newly displaced individuals come from Sour (18%), El Nabatieh (16%), Baabda (14%), Bent Jbeil (14%), and Marjaayoun (8%) districts. The remaining 30% relocated from Baalbek, Beirut, Saida, West Bekaa, El Hermel, Hasbaya, Zahle, and Jezzine districts.

Over the past week, the top five destinations (districts) for newly displaced individuals were Akkar (24%), Beirut (21%), Jbeil (16%), Zahle (6%), and El Meten (6%).

The increase in total number of IDPs may not always align with the number of new arrivals within a specific period. This difference often occurs when Key Informants (KIs) report cumulative totals that include previously uncounted IDPs.

Newly arrived IDPs by cadaster of arrival and district of origin



This map is for illustration purposes only. Names and boundaries on this map do not imply official endorsement or acceptance by IOM.

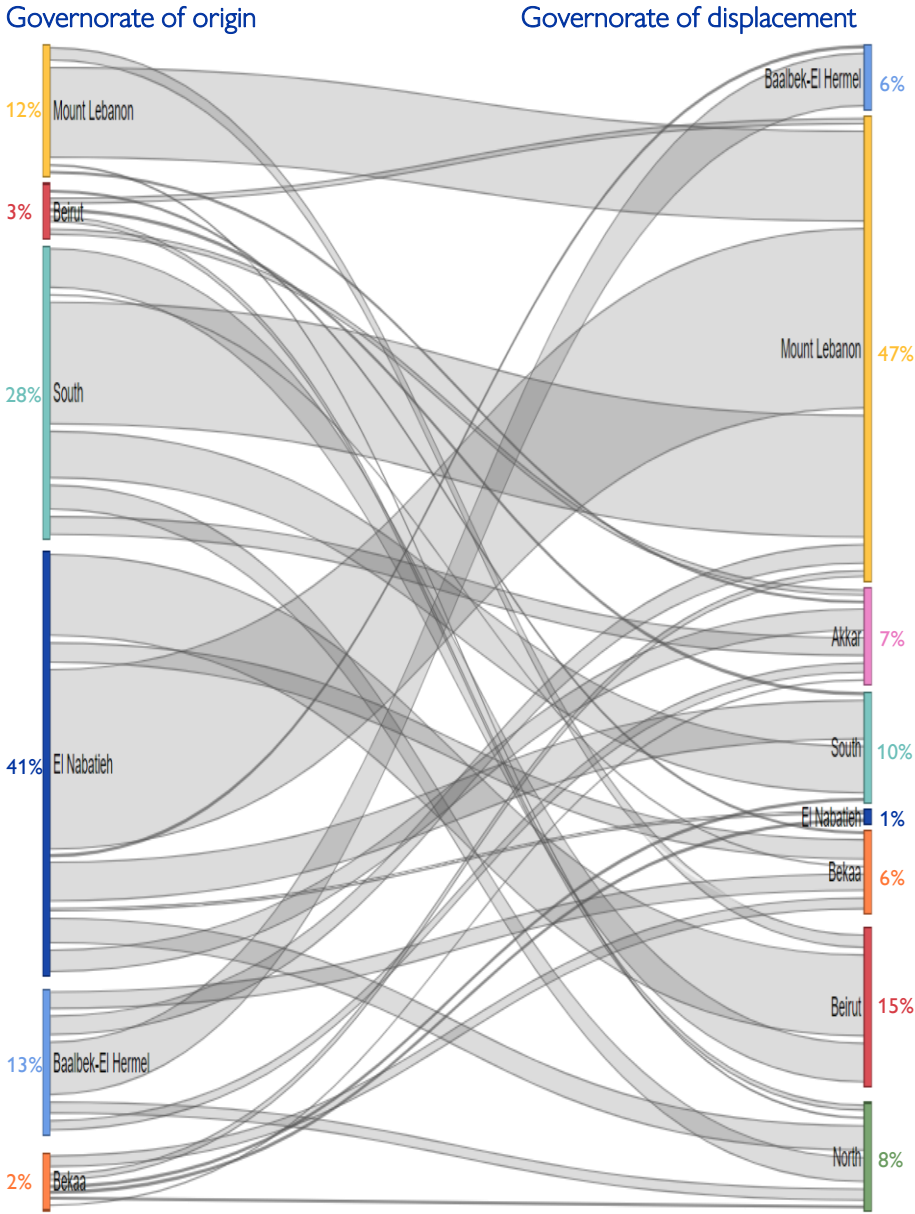
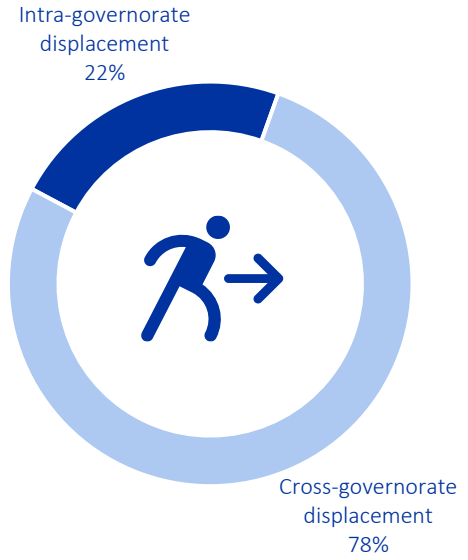
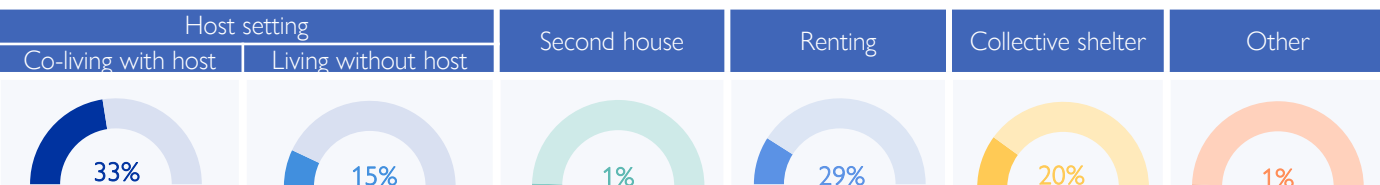


Chart 3: Displacement trends



Overall, 78% of the displacement has occurred outside the boundaries of the IDPs' governorate of origin. While 41% (360,704) of the IDPs originate from El Nabatieh, of this population 99% fled to locations outside the boundaries of the governorate. Similarly, in the South governorate, where 28% (249,925) of IDPs originated, 80% of these IDPs chose to move outside the boundaries of the governorate. However, in Mount Lebanon governorate, where 12% (108,203) of IDPs originated, 78% of these IDPs chose to move internally within the boundaries of the governorate.

IDPs distribution by shelter type – By Governorate



Around 48% of IDPs are currently living in host settings, around 21% are housed in 1,017 collective shelters, while 29% have opted for rental housing. Another 1% have relocated to their secondary residences. Meanwhile, 1% are categorized under “other”, this includes unfinished buildings, tents, parks, on the streets, or self-settled sites.

Of the 48% in host settings, 291,751 are co-living with non-internally displaced families, while 132,144 reside separately. Notably, 64% of the 423,895 individuals in host settings are living in overcrowded conditions according to the perception of IOM DTM key informants.

Governorate	Host setting		Second house	Renting	Collective shelter	Other
	Co-living with host	Living without host				
Bekaa	51%	3%	0%	18%	28%	0%
Baalbek-El Hermel	26%	35%	0%	11%	24%	4%
Beirut	45%	4%	1%	7%	38%	5%
El Nabatieh	11%	16%	0%	55%	18%	0%
Mount Lebanon	30%	11%	1%	40%	18%	0%
North	24%	21%	0%	34%	19%	2%
South	28%	34%	1%	21%	16%	0%
Akkar	36%	26%	0%	25%	12%	1%

Displacement demographics

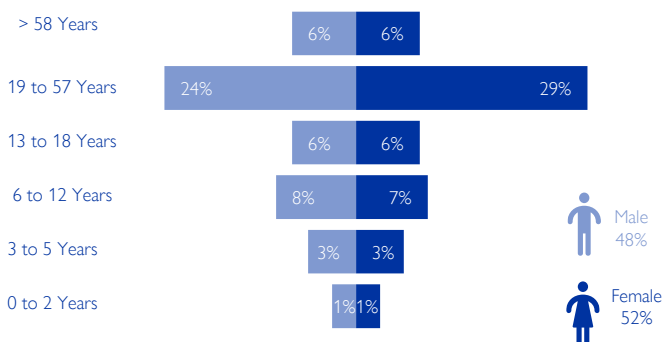


Chart 4: Displacement demographics – Based on Round 57

35% of IDPs are children (< 18 years), while 35% are female adults and 30% are male adults.

Note: These figures represent sample data of 2 households per location provided by key informants and do not reflect the entire IDP population in each area.

Methodology

The objective of the Mobility Snapshot is to support the humanitarian community in preparedness and response planning. Multi-layered data is routinely captured through Rounds using a suite of methodological tools designed to track and monitor displacement. These tools are in line with the [DTM Global Methodological Framework](#).

Data is collected nationwide through a combination of face-to-face and remote data collection methods, utilizing a network of over 50 enumerators and 1,500 key informants. These key informants consist of government officials, mukhtars, community representatives, and neighborhood focal points.

The following citation is required when using any data and information included in this information product: "International Organization for Migration (IOM), November 2024. DTM Mobility Snapshot, Round 62 IOM, Lebanon". For more information on terms and conditions of DTM reports and information products, please refer to <https://dtm.iom.int/terms-and-conditions>.