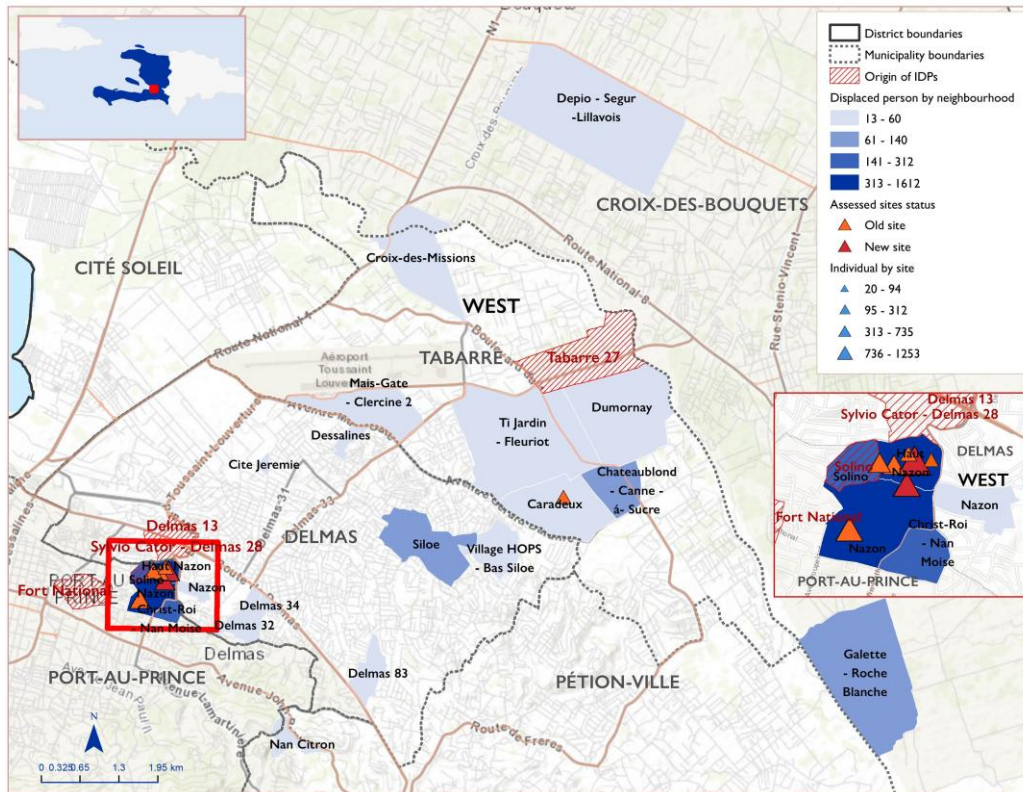


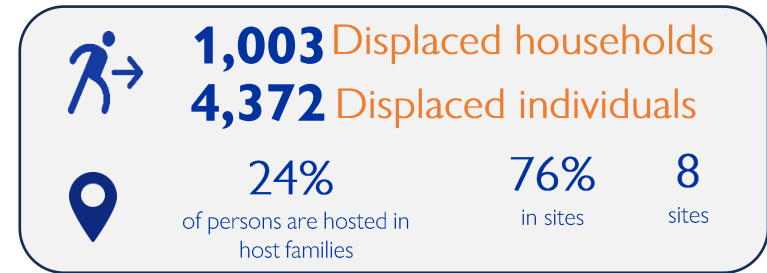
This information was collected following the armed violence that have occurred since 11 November 2024 in the Metropolitan Area of Port-au-Prince, particularly in the municipalities of Delmas (Delmas 13 and Delmas 28 neighborhoods), Tabarre (Tabarre 27 neighborhood) and Port-au-Prince (Solino and Fort National neighborhoods). A total of 4,372 people were displaced as a result of these violence, including 3,586 in Port-au-Prince, 488 in Tabarre and 298 in Delmas. The majority of displaced people (76%), or 3,326 individuals, took refuge in 8 sites, including 6 that already existed before these incidents and 2 that were created because of this situation. The rest of the people (24%) found refuge with host families. It should be noted that displacements were continuing at the time of writing this report and updates will be published. Furthermore, in many neighborhoods, key informants indicated that people were unable to flee due to the intensity of violence and barricades.

Origins and host locations of displaced persons

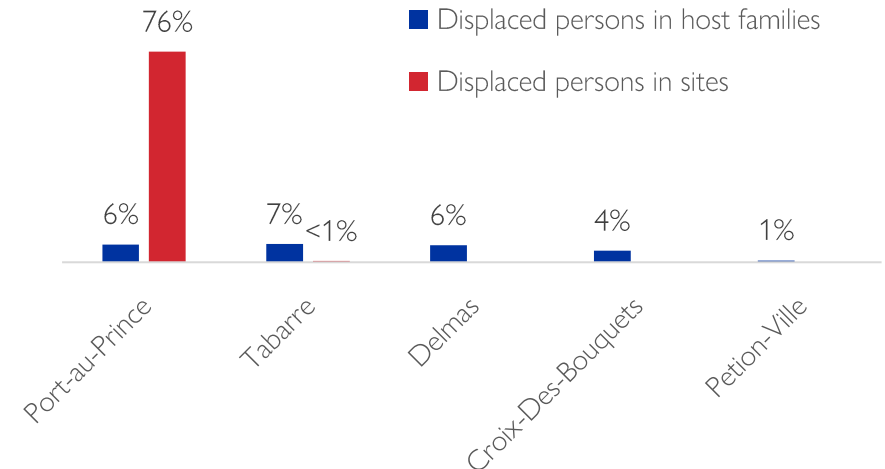


This map is for illustration purposes only. The depiction and use of boundaries, geographic names and related data shown on maps and included in this report are not warranted to be error free nor do they imply judgment on the legal status of any territory, or any endorsement or acceptance of such boundaries by IOM.

Demography



Municipalities hosting displaced populations



1. Displacement following violence in Solino and Fort National (Municipality of Port-Au-Prince)

797 Displaced households **3,586** Displaced individuals

1.a. Sites hosting displaced persons affected by these incidents

Department	Municipality	Municipality section	Neighborhood	Site name	Status of the site	Households newly displaced following these incidents	Individuals newly displaced following these incidents	Households present on the site before these incidents	Individuals present on the site before these incidents	Total of households on the site	Total of individuals on the site
West	Port-au-Prince	1re Section Turgeau	Haut Nazon	Eglise Armée du christ d'Haïti	Created following these incidents	257	1,253	0	0	257	1,253
West	Port-au-Prince	1re Section Turgeau	Nazon	Collège chrétien d'Haïti secondaire	Already existing before these incidents	200	735	80	400	280	1,135
West	Port-au-Prince	1re Section Turgeau	Nazon	Eglise pasteur Benitho (Mache Cokiyo)	Created following these incidents	108	647	0	0	108	647
West	Port-au-Prince	1re Section Turgeau	Solino	Eglise baptiste union des chrétiens	Already existing before these incidents	89	312	211	1,060	300	1,372
West	Port-au-Prince	1re Section Turgeau	Haut Nazon	Eglise Tabernacle de Sion	Already existing before these incidents	50	227	200	1,000	250	1,227
West	Port-au-Prince	1re Section Turgeau	Haut Nazon	Morne de prière Solino #1	Already existing before these incidents	27	94	173	845	200	939
West	Port-au-Prince	1re Section Turgeau	Haut Nazon	Morne de prière Solino #2	Already existing before these incidents	10	38	180	637	190	675
Total of persons displaced in sites following these incidents						741	3,306				

1.b. Displaced individuals hosted by host families

Department	Municipality	Municipality section	Neighborhood	Households	Individuals
West	Port-au-Prince	1re Section Turgeau	Christ-Roi - Nan Moïse	56	280
Total of persons displaced in host families following these incidents				56	280

2. Displacement following violence in Tabarre 27 (Municipality of Tabarre)

133 Displaced households **488** Displaced individuals

2.a. Sites hosting displaced persons affected by these incidents

Department	Municipality	Municipality section	Neighborhood	Site name	Status of the site	Households newly displaced following these incidents	Individuals newly displaced following these incidents	Households present on the site before these incidents	Individuals present on the site before these incidents	Total of households on the site	Total of individuals on the site
West	Tabarre	4e Section Bellevue	Caradeux	Lycée Jean Marie Vincent	Already existing before these incidents	7	20	58	174	65	194
Total of persons displaced in site following these incidents						7	20				

2.b. Displaced individuals hosted by host families

Department	Municipality	Municipality section	Neighborhood	Households	Individuals
West	Croix-Des-Bouquets	3e Section Petit Bois	Galette - Roche Blanche	35	140
West	Tabarre	4e Section Bellevue	Chateaublond - Canne a Sucre	26	105
West	Tabarre	3e Section Bellevue	Croix-des-Missions	15	48
West	Croix-Des-Bouquets	2e Section des Varreux	Depio-Segur-Lillavois	17	42
West	Tabarre	4e Section Bellevue	Caradeux	14	40
West	Tabarre	4e Section Bellevue	Dumornay	13	38
West	Tabarre	3e Section Bellevue	Mais-Gate - Clercine 2	10	35
West	Tabarre	4e Section Bellevue	Ti Jardin - Fleuriot	6	20
Total of persons displaced in host families following these incidents				136	468

3. Displacement following violence in Delmas 13 and 28 (Municipality of Delmas)

 **67** Displaced households **298** Displaced individuals

3.a. Displaced individuals hosted by host families

Department	Municipality	Municipality section	Neighborhood	Households	Individuals
West	Delmas	1re Section St Martin	Siloe	15	75
West	Delmas	1re Section St Martin	Delmas 32	10	50
West	Delmas	1re Section St Martin	Nazon	7	35
West	Delmas	1re Section St Martin	Delmas 33	8	32
West	Delmas	1re Section St Martin	Dessaline	8	30
West	Petion-Ville	3e Section Etang du Jonc	Nan Citron	7	28
West	Delmas	1re Section St Martin	Cité Jérémie	5	20
West	Delmas	1re Section St Martin	Delmas 83	4	15
West	Delmas	1re Section St Martin	Delmas 34	3	13
Total of persons displaced in host families following these incidents				67	298