

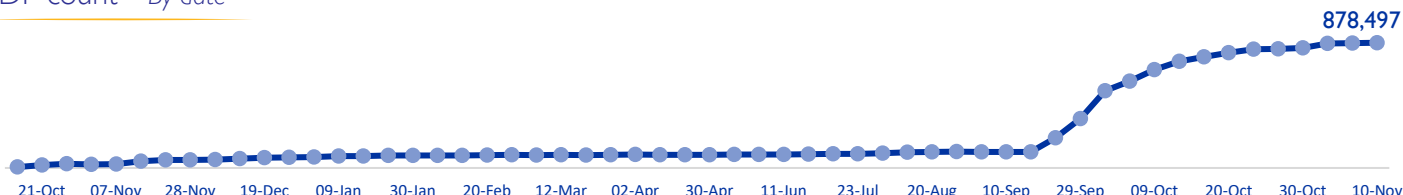
MOBILITY SNAPSHOT – Round 61

Report Production Date: 11 November 2024 | Data collected up till 4 pm on 10 November 2024

Overview

The International Organization for Migration (IOM) conducts daily monitoring of population movements to support preparedness and response efforts. This work is carried out in partnership with the Disaster Risk Management Unit, technically supported by the United Nations Development Programme, to triangulate and verify data from IOM's mobility tracking exercise and the Lebanese Red Cross household registration exercise.

IDP count – By date



IDPs by district of arrival and district of origin



878,497 (52% female and 48% male)
Total displaced individuals



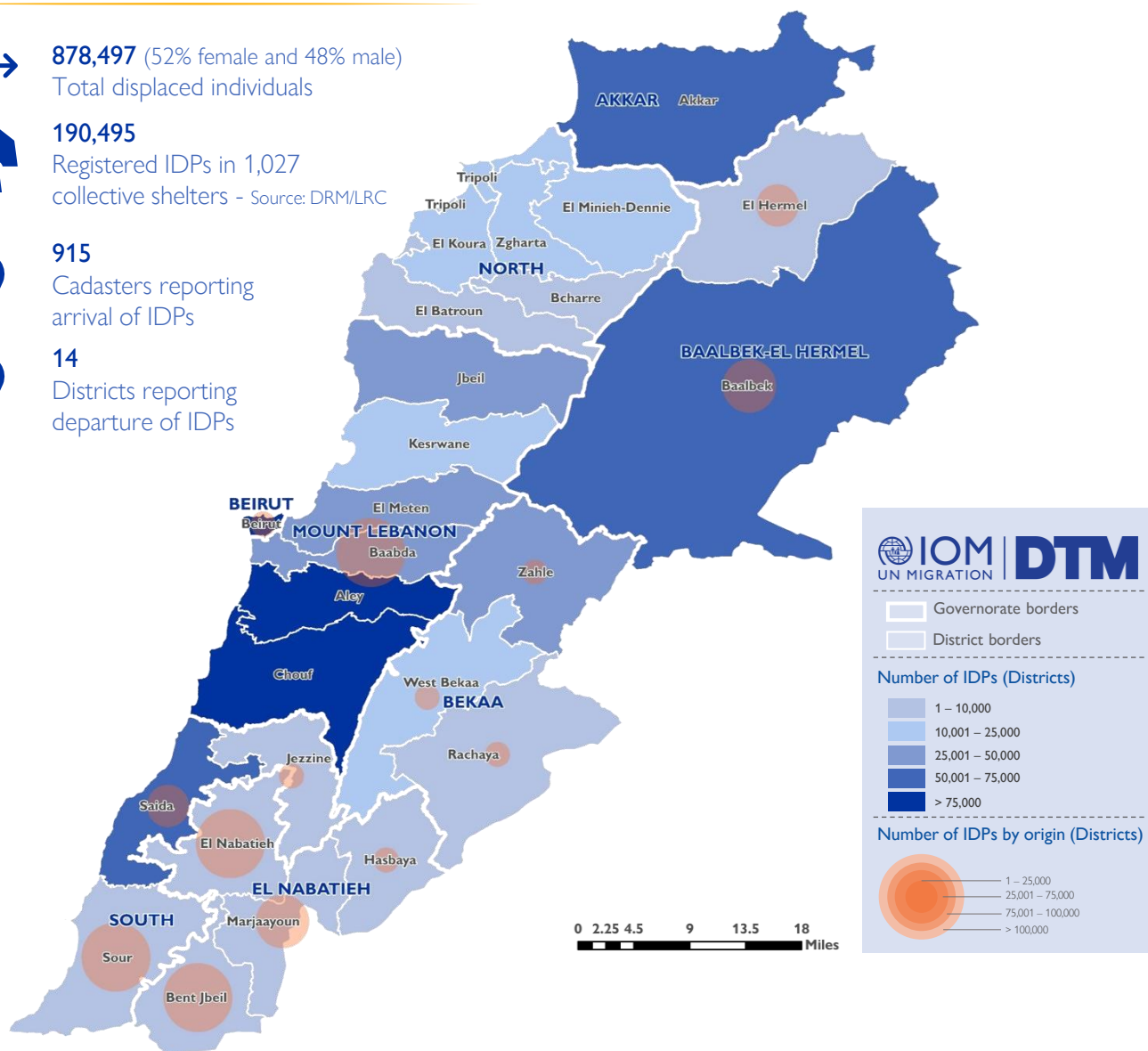
190,495
Registered IDPs in 1,027
collective shelters - Source: DRM/LRC



915
Cadasters reporting
arrival of IDPs



14
Districts reporting
departure of IDPs



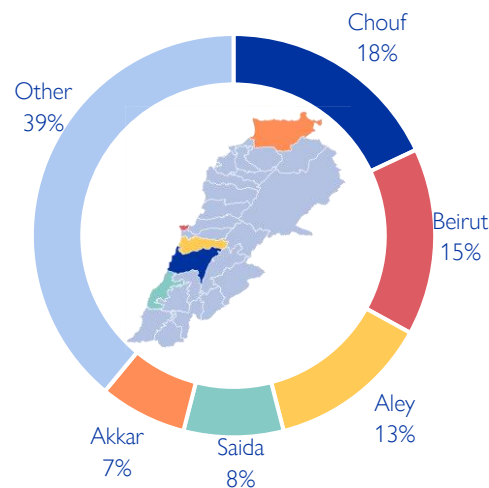
This map is for illustration purposes only. Names and boundaries on this map do not imply official endorsement or acceptance by IOM.

*DRM/LRC conducts household level registration for IDPs to inform direct assistance. This complements IOM's mobility tracking which captures an estimate of the total IDP population to inform national preparedness and response planning, as well as resource mobilisation.

Displacement within Lebanon – By district of arrival

Governorate	District	# of Cadasters	IDPs
Mount Lebanon	Chouf	84	160,324
Beirut	Beirut	12	132,635
Mount Lebanon	Aley	61	114,906
South	Saida	22	69,686
Akkar	Akkar	134	61,762
Baalbek-El Hermel	Baalbek	24	51,953
Mount Lebanon	El Meten	76	48,953
Mount Lebanon	Jbeil	67	40,982
Bekaa	Zahle	39	31,400
Mount Lebanon	Baabda	47	29,168
Mount Lebanon	Kesrwane	55	22,001
North	El Minieh-Dennie	45	20,532
Bekaa	West Bekaa	25	17,534
North	Tripoli	13	15,919
North	Zgharta	33	14,634
North	El Koura	40	12,820
South	Sour	1	8,140
South	Jezzine	32	8,003
North	El Batroun	51	6,901
Bekaa	Rachaya	19	4,186
El Nabatieh	Hasbaya	11	2,763
North	Bcharre	11	1,443
El Nabatieh	Bent Jbeil	2	663
El Nabatieh	El Nabatieh	7	544
Baalbek-El Hermel	El Hermel	1	450
El Nabatieh	Marjaayoun	3	195
Total		915	878,497

Chart 1: IDPs distribution by district of arrival

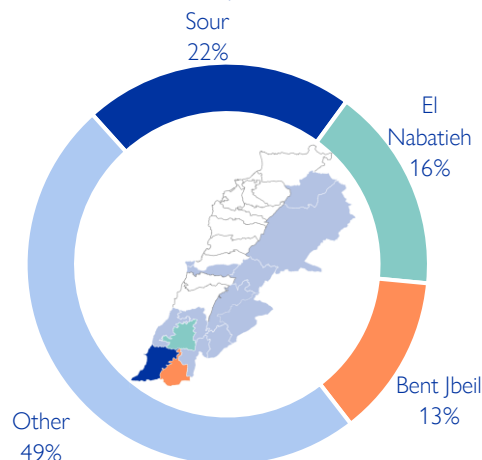


As of 10 November, Lebanon has recorded 878,497 internally displaced persons (IDPs), showing around 0.4% increase since 06 November. IDPs have sought safety in 915 cadasters throughout Lebanon. Displacement has been observed in all 26 districts across all eight governorates. 61% of the IDPs are in five districts out of the total 26 districts hosting IDPs—specifically, Chouf, Beirut, Aley, Saida, and Akkar.

Displacement within Lebanon – By district of departure

Governorate	District	IDPs
South	Sour	190,808
El Nabatieh	El Nabatieh	144,550
El Nabatieh	Bent Jbeil	114,250
Mount Lebanon	Baabda	105,231
El Nabatieh	Marjaayoun	95,189
Baalbek-El Hermel	Baalbek	86,387
South	Saida	58,211
Baalbek-El Hermel	El Hermel	26,832
Beirut	Beirut	21,175
Bekaa	West Bekaa	15,401
El Nabatieh	Hasbaya	12,120
Bekaa	Zahle	6,008
South	Jezzine	1,259
Bekaa	Rachaya	1,076
Total		878,497

Chart 2: IDPs distribution by district of departure



The majority of IDPs (51%) originate from three districts. These three districts span along the Southern border of Lebanon. Specifically, 22% are from Sour, 16% are from El Nabatieh, and 13% are from Bent Jbeil. The remaining 49% originate from 11 different districts.

New displacement within Lebanon – By district of arrival

Governorate	District	# of Cadasters	IDPs
Mount Lebanon	Chouf	9	4,982
Bekaa	Zahle	4	1,240
Akkar	Akkar	15	1,009
Mount Lebanon	Aley	5	467
South	Saida	6	455
Baalbek-El Hermel	Baalbek	3	415
Mount Lebanon	Jbeil	3	320
Mount Lebanon	El Meten	5	259
South	Sour	1	150
North	El Koura	2	125
North	El Batroun	3	51
Bekaa	Rachaya	2	43
South	Jezzine	4	37
Mount Lebanon	Kesrwane	1	20
El Nabatieh	Hasbaya	1	7
North	Tripoli	1	5
Total		65	9,585

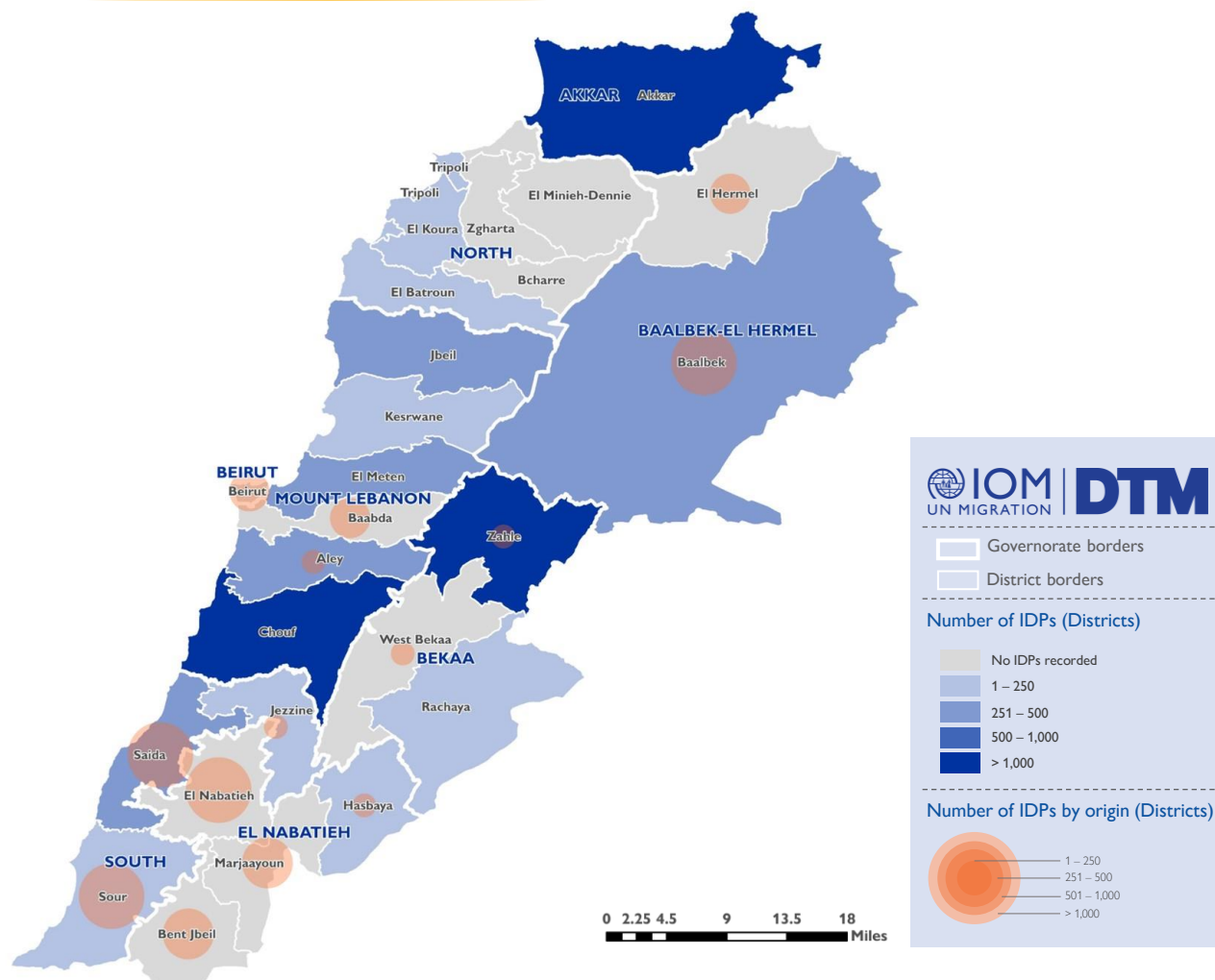
Since 06 November, there have been 9,585 new displacements. These individuals might be experiencing displacement for the first time or undergoing secondary movement.

The majority of newly displaced individuals come from Sour (26%), El Nabatieh (19%), Baalbek (15%), Saida (13%), and Marjaayoun (7%) districts. The remaining 19% relocated from Bent Jbeil, Baabda, Beirut, El Hermel, Zahle, Hasbaya, West Bekaa, Aley, and Jezzine.

Over the past week, the top five destinations (districts) for newly displaced individuals were Chouf (52%), Zahle (13%), Akkar (11%), Aley (5%), and Saida (5%).

The increase in total number of IDPs may not always align with the number of new arrivals within a specific period. This difference often occurs when Key Informants (KIs) report cumulative totals that include previously uncounted IDPs.

Newly arrived IDPs by cadaster of arrival and district of origin



This map is for illustration purposes only. Names and boundaries on this map do not imply official endorsement or acceptance by IOM.

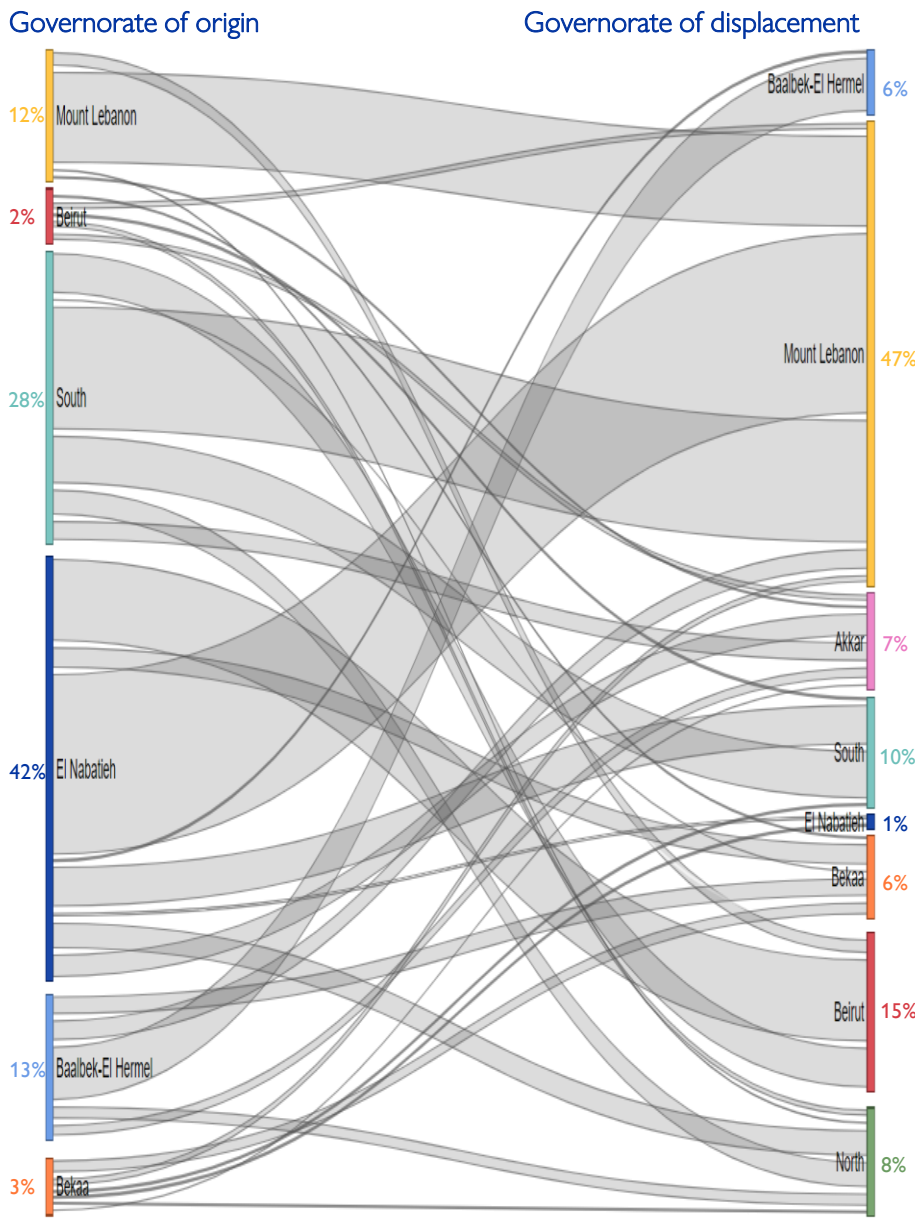
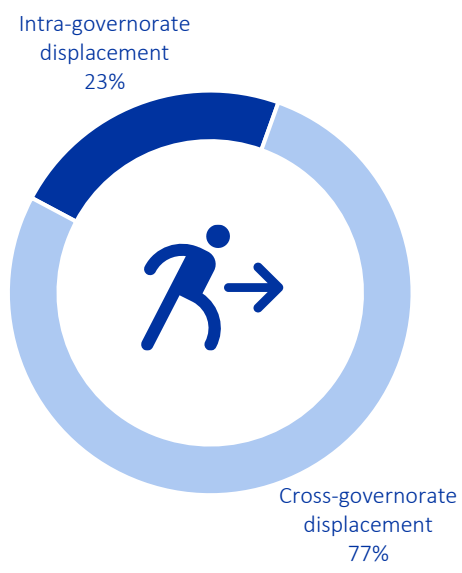
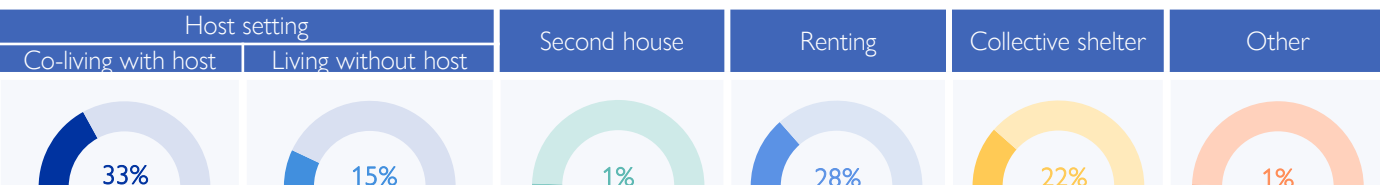


Chart 3: Displacement trends



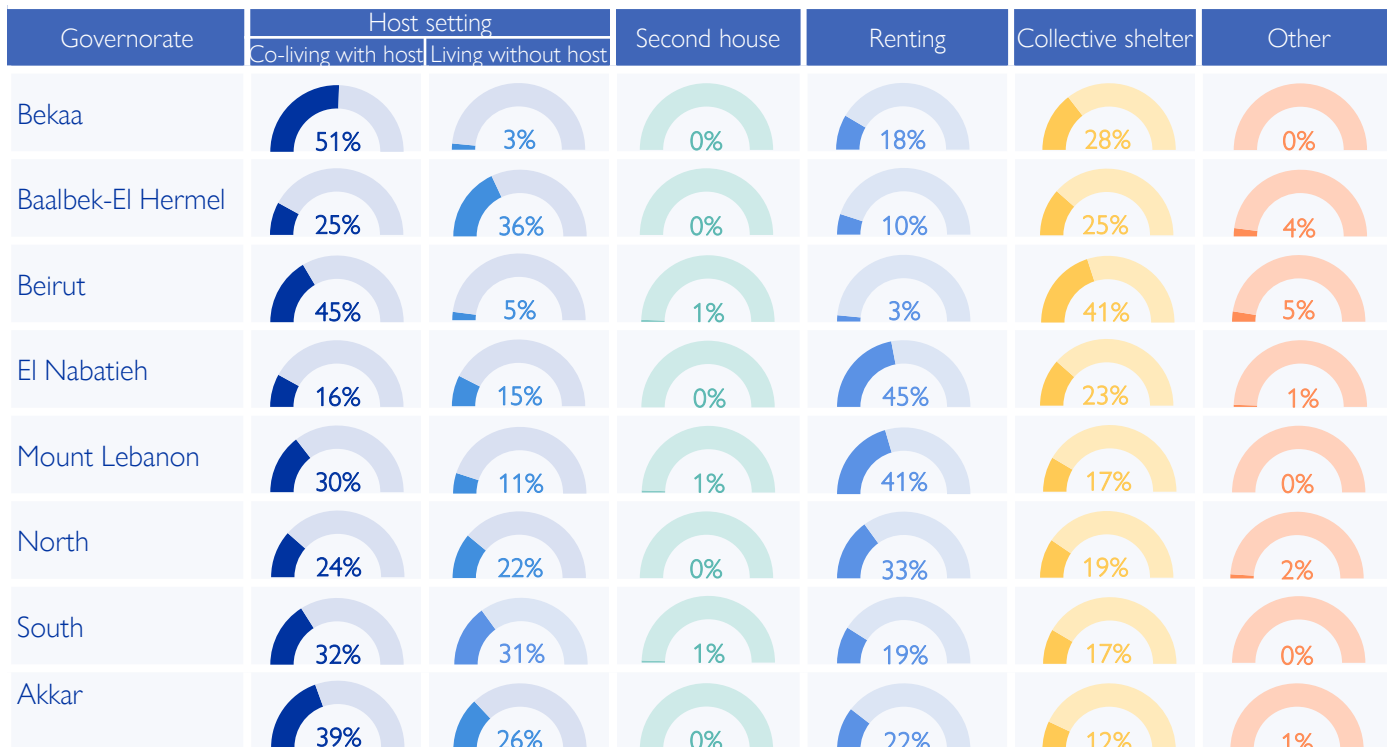
Overall, 77% of the displacement has occurred outside the boundaries of the IDPs' governorate of origin. While 42% (366,109) of the IDPs originate from El Nabatieh, of this population 99% fled to locations outside the boundaries of the governorate. Similarly, in the South governorate, where 28% (250,278) of IDPs originated, 81% of these IDPs chose to move outside the boundaries of the governorate. However, in Mount Lebanon governorate, where 12% (87,645) of IDPs originated, 84% of these IDPs chose to move internally within the boundaries of the governorate.

IDPs distribution by shelter type – By Governorate



Around 48% of IDPs are currently living in host settings, around 22% are housed in 1,027 collective shelters, while 28% have opted for rental housing. Another 1% have relocated to their secondary residences. Meanwhile, 1% are categorized under “other”, this includes unfinished buildings, tents, parks, on the streets, or self-settled sites.

Of the 48% in host settings, 294,753 are co-living with non-internally displaced families, while 131,175 reside separately. Notably, 64% of the 425,928 individuals in host settings are living in overcrowded conditions according to the perception of IOM DTM key informants.



Displacement demographics

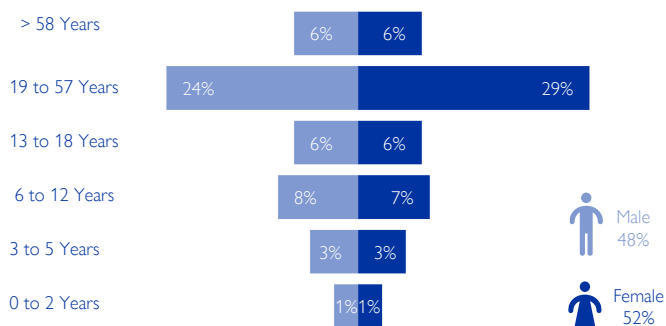


Chart 4: Displacement demographics – Based on Round 57

35% of IDPs are children (< 18 years), while 35% are female adults and 30% are male adults.

Note: These figures represent sample data of 2 households per location provided by key informants and do not reflect the entire IDP population in each area.

Methodology

The objective of the Mobility Snapshot is to support the humanitarian community in preparedness and response planning. Multi-layered data is routinely captured through Rounds using a suite of methodological tools designed to track and monitor displacement. These tools are in line with the [DTM Global Methodological Framework](#).

Data is collected nationwide through a combination of face-to-face and remote data collection methods, utilizing a network of over 50 enumerators and 1,500 key informants. These key informants consist of government officials, mukhtars, community representatives, and neighborhood focal points.

The following citation is required when using any data and information included in this information product: "International Organization for Migration (IOM), November 2024. DTM Mobility Snapshot, Round 61 IOM, Lebanon". For more information on terms and conditions of DTM reports and information products, please refer to <https://dtm.iom.int/terms-and-conditions>.