

DISPLACEMENT TRACKING MATRIX — NIGERIA EMERGENCY TRACKING TOOL (ETT)

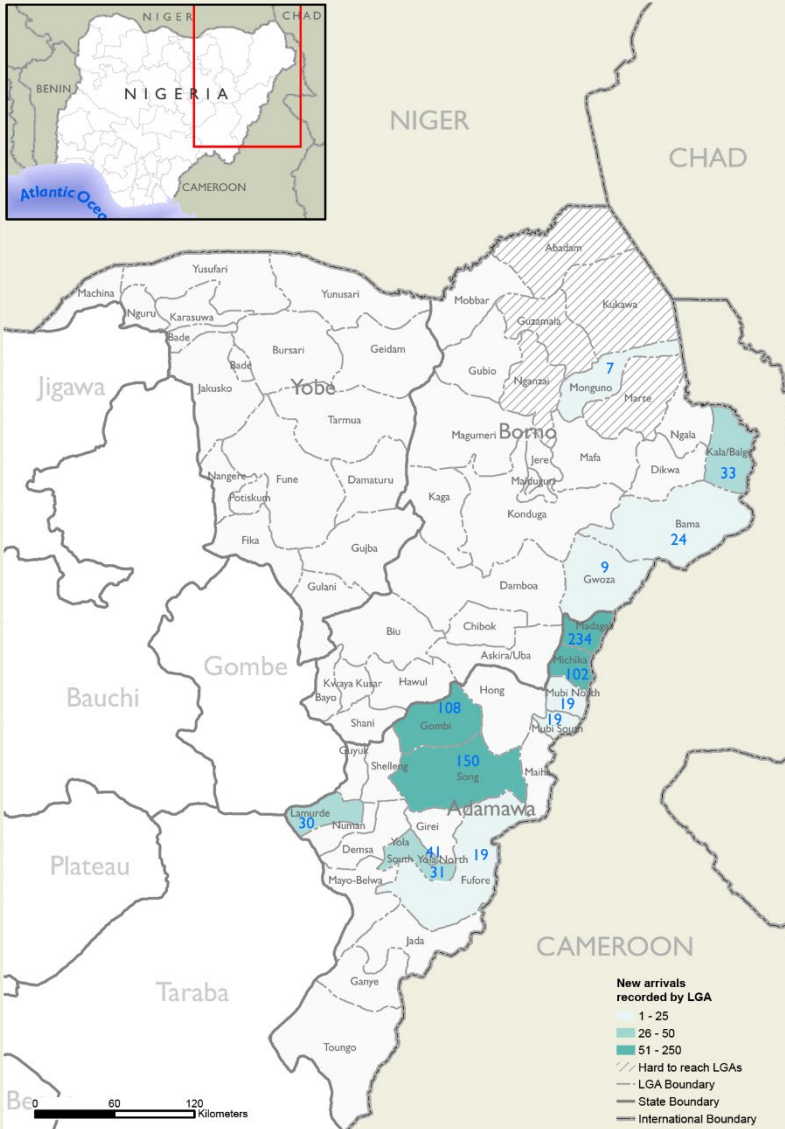
SUMMARY OF MOVEMENTS IN BORNO AND ADAMAWA STATES, 28 October – 3 November 2024

DASHBOARD: 404

DATA COLLECTION: Week 44, 2024

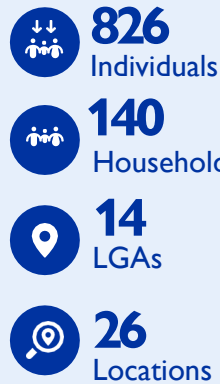
DATE OF PUBLICATION: 31 October 2024

OVERVIEW OF DISPLACEMENTS

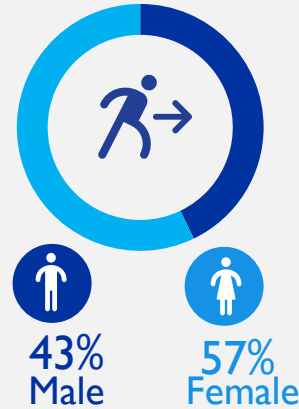


This map is for illustration purposes only. Names and boundaries on this map do not imply official endorsement or acceptance by IOM.

KEY FIGURES

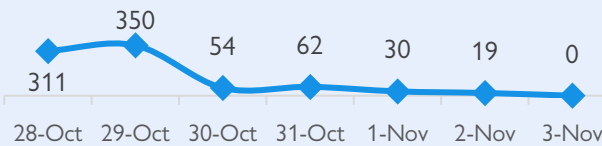


GENDER BREAKDOWN



DISPLACEMENT EVOLUTION

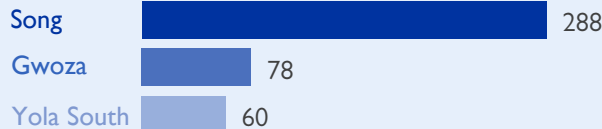
DATE OF MOVEMENTS
28 October – 3 November



TOP REPORTED NEEDS*



TOP AREAS OF ORIGIN



*Multiple-choice response

METHODOLOGY

The DTM Emergency Tracking Tool (ETT) is deployed to track and collect information on large and sudden population movements, provide frequent updates on the scale of displacement and quantify the affected population when needed. As a sub-component of the mobility tracking methodology in Nigeria, ETT utilizes direct observations and a broad network of key informants to capture the best estimates of the affected population per location, enabling targeted humanitarian response planning.

LIMITATIONS

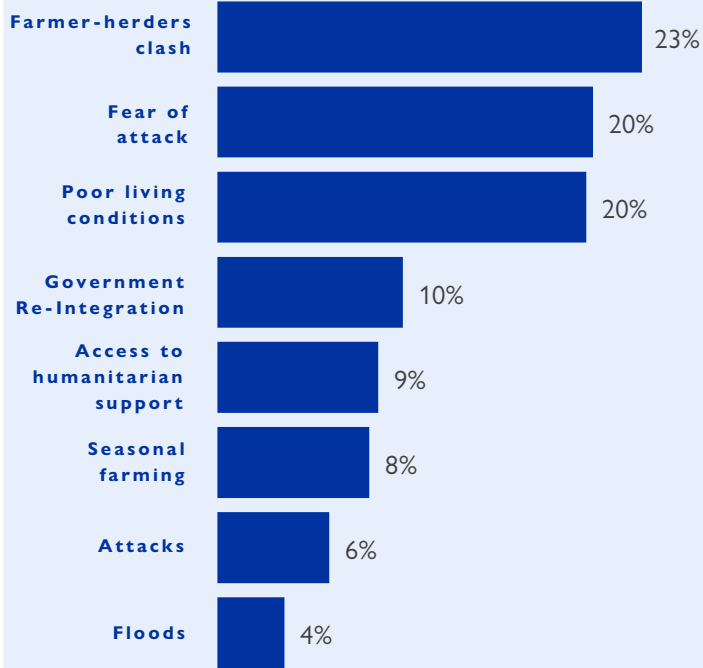
The ETT figures reported are not cumulative of all the affected persons thus far but rather provide a snapshot of the current displacement situation on the date indicated. The data and information reported on this dashboard are related solely to the movements caused by the triggers on page two between 28 October – 3 November 2024.

ALERT SUMMARY

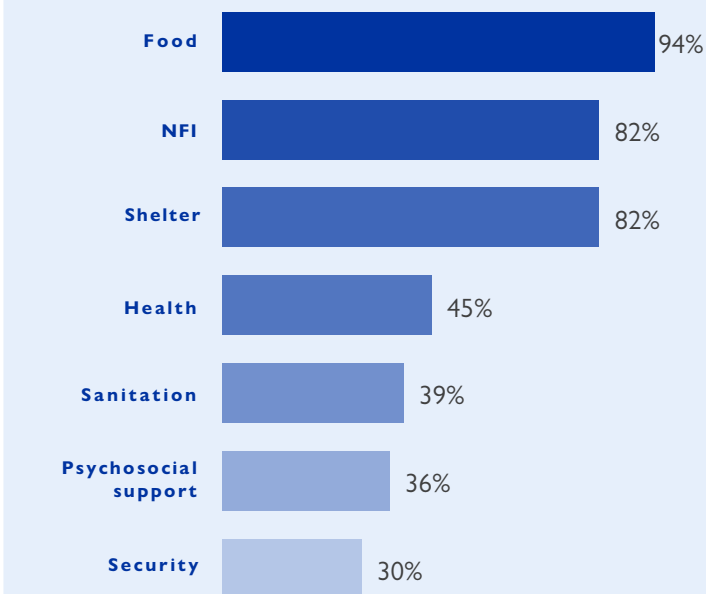
Between 28 October and 3 November 2024, a total of 826 new arrivals were recorded at locations in Adamawa and Borno states. The new arrivals were recorded at locations in Bama, Gwoza, Kala Balge and Monguno local government areas (LGAs) of the most conflict-affected Borno State, in Fufore, Gombi, Lamurde, Madagali, Michika, Mubi North, Mubi South, Song, Yola North and Yola South LGA of Adamawa State.

ETT assessments identified the following movement triggers: farmer-herders clash (190 individuals or 23%), fear of attack (168 individuals or 20%), poor living conditions (165 individuals or 20%), government re-integration (83 individuals or 10%), access to humanitarian support (72 individuals or 9%), seasonal farming (68 individuals or 8%), attacks (50 individuals or 6%) and flood (30 individuals or 4%).

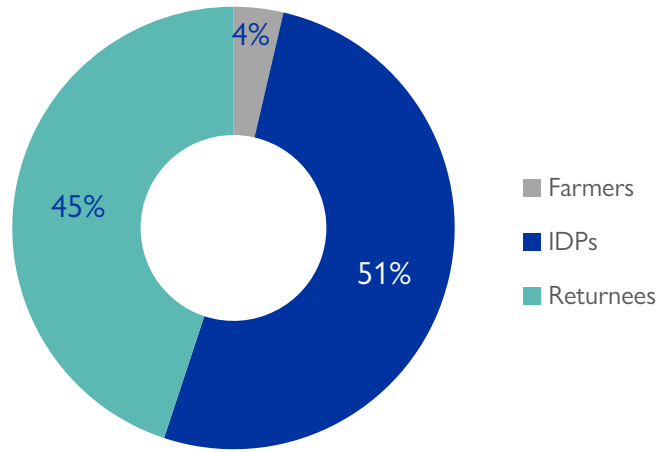
PERCENTAGE OF INDIVIDUALS BY MOVEMENT TRIGGER



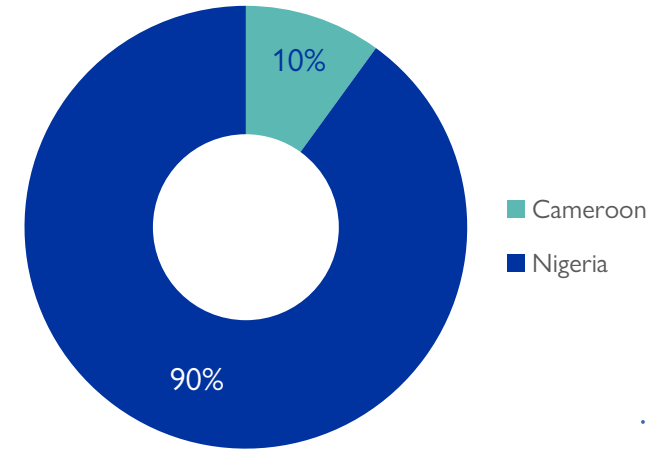
NEEDS EVOLUTION*



ARRIVING POPULATION



COUNTRY OF DEPARTURE OF THE POPULATION



NEW ARRIVALS SCREENING BY NUTRITION PARTNERS



89 MUAC

Children (6 – 59 months)
Screened for malnutrition.
Category of screened children.

Green: 74

Yellow: 13

Red: 2



MALNUTRITION SCREENING SUMMARY OF THE NEW ARRIVALS (CHILDREN 6 – 59 MONTHS)

Between 28 October and 3 November 2024, an exhaustive nutrition screening using Mid-Upper Arm Circumference (MUAC) and oedema for acute malnutrition was conducted by sector partners for 89 children aged 6-59 months. Of the 89 children screened, the MUAC reading indicated that two was recorded in the red category, 12 in the yellow category and 73 in the green category. No case of oedema was reported in the six LGAs assessed.

Among the 89 children screened, 62 arrived from neighbouring countries (62 in Mobbar LGA); of all the 62 children measured; 51 were in green, 11 were in yellow and none in red category. All children found with acute malnutrition have been admitted to the treatment programme.

LGA	MUAC Categories						Total
	Green (≥12.5cm)		Yellow (11.5cm – 12.5cm)		Red (<11.5cm)		
	Inaccessible	Accessible	Inaccessible	Accessible	Inaccessible	Accessible	
Bama	10	0	2	0	1	0	13
Gwoza	2	0	0	0	0	0	2
Kala Balge	0	7	0	0	0	1	8
Mobbar	0	51	0	11	0	0	62
Monguno	4	0	0	0	0	0	4
Total	16	58	2	11	1	1	89

Please note, the data presented above are not surveillance results and should be interpreted with caution.

■ Nourished

■ Moderate Acute Malnutrition (MAM)

■ Severe Acute Malnutrition (SAM)

*Multiple-choice response

DISPLACEMENT BREAKDOWN – all movements.

Arrival location			Movement location			Number of individuals		
State	LGA	Ward	State	LGA	Ward			
Adamawa	Fufore	Beti	Adamawa	Yola South	Adarawo	19		
	Gombi	Guyaku	Adamawa	Song	Dumne	108		
	Lamurde	Lafiya	Adamawa	Guyuk	Kola	30		
	Madagali	Madagali	Babel	Adamawa	Mubi South	Lamorde	25	
			Duhu/Shuwa		Michika	Minkisi/Wuro Ngiki	51	
			Hyambula	Borno	Gwoza	Bitu/Izge	28	
			K/Wuro Ngayandi	Adamawa	Song	Sigire	30	
			Madagali	Borno	Dikwa	Dikwa	32	
			Shelmi/Sukur/Vapura		Kaga	Benisheikh	19	
			Wula		Cameroon	Mokolo	Mokolo	49
			Michika	Michika	Madzi	Adamawa	Gombi	Gombi North
	Michika II	Yola South			Yolde Kohi		41	
	Minkisi/ Wuro Ngiki	Borno			Gwoza	Gwoza Wakane/Bulabulin		21
						Bitu/Izge		20
	Mubi North	Kolere	Adamawa	Yola North	Luggere	19		
	Mubi South	Mugulbu/Yadafa	Borno	Bama	Buduwa/Bula Chirabe	19		
	Song	Song Waje	Adamawa	Song	Sigire	150		
	Yola North	Yola North	Jambutu	Adamawa	Fufore	Karlahi	11	
			Limawa		Numan	Bare	14	
			Mbamba		Demsa	Mbula Kuli	16	
Yola South	Yola South	Namtari	Adamawa	Fufore	Farang	21		
				Guyuk	Dumna	10		
Borno	Bama	Shehuri/Hausari/Mairi	Borno	Bama	Gulumba/Jukkuri/Batra	24		
	Gwoza	Gwoza Wakane/Bulabulin	Borno	Gwoza	Guduf Nagadiyo	9		
	Kala Balge	Rann "A"	Cameroon	Makari	Bodo	17		
				Maky	Afade	16		
Monguno	Monguno	Borno	Marte	Njine	7			