

 **109** Individuals Affected
 **02** Affected Locations
 **00** Damaged Shelters
 **32** Casualties
**Movement Trigger:** 

**Event Overview**

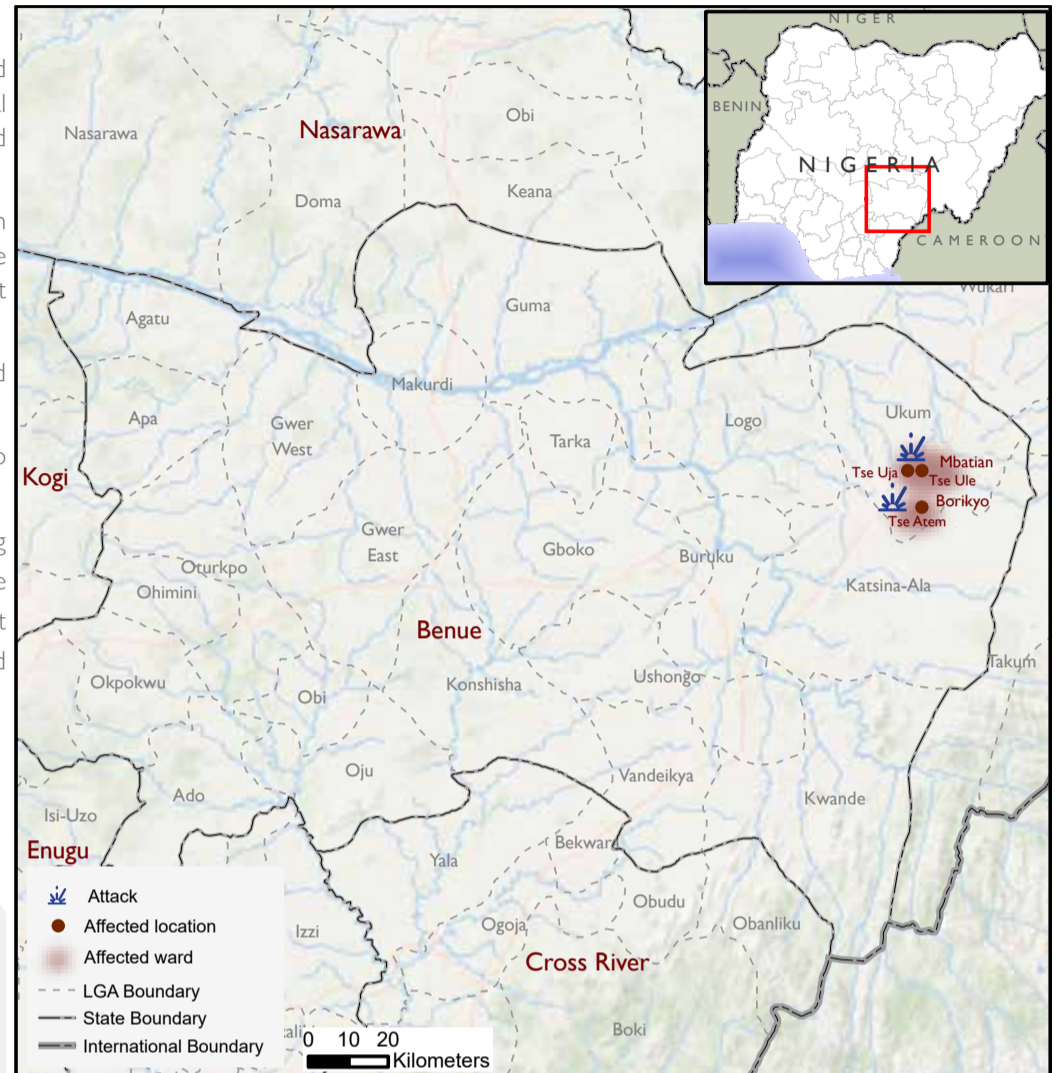
On 31 October 2024, a clash occurred between farmers and herders in the communities of Tse Uja and Tse Ule in Mbatian ward, Ukum local government area (LGA), Benue State. This incident affected a total of 64 individuals across 15 households, including 36 children, 18 women and 10 men. The clash resulted in 17 injuries and six fatalities.

Additionally, on 01 November 2024, farmers and herders clash occurred in the community of Tse Atem in Borikyo ward, Ukum LGA, Benue State. This clash affected 45 individuals across eight households. The affected individuals included 21 children, 13 women and 11 men. Nine injuries were reported as a result of this clash.

Of all the needs identified, health, security and transport were the most prevalent. Other needs included food and non-food items (NFI).

Following these events, DTM (Displacement Tracking Matrix) field staff conducted rapid assessments to inform the humanitarian community and Government/partners, and to enable a targeted response.

Nigeria's north-central and north-west zones are afflicted with a multi-dimensional crisis. Long-standing tensions between ethnic and religious groups often result in attacks and banditry or hirabah. These attacks involve kidnapping and grand larceny along major highways by criminal groups. During the past years, the crisis accelerated and has resulted in widespread displacement across the north-central and north-west regions.



Map 1. Showing locations affected.

*This map is for illustration purposes only. The boundaries and names shown, and the designations used on this map do not imply official endorsement or acceptance by the International Organization for Migration.*

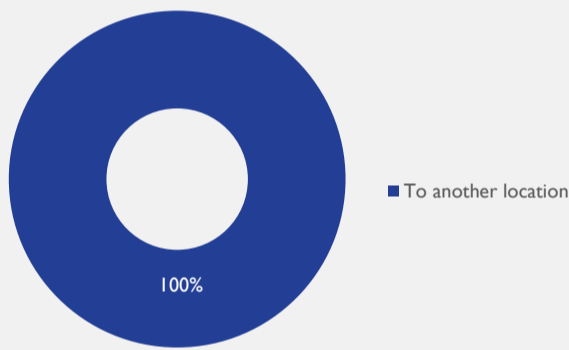
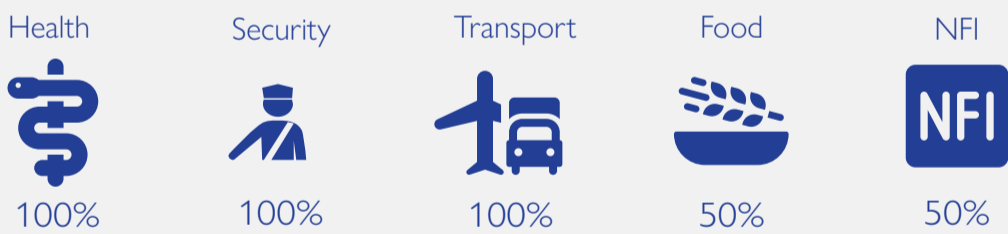


Fig. 1. Movement intention

**Priority Needs\***



\*Multiple choices selected

Fig. 2. Most needed assistance

**Demographic Breakdown**

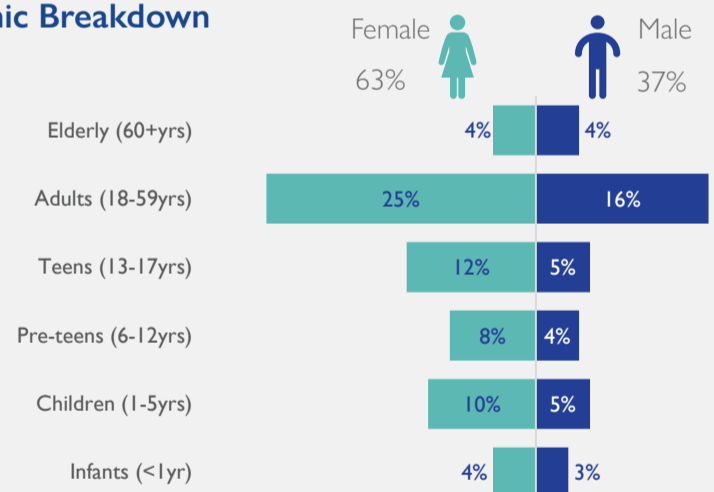


Fig. 3. Gender breakdown of affected population

State	LGA	Ward	Incident type	Number of Affected Household	Number of Affected Individuals			Casualty
					Male	Female	Total	
Benue	Ukum	Mbatian	Attacks	15	23	41	64	23
		Borikyo	Attacks	8	17	28	45	9
<b>Total</b>				<b>23</b>	<b>40</b>	<b>69</b>	<b>109</b>	<b>32</b>

**Methodology:** Crises and emergencies require the humanitarian community to act urgently. As a subcomponent of DTM's mobility tracking, flash reports utilise direct observation and a broad network of key informants to monitor sudden displacement resulting from events like disasters or attacks and collect information on the number, profile, and immediate needs of affected populations. In the initial 24 - 48 hours after an incident, DTM Nigeria activates a rapid assessment to document the event, urgent needs of affected individuals, demographic information, and impact. If displacement occurs, DTM Nigeria issues an Early Warning Flash/Incident report within 72 hours, notifying partners and stakeholders.

**Disclaimer:** The opinions expressed in the report are those of the authors and do not necessarily reflect the views of the International Organization for Migration (IOM). The designations employed and the presentation of material throughout the report do not imply the expression of any opinion whatsoever on the part of IOM concerning the legal status of any country, territory, city or area, or its authorities, or concerning its frontiers or boundaries.

When quoting, paraphrasing, or in any other way using the information mentioned in this report, the source needs to be stated appropriately as follows: "Source: Displacement Tracking Matrix (DTM) of the International Organization for Migration (IOM), November 2024."

