

582 Individuals Affected
 05 Affected Locations
 19 Damaged Shelters
 43 Casualties
 Movement Trigger:

Event Overview

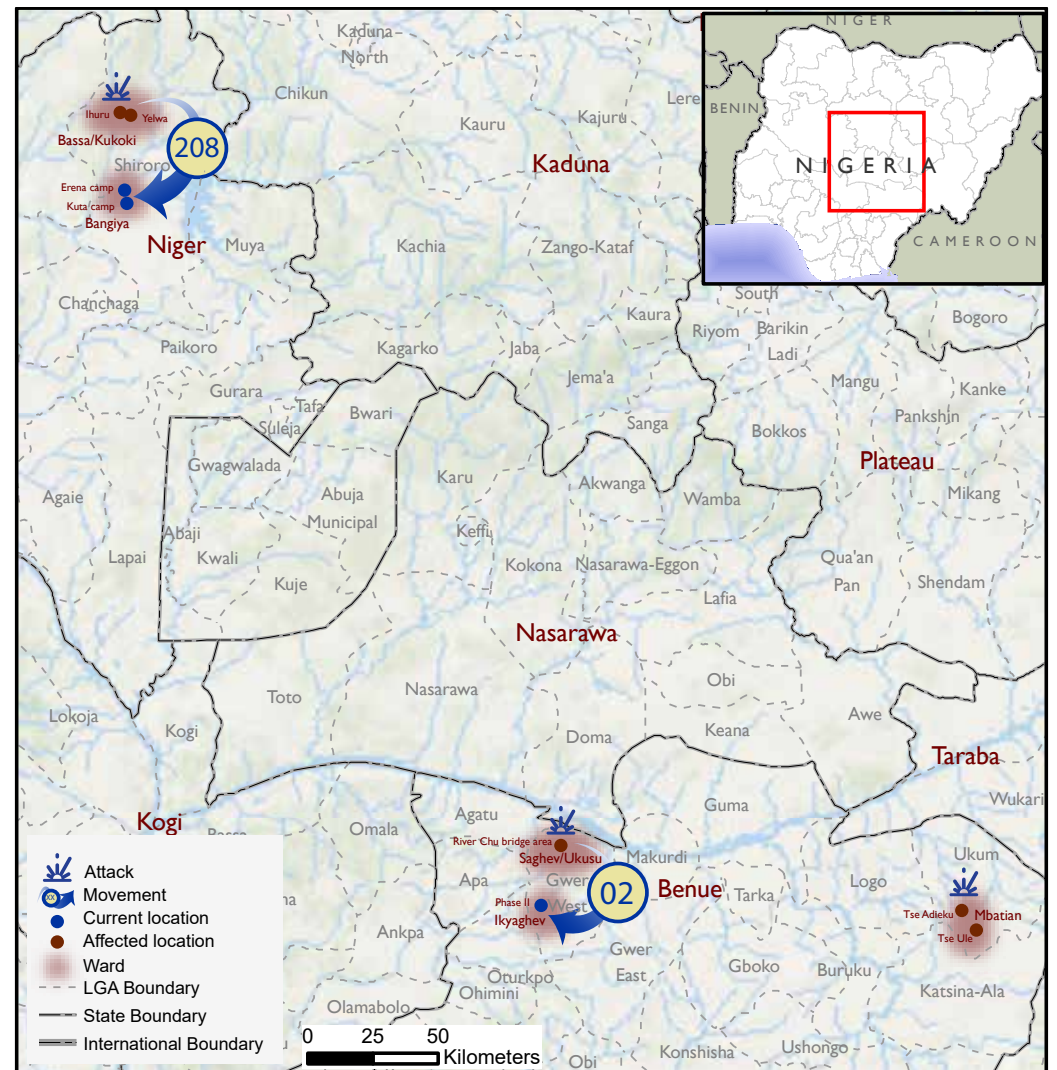
On 16, 18, and 19 October 2024, armed bandits attacked the communities of Tse Adieku in Mbatian ward of Ukum local government area (LGA) and River Chu bridge Ahume area in Saghev/Ukusu ward of Gwer West. Farmer-herders clash also occurred within the same period in the community Tse Ule in Mbatian ward of Ukum LGA, all in Benue State. The attacks affected 73 individuals in 12 households and displaced two individuals from River Chu bridge Ahume area to the community of Phase II in Ikyaghev ward. Those affected by the attacks included 32 children, 23 women and 18 men, while the clash affected 55 individuals in 12 households, including 20 children, 22 women and 13 men. There were reports of 13 injuries and three fatalities.

Additionally, on 17 and 19 October 2024, armed bandits attacked the communities of Ihuru and Yelwa in Bass/Kukoki ward of Shiroro LGA in Niger State. Twenty injuries and seven fatalities were reported. The attacks affected 454 individuals in 75 households and displaced 208 individuals from the community of Yelwa to Erena camp and Kuta camp in Bangajiya ward. The affected included 293 children, 95 women and 66 men.

Of all the needs identified, health, food, non-food items (NFI), security and shelter were the most prevalent. Other needs included WASH and transport.

Following these events, DTM (Displacement Tracking Matrix) field staff conducted rapid assessments to inform the humanitarian community and Government/partners, and to enable a targeted response.

Nigeria's north-central and north-west zones are afflicted with a multi-dimensional crisis. Long-standing tensions between ethnic and religious groups often result in attacks and banditry or hirabah. These attacks involve kidnapping and grand larceny along major highways by criminal groups. During the past years, the crisis accelerated and has resulted in widespread displacement across the north-central and north-west regions.



Map 1. Showing locations affected.

This map is for illustration purposes only. The boundaries and names shown, and the designations used on this map do not imply official endorsement or acceptance by the International Organization for Migration.

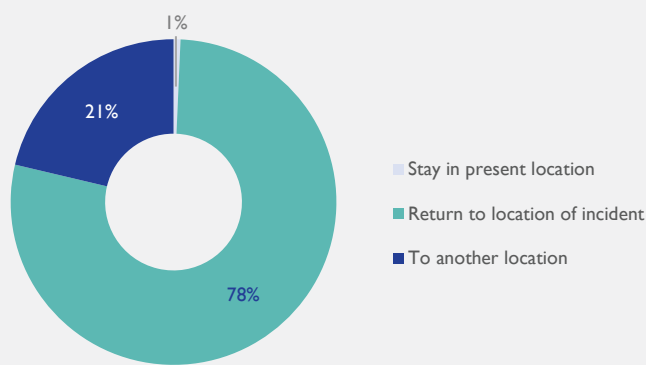


Fig. 1. Movement intention

Priority Needs*



Fig. 2. Most needed assistance

Demographic Breakdown

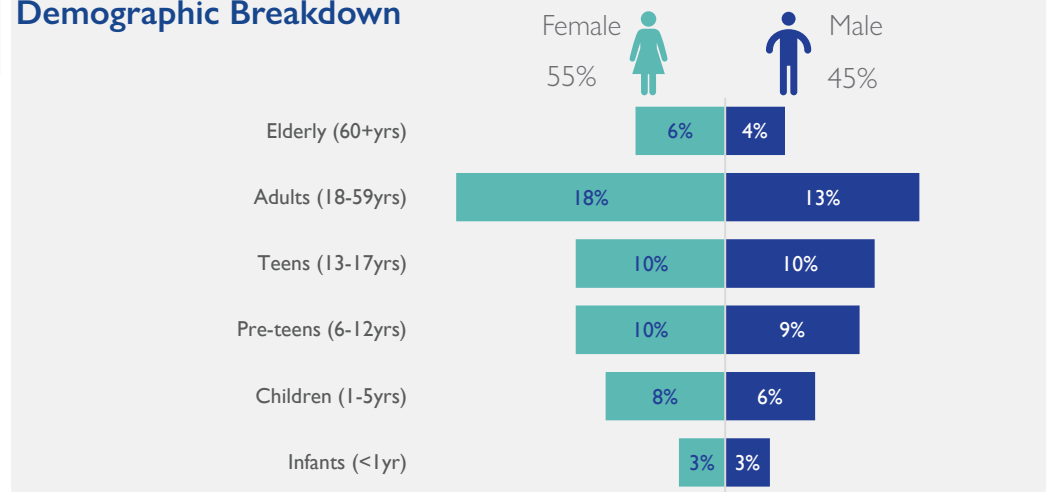


Fig. 3. Gender breakdown of affected population

State	LGA	Ward	Incident type	Number of Affected Household	Number of Affected Individuals			Casualty	Number of Partially Damaged Shelters
					Male	Female	Total		
Benue	Ukum	Mbatian	Attacks	22	61	63	124	12	0
	Gwer West	Sagher/Ukusu	Attacks	2	3	1	4	4	0
Niger	Shiroro	Bass/Kukoki	Attacks	75	194	260	454	27	19
Total				99	258	324	582	43	19

Methodology: Crises and emergencies require the humanitarian community to act urgently. As a subcomponent of DTM's mobility tracking, flash reports utilise direct observation and a broad network of key informants to monitor sudden displacement resulting from events like disasters or attacks and collect information on the number, profile, and immediate needs of affected populations. In the initial 24 - 48 hours after an incident, DTM Nigeria activates a rapid assessment to document the event, urgent needs of affected individuals, demographic information, and impact. If displacement occurs, DTM Nigeria issues an Early Warning Flash/Incident report within 72 hours, notifying partners and stakeholders.

Disclaimer: The opinions expressed in the report are those of the authors and do not necessarily reflect the views of the International Organization for Migration (IOM). The designations employed and the presentation of material throughout the report do not imply the expression of any opinion whatsoever on the part of IOM concerning the legal status of any country, territory, city or area, or its authorities, or concerning its frontiers or boundaries.

When quoting, paraphrasing, or in any other way using the information mentioned in this report, the source needs to be stated appropriately as follows: "Source: Displacement Tracking Matrix (DTM) of the International Organization for Migration (IOM), October 2024."

