

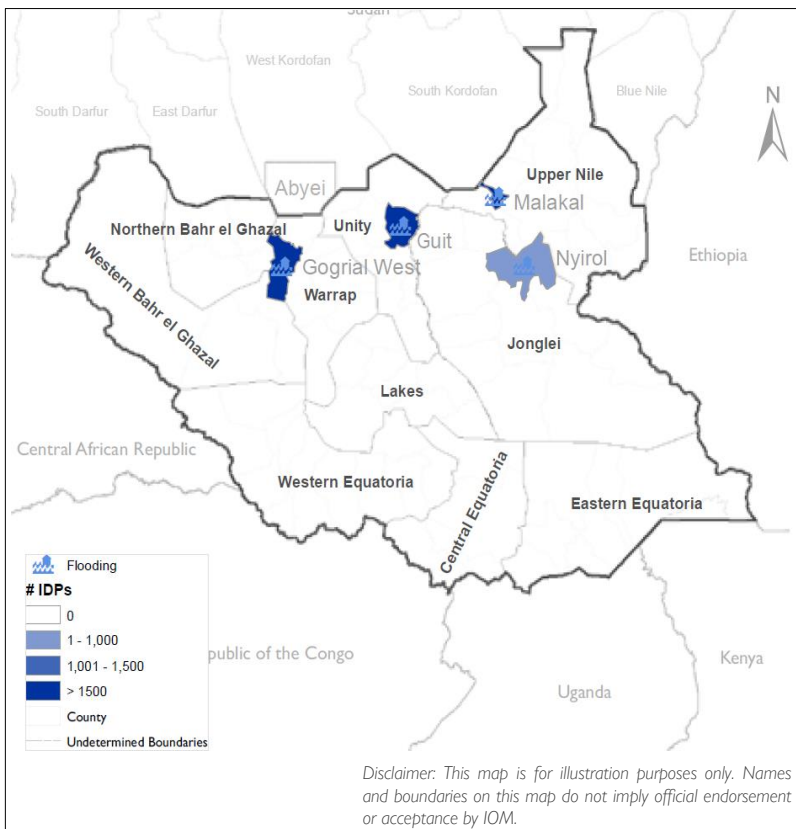
## HIGHLIGHTS

South Sudan is currently facing a complex humanitarian crisis characterized by extensive internal displacements. The underlying causes of these displacement dynamics are varied and include communal clashes, flooding, insecurity, violence, natural disasters, and cross-border movements.

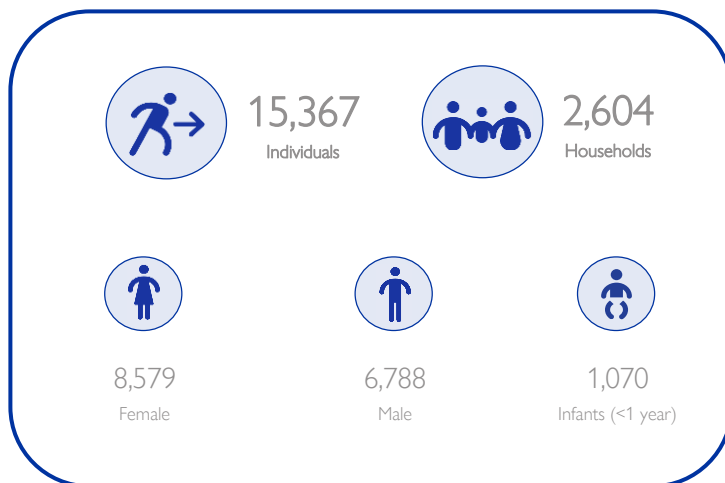
Between 16th and 31st October 2024, enumerators from the Displacement Tracking Matrix documented significant disaster (flood) related displacements affecting 15,367 individuals. The majority of these displacements occurred in Warrap where 6,780 individuals were displaced to Gogrial West, 6,156 to Malakal County in Upper Nile State, 1,575 to Guit, and 856 to Nyriol in Jonglei state.

The effect of these displacements calls for urgent humanitarian intervention among the affected population. Those who have been displaced identified their most pressing requirements as being in dire need of food, shelter, and non-food items.

## MAP - DISPLACEMENT



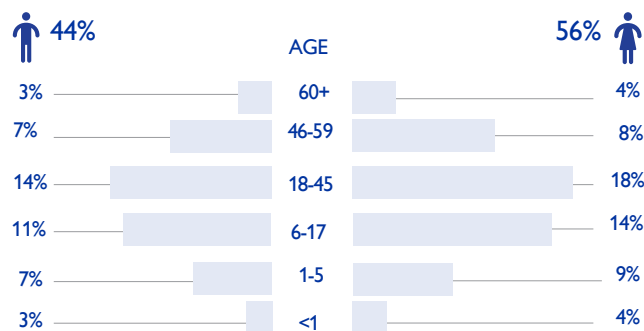
## KEY DISPLACEMENT FIGURES



## IDP FIGURES

COUNTY	MALE	FEMALE	TOTAL	TRIGGER
Gogrial West	2,798	3,982	6,780	Disaster (Flooding)
Malakal	2,820	3,336	6,156	Disaster (Flooding)
Guit	768	807	1,575	Disaster (Flooding)
Nyriol	402	454	856	Disaster (Flooding)
<b>Total</b>	<b>6,788</b>	<b>8,579</b>	<b>15,367</b>	

## DEMOGRAPHICS



## TOP THREE PRIORITY NEEDS RANKED



Perceptions of current needs are linked to key informant insights, which highlight and prioritize immediate challenges or gaps in this specific context.

## METHODOLOGY AND CONTEXT

The Event Tracking tool is a rapid displacement tracking system that collects data on the movements of over 50 households through assessments by DTM staff and local enumerators. Information is gathered via direct visits or interviews with key informants and cross-referenced with secondary sources for accuracy. The data reflects the situation at the time of assessment, and while efforts are made to ensure accuracy, comprehensive coverage nationwide cannot be guaranteed by the International Organization for Migration (IOM).