

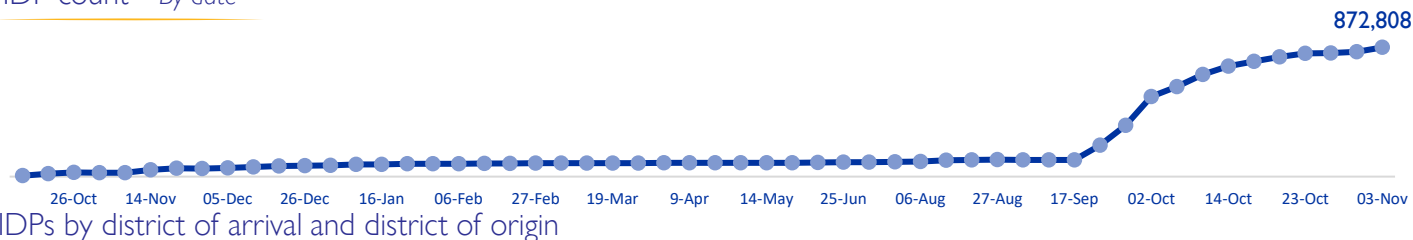
MOBILITY SNAPSHOT – Round 59

Report Production Date: 04 November 2024 | Data collected up till 4 pm on 03 November 2024

Overview

The International Organization for Migration (IOM) conducts daily monitoring of population movements to support preparedness and response efforts. This work is carried out in partnership with the Disaster Risk Management Unit, technically supported by the United Nations Development Programme, to triangulate and verify data from IOM's mobility tracking exercise and the Lebanese Red Cross household registration exercise.

IDP count – By date



872,808 (52% female and 48% male)
Total displaced individuals



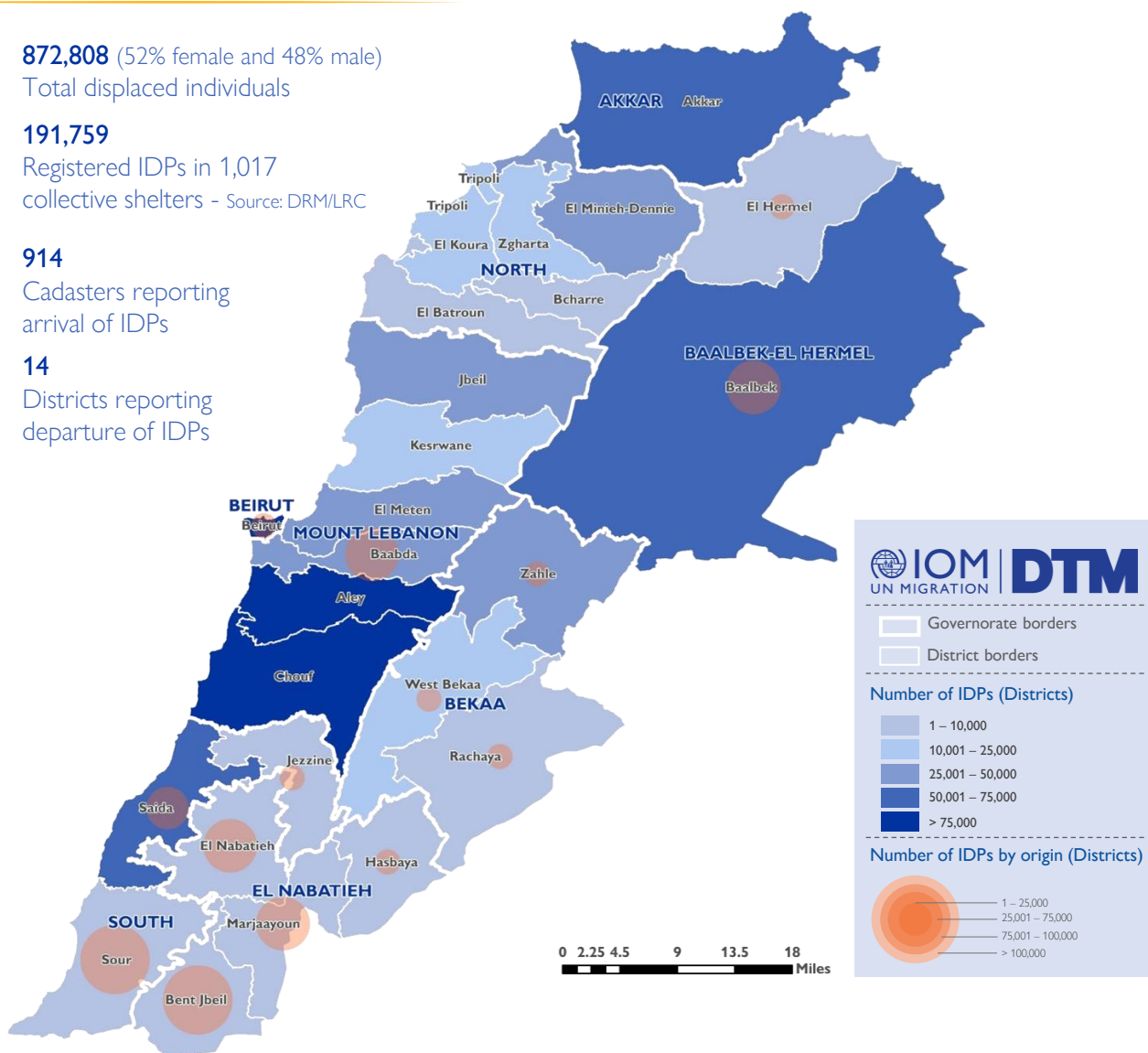
191,759
Registered IDPs in 1,017
collective shelters - Source: DRM/LRC



914
Cadasters reporting
arrival of IDPs



14
Districts reporting
departure of IDPs



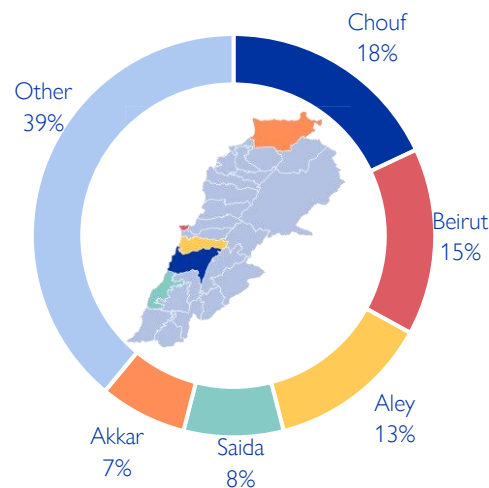
This map is for illustration purposes only. Names and boundaries on this map do not imply official endorsement or acceptance by IOM.

*DRM/LRC conducts household level registration for IDPs to inform direct assistance. This complements IOM's mobility tracking which captures an estimate of the total IDP population to inform national preparedness and response planning, as well as resource mobilisation.

Displacement within Lebanon – By district of arrival

Governorate	District	# of Cadasters	IDPs
Mount Lebanon	Chouf	83	155,789
Beirut	Beirut	12	131,943
Mount Lebanon	Aley	61	113,263
South	Saida	22	68,729
Akkar	Akkar	135	60,468
Baalbek-El Hermel	Baalbek	26	56,786
Mount Lebanon	El Meten	76	43,529
Mount Lebanon	Jbeil	68	41,113
Bekaa	Zahle	39	30,342
Mount Lebanon	Baabda	47	28,853
North	El Minieh-Dennie	44	26,071
Mount Lebanon	Kesrwane	54	21,557
Bekaa	West Bekaa	25	17,574
North	Tripoli	13	15,944
North	Zgharta	32	14,885
North	El Koura	40	12,491
South	Jezzine	30	7,884
South	Sour	1	7,775
North	El Batroun	51	6,901
Bekaa	Rachaya	19	4,295
El Nabatieh	Hasbaya	11	2,709
North	Bcharre	12	1,999
El Nabatieh	Bent Jbeil	2	663
El Nabatieh	El Nabatieh	7	578
Baalbek-El Hermel	El Hermel	1	450
El Nabatieh	Marjaayoun	3	217
Total		914	872,808

Chart 1: IDPs distribution by district of arrival

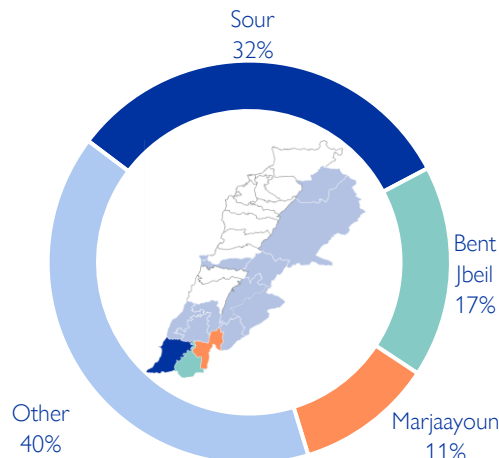


As of 03 November, Lebanon has recorded 872,808 internally displaced persons (IDPs), showing around 4% increase since 30 October. IDPs have sought safety in 914 cadasters throughout Lebanon. Displacement has been observed in all 26 districts across all eight governorates. 61% of the IDPs are in five districts out of the total 26 districts hosting IDPs—specifically, Chouf, Beirut, Aley, Saida, and Akkar.

Displacement within Lebanon – By district of departure

Governorate	District	IDPs
South	Sour	282,386
El Nabatieh	Bent Jbeil	148,743
El Nabatieh	Marjaayoun	98,876
El Nabatieh	El Nabatieh	89,805
Baalbek-El Hermel	Baalbek	85,880
Mount Lebanon	Baabda	82,645
South	Saida	45,336
Beirut	Beirut	15,811
El Nabatieh	Hasbaya	8,279
Bekaa	West Bekaa	5,814
Bekaa	Zahle	3,821
Baalbek-El Hermel	El Hermel	2,946
Bekaa	Rachaya	1,458
South	Jezzine	1,008
Total		872,808

Chart 2: IDPs distribution by district of departure



The majority of IDPs (60%) originate from three districts. These three districts span along the Southern border of Lebanon. Specifically, 32% are from Sour, 17% are Bent Jbeil, and 11% are from Marjaayoun. The remaining 40% originate from 11 different districts.

New displacement within Lebanon – By district of arrival

Governorate	District	# of Cadasters	IDPs
Baalbek-El Hermel	Baalbek	10	11,483
Mount Lebanon	Aley	12	5,950
Beirut	Beirut	3	2,950
North	Tripoli	5	2,863
Akkar	Akkar	35	2,150
Mount Lebanon	Chouf	9	1,384
Bekaa	Zahle	4	885
Mount Lebanon	El Meten	6	475
South	Saida	7	440
Mount Lebanon	Baabda	3	308
South	Sour	1	300
Mount Lebanon	Jbeil	7	283
Bekaa	West Bekaa	1	150
Bekaa	Rachaya	1	93
South	Jezzine	4	67
Mount Lebanon	Kesrwane	3	67
North	El Minieh-Dennie	4	63
North	El Koura	5	57
El Nabatieh	Bent Jbeil	1	50
North	Zgharta	3	40
El Nabatieh	Hasbaya	2	36
North	El Batroun	2	10
El Nabatieh	El Nabatieh	1	6
Total		129	30,110

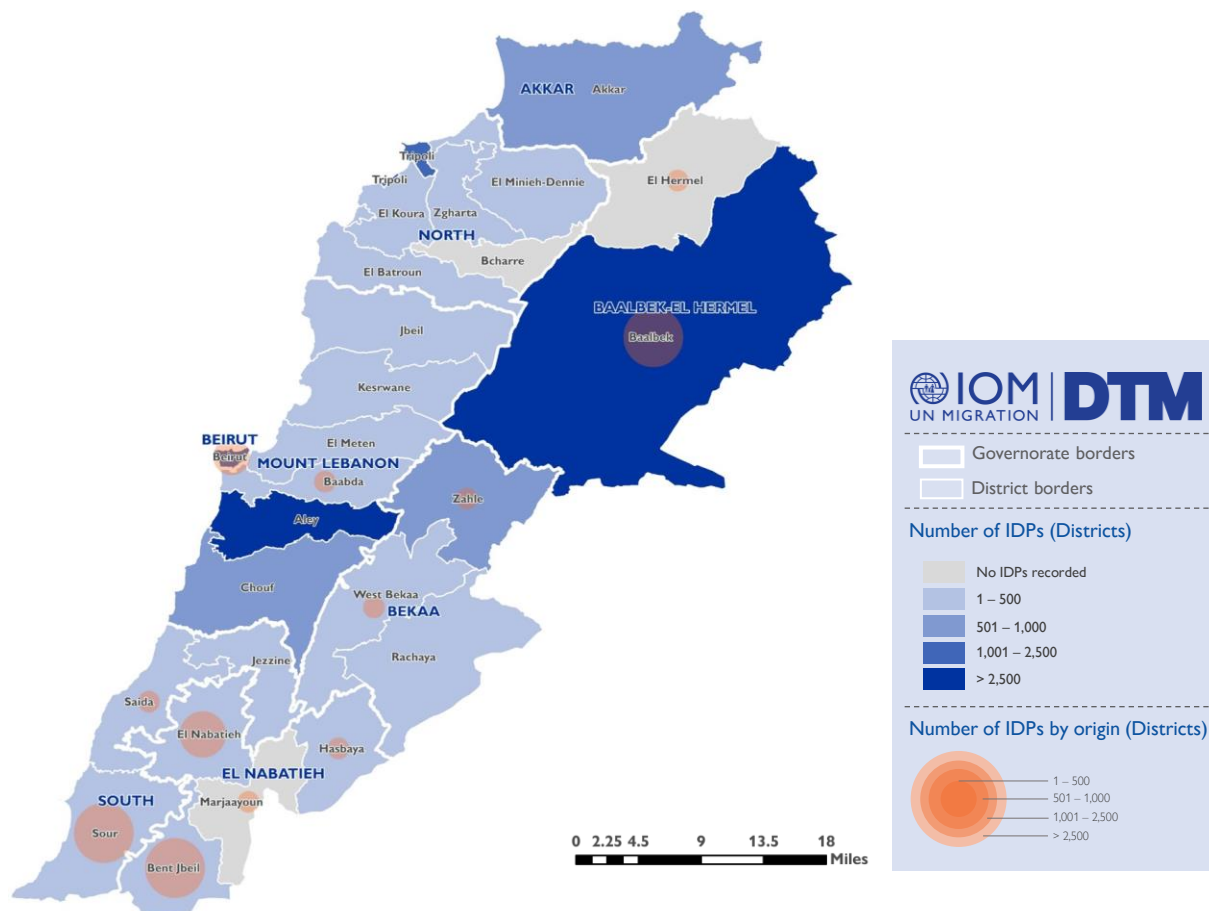
Since 30 October, there have been 30,110 new displacements. These individuals might be experiencing displacement for the first time or undergoing secondary movement.

The majority of newly displaced individuals come from Baalbek (42%), Sour (21%), Bent Jbeil (21%), El Nabatieh (9%), and Beirut (4%) districts. The remaining 3% relocated from Saida, Marjaayoun, Baabda, Hasbaya, El Hermel, Zahle, and West Bekaa districts.

Over the past week, the top five destinations (districts) for newly displaced individuals were Baalbek (38%), Aley (20%), Beirut (10%), Tripoli (10%), and Akkar (7%).

The increase in total number of IDPs may not always align with the number of new arrivals within a specific period. This difference often occurs when Key Informants (KIs) report cumulative totals that include previously uncounted IDPs.

Newly arrived IDPs by cadaster of arrival and district of origin



This map is for illustration purposes only. Names and boundaries on this map do not imply official endorsement or acceptance by IOM.

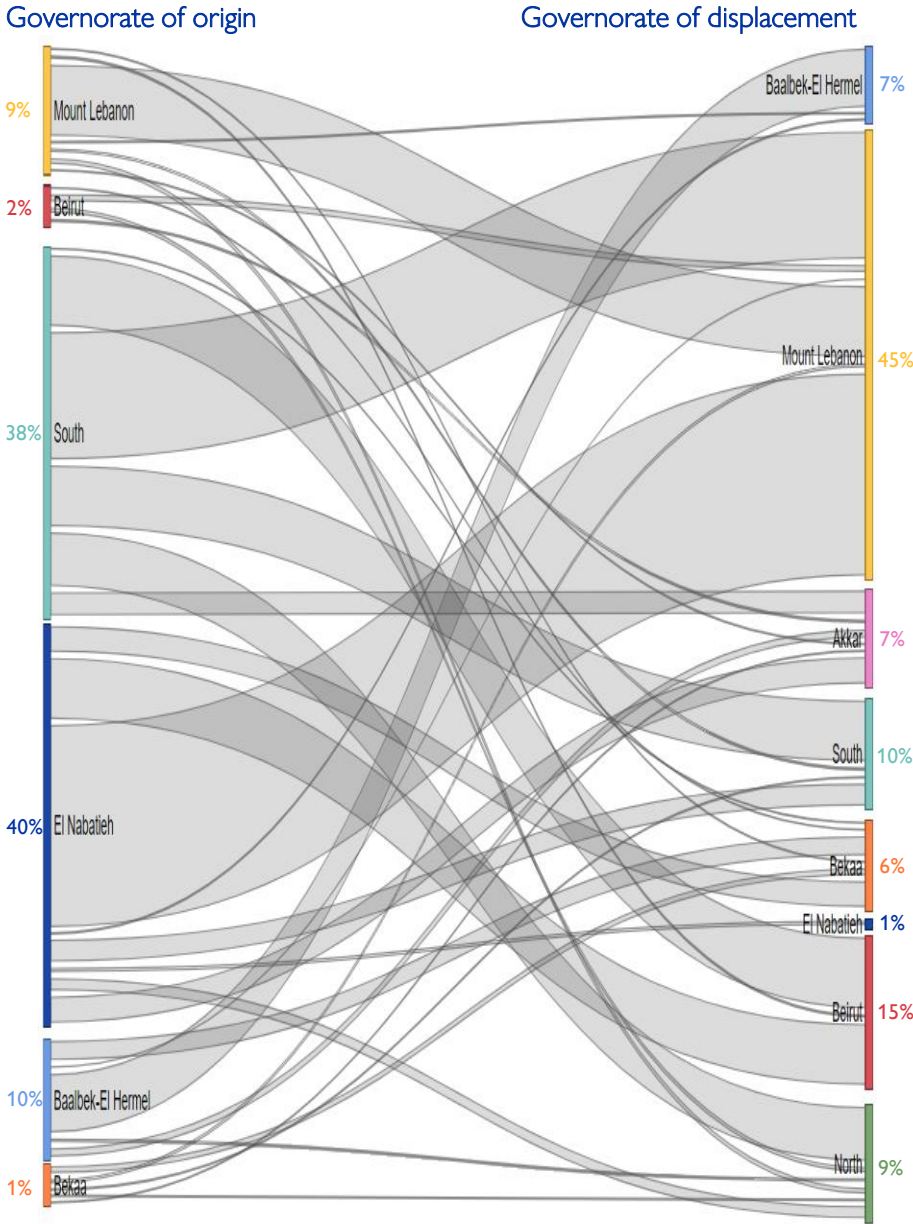
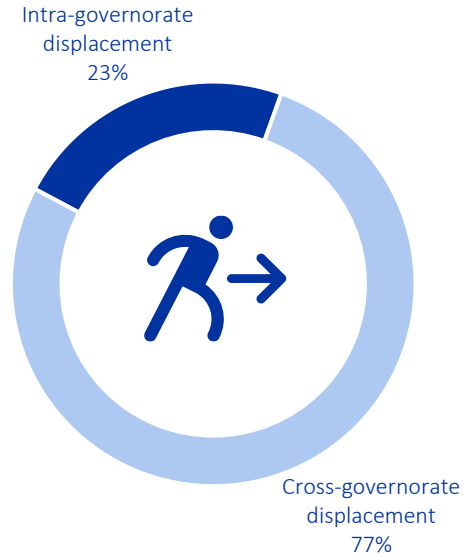
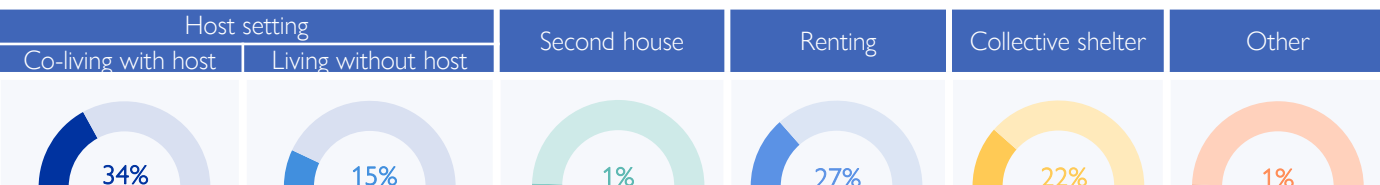


Chart 3: Displacement trends



Overall, 77% of the displacement has occurred outside the boundaries of the IDPs' governorate of origin. While 40% (345,703) of the IDPs originate from El Nabatieh, of this population 99% fled to locations outside the boundaries of the governorate. Similarly, in the South governorate, where 38% (328,730) of IDPs originated, 82% of these IDPs chose to move outside the boundaries of the governorate. However, in Mount Lebanon governorate, where 9% (87,645) of IDPs originated, 84% of these IDPs chose to move internally within the boundaries of the governorate.

IDPs distribution by shelter type – By Governorate



Around 49% of IDPs are currently living in host settings, around 22% are housed in 1,017 collective shelters, while 27% have opted for rental housing. Another 1% have relocated to their secondary residences. Meanwhile, 1% are categorized under “other”, this includes unfinished buildings, tents, parks, on the streets, or self-settled sites.

Of the 49% in host settings, 293,954 are co-living with non-internally displaced families, while 133,807 reside separately. Notably, 64% of the 427,761 individuals in host settings are living in overcrowded conditions according to the perception of IOM DTM key informants.

Governorate	Host setting		Second house	Renting	Collective shelter	Other
	Co-living with host	Living without host				
Bekaa	51%	3%	0%	17%	29%	0%
Baalbek-El Hermel	23%	41%	0%	8%	24%	4%
Beirut	46%	4%	1%	3%	41%	5%
El Nabatieh	17%	16%	0%	44%	22%	1%
Mount Lebanon	31%	11%	1%	39%	18%	0%
North	22%	22%	0%	36%	18%	2%
South	32%	31%	1%	19%	17%	0%
Akkar	38%	27%	0%	22%	12%	1%

Displacement demographics

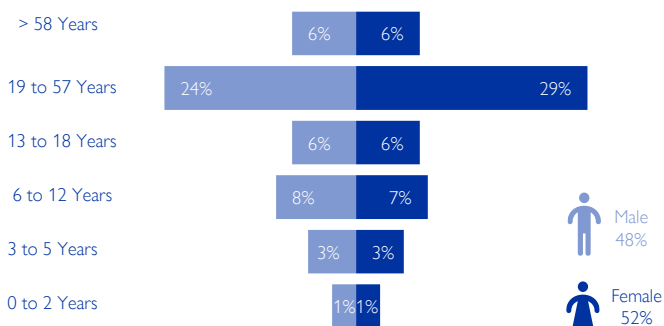


Chart 4: Displacement demographics – Based on Round 57

35% of IDPs are children (< 18 years), while 35% are female adults and 30% are male adults.

Note: These figures represent sample data of 2 households per location provided by key informants and do not reflect the entire IDP population in each area.

Methodology

The objective of the Mobility Snapshot is to support the humanitarian community in preparedness and response planning. Multi-layered data is routinely captured through Rounds using a suite of methodological tools designed to track and monitor displacement. These tools are in line with the [DTM Global Methodological Framework](https://dtm.iom.int/terms-and-conditions).

Data is collected nationwide through a combination of face-to-face and remote data collection methods, utilizing a network of over 50 enumerators and 1,500 key informants. These key informants consist of government officials, mukhtars, community representatives, and neighborhood focal points.

The following citation is required when using any data and information included in this information product: "International Organization for Migration (IOM), November 2024. DTM Mobility Snapshot, Round 59 IOM, Lebanon". For more information on terms and conditions of DTM reports and information products, please refer to <https://dtm.iom.int/terms-and-conditions>.