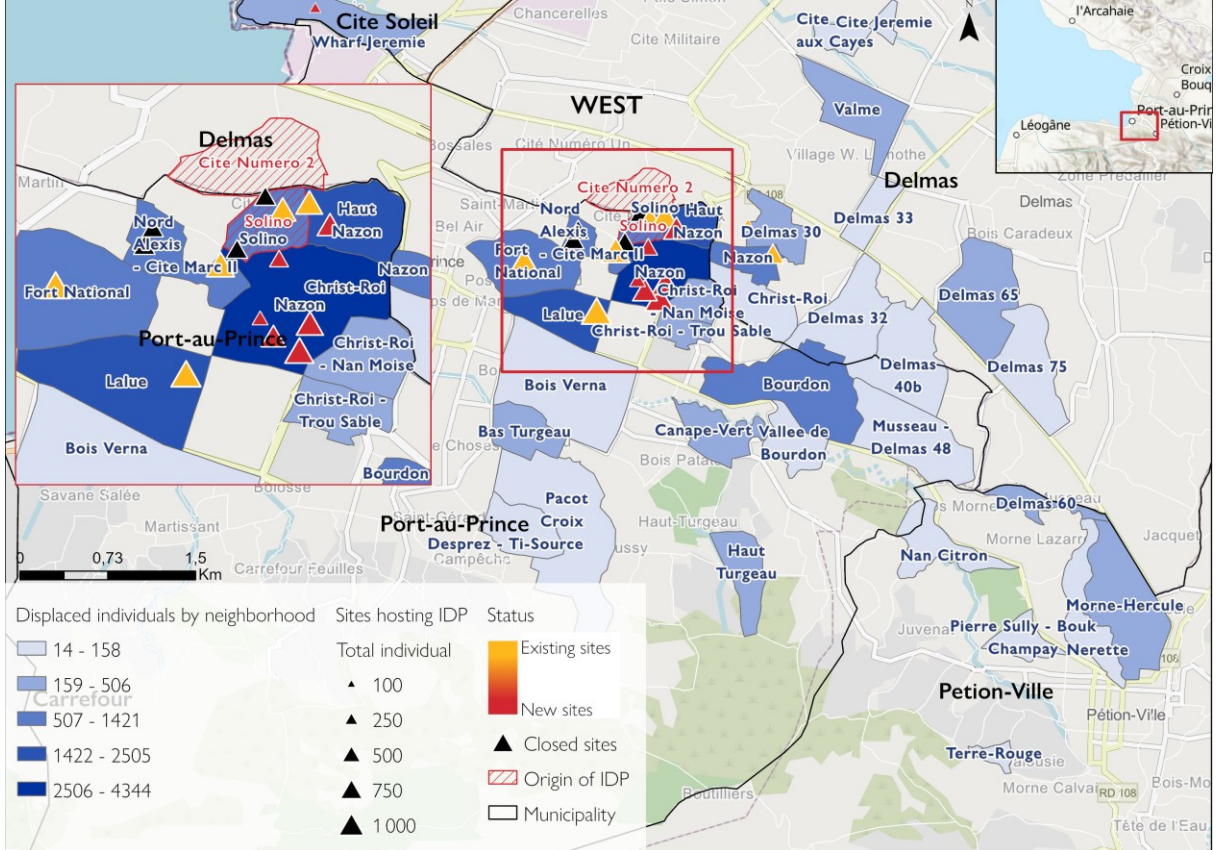


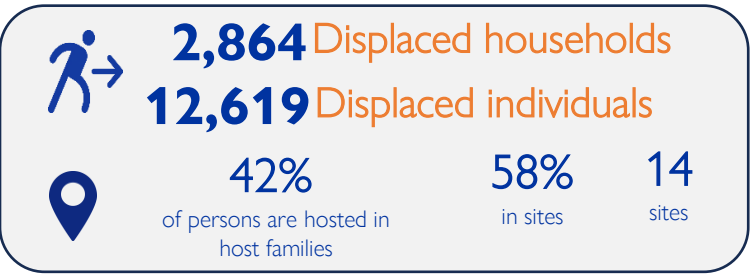
This report is an update of the one published on 23 October (ETT 51.1). While people who were displaced by attacks in Tabarre 27 have returned to their residences, the number of those displaced by the attacks in and around Solino has increased significantly. A total of 12,619 people have been displaced following these attacks in Solino and its surroundings and the majority of them (58%) took refuge in 14 sites, including 7 that already existed before these incidents and 7 newly created following these incidents. It should be noted that 4 other sites have been closed, IDPs who were hosted there have fled to take refuge in other sites (for more details, see the map below and tables on the next page)

Origins and host locations of displaced persons



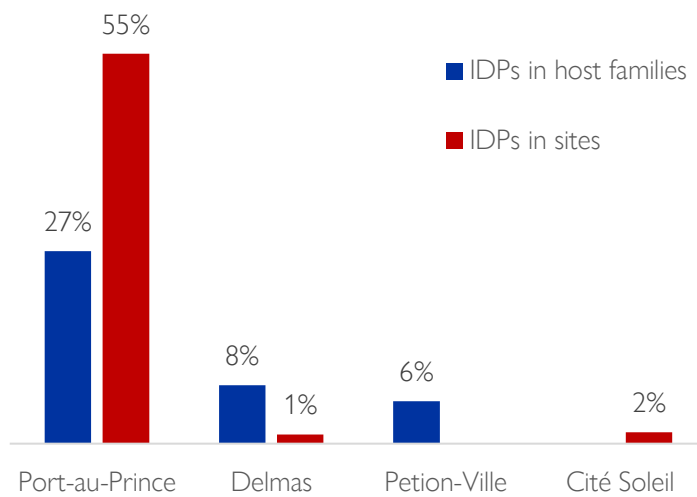
This map is for illustration purposes only. The depiction and use of boundaries, geographic names and related data shown on maps and included in this report are not warranted to be error free nor do they imply judgment on the legal status of any territory, or any endorsement or acceptance of such boundaries by IOM.

Demography



Municipalities hosting displaced populations

(see pages 2 to 3 for more details)



A. Sites hosting displaced persons affected by these incidents

Department	Municipality	Municipality section	Neighborhood	Site name	Status of the site	Households newly displaced following these incidents	Individuals newly displaced following these incidents	Households present on the site before these incidents	Individuals present on the site before these incidents	Total of households on the site	Total of individuals on the site
West	Port-au-Prince	1re Section Turgeau	Nazon	Institution chrétienne d'Haïti	Created following these incidents	371	1,300	0	0	371	1,300
West	Port-au-Prince	1re Section Turgeau	Nazon	Imaginescence	Created following these incidents	220	1,137	0	0	220	1,137
West	Port-au-Prince	1re Section Turgeau	Haut Nazon	Église Tabernacle de Sion	Created following these incidents	200	1,000	0	0	200	1,000
West	Port-au-Prince	1re Section Turgeau	Nazon	Coin des Petits	Created following these incidents	236	947	0	0	236	947
West	Port-au-Prince	1re Section Turgeau	Fort National	Première Église Baptiste de Port au prince	Already existing before these incidents	221	885	134	536	355	1,421
West	Port-au-Prince	1re Section Turgeau	Nazon	Lakou Blanc	Created following these incidents	140	560	0	0	140	560
West	Port-au-Prince	1re Section Turgeau	Nazon	College chretien d'Haïtit secondaire	Created following these incidents	80	400	0	0	80	400
West	Port-au-Prince	1re Section Turgeau	Haut Nazon	Solino Medilien	Already existing before these incidents	93	308	190	797	283	1,105
West	Port-au-Prince	1re Section Turgeau	Solino	Site Parc nou se Fanmi	Already existing before these incidents	71	213	179	896	250	1,109
West	Cité Soleil	2e Section des Varreux	Wharf Jeremie	Mission Église Évangélique de Jésus Christ	Created following these incidents	40	205	0	0	40	205
West	Port-au-Prince	1re Section Turgeau	Nord Alexis - Cite Marc II	Eglise de Dieu vive pour christ solino	Already existing before these incidents	47	188	282	1033	329	1,221
West	Delmas	1re Section St Martin	Delmas 30	Saint Aude	Already existing before these incidents	25	98	36	161	61	259
West	Delmas	1re Section St Martin	Nazon	Institution Chrétienne Sœur Fatima	Already existing before these incidents	17	68	185	683	202	751
West	Port-au-Prince	1re Section Turgeau	Lalue	College mixte frere jean baptiste	Already existing before these incidents	15	53	330	1,320	345	1,373
Total of persons displaced in sites following these incidents						1,776	7,362				

B. Sites closed following these incidents

Department	Municipality	Municipality section	Neighborhood	Site name	Status of the site	Households who were on the site	Individuals who were on the site
Ouest	Port-au-Prince	1re Section Turgeau	Nord Alexis - Cite Marc II	Institution Mixte Frère Oscar / Institut mixte Pédagogue	Closed	243	1,200
Ouest	Port-au-Prince	1re Section Turgeau	Nord Alexis - Cite Marc II	Centre de santé de Solino	Closed	197	1,000
Ouest	Port-au-Prince	1re Section Turgeau	Solino	Institution Mixte Pierre serge	Closed	397	1,228
Ouest	Port-au-Prince	1re Section Turgeau	Solino	Eglise de dieu evangelik dayiti	Closed	150	438

C. Displaced individuals hosted by host families

Department	Municipality	Municipality section	Neighborhood	Households	Individuals
Ouest	Port-au-Prince	1re Section Turgeau	Bourdon	147	761
Ouest	Port-au-Prince	1re Section Turgeau	Christ-Roi - Trou Sable	97	506
Ouest	Port-au-Prince	1re Section Turgeau	Bas Turgeau	84	430
Ouest	Port-au-Prince	1re Section Turgeau	Haut Nazon	87	400
Ouest	Port-au-Prince	1re Section Turgeau	Canape-Vert	77	370
Ouest	Port-au-Prince	1re Section Turgeau	Christ-Roi - Nan Moise	66	302
Ouest	Port-au-Prince	1re Section Turgeau	Haut Turgeau	57	275
Ouest	Port-au-Prince	1re Section Turgeau	Lalue	53	270
Ouest	Petion-Ville	5ème Bellevue Chardonnière	Delmas 60	47	231
Ouest	Delmas	1re Section St Martin	Maguana	48	227
Ouest	Petion-Ville	5e Section Bellevue Chardonnière	Morne-Hercule	53	205
Ouest	Delmas	1ère Saint martin	Delmas 65	36	186
Ouest	Delmas	1re Section St Martin	Delmas 40b	36	158
Ouest	Delmas	1re Section St Martin	Delmas 33	27	133
Ouest	Delmas	1ère Saint martin	Delmas 32	22	117
Ouest	Petion-Ville	3ème Etang du Jong	Nan Citron	20	107
Ouest	Delmas	1re Section St Martin	Delmas 75	21	106
Ouest	Petion-Ville	5ème Bellevue Chardonnière	Nerette	16	83
Ouest	Petion-Ville	5ème Bellevue Chardonnière	Pierre Sully - Bouk Champay	19	82
Ouest	Delmas	1re Section St Martin	Christ-Roi	15	60
Ouest	Petion-Ville	3e Section Etang du Jonc	Terre-Rouge	10	52
Ouest	Port-au-Prince	1re Section Turgeau	Croix Desprez - Ti-Source	10	47
Ouest	Port-au-Prince	1re Section Turgeau	Pacot	10	28
Ouest	Delmas	1re Section St Martin	Delmas 30	7	28
Ouest	Port-au-Prince	1re Section Turgeau	Bois Verna	5	23
Ouest	Delmas	1re Section St Martin	Cité Jérémie	5	20
Ouest	Port-au-Prince	1re Section Turgeau	Vallée de Bourdon	4	18
Ouest	Port-au-Prince	1re Section Turgeau	Musseau - Delmas 48	5	18
Ouest	Delmas	1re Section St Martin	Cité aux Cayes	4	14
Total of persons displaced in host families following these incidents				1,088	5,257