



**3,506,407**

IDPs and Returnees were covered by DTM Round 26

IOM manages the Displacement Tracking Matrix (DTM) in Nigeria and other countries around the world, to support humanitarian communities with data on displacement and mobility. This information management product determines the status, locations, and needs of people affected by the ongoing conflict in Northeast Nigeria. As of 20 January 2019, the DTM has identified 1,948,349 IDPs (382,296 households) across Adamawa, Bauchi, Borno, Gombe, Taraba, and Yobe States. This represents a decrease of four per cent (78,253 persons) from the previous DTM Round. Overall there is a decrease, but when compared with the same geographical area assessed in the previous DTM Round there is an increase of one per cent (13,502 persons), while the number of returns from neighbouring regions into situations of secondary displacement have also been on the increase.



**Displaced**

**1,948,349** Individuals



**40%** of the IDPs are in camps/camp like settings



**60%** of the people are in host community settings



**80%** Women and Children



**45%** Male



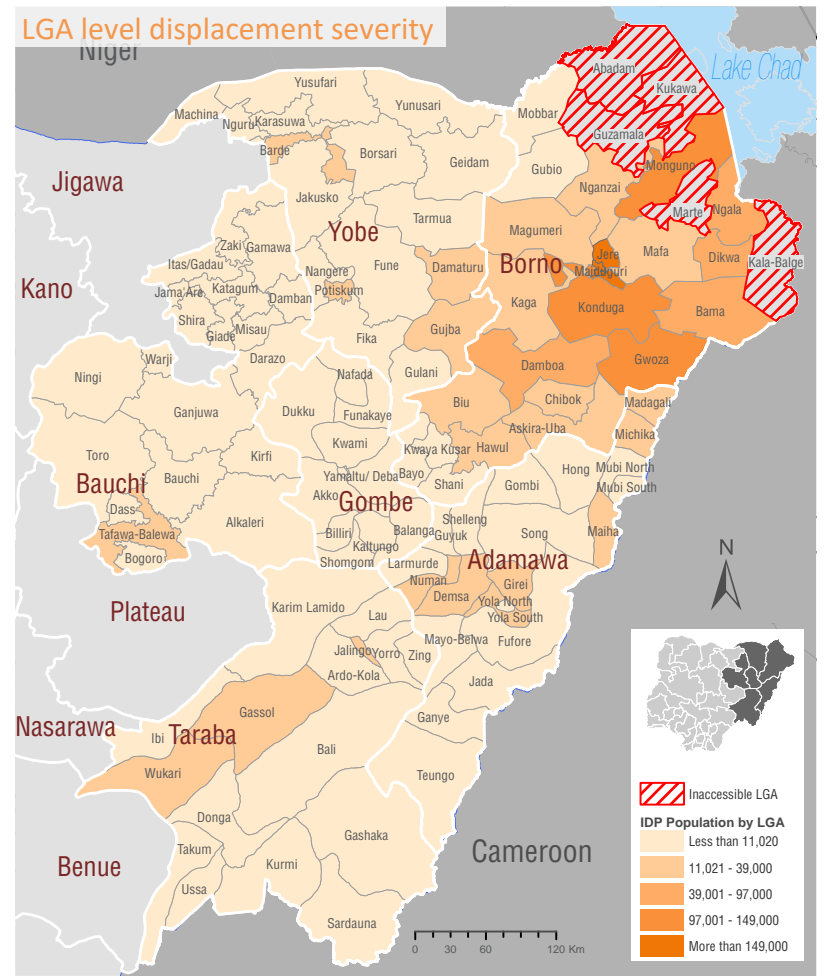
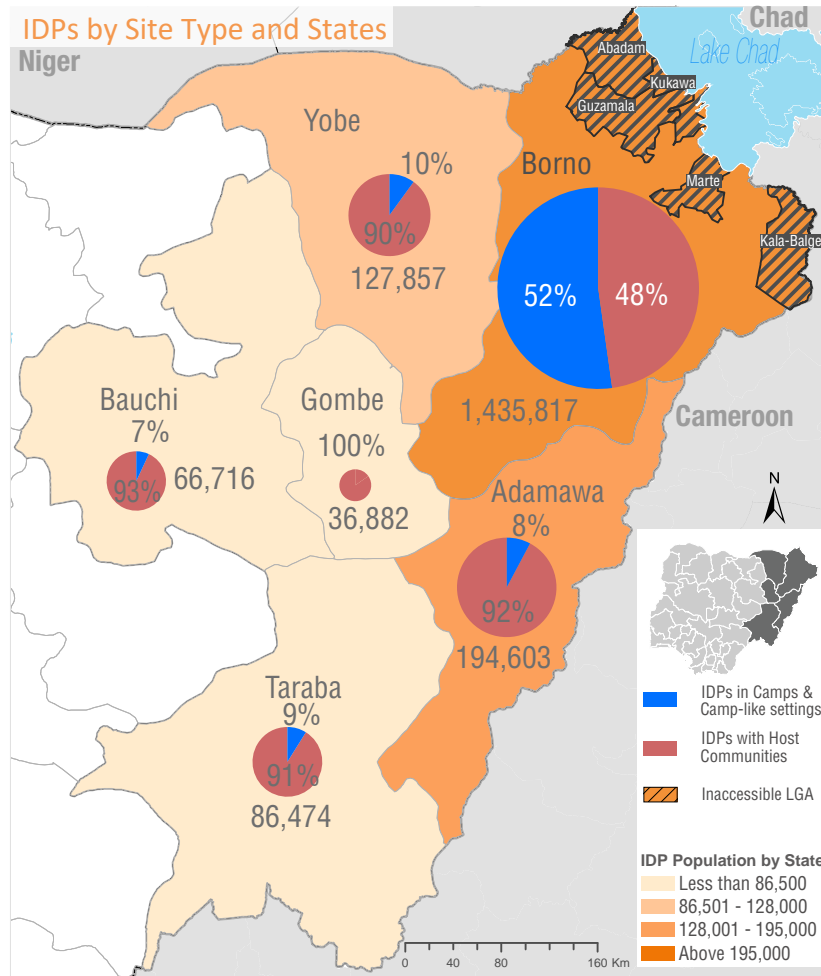
**55%** Female



**25%** Children under 6 years



**73%** In majority of Sites surveyed, IDPs cited food as the main unmet need



**Returnees**

**1,558,058** Individuals

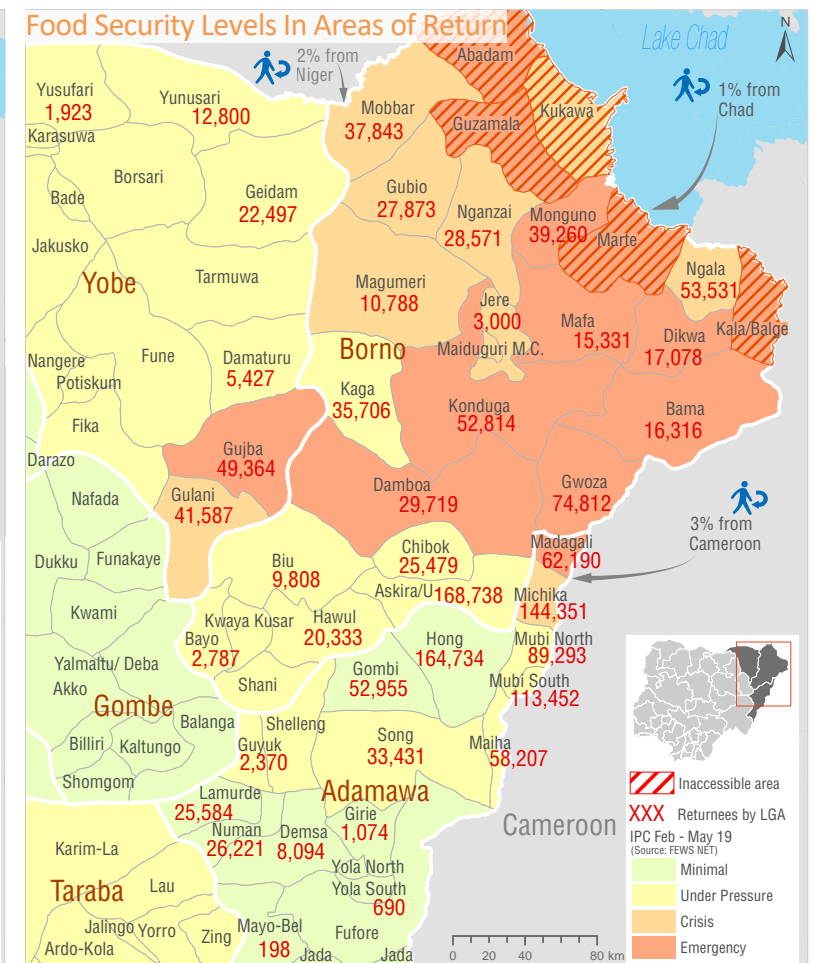
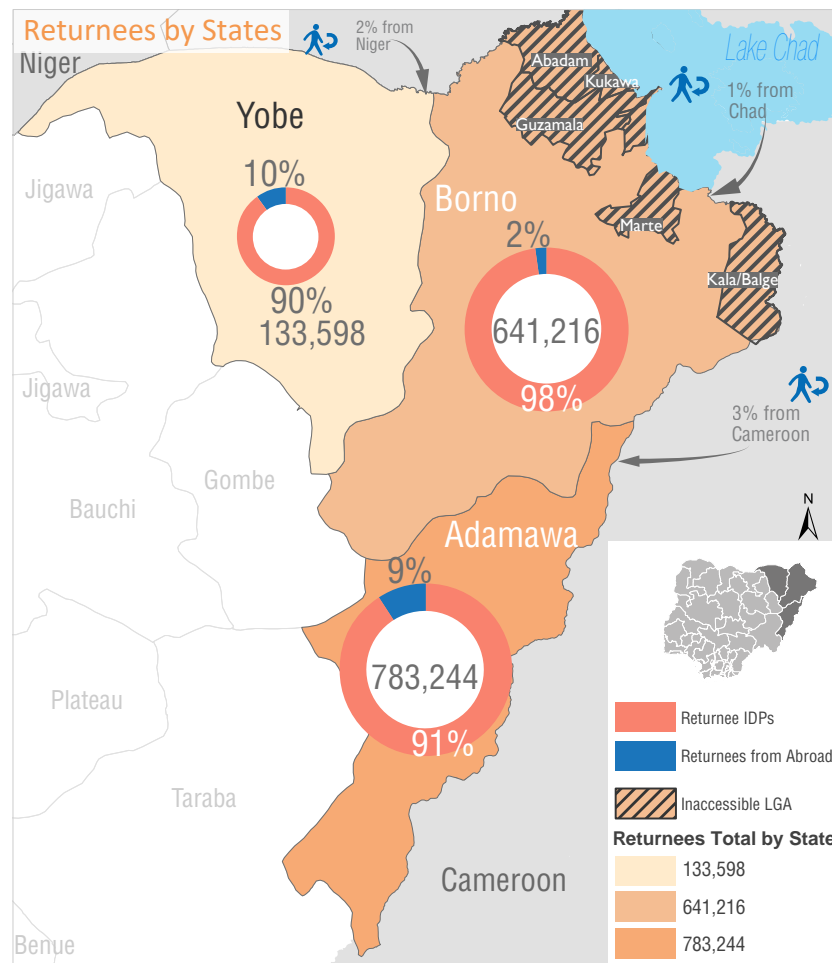
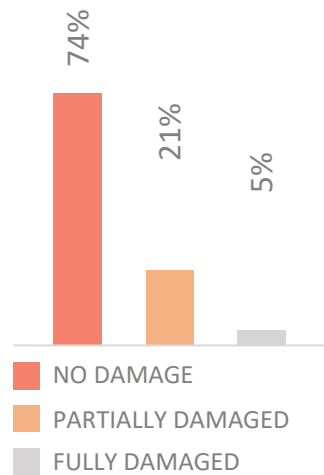


**94%** Returnee IDPs



**6%** Returnee Refugees

**Shelter condition in return areas**



**DISCLAIMER:** The depiction and use of boundaries, geographic names, and related data shown on maps are not warranted to be error free nor do they imply judgment on the legal status of any territory, or any endorsement or acceptance of such boundaries by IOM.