

DISPLACEMENT TRACKING MATRIX — NIGERIA EMERGENCY TRACKING TOOL (ETT)

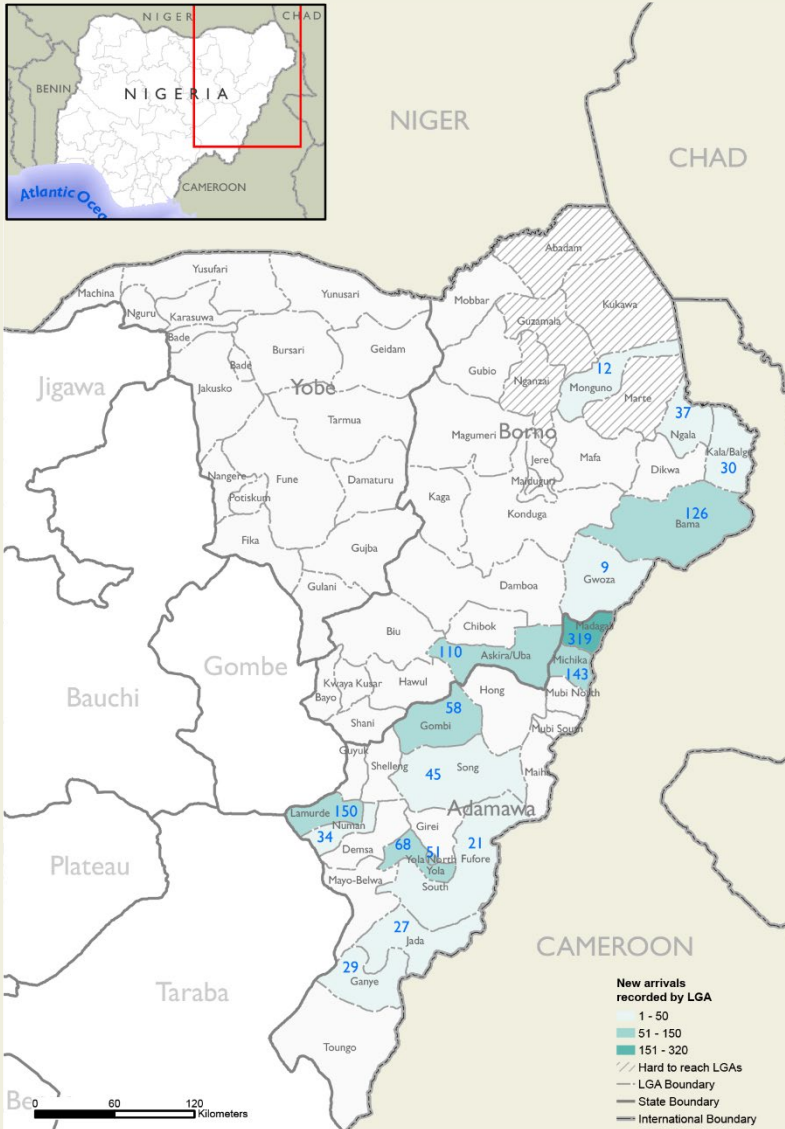
SUMMARY OF MOVEMENTS IN BORNO AND ADAMAWA STATES, 14 – 20 October 2024

DASHBOARD: 402

DATA COLLECTION: Week 42, 2024

DATE OF PUBLICATION: 25 October 2024

OVERVIEW OF DISPLACEMENTS

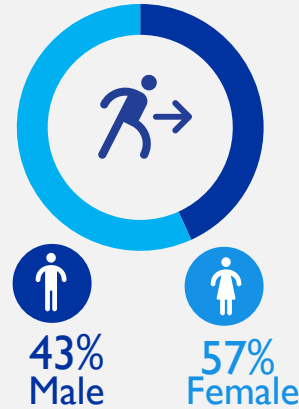


This map is for illustration purposes only. Names and boundaries on this map do not imply official endorsement or acceptance by IOM.

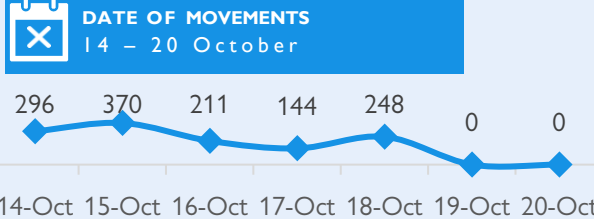
KEY FIGURES



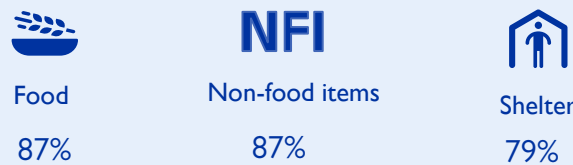
GENDER BREAKDOWN



DISPLACEMENT EVOLUTION



TOP REPORTED NEEDS*



TOP AREAS OF ORIGIN



*Multiple-choice response

METHODOLOGY

The DTM Emergency Tracking Tool (ETT) is deployed to track and collect information on large and sudden population movements, provide frequent updates on the scale of displacement and quantify the affected population when needed. As a sub-component of the mobility tracking methodology in Nigeria, ETT utilizes direct observations and a broad network of key informants to capture the best estimates of the affected population per location, enabling targeted humanitarian response planning.

LIMITATIONS

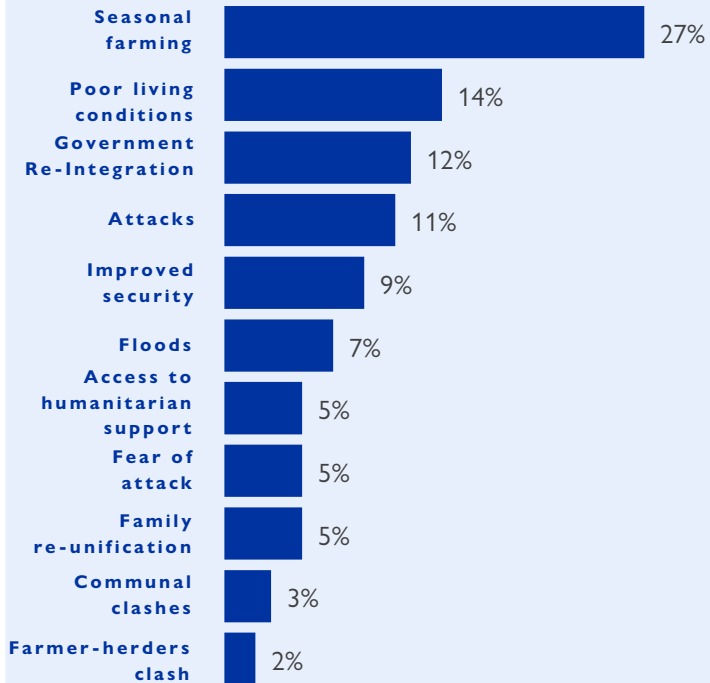
The ETT figures reported are not cumulative of all the affected persons thus far but rather provide a snapshot of the current displacement situation on the date indicated. The data and information reported on this dashboard are related solely to the movements caused by the triggers on page two between 14 – 20 October 2024.

ALERT SUMMARY

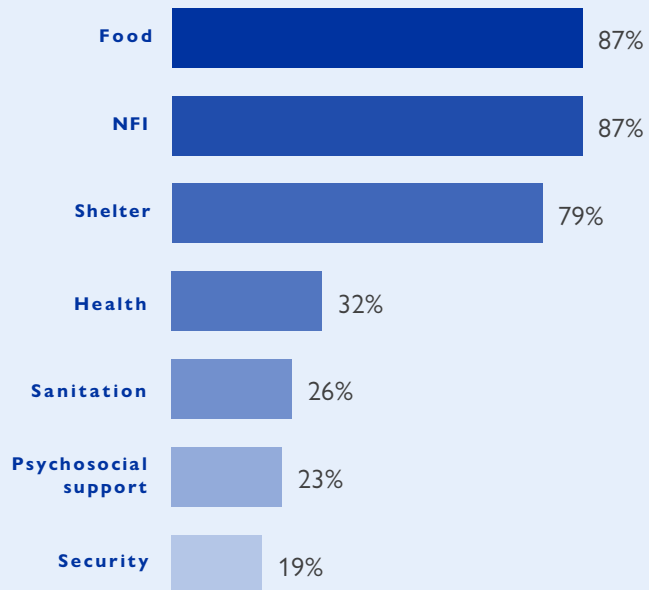
Between 14 and 20 October 2024, a total of 1,269 new arrivals were recorded at locations in Adamawa and Borno states. The new arrivals were recorded at locations in Askira/Uba, Bama, Gwozo, Kala Balge, Monguno and Ngala local government areas (LGAs) of the most conflict-affected Borno State, in Fufore, Gombi, Jada, Lamurde, Madagali, Michika, Numan, Yola North and Yola South LGA of Adamawa State.

ETT assessments identified the following movement triggers: seasonal farming (343 individuals or 27%), poor living conditions (180 individuals or 14%), government re-integration (148 individuals or 12%), attack (138 individuals or 11%), improved security (120 individuals or 9%), flood (83 individuals or 7%), access to humanitarian support (61 individuals or 5%), fear of attack (61 individuals or 5%), family re-unification (59 individuals or 5%), communal clashes (44 individuals or 3%) and farmer-herders clash (32 individual or 2%).

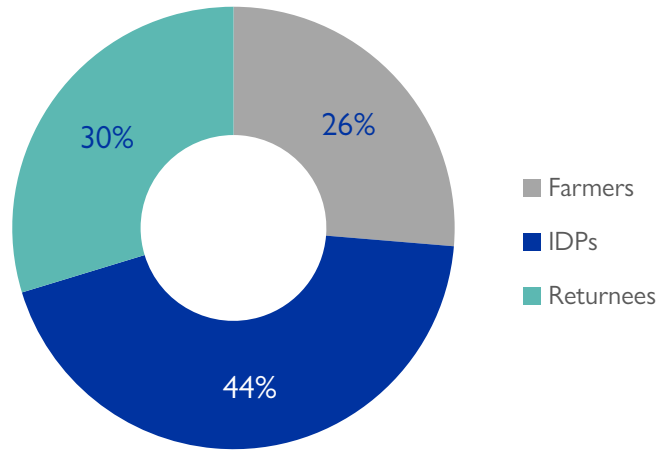
PERCENTAGE OF INDIVIDUALS BY MOVEMENT TRIGGER



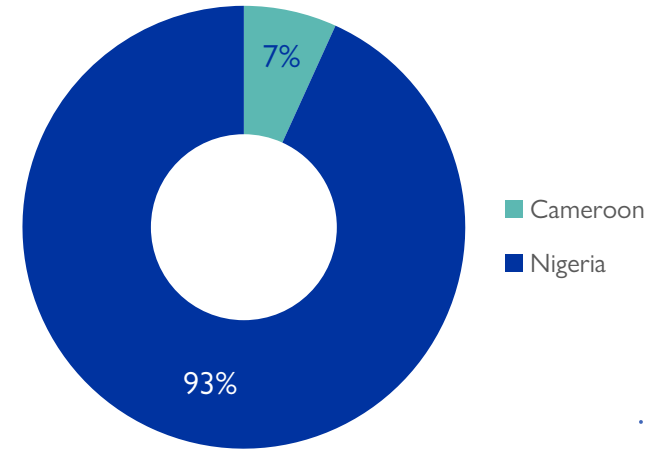
NEEDS EVOLUTION*



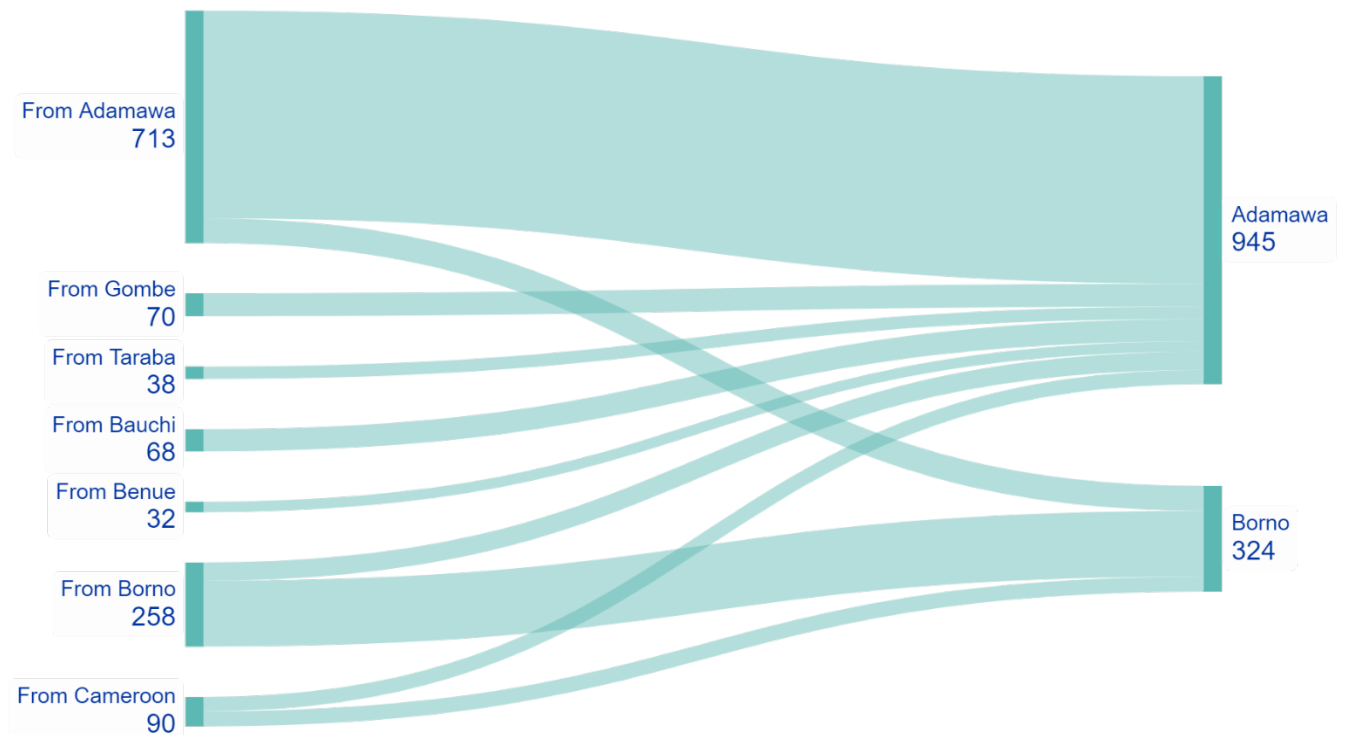
ARRIVING POPULATION



COUNTRY OF DEPARTURE OF THE POPULATION



FLOW OF POPULATION



*Multiple-choice response

DISPLACEMENT BREAKDOWN – all movements.

Arrival location			Movement location			Number of individuals
State	LGA	Ward	State	LGA	Ward	
Adamawa	Fufore	Beti	Adamawa	Yola South	Adarawo	5
		Ribadu		Fufore	Ribadu	16
	Lamurde	Lafiya	Adamawa	Lamurde	Rigange	80
		Ngbakowo	Gombe	Nafada	Nafada Central	50
		Gulak	Gombe	Billiri	Bare	20
	Madagali	K/Wuro Ngayandi	Cameroon	Mogode	Rhumsiki	44
		Madagali	Bauchi	Gamawa	Kafin Romi	38
		Pallam	Borno	Jere	Mairi	27
			Adamawa	Yola South	Ngurore	40
		Shelmi/Sukur/Vapura	Bauchi	Michika	Garta/Ghunchi	41
		Babel	Benue	Darazo	Darazo	30
			Taraba	Katsina-Ala	Mbayongo	32
		Duhu/ Shuwa	Borno	Jalingo	Turaki 'A'	38
	Michika	Jigalambu	Adamawa	Chibok	Kuburbula	29
		Michika I		Mubi North	Betso	17
		Wamblimi/Tilli		Hong	Kwarhi	37
		Bazza Margi		Mayo-Belwa	Nassarawo Jereng	41
		Madzi		Song	Song Gari	38
	Song	Sigire	Adamawa	Yola North	Alkalawa	10
		Karena	Adamawa	Gombi	Gombi North	45
	Yola North	Limawa	Adamawa	Fufore	Farang	15
		Jambutu	Adamawa	Demsa	Borrong	15
	Yola South	Bole Yolde Pate	Adamawa	Yola North	Jambutu	21
		Ngurore		Yola South	Bole Yolde Pate	28
		Adarawo		Numan	Imburu	17
	Gombi	Gombi South	Adamawa	Fufore	Karlaha	23
		Sabon Pegi	Adamawa	Mubi North	Lokuwa	58
Numan	Bare	Adamawa	Numan	Gamadio	11	
	Jada I		Lamurde	Mgbebungun	23	
Jada	Yelli	Adamawa	Demsa	Demsa	11	
	Ganye	Adamawa	Girei	Wuro Dole	16	
Borno	Askira / Uba	Ganye li	Adamawa	Michika	Sukumu/Tillijo	29
		Dille/Huyum	Adamawa	Yola South	Namtari	16
		Uda/Uvu		Hong	Gaya	29
		Zadawa/Hausari		Yola South	Gaya	16
		Mussa		Borno	Yola South	Ngurore
	Chul / Rumirgo	Adamawa		Askira/Uba	Uba	34
	Bama	Buduwa/Bula Chirabe	Borno	Hong	Hildi	8
		Shehuri/Hausari/Mairi		Bama	Dipchari/Jere/ Dar-Jamal/Ko	46
				Borno	Lawanti/Malam/Mastari/Abba	35
	Gwoza	Gwoza Wakane/Bulabulin	Borno	Gwoza	Yabiri Kura/Yabiri Gana/Chongolo	34
Gwoza	Gwoza Wakane/Bulabulin	Borno	Gwoza	Sabsabwa/Soy/Bulongu	11	
Kala Balge	Rann "A"	Cameroon	Makari	Dure/Wala/Warabe	6	
				Guduf Nagadiyo	3	
Monguno	Monguno	Borno	Abadam	Bodo	18	
				Afade	12	
Ngala	Ngala Ward	Borno	Konduga	Auno/Chabbol	11	
			Dikwa	Mallam Maja	10	
			Cameroon	Marwa	Bulgaram	16