

DISPLACEMENT TRACKING MATRIX — NIGERIA EMERGENCY TRACKING TOOL (ETT)

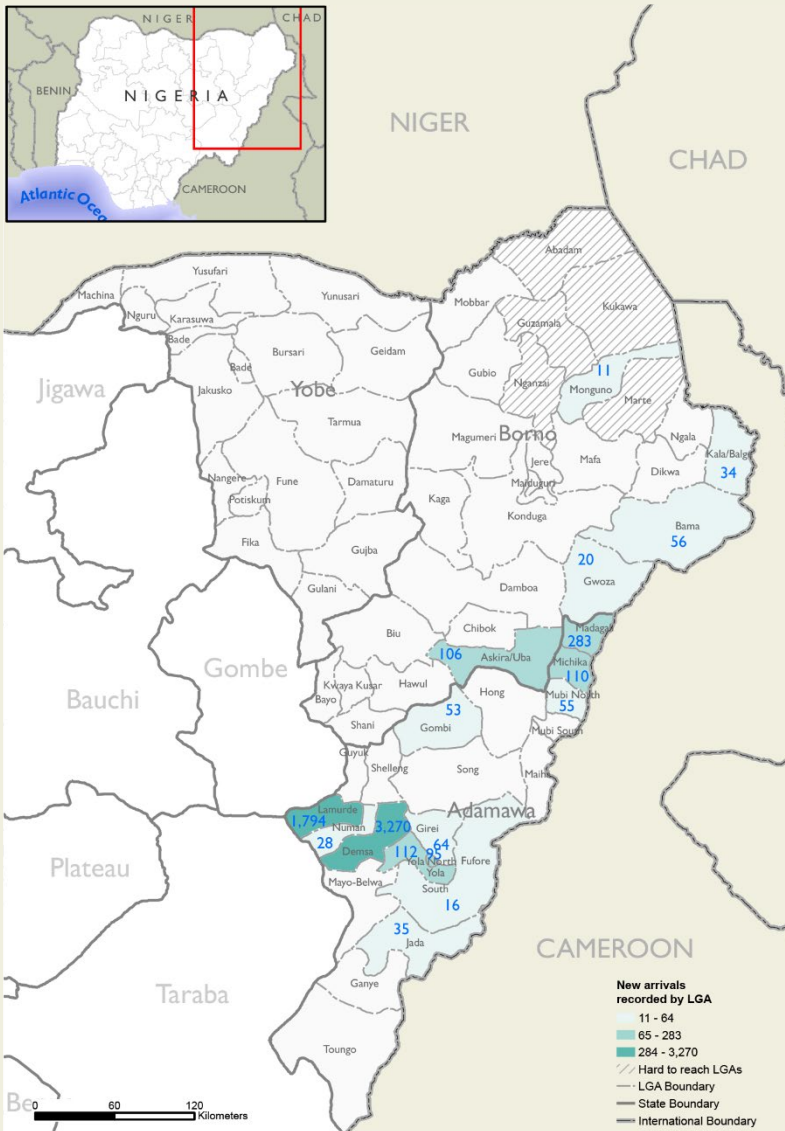
SUMMARY OF MOVEMENTS IN BORNO AND ADAMAWA STATES, 7 – 13 October 2024

DASHBOARD: 401

DATA COLLECTION: Week 41, 2024

DATE OF PUBLICATION: 18 October 2024

OVERVIEW OF DISPLACEMENTS

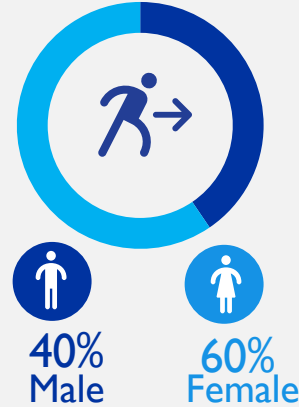


This map is for illustration purposes only. Names and boundaries on this map do not imply official endorsement or acceptance by IOM.

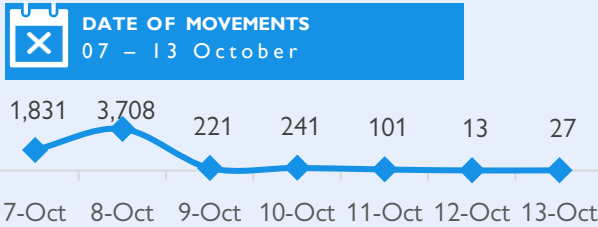
KEY FIGURES



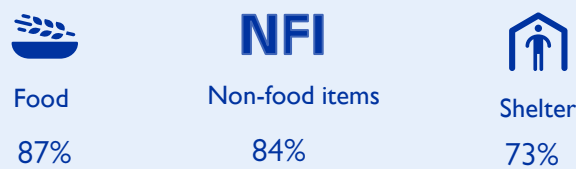
GENDER BREAKDOWN



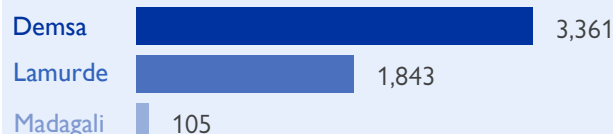
DISPLACEMENT EVOLUTION



TOP REPORTED NEEDS*



TOP AREAS OF ORIGIN



*Multiple-choice response

METHODOLOGY

The DTM Emergency Tracking Tool (ETT) is deployed to track and collect information on large and sudden population movements, provide frequent updates on the scale of displacement and quantify the affected population when needed. As a sub-component of the mobility tracking methodology in Nigeria, ETT utilizes direct observations and a broad network of key informants to capture the best estimates of the affected population per location, enabling targeted humanitarian response planning.

LIMITATIONS

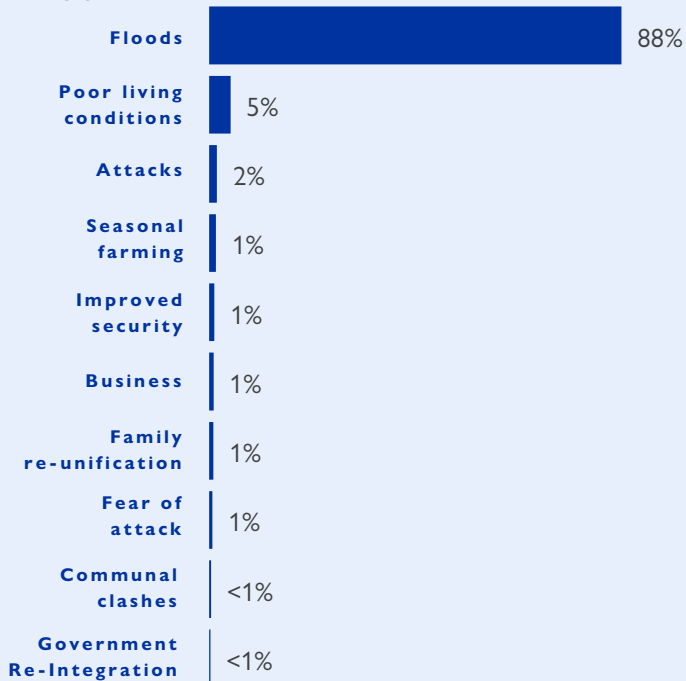
The ETT figures reported are not cumulative of all the affected persons thus far but rather provide a snapshot of the current displacement situation on the date indicated. The data and information reported on this dashboard are related solely to the movements caused by the triggers on page two between 7 – 13 October 2024.

ALERT SUMMARY

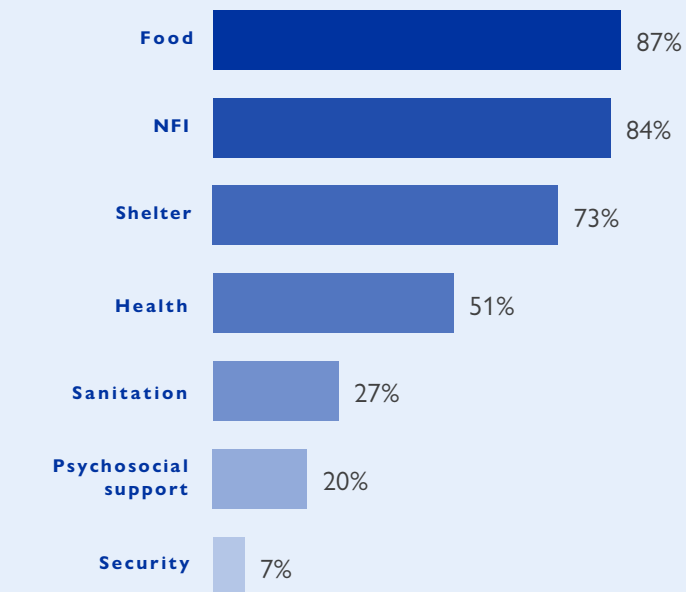
Between 7 and 13 October 2024, a total of 6,142 new arrivals were recorded at locations in Adamawa and Borno states. The new arrivals were recorded at locations in Askira/Uba, Bama, Gwoza, Kala Balge and Monguno local government areas (LGAs) of the most conflict-affected Borno State, in Demsa, Fufore, Girei, Gombi, Jada, Lamurde, Madagali, Michika, Mubi North, Numan, Yola North and Yola South LGA of Adamawa State.

ETT assessments identified the following movement triggers: flood (5,404 individuals or 88%), poor living conditions (280 individuals or 5%), attacks (103 individuals or 2%), seasonal farming (90 individuals or 1%), improved security (68 individuals or 1%), trade (57 individuals or 1%), family re-unification (56 individuals or 1%), fear of attack (42 individuals or 1%), communal clash (17 individuals or less than 1%) and government re-integration (3 individual or less than 1%).

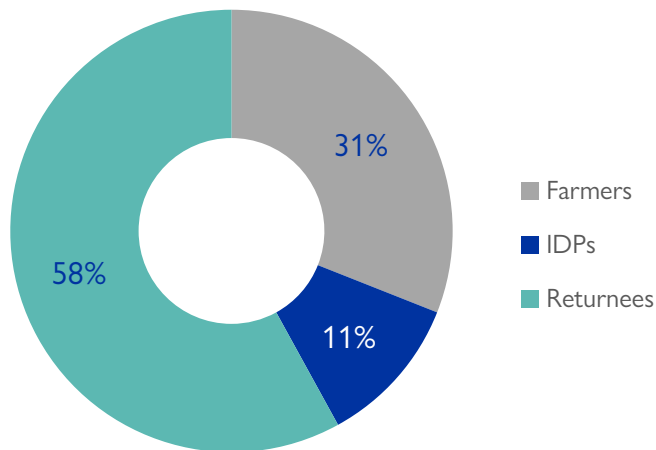
PERCENTAGE OF INDIVIDUALS BY MOVEMENT TRIGGER



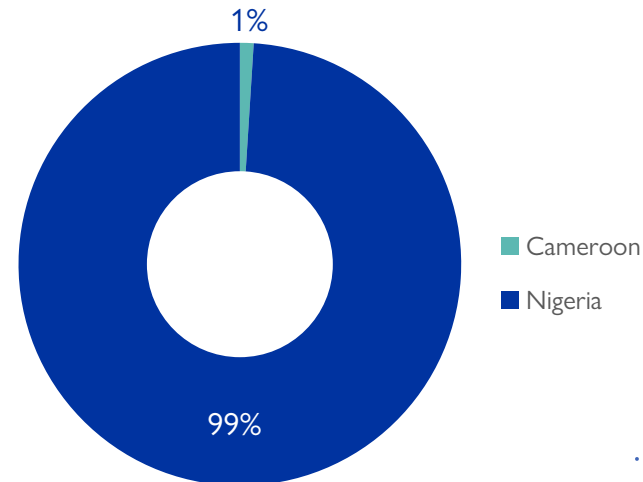
NEEDS EVOLUTION*



ARRIVING POPULATION



COUNTRY OF DEPARTURE OF THE POPULATION



NEW ARRIVALS SCREENING BY NUTRITION PARTNERS



76 MUAC

Children (6 – 59 months)
Screened for malnutrition.
Category of screened children.

Green: 68

Yellow: 7

Red: 1



MALNUTRITION SCREENING SUMMARY OF THE NEW ARRIVALS (CHILDREN 6 – 59 MONTHS)

Between 07 and 13 October 2024, an exhaustive nutrition screening using Mid-Upper Arm Circumference (MUAC) and oedema for acute malnutrition was conducted by sector partners for 76 children aged 6-59 months. Of the 76 children screened, the MUAC reading indicated that one was recorded in the red category, seven in the yellow category and 68 in the green category. No case of oedema was reported in the six LGAs assessed.

Among the 76 children screened, 34 arrived from neighbouring countries (34 in Mobbar LGA); of all the 34 children measured; 30 were in green, three were in yellow and one was in red category. All children found with acute malnutrition have been admitted to the treatment programme.

LGA	MUAC Categories						Total
	Green (≥12.5cm)		Yellow (11.5cm – 12.5cm)		Red (<11.5cm)		
	Inaccessible	Accessible	Inaccessible	Accessible	Inaccessible	Accessible	
Bama	11	0	2	0	0	0	13
Dikwa	0	9	0	1	0	0	10
Gwoza	5	0	1	0	0	0	6
Kala Balge	8	0	0	0	0	0	8
Mobbar	0	30	0	3	0	1	34
Monguno	5	0	0	0	0	0	5
Total	29	39	3	4	0	1	76

Please note, the data presented above are not surveillance results and should be interpreted with caution.

■ Nourished

■ Moderate Acute Malnutrition (MAM)

■ Severe Acute Malnutrition (SAM)

*Multiple-choice response

DISPLACEMENT BREAKDOWN – all movements.

State	Arrival location		Movement location			Number of individuals	
	LGA	Ward	State	LGA	Ward		
Adamawa	Demsa	Dilli	Adamawa	Demsa	Borrong	3,270	
	Fufore	Gurin	Adamawa	Song	Song Waje	10	
		Farang		Fufore	Pariya	6	
	Girei	Girei li	Adamawa	Lamurde	Dubwangun	36	
		Wuro Dole		Michika	Michika I	10	
		Girei I		Borno	Gwoza	Gwoza Wakane/Bulabulin	18
	Lamurde	Lafiya				150	
		Dubwangun	Adamawa	Lamurde	Dubwangun	1,589	
		Lamurde				55	
	Madagali	Madagali	Adamawa	Madagali	Wagga	49	
			Null	Maroua	Rhumsiki	56	
			Bauchi	Alkaleri	Alkaleri	49	
			Pallam	Borno	Marte	30	
			Wula	Adamawa	Yola North	Luggere	51
			Hyambula	Borno	Maiduguri M. C.	Gwange Iii	48
	Michika	Garta/Ghunchi			Gombi	Gombi North	15
		Minkisi/Wuro Ngiki	Adamawa		Yola South	Namtari	41
					Song	Song Gari	29
		Tumbara/Ngabili			Madagali	Pallam	25
	Mubi North	Lokuwa			Michika	Futudou/Futules	23
		Yelwa	Adamawa		Madagali	Madagali	13
		Betso		Cameroon	Mubi South	Lamorde	6
	Yola North				Marwa	Domayo	13
					Madagali	K/Wuro Ngayandi	18
		Jambutu	Adamawa		Yola North	Jambutu	37
					Demsa	Borrong	14
					Dilli	Dilli	26
	Yola South	Bole Yolde Pate			Lamurde	Rigange	13
					Yola South	Bole Yolde Pate	29
		Namtari	Adamawa		Demsa	Borrong	19
					Dilli	Dilli	24
					Numan	Imburu	27
Gombi	Gombi South	Adamawa		Mubi South	Gude	53	
Numan	Sabon Pegi	Adamawa		Mayo - Belwa	Mayo Farang	28	
Jada	Jada li			Jada	Jada li	17	
	Koma I	Adamawa		Demsa	Nassarawo Demsa	8	
	Jada I			Gombi	Garkida	10	
Askira/Uba	Husara/Tampul	Adamawa		Mubi South	Kwaja	13	
	Ngohi	Borno		Askira / Uba	Uba	37	
	Ngulde	Adamawa		Gombi	Gombi North	56	
Bama	Shehuri/Hausari/Mairi	Borno		Bama	Lawanti/Malam/Mastari/Abba	56	
Gwoza	Gwoza Wakane/Bulabulin				Dure/Wala/Warabe	1	
					Johode/Chikide/Kughum	2	
	Pulka/Bokko	Borno	Gwoza		Dure/Wala/Warabe	11	
					Johode/Chikide/Kughum	6	
Kala Balge			Borno	Mafa	Limanti	26	
	Rann "A"		Cameroon	Makari	Afade	3	
			Cameroon	Marwa	Bodo	5	
Monguno			Borno	Kukawa	Kukawa	4	
				Abadam	Arege	7	