



## MOBILITY SNAPSHOT – Round 54

Report Production Date: 17 October 2024 | Data collected up till 4 pm on 16 October 2024

### Overview

The International Organization for Migration (IOM) conducts daily monitoring of population movements to support preparedness and response efforts. This work is carried out in partnership with the Disaster Risk Management Unit, technically supported by the United Nations Development Programme, to triangulate and verify data from IOM's mobility tracking exercise and the Lebanese Red Cross household registration exercise.

### IDP count – By date



### IDPs by district of arrival and district of origin



**779,613** (52% female and 48% male)  
Total displaced individuals



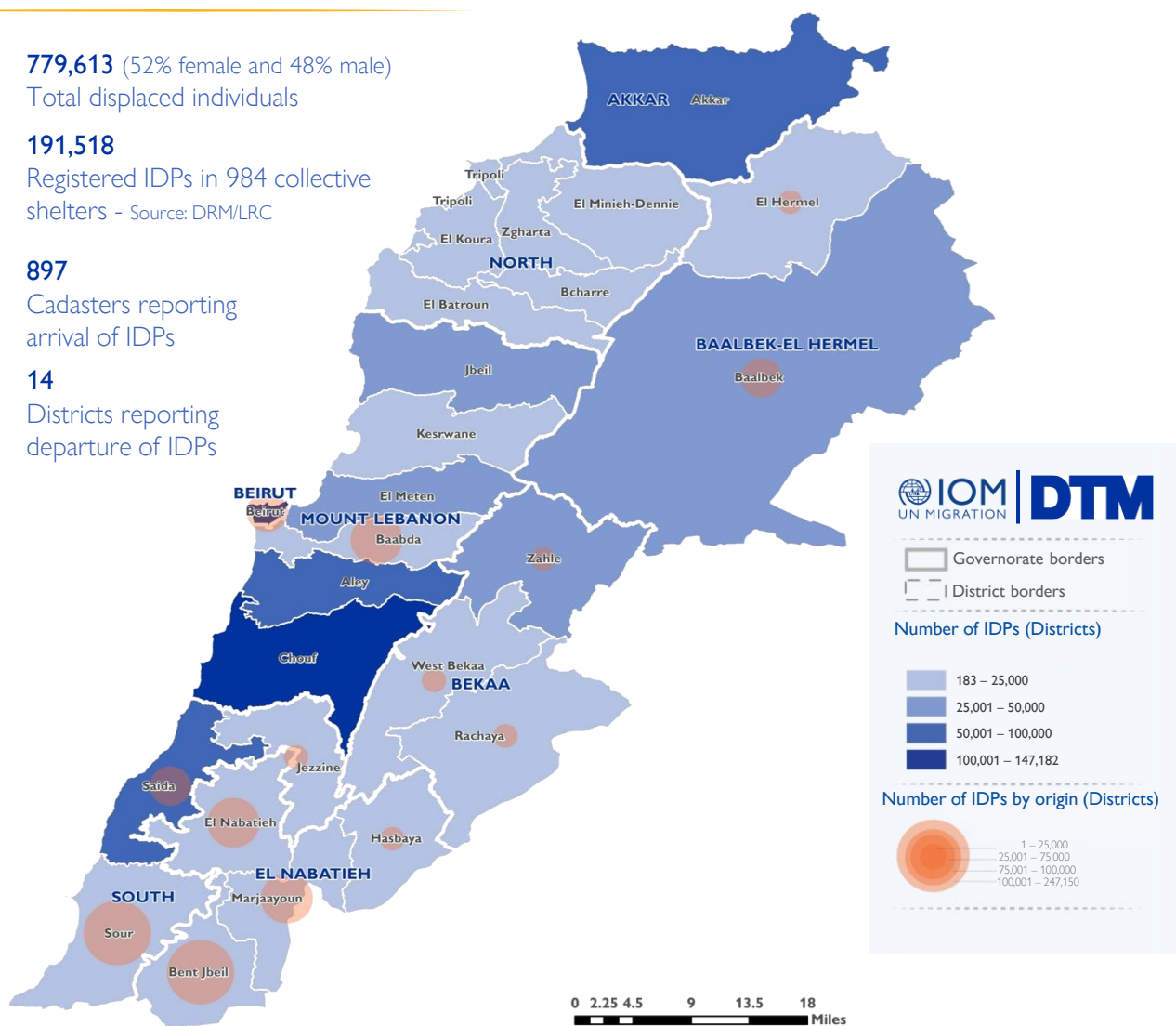
**191,518**  
Registered IDPs in 984 collective shelters - Source: DRM/LRC



**897**  
Cadasters reporting arrival of IDPs



**14**  
Districts reporting departure of IDPs



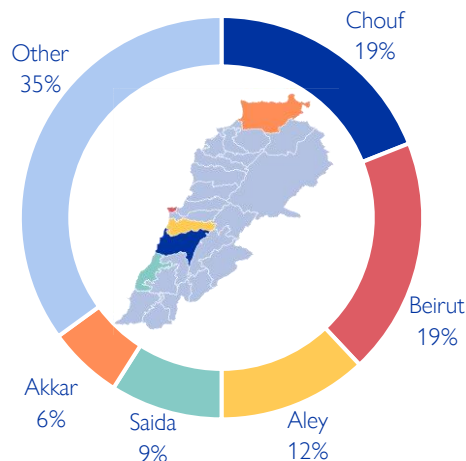
This map is for illustration purposes only. Names and boundaries on this map do not imply official endorsement or acceptance by IOM.

\*DRM/LRC conducts household level registration for IDPs to inform direct assistance. This complements IOM's mobility tracking which captures an estimate of the total IDP population to inform national preparedness and response planning, as well as resource mobilisation.

## Displacement within Lebanon – By district of arrival

Governorate	District	# of Cadasters	IDPs
Mount Lebanon	Chouf	83	147,182
Beirut	Beirut	11	145,620
Mount Lebanon	Aley	62	94,950
South	Saida	29	66,515
Akkar	Akkar	131	50,479
Mount Lebanon	Jbeil	67	38,590
Baalbek-El Hermel	Baalbek	28	35,756
Mount Lebanon	El Meten	74	33,471
Bekaa	Zahle	38	27,335
Mount Lebanon	Baabda	45	23,960
North	El Minieh-Dennie	43	16,503
North	Zgharta	26	14,893
Mount Lebanon	Kesrwane	50	14,014
Bekaa	West Bekaa	24	13,080
North	Tripoli	11	12,534
North	El Koura	37	12,166
South	Sour	2	7,872
South	Jezzine	31	7,759
North	El Batroun	51	6,399
Bekaa	Rachaya	19	3,931
El Nabatieh	Hasbaya	11	2,259
North	Bcharre	13	1,736
El Nabatieh	El Nabatieh	7	1,246
El Nabatieh	Bent Jbeil	1	730
Baalbek-El Hermel	El Hermel	1	450
El Nabatieh	Marjaayoun	2	183
<b>Total</b>		<b>897</b>	<b>779,613</b>

Chart 1: IDPs distribution by district of arrival

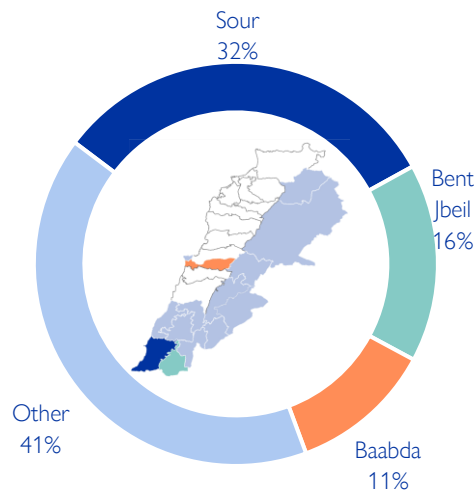


As of 16 October, Lebanon has recorded 779,613 internally displaced persons (IDPs), showing around 4% increase since 13 October. IDPs have sought safety in 1,067 locations (villages or neighbourhoods) across 897 cadasters throughout Lebanon. Displacement has been observed in 26 out of the 26 districts across all eight governorates. 62% of the IDPs are in five districts out of the total 26 districts hosting IDPs—specifically, Chouf, Beirut, Aley, Saida, and Akkar.

## Displacement within Lebanon – By district of departure

Governorate	District	IDPs
South	Sour	247,150
El Nabatieh	Bent Jbeil	123,863
Mount Lebanon	Baabda	89,522
El Nabatieh	Marjaayoun	83,603
El Nabatieh	El Nabatieh	79,393
Baalbek-El Hermel	Baalbek	60,460
South	Saida	42,675
Beirut	Beirut	27,293
El Nabatieh	Hasbaya	7,969
Baalbek-El Hermel	El Hermel	7,694
Bekaa	West Bekaa	6,196
South	Jezzine	2,038
Bekaa	Zahle	1,294
Bekaa	Rachaya	463
<b>Total</b>		<b>779,613</b>

Chart 2: IDPs distribution by district of departure



The majority of IDPs (59%) originate from three districts. These three districts span along the Southern border of Lebanon. Specifically, 32% are from Sour, 16% are Bent Jbeil, and 11% are from Baabda. The remaining 41% originate from 11 different districts.

## New displacement within Lebanon – By district of arrival

Governorate	District	# of Cadasters	IDPs
South	Saida	15	19,673
Mount Lebanon	Chouf	25	11,889
Mount Lebanon	Jbeil	17	6,305
North	Tripoli	6	2,972
Mount Lebanon	Baabda	15	2,680
Mount Lebanon	Aley	16	2,563
Akkar	Akkar	57	1,830
Bekaa	Zahle	3	1,652
Mount Lebanon	El Meten	21	1,382
Beirut	Beirut	3	1,236
Baalbek-El Hermel	Baalbek	4	1,010
North	Bcharre	3	701
Bekaa	West Bekaa	3	515
North	El Batroun	14	394
North	El Koura	7	226
North	El Minieh-Dennie	8	220
Mount Lebanon	Kesrwane	5	165
North	Zgharta	1	100
Bekaa	Rachaya	2	100
El Nabatieh	Hasbaya	2	46
El Nabatieh	Bent Jbeil	1	25
South	Jezzine	2	14
<b>Total</b>		<b>230</b>	<b>55,698</b>

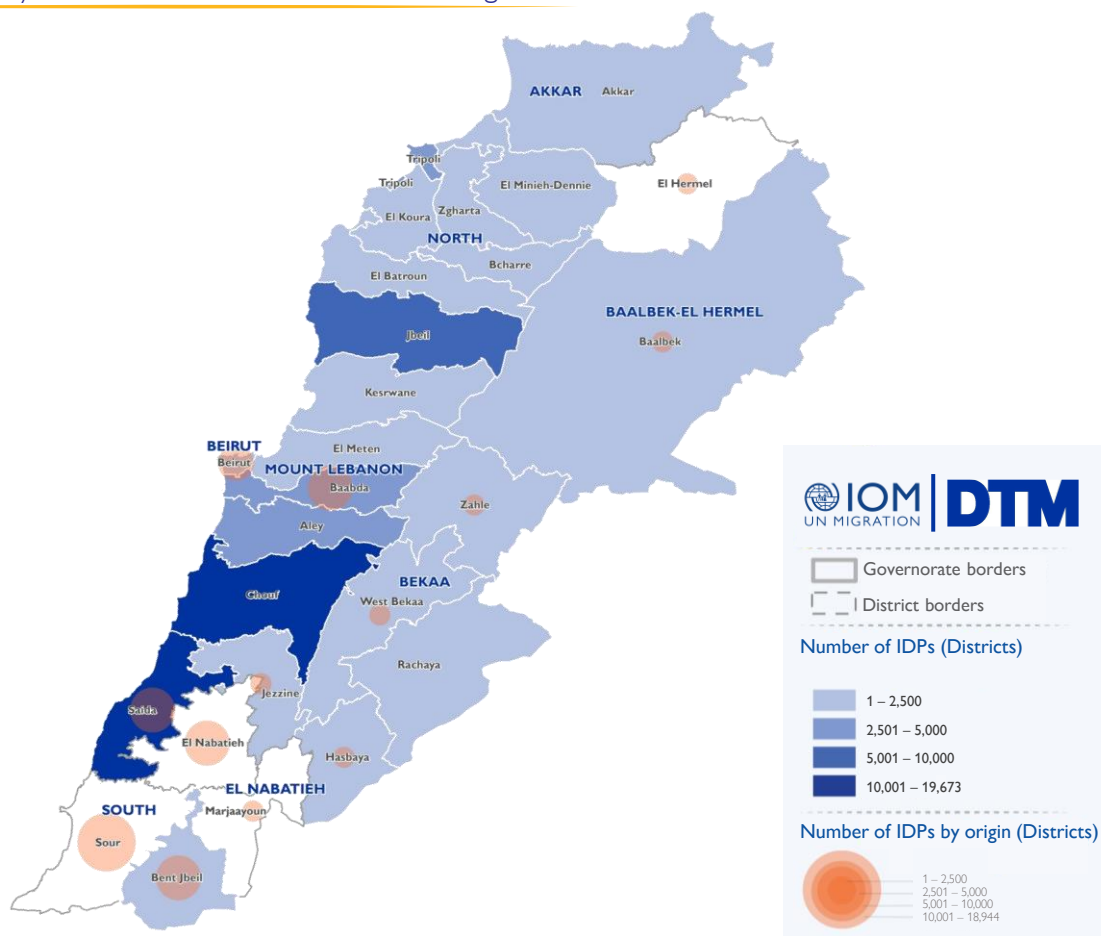
In the past week, there have been 55,698 new displacements. These individuals might be experiencing displacement for the first time or undergoing secondary movement.

The majority of newly displaced individuals come from Sour (34%), Saida (13%), Baabda (12%), Bent Jbeil (12%), and El Nabatieh (10%) districts. The remaining 18% relocated from Beirut, Baalbek, Marjaayoun, Hasbaya, Zahle, El Hermel, Jezzine, and West Bekaa districts.

Over the past week, the top five destinations (districts) for newly displaced individuals were Saida (35%), Chouf (21%), Jbeil (11%), Tripoli (5%), and Baabda (5%).

The increase in total number of IDPs may not always align with the number of new arrivals within a specific period. This difference often occurs when Key Informants (KIs) report cumulative totals that include previously uncounted IDPs.

## Newly arrived IDPs by cadaster of arrival and district of origin



This map is for illustration purposes only. Names and boundaries on this map do not imply official endorsement or acceptance by IOM.

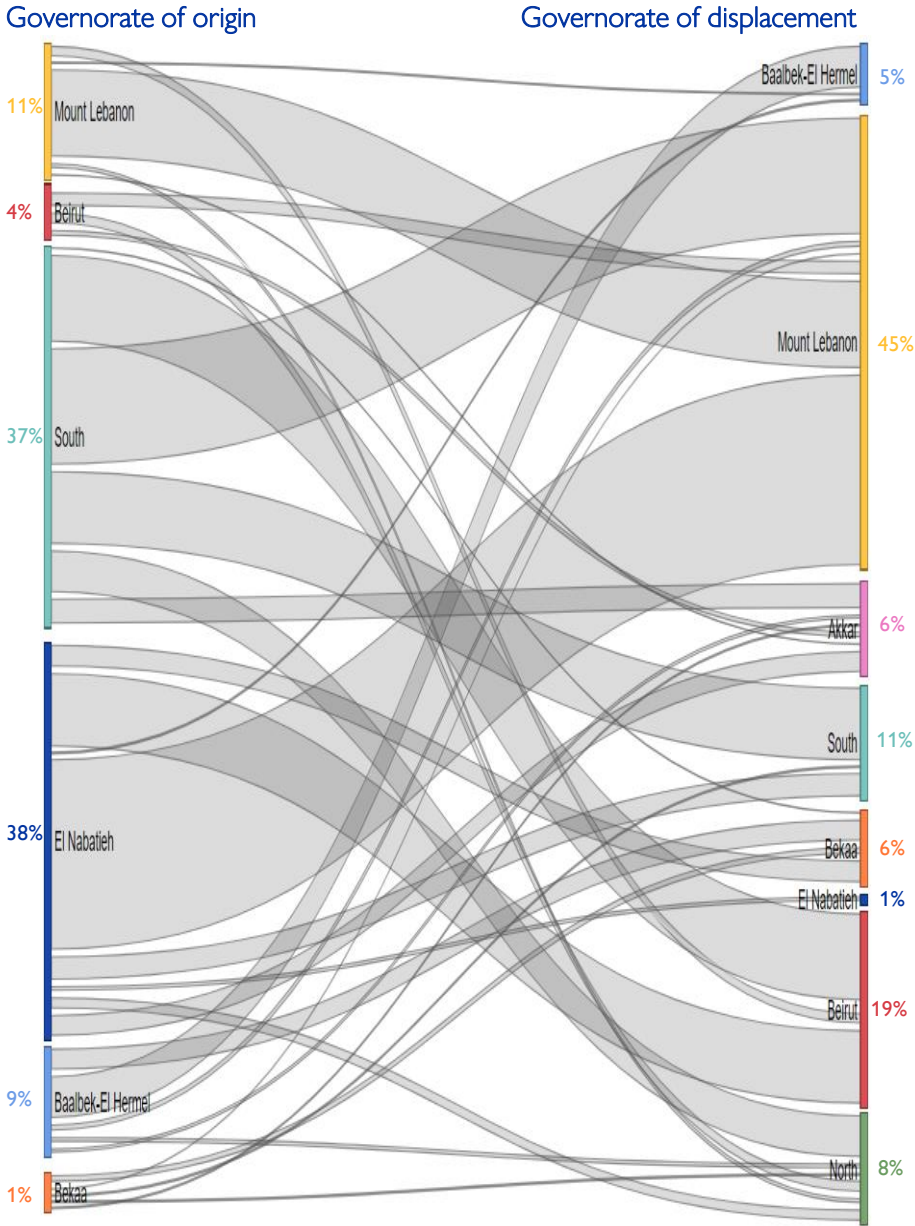
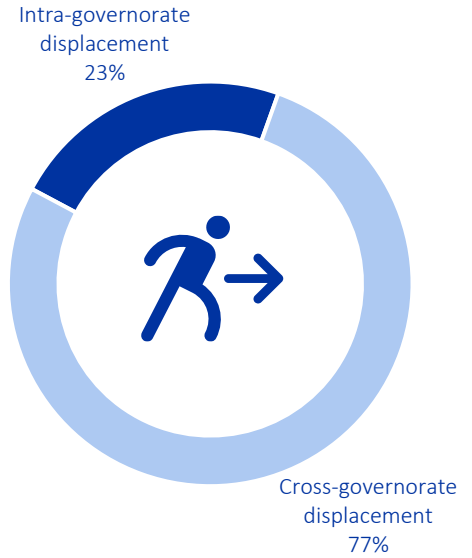
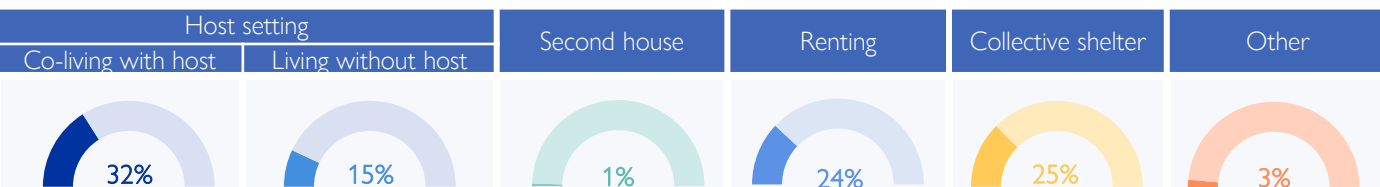


Chart 3: Displacement trends



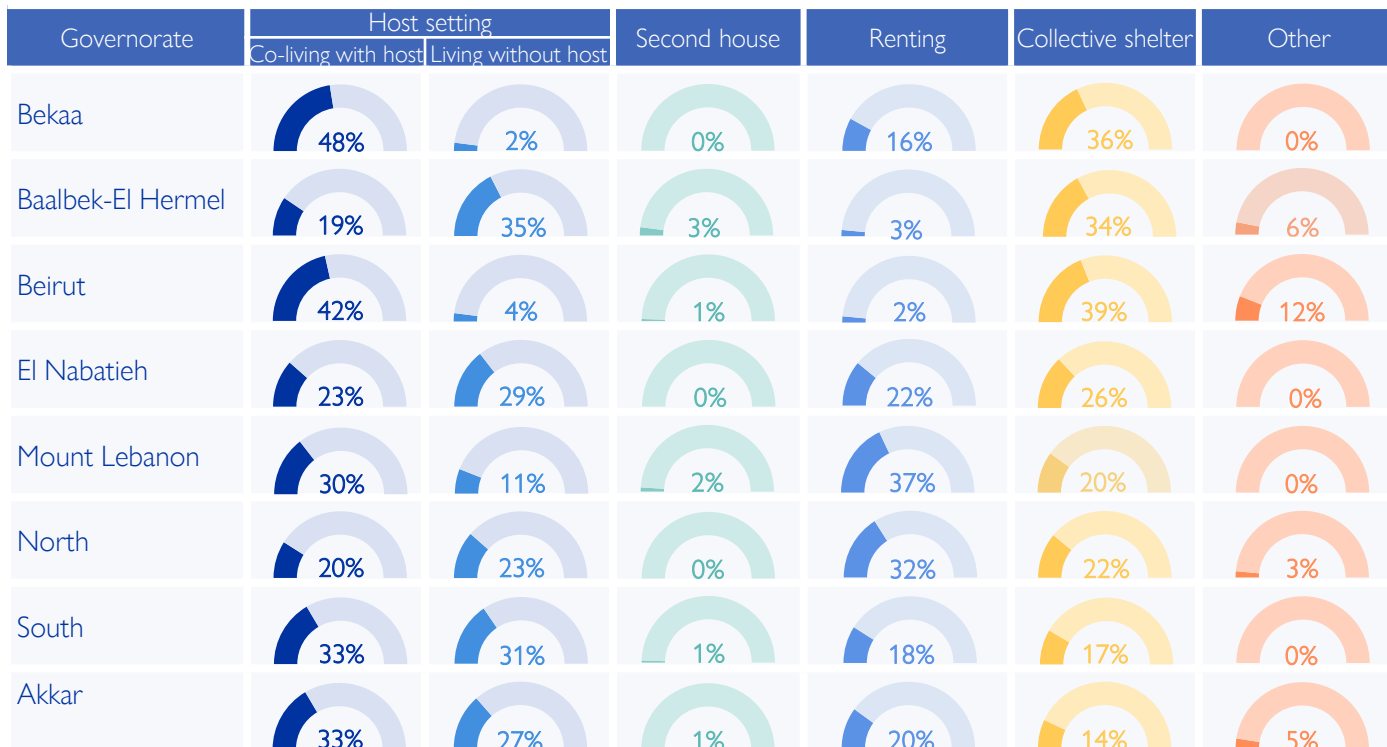
Overall, 77% of the displacement has occurred outside the boundaries of the IDPs' governorate of origin. While 38% (294,828) of the IDPs originate from El Nabatieh, of this population 99% fled to locations outside the boundaries of the governorate. Similarly, in the South governorate, where 37% (291,863) of IDPs originated, 79% of these IDPs chose to move outside the boundaries of the governorate. However, in Mount Lebanon governorate, where 11% (89,522) of IDPs originated, 83% of these IDPs chose to move internally within the boundaries of the governorate.

## IDPs distribution by shelter type – By Governorate



Around 47% of IDPs are currently living in host settings, around 25% are housed in 984 collective shelters, while 24% have opted for rental housing. Another 1% have relocated to their secondary residences. Meanwhile, 3% are categorized under “other”, this includes unfinished buildings, tents, parks, on the streets, or self-settled sites.

Of the 47% in host settings, 253,100 are co-living with non-internally displaced families, while 113,796 reside separately. Notably, 69% of the 366,896 individuals in host settings are living in overcrowded conditions according to the perception of IOM DTM key informants.



## Displacement demographics

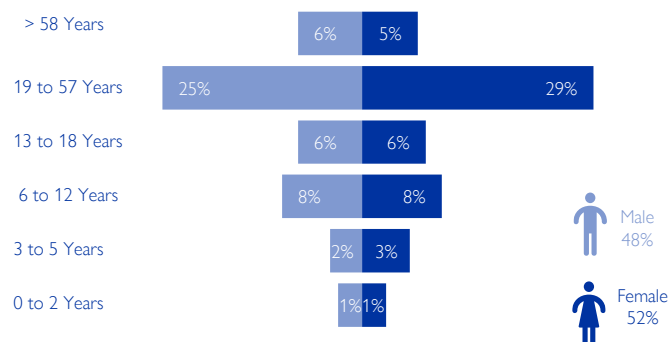


Chart 4: Displacement demographics – Based on Round 45

35% of IDPs are children (< 18 years), while 34% are female adults and 31% are male adults.

Note: These figures represent sample data of 2 households per location provided by key informants and do not reflect the entire IDP population in each area.

## Methodology

The objective of the Mobility Snapshot is to support the humanitarian community in preparedness and response planning. Multi-layered data is routinely captured through Rounds using a suite of methodological tools designed to track and monitor displacement. These tools are in line with the [DTM Global Methodological Framework](#).

Data is collected nationwide through a combination of face-to-face and remote data collection methods, utilizing a network of over 50 enumerators and 1,500 key informants. These key informants consist of government officials, mukhtars, community representatives, and neighborhood focal points.

The following citation is required when using any data and information included in this information product: "International Organization for Migration (IOM), October 2024. DTM Mobility Snapshot, Round 54 IOM, Lebanon". For more information on terms and conditions of DTM reports and information products, please refer to <https://dtm.iom.int/terms-and-conditions>.