



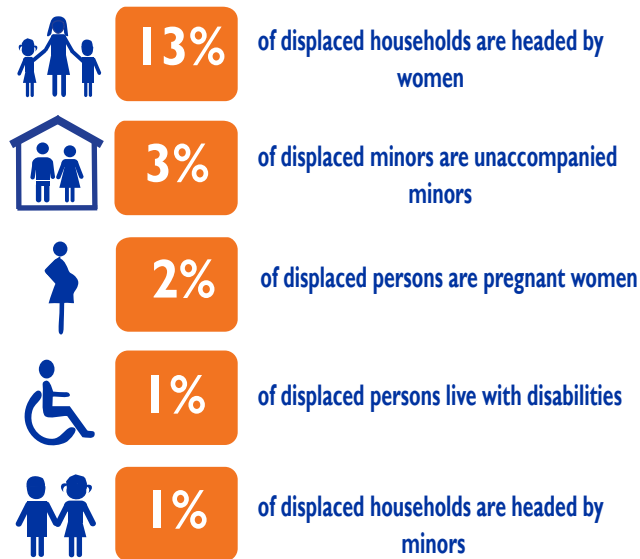
134,054 IDPs*
29,536 Displaced Households

*Internally Displaced Persons

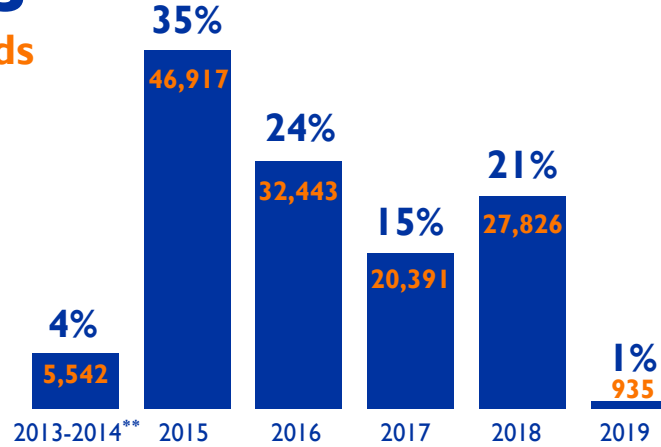
IDP DEMOGRAPHIC



PARTICULARLY VULNERABLE GROUPS



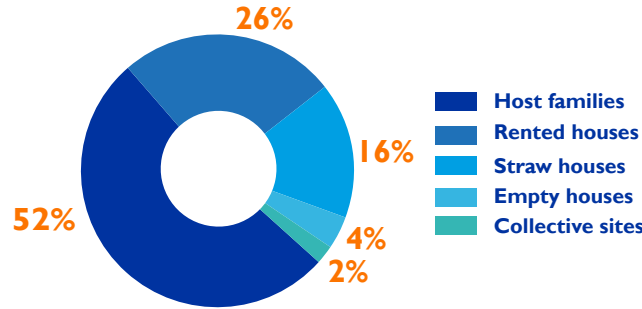
PERIODS OF DISPLACEMENT*



*Currently displaced IDPs

** Numbers of IDPs displaced in 2013-2014 are taken from December 2018 data

ACCOMMODATION TYPES

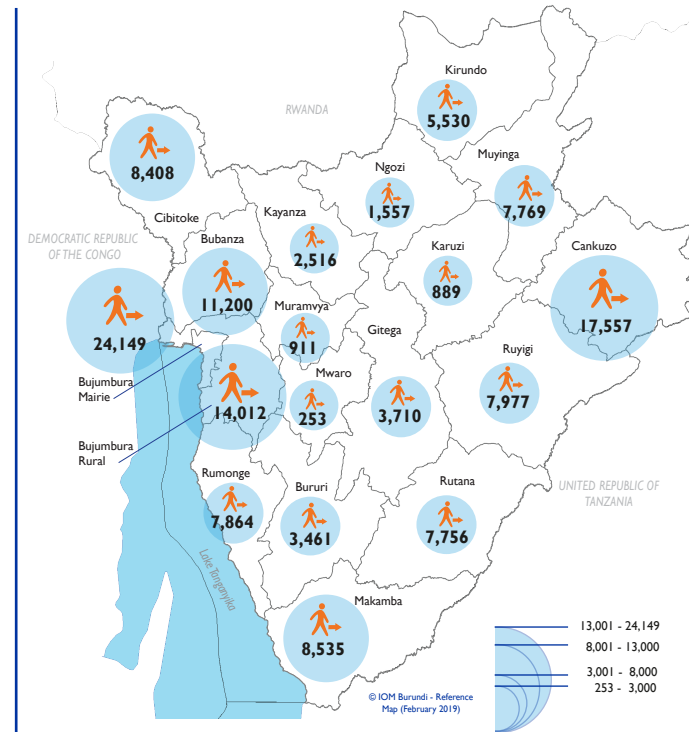


DISPLACEMENT TRENDS

Number of IDPs present in Burundi



PRESENCE OF IDPs BY PROVINCE



This map is for illustration purposes only. Names and boundaries on this map do not imply official endorsement or acceptance by IOM. Source: IOM, IGBU

DISPLACEMENT REASONS*



* These percentages refer to data for IDPs displaced since 2015

