



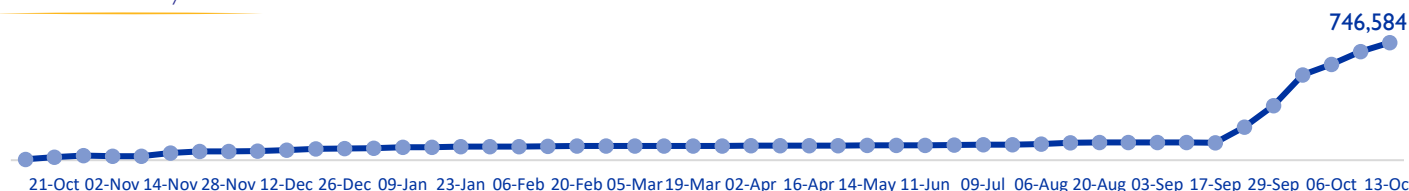
MOBILITY SNAPSHOT – Round 53

Report Production Date: 14 October 2024 | Data collected up till 4 pm on 13 October 2024

Overview

The International Organization for Migration (IOM) conducts daily monitoring of population movements to support preparedness and response efforts. This work is carried out in partnership with the Disaster Risk Management Unit, technically supported by the United Nations Development Programme, to triangulate and verify data from IOM's mobility tracking exercise and the Lebanese Red Cross household registration exercise.

IDP count – By date



IDPs by district of arrival and district of origin



746,584 (52% female and 48% male)
Total displaced individuals



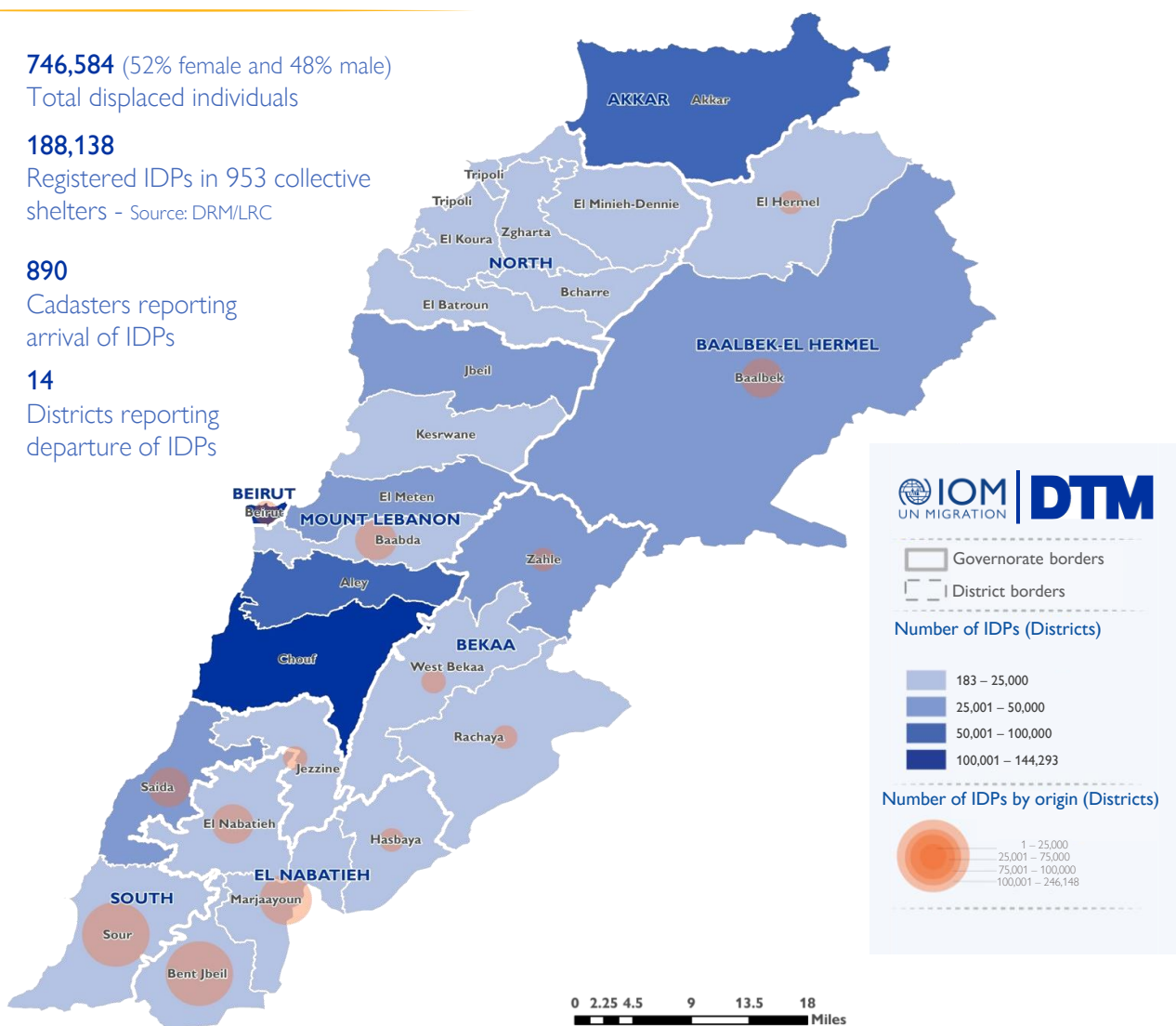
188,138
Registered IDPs in 953 collective shelters - Source: DRM/LRC



890
Cadasters reporting arrival of IDPs



14
Districts reporting departure of IDPs



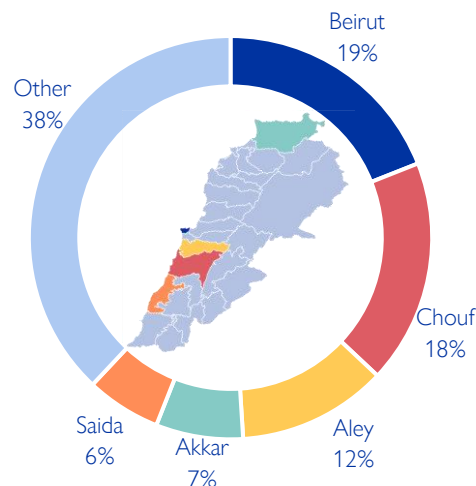
This map is for illustration purposes only. Names and boundaries on this map do not imply official endorsement or acceptance by IOM.

*DRM/LRC conducts household level registration for IDPs to inform direct assistance. This complements IOM's mobility tracking which captures an estimate of the total IDP population to inform national preparedness and response planning, as well as resource mobilisation.

Displacement within Lebanon – By district of arrival

Governorate	District	# of Cadasters	IDPs
Beirut	Beirut	11	144,293
Mount Lebanon	Chouf	82	137,378
Mount Lebanon	Aley	62	92,153
Akkar	Akkar	133	51,880
South	Saida	28	47,146
Baalbek-El Hermel	Baalbek	26	37,132
Mount Lebanon	El Meten	74	33,870
Mount Lebanon	Jbeil	67	32,908
Bekaa	Zahle	38	26,310
North	El Minieh-Dennie	43	23,420
Mount Lebanon	Baabda	45	22,008
North	Zgharta	25	14,742
Mount Lebanon	Kesrwan	51	14,390
Bekaa	West Bekaa	23	12,445
North	El Koura	36	12,233
North	Tripoli	11	11,957
South	Sour	2	8,177
South	Jezzine	31	7,860
North	El Batroun	51	6,291
Bekaa	Rachaya	18	4,153
El Nabatieh	Hasbaya	11	2,239
North	Bcharre	12	1,343
El Nabatieh	El Nabatieh	6	916
El Nabatieh	Bent Jbeil	1	707
Baalbek-El Hermel	El Hermel	1	450
El Nabatieh	Marjaayoun	2	183
Total		890	746,584

Chart 1: IDPs distribution by district of arrival

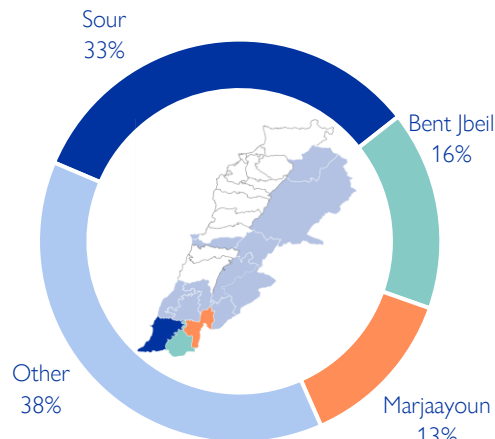


As of 13 October, Lebanon has recorded 746,584 internally displaced persons (IDPs), showing around 8% increase since 9 October. IDPs have sought safety in 1,090 locations (villages or neighbourhoods) across 890 cadasters throughout Lebanon. Displacement has been observed in 26 out of the 26 districts across all eight governorates. 62% of the IDPs are in five districts out of the total 26 districts hosting IDPs—specifically, Beirut, Chouf, Aley, Akkar, and Saida.

Displacement within Lebanon – By district of departure

Governorate	District	IDPs
South	Sour	246,148
El Nabatieh	Bent Jbeil	119,532
El Nabatieh	Marjaayoun	93,499
El Nabatieh	El Nabatieh	74,696
Mount Lebanon	Baabda	62,266
Baalbek-El Hermel	Baalbek	55,813
South	Saida	43,036
Beirut	Beirut	23,829
El Nabatieh	Hasbaya	9,272
Baalbek-El Hermel	El Hermel	8,128
Bekaa	West Bekaa	5,889
South	Jezzine	2,353
Bekaa	Zahle	1,183
Bekaa	Rachaya	940
Total		746,584

Chart 2: IDPs distribution by district of departure



The majority of IDPs (62%) originate from three districts. These three districts span along the Southern border of Lebanon. Specifically, 33% are from Sour, 16% are Bent Jbeil, and 13% are from Marjaayoun. The remaining 38% originate from 11 different districts.

New displacement within Lebanon – By district of arrival

Governorate	District	# of Cadasters	IDPs
Mount Lebanon	Chouf	22	15,507
Beirut	Beirut	6	10,370
North	El Minieh-Dennie	12	9,102
Bekaa	Zahle	9	4,823
Mount Lebanon	El Meten	15	3,913
Baalbek-El Hermel	Baalbek	6	3,340
Akkar	Akkar	48	3,110
Mount Lebanon	Aley	22	3,082
South	Saida	7	3,054
Mount Lebanon	Jbeil	15	2,449
Mount Lebanon	Baabda	12	804
South	Jezzine	10	719
Mount Lebanon	Kesrwane	7	685
North	Tripoli	5	558
North	El Batroun	9	495
Bekaa	Rachaya	6	429
North	El Koura	6	310
El Nabatieh	Bent Jbeil	1	300
Bekaa	West Bekaa	4	112
El Nabatieh	Hasbaya	3	104
South	Sour	1	100
El Nabatieh	Marjaayoun	1	67
North	Bcharre	3	18
Total		230	63,451

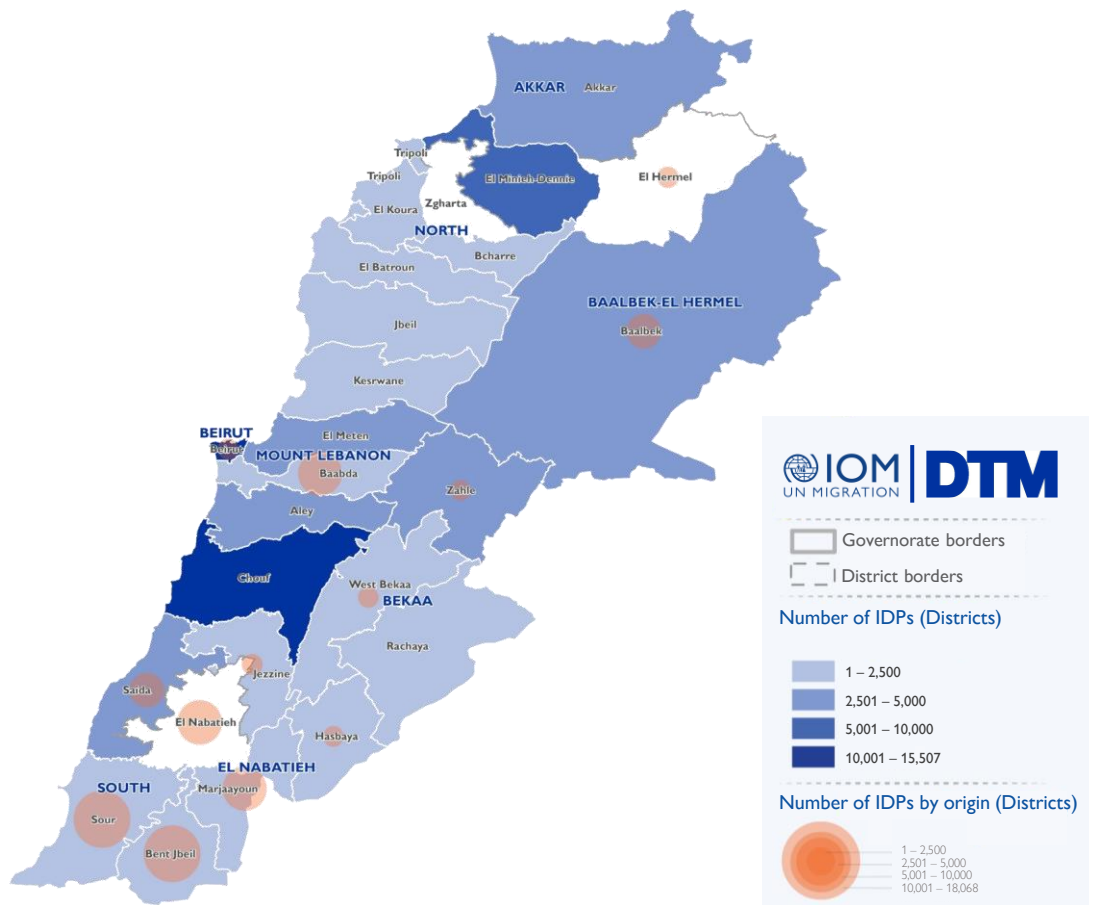
In the past week, there have been 63,451 new displacements. These individuals might be experiencing displacement for the first time or undergoing secondary movement.

The majority of newly displaced individuals come from Sour (28%), Bent Jbeil (22%), El Nabatieh (12%), Baabda (11%), and Marjaayoun (9%) districts. The remaining 13% relocated from Baalbek, Saida, Beirut, El Hermel, Hasbaya, West Bekaa, Jezzine, and Zahle districts.

Over the past week, the top five destinations (districts) for newly displaced individuals were Chouf (24%), Beirut (16%), El Minieh-Dennie (14%), Zahle (8%), and El Meten (6%).

The increase in total number of IDPs may not always align with the number of new arrivals within a specific period. This difference often occurs when Key Informants (KIs) report cumulative totals that include previously uncounted IDPs.

Newly arrived IDPs by cadaster of arrival and district of origin



This map is for illustration purposes only. Names and boundaries on this map do not imply official endorsement or acceptance by IOM.

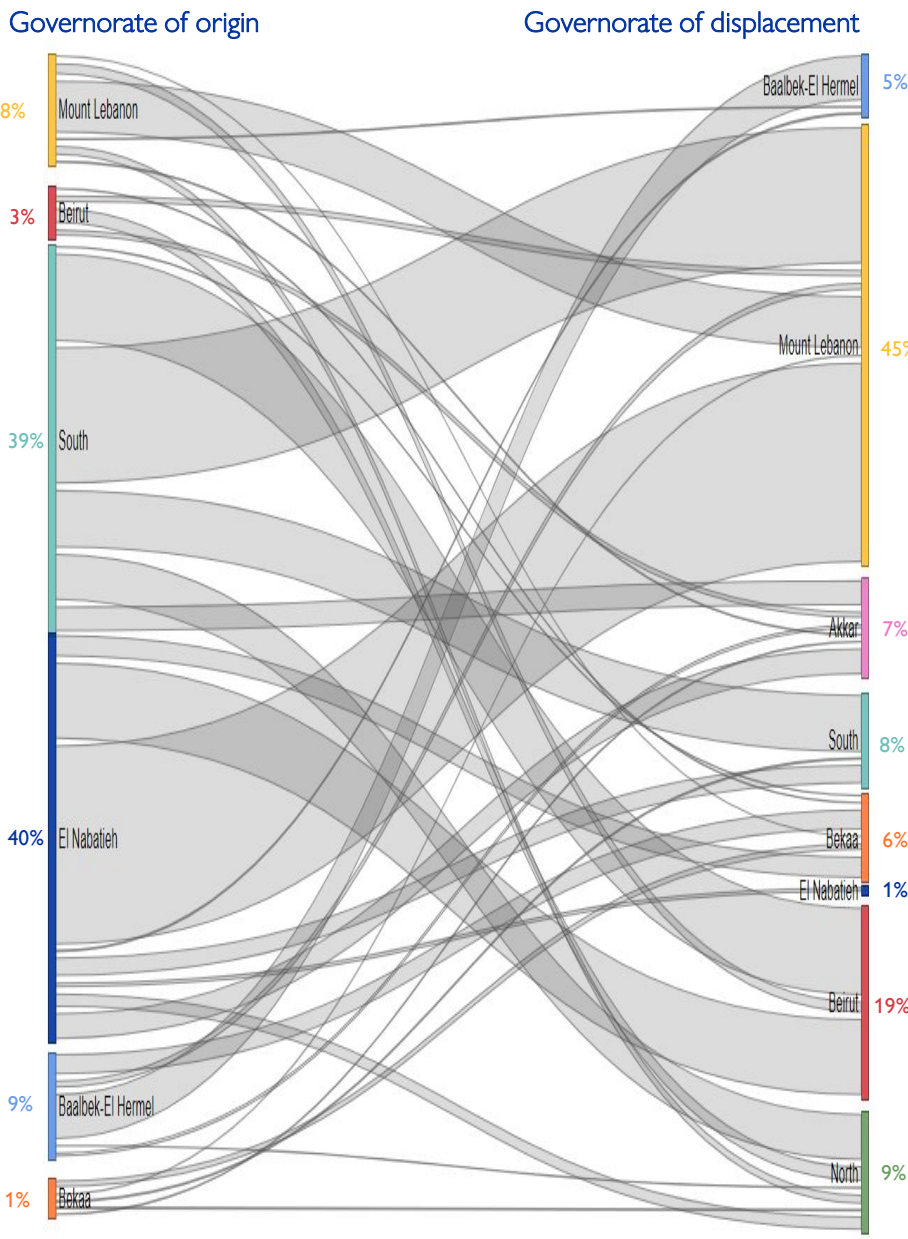
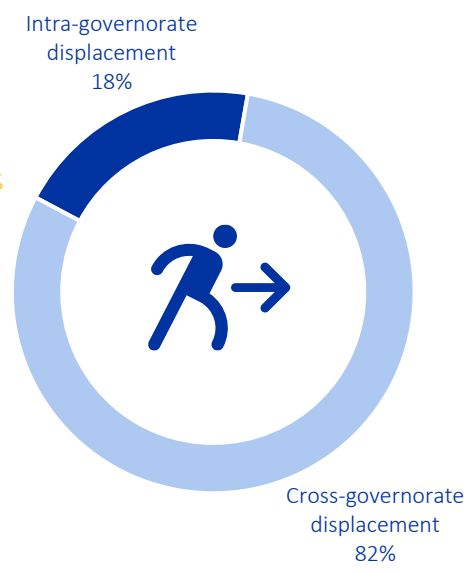
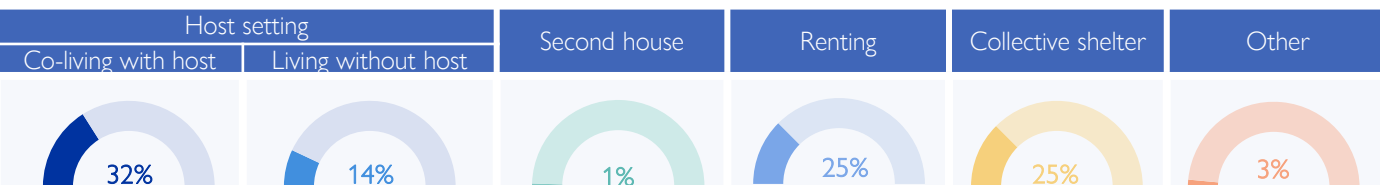


Chart 3: Displacement trends



Overall, 82% of the displacement has occurred outside the boundaries of the IDPs' governorate of origin. While 40% (296,999) of the IDPs originate from El Nabatieh, of this population 99% fled to locations outside the boundaries of the governorate. Similarly, in the South governorate, where 39% (291,537) of IDPs originated, 84% of these IDPs chose to move outside the boundaries of the governorate. However, in Mount Lebanon governorate, where 8% (62,266) of IDPs originated, 70% of these IDPs chose to move internally within the boundaries of the governorate.

IDPs distribution by shelter type – By Governorate



Around 46% of IDPs are currently living in host settings, around 25% are housed in 953 collective shelters, while 25% have opted for rental housing. Another 1% have relocated to their secondary residences. Meanwhile, 3% are categorized under “other”, this includes unfinished buildings, tents, parks, on the streets, or self-settled sites.

Of the 46% in host settings, 241,656 are co-living with non-internally displaced families, while 100,915 reside separately. Notably, 70% of the 342,571 individuals in host settings are living in overcrowded conditions according to the perception of IOM DTM key informants.

Governorate	Host setting		Second house	Renting	Collective shelter	Other
	Co-living with host	Living without host				
Bekaa	47%	2%	0%	16%	35%	0%
Baalbek-El Hermel	21%	20%	3%	17%	33%	6%
Beirut	43%	4%	1%	2%	38%	12%
El Nabatieh	25%	24%	0%	23%	28%	0%
Mount Lebanon	30%	11%	1%	37%	21%	0%
North	19%	25%	0%	35%	20%	1%
South	31%	24%	1%	22%	22%	0%
Akkar	35%	28%	1%	18%	13%	5%

Displacement demographics

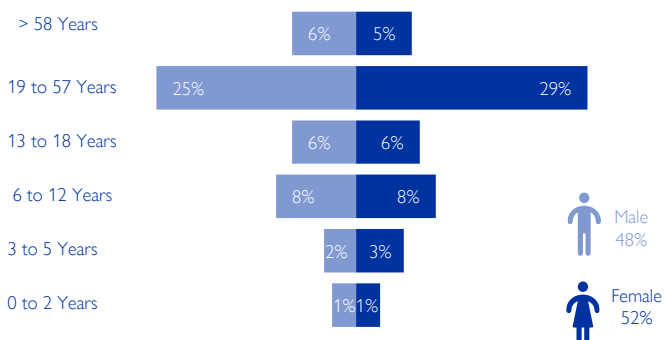


Chart 4: Displacement demographics – Based on Round 45

35% of IDPs are children (< 18 years), while 34% are female adults and 31% are male adults.

Note: These figures represent sample data of 2 households per location provided by key informants and do not reflect the entire IDP population in each area.

Methodology

The objective of the Mobility Snapshot is to support the humanitarian community in preparedness and response planning. Multi-layered data is routinely captured through Rounds using a suite of methodological tools designed to track and monitor displacement. These tools are in line with the [DTM Global Methodological Framework](#).

Data is collected nationwide through a combination of face-to-face and remote data collection methods, utilizing a network of over 50 enumerators and 1,500 key informants. These key informants consist of government officials, mukhtars, community representatives, and neighborhood focal points.

The following citation is required when using any data and information included in this information product: "International Organization for Migration (IOM), September 2024. DTM Mobility Snapshot, Round 53 IOM, Lebanon". For more information on terms and conditions of DTM reports and information products, please refer to <https://dtm.iom.int/terms-and-conditions>.