

DISPLACEMENT TRACKING MATRIX — NIGERIA EMERGENCY TRACKING TOOL (ETT)

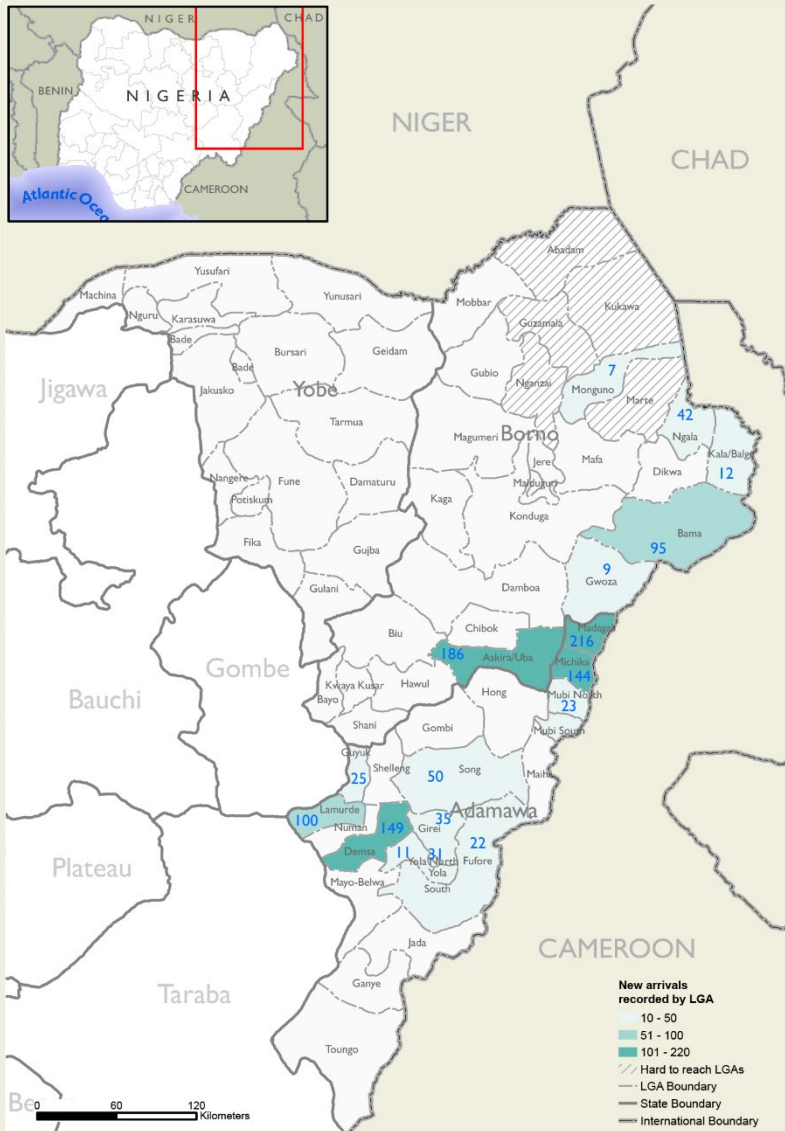
SUMMARY OF MOVEMENTS IN BORNO AND ADAMAWA STATES, 30 September – 6 October 2024

DASHBOARD: 400

DATA COLLECTION: Week 40, 2024

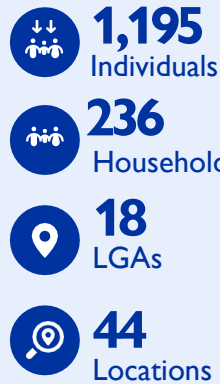
DATE OF PUBLICATION: 11 October 2024

OVERVIEW OF DISPLACEMENTS

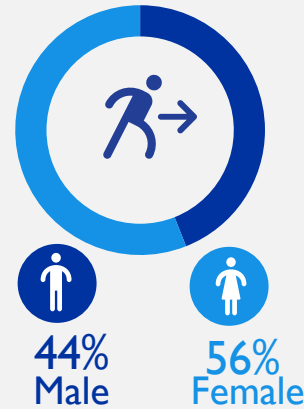


This map is for illustration purposes only. Names and boundaries on this map do not imply official endorsement or acceptance by IOM.

KEY FIGURES



GENDER BREAKDOWN



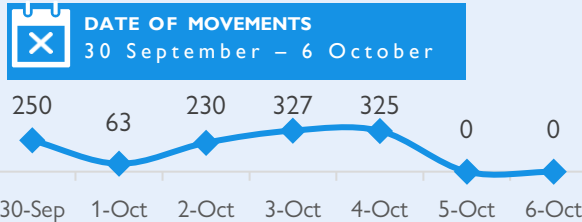
METHODOLOGY

The DTM Emergency Tracking Tool (ETT) is deployed to track and collect information on large and sudden population movements, provide frequent updates on the scale of displacement and quantify the affected population when needed. As a sub-component of the mobility tracking methodology in Nigeria, ETT utilizes direct observations and a broad network of key informants to capture the best estimates of the affected population per location, enabling targeted humanitarian response planning.

LIMITATIONS

The ETT figures reported are not cumulative of all the affected persons thus far but rather provide a snapshot of the current displacement situation on the date indicated. The data and information reported on this dashboard are related solely to the movements caused by the triggers on page two between 30 September – 6 October 2024.

DISPLACEMENT EVOLUTION



TOP REPORTED NEEDS*



TOP AREAS OF ORIGIN



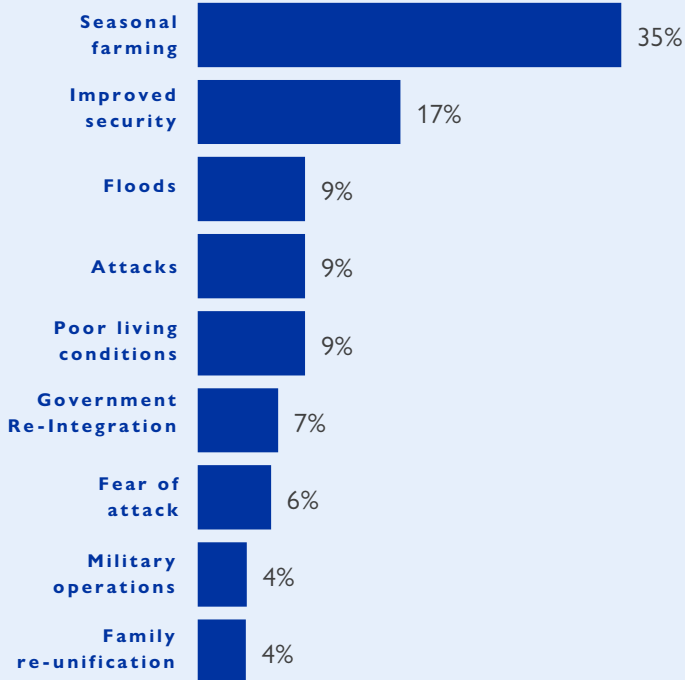
*Multiple-choice response

ALERT SUMMARY

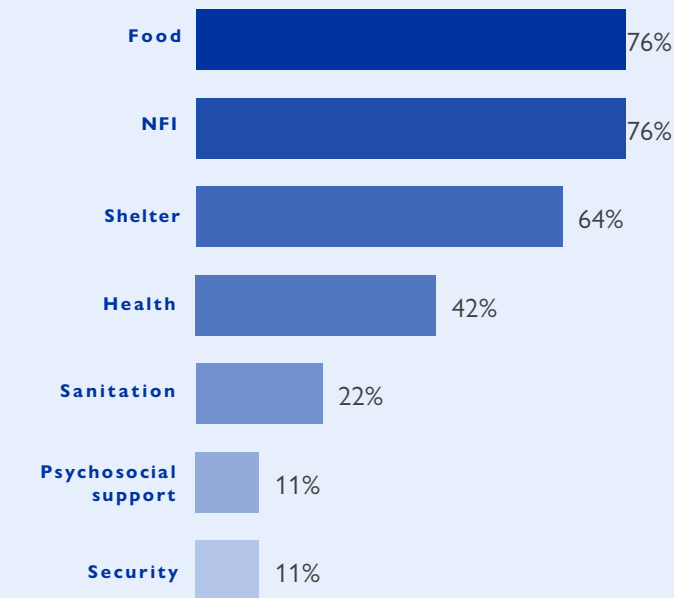
Between 30 September and 6 October 2024, a total of 1,195 new arrivals were recorded at locations in Adamawa and Borno states. The new arrivals were recorded at locations in Askira/Uba, Bama, Gwoza, Kala Balge, Monguno and Ngala local government areas (LGAs) of the most conflict-affected Borno State, in Demsa, Fufore, Girei, Guyuk, Lamurde, Madagali, Michika, Mubi North, Mubi South, Song, Yola North and Yola South LGA of Adamawa State.

ETT assessments identified the following movement triggers: seasonal farming (422 individuals or 35%), improved security (202 individuals or 17%), flood (107 individuals or 9%), attack (107 individuals or 9%), poor living conditions (107 individuals or 9%), government re-integration (80 individuals or 7%), fear of attack (73 individuals or 6%), military operations (49 individuals or 4%) and family re-unification (48 individual or 4%).

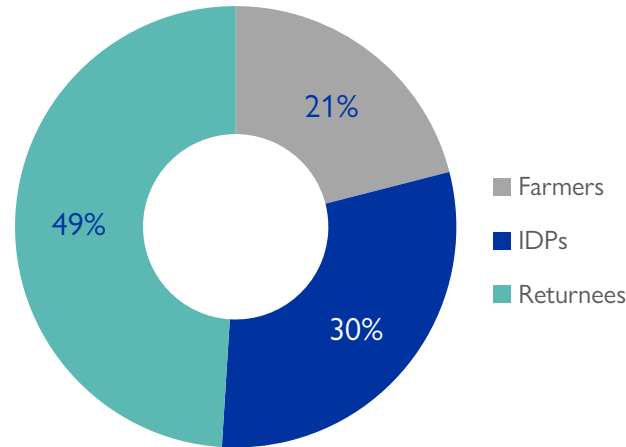
PERCENTAGE OF INDIVIDUALS BY MOVEMENT TRIGGER



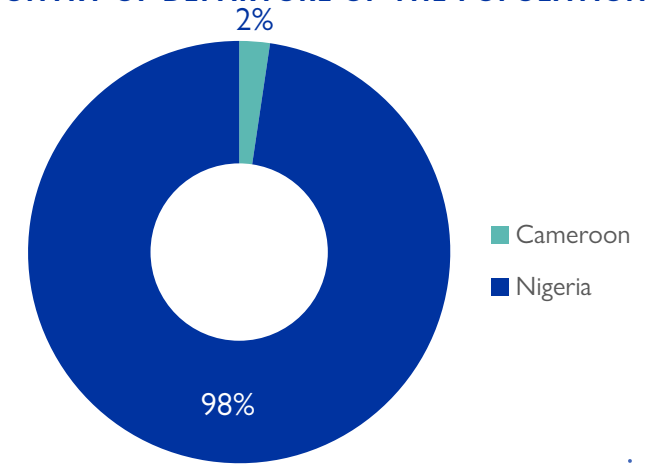
NEEDS EVOLUTION*



ARRIVING POPULATION



COUNTRY OF DEPARTURE OF THE POPULATION



NEW ARRIVALS SCREENING BY NUTRITION PARTNERS



124 MUAC

Children (6 – 59 months)
Screened for malnutrition.
Category of screened children.

Green: 109

Yellow: 10

Red: 5



MALNUTRITION SCREENING SUMMARY OF THE NEW ARRIVALS (CHILDREN 6 – 59 MONTHS)

Between 30 September and 06 October 2024, an exhaustive nutrition screening using Mid-Upper Arm Circumference (MUAC) and oedema for acute malnutrition was conducted by sector partners for 124 children aged 6-59 months. Of the 124 children screened, the MUAC reading indicated that five were recorded in the red category, 10 in the yellow category and 109 in the green category. No case of oedema was reported in the seven LGAs assessed.

Among the 124 children screened, 68 arrived from neighbouring countries (60 in Mobbar LGA, 2 in Bama LGA and 6 in Kala Balge LGA); of all the 68 children measured; 62 were in green, four were in yellow and two were in red category. All children found with acute malnutrition have been admitted to the treatment programme.

LGA	MUAC Categories						Total
	Green (≥12.5cm)		Yellow (11.5cm – 12.5cm)		Red (<11.5cm)		
	Inaccessible	Accessible	Inaccessible	Accessible	Inaccessible	Accessible	
Bama	30	0	0	0	0	0	30
Dikwa	7	0	4	0	1	0	12
Gwoza	0	1	1	0	1	0	3
Kala Balge	0	6	0	0	0	0	6
Mobbar	0	54	0	4	0	2	60
Monguno	4	0	0	0	0	0	4
Ngala	0	7	0	1	0	1	9
Total	41	68	5	5	2	3	124

Please note, the data presented above are not surveillance results and should be interpreted with caution.

■ Nourished
 ■ Moderate Acute Malnutrition (MAM)
 ■ Severe Acute Malnutrition (SAM)

*Multiple-choice response

DISPLACEMENT BREAKDOWN – all movements.

State	Arrival location		Movement location			Number of individuals		
	LGA	Ward	State	LGA	Ward			
Adamawa	Demsa	Dong	Adamawa	Lamurde	Lafiya	149		
	Fufore	Beti	Adamawa	Yola South	Adarawo	13		
		Gurin			Girei I	9		
	Girei	Modire/Vinikilang	Adamawa	Girei	Modire/Vinikilang	12		
	Guyuk	Dumna	Gombe	Madagali	Shelmi/Sukur/Vapura	23		
	Lamurde	Lafiya	Gombe	Gombe	Dawaki	25		
			Borno	Billiri	Tudu Kwaya	35		
	Madagali	K/Wuro Ngayandi	Borno	Kaltungo	Ture	30		
			Borno	Biu	Dadin Kowa	35		
			Borno	Jere	Old Maiduguri	39		
			Adamawa	Askira/Uba	Lassa	22		
			Adamawa	Madagali	Mubi South	Gella	42	
	Michika	Wagga	Borno	Gwoza	Gwoza Wakane/Bulabulin	24		
			Adamawa	Jere	Dusuman	30		
			Adamawa	Shelleng	Gwapopolok	41		
			Borno	Gwoza	Ngoshe	18		
			Mubi North	Garta/Ghunchi	Adamawa	Yola South	Namtari	31
						Maiha	Maiha Gari	35
	Mubi North	Betso				30		
	Hong	Hildi				28		
Mubi South	Sabon Layi	Cameroon	Ganye I	Ganye I	20			
		Adamawa	Marwa	Marwa	16			
Song	Song Gari	Adamawa	Mubi North	Sabon Layi	3			
		Borno	Bama	Shehuri/Hausari/Mairi	4			
Yola North	Karena	Adamawa	Madagali	Madagali	17			
		Borno	Gwoza	Hambagda/ Liman Kara/ New Settle	21			
Yola South	Mbamba	Adamawa	Fufore	Ribadu	50			
		Taraba	Yola North	Karena	12			
Borno	Askira / Uba	Askira East	Adamawa	Yola South	Rafin Kada	19		
			Adamawa	Hong	Mbamba	11		
			Adamawa	Mubi North	Garah	18		
			Adamawa	Yola South	Kwarhi	20		
		Borno	Chibok	Muchalla	9			
		Borno	Chibok	Ngurore	21			
		Borno	Chibok	Chibok Garu	16			
		Borno	Dille/Huyum	Uba	29			
	Askira / Uba	Uda/Uvu	Adamawa	Hong	Gaya	23		
			Adamawa	Uba	32			
	Bama	Buduwu/Bula Chirabe	Borno	Mubi North	Betso	11		
			Borno	Jere	Gomari	7		
	Gwoza	Gwoza Wakane/Bulabulin	Borno	Bama	Dipchari/Jere/Dar-Jamal/Ko	95		
			Borno	Gwoza	Guduf Nagadiyo	3		
			Borno	Gwoza	Hambagda/Liman Kara/New Settle	2		
	Kala Balge	Pulka/Bokko	Borno	Dure/Wala/Warabe	1			
Borno			Maiduguri M. C.	Maisandari	3			
Monguno	Monguno	Cameroon	Kusuri	Lugun	4			
		Cameroon	Makari	Bulonguwa	8			
Ngala	Ngala Ward	Borno	Kukawa	Kukawa	7			
		Kebbi	Bagudo	Bagudo/Tuga	42			