

DISPLACEMENT TRACKING MATRIX — NIGERIA EMERGENCY TRACKING TOOL (ETT)

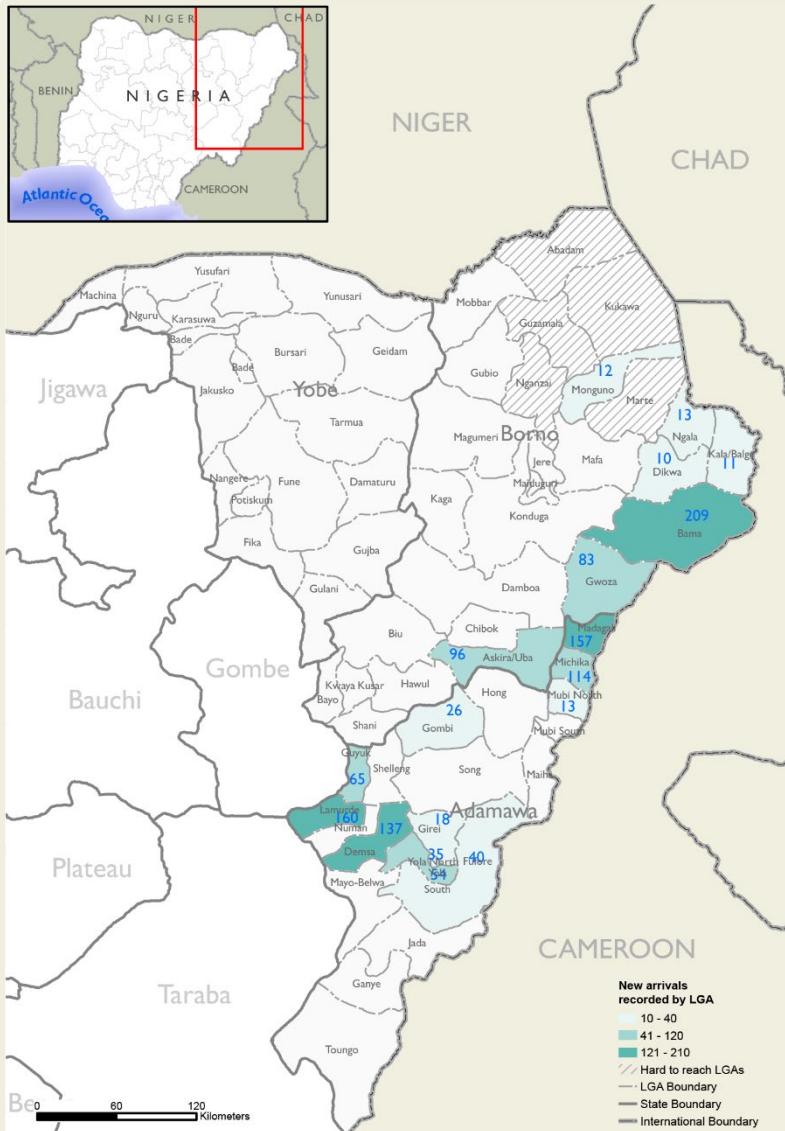
SUMMARY OF MOVEMENTS IN BORNO AND ADAMAWA STATES, 23 – 29 September 2024

DASHBOARD: 399

DATA COLLECTION: Week 39, 2024

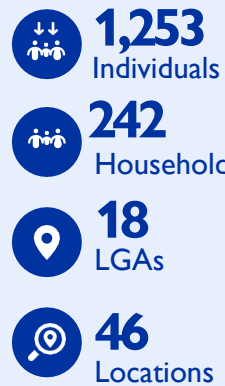
DATE OF PUBLICATION: 27 September 2024

OVERVIEW OF DISPLACEMENTS

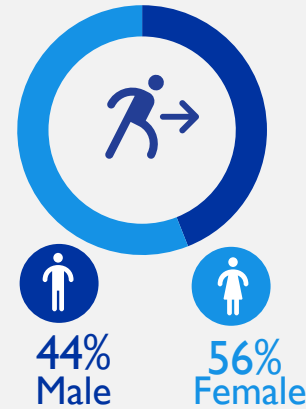


This map is for illustration purposes only. Names and boundaries on this map do not imply official endorsement or acceptance by IOM.

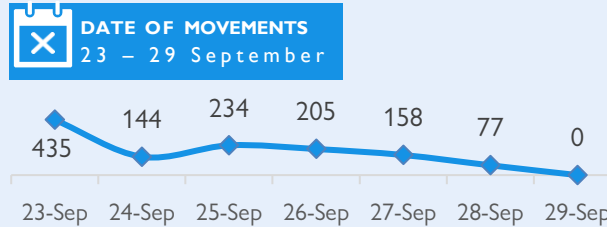
KEY FIGURES



GENDER BREAKDOWN



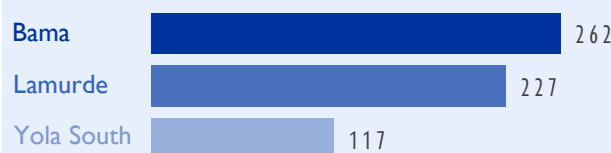
DISPLACEMENT EVOLUTION



TOP REPORTED NEEDS*



TOP AREAS OF ORIGIN



*Multiple-choice response

METHODOLOGY

The DTM Emergency Tracking Tool (ETT) is deployed to track and collect information on large and sudden population movements, provide frequent updates on the scale of displacement and quantify the affected population when needed. As a sub-component of the mobility tracking methodology in Nigeria, ETT utilizes direct observations and a broad network of key informants to capture the best estimates of the affected population per location, enabling targeted humanitarian response planning.

LIMITATIONS

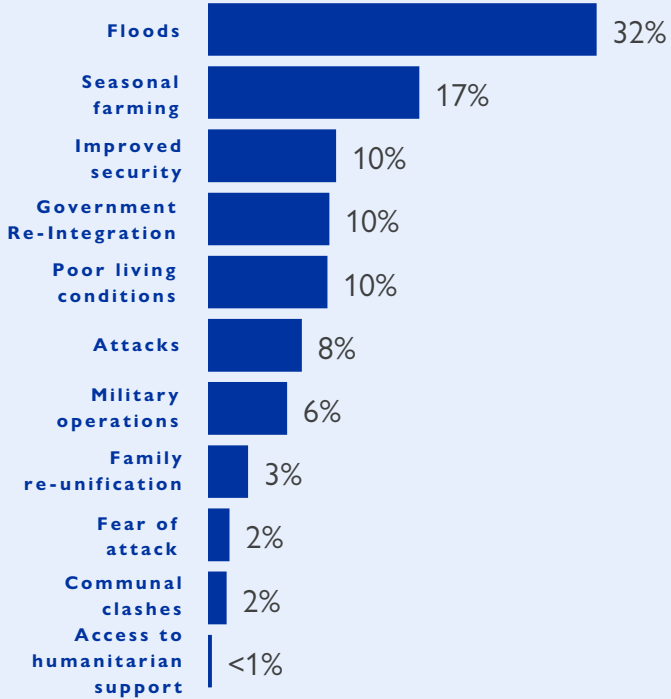
The ETT figures reported are not cumulative of all the affected persons thus far but rather provide a snapshot of the current displacement situation on the date indicated. The data and information reported on this dashboard are related solely to the movements caused by the triggers on page two between 23 – 29 September 2024.

ALERT SUMMARY

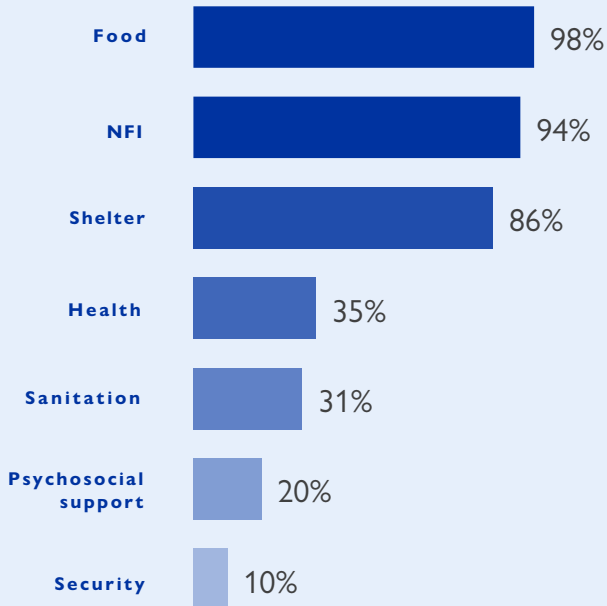
Between 23 and 29 September 2024, a total of 1,253 new arrivals were recorded at locations in Adamawa and Borno states. The new arrivals were recorded at locations in Askira/Uba, Bama, Dikwa, Gwoza, Kala Balge, Monguno and Ngala local government areas (LGAs) of the most conflict-affected Borno State, in Demsa, Fufere, Girei, Gombi, Guyuk, Lamurde, Madagali, Michika, Mubi North, Yola North and Yola South LGA of Adamawa State.

ETT assessments identified the following movement triggers: flood (397 individuals or 32%), seasonal farming (216 individuals or 17%), improved security (131 individuals or 10%), government re-integration (124 individuals or 10%), poor living conditions (122 individuals or 10%), attacks (96 individuals or 8%), military operation (81 individuals or 6%), family re-unification (41 individuals or 3%), fear of attack (22 individuals or 2%), communal clashes (19 individuals or 2%) and access to humanitarian support (4 individual or less than 1%).

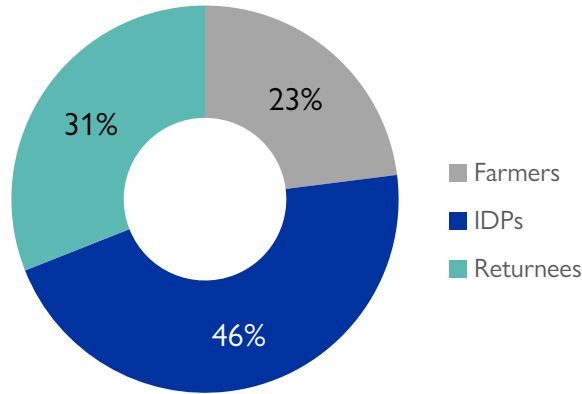
PERCENTAGE OF INDIVIDUALS BY MOVEMENT TRIGGER



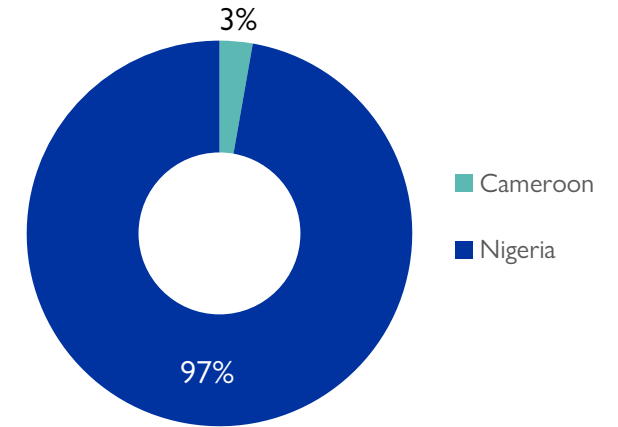
NEEDS EVOLUTION*



ARRIVING POPULATION



COUNTRY OF DEPARTURE OF THE POPULATION



NEW ARRIVALS SCREENING BY NUTRITION PARTNERS



116 MUAC

Children (6 – 59 months)
Screened for malnutrition.
Category of screened children.



MALNUTRITION SCREENING SUMMARY OF THE NEW ARRIVALS (CHILDREN 6 – 59 MONTHS)

Between 23 and 29 September 2024, an exhaustive nutrition screening using Mid-Upper Arm Circumference (MUAC) and oedema for acute malnutrition was conducted by sector partners for 116 children aged 6-59 months. Of the 116 children screened, the MUAC reading indicated that three were recorded in the red category, 12 in the yellow category and 101 in the green category. No case of oedema was reported in the six LGAs assessed.

Among the 116 children screened, 47 arrived from neighbouring countries (39 in Mobbar LGA, 2 in Bama LGA and 6 in Kala Balge LGA); of all the 47 children measured; 44 were in green, three were in yellow and none in red category. All children found with acute malnutrition have been admitted to the treatment programme.

LGA	MUAC Categories						Total
	Green ($\geq 12.5\text{cm}$)		Yellow ($11.5\text{cm} - 12.5\text{cm}$)		Red ($< 11.5\text{cm}$)		
	Inaccessible	Accessible	Inaccessible	Accessible	Inaccessible	Accessible	
Bama	45	3	7	1	3	0	59
Kala Balge	0	6	0	0	0	0	6
Mobbar	0	37	0	2	0	0	39
Monguno	6	0	0	0	0	0	6
Michika	0	0	0	2	0	0	2
Ngala	4	0	0	0	0	0	4
Total	55	46	7	5	3	0	116

Please note, the data presented above are not surveillance results and should be interpreted with caution.



*Multiple-choice response

DISPLACEMENT BREAKDOWN – only the movements with 13 people and above are listed below.

Arrival location			Movement location			Number of individuals		
State	LG A	Ward	State	LG A	Ward			
Adamawa	Fufore	Beti	Adamawa	Yola South	Adarawo	21		
	Gombi	Garkida	Borno	Hawul	Kwajaffa/Hang	26		
	Guyuk	Banjiram	Chikila	Adamawa	Guyuk	Dumna	20	
			Guyuk			Bodeno	25	
			Banjiram			Chikila	20	
	Lamurde	Lamurde	Lafiya	Adamawa	Lamurde	Gyawana	35	
			Lamurde			Gyawana	70	
			Waduku			Lafiya	25	
	Madagali	Pallam	Suwa	Borno	Askira/Uba	Uba	30	
			Wula	Borno	Askira/Uba	Dambo	Dambo	42
						Mussa	22	
						Konduga	40	
	Michika	Garta/Ghunchi	Babel	Cameroon	Mokolo	Kwasahai	19	
			Sukumu/Tillijo	Gombe	Dukku	Zange	34	
			Madzi	Adamawa	Song	Song Gari	27	
			Jigalambu	Borno	Askira/Uba	Husara/Tampul	35	
	Mubi North	Lokuwa	Taraba	Gassol	Gassol	13		
	Yola North	Jambutu	Adamawa	Numan	Imburu	16		
	Yola South	Bole Yolde Pate	Adamawa	Adamawa	Yola South	Bole Yolde Pate	15	
					Madagali	K/Wuro Ngayandi	18	
Girei	Jera Bonyo	Adamawa	Ganye	Bakari Guso	18			
Dema	Borrong	Adamawa	Adamawa	Lamurde	Gyawana	85		
				Dilli	Yola South	Namtari	52	
Borno	Askira/Uba	Askira East	Adamawa	Mubi North	Lokuwa	17		
				Yola South	Namtari	18		
				Yola North	Doubeli	21		
	Bama	Shehuri/Hausari/Mairi	Borno	Bama	Jambutu	13		
					Lawanti/Malam/Mastari/Abba	36		
					Yabiri Kura/Yabiri Gana/Chongolo	48		
					Dipchari/Jere/Dar-Jamal/Ko	59		
	Gwoza	Pulka/Bokko	Borno	Borno	Andara/Ajiri/Wulba	33		
Maiduguri M. C.					Gwange I	13		
				Jere	Mashamari	15		