

EMERGENCY TRACKING TOOL (ETT)

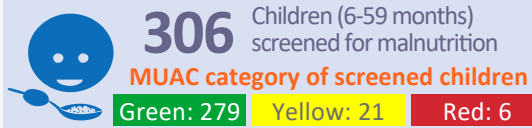
DTM Emergency Tracking Tool (ETT) is deployed to track and provide up-to-date information on sudden displacement and other population movements

ETT Report: No. 104 | 28 January - 03 February 2019

Movements



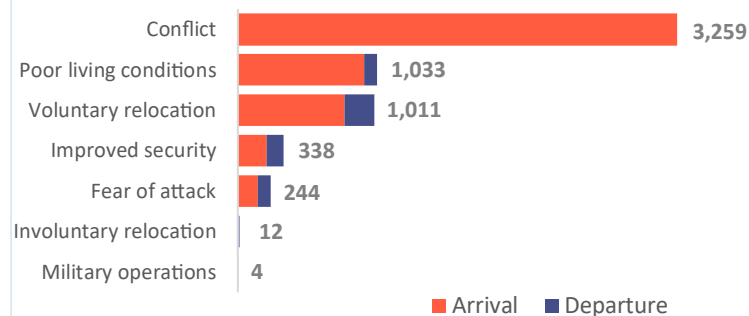
New Arrival Screening by Nutrition Partners



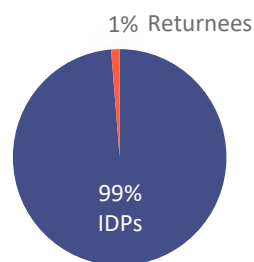
Within the period of 28 January to 03 February 2019, a total of 5,901 movements were recorded, including 5,357 arrivals and 544 departures. Arrivals were recorded at locations in Askira Uba, Bama, Biu, Chibok, Damboa, Dikwa, Gwoza, Jere, Kaga, Konduga, Magumeri, Maiduguri, Mobbar, Monguno and Ngala Local Government Areas (LGAs) of Borno state and locations in Demsa, Fufore, Girei, Gombi, Guyuk, Hong, Lamurde, Madagali, Maiha, Mayo Belwa, Michika, Mubi South, Numan, Song, Yola North and Yola South LGAs of Adamawa state. Departures were recorded at Askira Uba and Bama LGA of Borno state and Demsa, Fufore, Girei, Hong, Lamaurde, Madagali, Maiha, Mayo Belwa, Mubi North, Numan, Song, Yola North and Yola South LGA of Adamawa state.

ETT assessments identified the following movement triggers: voluntary relocation (17%), improved security (6%), ongoing conflict (55%), poor living conditions (18%), and fear of attacks (4%)

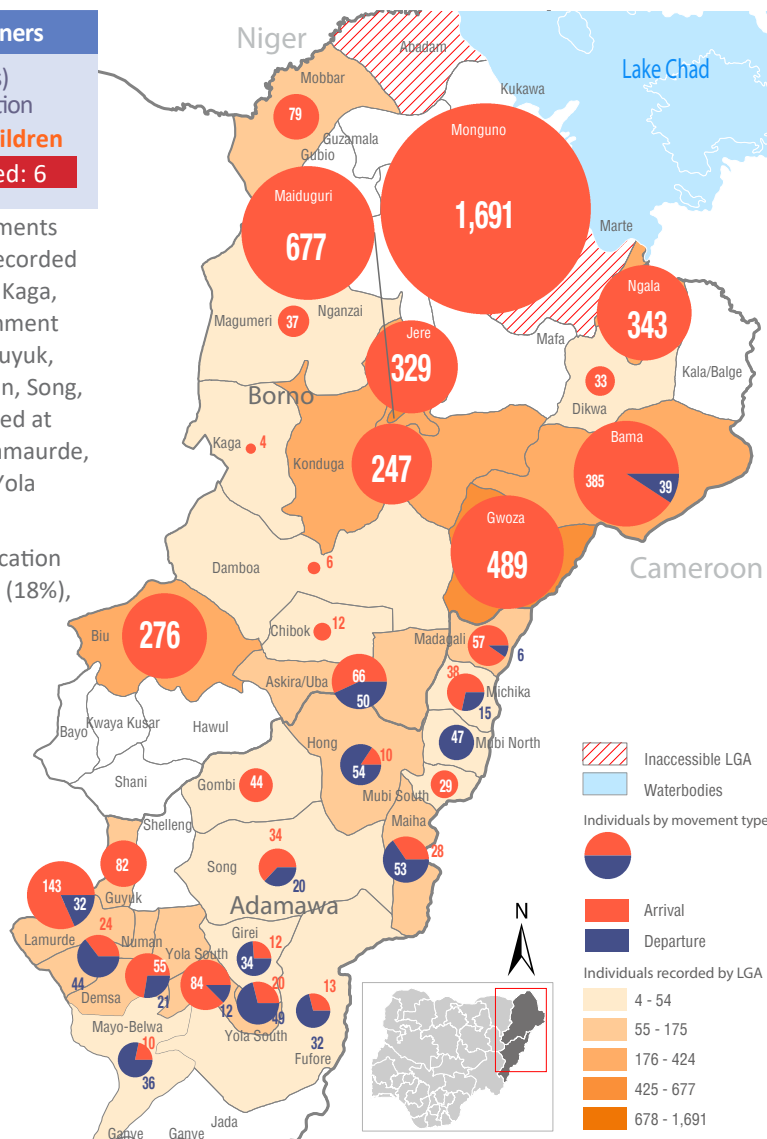
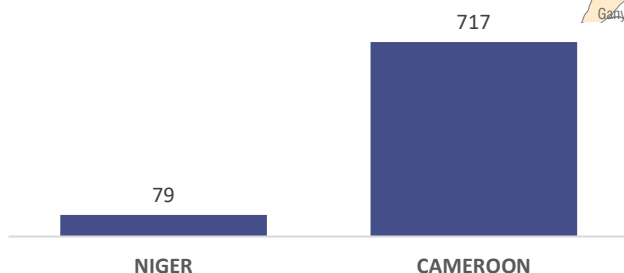
Number of individuals by movement triggers



Affected population



Arrivals from Neighbouring Countries



Summary of major movements

Monguno: 1,691 arrivals were recorded in Monguno LGA of Borno state. These include 1,642 arrivals from Falanti in Baga of Kukawa LGA. The new arrivals reported to have relocated due to the ongoing conflict.

Maiduguri: 677 arrivals were recorded in Maiduguri Metropolitan Council (MMC) of Borno state. These include 334 arrivals from Doro ward and 240 arrivals from Baga ward of Kukawa LGA, 22 arrivals from Arge ward of Abadam LGA, 62 arrivals from Sojiri ward and 19 arrivals from Maiborti ward of Konduga LGA of Borno State. 88% of the new arrivals reported to have relocated due to the ongoing conflict while 12% relocated due to fear of being attacked.

Gwoza: 489 arrivals were recorded in Gwoza LGA of Borno state. These include 371 arrivals from Marwa in Cameroon, 78 arrivals from Shehuri ward of Bama LGA, 14 arrivals from Hambagda and Mbita wards of Gwoza LGA and 3 arrivals from Lamisla ward of MMC in Borno state, 15 arrivals from Damare ward of Girei LGA, 5 arrivals from Hoima ward of Song LGA and 2 arrivals from Uba ward for Hong LGA in Adamawa state. 80% of the new arrivals reported to have relocated due to poor living conditions, 2% due to the ongoing conflict, 1% due to military operations while 17% voluntarily relocated.

Ngala: 343 arrivals were recorded in Ngala LGA of Borno state. These include 251 arrivals from Rann ward of Kala Balge LGA Borno state and 92 arrivals from Marwa in Cameroon. 38% of the new arrivals reported to have relocated due to poor living conditions, 12% due to the ongoing conflict, and 17% voluntarily relocated.

New Arrival Malnutrition Screening Summary (children 6-59 months)

An exhaustive nutrition screening using mid-upper arm circumference (MUAC) and Oedema for acute malnutrition was conducted by Sector partners for 306 children of 6-59 months. Of the 306 children screened, the MUAC reading was: 6 children (1 from inaccessible and 5 from accessible area) were in the Red category, 21 were in the Yellow category and 279 were measured in the Green category. No case of Oedema was reported in the 5 LGAs that sent in reports.

The results also include 108 children from a neighbouring countries (77 moved to Bama, 17 to Mobbar and 14 to Ngala): of all the 108 children measured, 5 were in red category, 91 in the green category and 12 were in the yellow category. All children found with severe acute malnutrition have been admitted for treatment. Please note, the data presented are not surveillance results and should be interpreted with caution.

LGA	MUAC Categories						Total
	Green (≥12.5cm)		Yellow (11.5 cm - 12.5cm)		Red (<11.5cm)		
	In-Accessible	Accessible	In-Accessible	Accessible	In-Accessible	Accessible	
Bama	8	87	0	6	1	4	106
Gwoza	0	107	0	4	0	0	111
Mobbar	0	11	0	6	0	0	17
Ngala	0	61	0	5	0	1	67
Konduga	0	5	0	0	0	0	5
Total	8	271	0	21	1	5	306

■ Nourished

■ Moderate Acute Malnutrition (MAM)

■ Severe Acute Malnutrition (SAM)

Table 1. Details of movements by locations of assessment and locations of arrival/departure - only movements with at least 20 persons are listed below

Tracking location			Movement location				
STATE	LGA	WARD	STATE	LGA	WARD	ARRIVAL	DEPARTURE
ADAMAWA	DEMSA	BILLE	ADAMAWA	MAYO BELWA	MAYO FARANG	25	-
	FUFORE	BETI	ADAMAWA	YOLA SOUTH	ADARAWO	-	25
	GIREI	GIREI 1	ADAMAWA	MADAGALI	HYAMBULLA	-	22
	LAMURDE	GYAWANA	ADAMAWA	NUMAN	BOLKI	20	-
		LAFIYA	GOMBE	LAMURDE	OPALO	21	-
	MADAGALI	HYAMBULA	ADAMAWA	BALANGA	CHAM MWONA	23	-
	MAIHA	SORAU A	ADAMAWA	GIREI	CHAM MWONA	22	-
		SORAU B	GOMBE	BALANGA	CHAM MWONA	-	23
	MAYO BELWA	MAYO FARANG	ADAMAWA	MAYO BELWA	MAYO BELWA	-	31
	MUBI SOUTH	MUGULU	ADAMAWA	MAIHA	SARAU B	29	-
NUMAN	BOLKI	ADAMAWA	LAMURDE	GYAWANA	-	20	
YOLA SOUTH	NAMTARI	BORNO	KALA BALGE	MESHARDE	76	-	
BORNO	ASKIRA/UBA	DILLE	TARABA	IBI	KASHIMBLA	-	50
		NGOHI	BORNO	BIU	DUGJA	22	-
	BAMA	BUDUWA	BORNO	BAMA	WALASA	75	-
			CAMEROON	MARWA	KOLOFATA	206	-
		SHEHURI	BORNO	GWOZA	PULKA	15	39
	CAMEROON	MARWA	MOKOLO	48	-		
		BIU	MIRNGA	YOBE	GUJUBA	BUNI	276
	DIKWA	DIKWA CENTRAL	LAGOS	SULULERE	YABA	21	-
		PULKA/BOKKO	BORNO	BAMA	SHEHURI	78	-
			CAMEROON	MARWA	MORA	371	-
	JERE	OLD MAIDUGURI	BORNO	KALA BALGE	RANN	65	-
				KUKAWA	BAGA	264	-
		DALORI	BORNO	BAGA	230	-	
	MAIDUGURI	BOLORI 1	BORNO	KUKAWA	BAGA	240	-
		MAFONI		DORO	334	-	
		MAISANDARI		ABADAM	ARGE	22	-
	MOBBAR	DAMASAK CENTRAL	NIGER	KONDUGA	SOJIRI	62	-
MONGUNO	MONGUNO	BORNO	DIFFA	SHETTIMARI	79	-	
NGALA	NGALA	BORNO	KUKAWA	BAGA	1,691	-	
		BORNO	KALA BALGE	RAB	129	-	
		CAMEROON	MARWA	BULONGA	RANN	122	-
					92	-	

The depiction and use of boundaries, geographic names, and related data shown on maps and included in this report are not warranted to be error free nor do they imply judgment on the legal status of any territory, or any endorsement or acceptance of such boundaries by IOM.

For more information or to report an alert, please contact:

Henry Kwenin, DTM Project Coordinator: hkwenin@iom.int | +234 9038852524 Bercasio Dave, Emergency Coordinator: dbercasio@iom.int | +234 9075070001 DTM information products: <http://nigeria.iom.int/dtm>

