

 **1,032** Individuals Affected
  **04** Affected Locations
  **0** Damaged Shelters
  **29** Casualties
  **Movement Trigger:**

Event Overview

On 23 and 24 July 2024, armed bandits attacked the community of Tinenune in Borikyo ward and farmer-herders clash occurred in the community of Dyom in Mbatian ward of Ukum Local Government Area (LGA) in Benue State. There were reports of two fatalities. The attacks affected 69 individuals in 25 households and the clash affected 137 individuals in 43 households. The affected individuals included 49 children, 110 women and 47 men.

On 24 and 25 July 2024, armed bandits attacked the communities of Magami Village in Gabake ward and Gidan Sarkin Muslumai in Sakajiki ward of Kaura Namoda LGA in Zamfara State. There were reports of 10 injuries and 17 fatalities. The attacks affected 826 individuals in 154 households and displaced them to the community Gidan Zurmi House, Mother Cat in S/Baura/S/Mafara ward in Kaura Namoda, the affected individuals included 462 children, 201 women and 163 men.

Of all the needs identified, security and health were the most prevalent. Other needs included food, psychosocial support, non-food items (NFI), shelter and transport.

Following these events, DTM (Displacement Tracking Matrix) field staff conducted rapid assessments to inform the humanitarian community and Government/partners, and to enable a targeted response.

Nigeria's north-central and north-west zones are afflicted with a multi-dimensional crisis. Long-standing tensions between ethnic and religious groups often result in attacks and banditry or hirabah. These attacks involve kidnapping and grand larceny along major highways by criminal groups. During the past years, the crisis accelerated and has resulted in widespread displacement across the north-central and north-west regions.



Map 1. Showing locations affected.

This map is for illustration purposes only. The boundaries and names shown, and the designations used on this map do not imply official endorsement or acceptance by the International Organization for Migration.

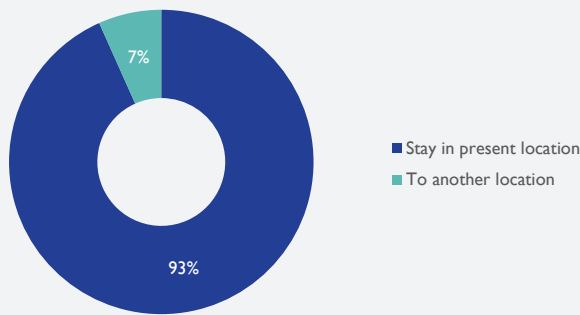


Fig. 1. Future intentions

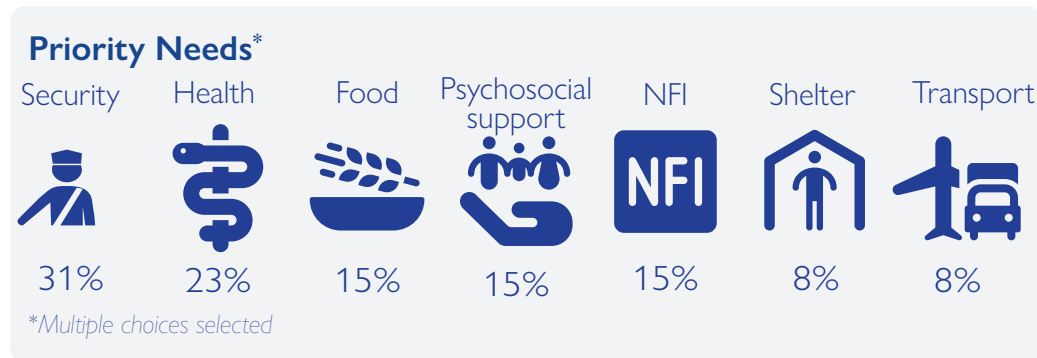


Fig. 2. Most needed assistance

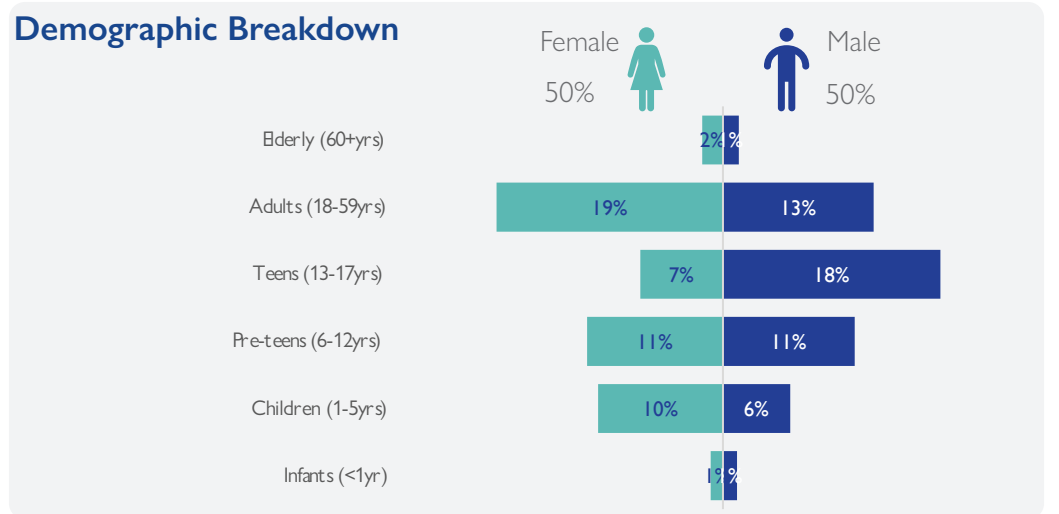


Fig. 3. Gender breakdown of affected population

| State | LGA | Ward | Number of Affected Household | Number of Affected Individuals | | | Casualty | Number of Partially Damaged Shelters | Number of fully Damaged Shelters |
|--------------|--------------|----------|------------------------------|--------------------------------|------------|--------------|-----------|--------------------------------------|----------------------------------|
| | | | | Male | Female | Total | | | |
| Benue | Ukum | Borikyo | 25 | 15 | 54 | 69 | 0 | 0 | |
| | | Mbatian | 43 | 51 | 86 | 137 | 2 | 0 | |
| Zamfara | Kaura Namoda | Gabake | 51 | 125 | 155 | 280 | 4 | 0 | |
| | | Sakajiki | 103 | 245 | 301 | 546 | 23 | 0 | |
| Total | | | 222 | 436 | 596 | 1,032 | 29 | 0 | |

Methodology: Crises and emergencies require the humanitarian community to act urgently. As a subcomponent of DTM's mobility tracking, flash reports utilise direct observation and a broad network of key informants to monitor sudden displacement resulting from events like natural disasters or attacks and collect information on the number, profile, and immediate needs of affected populations. In the initial 24 - 48 hours after an incident, DTM Nigeria activates a rapid assessment to document the event, urgent needs of affected individuals, demographic information, and impact. If displacement occurs, DTM Nigeria issues an Early Warning Flash/Incident report within 72 hours, notifying partners and stakeholders.

Disclaimer: The opinions expressed in the report are those of the authors and do not necessarily reflect the views of the International Organization for Migration (IOM). The designations employed and the presentation of material throughout the report do not imply the expression of any opinion whatsoever on the part of IOM concerning the legal status of any country, territory, city or area, or its authorities, or concerning its frontiers or boundaries.

When quoting, paraphrasing, or in any other way using the information mentioned in this report, the source needs to be stated appropriately as follows: "Source: Displacement Tracking Matrix (DTM) of the International Organization for Migration (IOM), July 2024."

