

DISPLACEMENT TRACKING MATRIX — NIGERIA EMERGENCY TRACKING TOOL (ETT)

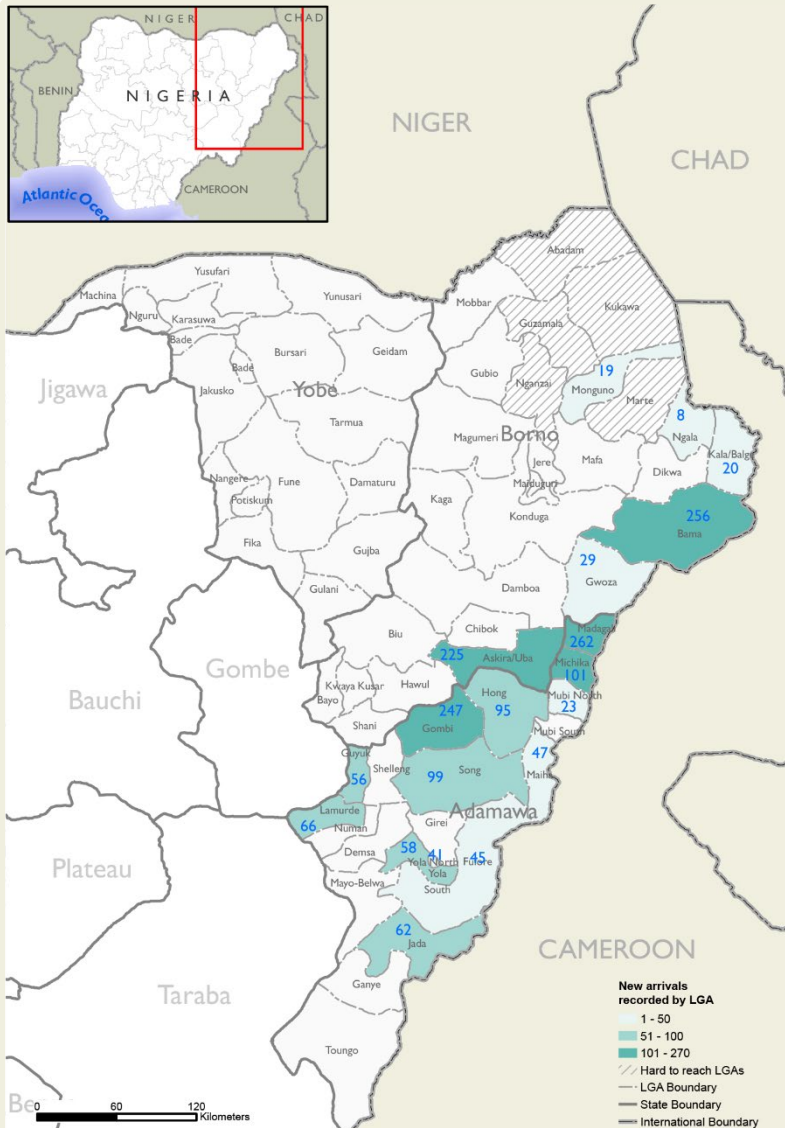
SUMMARY OF MOVEMENTS IN BORNO AND ADAMAWA STATES, 26 August – 01 September 2024

DASHBOARD: 395

DATA COLLECTION: Week 34, 2024

DATE OF PUBLICATION: 06 September 2024

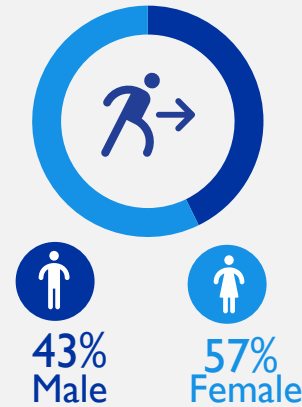
OVERVIEW OF DISPLACEMENTS



KEY FIGURES



GENDER BREAKDOWN



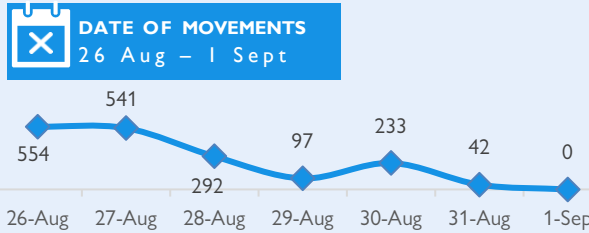
METHODOLOGY

The DTM Emergency Tracking Tool (ETT) is deployed to track and collect information on large and sudden population movements, provide frequent updates on the scale of displacement and quantify the affected population when needed. As a sub-component of the mobility tracking methodology in Nigeria, ETT utilizes direct observations and a broad network of key informants to capture the best estimates of the affected population per location, enabling targeted humanitarian response planning.

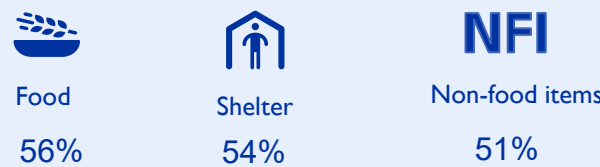
LIMITATIONS

The ETT figures reported are not cumulative of all the affected persons thus far but rather provide a snapshot of the current displacement situation on the date indicated. The data and information reported on this dashboard are related solely to the movements caused by the triggers on page two between 26 August – 01 September 2024.

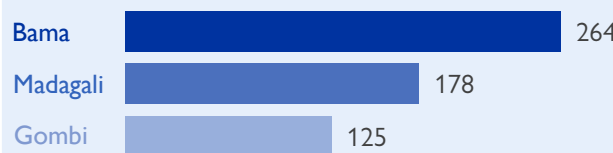
DISPLACEMENT EVOLUTION



TOP REPORTED NEEDS*



TOP AREAS OF ORIGIN



ALERT SUMMARY

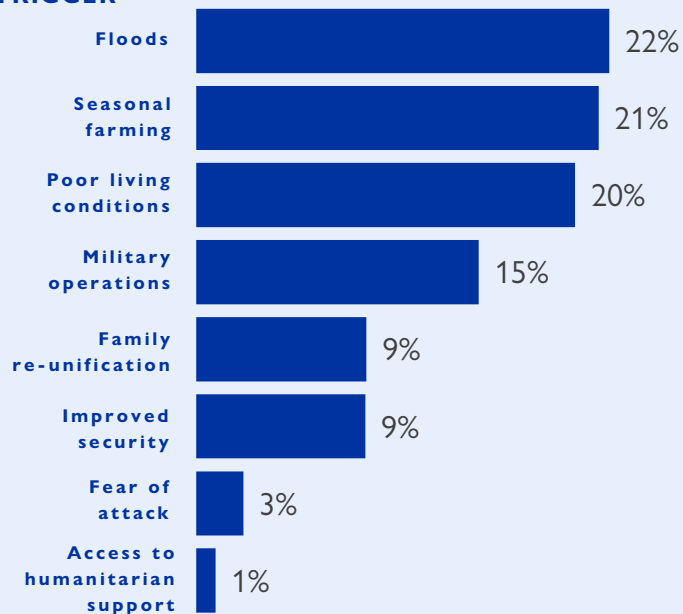
Between 26 August and 01 September 2024, a total of 1,759 new arrivals were recorded at locations in Adamawa and Borno states. The new arrivals were recorded at locations in Askira/Uba, Bama, Gwoza, Kala Balge, Monguno and Ngala local government areas (LGAs) of the most conflict-affected Borno State, and in Fufere, Gombi, Guyuk, Hong, Jada, Lamurde, Madagali, Maiha, Michika, Mubi North, Song, Yola North and Yola South LGAs of Adamawa State.

ETT assessments identified the following movement triggers: flood (386 individuals or 22%), seasonal farming (376 individuals or 21%), poor living conditions (354 individuals or 20%), military operations (264 individuals or 15%), family re-unification (159 individuals or 9%), improved security (158 individuals or 7%), fear of attack (44 individuals or 3%) and access to humanitarian support (18 individuals or 1%).

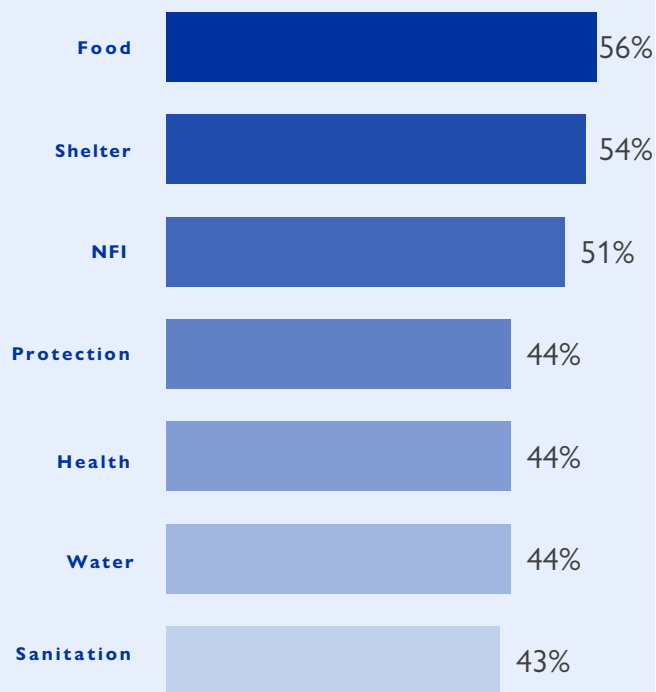
This map is for illustration purposes only. Names and boundaries on this map do not imply official endorsement or acceptance by IOM.

*Multiple-choice response

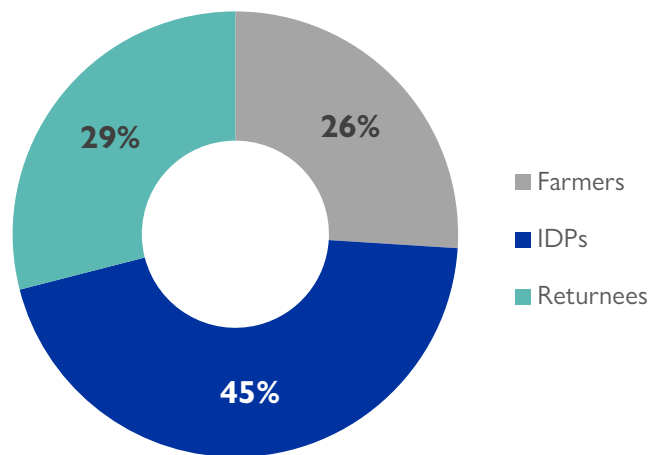
PERCENTAGE OF INDIVIDUALS BY MOVEMENT TRIGGER



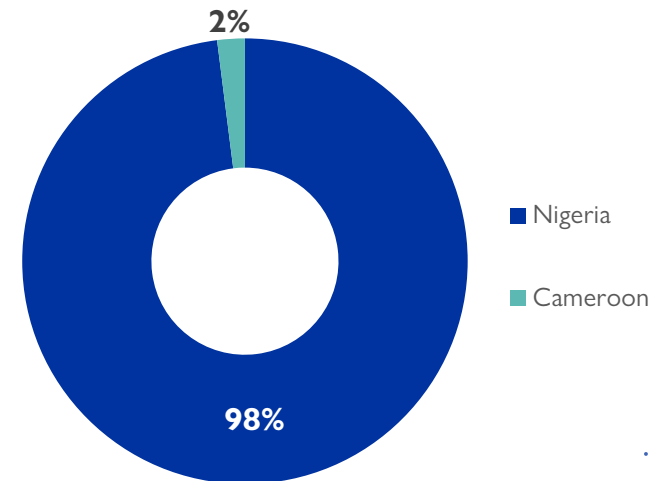
NEEDS EVOLUTION*



ARRIVING POPULATION



COUNTRY OF DEPARTURE OF THE POPULATION



NEW ARRIVALS SCREENING BY NUTRITION PARTNERS



155 MUAC

Green: 126

Yellow: 17

Red: 12

Children (6 – 59 months)
Screened for malnutrition.
Category of screened children.

MALNUTRITION SCREENING SUMMARY OF THE NEW ARRIVALS (CHILDREN 6 – 59 MONTHS)

Between 26 August and 01 September 2024, an exhaustive nutrition screening using Mid-Upper Arm Circumference (MUAC) and oedema for acute malnutrition was conducted by sector partners for 155 children aged 6-59 months. Of the 155 children screened, the MUAC reading indicated that 12 were recorded in the red category, 17 in the yellow category and 126 in the green category. No case of oedema was reported in the seven LGAs assessed.

Among the 155 children screened, 28 arrived from neighbouring countries (28 in Mobbar LGA); of all the 28 children measured; 26 were in green, two were in yellow and none in the red category. All children found with acute malnutrition have been admitted to the treatment programme.

LGA	MUAC Categories						Total
	Green ($\geq 12.5\text{cm}$)		Yellow (11.5cm – 12.5cm)		Red ($< 11.5\text{cm}$)		
	Inaccessible	Accessible	Inaccessible	Accessible	Inaccessible	Accessible	
Bama	76	0	11	0	8	0	95
Dikwa	3	0	2	0	1	0	6
Gwoza	6	0	1	0	3	0	10
Kala Balge	0	3	0	0	0	0	3
Mobbar	0	26	0	2	0	0	28
Monguno	10	0	0	0	0	0	10
Ngala	2	0	1	0	0	0	3
Total	97	29	15	2	12	0	155

Please note, the data presented above are not surveillance results and should be interpreted with caution.

■ Nourished

■ Moderate Acute Malnutrition (MAM)

■ Severe Acute Malnutrition (SAM)

*Multiple-choice response

DISPLACEMENT BREAKDOWN – only the movements with 19 persons and above are listed below.

State	Arrival location		Movement location			Number of individuals				
	LGA	Ward	State	LGA	Ward					
Adamawa	Fufore	Fufore	Adamawa	Maiha	Sorau 'A'	26				
		Ribadu		Yola South	Bole Yolde Pate	19				
		Gombi	Garkida	Adamawa	Girei	Dakri	23			
	Borno				Askira/Uba	Ngulde	42			
			Adamawa	Hawul	Shaffa	34				
	Hong			Garaha	21					
	Michika			Minkisi/ Wuro Ngiki	31					
	Song			Zumo	34					
	Guyuk		Guyuk	Adamawa	Girei	Damare	21			
					Song	Sigire	19			
	Hong	Bangshika	Adamawa	Madagali	K/Wuro Ngayandi	22				
						26				
	Jada	Lefiya	Adamawa	Lamurde	Waduku	43				
						52				
	Lamurde	Ngbakowo	Gombe	Kaltungo	Ture I	27				
						30				
	Madagali	Belel	Borno	Kwaya/Kusar	Kurba	36				
						Duhu/Shuwa	Adamawa	Hawul	Kwarhi	20
										52
		K/Wuro Ngayandi	Borno	Gwoza	Gwoza Wakane/Bulabulin	51				
							Adamawa	Mubi South	Lamorde	30
			Shelmi/Sukur/Vapura	Adamawa	Yola North	Jambutu				
							Maiha	Sorau 'A'	Adamawa	Madagali
	Michika	Michika I	Adamawa	Michika	Thukudou/Sufuku/Zah	19				
							Minkisi/ Wuro Ngiki	Gombi	Gombi North	31
	Song	Song Gari	Adamawa	Fufore	Fufore	26				
							Zumo	Gombi	Gombi South	34
	Askira/Uba	Husara/Tampul	Adamawa	Madagali	Duhu/Shuwa	36				
Borno							Chibok	Kautikari	43	
										Adamawa
Adamawa							Borno	Chibok	Mbalala	
										Adamawa
Bama	Buduwa/Bula Chirabe	Borno	Bama	Dipchari/Jere/Dar-Jamal/Kotembe	202					