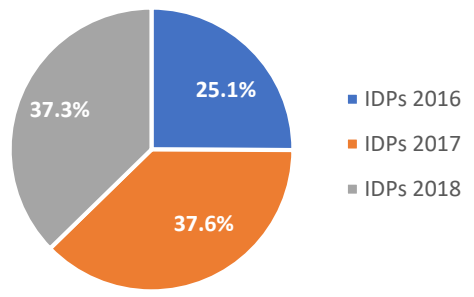
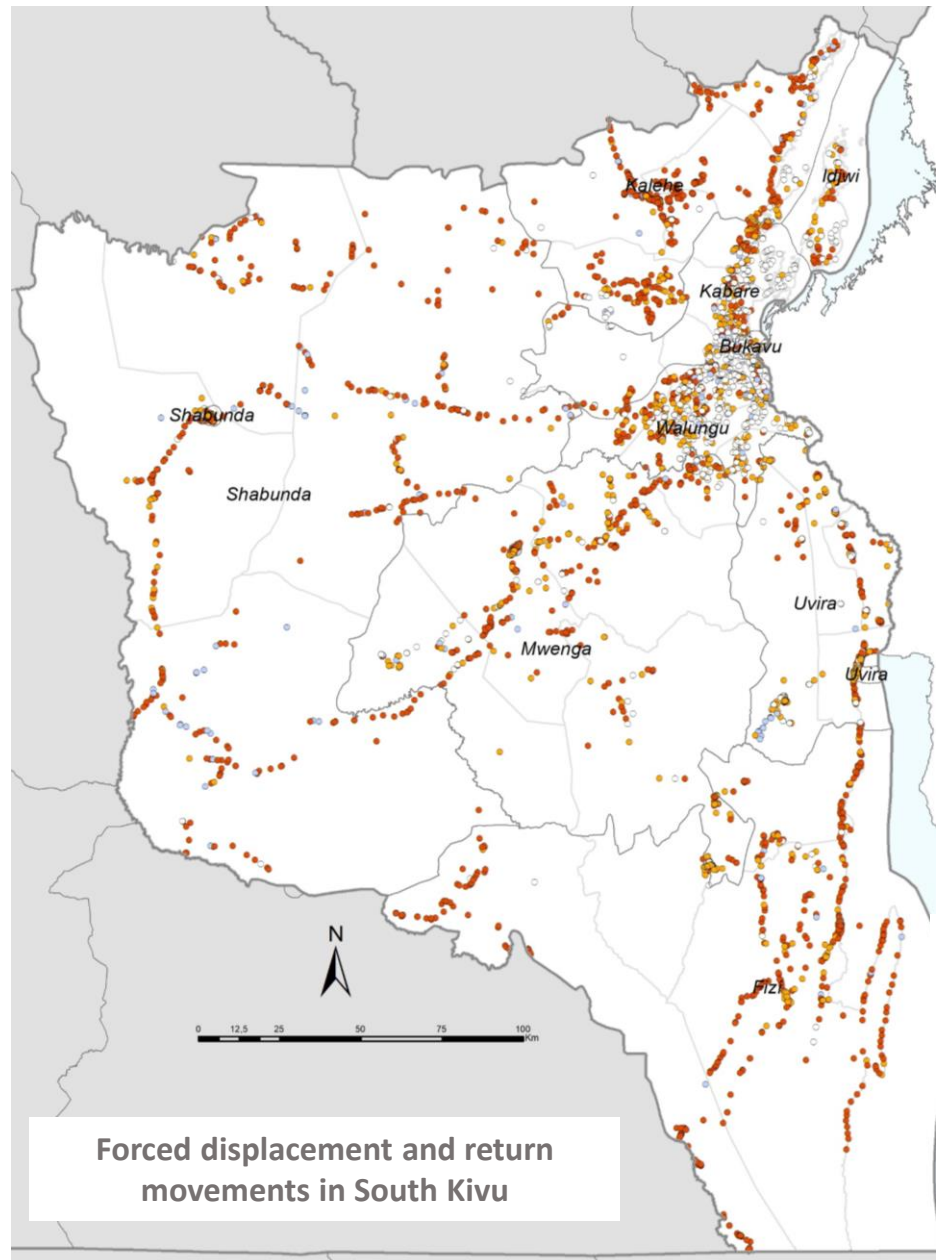
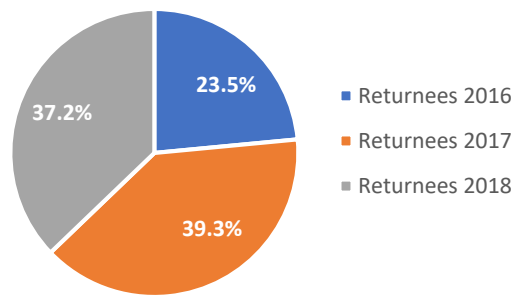


This dashboard provides the main findings of the mobility tracking assessments that were conducted in the province of South Kivu. These assessments were conducted in all the accessible villages during two periods: from **23 March to 30 April 2018** and from **1<sup>st</sup> to 23 July 2018** in **625 health areas**, which corresponds to **35 health zones**. For these assessments, a total of **4,140 villages** were evaluated through **12,759** key informant interviews conducted by IOM's partner RADPI.

### Displacement period



### Return period



**Forced displacement and return movements in South Kivu**



Year of Displacement*	Number of displaced individuals	Number of Returnees (internal)
2018	315,189	297,061
2017	317,993	314,320
2016	211,784	187,757

### Presence of IDPs and returnees in the villages assessed

- No IDPs, no returnees
- IDPs and Returnees
- IDPs only
- Returnees only
- Province
- Health zone
- Territories assessed

Villages assessed

**4,140**

Key informants

**12,759**

IDPs\*

**844,966**

Returnees\*

**799,138**

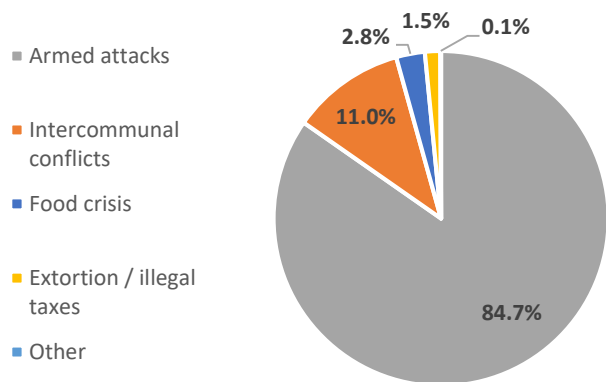
*The maps contained in this report are for illustration purposes only. The depiction and use of boundaries, geographic names, and related data shown on maps and included in this report are not warranted to be free of error nor do they imply judgment on the legal status of any territory, or any endorsement or acceptance of such boundaries by IOM. Sources: basemap RGC (Réfèrentiel Géographique commun de la RDC), DTM assessment DRC / RADPI, 23/03/18 – 30/04/18 and 1-23/07/18. GPS coordinates have not been verified in the field.*

\* Estimates

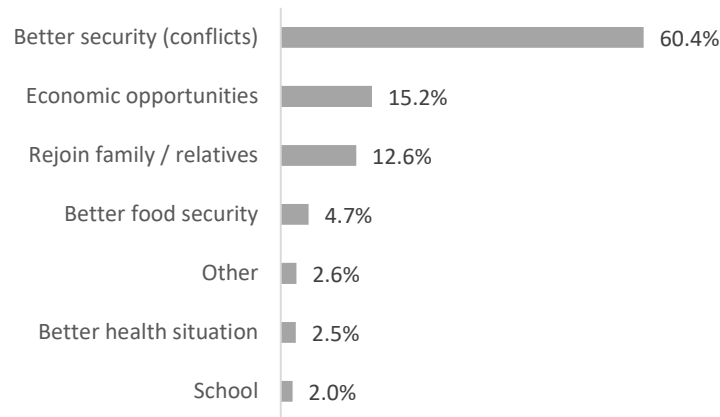
### Reason for displacement per year

Reason for displacement	Number of individuals displaced in 2016	% of individuals displaced in 2016	Number of individuals displaced in 2017	% of individuals displaced in 2017	Number of individuals displaced in 2018	% of individuals displaced 2018	Total number of IDPs	% of total IDPs
Armed attacks	183,762	86.8%	277,219	87.2%	254,716	80.8%	715,697	84.7%
Intercommunal conflict	19,028	9.0%	28,453	8.9%	45,288	14.4%	92,769	11.0%
Food crisis	5,848	2.8%	7,645	2.4%	9,908	3.1%	23,401	2.8%
Extortion / illegal taxes	3,145	1.5%	4,170	1.3%	5,213	1.7%	12,528	1.5%
Other	1	0.0%	506	0.2%	64	0.0%	571	0.1%
<b>Total</b>	<b>211,784</b>	<b>100.0%</b>	<b>317,993</b>	<b>100.0%</b>	<b>315,189</b>	<b>100.0%</b>	<b>844,966</b>	<b>100.0%</b>

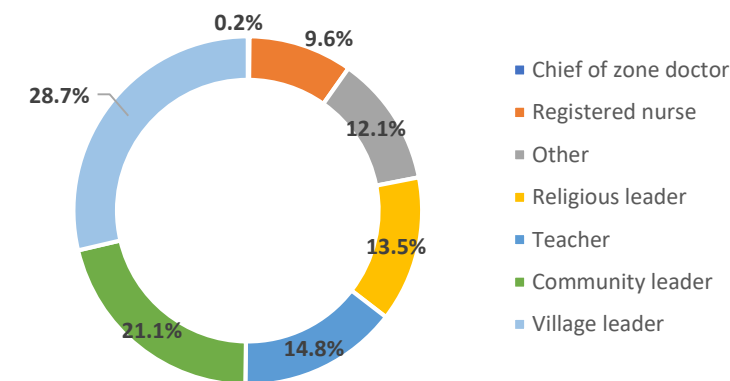
### Reason for displacement (from 2016 to 2018)



### Return driver (from 2016 to 2018)



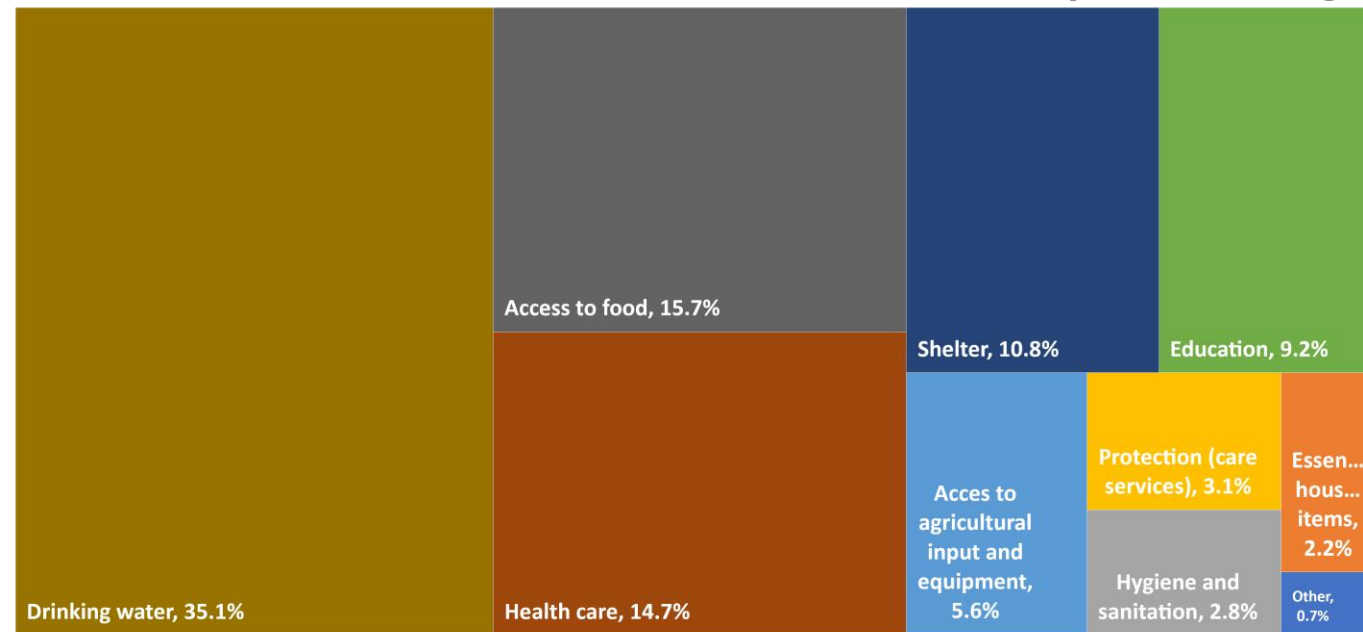
### Key informants (Round 2)



### Return drivers per year

Return driver	Number of individuals returned in 2016	% of individuals returned in 2016	Number of individuals returned in 2017	% of individuals returned in 2017	Number of individuals returned in 2018	% of individuals returned in 2018	Total number of Returnees	% total Returnees
Better food security	5,328	2.8%	15,677	5.0%	16,226	5.5%	37,231	4.7%
Better security (conflicts)	125,901	67.1%	186,146	59.2%	171,293	57.7%	483,340	60.5%
Better health situation	3,945	2.1%	6,863	2.2%	9,406	3.2%	20,214	2.5%
Economic opportunities	26,846	14.3%	48,164	15.3%	46,354	15.6%	121,364	15.2%
School	3,782	2.0%	6,625	2.1%	5,376	1.8%	15,783	2.0%
Rejoin family / relatives	17,674	9.4%	44,985	14.3%	37,719	12.7%	100,378	12.6%
Other	4,281	2.3%	5,860	1.9%	10,687	3.6%	20,828	2.6%
<b>Total</b>	<b>187,757</b>	<b>100%</b>	<b>314,320</b>	<b>100%</b>	<b>297,061</b>	<b>100%</b>	<b>799,138</b>	<b>100%</b>

## Priority needs in villages



## DTM Coverage\*

Territories	Number of villages (Territorial admin.)	Number of villages assessed during Round 1 only	Number of villages assessed during both Round 1 and Round 2	Number of villages assessed during Round 2 only	Total number of villages assessed (Round 1 and Round 2)	DTM coverage
BUKAVU	320	80	202	13	295	92.2%
FIZI	466	36	169	443	648	139.1%
IDJWI	86	13	53	4	70	81.4%
KABARE	135	59	149	219	427	316.3%
KALEHE	333	26	168	312	506	152.0%
MWENGA	527	96	88	304	488	92.6%
SHABUNDA	502	14	15	526	555	110.6%
UVIRA	334	67	108	283	458	137.1%
WALUNGU	228	123	295	275	693	303.9%
<b>Total</b>	<b>2,931</b>	<b>514</b>	<b>1,247</b>	<b>2,379</b>	<b>4,140</b>	<b>141.2%</b>

\*\* In the province of South Kivu, the DPS was not able to provide consolidated data informing on the number of villages per health area. The targeted number of villages to cover was determined using the data provided by the territorial administration. Therefore, 1,209 villages that were not in the initial list, were assessed by DTM teams, which explains that some coverage rates are greater than 100%.

## Forced displacement and return movements in South Kivu

