

OVERVIEW

Sudan hosts an estimated 10,878,024 internally displaced persons (IDPs) as of 10 September 2024, including those displaced both before and after the outbreak of conflict between the Sudanese Armed Forces (SAF) and Rapid Support Forces (RSF) on 15 April 2023.<sup>1</sup>

Prior to the onset of conflict on 15 April 2023, Sudan already hosted an estimated 3,820,772 IDPs.<sup>2</sup> Most were displaced across the Darfur states, with many being displaced due to conflict beginning in 2003 and 2004. Of these IDPs displaced prior to 15 April 2023, an estimated 28 per cent (1,055,402 IDPs) experienced secondary or tertiary displacement due to armed clashes after 15 April 2023, while approximately 2,765,370 IDPs reportedly remained in their initial areas of displacement.

An estimated 8,112,654 individuals were displaced internally since 15 April 2023. While displacement before 15 April 2023 was primarily concentrated within Darfur and Kordofan states, displacement after 15 April 2023 was more widespread.<sup>3</sup> IDPs originated from all 18 states in Sudan and were displaced to 9,058 locations in 183 localities, across all 18 states in Sudan. Khartoum represents the top state of origin for IDPs: an estimated 34 per cent of all IDPs in Sudan reportedly originated from Khartoum, followed by South Darfur (19%), and North Darfur (14%) states.

In addition to internal displacement, an estimated 2,344,904 individuals reportedly crossed borders into neighbouring countries since 15 April 2023.

This report analyses displacement pathways and key demographic information for the total population of IDPs across Sudan, as well as data on mixed cross-border movements into neighbouring countries. Annex 1 includes a full breakdown of IDPs per state, including top shelter categories per state.

KEY FIGURES



10,878,024 IDPs\*

2.77M prior to April 2023

8.11M post April 2023



2,191,117 Internally Displaced Households



9,058 Locations Across Sudan



2,344,904\*\* Individuals Crossed Borders Since 15 April 2023

34% Originated from Khartoum  
52% Children Under 18-Years-Old

Internal Displacement in Sudan Since 15 April 2023

This timeline only represents a few displacement events in Sudan since the onset of conflict on 15 April 2023. All reports available on the [DTM-IOM website](#).

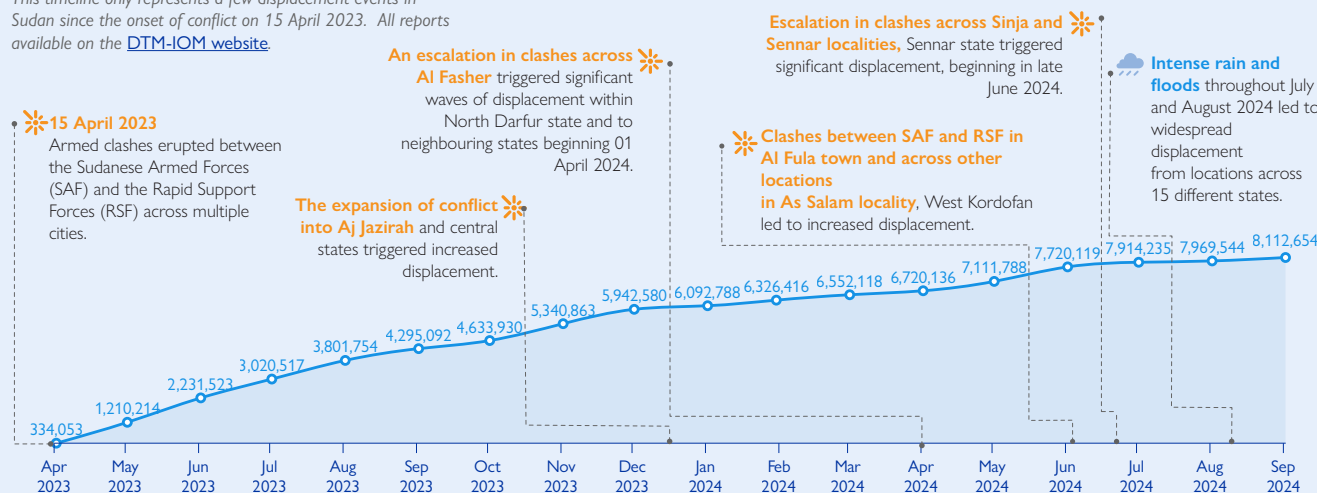


Figure 1: Timeline of Internal Displacement in Sudan Since 15 April 2023

1. DTM Sudan defines an internally displaced person as any person who has been forced or obliged to flee from their habitual residence due to an event dating from 2003 onwards.  
 2. As of 15 March 2023, Sudan hosted an estimated 3,820,772 IDPs. For more information, see [DTM Sudan Mobility Tracking Round 6](#).  
 3. The figure for the estimated number of IDPs displaced post 15 April 2023 (8,112,654 IDPs) includes the approximately 1,055,402 IDPs who were initially displaced prior to 15 April 2023 and experienced secondary or tertiary displacement since 15 April 2023. The figure reported for IDPs displaced prior to 15 April 2023 (2,765,370 IDPs) does not include those who displaced again since 15 April 2023 in order to avoid double counting.  
 \* Internal displacement data is valid as of 10 September 2024. \*\* Mixed cross-border movement data is valid as of 4 September 2024.

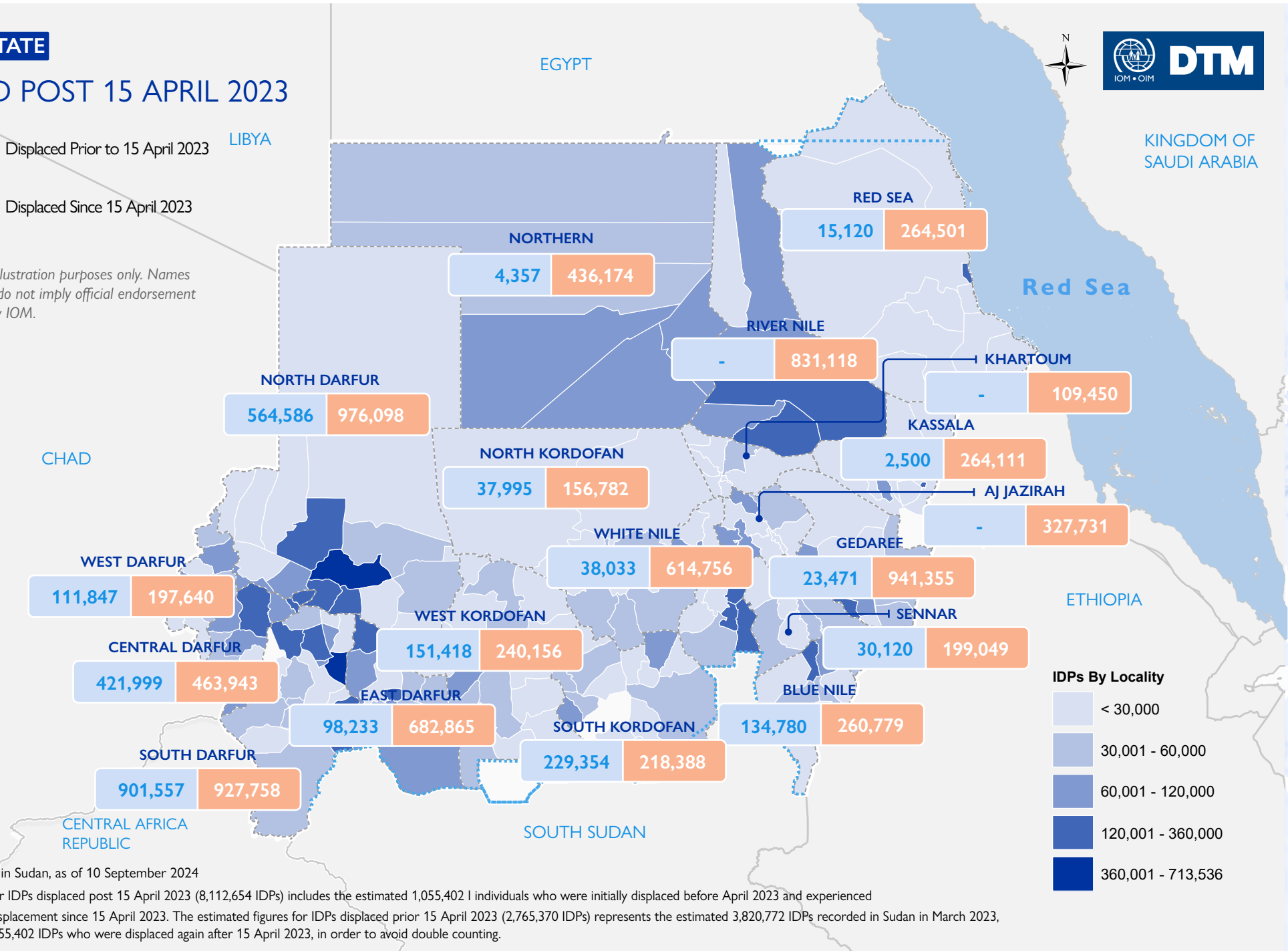
## IDPs PER STATE

### PRE AND POST 15 APRIL 2023

2,765,370 Displaced Prior to 15 April 2023

8,112,654 Displaced Since 15 April 2023

*This map is for illustration purposes only. Names and boundaries do not imply official endorsement or acceptance by IOM.*



Map 1: Reported IDPs in Sudan, as of 10 September 2024

The estimated figures for IDPs displaced post 15 April 2023 (8,112,654 IDPs) includes the estimated 1,055,402 individuals who were initially displaced before April 2023 and experienced secondary or tertiary displacement since 15 April 2023. The estimated figures for IDPs displaced prior 15 April 2023 (2,765,370 IDPs) represents the estimated 3,820,772 IDPs recorded in Sudan in March 2023, minus the estimated 1,055,402 IDPs who were displaced again after 15 April 2023, in order to avoid double counting.

## DISPLACEMENT PATHWAYS

The top states of origin were Khartoum (34%, 3,694,639 IDPs), South Darfur (19%), and North Darfur (14%). IDPs were reportedly displaced to 9,058 different locations in 183 localities across all 18 states. The highest proportion of IDPs were hosted in South Darfur (17%), North Darfur (14%), and Gedaref (9%) states.

Over a third (34%) of all IDPs originated from Khartoum. IDPs from Khartoum were displaced across all 18 states, including River Nile (21%), Gedaref (14%), and White Nile (14%). Notably, 93 per cent of IDPs in River Nile were reportedly displaced from Khartoum.

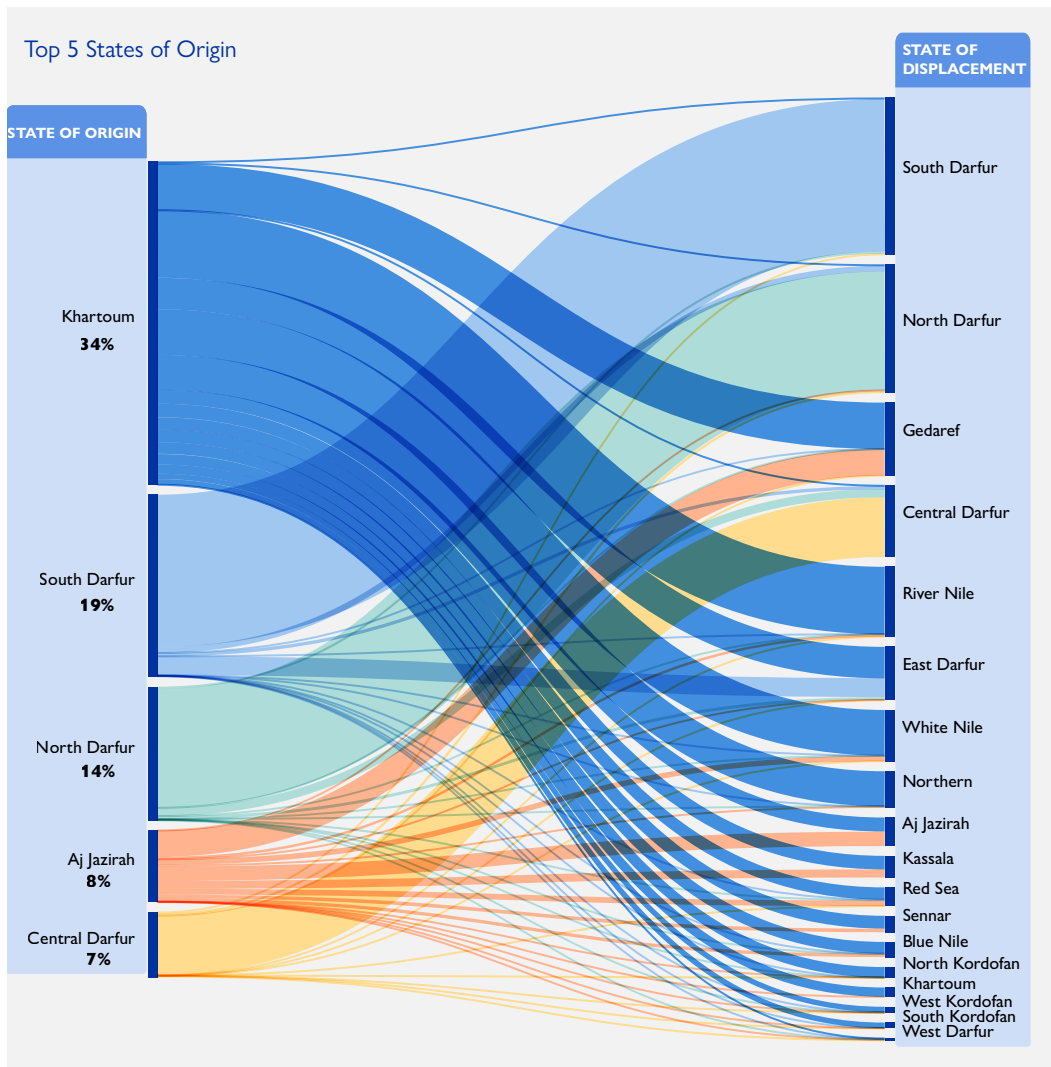


Figure 2: Displacement Pathways in Sudan from Top 5 States of Origin

State of Displacement	Mobility Overview (02) 10 September 2024	Mobility Update (07) 17 September 2024 <sup>(4)</sup>	Localities	Locations	Current HHs	IDPs %
Aj Jazirah	337,948	327,731	8	1,747	65,811	3%
Blue Nile	384,274	395,559	7	230	79,824	4%
Central Darfur	882,783	885,942	9	119	185,481	8%
East Darfur	778,598	781,098	9	48	153,607	7%
Gedaref	968,258	964,826	12	395	194,201	9%
Kassala	264,861	266,611	10	265	53,374	2%
Khartoum	108,265	109,450	7	379	21,814	1%
North Darfur	1,530,179	1,540,684	17	356	326,614	14%
North Kordofan	193,391	194,777	8	606	37,354	2%
Northern	428,558	440,531	7	470	89,501	4%
Red Sea	277,648	279,621	10	286	56,684	3%
River Nile	795,569	831,118	7	1,051	165,760	8%
Sennar	261,748	229,169	7	420	44,975	2%
South Darfur	1,827,720	1,829,315	20	152	370,265	17%
South Kordofan	446,697	447,742	14	503	84,463	4%
West Darfur	309,397	309,487	8	131	62,323	3%
West Kordofan	386,810	391,574	14	675	72,191	4%
White Nile	651,678	652,789	9	1,225	126,875	6%
<b>Total</b>	<b>10,834,382</b>	<b>10,878,024</b>	<b>183</b>	<b>9,058</b>	<b>2,191,117</b>	<b>100%</b>

Table 1: Estimated IDPs Per State

4. The dates in the table reference date of report publication.

## Displacement Pathways (Continued)

In contrast, IDPs from Darfur and Kordofan states were primarily displaced within these same states, across the western region of Sudan. Approximately 84 per cent of IDPs from South Darfur were displaced to other locations within South Darfur and nearly 16 per cent were displaced to other states in the Darfur region. Less than 1 per cent were reportedly displaced to other states.

South Darfur remains the largest host state for IDPs displaced both before and after 15 April 2023, with an estimated 1,829,315 IDPs as of 10 September 2024. Of these, approximately 51 per cent were displaced since 15 April 2023.

## LOCATION TYPES

Of the total IDP population, approximately 60 per cent were recorded in urban across Sudan, while 40 per cent were reportedly in rural areas.

However, the proportion of IDPs in rural versus urban locations varies across each state.

For example, an estimated 73 per cent of IDPs in Northern were displaced in rural locations, compared to approximately 27 per cent in urban locations.

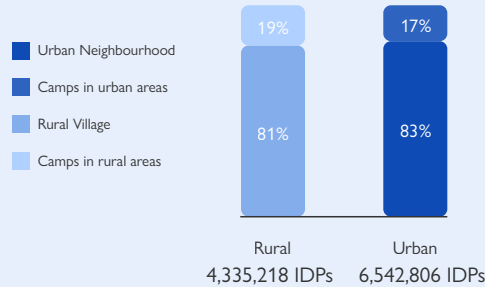


Figure 3: Rural and Urban Locations of IDPs

## SHELTER TYPES FOR IDP HOUSEHOLDS

Approximately 51 per cent of IDP households sought shelter with host families and communities. Others reportedly stayed in camps (18%), informal settlements or open areas (15%), schools or other public buildings (9%), and private rented accommodation (5%).<sup>5</sup> The distribution of shelter types varied widely across different states.

The majority of IDP households in Aj Jazirah (86%) and Khartoum (85%) reportedly stayed with host families. In contrast, IDP households in South Darfur reportedly stay in camps (47%), with host families (24%), and in open area gathering sites (20%).

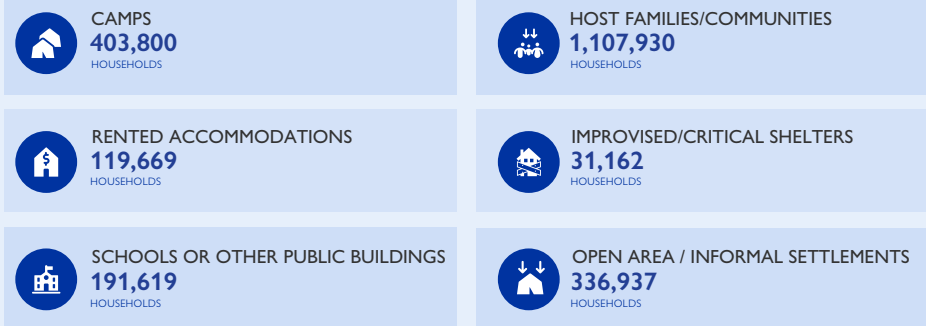


Figure 4: Reported Shelter Typologies Among IDP Households

5. For operational definitions of shelter typologies, see [DTM Sudan Methodological Note](#).

6. Totals may not equal 100 per cent due to rounding.

## DEMOGRAPHIC PROFILES

Approximately 54 per cent of IDPs were female, while an estimated 46 per cent were male.<sup>6</sup> Over half of IDPs (54%) were children under the age of 18-years-old, while approximately a quarter (26%) were children under five-years-old. Approximately 28 per cent of IDPs were female children under 18-years-old, who reportedly face unique protection risks. Of total IDPs in each state, the states with the highest proportion of displaced children under the age of 18-years-old were Central Darfur (57%) and Blue Nile (57%).

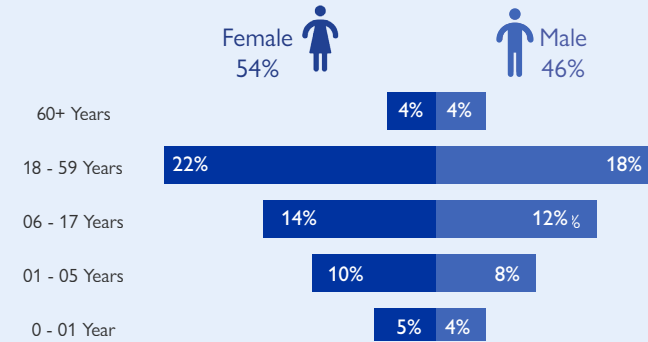


Figure 5: Reported Sex and Age Distribution of IDPs

## SUDANESE AND NON-SUDANESE NATIONALS

Of the total population of IDPs in Sudan, DTM estimated that 121,616 IDPs (approximately 1%) were non-Sudanese nationals. White Nile state hosted the highest proportion of foreign national IDPs, reflecting its role as a transit state for South Sudanese nationals. Specifically, approximately 14 per cent of IDPs in White Nile state were non-Sudanese nationals.

### Proportion of Non-Sudanese IDPs Per State

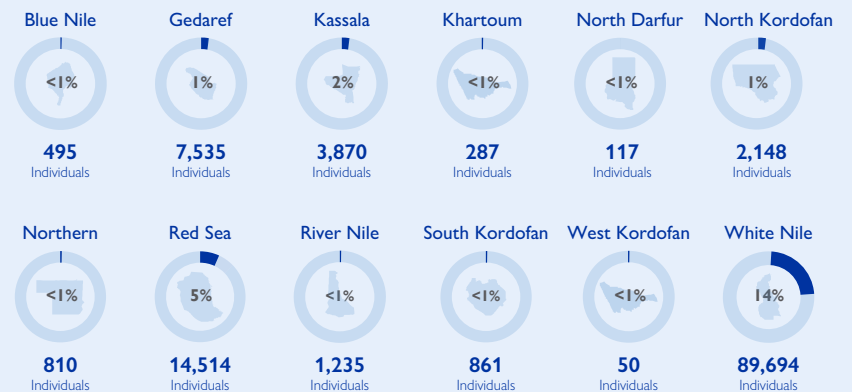


Figure 6: Estimated Non-Sudanese IDPs Per State

## MIXED CROSS-BORDER MOVEMENT SINCE 15 APRIL 2023

Since the outbreak of the conflict on 15 April 2023, an estimated 2,344,904 individuals crossed borders into neighbouring countries.<sup>7</sup> The majority reportedly crossed into Chad (35%), South Sudan (34%), and Egypt (22%).<sup>8</sup> Of these individuals, an estimated 62 per cent were Sudanese nationals, while 38 per cent were foreign nationals or returnees. However, the proportion of Sudanese versus non-Sudanese nationals varied by country. An estimated 97 per cent of individuals who crossed into Egypt were reportedly Sudanese nationals. By contrast, an estimated 77 per cent of individuals who crossed into South Sudan were non-Sudanese nationals, primarily South Sudanese nationals.

Field teams also reported increased cross border movement following continued clashes in [Al Fasher locality](#), with some households displaced across the border to Chad via At Tina border crossing. There were also reports of increased movement from Blue Nile and White Nile states towards South Sudan following the [escalation of clashes](#) across Sennar state.<sup>9</sup>

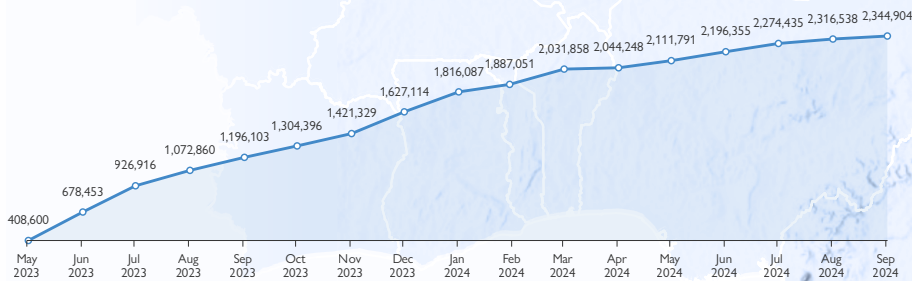
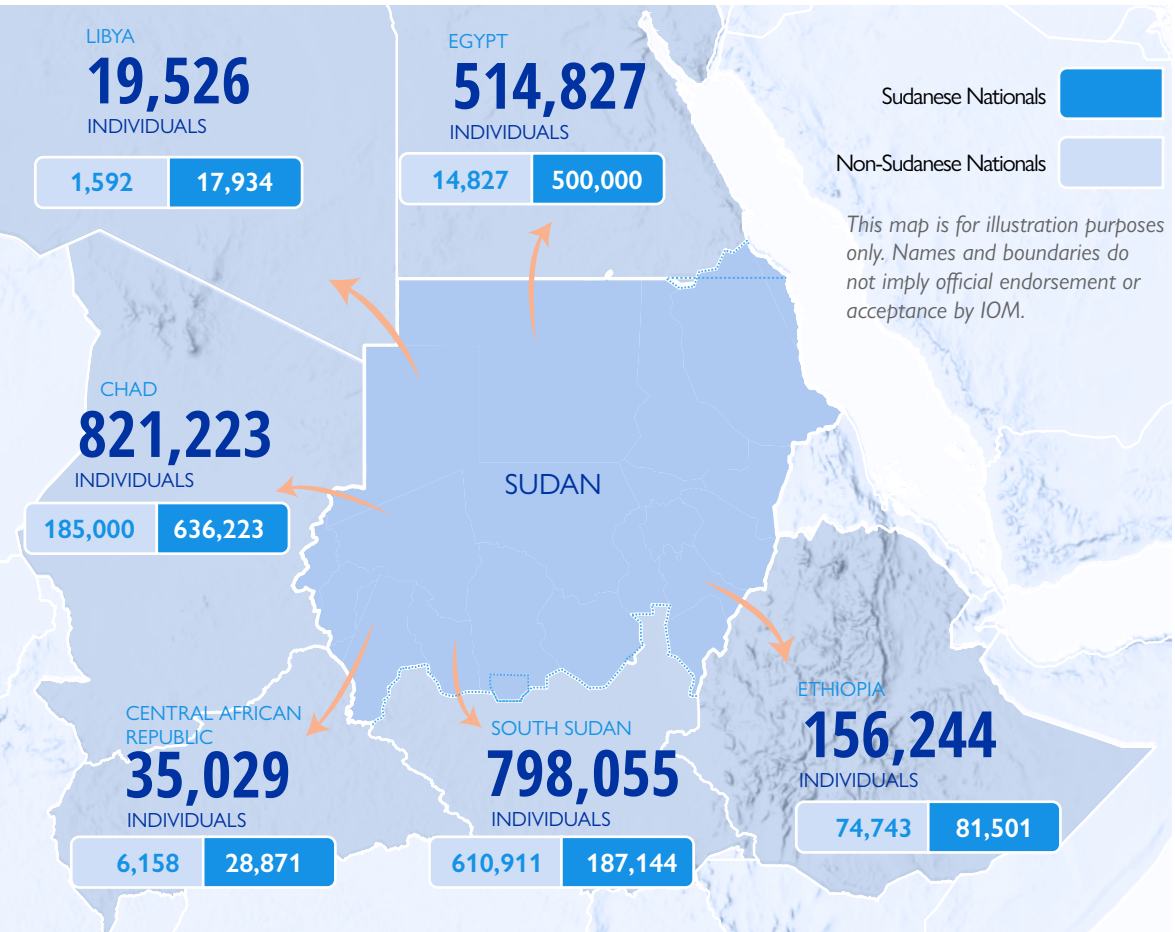


Figure 7: Mixed Cross-Border Movements from Sudan to Neighbouring Countries Since 15 April 2023



Map 2: Reported Cross-Border Movement from Sudan to Neighbouring Countries Since 15 April 2023

7. Data on cross-border movement is collected from various sources: Central African Republic (IOM, UNHCR, National Commission for Refugees); Chad (IOM, UNHCR); Egypt (Egypt Ministry of Foreign Affairs); Ethiopia (IOM); Libya (IOM); South Sudan (IOM, UNHCR).

8. Data on cross-border movement valid as of 4 September 2024, with the exception of Chad (31 August 2024), Central African Republic (11 August) and Egypt (20 March 2024). Estimated figures for cross-border displacement were not updated since [Sudan Mobility Overview \(2\)](#), published 10 September 2024, due to on-going data collection.

9. For further information on cross-border movement, see: [DTM Chad: Flash Update](#); [DTM Libya: Profile of Sudanese Migrants in Libya](#); [Population Movement from Sudan to the East and Horn of Africa Dashboard](#); [Ethiopia- Sudan Movements Update](#); and [Population Movement from Sudan to South Sudan Dashboard](#).

### CONTACT DTM SUDAN

Tel.: +249 157 554 600/1/2

E-mail: [dtmsudan@iom.int](mailto:dtmsudan@iom.int)

Website: [www.sudan.iom.int](http://www.sudan.iom.int) | [www.dtm.iom.int/sudan](http://www.dtm.iom.int/sudan)



DISPLACEMENT TRACKING MATRIX (DTM)

### DISCLAIMER

Due to on-going insecurity, DTM collects data through a dual combination of in-person and remote interviews with key informants across its network. Figures should be understood as preliminary estimates and are subject to change pending future verification exercises. Percentages across the report may not equal 100 per cent due to rounding.

### METHODOLOGY

DTM Sudan is a suite of methodological tools which aims to track and monitor displacement. DTM collects primary data, with a focus on providing best estimates for the humanitarian community. For further information, see [DTM Methodological Note](#). All reports and datasets are available on the DTM-IOM website, along with an [interactive dashboard](#). Note that figures in the dashboard may be updated 48-72 hours following the publication of reports and datasets.

With the support of:



REGIONAL DATA HUB MENA



Funded By European Union Humanitarian Aid

## ANNEX 1: OPERATIONAL MATRIX

The following table outlines reported IDPs per state, including those displaced before and after 15 April 2023. For each state, the estimated number of IDPs displaced post 15 April 2023 includes the IDPs initially displaced prior to 15 April 2023 who were displaced again after 15 April 2023. The estimated number of IDPs displaced prior to 15 April 2023 does not include those who were displaced again since 15 April 2023 in order to avoid double counting.

State Of Displacement	Total IDPs	IDP Households	Displaced Prior to 15 April 2023	Displaced Post 15 April 2023	Top Three Shelter Types Among IDPs Per State					
					Top Shelter Category	%	2nd Most Common Shelter Category	%	3rd Most Common Shelter Category	%
Aj Jazirah	327,731	65,811	-	327,731	Host Community	86%	Schools/Public Buildings	12%	Informal Settlement/Open Area	1%
Blue Nile	395,559	79,824	134,780	260,779	Host Community	59%	Informal Settlement/Open Area	17%	Rented Accommodation	11%
Central Darfur	885,942	185,481	421,999	463,943	Informal Settlement/Open Area	38%	Camp	34%	Host Community	18%
East Darfur	781,098	153,607	98,233	682,865	Host Community	69%	Schools/Public Buildings	13%	Camp	10%
Gedaref	964,826	194,201	23,471	941,355	Host Community	82%	Rented Accommodation	10%	Schools/Public Buildings	8%
Kassala	266,611	53,374	2,500	264,111	Host Community	67%	Rented Accommodation	19%	Schools/Public Buildings	12%
Khartoum	109,450	21,814	-	109,450	Host Community	85%	Rented Accommodation	13%	Improvised/Critical Shelters	2%
North Darfur	1,540,684	326,614	564,586	976,098	Camp	43%	Host Community	29%	Informal Settlement/Open Area	19%
North Kordofan	194,777	37,354	37,995	156,782	Host Community	82%	Informal Settlement/Open Area	10%	Schools/Public Buildings	4%
Northern	440,531	89,501	4,357	436,174	Host Community	81%	Rented Accommodation	9%	Schools/Public Buildings	5%
Red Sea	279,621	56,684	15,120	264,501	Host Community	41%	Rented Accommodation	36%	Schools/Public Buildings	13%
River Nile	831,118	165,760	-	831,118	Host Community	71%	Rented Accommodation	19%	Schools/Public Buildings	6%
Sennar	229,169	44,975	30,120	199,049	Host Community	89%	Informal Settlement/Open Area	7%	Schools/Public Buildings	2%
South Darfur	1,829,315	370,265	901,557	927,758	Camp	47%	Host Community	24%	Informal Settlement/Open Area	20%
South Kordofan	447,742	84,463	229,354	218,388	Host Community	53%	Informal Settlement/Open Area	36%	Schools/Public Buildings	9%
West Darfur	309,487	62,323	111,847	197,640	Host Community	45%	Schools/Public Buildings	21%	Camp	15%
West Kordofan	391,574	72,191	151,418	240,156	Host Community	56%	Informal Settlement/Open Area	35%	Schools/Public Buildings	8%
White Nile	652,789	126,875	38,033	614,756	Host Community	56%	Informal Settlement/Open Area	19%	Schools/Public Buildings	17%
<b>Total</b>	<b>10,878,024</b>	<b>2,191,117</b>								