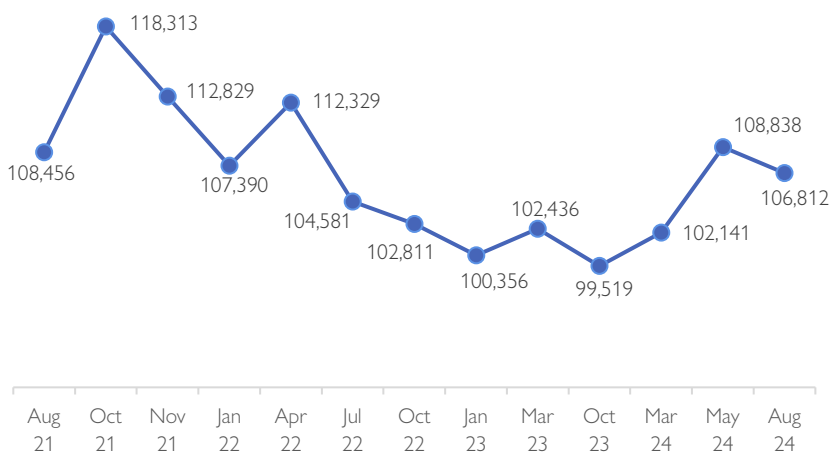


## Overview

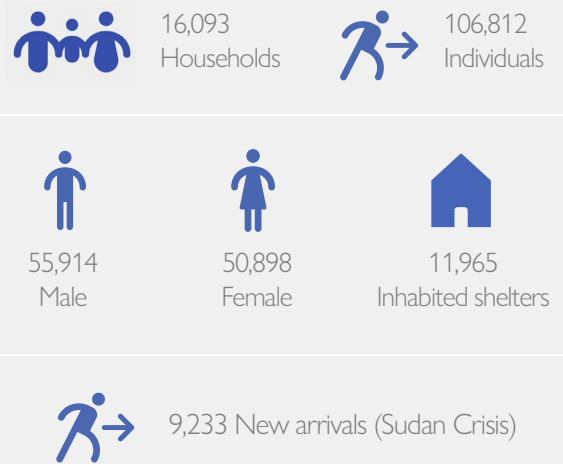
As of the end of August 2024, 137,430 individuals (31,025 households) are biometrically registered as active resident in the site, representing two per cent increase in registered individuals since January 2024 following the latest biometric registration maintenance in Bentiu IDP Camp.

Recognizing that there have been significant population changes since the last overall biometric registration / verification, IOM DTM conducts occasional population counts to monitor population dynamics and displacement trends. This exercise shows that the actual number of persons currently living in Bentiu IDP Camp remains lower than the registered total.

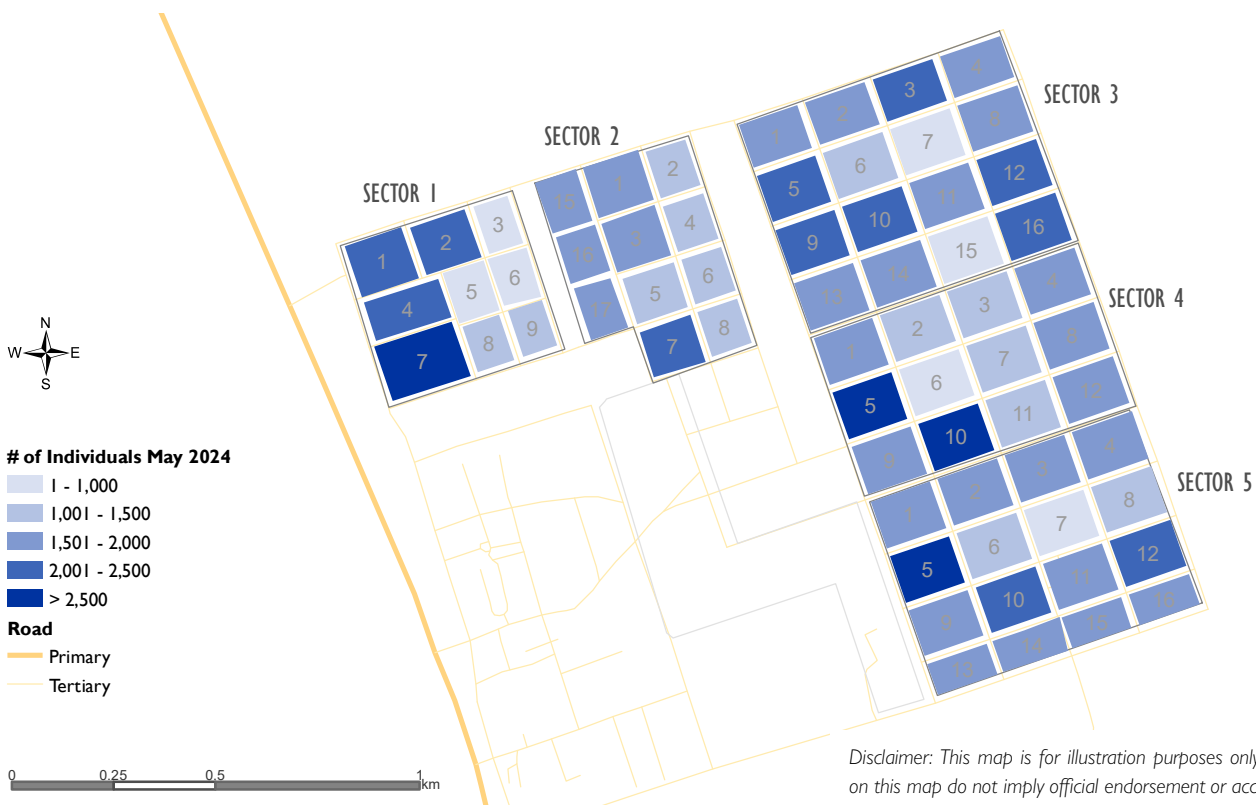
### Population flows



### Key Figures



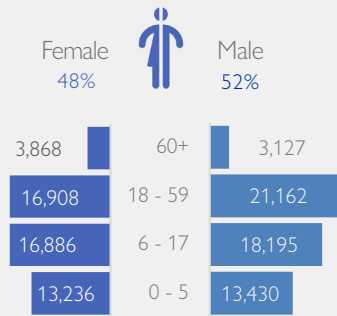
### Map of block distribution



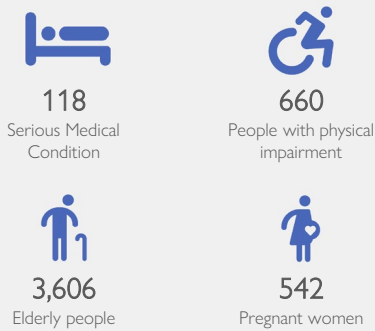
Disclaimer: This map is for illustration purposes only. Names and boundaries on this map do not imply official endorsement or acceptance by IOM.

Data collection: August 2024

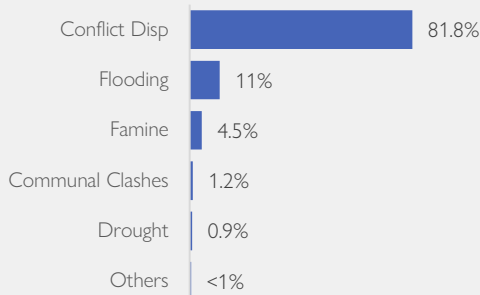
## Demographics



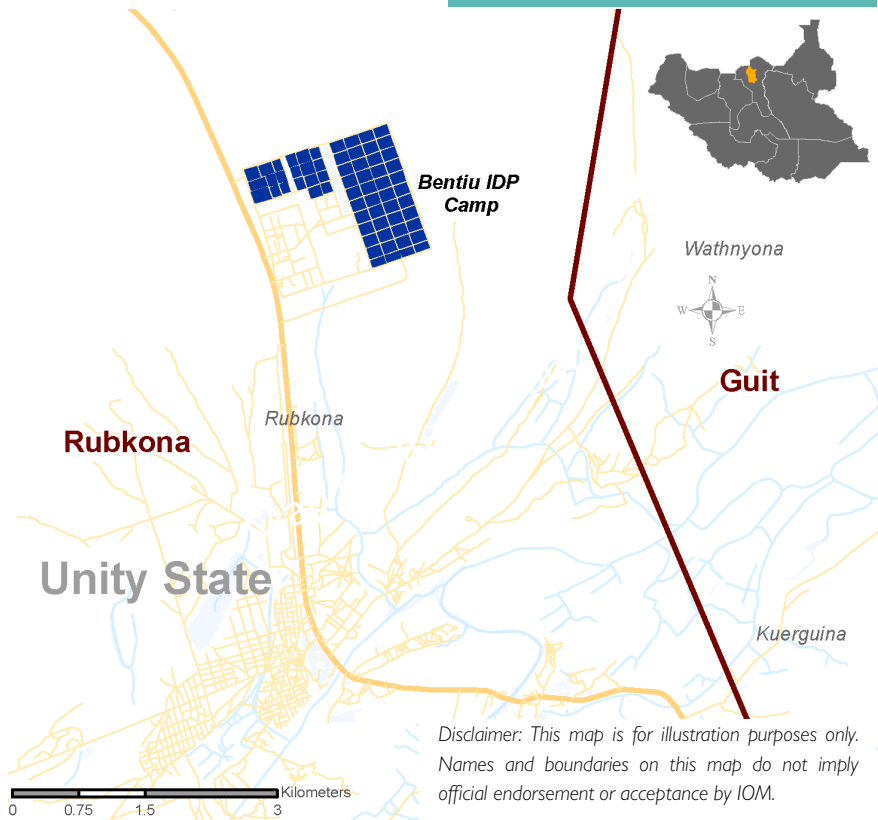
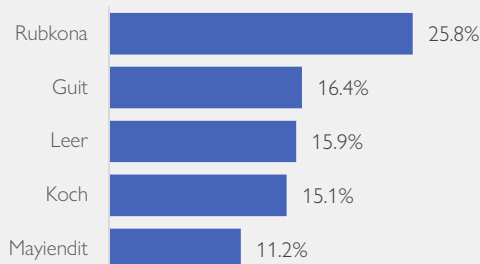
## Reported vulnerabilities



## Reasons for displacement



## TOP 5 counties of habitual residence in Unity (99.7%)



Registration activities are essential for IOM's Displacement Tracking Matrix (DTM) partners to create beneficiary lists, which facilitate effective resource allocation, vulnerability targeting, and aid delivery. The IOM DTM in South Sudan has been instrumental in providing biometric registration and headcounts, prioritizing the immediate information needs necessary for guiding direct assistance to vulnerable populations at a local level. The registration data is captured by DTM-led teams through direct individual interviews conducted in target locations, typically with the heads of households. This method ensures that the data collected is accurate and representative of the household's needs.

As per the findings from the August 2024 population count, the Bentiu Internally Displaced Persons (IDP) camp population stands at 106,812 individuals (16,093 households) residing in 11,965 inhabited shelters, averaging about nine individuals per shelter. This represents a two percent decrease compared to May 2024.

The slight decrease in the population is primarily attributed to voluntary departures of some displaced individuals from the IDP Camp.

The blocks with the largest populations were recorded across the following sectors: Sector 1 Block 7 (3,919 individuals), Sector 5 Block 5 (3,453 individuals), Sector 1 Block 1 (3,092 individuals), Sector 4 Block 5 (2,609 individuals) and Sector 1 Block 4 (2,445 individuals). These figures highlight specific areas within the camp where population density is highest, which can help guide resource allocation and aid delivery more effectively.