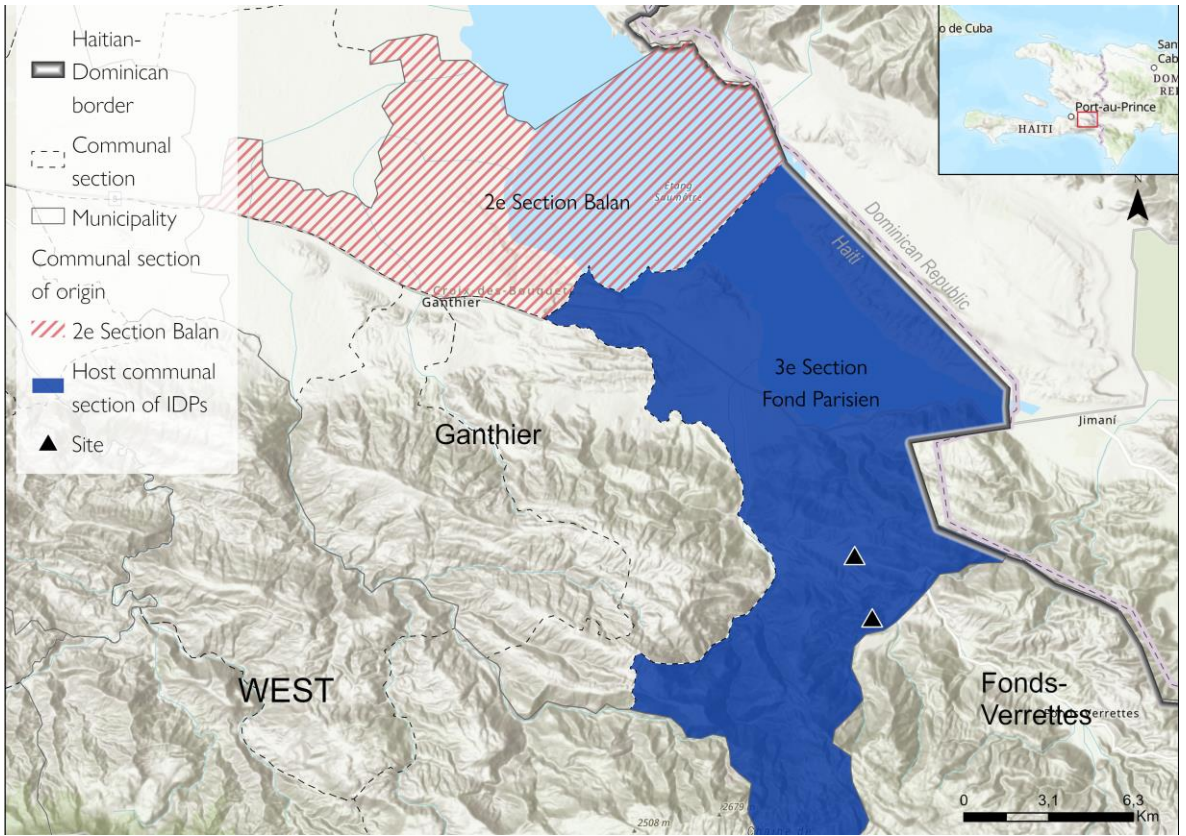


This information was collected following attacks that occurred on 04 September 2024 in the municipality of Ganthier, more precisely in the 2<sup>nd</sup> communal section of Balan. A total of 830 people (172 households) were displaced following these attacks. These people took refuge in the 3<sup>rd</sup> communal section of Fonds Parisien, most of them (66%) with relatives in host families, while 34% took refuge in two sites. The municipality of Ganthier has been increasingly affected by armed attacks in recent weeks, the most significant in July and August 2024, leading to the displacement of nearly 6,000 people (see [ETT 45.1](#)) who took refuge in the same 3<sup>rd</sup> communal section of Fonds Parisien which has become an important host location for persons displaced in the municipality of Ganthier.

## Origins and host locations of displaced persons



## Demography

- 172** Displaced Households
- 830** Displaced Individuals
- 66%** of displaced individuals took refuge with host families
- 34%** in sites
- 2 sites** hosting **280** displaced individuals

## Priority needs of displaced persons

- WATER
- FOOD
- MATTRESS
- CLOTHING

*This map is for illustration purposes only. The depiction and use of boundaries, geographic names and related data shown on maps and included in this report are not warranted to be error free nor do they imply judgment on the legal status of any territory, or any endorsement or acceptance of such boundaries by IOM.*

## Sites accommodating displaced individuals affected by these incidents

Department (Admin 1)	Municipality (Admin 2)	Communal section (Admin 3)	Site name	Status of the site	Households newly displaced following these incidents	Individuals newly displaced following these incidents	Households present on the site before these incidents	Individuals present on the site before these incidents	Total of households on the site	Total of individuals on the site
West	Ganthier	3rd communal of section Fonds Parisien	Club Bively/ Isely	Already existing before these incidents	14	75	38	175	52	250
West	Ganthier	3rd communal of section Fonds Parisien	Ecole Nationale Dubois	New	48	205	0	0	48	205
				Total	62	280				

## Displaced individuals hosted by host families

Department (Admin 1)	Municipality (Admin 2)	Communal section (Admin 3)	Households	Individuals
Ouest	Ganthier	3rd communal of section Fonds Parisien	110	550
			Total	550