

FLASH REPORT #174 POPULATION DISPLACEMENT

North-west/North-central Nigeria

Benue, Kaduna, Katsina, Sokoto and Zamfara states — Nigeria

28 August 2024

 **9,883** Individuals Affected
  **24** Affected Locations
  **1,426** Damaged Shelters
  **209** Casualties
  Movement Trigger:

Event Overview

On 22 August 2024, armed bandits attacked the community of Afia in Tsaav ward of Ukum Local Government Area (LGA) in Benue State. There were reports of 43 injuries and six fatalities. The attacks affected 159 individuals in 32 households. The affected individuals included 55 children, 57 women and 47 men.

Between 23 and 25 August 2024, armed bandits attacked the communities of Gangara in Gangara ward of Giwa LGA, Kurmin B in Agunu ward and Ungwan Pah in Ankwa ward of Kachia LGA, Rafin Kunu in Kufana ward and Ugakala in Maro ward of Kajuru LGA, Gurza in Garu ward of Lere LGA, Gidan Ali in Ikulu ward and Fadan Kufai in Madakiya ward of Zangon Kataf LGA, all in Kaduna State. There were reports of 63 injuries and 11 fatalities. The attacks affected 3,487 individuals in 596 households and displaced 1,920 individuals from Ungwan Pah in Ankwa LGA to Kufai Gidan in Gumel ward of Kachia LGA, 640 individuals were displaced from Ugakala in Maro ward of Kajuru LGA to Cattle Crossing in Agunu ward of Kachia LGA and 162 individuals were displaced from Gidan Ali in Ikulu ward to Ungwan Kusolo in Kamantan ward of Zangon Kataf LGA. The affected individuals included 1,977 children, 857 women and 653 men.

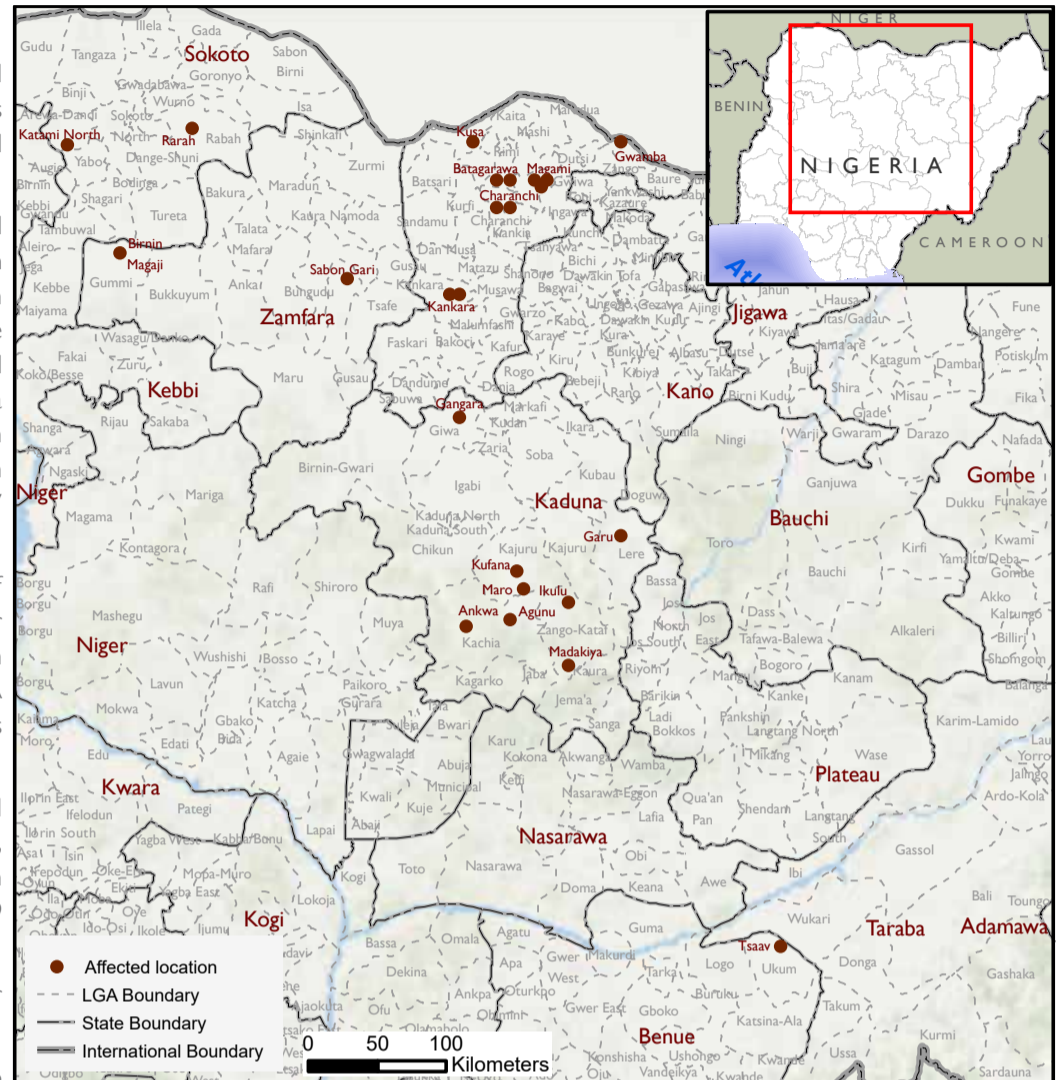
Also, between 20 and 24 August 2024, heavy rainfall resulting to floods affected the communities of Danbaiwa in Batagarawa ward, Wadigawa in Dandagoro ward of Batagarawa LGA, Safana and Unguwar Magaza in Charanchi ward of Charanchi LGA, Riko in Kusa ward of Jibia LGA, Dan Dutse and Matsiga in Kankara ward of Kankara LGA, Hayin Gabas, Hayin Yamma and Walawa in Magami ward of Mani LGA and Gwamba in Gwamba LGA of Zango LGA, all in Katsina State. There were reports of nine injuries and one fatality. The affected individuals included 2,571 children, 823 women and 572 men.

On 23 August 2024, floods occurred in the communities of Rarah in Rarah ward of Rabah LGA and Katami in Katami North ward of Silame LGA of Sokoto State and the communities of Gummi Town, Gayari, Falale, Gamo, Daki Takwas and Birnin Magaji in Birnin Magaji ward of Gummi LGA and Birnin Ruwa in Sabon Gari ward of Gusau LGA in Zamfara State. There were reports of 57 injuries and 19 fatalities. The affected individuals included 1,267 children, 631 women and 373 men.

Of all the needs identified, food, non-food items (NFI), and shelter were the most prevalent. Other needs included security, psychosocial support, and WASH.

Following these events, DTM (Displacement Tracking Matrix) field staff conducted rapid assessments to inform the humanitarian community and Government/partners, and to enable a targeted response.

Nigeria's north-central and north-west zones are afflicted with a multi-dimensional crisis. Long-standing tensions between ethnic and religious groups often result in attacks and banditry or hirabah. These attacks involve kidnapping and grand larceny along major highways by criminal groups. During the past years, the crisis accelerated and has resulted in widespread displacement across the north-central and north-west regions.



Map 1. Showing locations affected.

This map is for illustration purposes only. The boundaries and names shown, and the designations used on this map do not imply official endorsement or acceptance by the International Organization for Migration.



Fig. 2. Most needed assistance

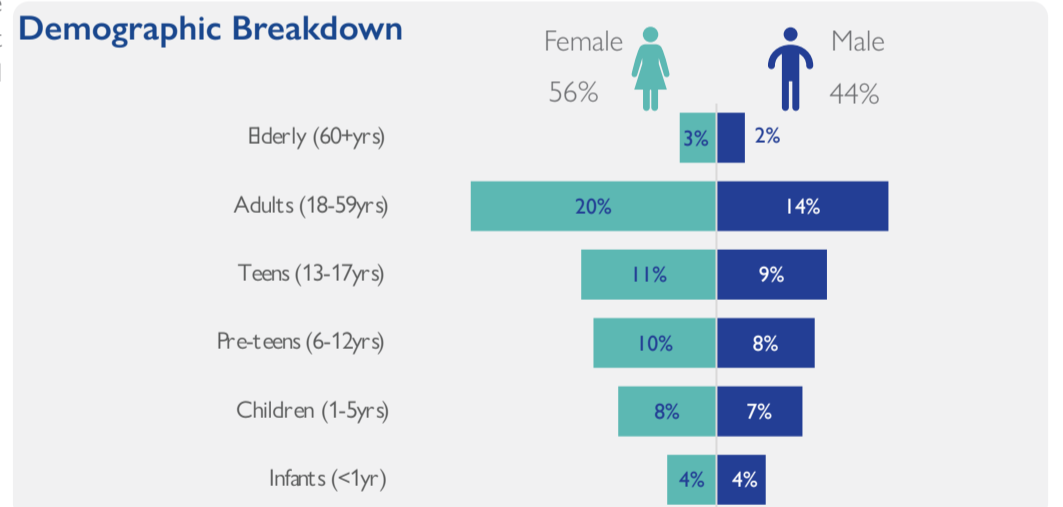


Fig. 3. Gender breakdown of affected population

State	LGA	Ward	Incident type	Number of Affected Household	Number of Affected Individuals			Casualty	Number of Partially Damaged Shelters	Number of fully Damaged Shelters	
					Male	Female	Total				
Benue	Ukum	Tsaav	Attacks	32	68	91	159	49	0	0	
		Zangon Kataf	Madakiya	Attacks	6	12	18	30	2	2	0
Kaduna	Kajuru	Ikulu	Attacks	32	76	86	162	2	7	0	
		Maro	Attacks	109	298	342	640	28	80	0	
	Kachia	Kufana	Attacks	29	70	78	148	4	0	0	
		Ankwa	Attacks	320	860	1,060	1,920	16	0	0	
	Kaduna	Giwa	Agunu	Attacks	18	46	49	95	8	9	0
			Gangara	Attacks	56	164	194	358	8	23	0
			Lere	Attacks	26	61	73	134	6	0	0
Katsina	Zango	Gwamba	Floods	26	80	102	182	0	10	26	
		Batagarawa	Batagarawa	Rainfall	125	359	461	820	4	25	100
	Katsina	Dandagoro	Rainfall	70	258	304	562	4	26	44	
		Jibia	Floods	34	112	131	243	0	28	6	
	Katsina	Mani	Magami	Rainfall	32	144	139	283	2	8	24
			Charanchi	Floods	21	64	84	148	0	16	5
Sokoto	Kankara	Kankara A&B	Floods	228	772	956	1,728	0	108	158	
		Katami North	Floods	136	270	414	684	13	85	135	
		Rabah	Floods	218	386	589	975	15	64	53	
Zamfara	Gusau	Sabon Gari	Floods	25	50	73	123	12	16	31	
		Gummi	Floods	96	208	281	489	36	215	122	
Total				1,639	4,358	5,525	9,883	209	722	704	

Methodology: Crises and emergencies require the humanitarian community to act urgently. As a subcomponent of DTM's mobility tracking, flash reports utilise direct observation and a broad network of key informants to monitor sudden displacement resulting from events like natural disasters or attacks and collect information on the number, profile, and immediate needs of affected populations. In the initial 24 - 48 hours after an incident, DTM Nigeria activates a rapid assessment to document the event, urgent needs of affected individuals, demographic information, and impact. If displacement occurs, DTM Nigeria issues an Early Warning Flash/Incident report within 72 hours, notifying partners and stakeholders.

Disclaimer: The opinions expressed in the report are those of the authors and do not necessarily reflect the views of the International Organization for Migration (IOM). The designations employed and the presentation of material throughout the report do not imply the expression of any opinion whatsoever on the part of IOM concerning the legal status of any country, territory, city or area, or its authorities, or concerning its frontiers or boundaries.

When quoting, paraphrasing, or in any other way using the information mentioned in this report, the source needs to be stated appropriately as follows: "Source: Displacement Tracking Matrix (DTM) of the International Organization for Migration (IOM), August 2024."

