

DISPLACEMENT TRACKING MATRIX — NIGERIA EMERGENCY TRACKING TOOL (ETT)

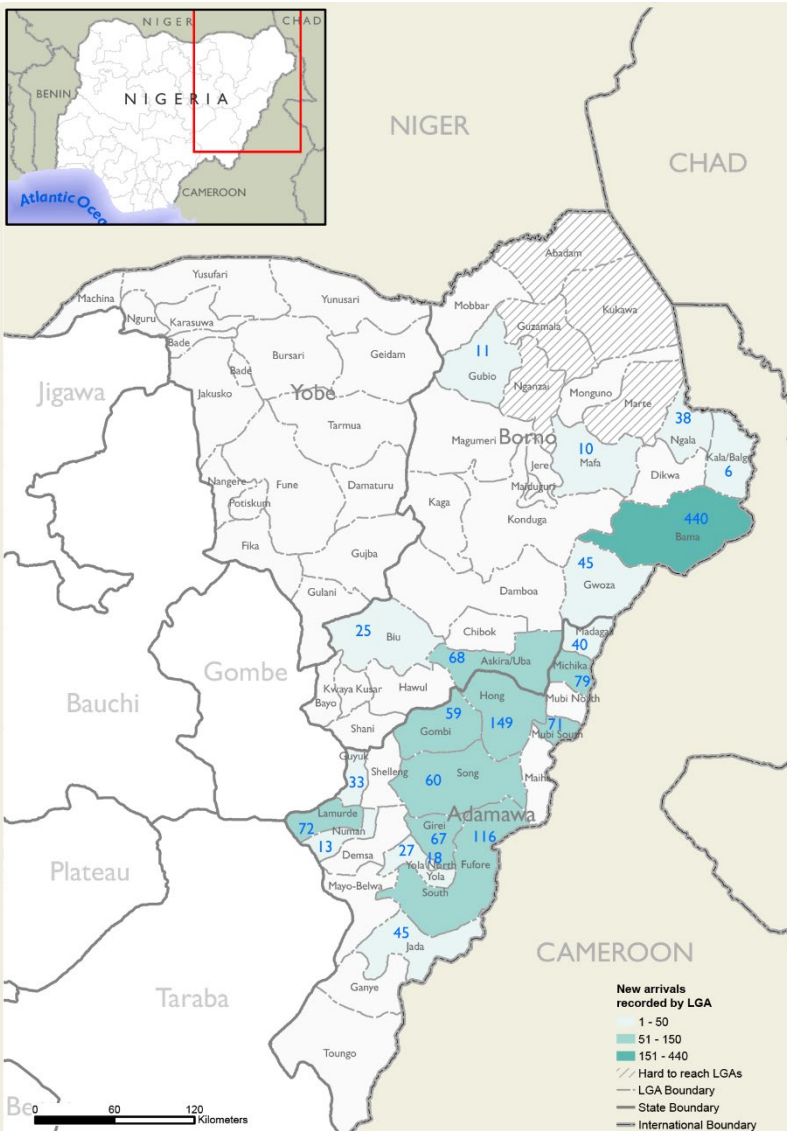
SUMMARY OF MOVEMENTS IN BORNO AND ADAMAWA STATES, 12 – 18 August 2024

DASHBOARD: 393

DATA COLLECTION: Week 32, 2024

DATE OF PUBLICATION: 23 August 2024

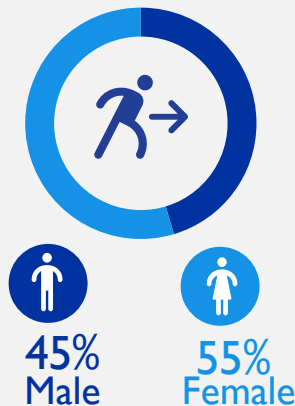
OVERVIEW OF DISPLACEMENTS



KEY FIGURES



GENDER BREAKDOWN



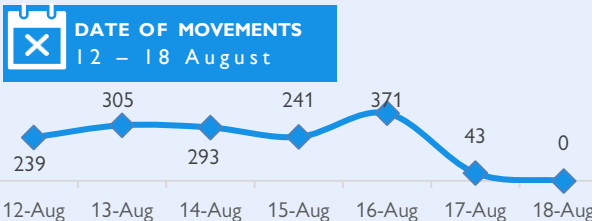
METHODOLOGY

The DTM Emergency Tracking Tool (ETT) is deployed to track and collect information on large and sudden population movements, provide frequent updates on the scale of displacement and quantify the affected population when needed. As a sub-component of the mobility tracking methodology in Nigeria, ETT utilizes direct observations and a broad network of key informants to capture the best estimates of the affected population per location, enabling targeted humanitarian response planning.

LIMITATIONS

The ETT figures reported are not cumulative of all the affected persons thus far but rather provide a snapshot of the current displacement situation on the date indicated. The data and information reported on this dashboard are related solely to the movements caused by the triggers on page two between 12 – 18 August.

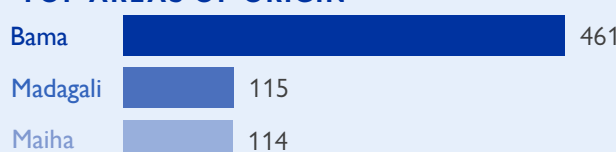
DISPLACEMENT EVOLUTION



TOP REPORTED NEEDS*



TOP AREAS OF ORIGIN



ALERT SUMMARY

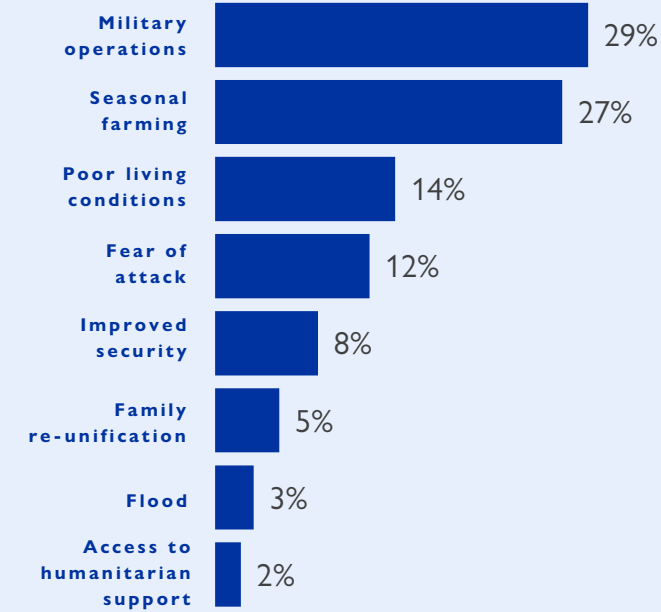
Between 12 and 18 August 2024, a total of 1,492 new arrivals were recorded at locations in Adamawa and Borno states. The new arrivals were recorded at locations in Askira/Uba, Bama, Biu, Gubio, Gwoza, Kala Balge, Mafa and Ngala local government areas (LGAs) of the most conflict-affected Borno State, and in Fufore, Girei, Gombi, Guyuk, Hong, Jada, Lamurde, Madagali, Michika, Mubi South, Numan, Song, Yola North and Yola South LGAs of Adamawa State.

ETT assessments identified the following movement triggers: military operations (440 individuals or 29%), seasonal farming (398 individuals or 27%), poor living conditions (218 individuals or 15%), fear of attack (174 individuals or 12%), improved security (123 individuals or 8%), family re-unification (75 individuals or 5%), flood (41 individuals or 3%) and access to humanitarian support (23 individuals or 2%).

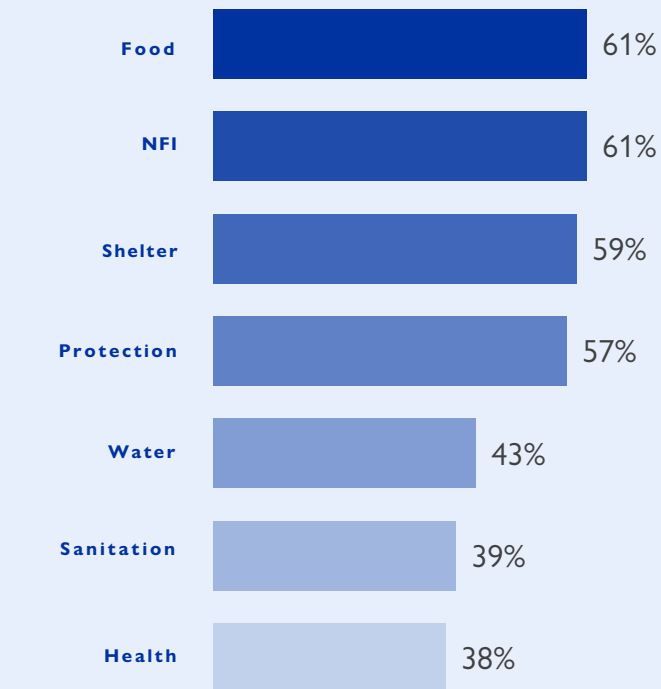
This map is for illustration purposes only. Names and boundaries on this map do not imply official endorsement or acceptance by IOM.

*Multiple-choice response

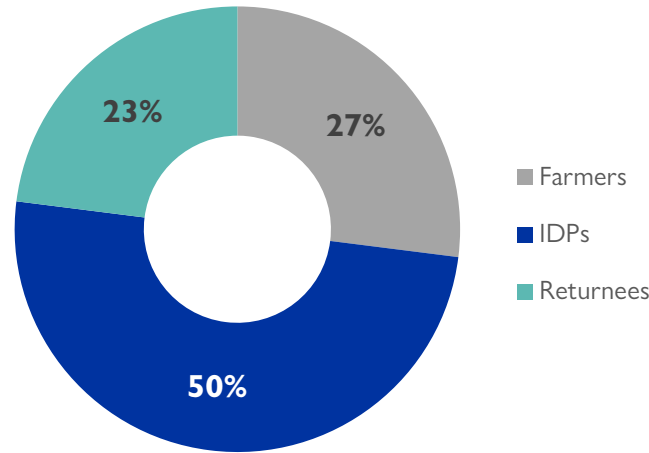
PERCENTAGE OF INDIVIDUALS BY MOVEMENT TRIGGER



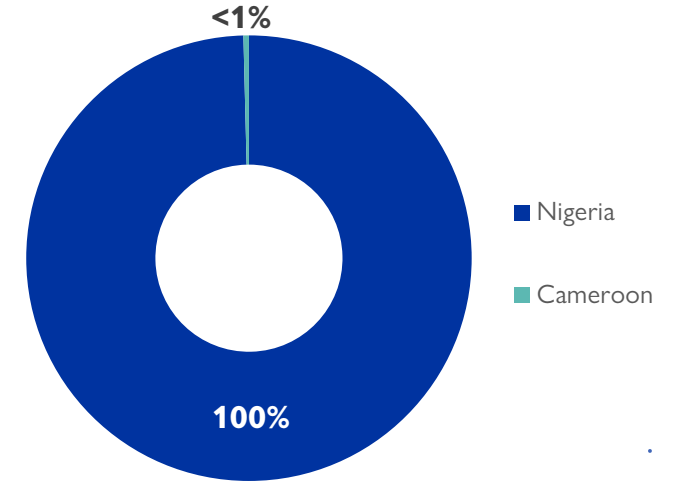
NEEDS EVOLUTION*



ARRIVING POPULATION



COUNTRY OF DEPARTURE OF THE POPULATION



NEW ARRIVALS SCREENING BY NUTRITION PARTNERS



165 MUAC

Green: 102

Yellow: 32

Red: 31

Children (6 – 59 months)
Screened for malnutrition.
Category of screened children.

MALNUTRITION SCREENING SUMMARY OF THE NEW ARRIVALS (CHILDREN 6 – 59 MONTHS)

Between 12 and 18 August 2024, an exhaustive nutrition screening using Mid-Upper Arm Circumference (MUAC) and oedema for acute malnutrition was conducted by sector partners for 165 children aged 6-59 months. Of the 165 children screened, the MUAC reading indicated that 31 were recorded in the red category, 32 in the yellow category and 102 in the green category. No case of oedema was reported in the six LGAs assessed.

Among the 165 children screened, 21 arrived from neighbouring countries (19 in Mobbar LGA and 2 in Kala Balge LGA); of all the 21 children measured; 19 were in green, two were in yellow and none in the red category. All children found with acute malnutrition have been admitted to the treatment programme.

LGA	MUAC Categories						Total
	Green ($\geq 12.5\text{cm}$)		Yellow (11.5cm – 12.5cm)		Red ($< 11.5\text{cm}$)		
	Inaccessible	Accessible	Inaccessible	Accessible	Inaccessible	Accessible	
Bama	68	0	24	0	28	0	120
Gwoza	2	4	1	0	2	0	9
Kala Balge	0	2	0	0	0	0	2
Mafa	0	1	0	0	0	0	1
Mobbar	0	17	0	2	0	0	19
Ngala	8	0	5	0	1	0	14
Total	78	24	30	2	31	0	165

Please note, the data presented above are not surveillance results and should be interpreted with caution.

■ Nourished

■ Moderate Acute Malnutrition (MAM)

■ Severe Acute Malnutrition (SAM)

*Multiple-choice response

DISPLACEMENT BREAKDOWN – only the movements with 14 persons and above are listed below.

State	Arrival location		Movement location			Number of individuals
	LGA	Ward	State	LGA	Ward	
Adamawa	Fufore	Beti	Adamawa	Yola South	Adarawo	46
		Pariya		Girei	Girei I	31
		Ribadu		Maiha	Konkol	19
	Girei	Gereng	Adamawa	Madagali	Gulak	20
		Girei I		Michika	Michika I	29
	Gombi	Gombi South	Adamawa	Madagali	Hyambula	38
		Guyaku		Song	Song Gari	20
		Tawa		Mubi North	Lokuwa	20
	Guyuk	Guyuk	Adamawa	Maiha	Maiha Gari	19
		Daksiri		Guyuk	Chikila	33
	Hong	Garaha	Adamawa	Maiha	Sorau 'A'	51
		Hildi		Hong	Hong	41
		Jada I		Shangui	39	
	Jada	Jada I	Adamawa	Michika	Bazza Margi	18
		Jada li		Mayo–Belwa	Binyeri	15
		Koma li		Yola North	Nassarawo	14
	Lamurde	Lafiya	Adamawa	Fufore	Pariya	16
		Hyambula	Gombe	Lamurde	Waduku	28
	Madagali	Wagga	Adamawa	Kaltungo	Ture I	44
		Minkisi/Wuro Ngiki	Borno	Fufore	Pariya	18
	Michika	Moda/Dlaka/Ghenjuwa	Adamawa	Gwoza	Dure/Wala/Warabe	22
		Lamorde	Adamawa	Gombi	Gombi North	48
	Mubi South	Mugulbu/Yadafa	Yobe	Hong	Hushere Zum	21
		Nassarawo	Adamawa	Madagali	Madagali	34
		Dumne	Adamawa	Potiskum	Dogo Nini	14
	Song	Zumo	Adamawa	Madagali	Hyambula	23
		Jambutu		Gombi	Gombi South	23
	Yola North	Adarawo	Taraba	Maiha	Mayo Nguli	25
	Yola South	Askira Esat	Adamawa	Wukari	Puje	18
	Borno	Askira/Uba	Chul/Rumirgo	Adamawa	Fufore	Gurin
Buduwa/Bula Chirabe			Borno	Yola South	Ngurore	25
Bama		Shehuri/Hausari/Mairi	Borno	Askira/Uba	Kopa/Multhafu	18
		Biu	Borno	Bama	Mussa	25
		Gwoza	Borno	Bama	Andara/Ajiri/Wulba	196
		Ngala	Borno	Bama	Dipchari/Jere/Dar-Jamal/Kotembe	43
					Mbuliya/Goniri/Siraja	57
					Yabiri Kura/Yabiri Gana/Chongolo	38
					Buratai	25
					Shehuri/Hausari/Mairi	20
				Kirenowa	38	