

 **11,384** Individuals Affected
 **24** Affected Locations
 **1,236** Damaged Shelters
 **58** Casualties
 Movement Trigger:   

Event Overview

Between 12 and 18 August 2024, windstorms and floods occurred in the communities of Katoge and Katsalle in Batsari ward and Wagini in Wagini ward of Batsari LGA, Baure in Baure ward and Tumfushi in Garki ward of Baure LGA, Sabon Garin Kigo in Yamel A ward of Dutsi LGA, Natsinta in Kusa ward, Koki in Mazanya/Magama ward and Riko in Riko ward of Jibia LGA, Matsai in Matsai ward of Kaita LGA, Unguwar Marusa in Kangiwa ward, Gafai and Kofar Yandaka in Wakilin Arewa B, Abuja Quarters, Lambobi, Dutse Safe and Galadanci in Wakilin Yamma II of Katsina LGA, Gidan Mutum daya in Yashe B of Kusada LGA, Dissi Gari in Dissi ward of Matazu LGA, Abukur in Abukur ward of Rimi LGA and Karkarku, Unguwar Gamji, Lemu and Rade in Rade A of Sandamu LGA. The windstorm and floods affected 9,170 individuals in 1,247 households and 1,236 shelters. The affected individuals were displaced to neighbouring shelters in the communities. The affected individuals included 6,148 children, 1,680 women and 1,342 men.

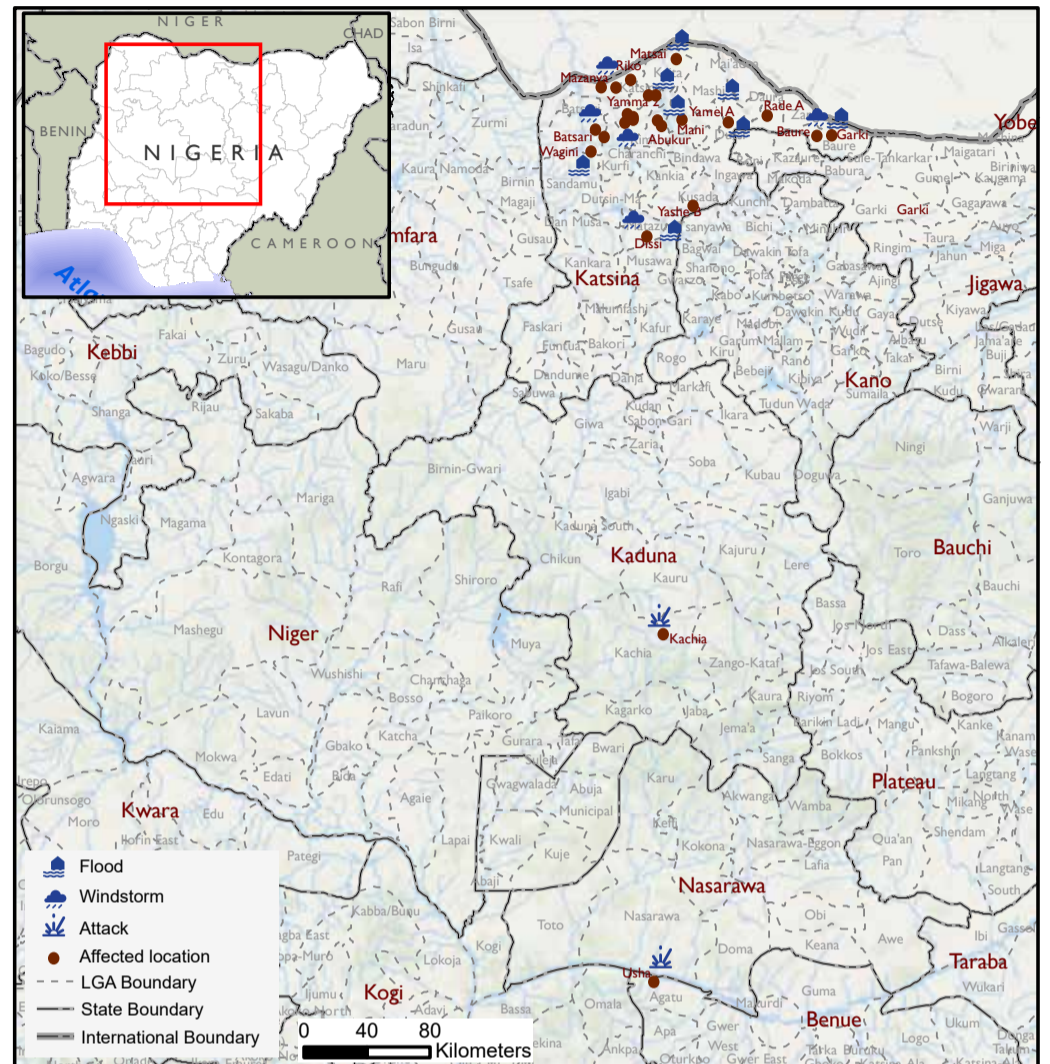
On 18 August 2024, farmer-herder clashes occurred in the community of Iwari and caused panic in the neighbouring communities of Ogbahi, London and Okpancheni in Usha ward of Agatu local government area (LGA) in Benue State. There were reports of one injury and two fatalities. The farmer-herders clashes affected 2,200 individuals in 350 households. The affected individuals included 1,100 children, 575 women and 525 men.

On 18 August 2024, armed bandits attacked the community of Angwan Ate in Kachia Urban ward of Kachia LGA in Kaduna State. The attacks affected 14 individuals in 4 households, the affected individuals included eight children, five women and a man.

Of all the needs identified, shelter and food were the most prevalent. Other needs included non-food items (NFI), security and psychosocial support.

Following these events, DTM (Displacement Tracking Matrix) field staff conducted rapid assessments to inform the humanitarian community and Government/partners, and to enable a targeted response.

Nigeria's north-central and north-west zones are afflicted with a multi-dimensional crisis. Long-standing tensions between ethnic and religious groups often result in attacks and banditry or hirabah. These attacks involve kidnapping and grand larceny along major highways by criminal groups. During the past years, the crisis accelerated and has resulted in widespread displacement across the north-central and north-west regions.



Map 1. Showing locations affected.

This map is for illustration purposes only. The boundaries and names shown, and the designations used on this map do not imply official endorsement or acceptance by the International Organization for Migration.

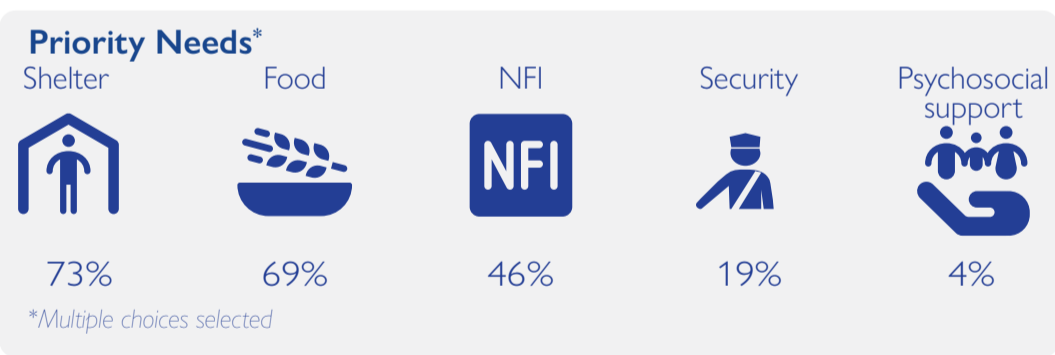


Fig. 2. Most needed assistance

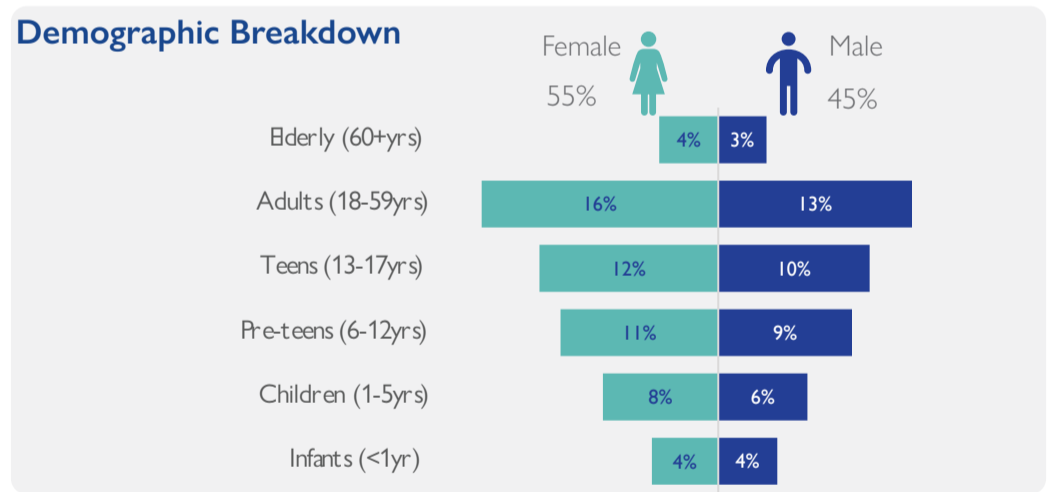


Fig. 3. Gender breakdown of affected population

State	LGA	Ward	Incident type	Number of Affected Household	Number of Affected Individuals			Casualty	Number of Partially Damaged Shelters	Number of fully Damaged Shelters
					Male	Female	Total			
Benue	Agatu	Usha	Attacks	350	1,050	1,150	2,200	3	0	0
	Matazu	Dissi	Flood	150	365	486	851	4	107	31
Katsina	Katsina	Wakilin Arewa (B)	Flood	223	730	842	1,572	14	108	135
		Wakilin Yamma II	Windstorm	111	361	400	761	0	74	37
	Batsari	Kangiwa	Windstorm	29	96	111	207	0	20	9
		Batsari	Windstorm	72	256	324	580	4	21	51
	Mani	Wagini	Flood	105	402	446	848	3	28	77
		Mani	Flood	10	39	45	84	0	8	2
	Rimi	Abukur	Windstorm And Flood	17	62	63	125	0	0	15
	Kaita	Matsai	Flood	74	273	325	598	12	49	18
	Dutsi	Yamel A	Flood	5	13	19	32	0	3	2
		Riko	Windstorm	21	51	117	168	0	19	2
	Jibia	Mazanya/Magama	Windstorm	15	49	71	120	0	0	15
		Kusa	Windstorm	201	720	888	1,608	18	178	23
	Baure	Baure	Windstorm	30	92	122	214	0	19	11
		Garki	Flood	21	67	110	177	0	21	0
Kusada	Yashe 'B'	Windstorm	25	69	106	175	0	8	7	
	Rade 'A'	Flood	138	462	588	1,050	0	90	48	
Kaduna	Kachia	Kachia Urban	Attacks	4	5	9	14	0	0	
Total				1,601	5,162	6,222	11,384	58	753	483

Methodology: Crises and emergencies require the humanitarian community to act urgently. As a subcomponent of DTM's mobility tracking, flash reports utilise direct observation and a broad network of key informants to monitor sudden displacement resulting from events like natural disasters or attacks and collect information on the number, profile, and immediate needs of affected populations. In the initial 24 - 48 hours after an incident, DTM Nigeria activates a rapid assessment to document the event, urgent needs of affected individuals, demographic information, and impact. If displacement occurs, DTM Nigeria issues an Early Warning Flash/Incident report within 72 hours, notifying partners and stakeholders.

Disclaimer: The opinions expressed in the report are those of the authors and do not necessarily reflect the views of the International Organization for Migration (IOM). The designations employed and the presentation of material throughout the report do not imply the expression of any opinion whatsoever on the part of IOM concerning the legal status of any country, territory, city or area, or its authorities, or concerning its frontiers or boundaries.

When quoting, paraphrasing, or in any other way using the information mentioned in this report, the source needs to be stated appropriately as follows: "Source: Displacement Tracking Matrix (DTM) of the International Organization for Migration (IOM), August 2024."

