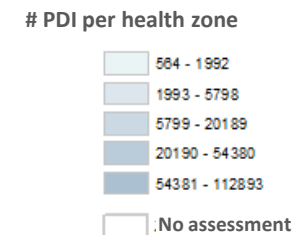


This dashboard contains the main findings obtained through the first round of DTM assessments that were conducted in the villages of the Kasai province. Data was collected from the 1st of April till the 20th of April 2018 within **214** health areas (aires de santé) and 12 health zones. A total of **1 731** villages have been evaluated through **3,333** key informants' interviews by IOM's local partner Travail et Droits de l'Homme (TDH).

Forced displacement in Kasai



362 301



IDPs*

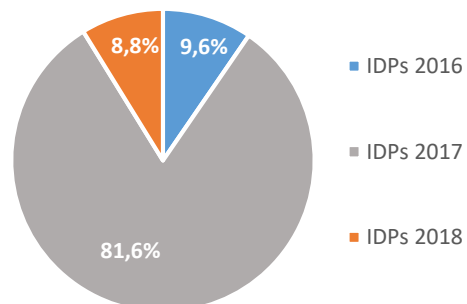
563 474



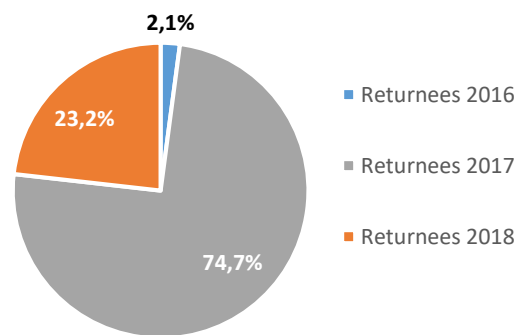
Returnees*

* Estimations

Displacement Period



Return Period



Year of displacement*	# Displaced individuals	# Returnees
2018	31 908	130 790
2017	295 662	420 841
2016	34 731	11 843

1 731



Villages assessed

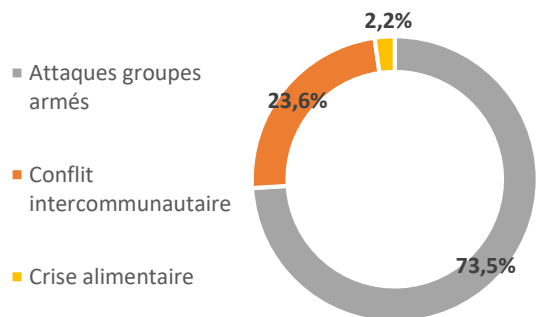
3 333



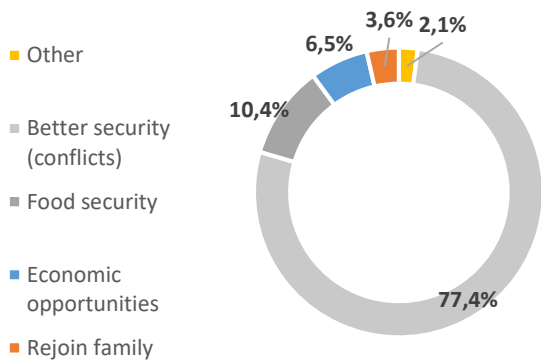
Key informants

Base Map Source: ESRI. This map is for illustration purposes only. The depiction and use of boundaries, geographic names, and related data shown on maps and included in this report are not warranted to be free of error nor do they imply judgment on the legal status of any territory, or any endorsement or acceptance of such boundaries by IOM.

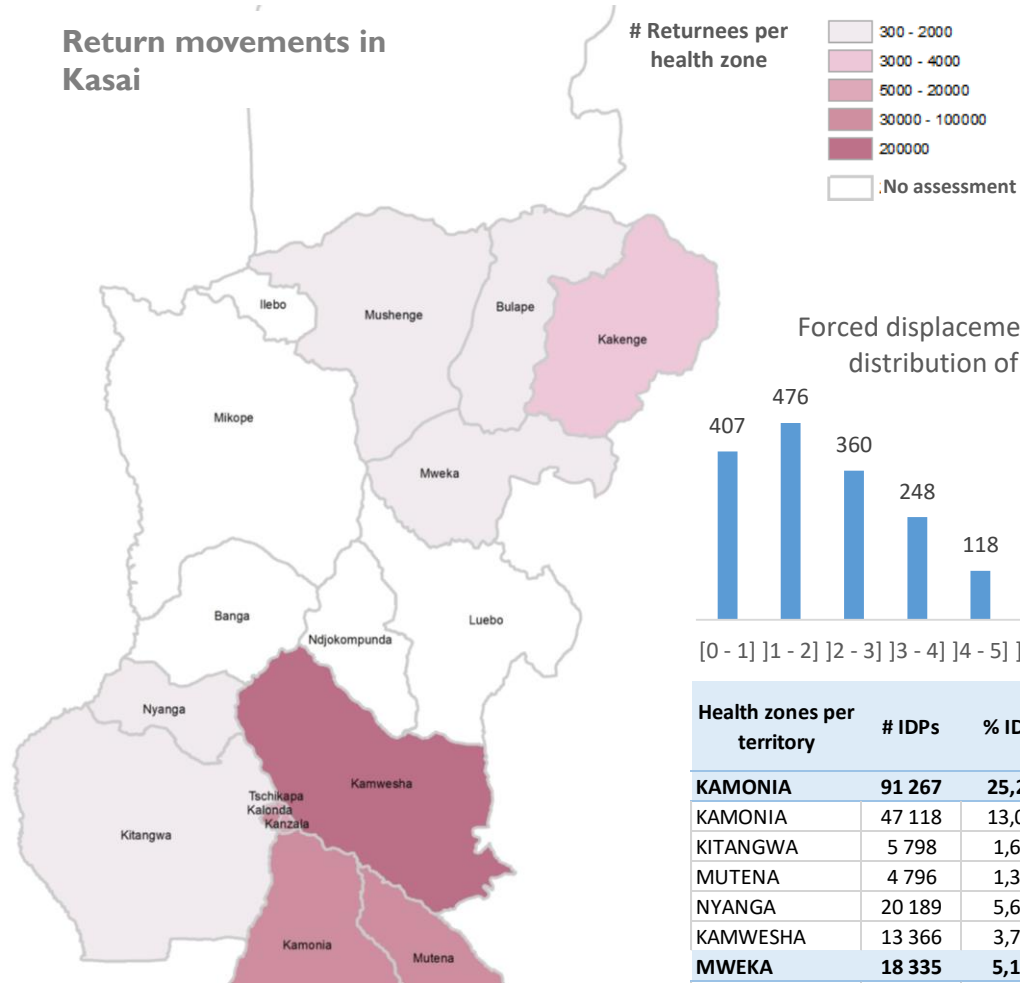
Reasons for displacement



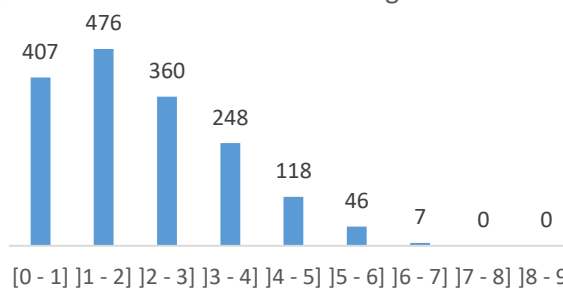
Reasons for return



Return movements in Kasai



Forced displacement pressure: distribution of villages



Displacement pressure indicator in health areas and villages

This indicator rates the villages from 1 to 10, 1 being the villages in the less critical situation, 10 the villages in the most critical one. This specific methodology combines, on one hand, demographic data (rate of IDP and returnee population per health area, corresponding health zone population density, presence of both IDPs and returnees in the same village) and on the other hand, the data related to access to health infrastructures, level of destruction of the village and priority needs (water, food and health) per village*.

* Details on the calculation methodology are available upon request

DTM methodology: This population mobility tracking project aims to collect quantitative data on displaced and returned population in Kasai, and on their origin and displacement period. These informations are collected among key informant networks in each village of the province. These results will provide a better understanding of the displacement dynamics in DRC and support the humanitarian response.

Health zones per territory	# IDPs	% IDPs	# Returnees	% Returnees	Displacement pressure (Mean)	# Villages DPS list	# Villages assessed	Coverage rate
KAMONIA	91 267	25,2%	432 132	76,7%	2,3	977	766	78,4%
KAMONIA	47 118	13,0%	107 954	19,2%	3,1	228	160	70,2%
KITANGWA	5 798	1,6%	601	0,1%	0,9	99	103	104,0%
MUTENA	4 796	1,3%	126 239	22,4%	2,6	101	59	58,4%
NYANGA	20 189	5,6%	347	0,1%	1,5	172	162	94,2%
KAMWESHA	13 366	3,7%	196 991	35,0%	2,9	377	282	74,8%
MWEKA	18 335	5,1%	7 461	1,3%	0,8	532	392	73,7%
BULAPE	564	0,2%	1 118	0,2%	0,6	133	77	57,9%
KAKENGE	1 992	0,5%	4 273	0,8%	0,9	136	92	67,6%
MUSHENGE	1 416	0,4%	557	0,1%	0,7	156	121	77,6%
MWEKA	14 363	4,0%	1 513	0,3%	1,1	107	102	95,3%
TSHIKAPA	252 699	69,7%	123 881	22,0%	2,7	647	573	88,6%
KANZALA	85 426	23,6%	23 233	4,1%	2,7	93	83	89,2%
KALONDA	112 893	31,2%	85 405	15,2%	3,1	372	323	86,8%
TSCHIKAPA	54 380	15,0%	15 243	2,7%	1,9	182	167	91,8%
Total	362 301	100%	563 474	100%	2,1	2156	1731	80,3%