

EMERGENCY TRACKING TOOL (ETT)

DTM Emergency Tracking Tool (ETT) is deployed to track and provide up-to-date information on sudden displacement and other population movements

ETT Report: No. 102 | 14 - 20 January 2019

Movements

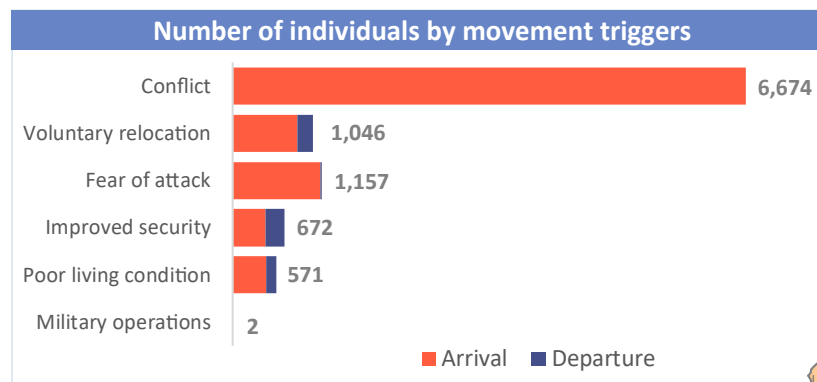


New Arrival Screening by Nutrition Partners

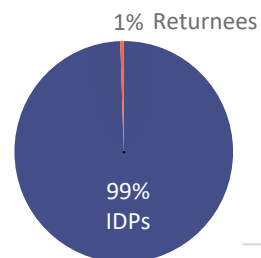


Within the period of 14-20 January 2019, a total of 10,122 movements were recorded, including 9,534 arrivals and 588 departures. Arrivals were recorded at locations in Askira Uba, Bama, Chibok, Damboa, Dikwa, Gwoza, Jere, Konduga, Mafa, Magumeri, Maiduguri, Mobbar, Monguno and Ngala Local Government Areas (LGAs) of Borno state and locations in Demsa, Fufore, Girei, Gombi, Guyuk, Hong, Lamurde, Madagali, Maiha, Mayo Belwa, Michika, Mubi North, Mubi South, Numan, Song, Yola North and Yola South LGAs of Adamawa state. Departures were recorded at Askira Uba LGA of Borno state and Demsa, Fufore, Girei, Gombi, Hong, Lamurde, Madagali, Maiha, Mayo Belwa, Mubi North, Mubi South, Numan, Song, Yola North and Yola South LGA of Adamawa state.

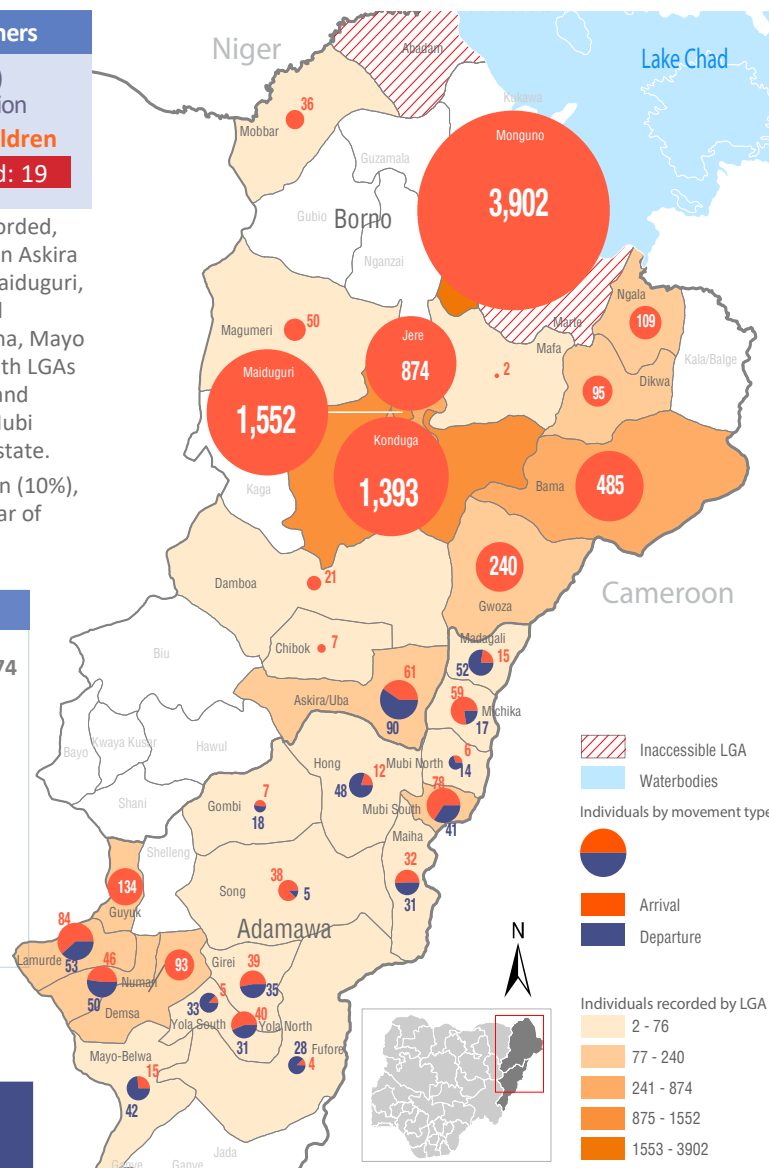
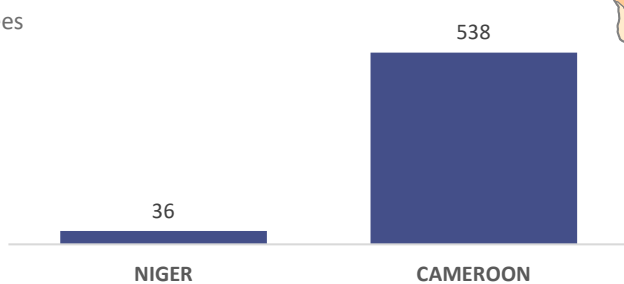
ETT assessments identified the following movement triggers: voluntary relocation (10%), improved security (7%), ongoing conflict (66%), poor living conditions (6%) and fear of attacks (11%)



Affected population



Arrivals from Neighbouring Countries



Summary of major movements

Monguno: 3,902 arrivals were recorded in Monguno LGA of Borno state. The arrivals were all from Baga ward of Kukawa LGA. The new arrivals reported to have relocated due to the ongoing conflict.

Maiduguri: 1,552 arrivals and 4 departures were recorded in Maiduguri Metropolitan Council (MMC) of Borno state. These include 689 arrivals from Monguno ward of Monguno LGA, 76 arrivals from Arge ward of Abadam LGA, 148 arrivals from Baga ward, 59 arrivals from Cross Kauwa ward and 266 arrivals from Doro ward of Kukawa LGA, 38 arrivals from Kayamla ward, 33 arrivals from Sojiri ward and 51 arrivals from Balle ward of Konduga LGA and 192 arrivals from Damasak ward of Mobbar LGA. 52% of the new arrivals reported to have relocated due to fear of being attacked while 48% was due to the ongoing conflict.

Konduga: 1,393 arrivals were recorded in Konduga LGA of Borno state. These include 1,111 arrivals from Baga ward and 218 arrivals from Doro ward of Kukawa LGA, 30 arrivals from Buduwa ward and 22 arrivals from Gulumba ward of Bama LGA and 12 arrivals from Kayamla ward of Konduga tracked at Dalori ward of Konduga LGA of Borno state. 95% of the new arrivals reported to have relocated due to the ongoing conflict, 3% voluntarily relocated while 2% relocated due to poor living condition.

Jere: 874 arrivals were recorded in Jere LGA of Borno state. These include 370 arrivals from Adamti 1 ward, 125 arrivals from Baga ward and 258 arrivals from Doro ward of Kukawa LGA, 114 arrivals from Monguno ward of Monguno LGA and 7 arrivals from Abari ward of Guzamala LGA of Borno State. The new arrivals reported to have relocated due to the ongoing conflict.

New Arrival Malnutrition Screening Summary (children 6-59 months)

An exhaustive nutrition screening using mid-upper arm circumference (MUAC) and Oedema for acute malnutrition was conducted by Sector partners for 462 children of 6-59 months. Of the 462 children screened, the MUAC reading was: 19 children (2 from inaccessible and 17 from accessible area) were in the Red category, 20 were in the Yellow category and 423 were measured in the Green category. No case of Oedema was reported in the 5 LGAs that sent in reports.

The results also include 139 children from a neighbouring LGA (The were all from Bama): of all the 139 children measured, 12 were in red category, 122 were in the green category and 5 in the yellow category. All children found with severe acute malnutrition have been admitted for treatment. Please note, the data presented are not surveillance results and should be interpreted with caution.

LGA	MUAC Categories						Total
	Green ($\geq 12.5\text{cm}$)		Yellow (11.5 cm - 12.5cm)		Red ($< 11.5\text{cm}$)		
	In-Accessible	Accessible	In-Accessible	Accessible	In-Accessible	Accessible	
Bama	3	119	1	4	0	12	139
Gwoza	13	54	2	2	2	0	73
Maiduguri	0	95	0	4	0	0	99
Konduga	0	113	0	4	0	5	122
Ngala	0	26	0	3	0	0	29
Total	16	407	3	17	2	17	462

■ Nourished

■ Moderate Acute Malnutrition (MAM)

■ Severe Acute Malnutrition (SAM)

Table 1. Details of movements by locations of assessment and locations of arrival/departure - only movements with at least 28 persons are listed below

Tracking location			Movement location				
STATE	LGA	WARD	STATE	LGA	WARD	ARRIVAL	DEPARTURE
ADAMAWA	GUYUK	DUMNA	ADAMAWA	LAMURDE	GYAWANA	43	-
		GYAWANA		GUYUK	DUMNA		43
	LAMURDE	LAFIYA	ADAMAWA	NUMAN	INBURUM	29	
	MAYO BELWA	MAYO BELWA	ADAMAWA	MAYO BELWA	MAYO BELWA	9	29
	MUBI SOUTH	GUDE	BORNO	BAMA	ABARAM	36	
			GWOZA	WAKANE			31
BORNO	ASKIRA/UBA	DILLE	BORNO	ASKIRA UBA	KOPA/MUTHFU	-	49
			TARABA	LAU	KUNANI	44	-
	BAMA	BUDUWA	CAMEROON		KOLOFATA	382	-
				MARWA	MOKOLO	69	-
			OGUN	ABEOKUTA	ABEOKUTA	28	-
	DIKWA	DIKWA CENTRAL	LAGOS	IKEJA	IKEJA	41	-
		BULABULIN/WAKANE	ADAMAWA	HONG	SHASHAW	36	-
				BAMA	DARAJAMAL	41	-
	GWOZA	PULKA/BOKKO	BORNO	KUKAWA	BAGA	33	-
			TARABA	JALIGO	JALINGO	56	-
					ADAMTI 1	370	-
					BAGA	125	-
	JERE	OLD MAIDUGURI	BORNO	KUKAWA	DORO	258	-
				MONGUNO	MONGUNO	114	-
		AUNO/CHABBOL			BAGA	240	-
				KUKAWA	DORO	218	-
	KONDUGA	DALORI	BORNO	BAMA	BUDUWA	30	-
				KUKAWA	BAGA	871	-
					BAGA	135	-
					DORO	266	-
		BOLORI		KUKAWA	CROSS KAUWA	59	-
				ABADAM	ARGE	76	-
		MAFONI		MOBBAR	DAMASAK	192	-
				BALLE	51	-	
				KAYAMLA	38	-	
			KONDUGA	SOJIRI	33	-	
MAIDUGURI	MAISANDARI	BORNO	MONGUNO	MONGUNO	689	-	
MOBBAR	DAMASAK CENTRAL	NIGER	DIFFA	SHETTIMARI	36	-	
		BORNO		BAGA	3,715	-	
MONGUNO	MONGUNO		KUKAWA	KAUWA	187	-	
		BORNO	JERE	DUSUMAN	60	-	
NGALA	NGALA	CAMEROON	MARWA	KUSSURI	49	-	

The depiction and use of boundaries, geographic names, and related data shown on maps and included in this report are not warranted to be error free nor do they imply judgment on the legal status of any territory, or any endorsement or acceptance of such boundaries by IOM.

For more information or to report an alert, please contact:

Henry Kwenin, DTM Project Coordinator: hkwenin@iom.int | +234 9038852524 Bercasio Dave, Emergency Coordinator: dbercasio@iom.int | +234 9075070001 DTM information products: <http://nigeria.iom.int/dtm>