



Event Overview

On 06, 08 and 11 August 2024, communal clashes occurred in the community of Bonta in Mbagusa/Mbatser ward of Konshisha local government area (LGA) and farmer-herder clashes occurred in the communities of Ayati in Borkiyo ward and Tse Kusugh in Mbazun ward of Ukum LGA, and the community of Egwuma in Ogwule-Kaduna of Agatu LGA, all in Benue State. There were reports of 244 injuries and 83 fatalities. The communal clash affected 210 individuals in 42 households and the farmer-herder clashes affected 1,126 individuals in 316 households. The affected individuals included 499 children, 402 women and 369 men.

On 10 and 11 August 2024, floods occurred in the communities of Ungwan Gabas and Ungwan Nassarawa in Kachia Urban ward of Kachia LGA. The floods affected 88 individuals in 12 households and displaced 36 individuals to Kachia in Kachia Urban ward in Kachia LGA. And armed bandits attacked the communities of Gefe in Kallah ward, Anguwan Luka in Afogo ward, Bauda in Maro ward and Libere in Kajuru ward of Kajuru LGA of Kaduna State. There was a report of three injuries and four fatalities as a result of the attacks. The attacks affected 1,177 individuals in 212 households and displaced 1,056 individuals to the communities of Sabon Garin Kufana in Kufana ward, Station in Maro ward and Rimau in Rimau ward all in Kajuru LGA and 37 individuals were abducted. The affected individuals included 704 children, 296 women and 265 men.

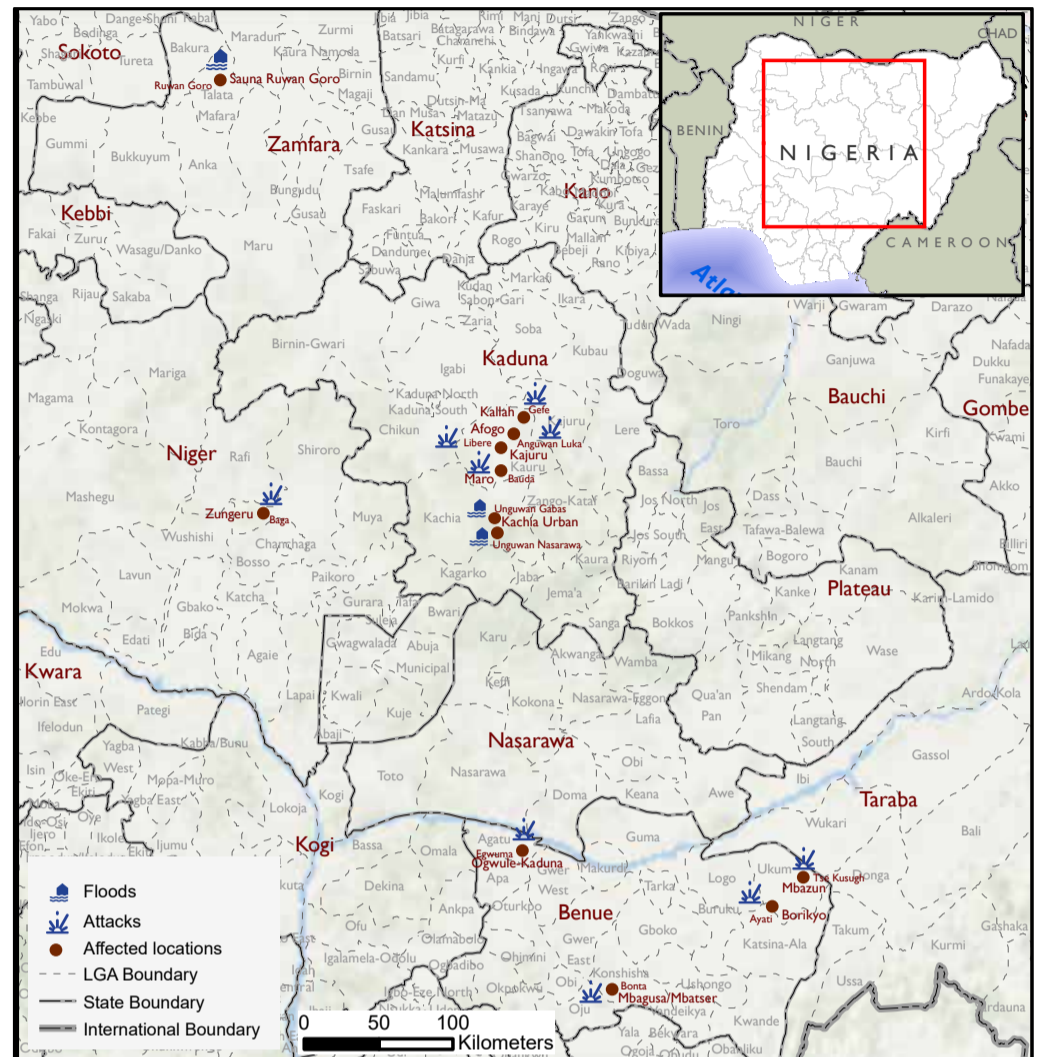
On 07 August 2024, armed bandits attacked the community of Baga in Zungeru ward of Wushishi LGA in Niger State. The attack affected 300 individuals in 50 households and displaced them to the communities of Dako II, Sabon Kasuwa and Gadan Tulu in Zungeru ward. The affected individuals included 237 children, 43 women and 20 men.

On 08 August 2024, floods occurred in Ruwan Goro community in Sauna Ruwan Goro ward of Talata Mafara LGA in Zamfara State. The flood affected 702 individuals in 113 households. The affected individuals included 395 children, 169 women and 138 men.

Of all the needs identified, food, non-food items (NFI) and shelter were the most prevalent. Other needs included security, psychosocial support, transport, health and WASH.

Following these events, DTM (Displacement Tracking Matrix) field staff conducted rapid assessments to inform the humanitarian community and Government/partners, and to enable a targeted response.

Nigeria's north-central and north-west zones are afflicted with a multi-dimensional crisis. Long-standing tensions between ethnic and religious groups often result in attacks and banditry or hirabah. These attacks involve kidnapping and grand larceny along major highways by criminal groups. During the past years, the crisis accelerated and has resulted in widespread displacement across the north-central and north-west regions.



Map 1. Showing locations affected. This map is for illustration purposes only. The boundaries and names shown, and the designations used on this map do not imply official endorsement or acceptance by the International Organization for Migration.



Fig. 2. Most needed assistance

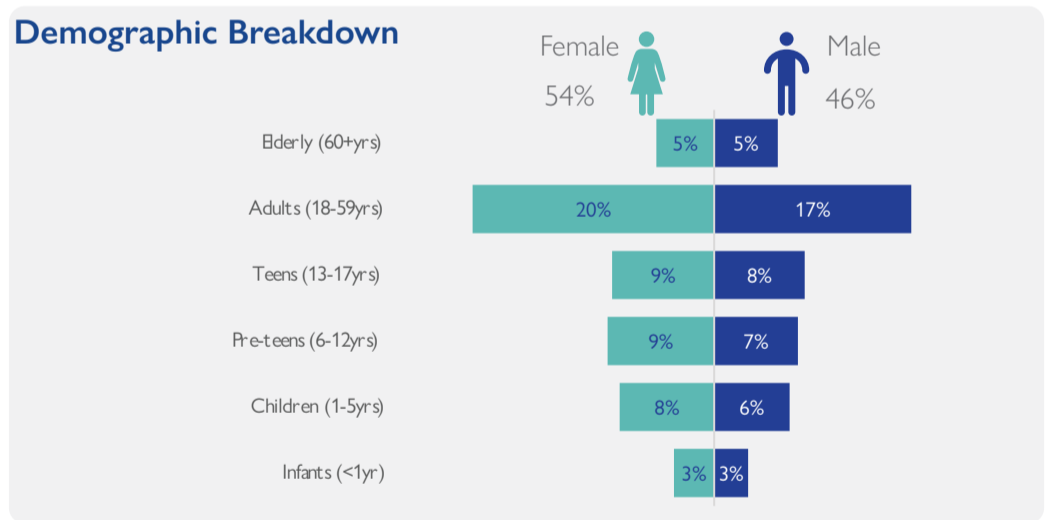


Fig. 3. Gender breakdown of the affected population

State	LGA	Ward	Incident type	Number of Affected Household	Number of Affected Individuals			Casualty	Number of Partially Damaged Shelters	Number of fully Damaged Shelters
					Male	Female	Total			
Benue	Ukum	Borkiyo	Attacks	200	262	326	588	246	138	43
		Mbazun	Attacks	64	124	173	297	72	0	100
	Konshisha	Mbagusa/Mbatser	Communal clashes	42	139	71	210	7	3	39
	Agatu	Ogwule-Kaduna	Attacks	52	104	137	241	2	5	21
Kaduna	Kajuru	Kallah	Attacks	25	53	68	121	4	4	0
		Afogo	Attacks	92	262	288	550	0	0	0
		Maro	Attacks	34	99	102	201	2	0	0
		Kajuru	Attacks	61	138	167	305	1	0	0
	Kachia	Gumel	Floods	12	39	49	88	0	0	0
Niger	Wushishi	Zungeru	Attacks	50	120	180	300	51	50	0
Zamfara	Talata Mafara	Sauna R/Gora	Floods	113	313	389	702	0	28	59
Total				745	1,653	1,950	3,603	385	228	262

Methodology: Crises and emergencies require the humanitarian community to act urgently. As a subcomponent of DTM's mobility tracking, flash reports utilise direct observation and a broad network of key informants to monitor sudden displacement resulting from events like natural disasters or attacks and collect information on the number, profile, and immediate needs of affected populations. In the initial 24 - 48 hours after an incident, DTM Nigeria activates a rapid assessment to document the event, urgent needs of affected individuals, demographic information, and impact. If displacement occurs, DTM Nigeria issues an Early Warning Flash/Incident report within 72 hours, notifying partners and stakeholders.

Disclaimer: The opinions expressed in the report are those of the authors and do not necessarily reflect the views of the International Organization for Migration (IOM). The designations employed and the presentation of material throughout the report do not imply the expression of any opinion whatsoever on the part of IOM concerning the legal status of any country, territory, city or area, or its authorities, or concerning its frontiers or boundaries.

When quoting, paraphrasing, or in any other way using the information mentioned in this report, the source needs to be stated appropriately as follows: "Source: Displacement Tracking Matrix (DTM) of the International Organization for Migration (IOM), August 2024."

