

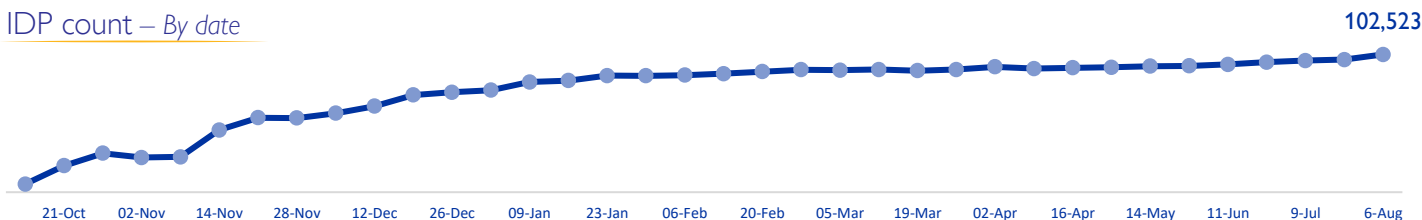
## MOBILITY SNAPSHOT – Round 41

Report Production Date: 08 August 2024 | Data collected up till 4 pm on 06 August 2024

### Overview

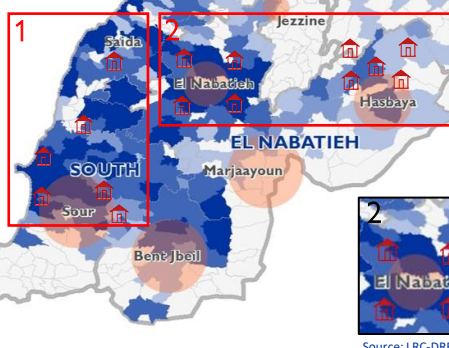
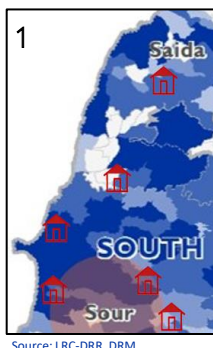
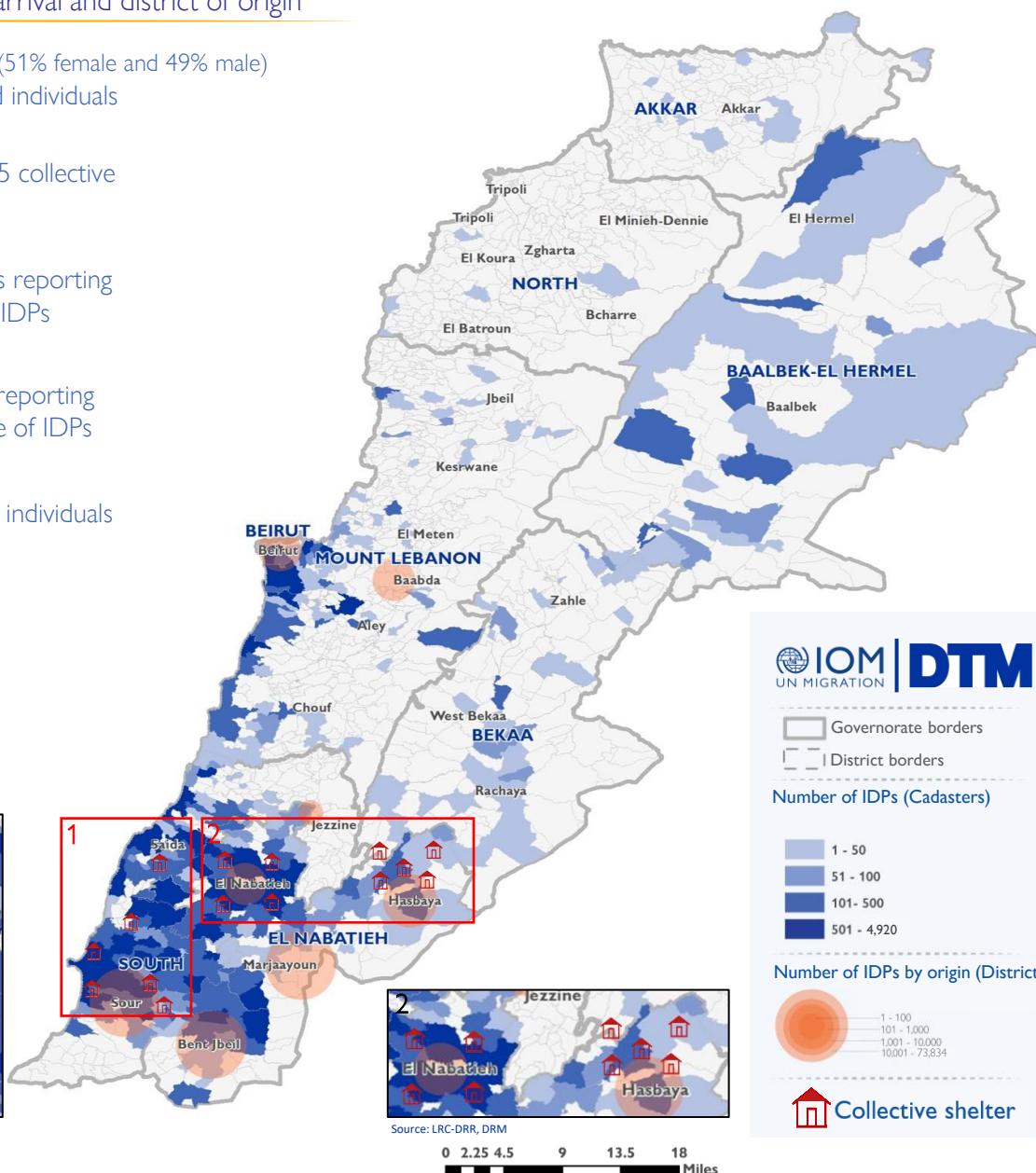
Armed confrontations have been occurring at the Southern Lebanese border since the 8 October 2023. As a consequence, several thousand families from South Lebanon have fled their homes. The International Organization for Migration (IOM) conducts daily monitoring of population movements, with the objective of informing preparedness and response planning. Population numbers for collective shelters have been directly provided from the data collected at the level of the emergency operations rooms, supported by the Lebanese Red Cross, (LRC) and the Disaster Risk Management (DRM) Unit.

### IDP count – By date



### IDPs by cadaster of arrival and district of origin

- 102,523** (51% female and 49% male)  
Displaced individuals
- 1,283**  
IDPs in 15 collective shelters
- 357**  
Cadastrers reporting arrival of IDPs
- 8**  
Districts reporting departure of IDPs
- 210**  
Returnee individuals

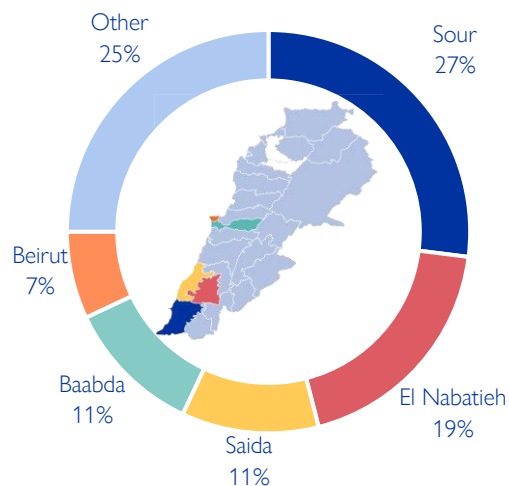


This map is for illustration purposes only. Names and boundaries on this map do not imply official endorsement or acceptance by IOM.

## Displacement within Lebanon – By district of arrival

Governorate	District	# of Cadasters	# of Locations	IDPs
South	Sour	52	63	28,050
El Nabatieh	El Nabatieh	38	38	19,906
South	Saida	45	58	11,619
Mount Lebanon	Baabda	13	21	11,563
Beirut	Beirut	7	12	6,850
Mount Lebanon	Aley	16	28	5,837
El Nabatieh	Bent Jbeil	23	23	5,807
Mount Lebanon	El Meten	23	28	3,674
Mount Lebanon	Chouf	22	36	2,467
El Nabatieh	Marjaayoun	14	14	1,904
Baalbek-El Hermel	Baalbek	24	30	1,776
El Nabatieh	Hasbaya	11	12	814
Mount Lebanon	Jbeil	12	12	569
Bekaa	West Bekaa	6	6	463
Bekaa	Zahle	13	13	272
Bekaa	Rachaya	8	9	246
Baalbek-El Hermel	El Hermel	4	5	228
Mount Lebanon	Kesrwane	5	5	215
Akkar	Akkar	12	13	187
South	Jezzine	4	4	29
North	El Batroun	2	2	26
North	Zgharta	1	1	15
North	El Koura	2	2	6
<b>Total</b>		<b>357</b>	<b>435</b>	<b>102,523</b>

Chart 1: IDPs distribution by district of arrival

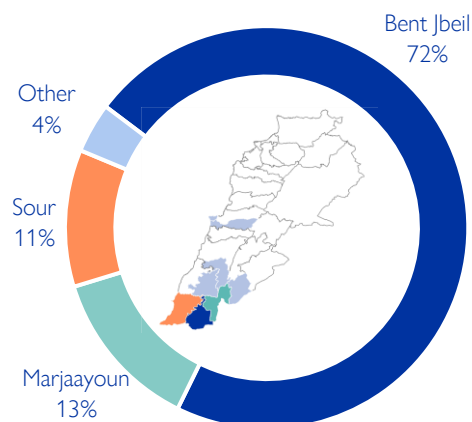


As of 06 August, Lebanon has recorded 102,523 internally displaced persons (IDPs), showing a 4% increase since 23 July. IDPs have sought safety in 435 locations (villages or neighbourhoods) across 357 cadasters throughout Lebanon. Displacement has been observed in 23 out of the 26 districts across all eight governorates. Most of the IDPs (75%) are in five districts out of the total 23 districts hosting IDPs—specifically, Sour, El Nabatieh, Saida, Baabda, and Beirut.

## Displacement within Lebanon – By district of departure

Governorate	District	IDPs
El Nabatieh	Bent Jbeil	73,834
El Nabatieh	Marjaayoun	12,971
South	Sour	11,546
El Nabatieh	Hasbaya	2,718
El Nabatieh	El Nabatieh	677
Mount Lebanon	Baabda	636
Beirut	Beirut	134
South	Jezzine	7
<b>Total</b>		<b>102,523</b>

Chart 2: IDPs distribution by district of departure



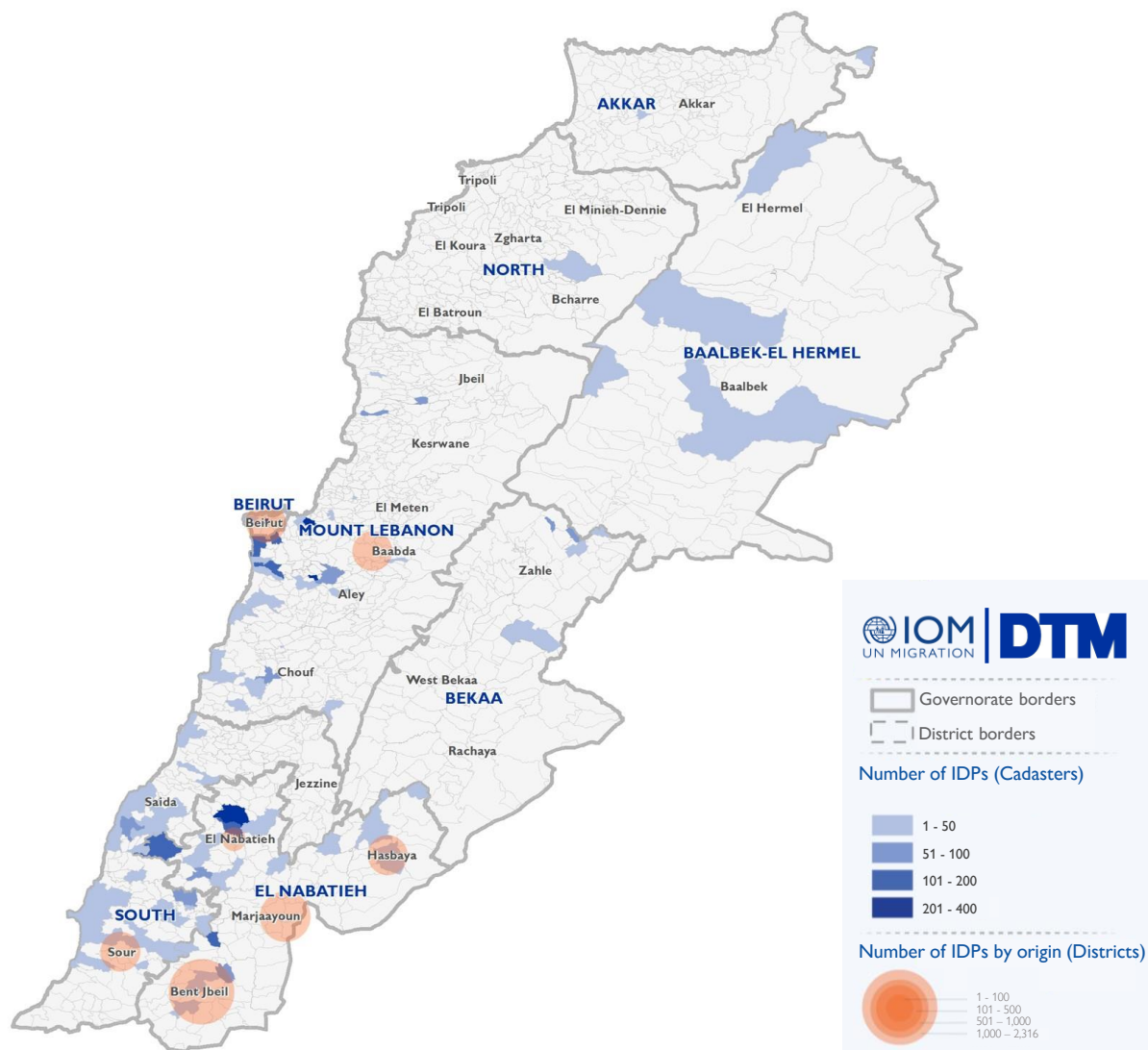
The majority of IDPs (96%) originate from three districts. These three districts span along the Southern border of Lebanon. Specifically, 72% are from Bent Jbeil, 13% are from Marjaayoun, and 11% are from Sour. The remaining 4% originate from five different districts, Hasbaya, El Nabatieh, Baabda, Beirut, and Jezzine.

## Arrivals in the last week – (31 July to 06 August)

Governorate	District	# of Cadasters	# of Locations	IDPs
El Nabatieh	El Nabatieh	11	11	722
Mount Lebanon	Aley	8	11	639
Mount Lebanon	El Meten	4	4	312
South	Sour	17	18	307
South	Saida	18	20	279
Beirut	Beirut	2	2	257
El Nabatieh	Bent Jbeil	6	6	226
Mount Lebanon	Chouf	8	9	203
Mount Lebanon	Baabda	3	6	188
Mount Lebanon	Jbeil	2	2	110
Baalbek-El Hermel	Baalbek	7	8	86
Bekaa	Zahle	4	4	84
El Nabatieh	Hasbaya	3	3	68
Mount Lebanon	Kesrwane	1	1	60
Akkar	Akkar	2	2	57
Baalbek-El Hermel	El Hermel	1	1	25
El Nabatieh	Marjaayoun	2	2	24
North	Zgharta	1	1	10
<b>Total</b>		<b>100</b>	<b>111</b>	<b>3,657</b>

In the past week, 3,657 new displacements have been recorded in 100 cadasters across 18 districts. These individuals might be experiencing displacement for the first time or undergoing secondary movement. These individuals have arrived from Sour, Marjaayoun, Hasbaya, El Nabatieh, Bent Jbeil, Beirut, and Baabda.

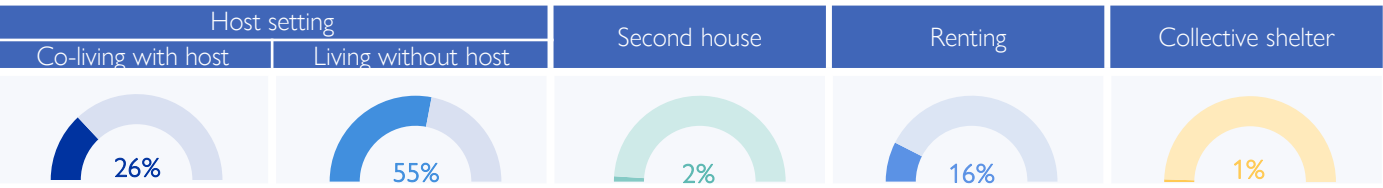
## Newly arrived IDPs by cadaster of arrival and district of origin



This map is for illustration purposes only. Names and boundaries on this map do not imply official endorsement or acceptance by IOM.



# IDPs distribution by shelter type – By Governorate



Around 81% of IDPs are currently living in host settings, while 16% have opted for rental housing. Another 2% have relocated to their secondary residences. Around 1% are housed in 15 collective shelters.

Of the 81% in host settings, 26,289 are co-living with non-internally displaced families, while 56,621 reside separately. Notably, 21% of the 82,910 individuals in host settings are living in overcrowded conditions according to the perception of IOM DTM key informants.

In Sour, there are presently five collective shelters accommodating 866 IDPs; in Hasbaya, there are five collective shelters hosting 105 IDPs; in El Nabatieh there are four collective shelter hosting 82 IDPs; and in Saïda, there is one collective shelter hosting 230 IDPs.

Governorate	Host setting		Second house	Renting	Collective shelter
	Co-living with host	Living without host			
Bekaa	27%	23%	7%	43%	0%
Baalbek-El Hermel	16%	22%	3%	59%	0%
Beirut	55%	13%	17%	15%	0%
El Nabatieh	3%	88%	0%	8%	1%
Mount Lebanon	55%	14%	2%	29%	0%
North	0%	4%	0%	96%	0%
South	19%	67%	0%	11%	3%
Akkar	46%	1%	0%	53%	0%

## Displacement demographics

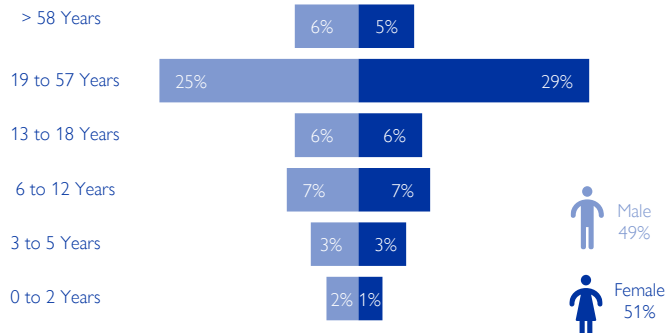


Chart 4: Displacement demographics

35% of IDPs are children (< 18 years), while 34% are female adults and 31% are male adults.

Note: These figures represent sample data of 2 households per location provided by key informants and do not reflect the entire IDP population in each area.

## Methodology

The objective of the Mobility Snapshot is to support the humanitarian community in preparedness and response planning. Multi-layered data is routinely captured through Rounds using a suite of methodological tools designed to track and monitor displacement. These tools are in line with the [DTM Global Methodological Framework](#).

Data is collected nationwide through a combination of face-to-face and remote data collection methods, utilizing a network of over 44 enumerators and 3,600 key informants. These key informants consist of government officials, mukhtars, community representatives, and neighborhood focal points.

The following citation is required when using any data and information included in this information product: "International Organization for Migration (IOM), August 2024. DTM Mobility Snapshot, Round 41 IOM, Lebanon". For more information on terms and conditions of DTM reports and information products, please refer to <https://dtm.iom.int/terms-and-conditions>.