

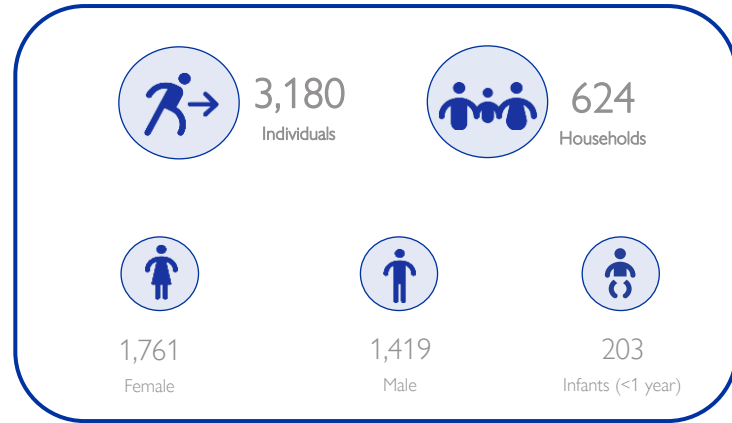
HIGHLIGHTS

South Sudan is grappling with a multifaceted humanitarian crisis marked by significant internal displacements. The factors fueling these displacement dynamics are diverse, encompassing communal clashes, land disputes, insecurity, violence, disasters, and cross-border movements.

Between 16th and 31st July 2024, a series of events led to the displacement of 3,180 individuals across Aweil West (2,190 individuals), Jur River (522 individuals), and Panyijar counties (468 individuals). Key informants have indicated that these displacements were primarily caused by flood-related disasters.

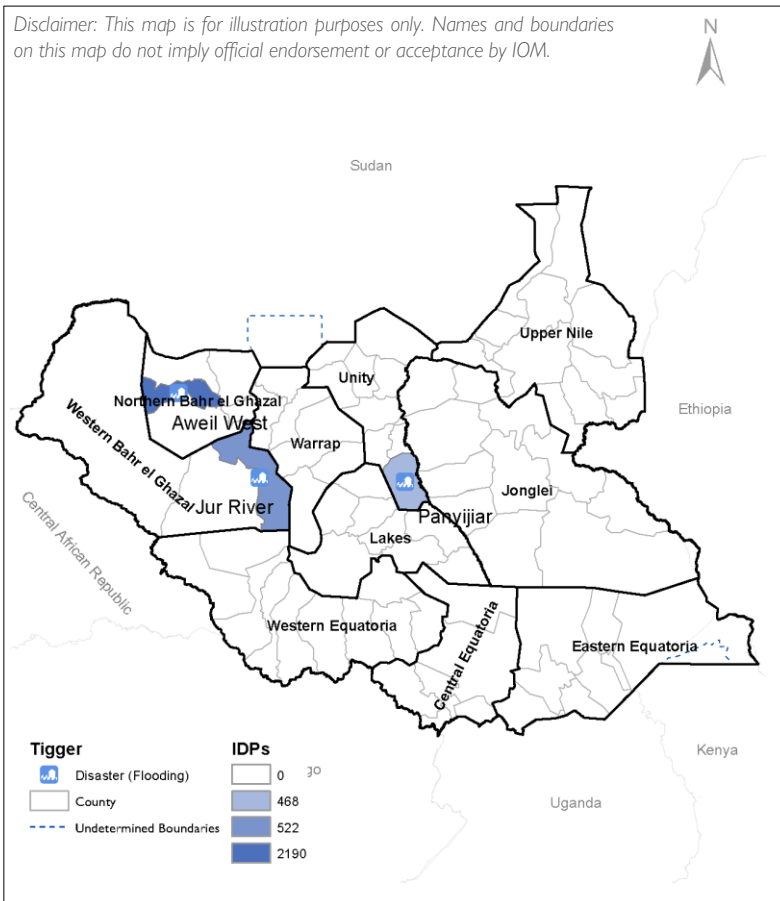
As a result of these displacements, there are urgent humanitarian needs. Displaced populations have identified shelter, food, and health services as their top three immediate priorities requiring urgent humanitarian intervention.

KEY DISPLACEMENT FIGURES



MAP - DISPLACEMENT

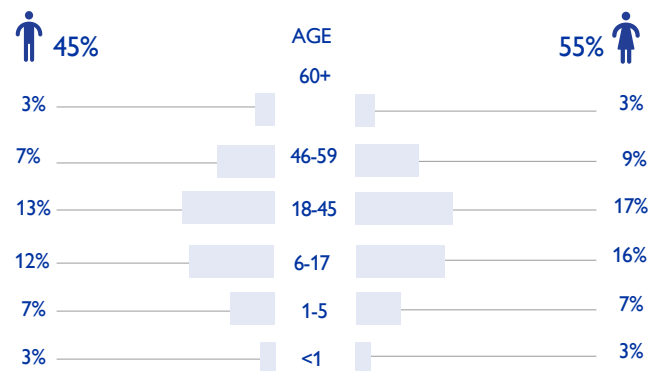
Disclaimer: This map is for illustration purposes only. Names and boundaries on this map do not imply official endorsement or acceptance by IOM.



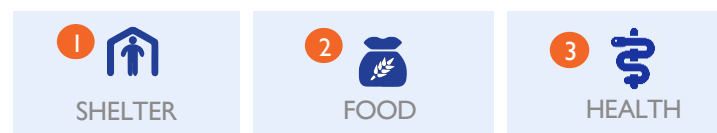
IDP FIGURES

COUNTY	MALE	FEMALE	TOTAL	TRIGGER
Aweil West	1,025	1,165	2,190	Disaster (Flooding)
Jur River	209	313	522	Disaster (Flooding)
Panyijar	185	283	468	Disaster (Flooding)
Total	1,419	1,761	3,180	

DEMOGRAPHICS



TOP THREE PRIORITY NEEDS RANKED



Perceptions of current needs are linked to key informant insights, highlighting and prioritizing immediate challenges or gaps in this specific context.

METHODOLOGY AND CONTEXT

The Event Tracking tool is a rapid displacement tracking system that collects data on over 50 households' movements through assessments by DTM staff and local enumerators. Information is gathered via direct visits or interviews with key informants, cross-referenced with secondary sources for accuracy. The data reflects the situation at the time of assessment, and while efforts are made to ensure accuracy, comprehensive coverage nationwide cannot be guaranteed by the International Organization for Migration (IOM).