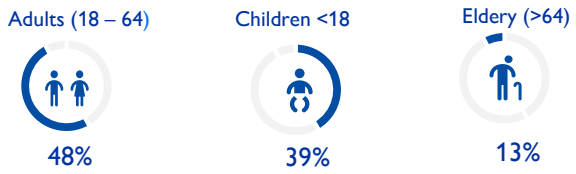
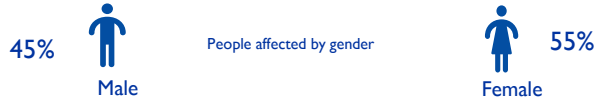




Overview of affected population – June & July 2024

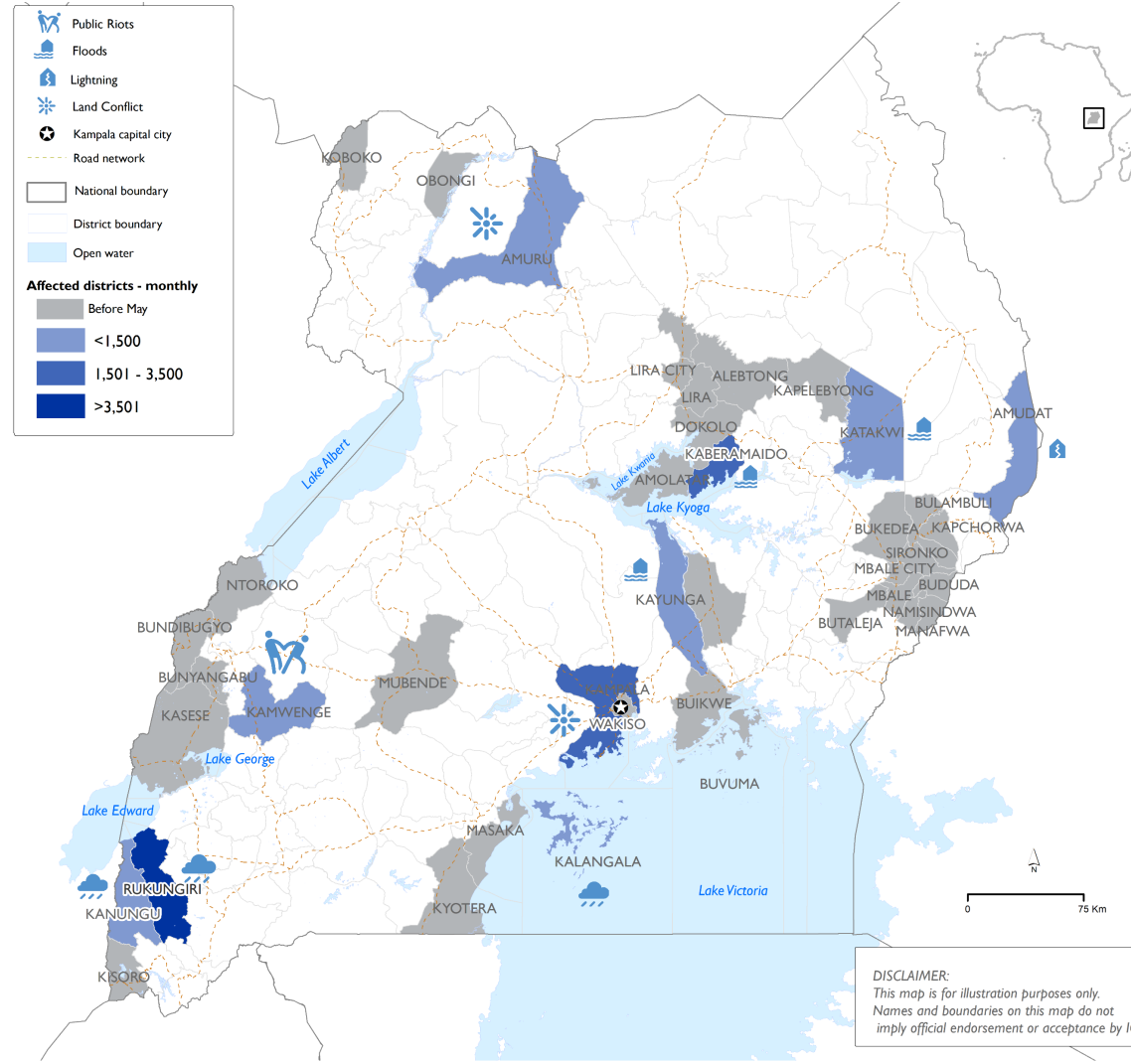


Note: The percentages presented are based on the disaggregated data provided

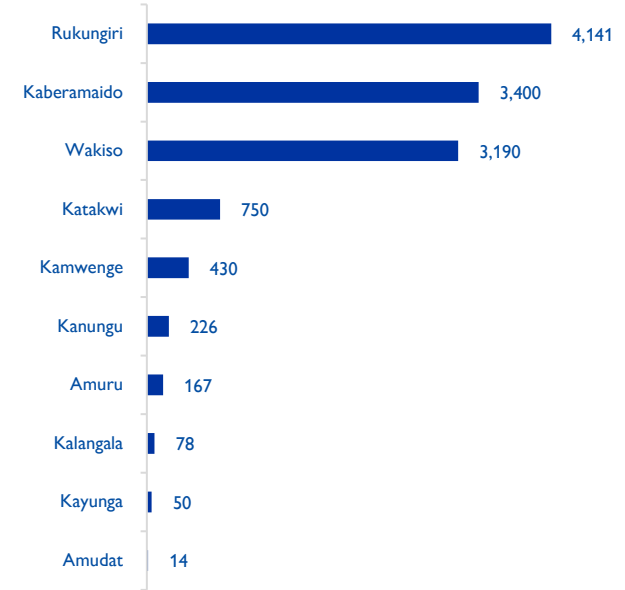
June & July 2024 observations

- Scattered rains experienced during the months of June and July triggered flash floods and heavy storms. Lightning was reported in the Karamoja region in Amudat district, land conflicts in Wakiso and Amuru while public riots in Kamwenge.
- The hazards affected 12,446 individuals (2,777 households), with 1,989 people from 540 households internally displaced.
- Adults between 18 and 64 years were the most affected age group (48%), followed by children below the age of 18 (39%) and elderly above 64 (13%). Notably, more than half of affected people were female (55%).
- Urgent needs have emerged, with health, food assistance and NFI as critical priorities in the aftermath of the hazards.
- Infrastructure damage was significant, with 231 houses completely destroyed, 150 houses partially damaged, and 69 water facilities, 9 schools and 8 health facilities affected.

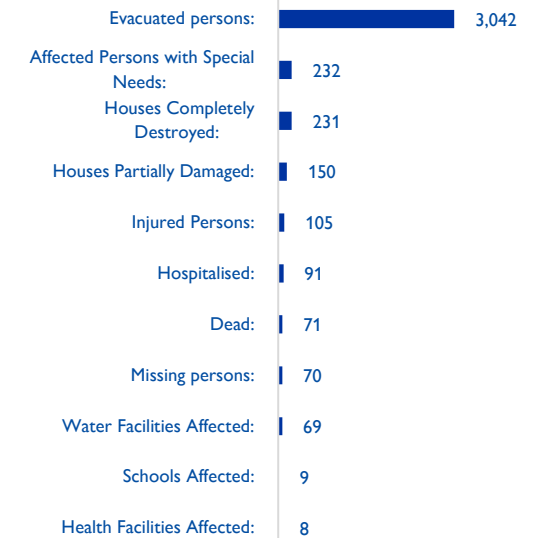
Districts affected in 2024



Affected people by district in June & July 2024



Hazard Impacts – June & July 2024



Partners



DISCLAIMER:
 This map is for illustration purposes only. Names and boundaries on this map do not imply official endorsement or acceptance by IOM.

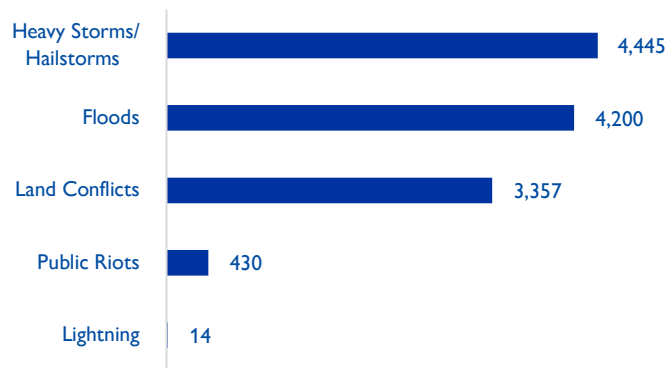


Priority needs assessment

District	Subcounty	Hygiene promotion:	Health:	Water supply:	Sanitation:	Shelter:	Food assistance:	Nutrition:	Education:	NFI:	Protection:	Child protection:	SGBV:	Livelihood:
Amudat	Loroo	1	1	1	1	1	5	1	1	1	1	1	1	5
Amuru	Attiak	2	2	2	1	2	1	2	2	1	1	1	1	2
Kaberamaido	Aperkira	3	2	1	2	2	1	2	2	1	2	3	2	2
Kaberamaido	Ochero	2	2	2	2	2	2	2	1	1	2	2	2	2
Kalangala	Kyamuswa	3	1	1	1	2	2	3	3	1	3	2	2	2
Kamwenge	Bwizi	1	1	1	1	1	1	1	4	1	1	1	1	1
Kanungu	Kambuga Town Council	1	2	2	2	3	1	1	2	2	2	2	3	3
Katakwi	Toroma	2	2	2	1	2	1	2	2	1	2	2	2	1
Kayunga	Galiraya	1	1	1	1	2	3	2	3	4	4	2	2	2
Rukungiri	Bwambara	2	2	2	3	2	1	2	2	3	2	3	2	2
Wakiso	Nansana Division	1	1	1	1	1	1	1	1	1	1	1	1	1

KEY	HIGH	MEDIUM	LOW	NOT	NOT APPLICABLE
PRIORITY	1	2	3	4	5

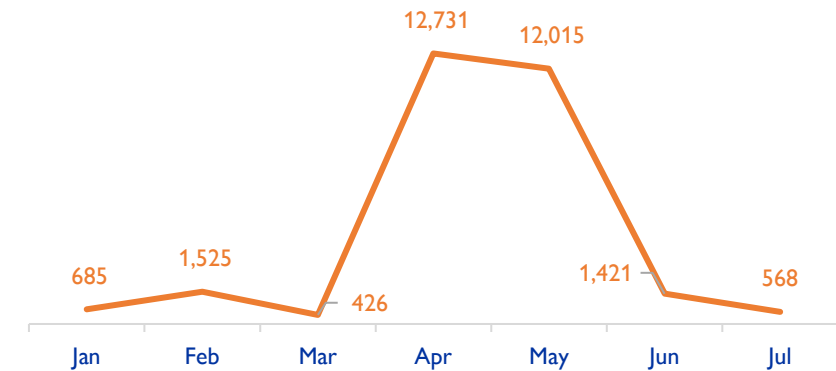
Number of affected people by hazards in June & July 2024



2024 Monthly Impacts (affected) due to hazards



2024 Monthly Impacts (IDPs) due to hazards



The following citation is required when using any data and information included in this report and information product: “International Organization for Migration (IOM), June - July 2024. Uganda Multi-hazard EET. IOM Uganda”.

For more information on the terms and conditions of DTM reports and information products, please refer to <https://dtm.iom.int/terms-and-conditions>.