

DISPLACEMENT TRACKING MATRIX — NIGERIA EMERGENCY TRACKING TOOL (ETT)

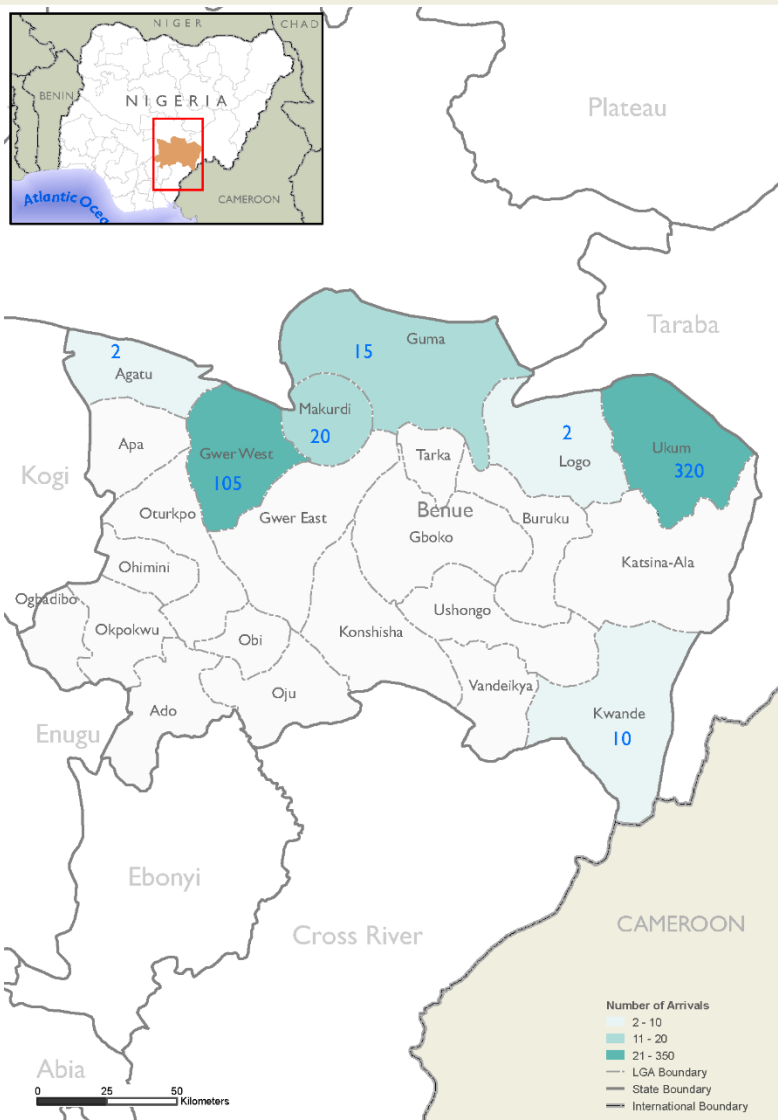
SUMMARY OF MOVEMENTS IN BENUE STATE, 22 – 28 July 2024

DASHBOARD: 04

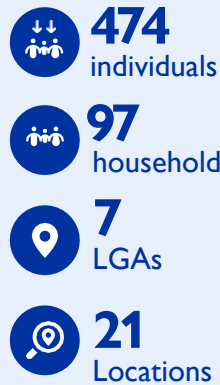
DATA COLLECTION: Week 8, 2024

DATE OF PUBLICATION 01 AUGUST 2024

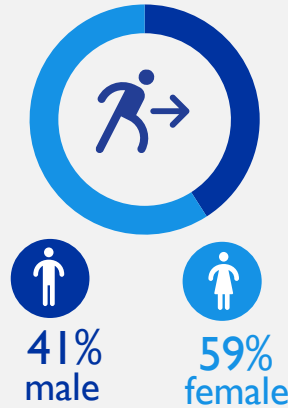
OVERVIEW OF DISPLACEMENTS



KEY FIGURES



GENDER BREAKDOWN



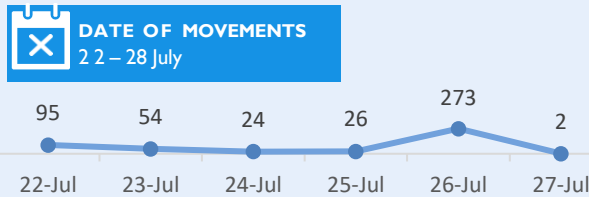
METHODOLOGY

The DTM Emergency Tracking Tool (ETT) is deployed to track and collect information on large and sudden population movements, provide frequent updates on the scale of displacement and quantify the affected population when needed. As a sub-component of the mobility tracking methodology in Nigeria, ETT utilizes direct observations and a broad network of key informants to capture the best estimates of the affected population per location, enabling targeted humanitarian response planning.

LIMITATIONS

The ETT figures reported are not cumulative of all the affected persons thus far but rather provide a snapshot of the current displacement situation on the date indicated. The data and information reported on this dashboard are related solely to the movements caused by the triggers on page two between 22 – 28 July.

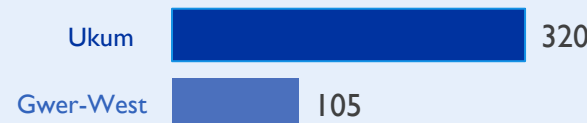
DISPLACEMENT EVOLUTION



TOP REPORTED NEEDS*



TOP AREAS OF ORIGIN



ALERT SUMMARY

Between 22 and 28 July 2024, a total of 474 new arrivals were recorded at locations in Benue State. The new arrivals were recorded at locations in Agatu, Guma, Gwer-West, Kwande, Logo, Makurdi and Ukum Local government areas (LGAs) of the conflict-affected Benue State.

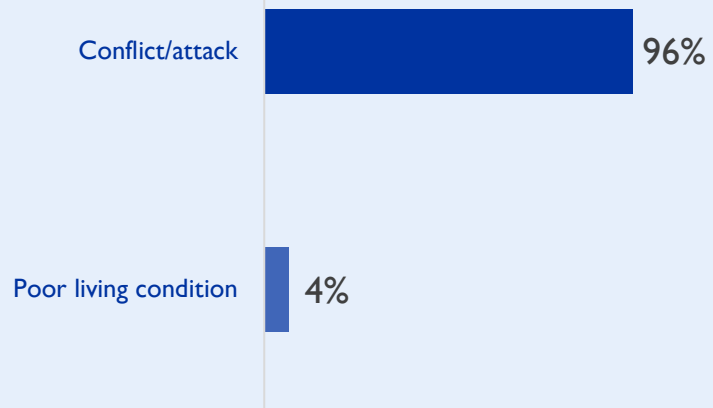
ETT assessments identified conflict/attack as the main trigger for these movements in the state.

The majority of the arrivals were from Ukum LGA, with 320 individuals, which accounted for 68 per cent of the arrivals. This was followed by arrivals from Gwer-West LGA with 105 individuals, which accounted for 22 per cent of the arrivals and a total of 20 individuals arrived from Makurdi LGA. These arrivals account for 4 per cent of the arrivals for the week.

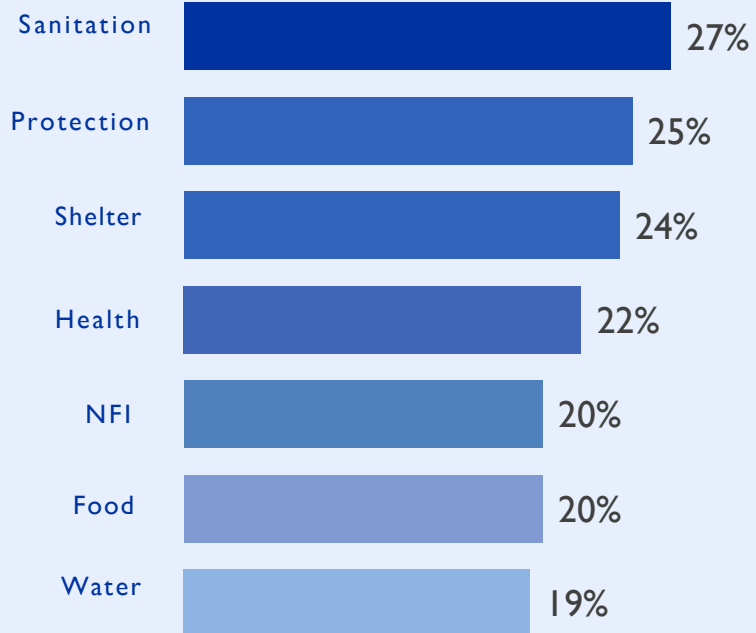
This map is for illustration purposes only. Names and boundaries on this map do not imply official endorsement or acceptance by IOM.

*Multiple-choice response

PERCENTAGE OF INDIVIDUALS BY MOVEMENT TRIGGER

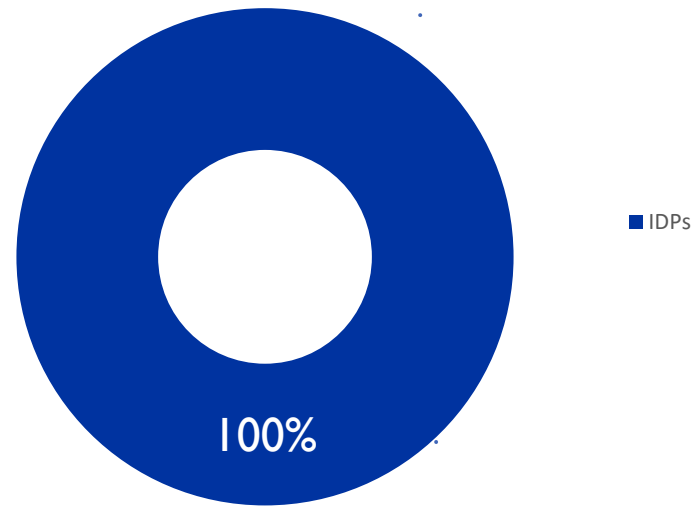


NEEDS EVOLUTION*

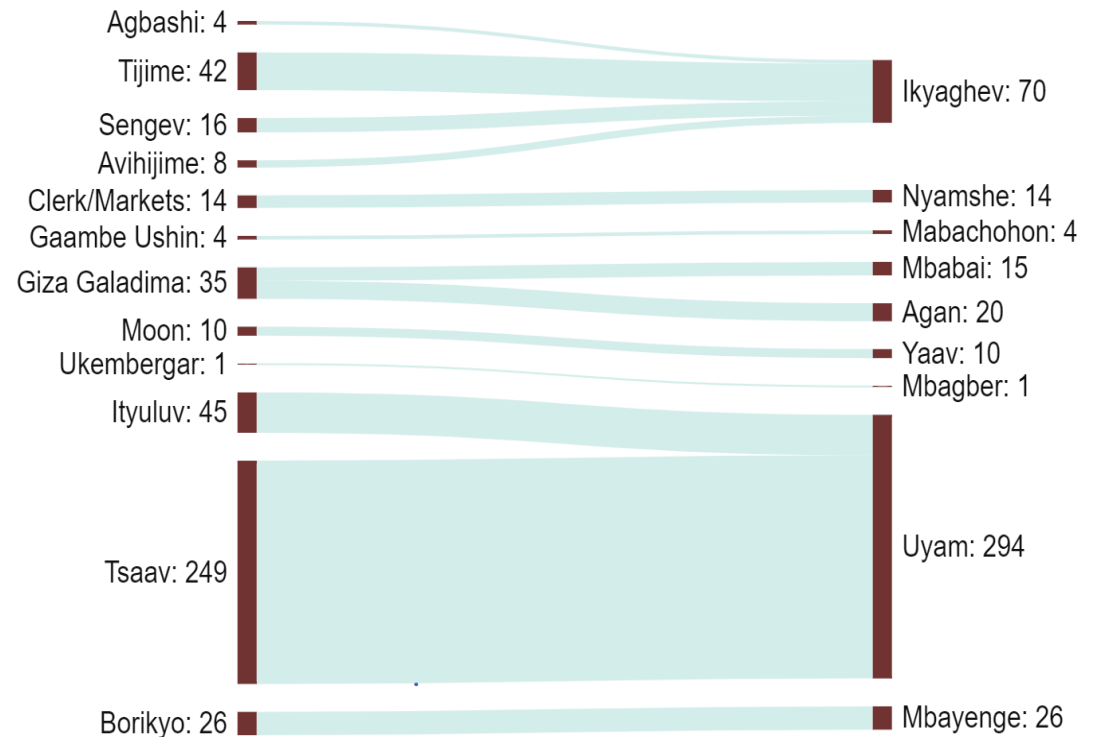


*Multiple-choice response

ARRIVING POPULATION



MOVEMENT FLOWS BY WARD



DISPLACEMENT BREAKDOWN

Arrival location			Movement location			Number of individuals
State	LGA	Ward	State	LGA	Ward	
Benue	Agatu	Usha	Benue	Agatu	Usha	2
	Gwer-West	Ikyaghev Nyamshe	Nasarawa	Doma	Agbashi	4
			Benue	Gwer-West	Clerk/Markets	14
		Tijime			33	
		Sengev			16	
		Tijime			9	
		Mbachohon	Avihijime	8		
	Gaambe Ushin		4			
	Guma	Mbabai	Nasarawa	Keana	Giza Galadima	15
	Makurdi	Agan	Nasarawa	Keana	Giza Galadima	20
	Kwande	Yaav	Benue	Kwande	Moon	10
	Logo	Mbagber	Benue	Logo	Mbagber	1
					Ukemberga	1
	Ukum	Uyam	Benue	Ukum	Ityuluv	45
		Mbayenge	Benue	Ukum	Borikyo	26
Uyam		Benue	Ukum	Tsaav	249	



GLOBAL DATA INSTITUTE
DISPLACEMENT
TRACKING MATRIX



Humanitarian Aid
And Civil Protection



USAID
FROM THE AMERICAN PEOPLE