

IDP AND RETURNEE ATLAS — APRIL 2023

MOBILITY TRACKING — ROUND 44 — NORHT-EAST NIGERIA



Photo: Pulka, 2018
© IOM / Alfred Caballero



Nigeria
Humanitarian
Fund



USAID
FROM THE AMERICAN PEOPLE



Humanitarian Aid
And Civil Protection



ESTIMATED NUMBERS OF IDPS AND RETURNEES BY STATE

IOM's Displacement Tracking Matrix (DTM) provides support to the Government and humanitarian partners by establishing a comprehensive system that collects, analyses and disseminates data on IDPs and returnees to ensure timely and effective assistance to the affected populations. Data collection takes place at a granular level and is repeated at regular intervals to ensure accurate and up-to-date information.

As of February 2023, the DTM identified a total of 2,388,703 IDPs in 487,978 households and 2,110,039 returnees in 346,166 households. The IDP population included IDPs in camps and camp-like settings (834,836 individuals or 35%) and IDPs residing in host communities (1,553,867 individuals or 65%). The returnee population included IDP returnees (1,887,995 individuals or 89%) and returnees from abroad (222,044 individuals or 11%).

Data collection for IDPs took place between December 2022 and February 2023 in 2,482 localities in the six states of north-east Nigeria (Borno, Adamawa, Yobe, Gombe, Taraba and Bauchi). Data collection for returnees took place during the same assessment period in the BAY states of north-east Nigeria (Borno, Adamawa and Yobe).



Number of IDPs **2,388,703** (as of February 2023)

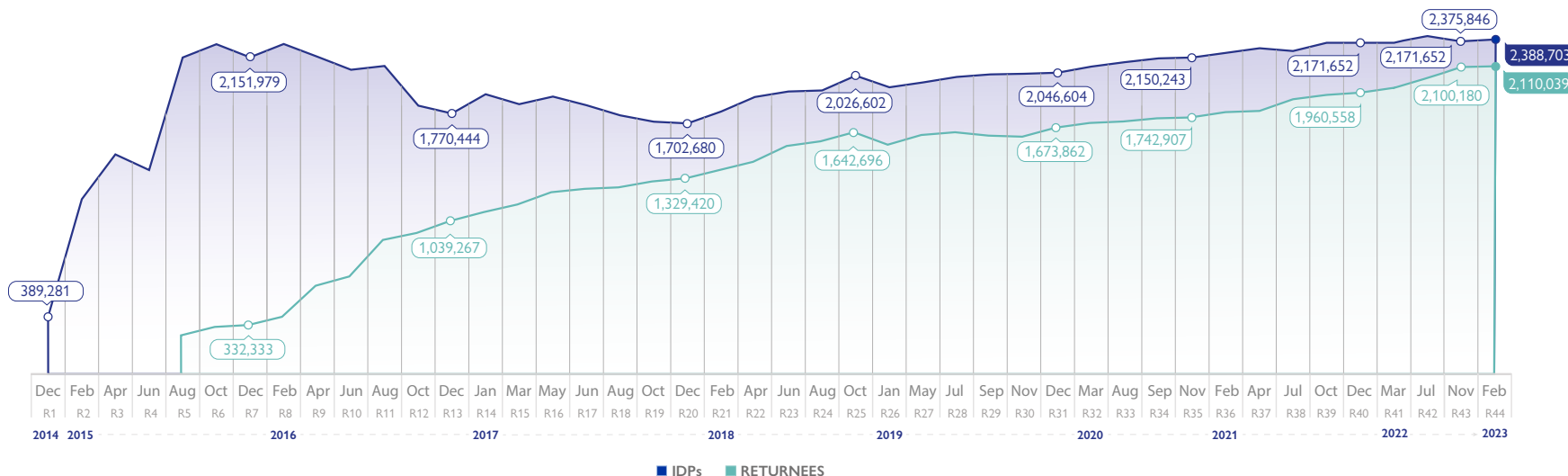


Number of returnees **2,110,039** (as of February 2023)

Estimated number of returnees and IDPs per state

State	IDPs	IDPs (%)	Returnees	Returnees (%)
Borno	1,804,850	76%	904,185	43%
Adamawa	223,436	9%	850,535	40%
Yobe	172,393	7%	355,319	17%
Bauchi	68,424	3%	/	/
Taraba	67,848	3%	/	/
Gombe	51,752	2%	/	/
Total	2,388,703	100%	2,110,039	100%

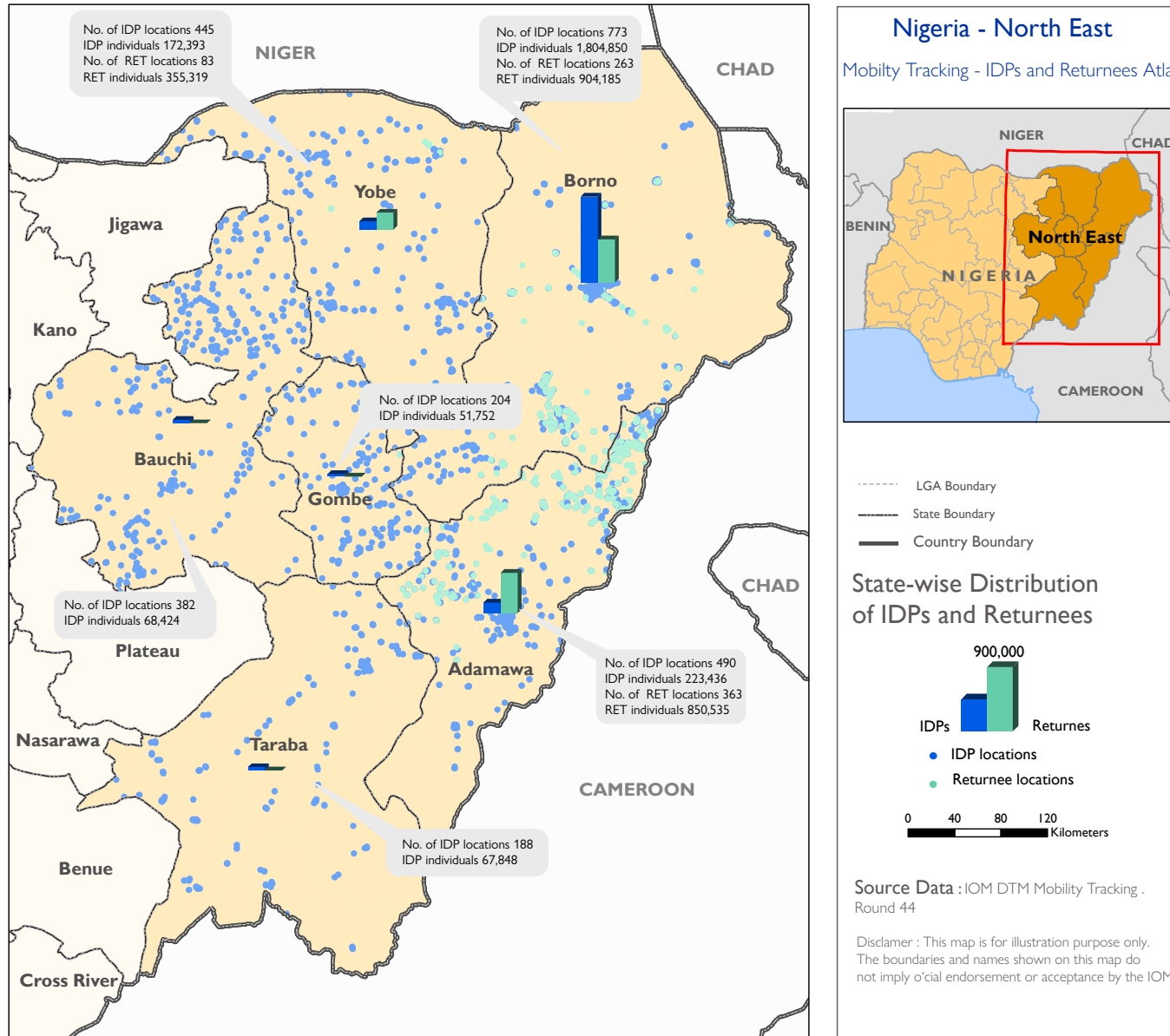
Number of IDPs and returnees over time





IDP AND RETURNEES IN NORTH-EAST NIGERIA

The location map in A0 format can be accessed on page 18

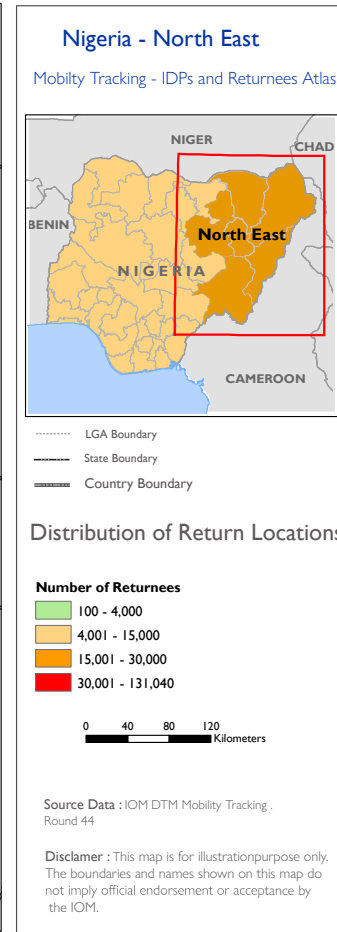
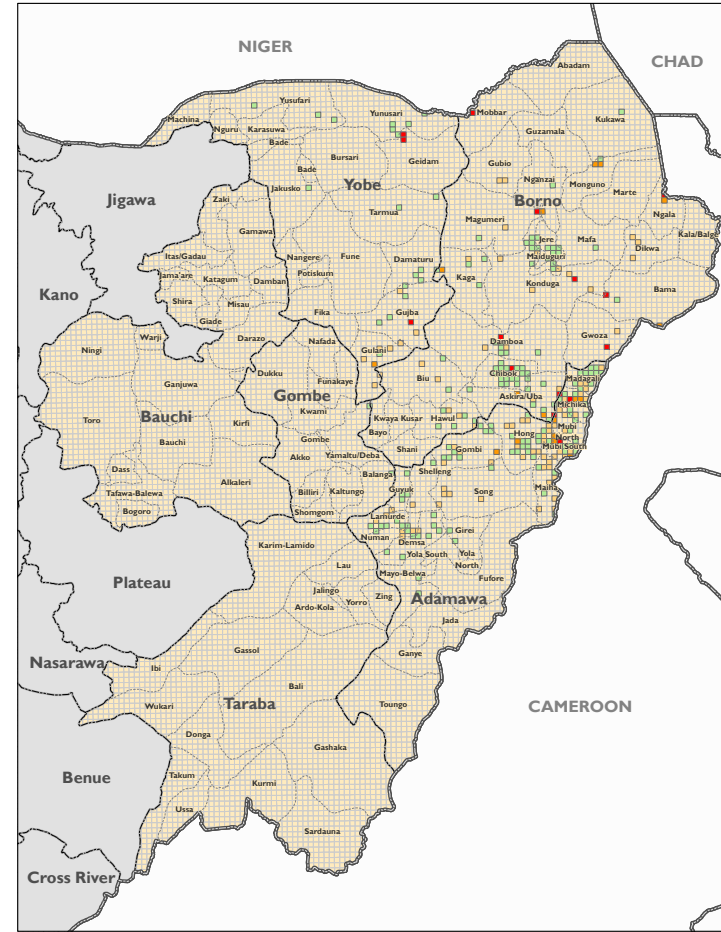
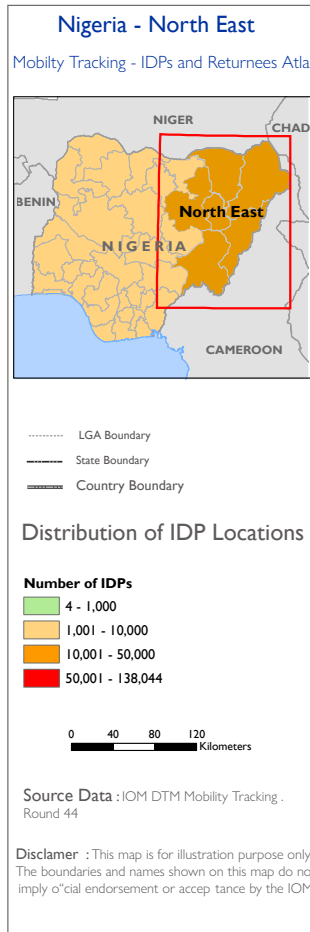




IDP AND RETURNEE LOCATIONS IN NORTH-EAST NIGERIA

IDP locations in north-east Nigeria

Returnee locations in north-east Nigeria

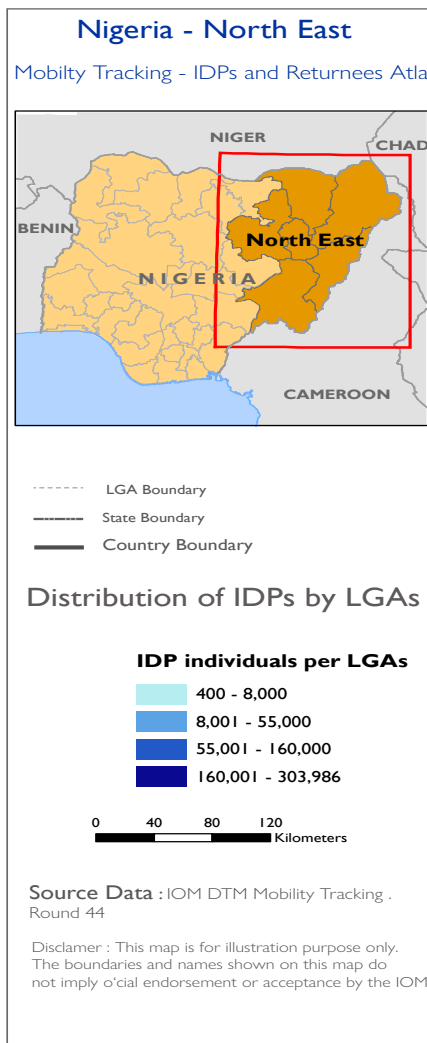
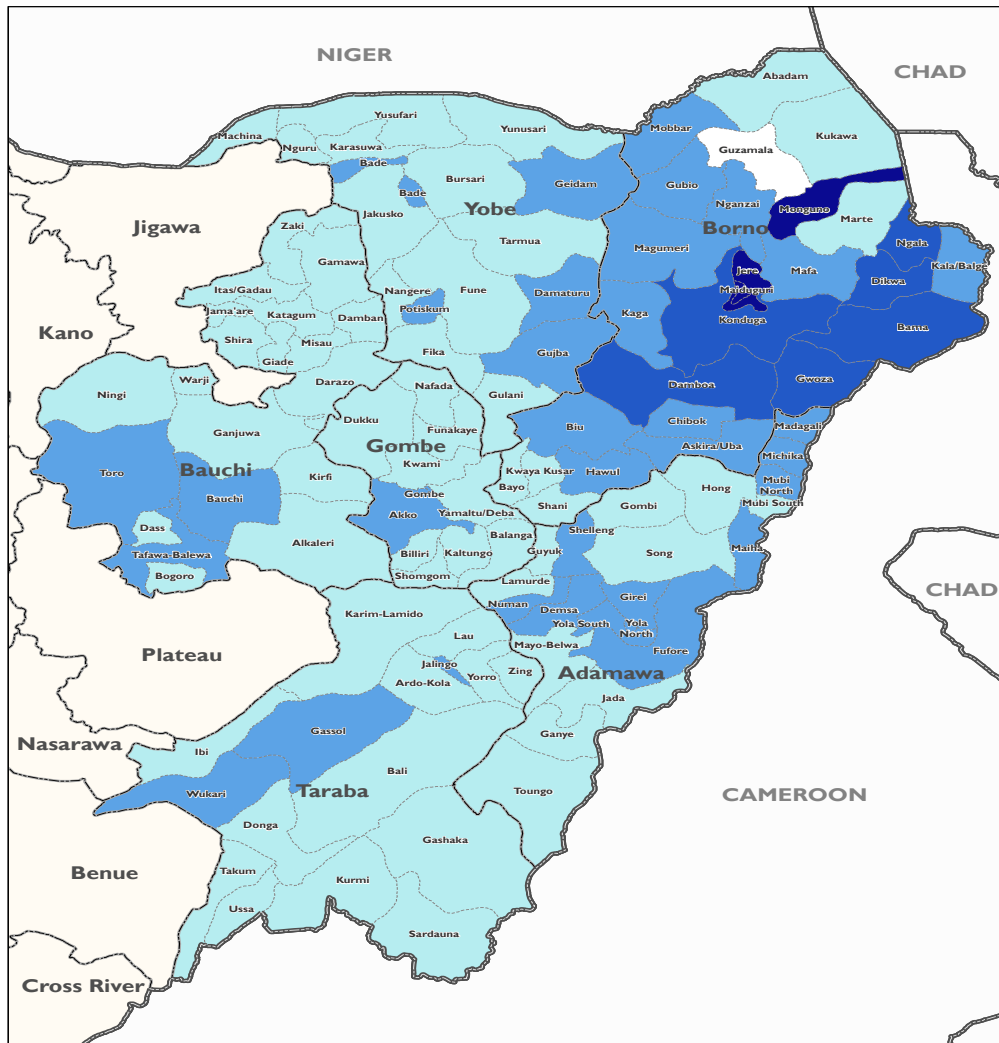


The location map in A0 format can be accessed on page 18



IDPS PER LGA AS OF FEBRUARY 2023

A total of 2,388,703 IDPs were identified as of February 2023 in north-east Nigeria. The state of Borno hosted the most significant number of IDPs with 1,804,850 individuals (76% of IDPs). All 10 LGAs that are hosting the highest numbers of IDPs in the region are in Borno State.



Top 10 LGAs hosting the highest numbers of IDPs in north-east Nigeria as of February 2023 (Accounting for 61% of the caseload of IDPs in north-east Nigeria)

LGA	State	Number of IDPs
Jere	Borno	303,986
Maiduguri M.C.	Borno	239,963
Monguno	Borno	162,703
Gwoza	Borno	156,204
Bama	Borno	139,694
Ngala	Borno	108,333
Damboa	Borno	107,528
Dikwa	Borno	98,616
Konduga	Borno	88,198
Nganzai	Borno	54,377

IDPs in camps/camp-like settings vs IDPs dispersed in host communities

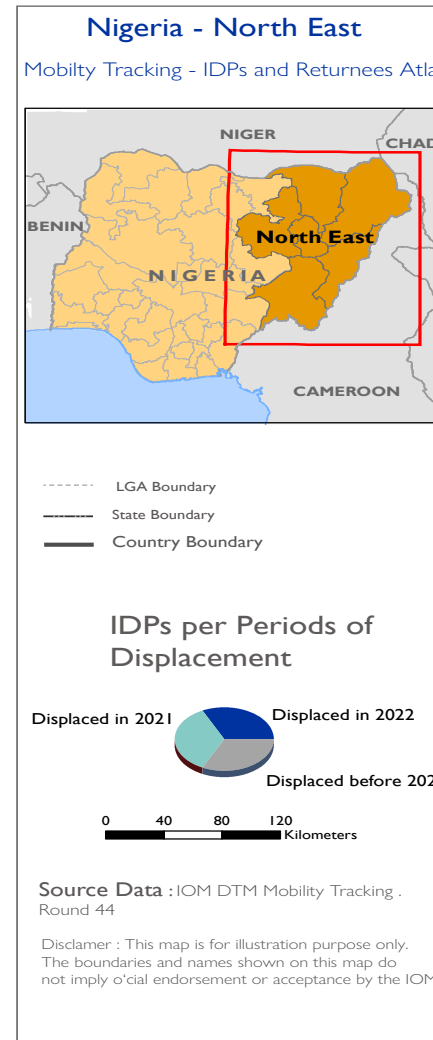
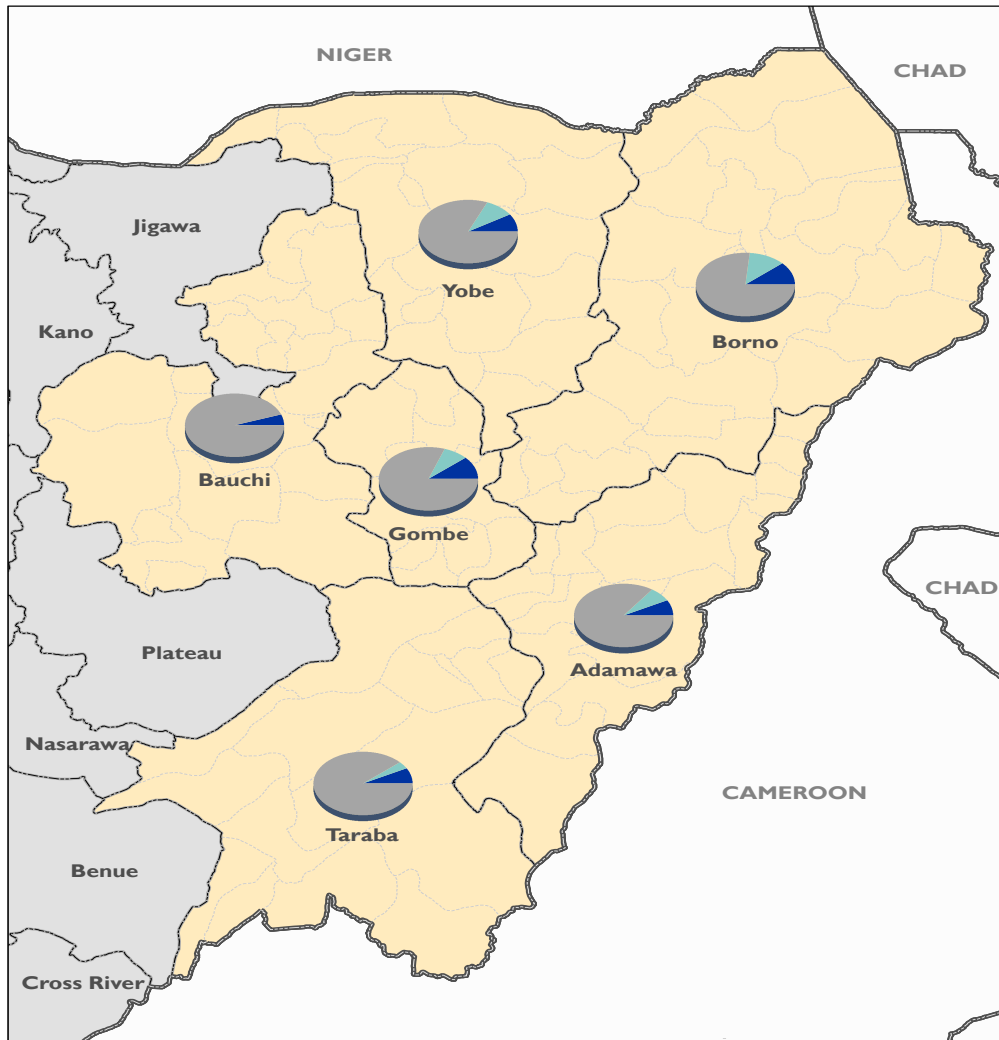
State	IDPs in camps/ camp-like settings	IDPs in host communities
Adamawa	13,327	210,109
Bauchi	150	68,274
Borno	804,052	1,000,798
Gombe	/	51,752
Taraba	5,020	62,828
Yobe	12,287	160,106
Total	834,836	1,553,867

Thirty-five per cent of IDPs in north-east Nigeria are living in camps while 65 per cent of IDPs are dispersed in host communities.

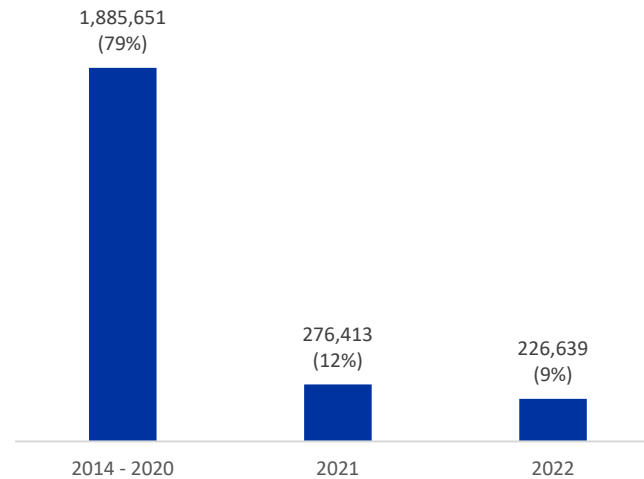


IDPS PER PERIOD OF DISPLACEMENT AT STATE LEVEL

A total of 1,885,651 IDPs or 79 per cent of the total IDP population were displaced before 2021. Twenty-one per cent of the IDP population in north-east Nigeria were displaced in the years 2021 and 2022. The State of Borno recorded the highest percentage of displacements in the years 2021 and 2022 (23%).



Total number of IDPs as of February 2023 per period of displacement



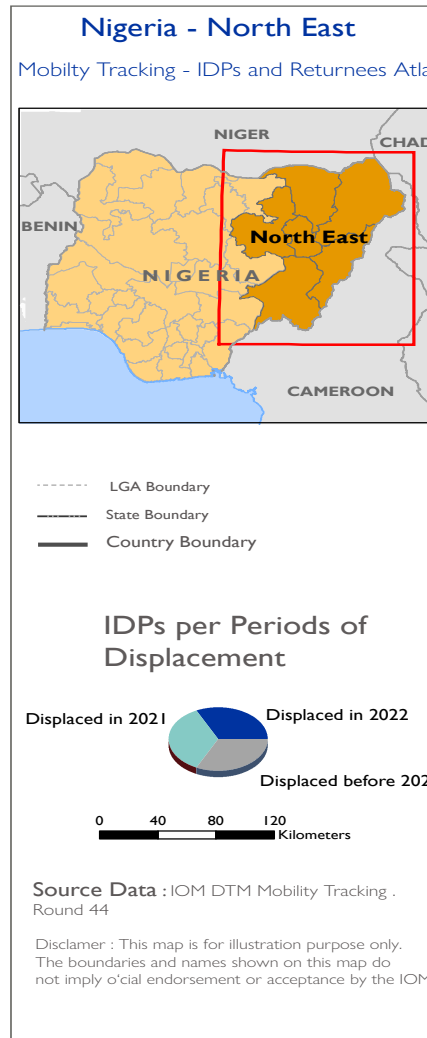
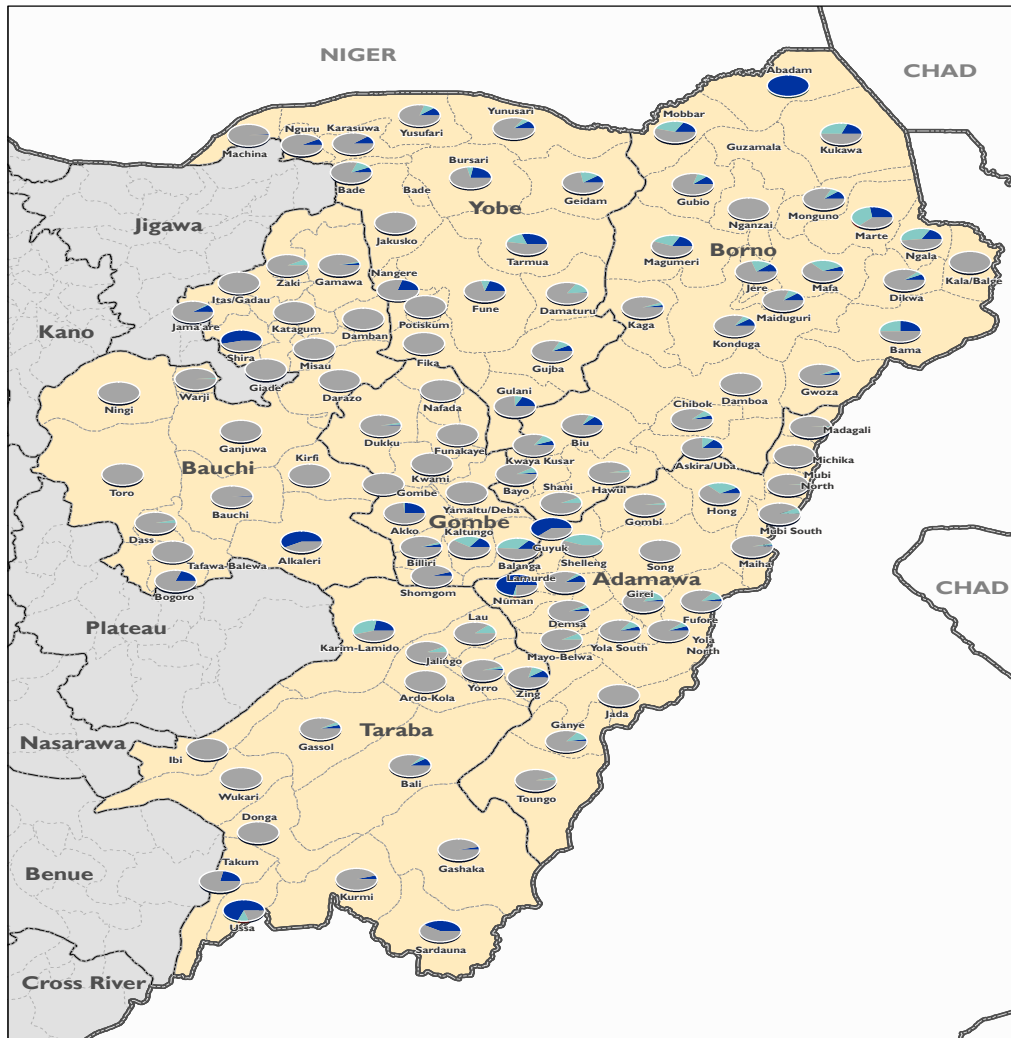
IDPs per period of displacement at state level

State	2014 - 2020	2021	2022
Adamawa	86%	7%	7%
Bauchi	94%	1%	5%
Borno	77%	13%	10%
Gombe	81%	9%	10%
Taraba	90%	3%	7%
Yobe	82%	10%	8%



IDPS PER YEAR OF DISPLACEMENT AT LGA LEVEL

As indicated on the map below, newly displaced IDPs (as of January 2022) are predominantly found around Maiduguri (Jere and M.M.C. LGAs), the largest city in Borno State and in the eastern LGAs of Borno State towards the border with Cameroon (Bama, Ngala). It is to be noted that all 10 LGAs accounting for the highest numbers of IDP arrivals in 2022 are all located in Borno State.



IDPs per period of displacement in the top 10 LGAs with the highest number of IDPs

LGA	2014 - 2020	2021	2022
Jere	70%	19%	11%
Maiduguri M.C.	81%	9%	10%
Monguno	82%	7%	11%
Gwoza	92%	5%	3%
Bama	50%	25%	25%
Ngala	48%	36%	16%
Damboa	98%	1%	1%
Dikwa	88%	5%	7%
Konduga	84%	6%	10%
Nganzai	99%	<1%	<1%

Top 10 LGAs accounting for the highest numbers of IDP arrivals in 2022 (Accounting for 71% of the IDPs displaced in 2022)

LGA	State	Number of IDPs
Bama	Borno	35,020
Jere	Borno	32,477
Maiduguri M.C.	Borno	24,315
Ngala	Borno	17,598
Monguno	Borno	17,338
Konduga	Borno	8,503
Mobbar	Borno	7,379
Dikwa	Borno	7,238
Magumeri	Borno	6,426
Biu	Borno	5,391

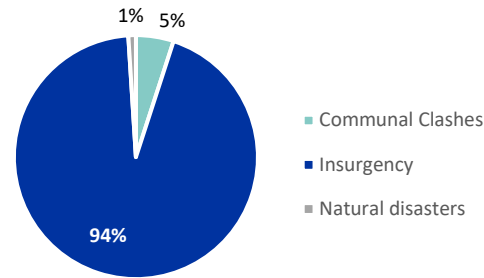


IDPS AND REASONS FOR DISPLACEMENT

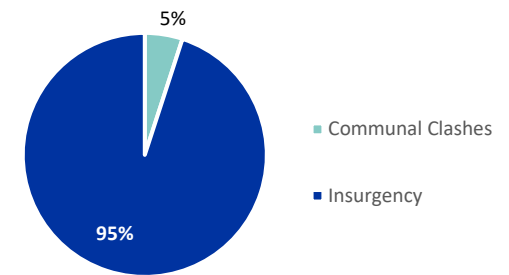
The ongoing insurgency in north-east Nigeria is widely reported as the main driver of displacement. The insurgency was followed by communal clashes and, to a limited extent, natural disasters. Communal clashes involve confrontations between ethnic and religious groups, often triggered by land and border issues, and increasing tensions between herder communities and sedentary farmers.

It is notable that the majority of IDPs displaced by the insurgency are situated in the LGAs Jere, Maiduguri M.C., Konduga, Bama, Gwoza, Ngala and Damboa of Borno State. IDPs displaced as a result of communal clashes are centred in the north-eastern part of Adamawa State, Taraba State and western Bauchi. While communal clashes accounted for 5 per cent of the displacements before the year 2020, they were cited as the main trigger of displacement by 8 per cent of the IDPs displaced in 2022.

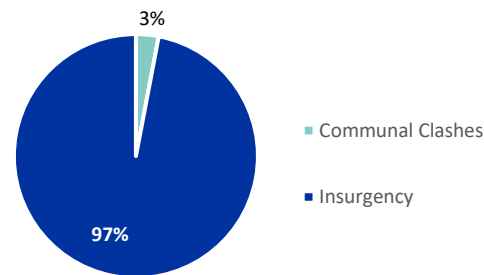
Reasons for displacement (total IDPs)



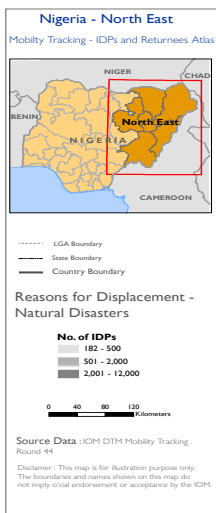
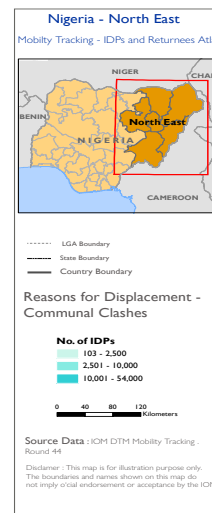
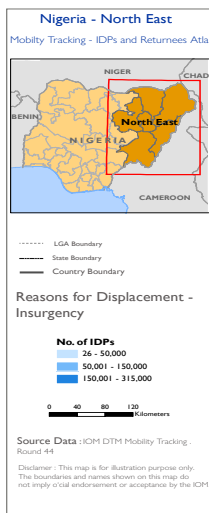
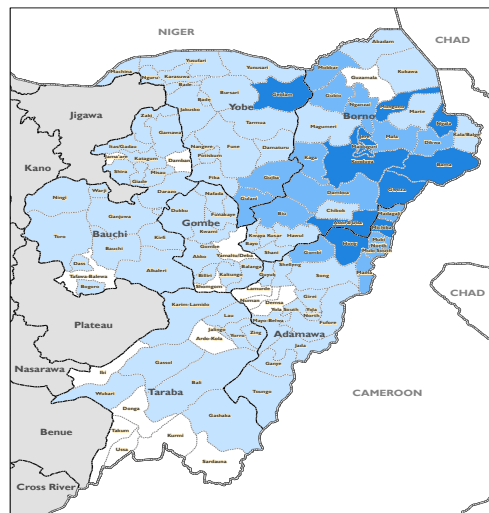
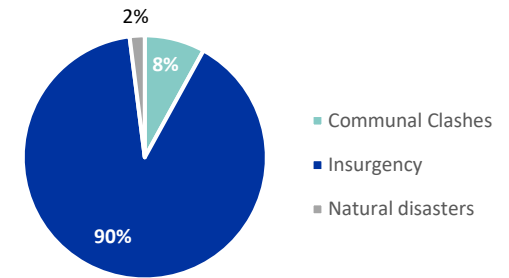
Reasons for displacement (displaced between 2014 and 2020)



Reasons for displacement (displaced in 2021)



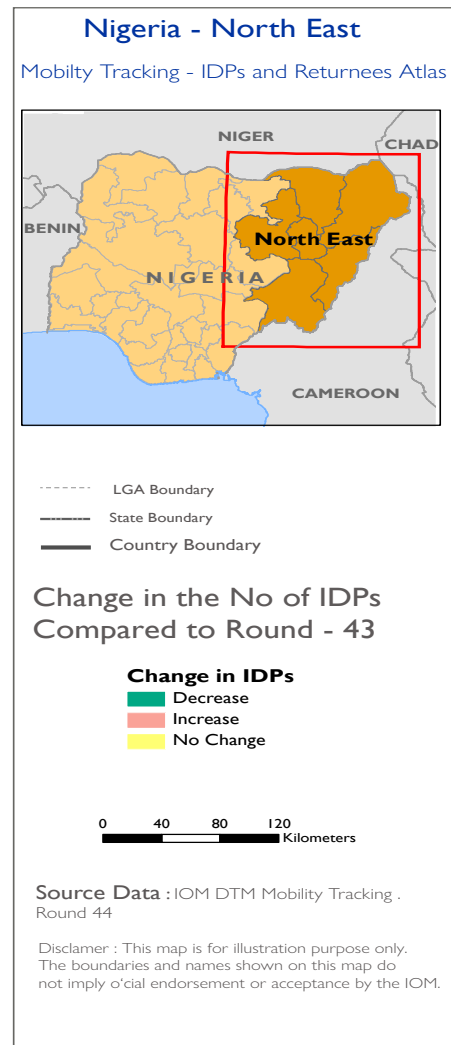
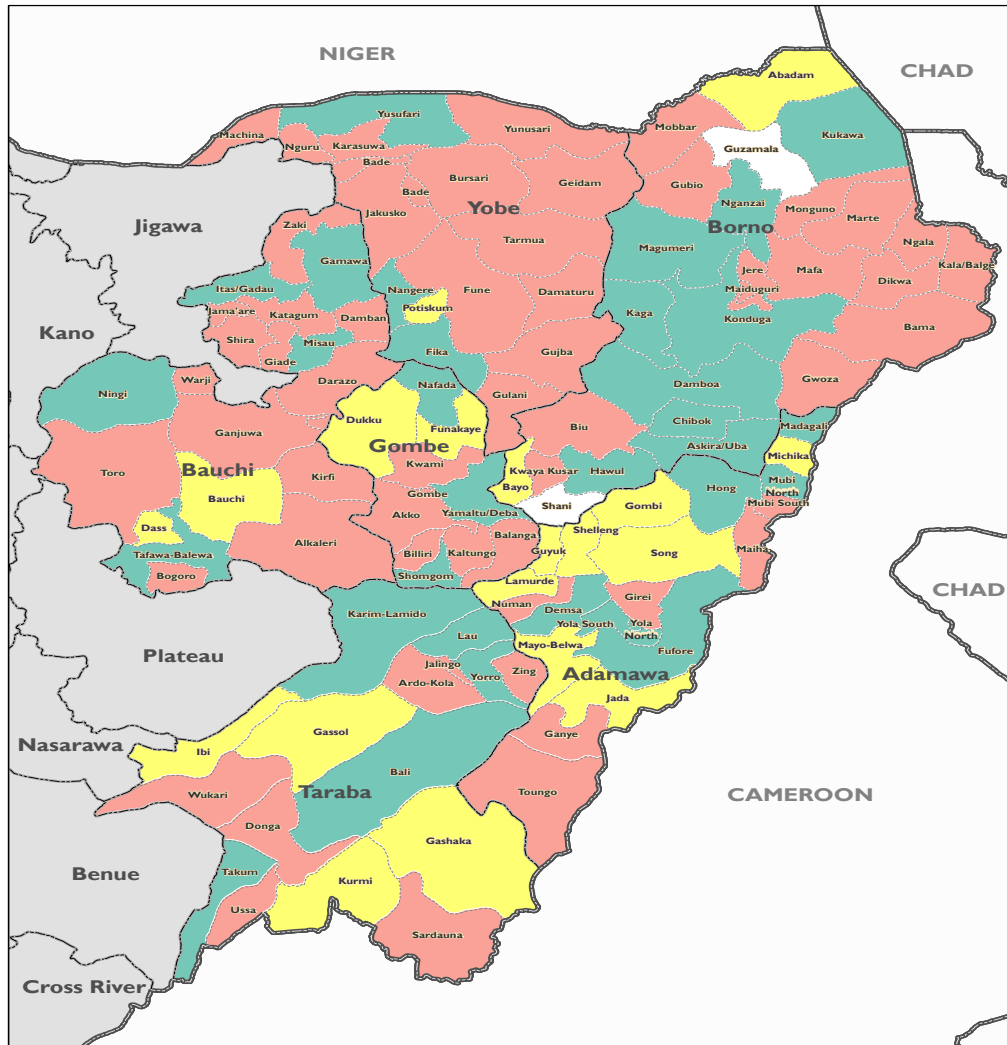
Reasons for displacement (displaced in 2022)



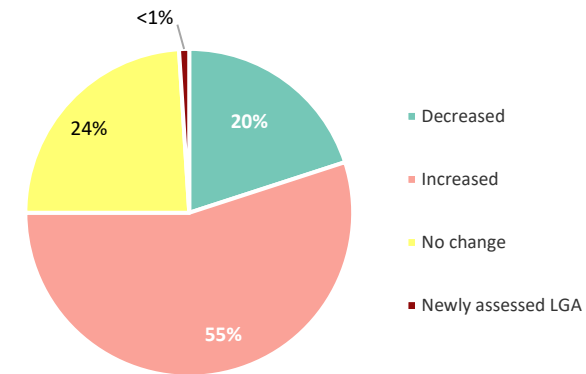


IDP COMPARISON AT LGA LEVEL (OCTOBER 2022 - FEBRUARY 2023)

The map below compares IDP numbers from February 2023 with IDP numbers from October 2022 at the LGA level. In 55 per cent of the LGAs, the number of IDPs increased while in 20 per cent of the LGAs, the number of IDPs decreased. A major decrease in IDPs was noted in Konduga LGA (-27,305 IDPs) as a result of the camp closures.



Percentage of LGAs and change in IDP numbers



Top LGAs with the highest IDP increase since October 2022

LGA	State	Increase of IDPs
Wukari *	Taraba	14,910
Bama	Borno	6,329
Akko	Gombe	3,137
Dikwa	Borno	2,326
Bogoro	Bauchi	1,757
Mobbar	Borno	1,709
Shira	Bauchi	1,681
Biu	Borno	1,323
Monguno	Borno	1,183
Gulani	Taraba	1,065

* It is to be noted that the increase of IDPs in the LGA Wukari is due to the fact that this LGA was not assessed in the previous rounds.



IDP COMPARISON AT LOCATION LEVEL (OCTOBER 2022 - FEBRUARY 2023)

The map below compares IDP numbers from February 2023 with IDP numbers from October 2022 at the locality level. In 59 per cent of the locations, no changes in IDP numbers were recorded, while in 28 per cent of the locations, the number of IDPs increased. Additionally, 46 new IDP locations were identified during the assessment in July February 2023.



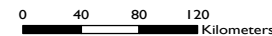
Nigeria - North East
Mobility Tracking - IDPs and Returnees Atlas



--- LGA Boundary
 - - - State Boundary
 ——— Country Boundary

Distribution of IDP Locations

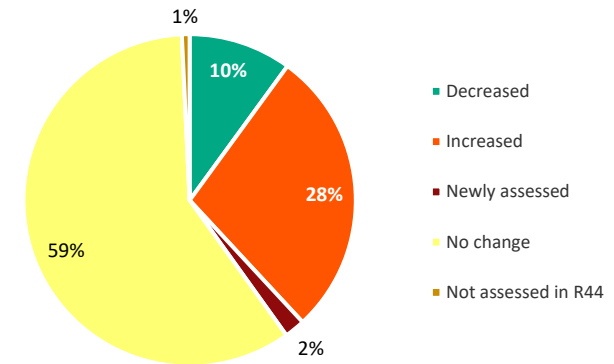
Change in IDPs
 ■ Decrease
 ■ No change
 ■ Increase



Source Data : IOM DTM Mobility Tracking . Round 44

Disclaimer : This map is for illustration purpose only. The boundaries and names shown on this map do not imply official endorsement or acceptance by the IOM.

Percentage of locations and change in IDP numbers



IDP comparison at state level

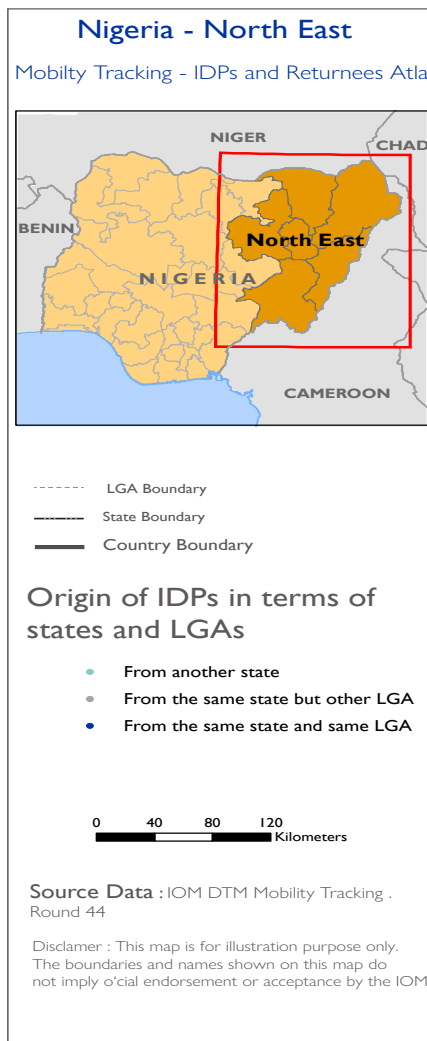
State	Oct 2022	Feb 2023	Comparison
Adamawa	223,910	223,436	- <1%
Bauchi	64,912	68,424	+ 5%
Borno	1,820,179	1,804,850	- 1%
Gombe	47,977	51,752	+8%
Taraba	52,123	67,848	+30%
Yobe	166,745	172,393	+3%
Total	2,375,846	2,388,703	+ <1%

For the convenience of the spatial visualisation, locations are aggregated based on a grid in the map

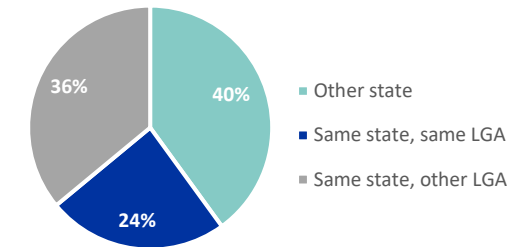


IDPS PER LOCATION OF DISPLACEMENT

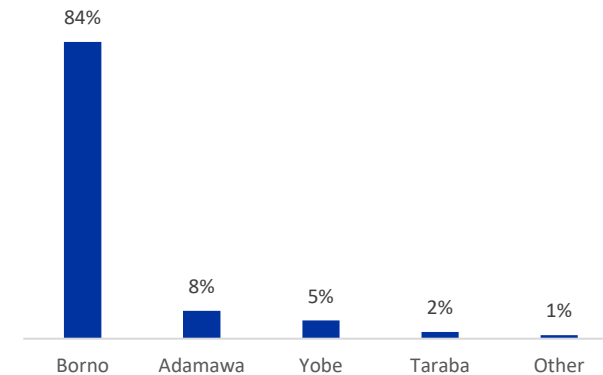
The map below indicates where IDPs are displaced. In 24 per cent of the locations assessed, the majority of the IDPs were displaced within their LGA of origin. In 40 per cent of the locations assessed, the majority of IDPs were displaced from another state and in 36 per cent of the locations assessed, the majority of IDPs were displaced from another LGA, within their state of origin.



Percentage of IDPs per area of displacement



Percentage of IDPs per state of origin

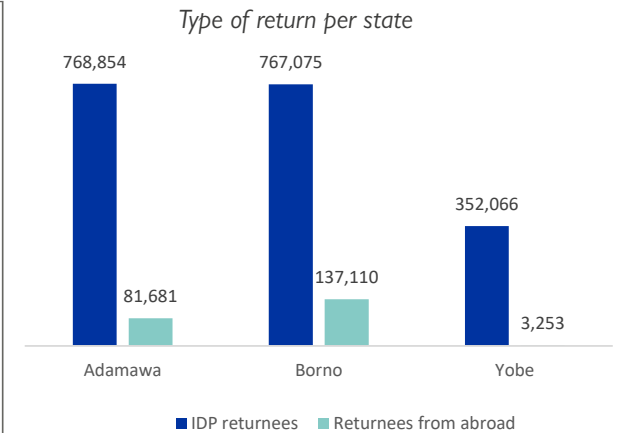
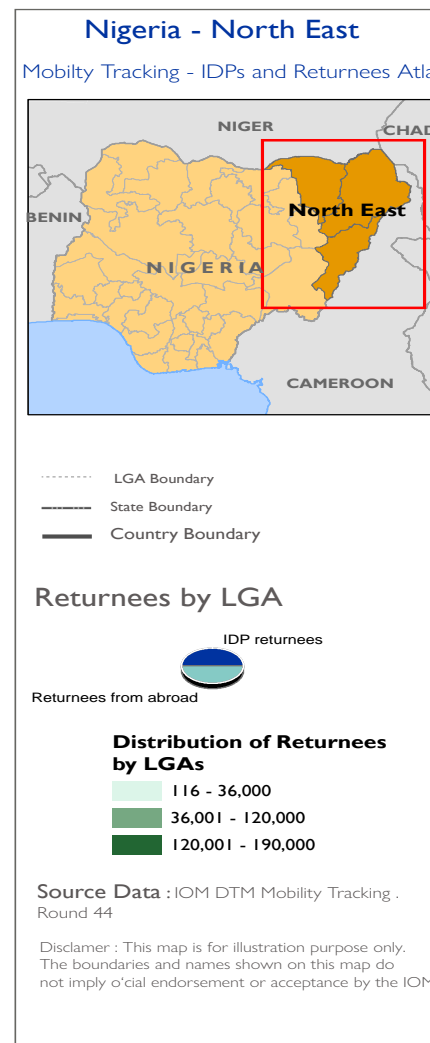
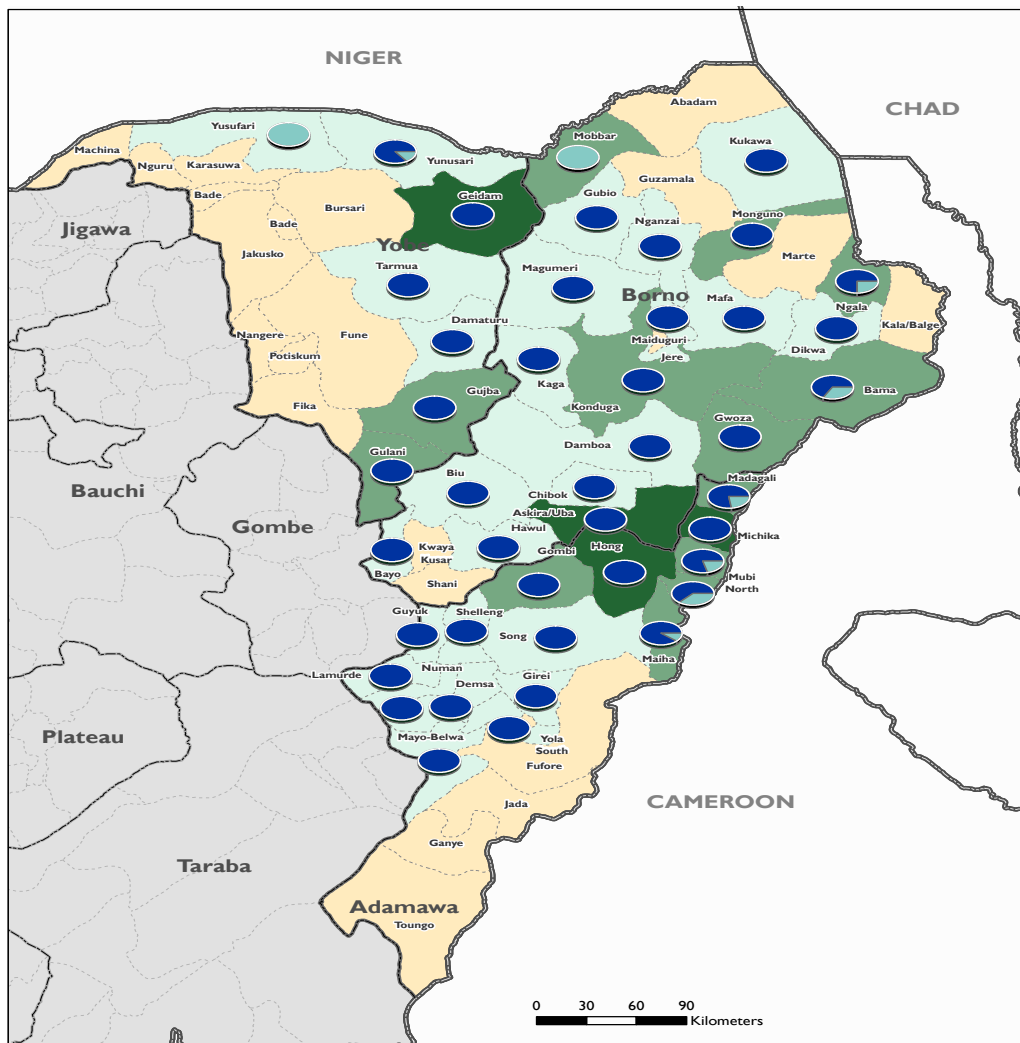


Eighty-four per cent of the IDPs in north-east Nigeria originate from locations in Borno State.



RETURNEES PER LGA AS OF FEBRUARY 2023

A total of 2,110,039 returnees were identified as of February 2023 in north-east Nigeria. In contrary to previous rounds, the state of Borno hosted the most significant number of returnees with 904,185 individuals (43% of returnees). Adamawa State hosted 850,535 returnees (40% of returnees) and in Yobe, 355,319 returnees were recorded (17% of returnees).



The returnee population of north-east Nigeria consisted of 1,887,995 returnees (89%) who returned from locations within Nigeria and 222,044 returnees (11%) who returned from abroad.

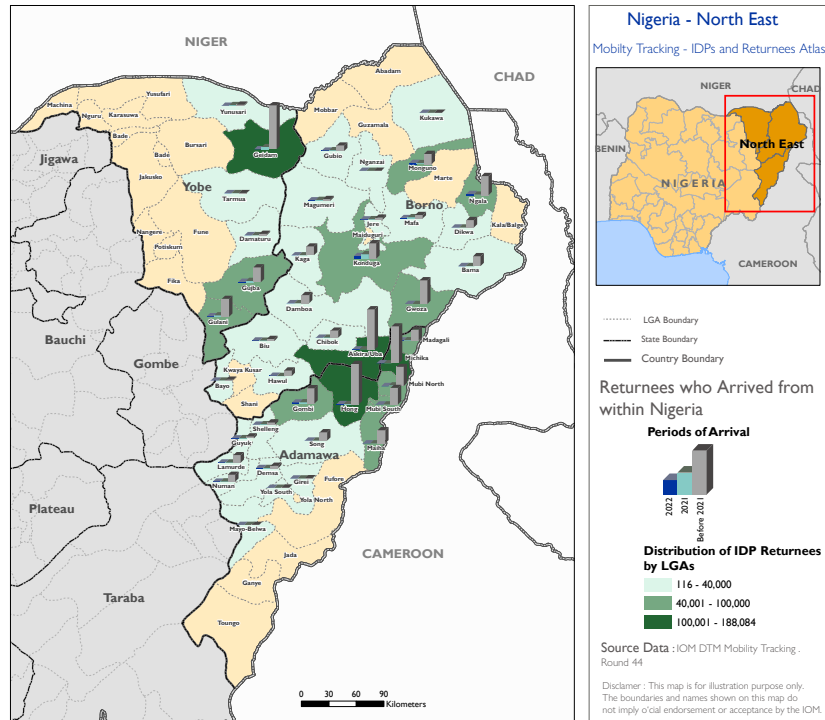
Top 10 LGAs hosting the highest number of returnees

LGA	State	Number of returnees
Geidam	Yobe	188,084
Askira/Uba	Borno	165,808
Hong	Adamawa	165,479
Michika	Adamawa	150,481
Ngala	Borno	112,033
Mubi South	Adamawa	110,415
Mubi North	Adamawa	102,233
Gwoza	Borno	96,917
Konduga	Borno	90,641
Mobbar	Borno	88,650

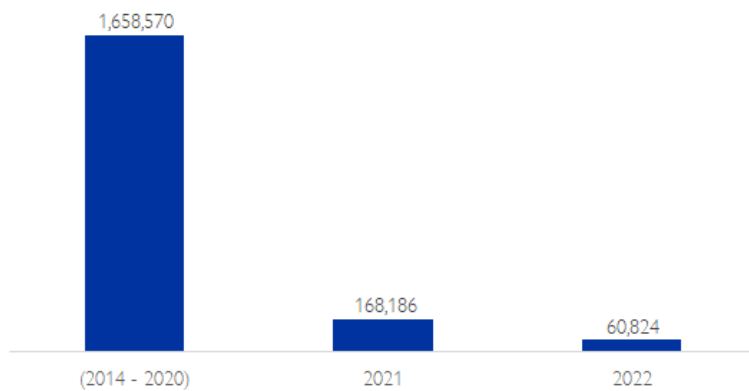


IDP RETURNEES VS. RETURNEES FROM ABROAD

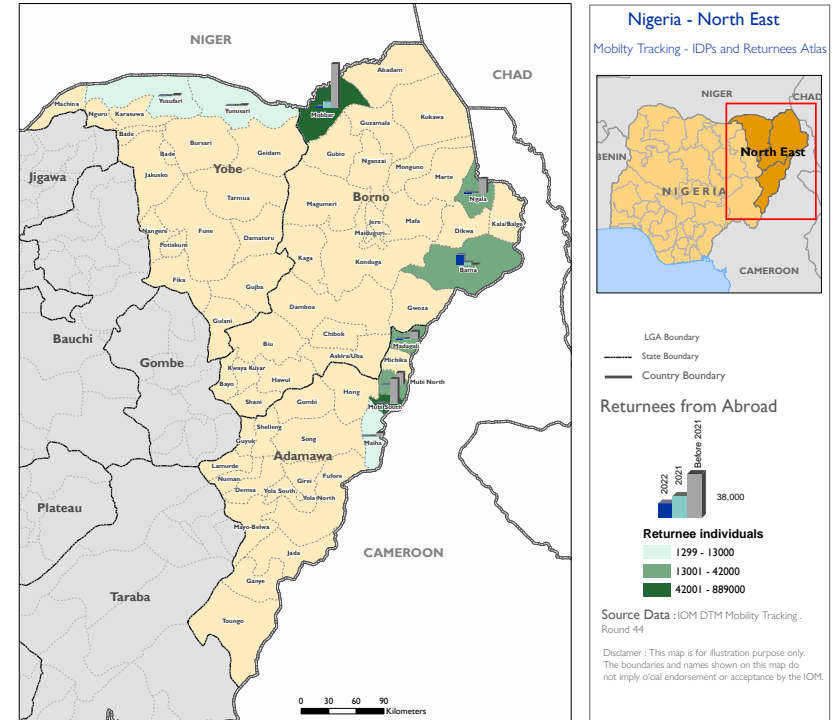
IDP returnees



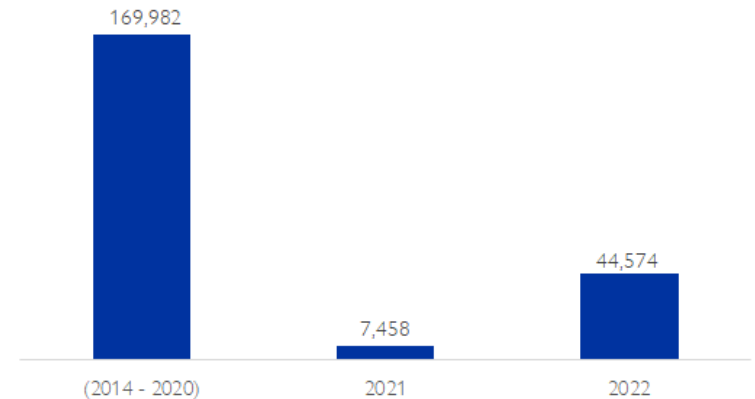
IDP returnees per period of return as of February 2023



Returnees from abroad



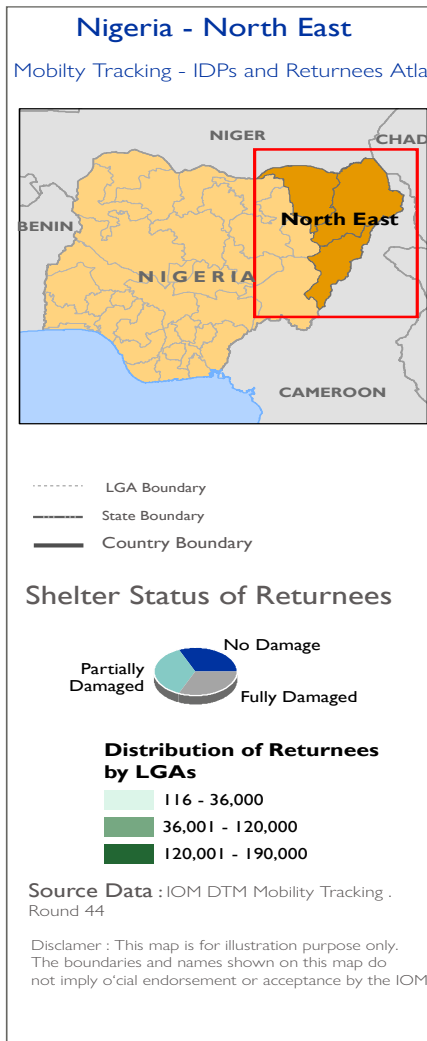
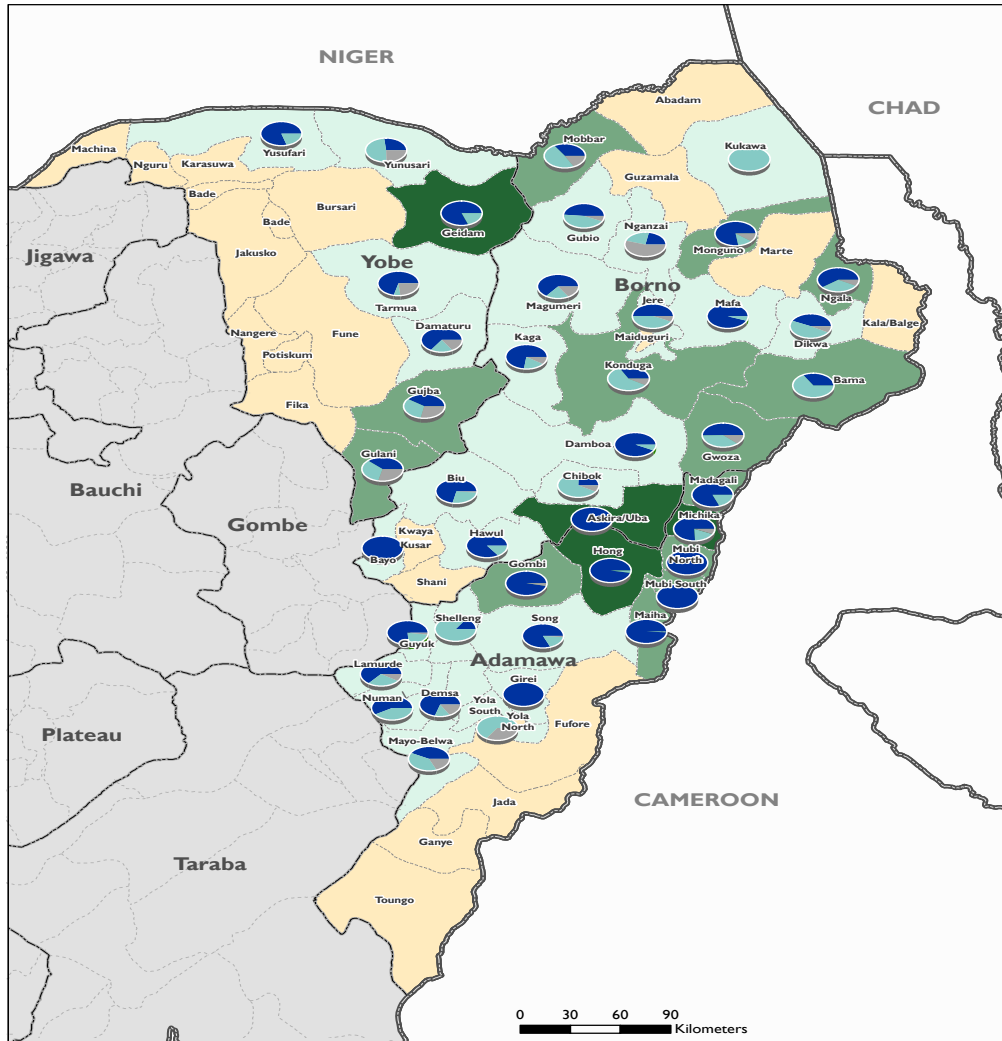
Returnees from abroad per period of return as of February 2023



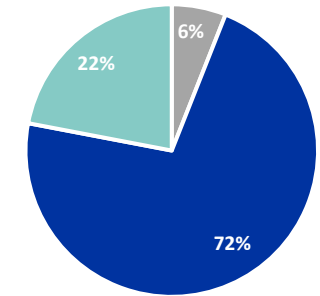


SHELTER STATUS OF RETURNEES

An estimated six per cent of returnees in north-east Nigeria live in fully damaged shelters. An estimated 22 per cent of returnees live in partially damaged shelters and 72 per cent of returnees live in shelters with no damage. It is to be noted that the percentage of shelters without damage is considerably higher in the State of Adamawa, compared to the States of Borno and Yobe.

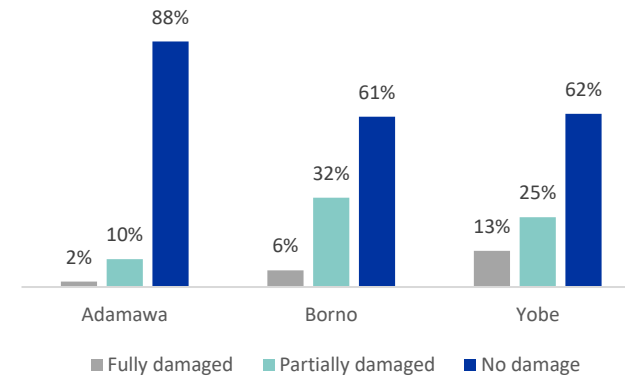


Shelter status for returnees



■ Fully damaged ■ No damage ■ Partially damaged

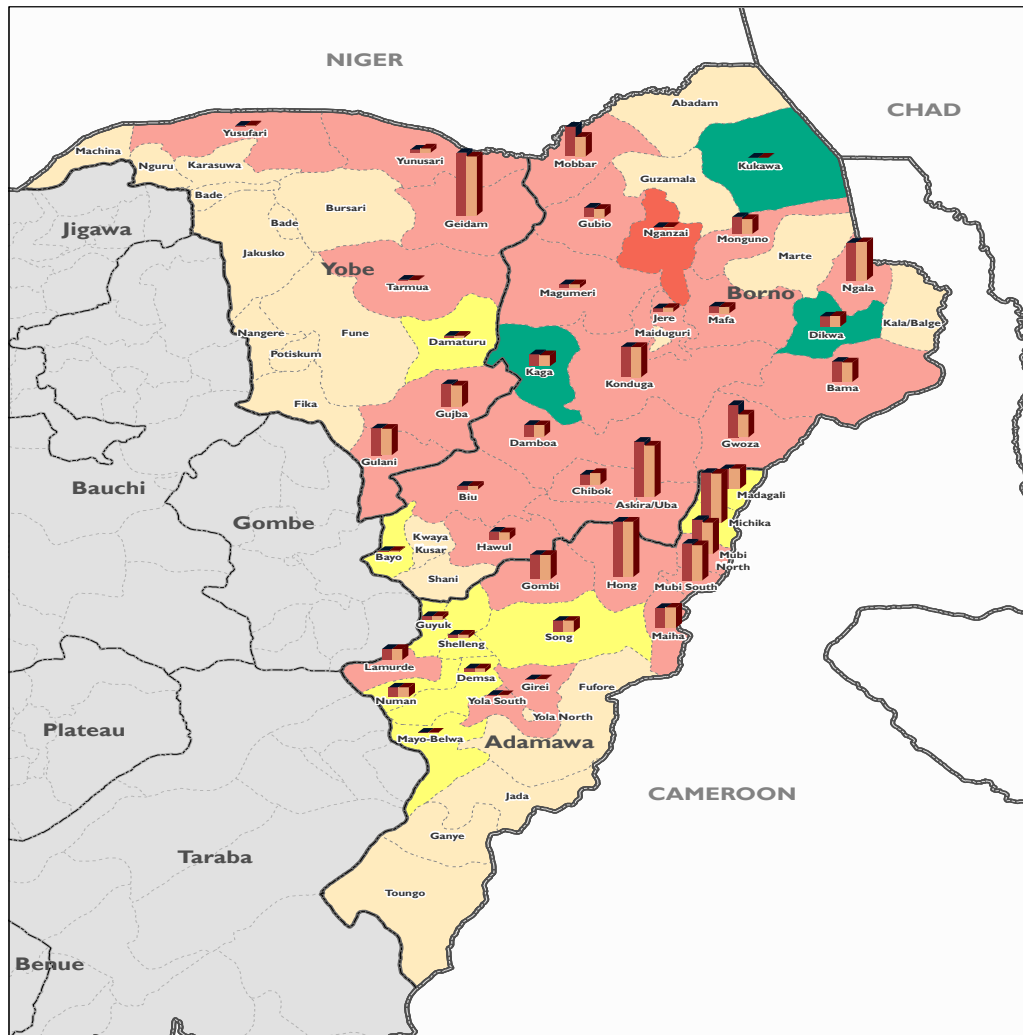
Shelter status for returnees per state





RETURNEE COMPARISON AT LGA LEVEL (OCTOBER 2022 - FEBRUARY 2023)

The map below compares returnee numbers from October 2022 with returnee numbers from February 2023 at the LGA level. In the majority of the LGAs, increasing returnee numbers were reported. Only in three LGAs (Kaga, Kukawa and Dikwa), decreasing returnee numbers were recorded.



Nigeria - North East

Mobility Tracking - IDPs and Returnees Atlas

- LGA Boundary
- State Boundary
- Country Boundary

Changes in the Number of Returnees Compared to Round - 43

Returnee Changes (R 44 and R 43)

- Green: Decrease
- Red: Increase
- Yellow: No change
- Orange: Newly assessed LGA

Source Data : IOM DTM Mobility Tracking . Round 44

Disclaimer : This map is for illustration purpose only. The boundaries and names shown on this map do not imply o'cial endorsement or acceptance by the IOM.

LGAs with the largest increase of returnee individuals

LGA	State	Returnee increase
Mobbar	Borno	12,375
Bama	Borno	2,914
Gulani	Yobe	1,507
Hawul	Borno	1,494
Jere	Borno	1,274
Gujba	Yobe	1,085
Mafa	Borno	795
Gubio	Borno	716
Askira/Uba	Borno	656
Gombi	Adamawa	541

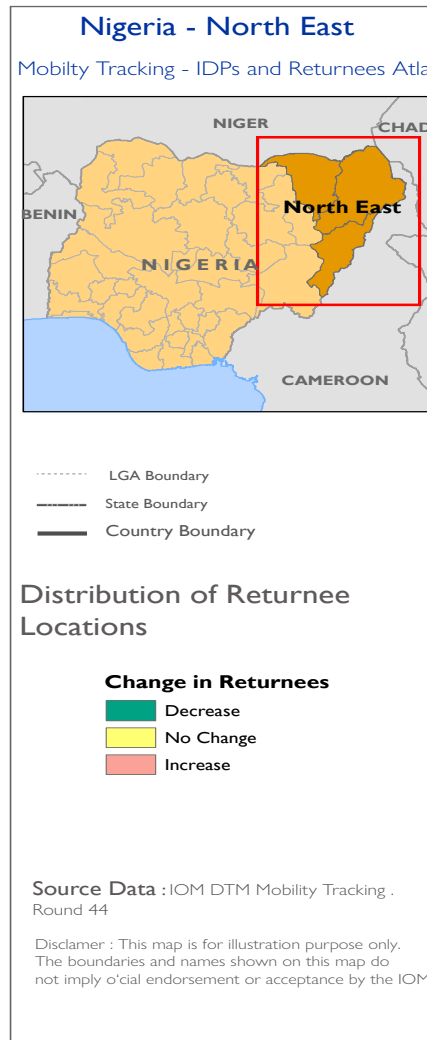
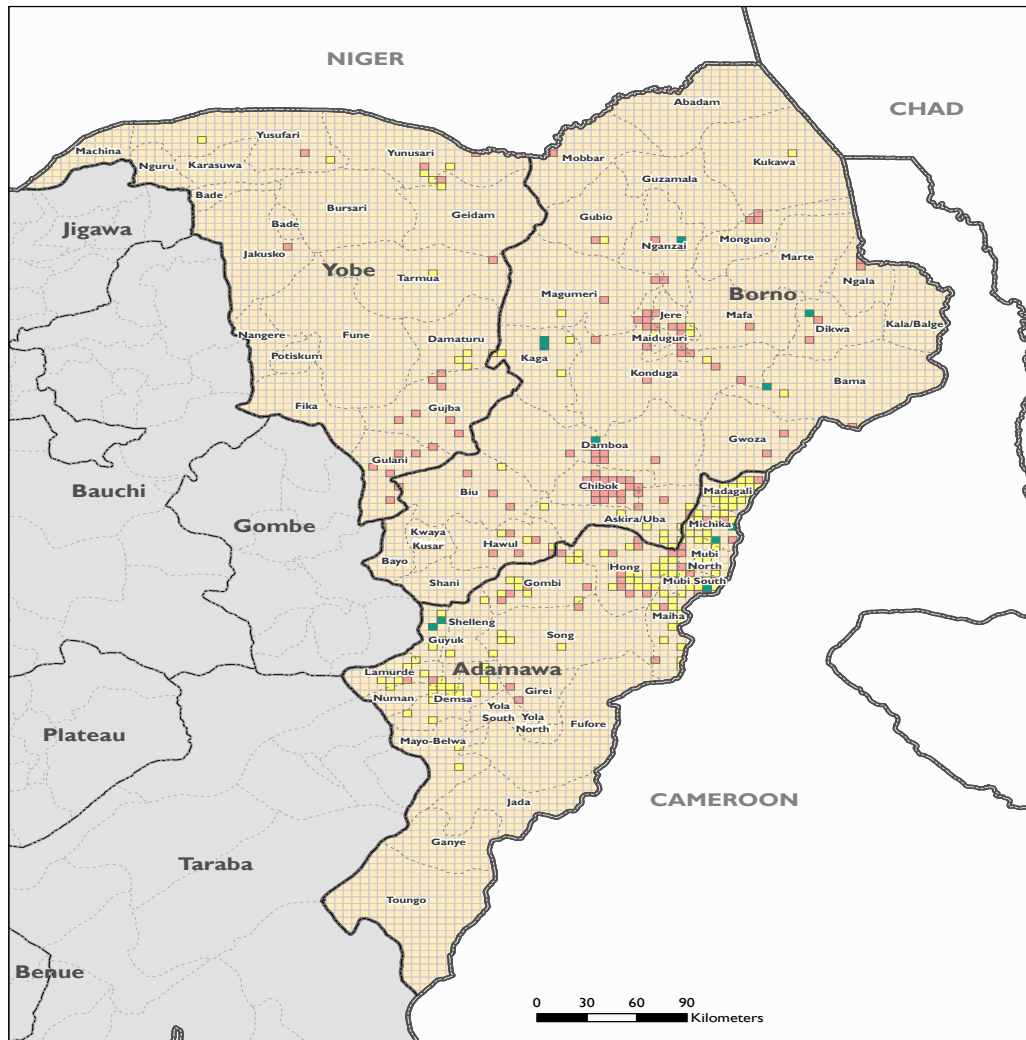
Returnee comparison at state level

State	October 2022	February 2023
Adamawa	849,217	850,535
Borno	898,942	904,185
Yobe	352,021	355,319
Total	2,100,180	2,110,039



RETURNEE COMPARISON AT LOCATION LEVEL (OCTOBER 2022 - FEBRUARY 2023)

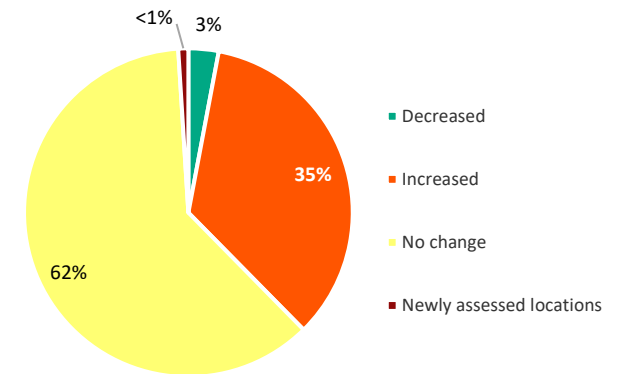
The map below compares returnee numbers from October 2022 with returnee numbers from February 2023 at the locality level. In 52 per cent of the return locations, no changes in returnee numbers were recorded. In 41 per cent of the return locations, the returnee numbers increased. Additionally, four new return locations were identified during the assessment in February 2023.



Newly identified return locations as of February 23

State	LGA	Locality	Returnees
Borno	Mobbar	Bayan Secreteriat	445
Yobe	Yusufari	Harande	132
Borno	Jere	Kolori Village	528
Borno	Mobbar	Massa Kale	291

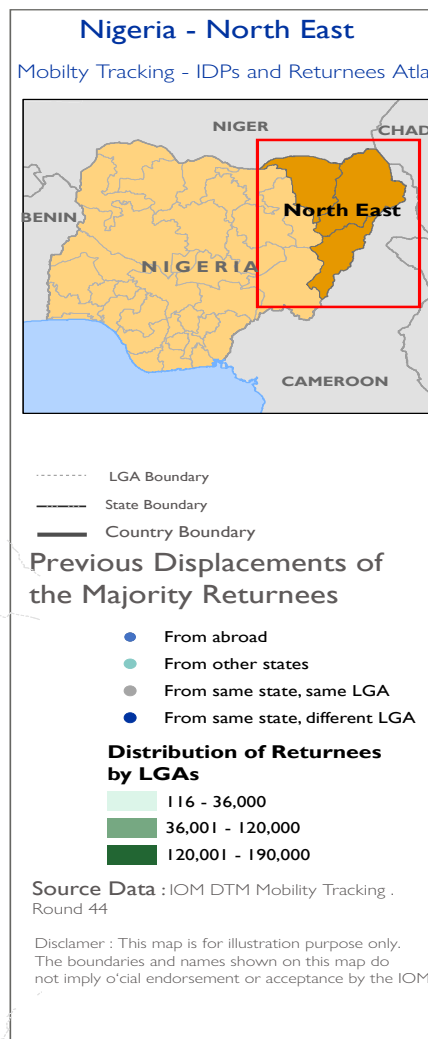
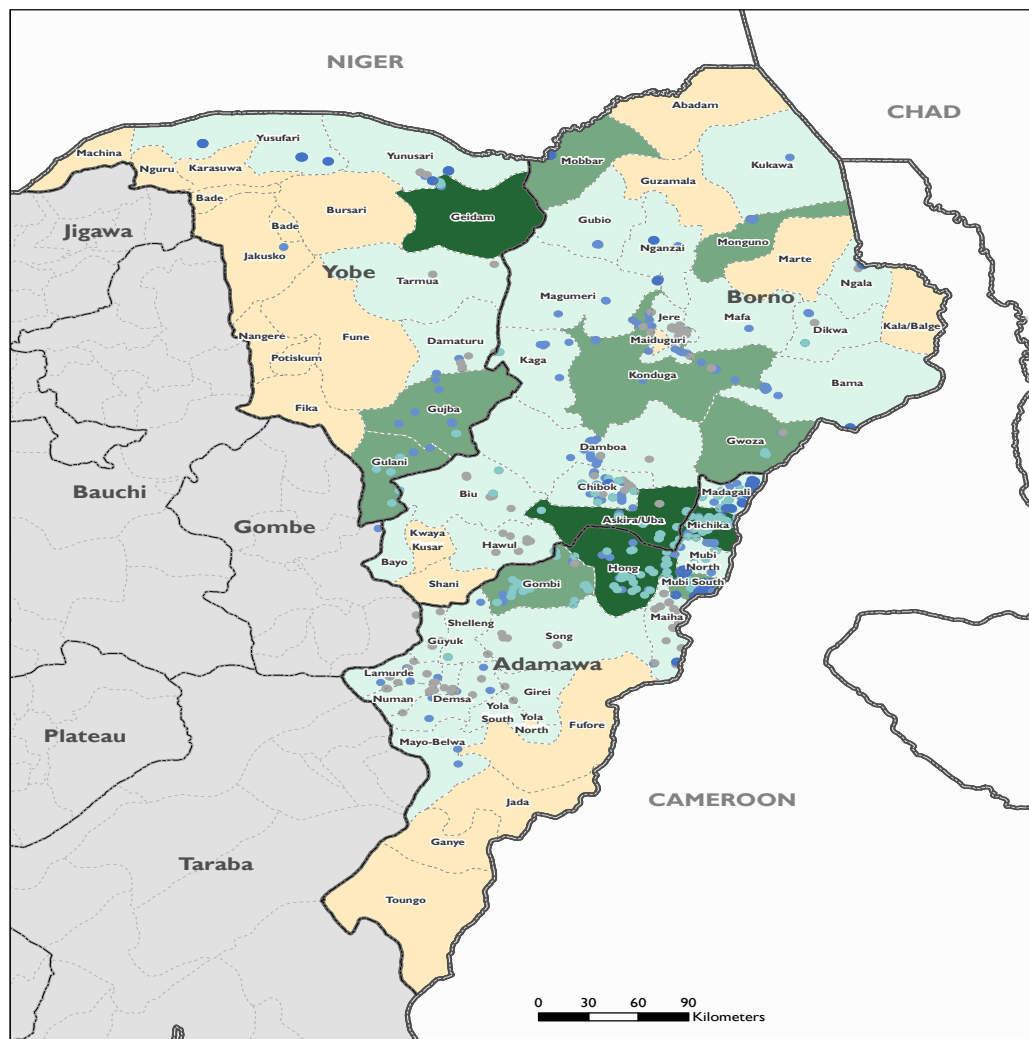
Percentage of locations and change in returnee numbers



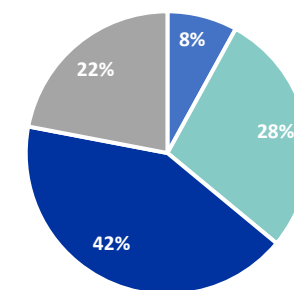


RETURNEES PER LOCATION OF PREVIOUS DISPLACEMENT

The map below indicates where the majority of returnees in a return location are returning from. In 42 per cent of the return locations, the majority of returnees returned from a different LGA within their state of origin. In 28 per cent of return locations, the majority of returnees returned from another state.

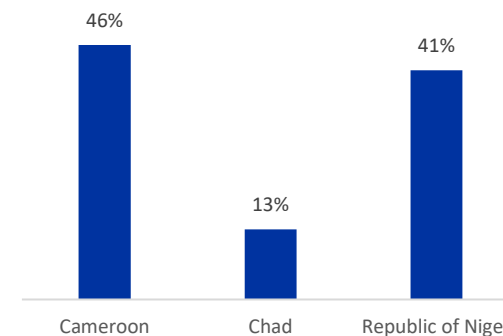


Percentage of returnees per location of displacement



- From abroad
- From another state
- From the same state, different LGA
- From the same state, same LGA

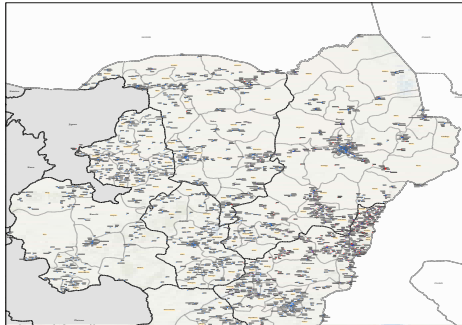
Country of displacement for returnees who returned from abroad (222,044 individuals)



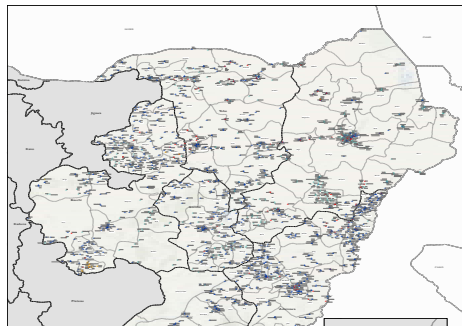
ADDITIONAL MAPS

Click on the state names to access state level maps on IDP and returnee locations

Returnee and IDP locations A0



IDP comparison at location level A0



Returnee comparison at location level A0

