

DISPLACEMENT TRACKING MATRIX — NIGERIA EMERGENCY TRACKING TOOL (ETT)

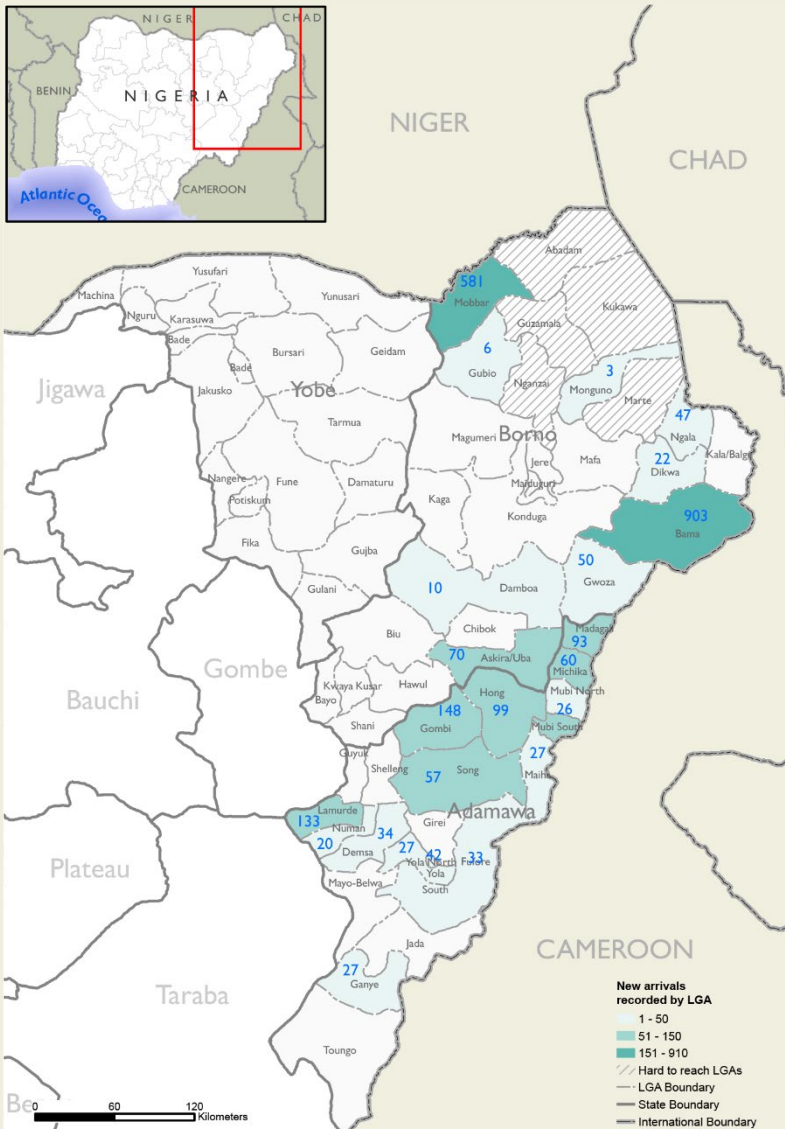
SUMMARY OF MOVEMENTS IN BORNO AND ADAMAWA STATES, 15 – 21 July 2024

DASHBOARD: 389

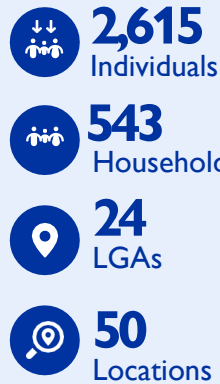
DATA COLLECTION: Week 28, 2024

DATE OF PUBLICATION: 26 July 2024

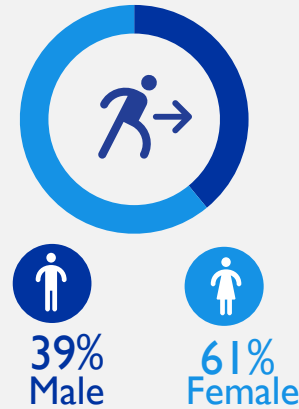
OVERVIEW OF DISPLACEMENTS



KEY FIGURES



GENDER BREAKDOWN



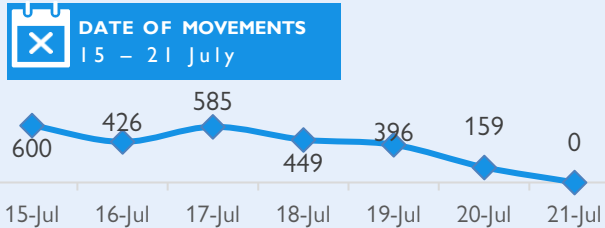
METHODOLOGY

The DTM Emergency Tracking Tool (ETT) is deployed to track and collect information on large and sudden population movements, provide frequent updates on the scale of displacement and quantify the affected population when needed. As a sub-component of the mobility tracking methodology in Nigeria, ETT utilizes direct observations and a broad network of key informants to capture the best estimates of the affected population per location, enabling targeted humanitarian response planning.

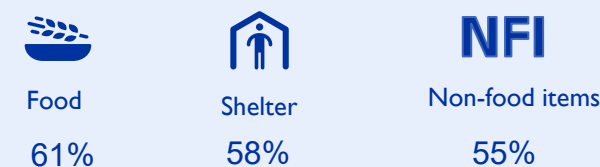
LIMITATIONS

The ETT figures reported are not cumulative of all the affected persons thus far but rather provide a snapshot of the current displacement situation on the date indicated. The data and information reported on this dashboard are related solely to the movements caused by the triggers on page two between 15 – 21 July.

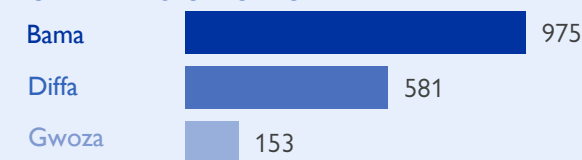
DISPLACEMENT EVOLUTION



TOP REPORTED NEEDS*



TOP AREAS OF ORIGIN



ALERT SUMMARY

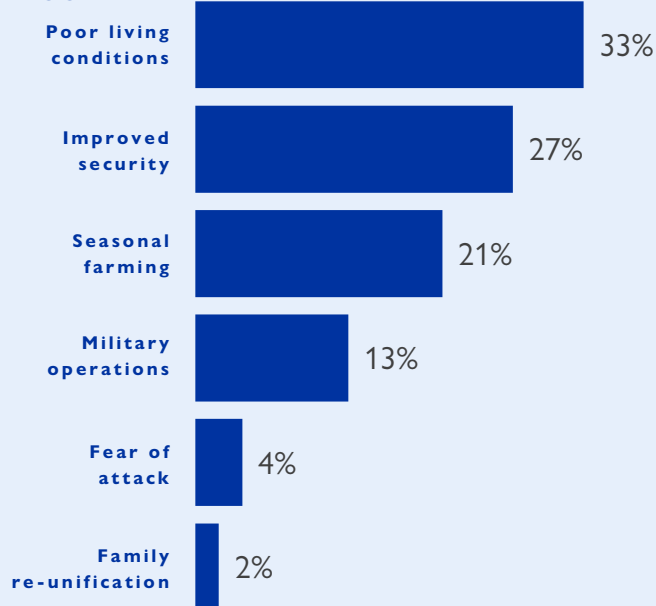
Between 15 and 21 July 2024, a total of 2,615 new arrivals were recorded at locations in Adamawa and Borno states. The new arrivals were recorded at locations in Askira/Uba, Bama, Damboa, Dikwa, Gubio, Gwoza, Mobbar, Monguno and Ngala Local Government Areas (LGAs) of the most conflict-affected Borno State, and in Demsa, Fufore, Ganye, Gombi, Hong, Lamurde, Madagali, Maiha, Michika, Mubi North, Mubi South, Numan, Song, Yola North and Yola South LGAs of Adamawa State.

ETT assessments identified the following movement triggers: poor living conditions (867 individuals or 33%), improved security (711 individuals or 27%), seasonal farming (530 individuals or 21%), military operation (348 individuals or 13%), fear of attack (103 individuals or 4%) and family re-unification (56 individuals or 2%).

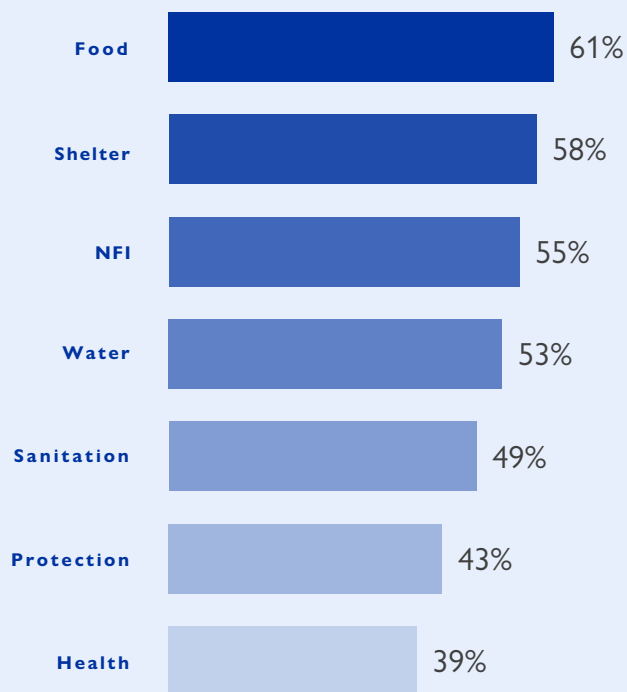
This map is for illustration purposes only. Names and boundaries on this map do not imply official endorsement or acceptance by IOM.

*Multiple-choice response

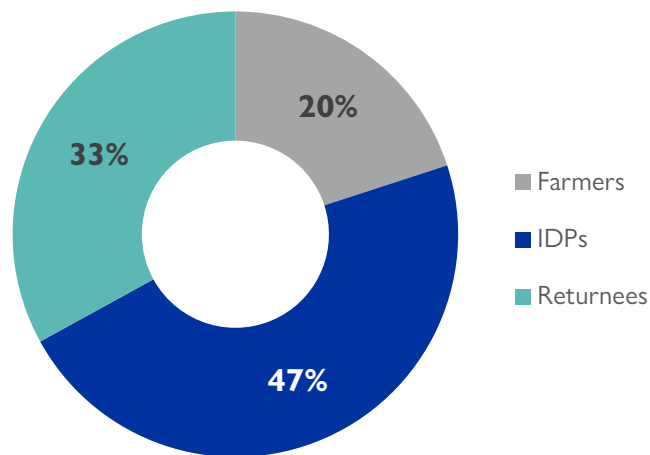
PERCENTAGE OF INDIVIDUALS BY MOVEMENT TRIGGER



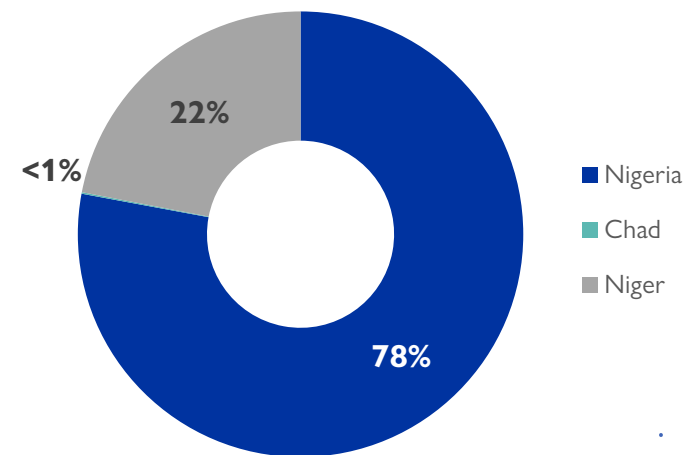
NEEDS EVOLUTION*



ARRIVING POPULATION



COUNTRY OF DEPARTURE OF THE POPULATION



NEW ARRIVALS SCREENING BY NUTRITION PARTNERS



439 MUAC

Children (6 – 59 months)
Screened for malnutrition.
Category of screened children.

Green: 292

Yellow: 76

Red: 71

MALNUTRITION SCREENING SUMMARY OF THE NEW ARRIVALS (CHILDREN 6 – 59 MONTHS)

Between 15 and 21 July 2024, an exhaustive nutrition screening using Mid-Upper Arm Circumference (MUAC) and oedema for acute malnutrition was conducted by sector partners for 439 children aged 6-59 months. Of the 439 children screened, the MUAC reading indicated that 71 were recorded in the red category, 76 in the yellow category and 292 in the green category. No case of oedema was reported in the six LGAs assessed.

Among the 439 children screened, 63 arrived from neighbouring countries (63 in Mobbar LGA); of all the 63 children measured; 57 were in green, five were in yellow and one in the red category. All children found with acute malnutrition have been admitted to the treatment programme.

LGA	MUAC Categories						Total
	Green ($\geq 12.5\text{cm}$)		Yellow (11.5cm – 12.5cm)		Red ($< 11.5\text{cm}$)		
	Inaccessible	Accessible	Inaccessible	Accessible	Inaccessible	Accessible	
Bama	209	0	62	0	60	0	331
Dikwa	4	0	3	0	5	0	12
Gwoza	10	0	3	0	1	0	14
Mobbar	0	57	0	5	0	1	63
Monguno	2	0	0	0	0	0	2
Ngala	10	0	3	0	4	0	17
Total	235	57	71	5	70	1	439

Please note, the data presented above are not surveillance results and should be interpreted with caution.

■ Nourished

■ Moderate Acute Malnutrition (MAM)

■ Severe Acute Malnutrition (SAM)

*Multiple-choice response

DISPLACEMENT BREAKDOWN – only the movements with 14 persons and above are listed below.

State	Arrival location		Movement location			Number of individuals
	LGA	Ward	State	LGA	Ward	
Adamawa	Demsa	Dong	Adamawa	Numan	Numan I	34
	Fufore	Pariya	Borno	Gwoza	Gwoza Wakane/Bulabulin	18
		Ribadu	Adamawa	Madagali	Pallam	15
	Ganye	Sangasumi	Adamawa	Michika	Bazza Margi	27
	Gombi	Garkida	Adamawa	Song	Song Waje	30
			Borno	Hawul	Kwajaffa/Hang	50
		Guyaku	Adamawa	Demsa	Demsa	51
	Hong	Bangshika	Adamawa	Song	Song Gari	35
			Borno	Askira/Uba	Mussa	22
		Uba	Adamawa	Yola South	Bole Yolde Pate	42
	Lamurde	Lafiya	Adamawa	Shelleng	Shelleng	40
		Suwa	Gombe	Kaltungo	Ture	58
	Madagali	Babel	Adamawa	Lamurde	Lafiya	35
			Borno	Gwoza	Guduf Nagadiyo	21
			Borno	Gwoza	Dure/Wala/Warabe	23
			Borno	Gwoza	Bitar/Izge	32
	Maiha	Maiha Gari	Adamawa	Askira/Uba	Husara/Tampul	17
			Adamawa	Maiha	Konkol	14
	Michika	Sukumu/Tillijo	Adamawa	Fufore	Gurin	26
		Tumbara/Ngabili	Adamawa	Maiha	Tambajam	24
	Mubi North	Sabon Layi	Plateau	Mangu	Mangu I	17
	Mubi South	Gude	Borno	Gwoza	Gwoza Wakane/Bulabulin	26
		Mugulbu/Yadafa	Borno	Bama	Buduwa/Bula Chirabe	21
	Numan	Mujara	Adamawa	Madagali	Hyambula	37
		Imburu	Adamawa	Yola South	Ngurore	20
	Song	Song Gari	Adamawa	Fufore	Pariya	20
		Song Waje	Adamawa	Madagali	Duhu/Shuwa	15
				Michika	Michika I	22
	Yola South	Mbamba	Adamawa	Madagali	Shelmi/Sukur/Vapura	14
	Borno	Askira/Uba	Mussa	Adamawa	Hong	Kwarhi
Bama		Buduwa/Bula Chirabe	Borno	Bama	Andara/Ajiri/Wulba	612
		Shehuri/Hausari/Mairi	Borno	Bama	Gulumba/Jukkuri/Batra	122
					Lawanti/Malam/Mastari/Abbaram	146
Dikwa		Dikwa	Borno	Dikwa	Boboshe	22
Mobbar		Damasak	Niger Republic	Diffa	Diffa	581
Ngala		Ngala	Borno	Bama	Mbuliya/Goniri/Siraja	17
	Marte			Kirenowa	30	