

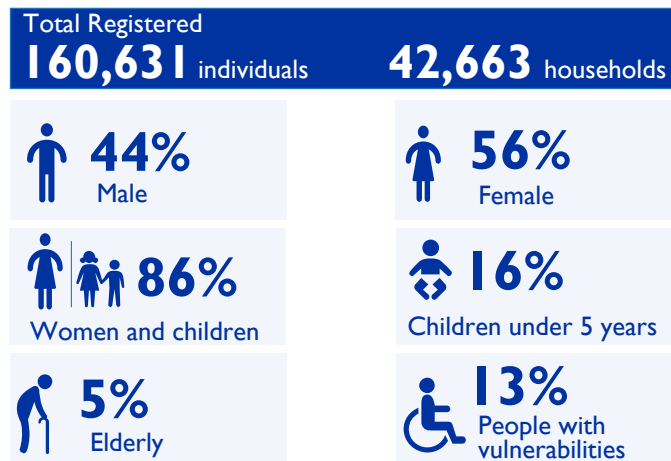
**OVERVIEW**

The biometric registration provides an in-depth data on internally displaced persons (IDPs) which help analyze their specific needs and vulnerabilities. Displacement Tracking Matrix (DTM)-developed Biometric Registration and Verification Application (BRaVe) system captures the biometric data, that provides information on the individuals, households, vulnerability, and displacement-related triggers for programming and response over time.

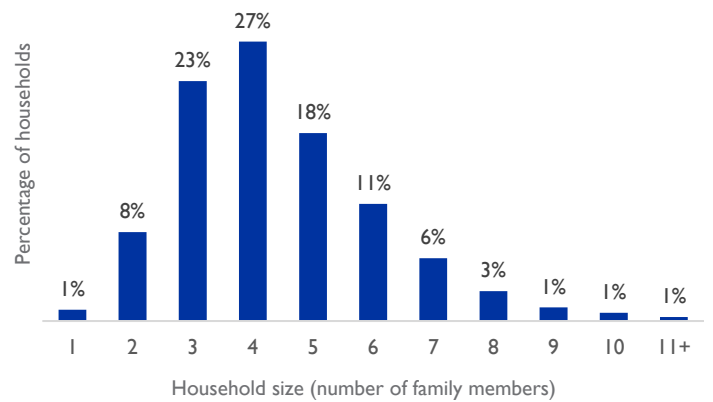
As part of the commitment to provide verified figures of IDPs in Benue State in line with the government's plans, the International Organization for Migration DTM, in partnership with UNHCR, Benue State Emergency Management Agency (BSEMA), Nigeria Red Cross Society (NRCS), National Commission for Refugees, Migrants and Internally Displaced Persons (NCFRMI), National Bureau of Statistics (NBS), National Emergency Management Agency (NEMA), Community Links and Human Empowerment Initiative and the Foundation for Justice Development and Peace (FJDP) launched the biometric registration in Benue State on 22 August 2023 following a three-day training.

There are 500,182 number of IDPs in Benue State as a result of the farmers-herders conflict, which has been ongoing for decades. The biometric registration exercise is to assist the government and humanitarian actors in designing appropriate solutions using a protection centered approach by (1) registering all displaced persons in the selected LGAs in Benue State, (2) referring persons with disabilities, persons with specific needs and health concerns, and (3) verifying numbers of displaced persons in the selected LGAs of Benue State.

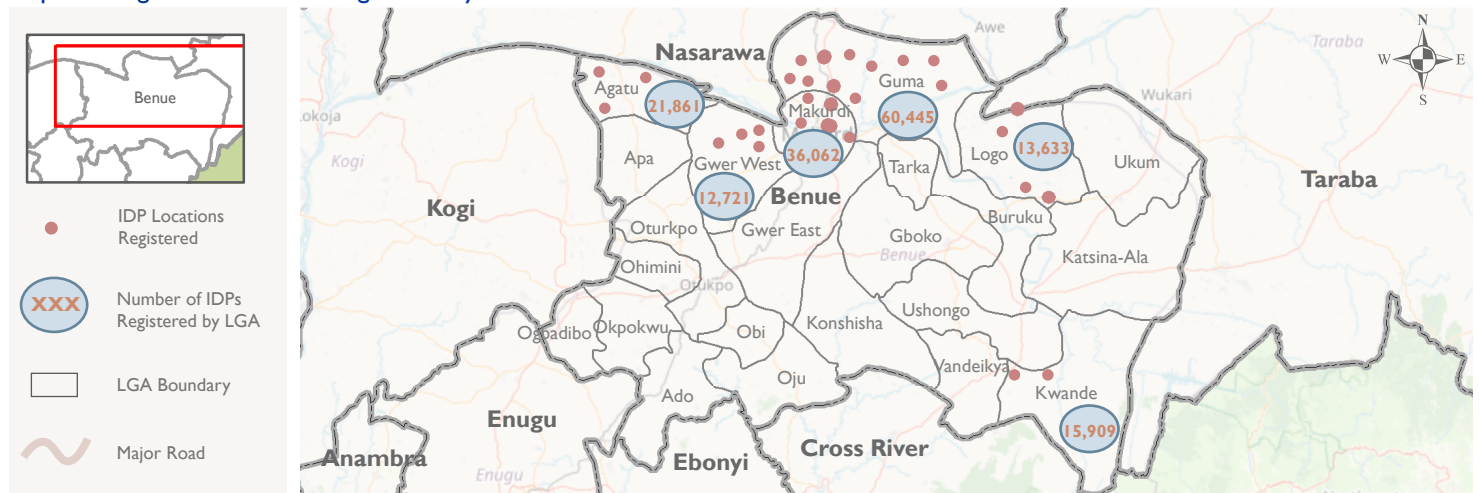
Six LGAs have been mapped as locations with IDPs in Benue State based on DTM Round 11 (March 2023). So far, the biometrically registered IDPs have covered the location of Makurdi LGA (16 camps and three host community sites), Guma LGA (eight camps and four host community sites), Logo LGA (two camps and host community sites), Kwande (one camp and host community site) Agatu LGA (three host community sites) and in Gwer West (four camps). The registration has shown that Guma LGA has the highest number of IDPs, with 60,445 individuals (17,636 households), followed by Makurdi with 36,062 individuals (9,415 households), then Agatu with 21,861 individuals (5,641 households). Kwande had 15,909 individuals (3,225 households), while Logo had 13,633 individuals (3,311 households). Gwer west which had the least registered IDPs had 12,721 individuals registered from 3,435 households. During the registration, 20,044 individuals were identified with vulnerabilities and specific needs (including but not limited to serious medical illness) and were referred to UNHCR/FJDP for further support. All registered IDPs have received a biometric card with a unique number for easy identification. The registration is an ongoing process as this report is the fourth in this series.



**Fig 1. Household size distribution**



**Map showing number of IDPs registered by LGA**



Base Map Source: © Open Street Map (and) contributors, CC-BY-SA. DTM biometric registration.

The maps in this report are for illustration purposes only. The depiction and use of boundaries, geographic names, related data shown on maps and included in this report are not warranted to be error free nor do they imply judgement on the legal status of any territory, or any endorsement or acceptance of such boundaries by IOM.

Table I. Registered population by age and gender

State	LGA	Ward	Location Details			Total				Male				Female			
			SSID	Place of registration	Location type	HH	IND	Male	Female	0-4y	5-17y	18-59y	60+ y	0-4 y	5-17 y	18-59 y	60+ y
Benue	Agatu	Egba	BN_H049	Aila_Hc	Camp	1,815	6,713	3,101	3,612	487	1,261	1,210	143	537	1,090	1,831	154
		Obagaji	BN_H141	Obagaji_Hc	Camp	2,153	8,140	3,567	4,573	555	1,702	1,174	136	595	1,632	2,158	188
		Usha	BN_S037	Usha_Hc	Camp	1,673	7,008	3,290	3,718	545	1,526	1,115	104	531	1,274	1,779	134
	Mbabai	BN_S068	Uikpam_Idp_Hc	Host community	861	2,949	1,363	1,586	282	572	461	48	270	471	766	79	
		BN_S072	Uikpam_Idp_Camp	Camp	834	3,342	1,568	1,774	268	794	450	56	252	661	731	130	
		BN_H253	Daudu_Hc	Host community	2,443	8,621	3,705	4,916	823	1,750	1,013	119	800	1,653	2,187	276	
	Mbawa	BN_S025	Daudu_I_Idp_Camp	Camp	899	3,139	1,409	1,730	236	728	398	47	227	586	777	140	
		BN_S253	Daudu_Camp_2	Camp	2,369	8,670	3,580	5,090	648	2,203	645	84	677	1,981	2,050	382	
		BN_HC1905	Ukohol_Hc	Camp	223	730	349	381	84	125	119	21	74	111	179	17	
	Nyiev	BN_S064	Ortese Camp	Camp	4,219	13,543	5,358	8,185	1,172	2,977	1,057	152	1,158	2,777	3,653	597	
		BN_S064	Ortese_Host_Community	Host community	960	3,145	1,288	1,857	287	623	332	46	235	645	849	128	
		BN_S023	Gbajimba_Camp_1	Camp	241	632	255	377	60	111	76	8	81	76	190	30	
	Nzorov	BN_S023	Gbajimba_Hc_Idp	Host community	4,202	14,627	6,343	8,284	1,574	2,941	1,643	185	1,476	2,559	3,859	390	
		BN_S065	Gbajimba_Camp_2	Camp	385	1,047	388	659	101	211	71	5	97	208	285	69	
		BN_S022	Naka_Idp_Camp	Camp	504	1,988	856	1,132	146	533	143	34	121	500	369	142	
	Ikyaghev	BN_S022	Naka_Idp_Hc	Camp	1,126	4,350	1,904	2,446	282	1,080	429	113	287	967	967	225	
		BN_S067	Agagbe_Idp_Camp	Camp	806	2,959	1,292	1,667	264	629	321	78	239	556	742	130	
		BN_S067	Agagbe_Idp_Hc	Camp	999	3,424	1,535	1,889	296	698	458	83	263	648	860	118	
	Mbachohon	BN_H014	Nyihemba	Host community	1,068	4,930	2,387	2,543	332	1,124	819	112	295	1,019	1,121	108	
		BN_H014	Jato-Aka	Host community	2,157	10,979	5,290	5,688	699	2,596	1,645	350	631	2,342	2,456	259	
		BN_S009	Anyiin_Hc	Host community	973	4,255	2,008	2,247	247	1,086	570	105	231	983	919	114	
	Logo	BN_S009	Nkst Pri. Sch Anyiin_Camp	Camp	1,094	4,351	2,048	2,302	290	1,022	621	115	261	894	1,013	134	
		BN_S014	Lgea Pri. Sch Ugba	Camp	366	1,499	628	871	85	427	103	13	77	398	305	91	
		BN_S014	Ugba_Hc	Host community	878	3,528	1,540	1,988	235	876	393	36	220	858	815	95	
	Kwande	BN_H088	Abagena_Hc	Camp	187	660	286	374	73	135	70	8	63	125	170	16	
		BN_H223	Agan Toll Gate_Hc	Camp	1,306	5,529	2,483	3,046	484	1,234	696	69	514	1,183	1,212	137	
		BN_HC100	Tse Atungu_Hc	Camp	170	784	356	428	70	190	91	5	82	166	163	17	
	Mbaikyor	BN_S021	Abagena Camp	Camp	993	3,025	1,253	1,772	264	630	321	38	262	573	830	107	
		BN_H014	Iniongun/Agboughul_Hc	Camp	418	2,161	1,016	1,145	204	508	271	33	182	487	410	66	
		BN_H	Wadata_Hc	Camp	178	917	419	498	70	204	129	16	62	222	192	22	
	Mbayam	BN_HC023	Tionsha_Hc_Idp	Camp	538	2,530	1,171	1,359	250	556	313	52	220	560	527	52	
		BN_H189	Tule_Hc	Camp	97	445	192	253	49	93	44	6	37	99	109	8	
		BN_SH006	Tyo-Mu_Hc	Camp	125	526	246	280	50	112	77	7	44	101	127	8	
	Ankpa/Wadata	BN	Adaka_Camp	Camp	43	233	112	121	22	54	31	5	23	45	49	4	
		BN_H180	Adaka_Hc	Camp	425	2,011	948	1,063	149	440	323	36	177	432	422	32	
		BN_SH003	Bam Bam_Idp_Hc	Camp	309	1,516	721	795	144	379	175	23	126	329	304	36	
	Bar	BN_H020	Nepa Quarters_Hc	Host community	581	1,972	788	1,184	203	369	198	18	227	362	553	42	
		BN_H072	Baka_Camp_Hc_Idps	Camp	424	1,352	508	844	89	294	111	14	110	307	386	41	
		BN_H073	Asase_Hc_Idps	Host community	419	1,865	784	1,081	145	488	136	15	128	503	421	29	
	Fildi	BN_H073	Ichwa_Hc	Host community	460	1,508	606	902	162	267	168	9	138	282	442	40	
		BN_S020	Nepa Quarters Camp	Camp	491	1,803	728	1,075	132	377	203	16	152	391	484	48	
		BN_S072	Bala Camp	Camp	1,144	3,702	1,447	2,255	291	831	301	24	258	810	1,021	166	
Modern Market	BN_S073	Ichwa_Camp	Camp	1,107	3,523	1,366	2,157	300	704	323	39	279	750	929	199		
	BN_S073	Ichwa_Camp	Camp	1,107	3,523	1,366	2,157	300	704	323	39	279	750	929	199		
	BN_S073	Ichwa_Camp	Camp	1,107	3,523	1,366	2,157	300	704	323	39	279	750	929	199		
Grand Total						42,663	160,631	70,482	90,147	13,149	35,460	19,247	2,626	12,719	32,616	39,612	5,200

Fig 2. Percentage of vulnerability

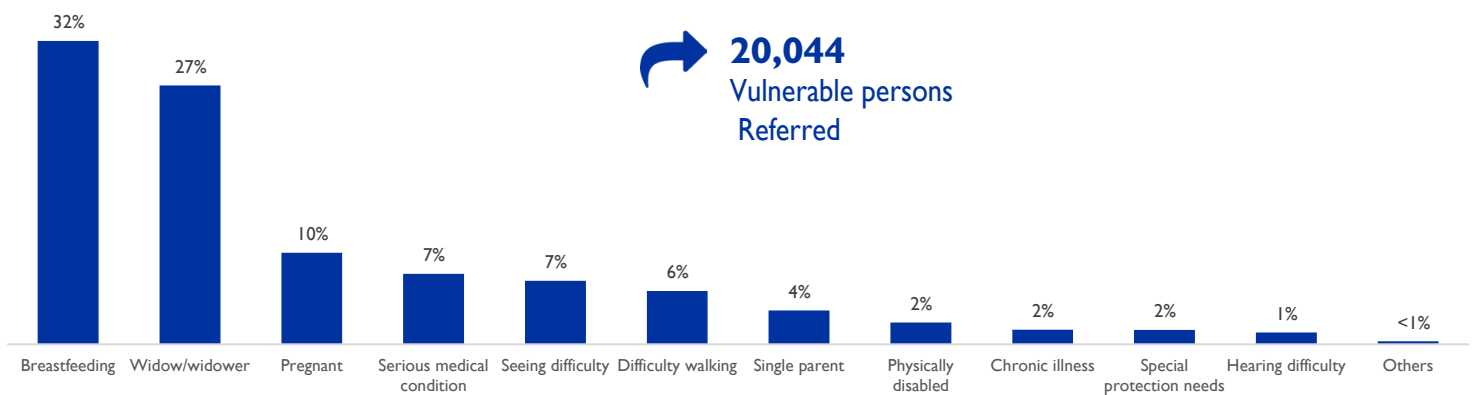


PHOTO GALLERY



The issue of biometric card to a head of household after registration in Obagaji HC in Obagaji Ward, Agatu LGA@IOM-DTM/2023



Biometric registration in Usha Host community, Usha Ward, Agatu LGA @IOM-DTM/2023

**DISCLAIMER:** The figures presented in this report only show progress for the biometrically registered IDPs in selected LGAs in Benue State as of 30 June 2024. The registration is ongoing, and data will keep changing until the end of the exercise.

## UNDER 10 YEARS REGISTRATION

  
**6,638**  
Children registered

  
**7**  
Camps covered

In a remarkable collaborative effort, the international Organization for Migration (IOM) DTM and the National Population Commission (NPC) in Benue State have achieved a significant milestone. This partnership has led to the successful training of 30 NPC staff (18 male and 12 female) to undertake the vital task of registering children under ten years old in Internally Displaced Persons (IDP) camps within Guma and Makurdi LGAs, north-central Nigeria.

The need for this initiative was long overdue, as many children in these IDP camps lacked formal identification, putting them at risk of statelessness. The introduction of birth certificate registration within the camps represents a transformative step toward securing the identities and rights of these children.

This successful registration signifies a major milestone in protecting the identities of children in IDP camps. It highlights the vital role of collaborative efforts in meeting the needs of vulnerable populations, ensuring every child is recognized and granted their fundamental rights. The registration took place across five camps in Guma and Makurdi LGAs, with Ortese camp recording the highest number of registered children (1,086). Daudu 2 camp followed with 1,470 registered children. Baka camp had 1,338 registered children, followed by Ichwa camp with 963, Daudu 1 camp with 811, Uikpam camp with 613, and Nepa camp with 357 registered children.

Fig 3. Demographic breakdown of registered children



Table 2. Registered children by age and gender

Location Details				<1 year		1 - 5 years		6 - 10 Years		Total
State	LGA	Ward	Camp	Male	Female	Male	Female	Male	Female	
Benue	Guma	Nyiev	Ortese Camp	97	82	283	259	189	176	1,086
		Mbabai	Uikpam	51	46	146	116	138	116	613
		Mbawa	Daudu Camp 1	49	70	162	173	182	175	811
	Daudu Camp 2		58	93	384	334	311	290	1,470	
	Makurdi	Agan	Ichwa Camp	42	48	265	243	180	185	963
			Baka Camp	52	43	298	294	326	325	1,338
			Nepa Quarters	13	12	91	94	68	79	357
<b>Grand Total</b>				<b>362</b>	<b>394</b>	<b>1,629</b>	<b>1,513</b>	<b>1,394</b>	<b>1,346</b>	<b>6,638</b>

**DISCLAIMER:** The figures presented in table 2 only show progress for the under 10 years registered IDPs in selected LGAs in Benue State as of 30 June 2024. The registration is ongoing, and data will keep changing until the end of the exercise.