

DISPLACEMENT TRACKING MATRIX — NIGERIA EMERGENCY TRACKING TOOL (ETT)

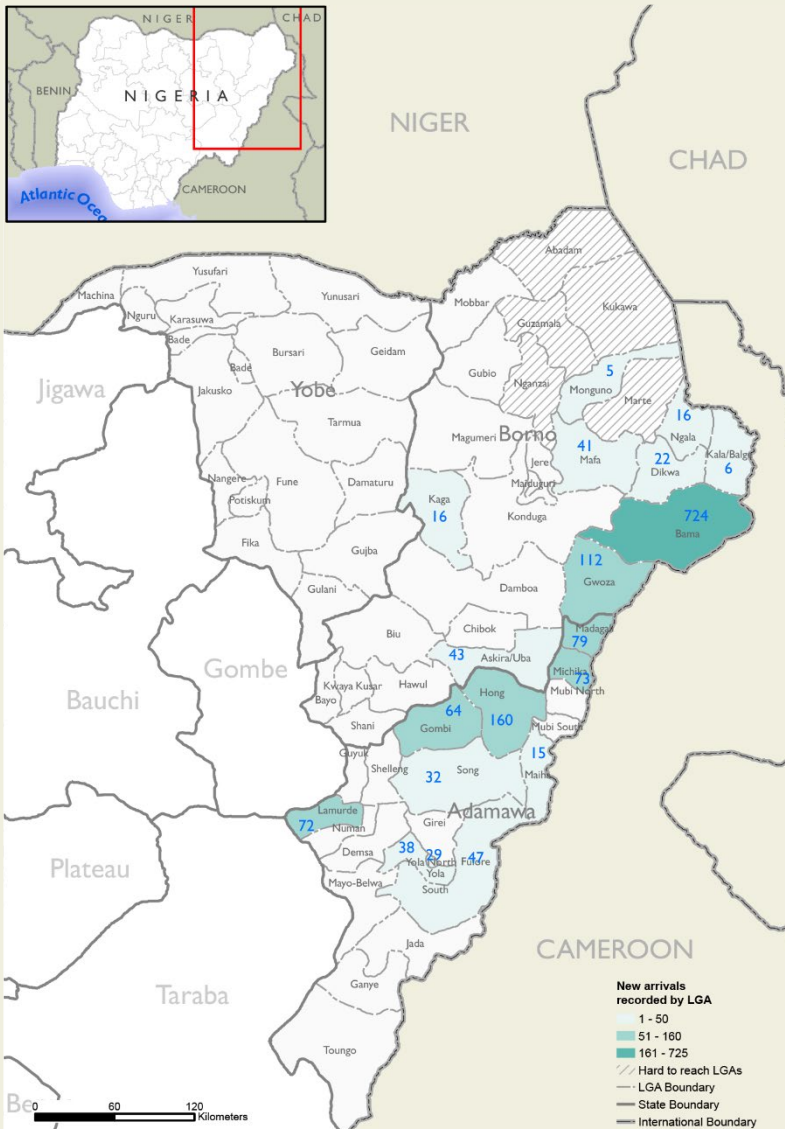
SUMMARY OF MOVEMENTS IN BORNO AND ADAMAWA STATES, 24 – 30 June 2024

DASHBOARD: 386

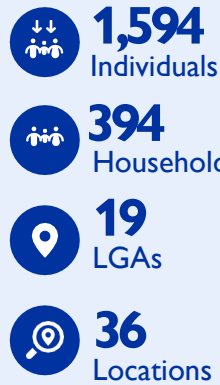
DATA COLLECTION: Week 25, 2024

DATE OF PUBLICATION: 04 July 2024

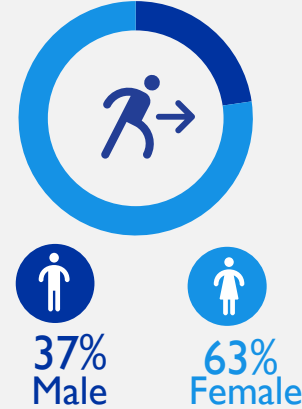
OVERVIEW OF DISPLACEMENTS



KEY FIGURES



GENDER BREAKDOWN



METHODOLOGY

The DTM Emergency Tracking Tool (ETT) is deployed to track and collect information on large and sudden population movements, provide frequent updates on the scale of displacement and quantify the affected population when needed. As a sub-component of the mobility tracking methodology in Nigeria, ETT utilizes direct observations and a broad network of key informants to capture the best estimates of the affected population per location, enabling targeted humanitarian response planning.

LIMITATIONS

The ETT figures reported are not cumulative of all the affected persons thus far but rather provide a snapshot of the current displacement situation on the date indicated. The data and information reported on this dashboard are related solely to the movements caused by the triggers on page two between 24 – 30 June.

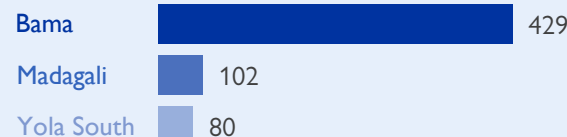
DISPLACEMENT EVOLUTION



TOP REPORTED NEEDS*



TOP AREAS OF ORIGIN



ALERT SUMMARY

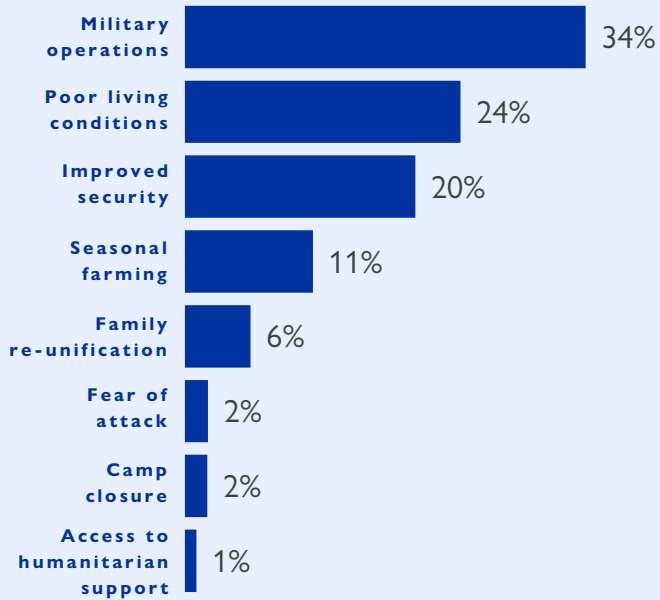
Between 24 and 30 June 2024, a total of 1,594 new arrivals were recorded at locations in Adamawa and Borno states. The new arrivals were recorded at locations in Askira/Uba, Bama, Dikwa, Gwoza, Kaga, Kala Balge, Mafa, Monguno and Ngala Local Government Areas (LGAs) of the most conflict-affected Borno State, and in Fufere, Gombi, Hong, Lamurde, Madagali, Maiha, Michika, Song, Yola North and Yola South LGAs of Adamawa State.

ETT assessments identified the following movement triggers: military operations (548 individuals or 34%), poor living conditions (377 individuals or 24%), improved security (315 individuals or 20%), seasonal farming (175 individuals or 11%), family re-unification (90 individuals or 6%), fear of attack (42 individuals or 2%), camp closure (31 individuals or 2%) and access to humanitarian support (16 individuals or 1%).

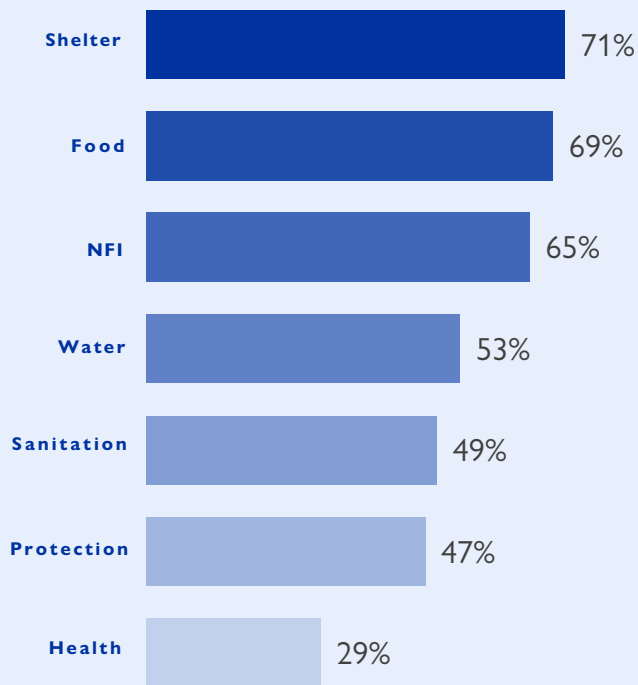
This map is for illustration purposes only. Names and boundaries on this map do not imply official endorsement or acceptance by IOM.

*Multiple-choice response

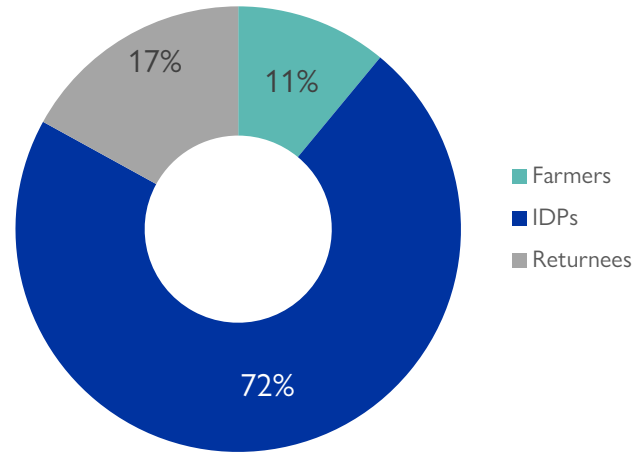
PERCENTAGE OF INDIVIDUALS BY MOVEMENT TRIGGER



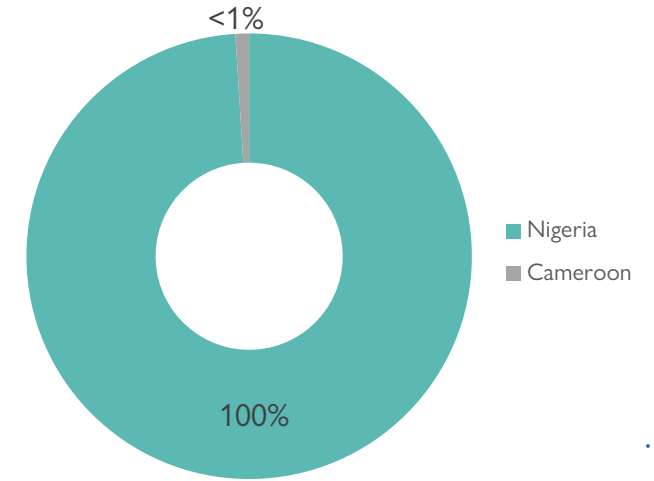
NEEDS EVOLUTION*



ARRIVING POPULATION



COUNTRY OF DEPARTURE OF THE POPULATION



NEW ARRIVALS SCREENING BY NUTRITION PARTNERS



261 MUAC

Green: 191

Yellow: 38

Red: 32

Children (6 – 59 months)
Screened for malnutrition.
Category of screened children.

MALNUTRITION SCREENING SUMMARY OF THE NEW ARRIVALS (CHILDREN 6 – 59 MONTHS)

Between 24 and 30 June 2024, an exhaustive nutrition screening using Mid-Upper Arm Circumference (MUAC) and oedema for acute malnutrition was conducted by sector partners for 261 children aged 6-59 months. Of the 261 children screened, the MUAC reading indicated that 32 were recorded in the red category, 38 in the yellow category and 191 in the green category. No case of oedema was reported in the eight LGAs assessed.

Among the 261 children screened, 63 arrived from neighbouring countries (57 in Mobbar LGA, 2 in Kala Balge LGA and 4 in Gwoza LGA); of all the 63 children measured; 62 were in green, one were in yellow and none in the red category. All children found with acute malnutrition have been admitted to the treatment programme.

LGA	MUAC Categories						Total
	Green (≥12.5cm)		Yellow (11.5cm – 12.5cm)		Red (<11.5cm)		
	Inaccessible	Accessible	Inaccessible	Accessible	Inaccessible	Accessible	
Bama	93	0	28	0	21	0	142
Dikwa	8	0	3	0	2	0	13
Gwoza	19	4	5	0	8	0	36
Kala Balge	0	2	0	0	0	0	2
Mobbar	0	56	0	1	0	0	57
Mafa	3	0	0	0	0	0	3
Monguno	2	0	0	0	0	0	2
Ngala	4	0	1	0	1	0	6
Total	129	62	37	1	32	0	261

Please note, the data presented above are not surveillance results and should be interpreted with caution.

■ Nourished

■ Moderate Acute Malnutrition (MAM)

■ Severe Acute Malnutrition (SAM)

*Multiple-choice response

DISPLACEMENT BREAKDOWN – all movements are listed below.

State	Arrival location		Movement location			Number of individuals	
	LGA	Ward	State	LGA	Ward		
Adamawa	Fufore	Beti	Adamawa	Yola South	Adarawo	23	
		Ribadu			Adarawo	24	
	Gombi	Boga/ Dingai	Adamawa		Song	Dumne	19
		Gombi South			Fufore	Pariya	22
		Tawa			Song	Sigire	23
	Hong	Kwarhi	Adamawa		Gombi	Gombi South	51
		Mayo Lope			Song	Sigire	34
		Shangui			Madagali	Duhu/Shuwa	75
	Lamurde	Lafiya	Gombe		Kaltungo	Ture	30
		Waduku			Balanga	Gelengu/Balanga	42
	Madagali	Babel	Borno		Maiduguri	Mafoni	22
		Madagali			Konduga	Dalori/Wanori	31
	Maiha	Shelmi/Sukur/Vapura	Adamawa		Yola North	Jambutu	26
		Belel	Adamawa		Fufore	Fufore	15
	Michika	Garta/Ghunchi	Adamawa		Michika	Michika li	36
		Michika I			Yola South	Makama A	11
		Minkisi/Wuro Ngiki			Yola South	Bole Yolde Pate	11
		Tumbara/Ngabili			Maiha	Tambajam	15
	Song	Song Waje	Adamawa		Girei	Girei I	21
	Yola North	Jambutu	Adamawa		Yola South	Namtari	11
		Luggere			Mayo – Belwa	Bajama	14
	Yola South	Namtari	Adamawa		Madagali	Gulak	15
					Guyuk	Banjiram	10
Madagali					Duhu/Shuwa	12	
Borno	Askira/Uba	Mussa	Adamawa		Wukari	Rafin Kada	16
		Ngulde	Borno	Askira/Uba	Uba	14	
	Bama	Buduwa/Bula Chirabe	Borno		Bama	Dipchari/Jere/Dar-Jamal/Kotembe	192
		Shehuri/Hausari/Mairi				Lawanti/Malam/Mastari/Abbaram	261
						Mbuliya/Goniri/Siraja	271
	Dikwa	Dikwa	Borno	Dikwa	Boboshe	22	
	Gwoza	Gwoza Wakane/Bulabulin	Borno		Gwoza	Guduf Nagadiyo	11
						Kurana Bassa/Ngoshe - Sama'A	3
	Kaga	Benisheikh	Borno		Bama	Dipchari/Jere/Dar-Jamal/Kotembe	86
					Gwoza	Dure/Wala/Warabe	12
	Kala Balge	Rann	Cameroon		Kaga	Borgozo	16
	Mafa	Mafa	Borno		Marwa	Kusuri	6
	Monguno	Monguno	Borno		Mafa	Gawa	41
Guzamala					Gudumbali	3	
Ngala	Ngala	Borno		Marte	Kirenowa	2	
				Marte	Kirenowa	16	



GLOBAL DATA INSTITUTE
DISPLACEMENT TRACKING MATRIX

