

DISPLACEMENT TRACKING MATRIX — NIGERIA EMERGENCY TRACKING TOOL (ETT)

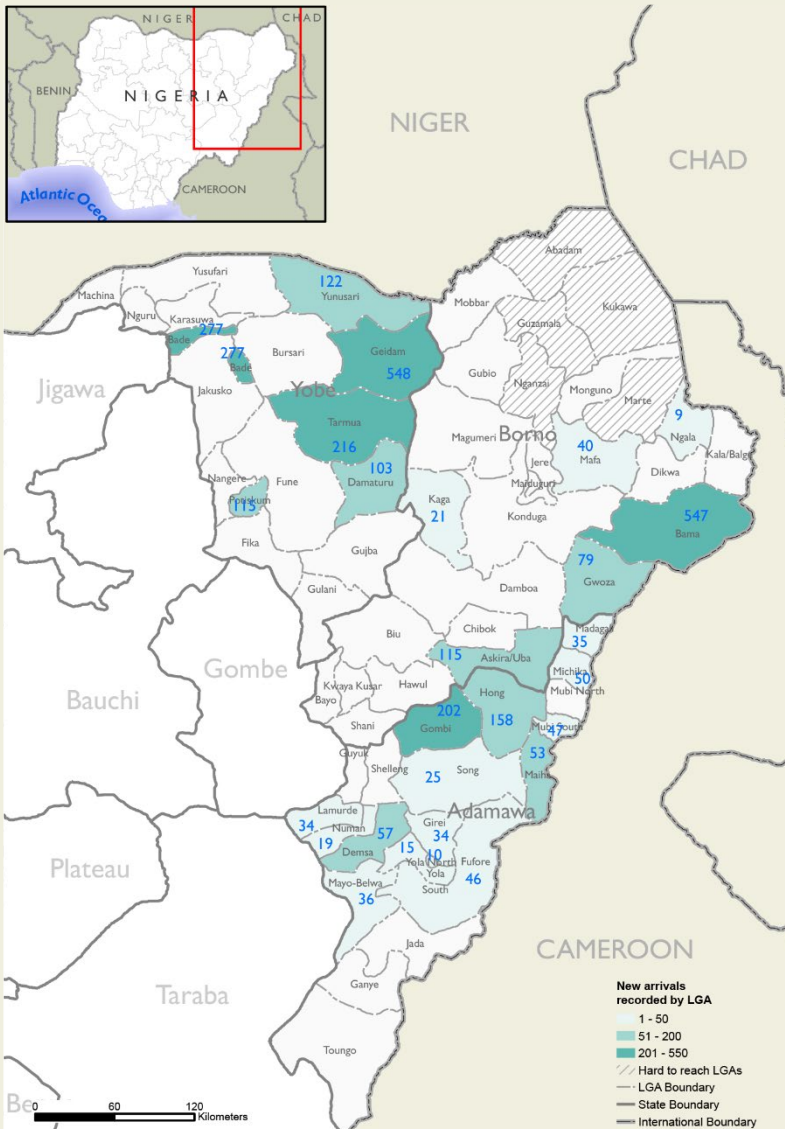
SUMMARY OF MOVEMENTS IN BORNO, ADAMAWA AND YOBE STATES, 10 – 16 June 2024

DASHBOARD: 384

DATA COLLECTION: Week 24, 2024

DATE OF PUBLICATION: 21 June 2024

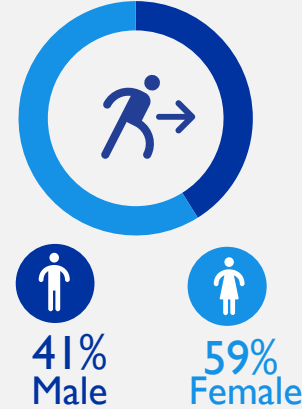
OVERVIEW OF DISPLACEMENTS



KEY FIGURES



GENDER BREAKDOWN



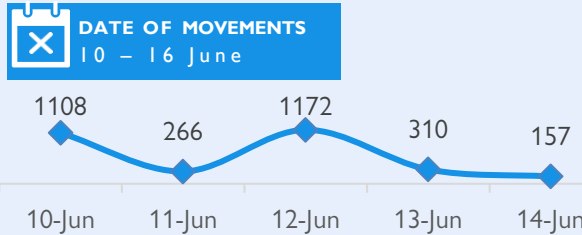
METHODOLOGY

The DTM Emergency Tracking Tool (ETT) is deployed to track and collect information on large and sudden population movements, provide frequent updates on the scale of displacement and quantify the affected population when needed. As a sub-component of the mobility tracking methodology in Nigeria, ETT utilizes direct observations and a broad network of key informants to capture the best estimates of the affected population per location, enabling targeted humanitarian response planning.

LIMITATIONS

The ETT figures reported are not cumulative of all the affected persons thus far but rather provide a snapshot of the current displacement situation on the date indicated. The data and information reported on this dashboard are related solely to the movements caused by the triggers on page two between 10 – 16 June.

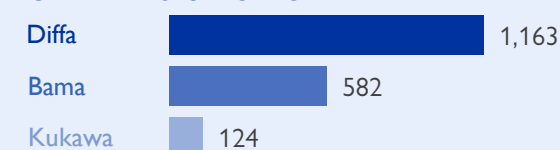
DISPLACEMENT EVOLUTION



TOP REPORTED NEEDS*



TOP AREAS OF ORIGIN



ALERT SUMMARY

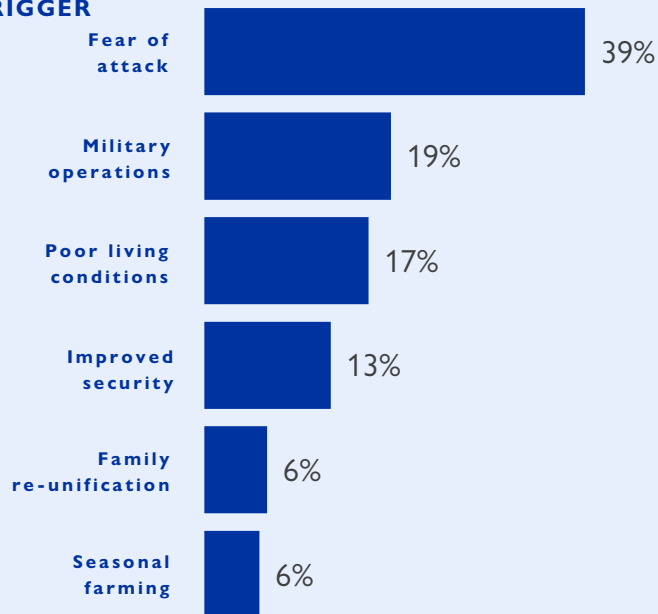
Between 10 and 16 June 2024, a total of 3,013 new arrivals were recorded at locations in Adamawa, Borno and Yobe states. The new arrivals were recorded at locations in Askira/Uba, Bama, Gwoza, Kaga, Mafa and Ngala Local Government Areas (LGAs) of the most conflict-affected Borno State, in Demsa, Fufore, Girei, Gombi, Hong, Lamurde, Madagali, Maiha, Mayo Belwa, Michika, Mubi South, Numan, Song, Yola North and Yola South LGAs of Adamawa State and in Bade, Damaturu, Gaidam, Potiskum, Tarmua and Yunusari LGAs of Yobe State.

ETT assessments identified the following movement triggers: fear of attack (1,176 individuals or 39%), military operations (576 individuals or 19%), poor living conditions (507 individuals or 17%), improved security (390 individuals or 13%), family re-unification (194 individuals or 6%) and seasonal farming (170 individuals or 6%).

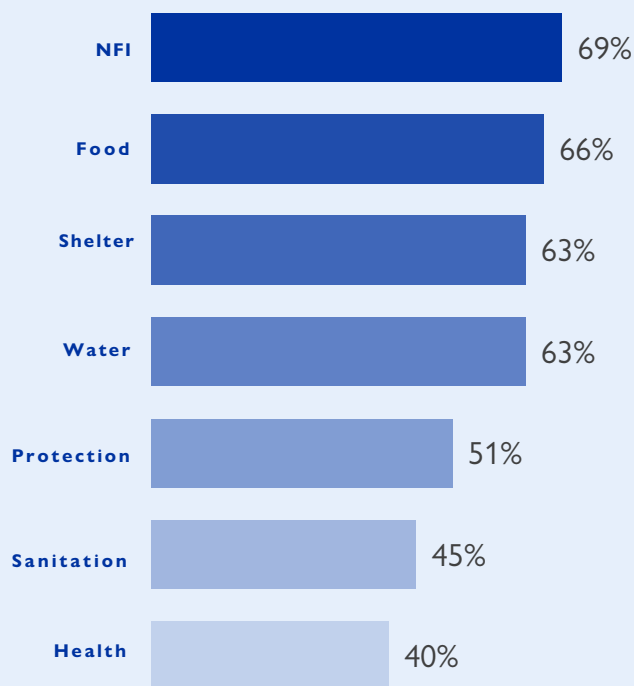
This map is for illustration purposes only. Names and boundaries on this map do not imply official endorsement or acceptance by IOM.

*Multiple-choice response

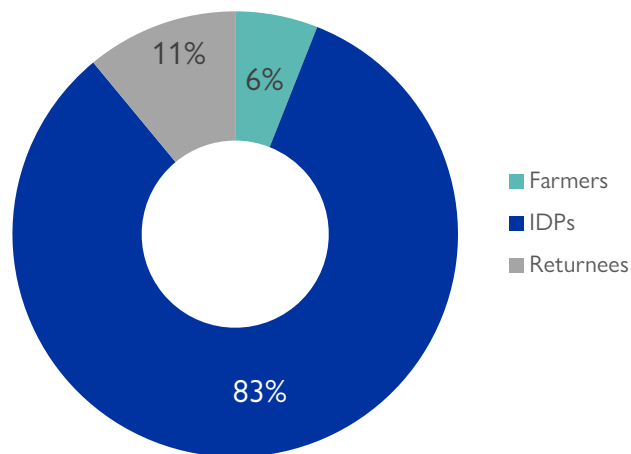
PERCENTAGE OF INDIVIDUALS BY MOVEMENT TRIGGER



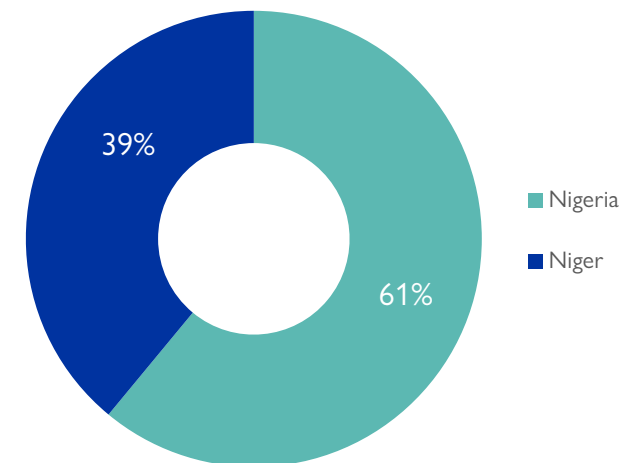
NEEDS EVOLUTION*



ARRIVING POPULATION



COUNTRY OF DEPARTURE OF THE POPULATION



NEW ARRIVALS SCREENING BY NUTRITION PARTNERS



294 MUAC

Green: 243

Yellow: 34

Red: 17

Children (6 – 59 months)
Screened for malnutrition.
Category of screened children.

MALNUTRITION SCREENING SUMMARY OF THE NEW ARRIVALS (CHILDREN 6 – 59 MONTHS)

Between 10 and 16 June 2024, an exhaustive nutrition screening using Mid-Upper Arm Circumference (MUAC) and oedema for acute malnutrition was conducted by sector partners for 294 children aged 6-59 months. Of the 294 children screened, the MUAC reading indicated that 17 were recorded in the red category, 34 in the yellow category and 243 in the green category. No case of oedema was reported in the six LGAs assessed.

Among the 294 children screened, 52 arrived from neighbouring countries (52 in Mobbar LGA); of all the 52 children measured; 46 were in green, six were in yellow and none in the red category. All children found with acute malnutrition have been admitted to the treatment programme.

LGA	MUAC Categories						Total
	Green (≥ 12.5 cm)		Yellow (11.5cm – 12.5cm)		Red (< 11.5 cm)		
	Inaccessible	Accessible	Inaccessible	Accessible	Inaccessible	Accessible	
Bama	165	0	25	0	15	0	205
Dikwa	13	0	0	0	0	0	13
Gwoza	6	2	2	1	0	0	11
Mobbar	0	46	0	6	0	0	52
Mafa	5	0	0	0	0	0	5
Ngala	6	0	0	0	2	0	8
Total	195	48	27	7	17	0	294

■ Nourished

■ Moderate Acute Malnutrition (MAM)

■ Severe Acute Malnutrition (SAM)

Please note, the data presented above are not surveillance results and should be interpreted with caution.

*Multiple-choice response

DISPLACEMENT BREAKDOWN – only the movements with 20 persons and above are listed below.

State	Arrival location		Movement location			Number of individuals	
	LGA	Ward	State	LGA	Ward		
Adamawa	Demsa	Demsa	Adamawa	Yola South	Ngurore	57	
	Fufore	Ribadu	Adamawa	Yola South	Bole Yolde Pate	27	
	Girei	Gereng	Adamawa	Gombi	Garkida	34	
	Gombi	Gombi	Garkida	Borno	Gwoza	Pulka/Bokko	21
			Gombi South	Adamawa	Mubi North	Vitim	37
			Guyaku	Borno	Hawul	Kwaya-Bur/Tanga Rumta	50
			Tawa	Adamawa	Hong	Hong	41
			Yang		Maiha	Konkol	32
					Michika	Madzi	21
	Hong	Hong	Bangshika	Adamawa	Maiha	Mayonguli	30
			Kwarhi		Mubi South	Gella	50
			Thilbang		Michika	Bazza Margi	38
			Uba		Mubi North	Vitim	40
		Lamurde	Suwa	Adamawa	Numan	Imburu	34
		Madagali	Madagali	Borno	Bama	Kasugula	20
		Maiha	Sorau A	Adamawa	Madagali	Babel	21
			Sorau B		Fufore	Pariya	17
		Mayo – Belwa	Mayo Farang	Adamawa	Mayo - Belwa	Mayo Farang	36
		Michika	Michika I	Adamawa	Girei	Jera Bonyo	37
	Mubi South	Gude	Adamawa	Hong	Kwarhi	25	
Gude		Mubi North		Betso	22		
Borno	Askira/Uba	Chul/Rumirgo	Adamawa	Maiha	Belel	22	
		Mussa		Michika	Moda/Dlaka/Ghenjuwa	20	
		Buduwa/Bula Chirabe		Borno	Bama	Dipchari/Jere/Dar-Jamal/Kotembe	221
	Bama	Shehuri/Hausari/Mairi	Lawanti/Malam/Mastari/Abbaram			38	
			Mbuliya/Goniri/Siraja			136	
						152	
	Gwoza	Gwoza Wakane/Bulabulin	Borno	Gwoza	Hambagda/Liman Kara/New Settlement	42	
	Kaga	Benisheikh	Borno	Kaga	Shettimari	21	
	Mafa	Mafa	Borno	Mafa	Gawa	40	
	Yobe	Bade	Lawan Fannami	Niger Republic	Diffa	Diffa	103
Zango Musa/Zango Umaru			Diffa			174	
Damaturu		Gabir/Maduri	Yobe	Gujba	Ngurbuwa	103	
Geidam		Asheikri	Niger Republic	Diffa	Diffa	228	
		Hausari				182	
		Kawuri				138	
Potiskum		Yerimaram/Garin Daye/Badejo/Nahuta	Borno	Kukawa	Baga	115	
Tarmua		Babangida	Niger Republic	Diffa	Maine	119	
	Lantaiwa	Diffa			97		
Yunusari	Mairari	Niger Republic	Diffa	Maine	122		